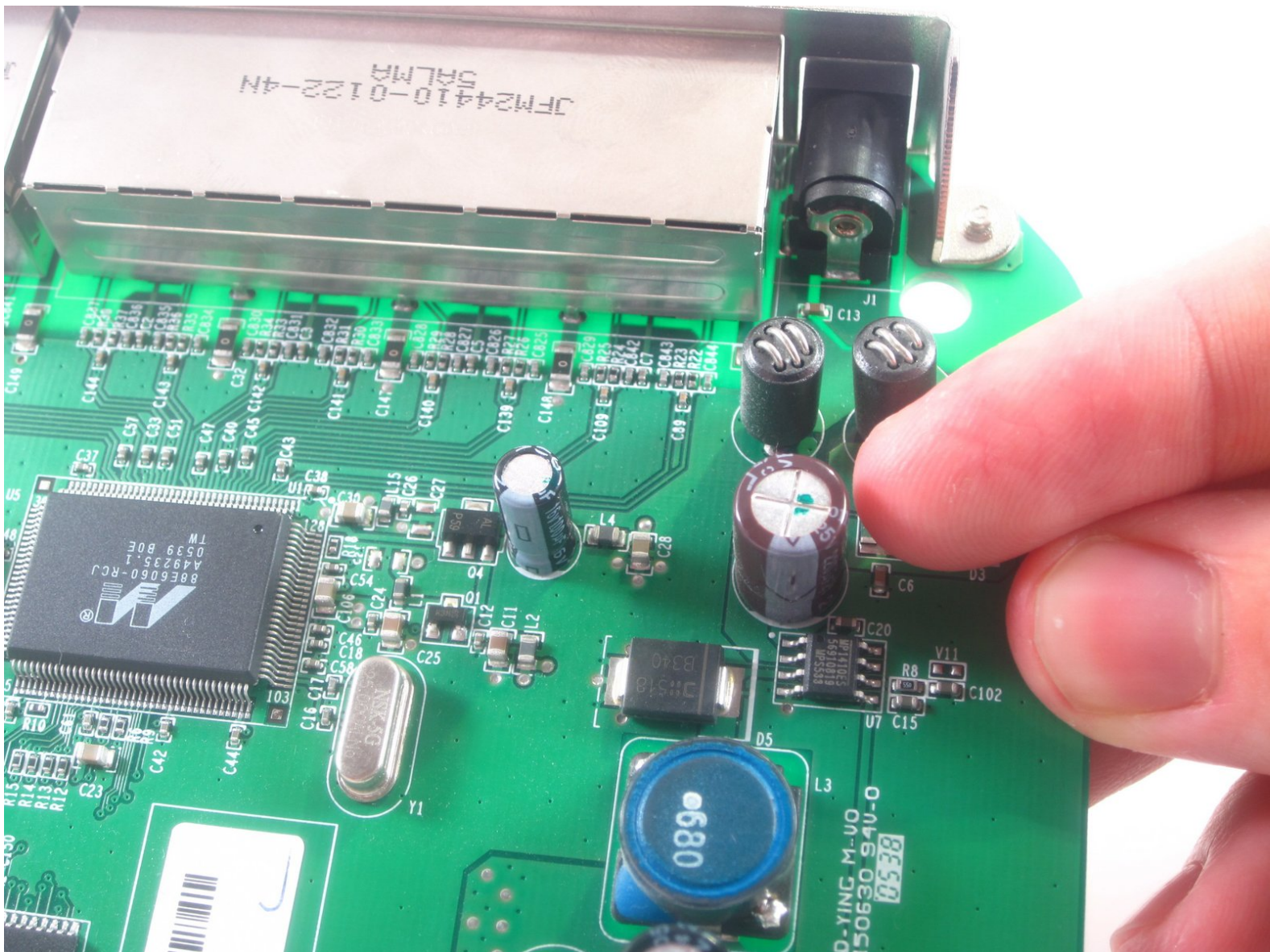




# NETGEAR WGT624 v3 Capacitor Replacement

Follow this guide to remove the four capacitors from the device.

Written By: Jonathon Sather



---

## INTRODUCTION

This guide will demonstrate how to remove the capacitors in order to replace them. Soldering and de-soldering will be required.

---

### TOOLS:

- [Desoldering Braid](#) (1)
  - [iFixit Opening Tools](#) (1)
  - [Solder](#) (1)
  - [Soldering Workstation](#) (1)
  - [T8 Torx Screwdriver](#) (1)
-

## Step 1 — Lower Case



- Turn the device so that the bottom is facing up.

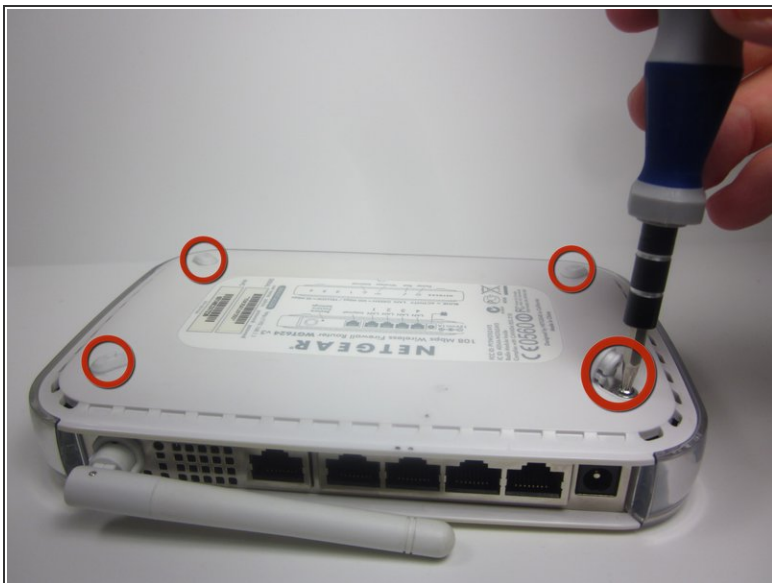
## Step 2



- Use the plastic opening tool to carefully lift the rubber stops in each corner.
- ⓘ Do not completely remove the rubber stops, because they are difficult to replace.



### Step 3



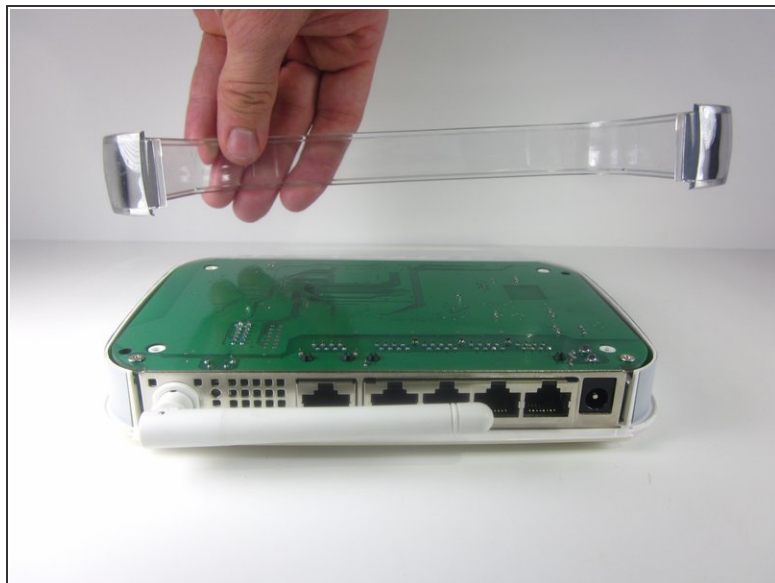
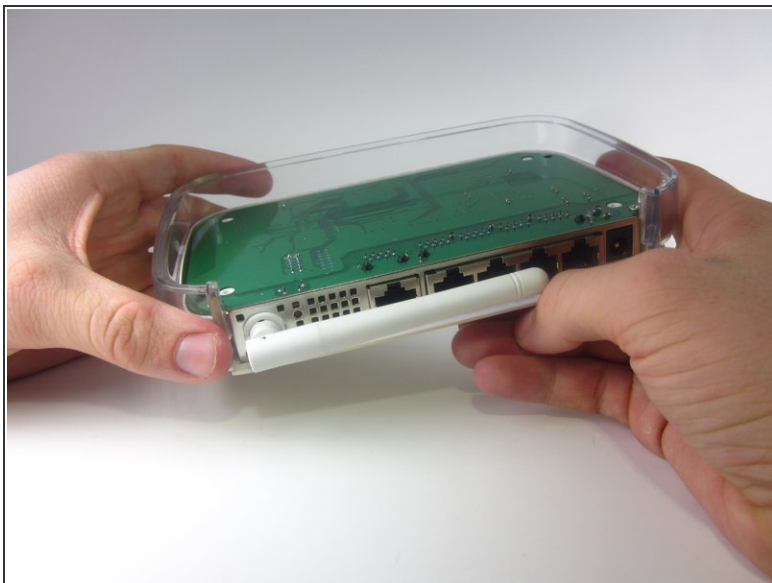
- Unscrew the 4 11.8 mm T-8 Torx screws from each corner of the device.

### Step 4



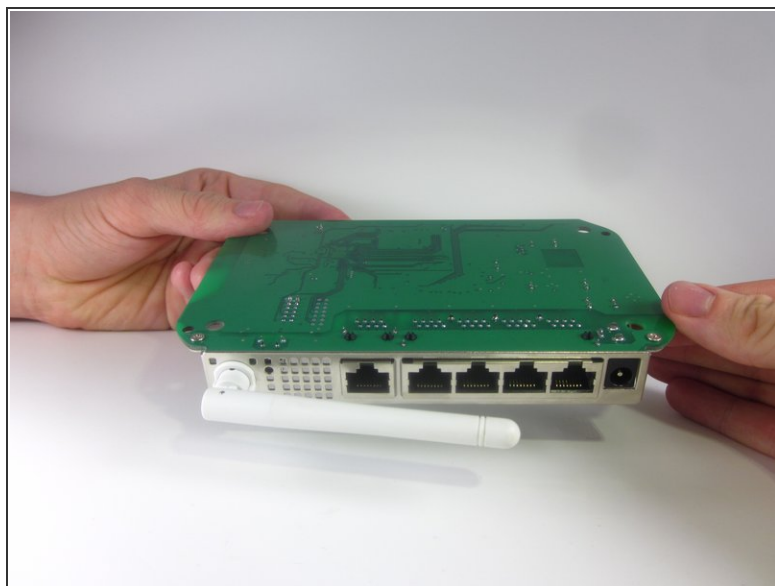
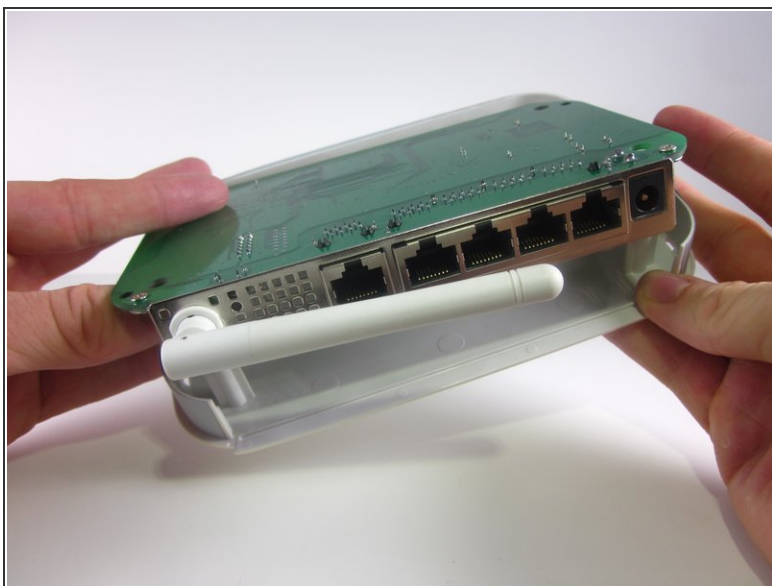
- Lift the lower case straight up from the rest of the router.

## Step 5 — Motherboard



- Remove the clear plastic casing by lifting it straight up from the router.

## Step 6



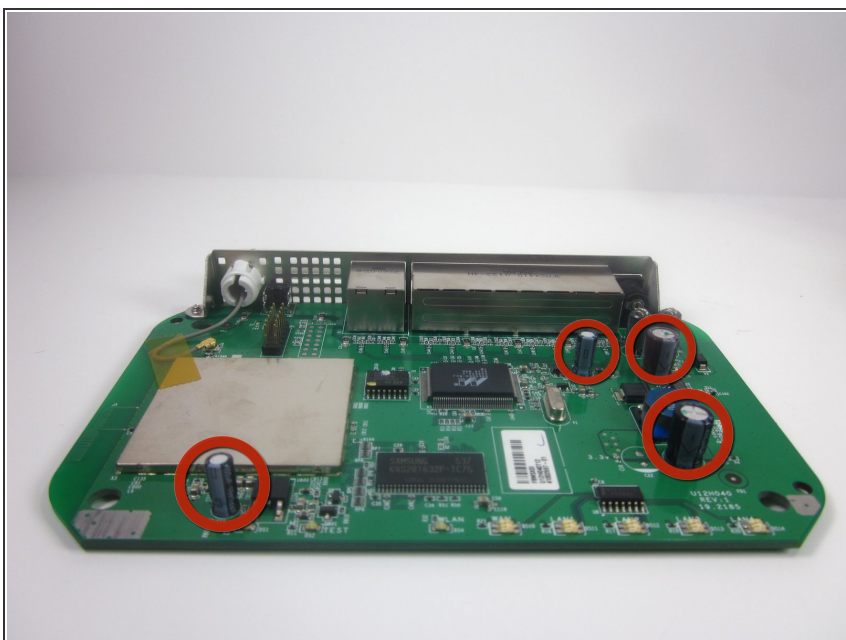
- Separate the motherboard from the top shell by lifting it straight up from the router.

## Step 7 — Capacitor



- Turn the motherboard so that the top is facing upwards.
- Place the motherboard on a clean flat surface.

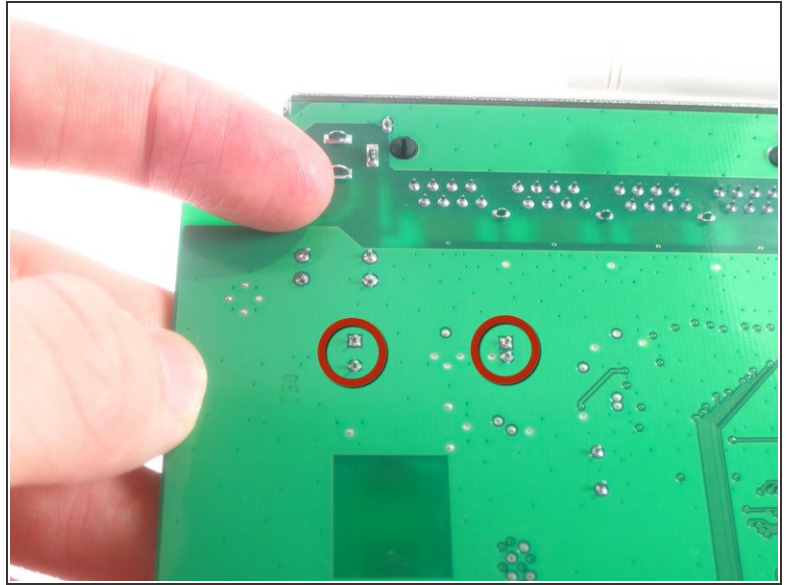
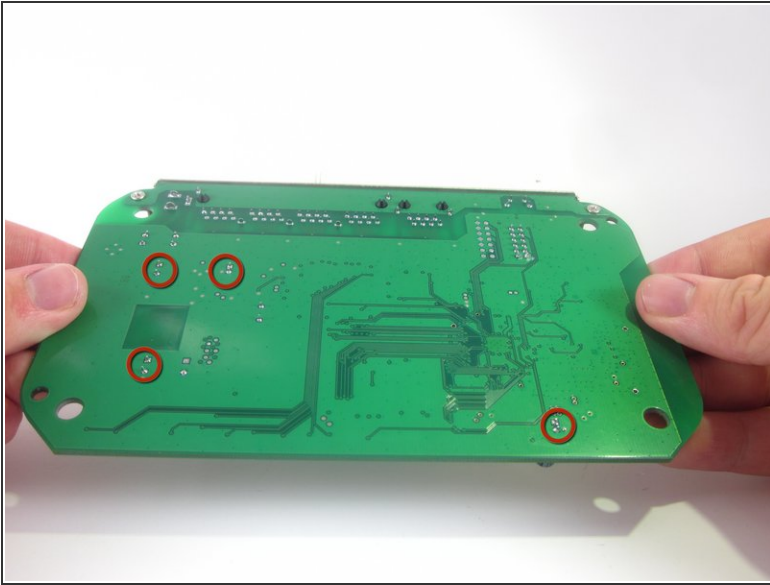
## Step 8



- Locate the four capacitors.

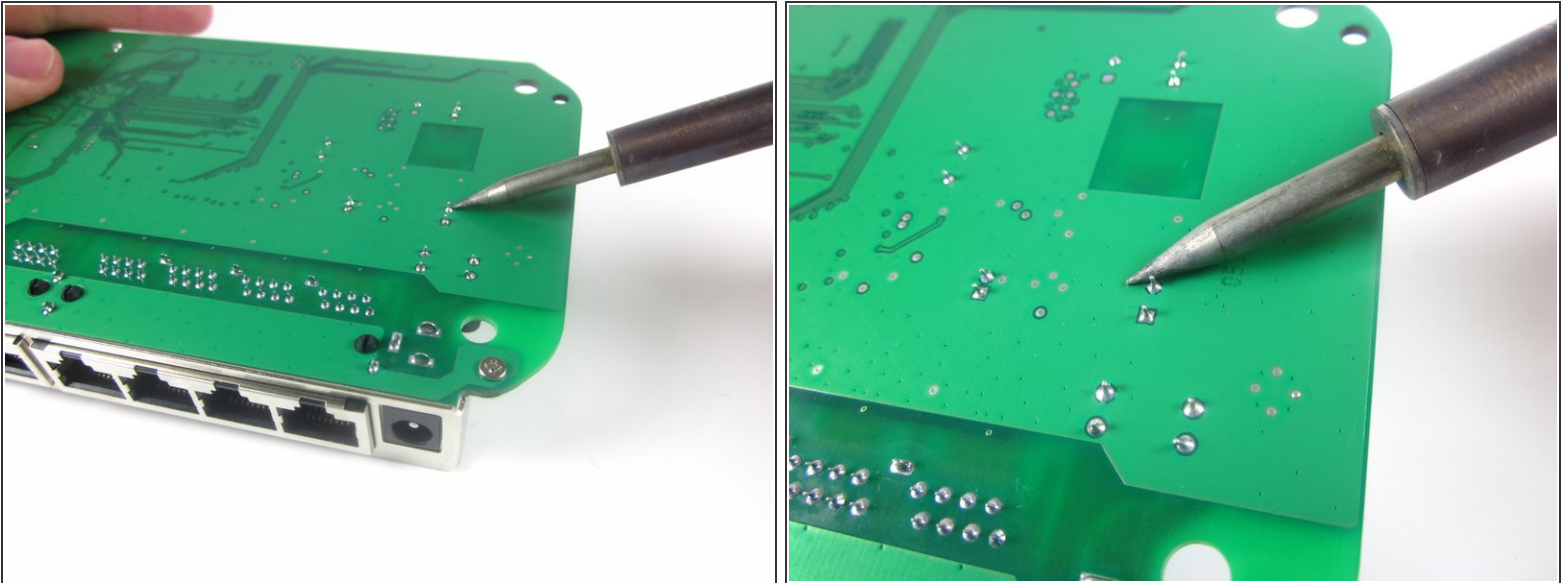



## Step 9





- Turn the motherboard so that the bottom is facing upwards.
- Locate the two soldered contacts for each capacitor.

## Step 10



 Do not refer to the pictures in this step for correct soldering and de-soldering techniques. They are solely for illustration purposes.

- Desolder the soldered connections between the capacitors and the motherboard, and pull the capacitor from the motherboard.
-  For proper soldering and de-soldering techniques, refer [here](#).
-  When reinstalling the capacitor, make sure the negative side of the capacitor is aligned with the shaded white region of the circle.

To reassemble your device, follow these instructions in reverse order.