



NVIDIA P2575 Battery Replacement and Breakdown

NVIDIA Shield Remote Generation 1 battery replacement

Written By: Kevin Jones



INTRODUCTION

<https://www.youtube.com/watch?v=XbTQnlbH...>

According to Thread: [Nvidia TV Remote Model P2575 need battery](#)

Replacement Battery:

Genuine Original Battery NVIDIA MH27725 027-0033-000



TOOLS:

- [Phillips #00 Screwdriver](#) (1)
 - [Jimmy](#) (1)
 - [Precision Tweezers Set](#) (1)
-

Step 1 — Get Item and tools in area for dismantle



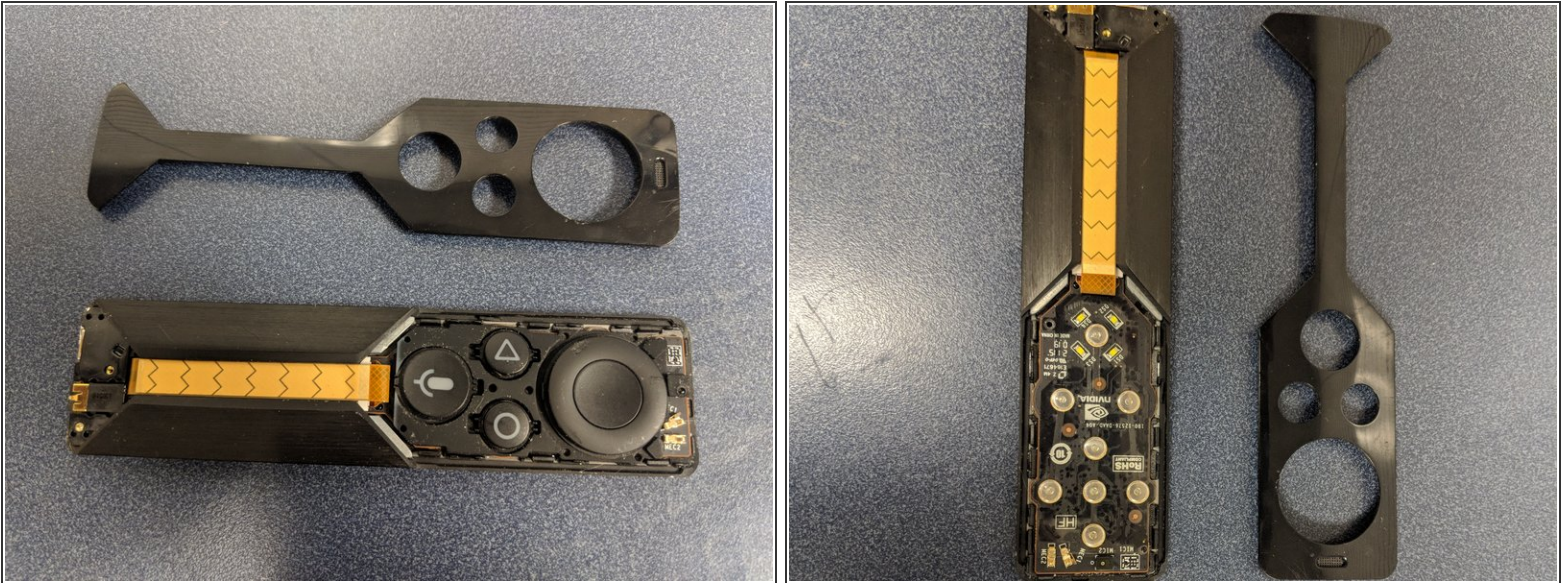
- Suggested Items Listed

Step 2 — Removing the Top Cover



- From here you will want to use the Jimmy or similar item to get under the bottom corner to get past the inner clips. From here you can carefully get both sides of the bottom top cover and lift it off. The remainder of the cover should come off fairly easily. If not use the jimmy to unclip the others.

Step 3 — Removing buttons and Exposing the circuit



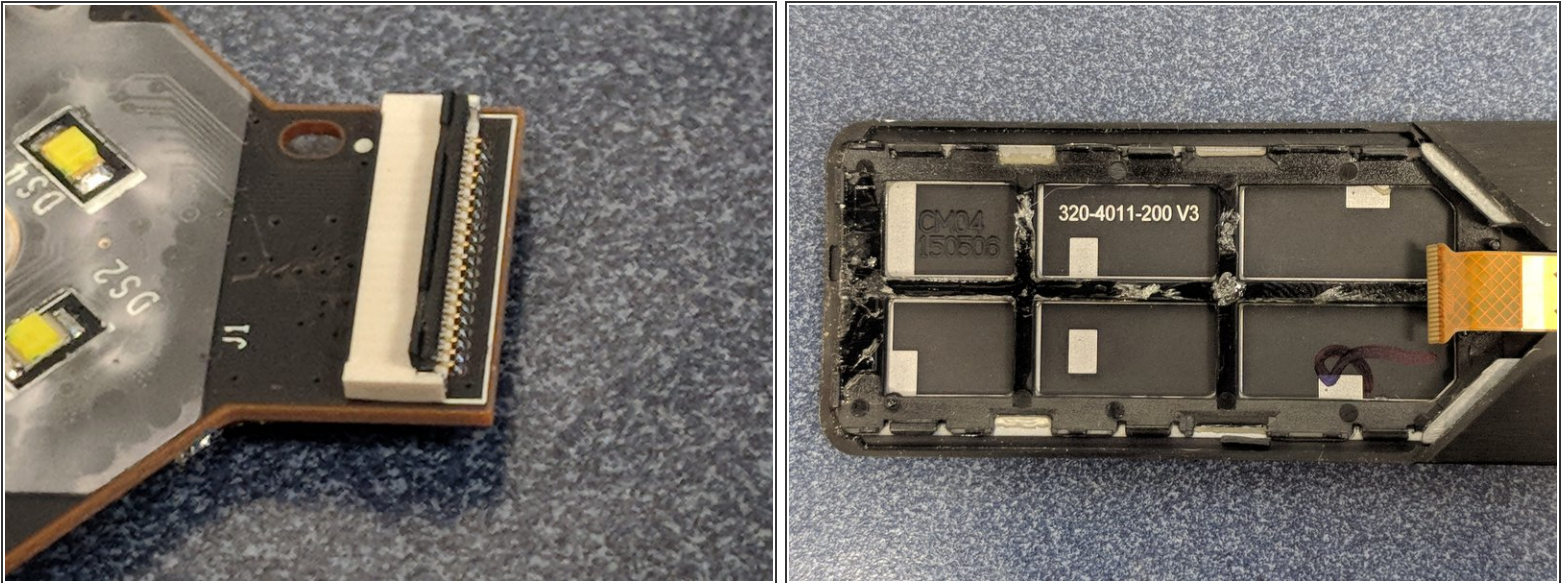
- The Buttons are easily removed. The Volume Touch pad is also seen here; it is attached by glue.

Step 4 — Removing the first Circuit Board



- Use the Jimmy to prop the circuit board from the glue attached to the casing. Be careful of the ribbon attached. The circuit board will come out away from the ribbon if you remove it from the glue.

Step 5 — Removing the Ribbon Cable from Circuit



- Once you have the Circuit out of the glue you will see the shown Ribbon attachment clip moved up to be removed. Second picture the board is removed.

Step 6 — Removing the Ribbon Sensor and Battery Compartment



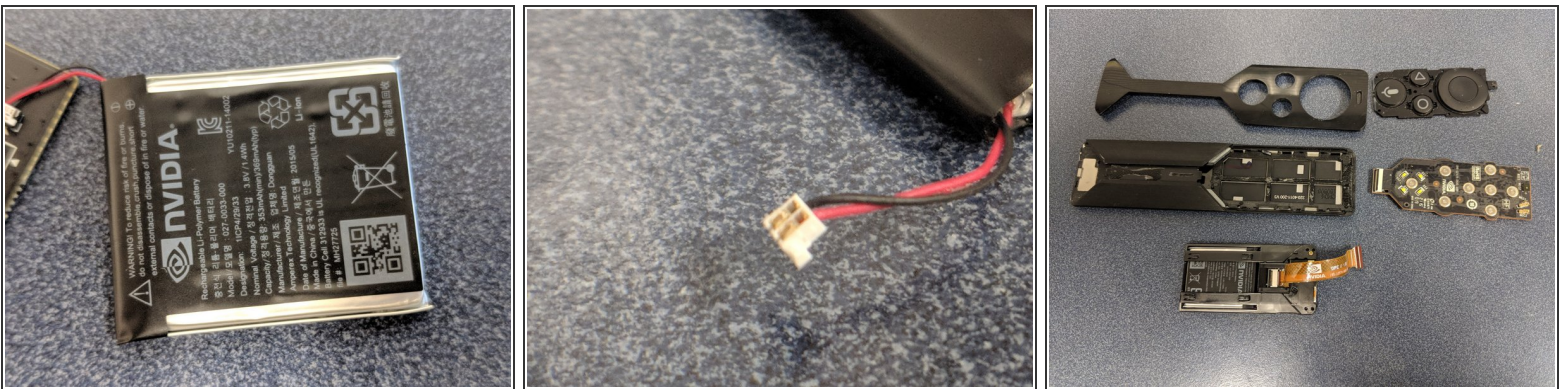
- The Sensor Ribbon is carefully peeled away from the glue. There are two options available to get the battery compartment out. You can either use the Tweezers and push near the ribbon cable or you can use the tweezers to push from the other end inside and under the Sensor place as seen in the picture.

Step 7 — Removing the Battery from the housing



- From here you can remove the Single Phillips Screw using the Phillips 00 Driver Bit. This will let you pry the circuit and battery from the Glue . You can lift the Battery from the Circuit board as it is made to lift upward and away from the board.

Step 8 — Battery and Overall Component Picture



- Insert wisdom here.