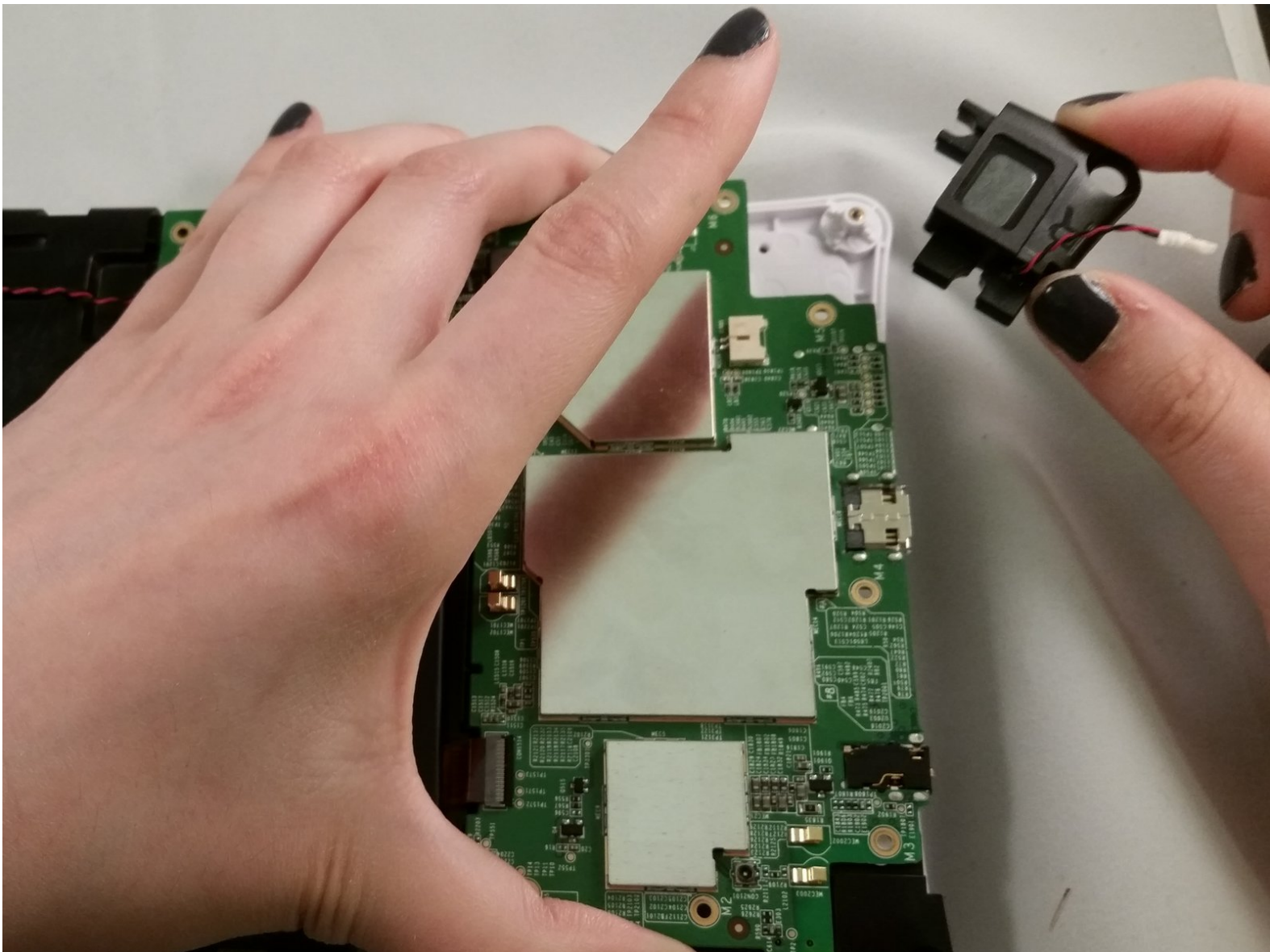




# Nabi 2S Speakers Replacement

Use this guide to remove and replace the speakers for the Nabi 2S.

Written By: Riana Ramirez



---

## INTRODUCTION

This guide will aid you in the process of removing the speakers of the device. This is useful in replacing broken speakers

---

### TOOLS:

- [Phillips #0 Screwdriver](#) (1)
  - [iFixit Opening Tools](#) (1)
-

## Step 1 — Nabi 2S Disassembly



- Remove the red rubber case from the device.

## Step 2



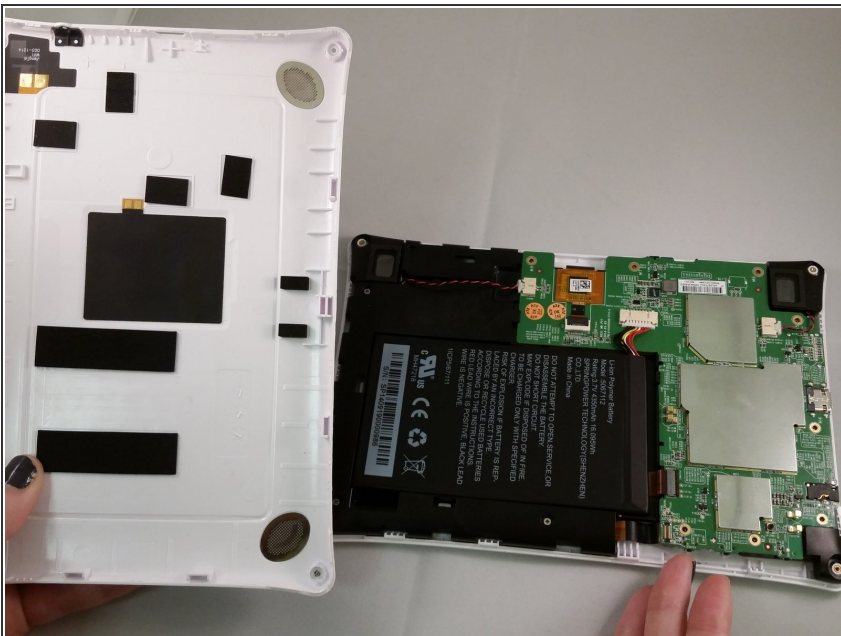
- Make sure the screen is facing away from you and the back cover is facing you.
- Using a Phillips #0 Screwdriver, unscrew the 3mm screws counter-clockwise in each corner of the plastic back cover. It will be a total of four screws. The smaller case on the back cover is attached to the main cover so it will not need to be removed.

## Step 3



- Using the plastic opening tool, remove the case.
- ❗ Removing the case will take a bit of effort and force. We recommend using two hands and if possible another person to help. It will require some gusto.
- ❗ It is helpful to pry at the corners first to loosen the case.

## Step 4



- After the back case is loosened, remove it from the device to change or access the battery.

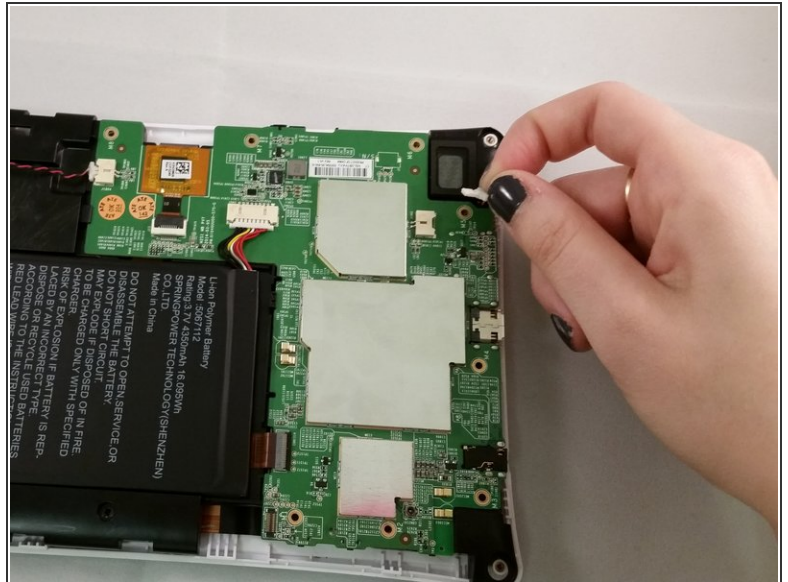
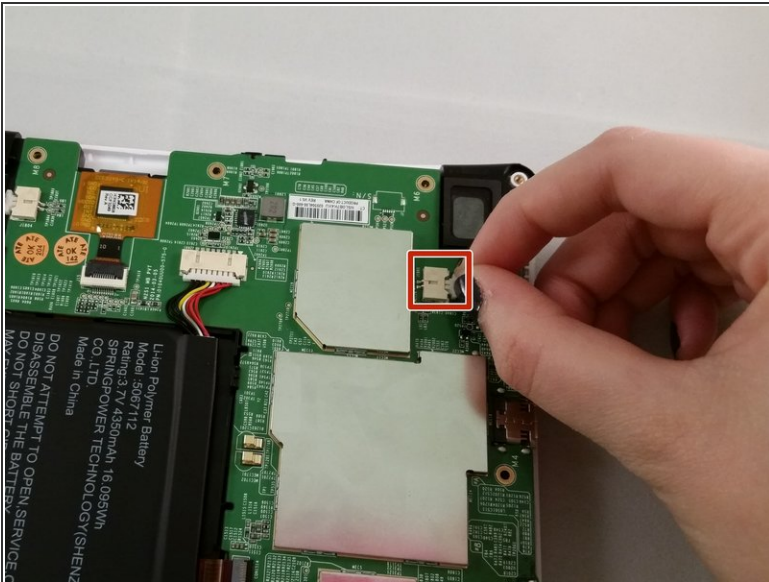


## Step 5 — Speakers



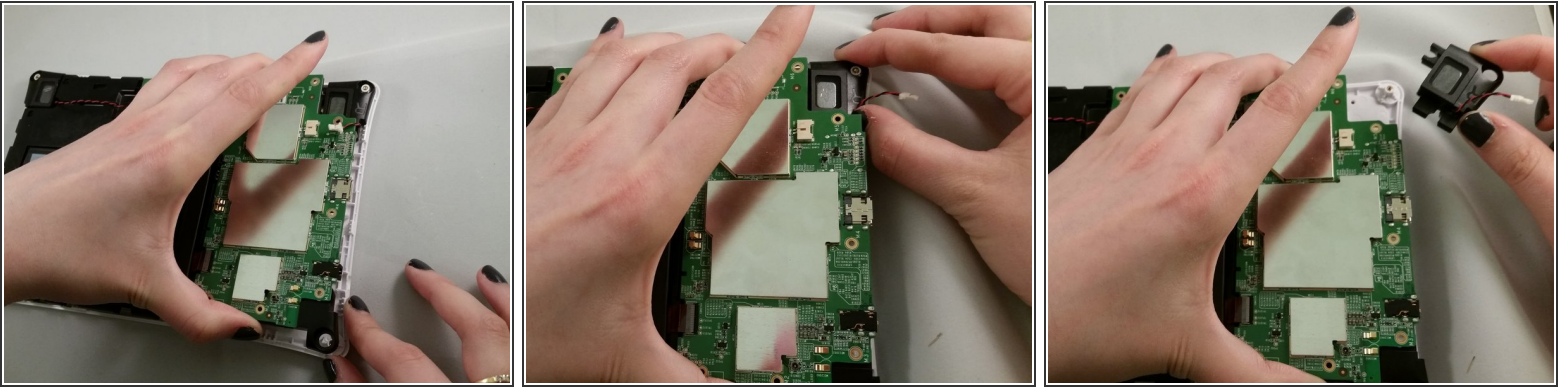
- Unscrew the circuit board from the motherboard by using a Phillips #0 screwdriver to unscrew the 4mm screws in a clockwise rotation.

## Step 6



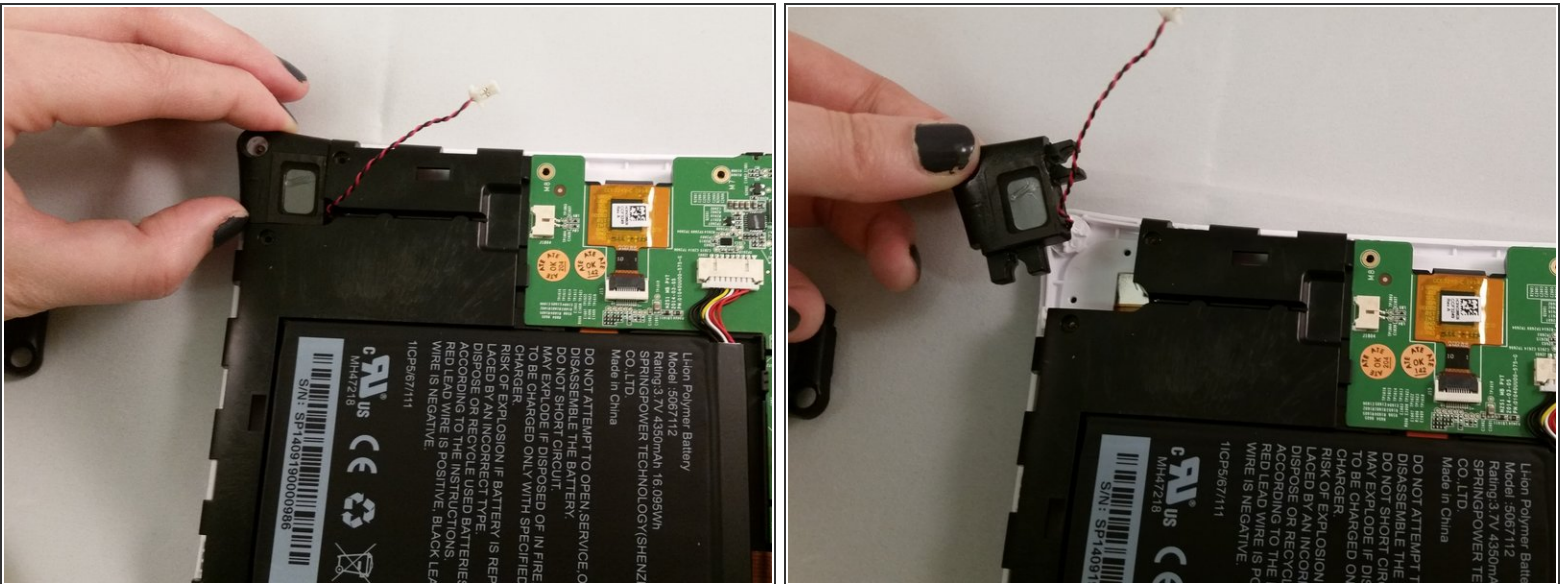
- The speakers are attached to the device via wires that are connected to a circuit. Grasp the circuit connected to the right speaker.
- Slide the connected wires from the circuit to detach the speakers.

## Step 7



- Lift the circuit board to get better access for removing the speaker.
- Grasp the speaker with your fingers and lift it from the plastic

## Step 8



- Repeat steps 6 and 7 for the second speaker on the left side.
- ❗ The circuit board should still be loose to remove the speaker.

To reassemble your device, follow these instructions in reverse order.