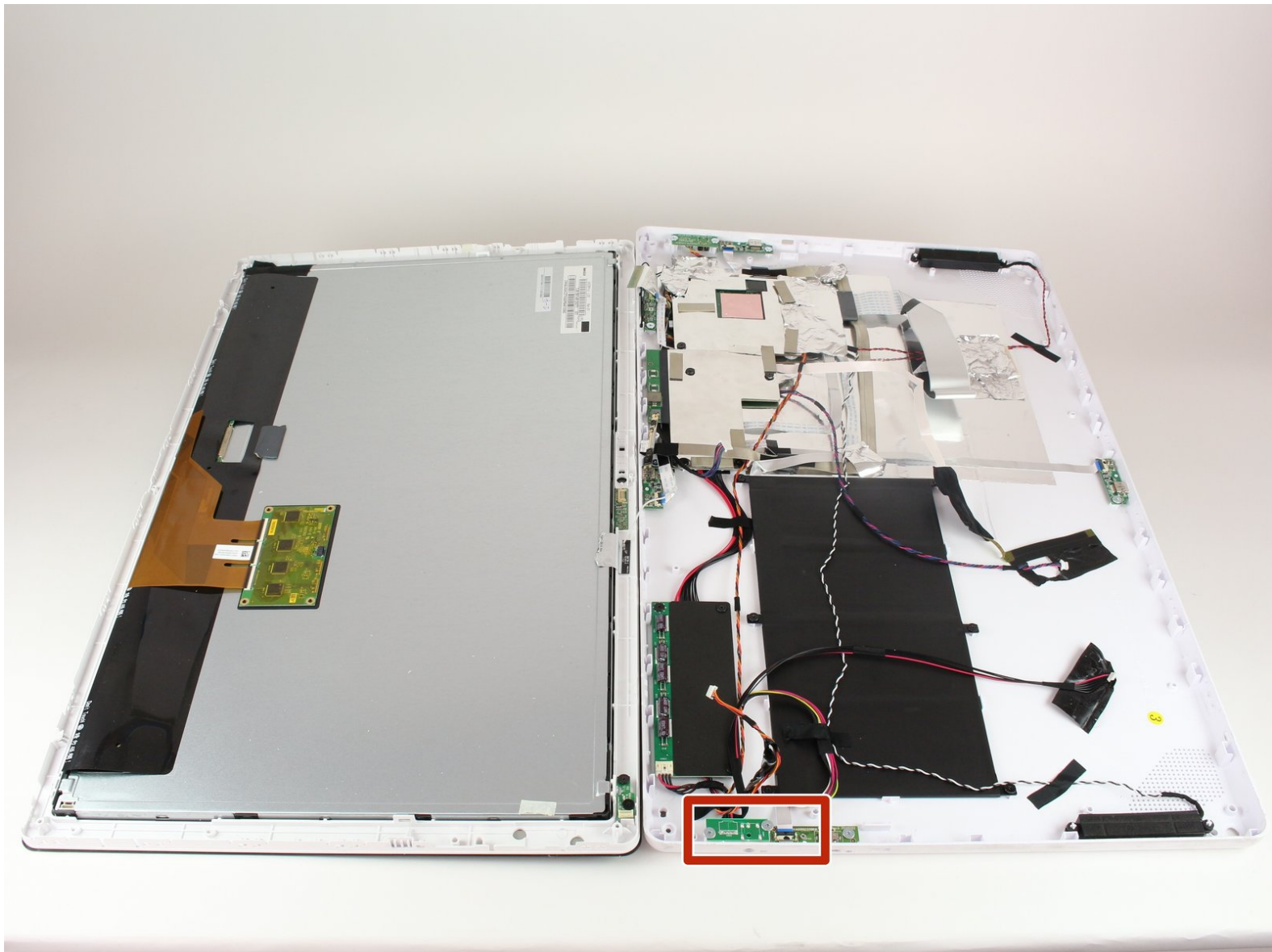




# Nabi Big Tab HD24 Charging Port Replacement

Replacing the charging port of your tablet so you can get the power back.

Written By: Karen Lopez



---

## INTRODUCTION

Make sure you are using the correct charging cable. Use the black cable, since the white cable can only be used for data transfer. Do not confuse the audio port with DC port. Test the power cable and nabi power adapter separately before attempting to fix DC port. If non of the above are causing the problem, replace the DC port.



### TOOLS:

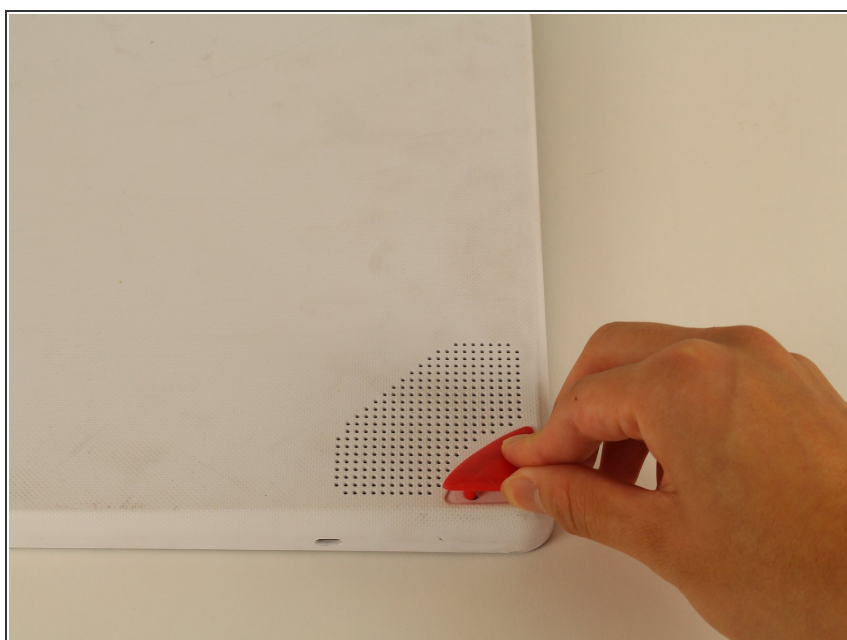
- [Phillips #1 Screwdriver](#) (1)
  - [iFixit Opening Tools](#) (1)
  - [Metal Spudger Set](#) (1)
-

## Step 1 — Back Assembly



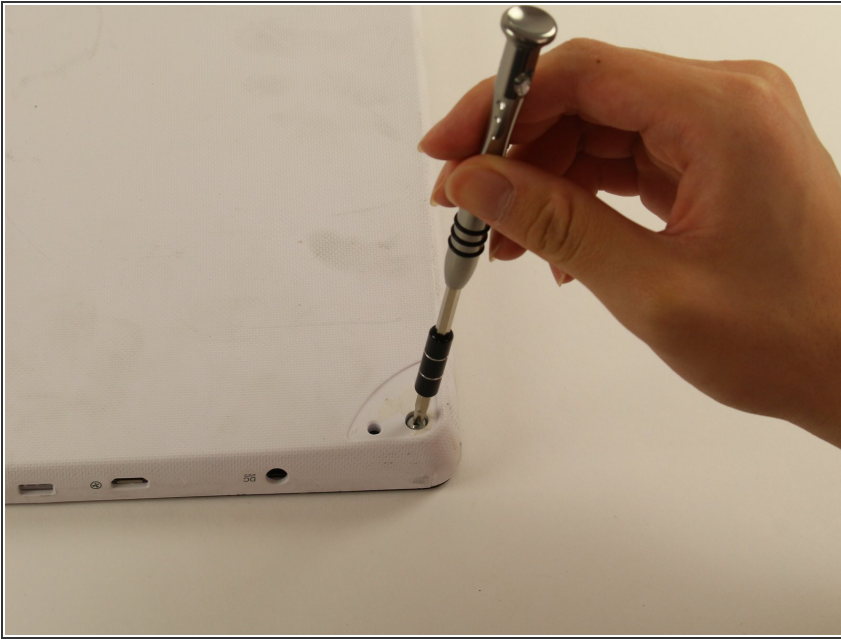
- ❗ Ensure that the tablet is facing you with the screen on the table.
- Locate the four red rubber stops at the corners.

## Step 2



- Use your fingers to carefully peel them off the device to reveal the screws underneath.

## Step 3



- Use a Phillips #1 screwdriver to remove the 9.5 mm screw in each of the four corners.

## Step 4



- ✦ Flip the tablet over such that the screen is facing upwards.
- Locate the the 4 small openings on the sides of the tablet.
- ⓘ There should be 2 on the bottom of the tablet, 1 on each side of the tablet viewing it from the front as if you were using it.
- ⚠ Do not confuse the openings with the charging port or the USB ports. The openings will be labelled with an icon of a small fan, the Nabi logo.

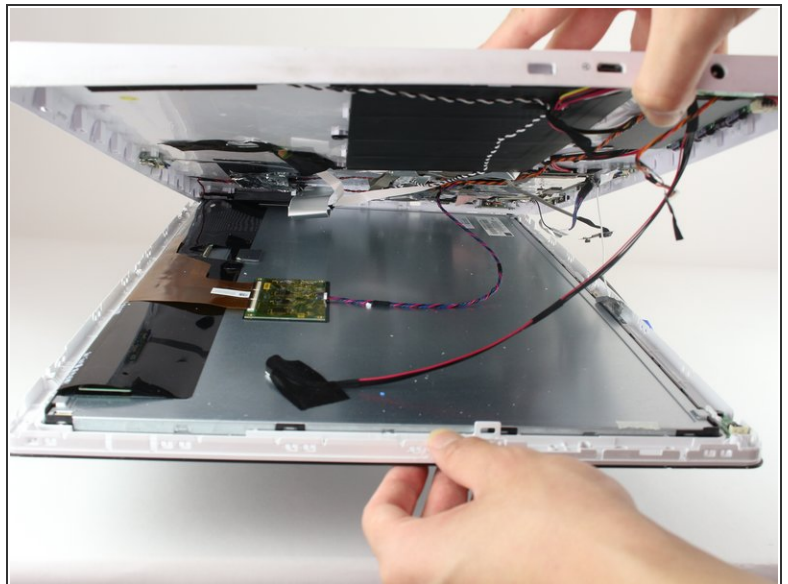


## Step 5



- Insert a metal spudger into one of the openings and carefully pop the device open by applying a steady downward force.
- Repeat for the other three openings.

## Step 6

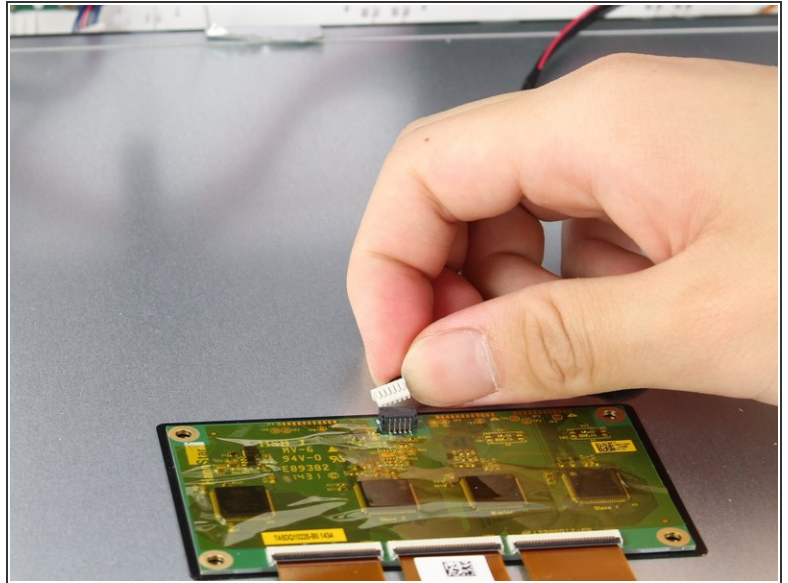
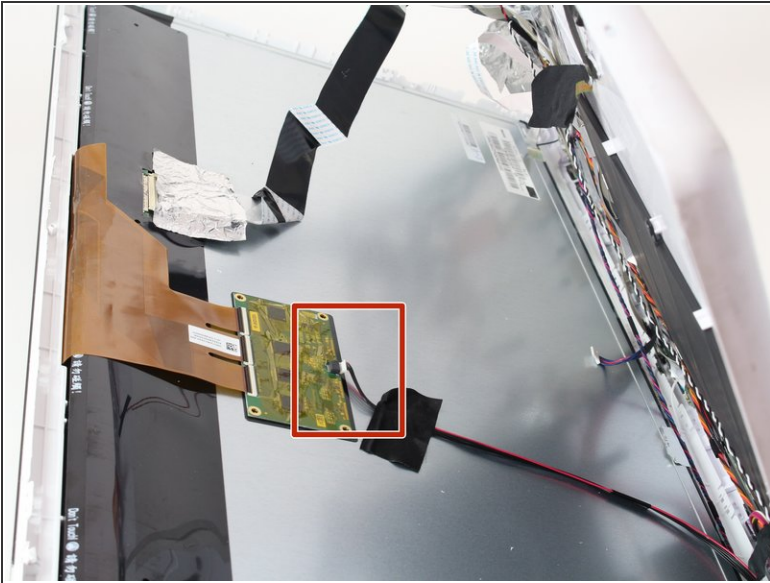


✦ Flip the device over so that the back assembly is facing you.

- Use a plastic opening tool to carefully pry open the device from its hinges.

⚠ Take care when opening the device as there are cables running internally that are connected to both the front and the back assemblies.

## Step 7



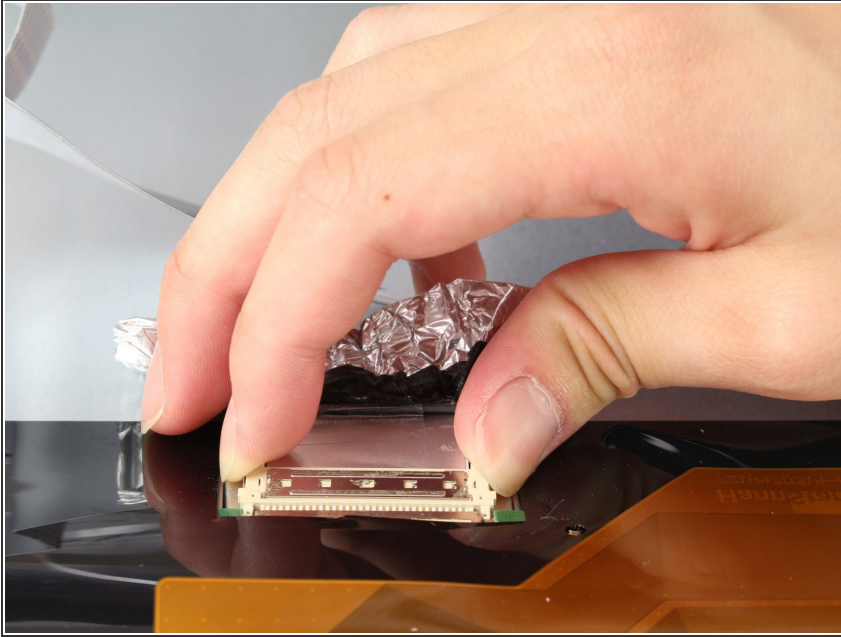
- Locate the white port that connects the back panel to the circuit board on the back of the display.
- Carefully pull the plastic connector straight out.

## Step 8



- ⚠ Be careful of the aluminum foil tape, as it can easily rip.
- Carefully lift up the aluminum foil tape with your fingers so that the ribbon connector reveals itself.
- ⚠ Do not try to pull the ribbon cables off the screen as there is a plastic piece surrounding the ribbon cables glued onto the metal display.

## Step 9



- Firmly press the two switches located on the sides of the connector and disconnect the connector from its connections.
- ⓘ Leave the connector disconnected but still intact with the metal display.

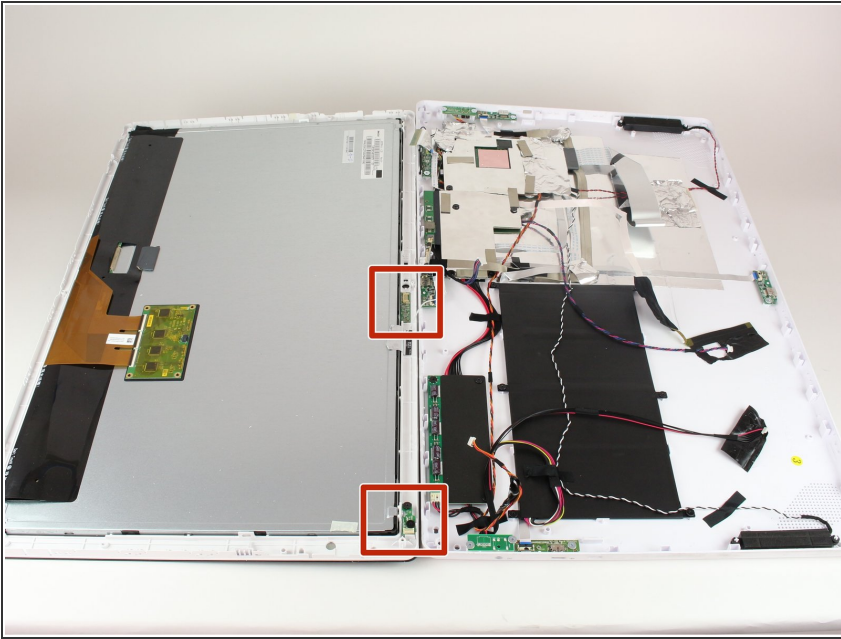
## Step 10



- Use a plastic opening tool and carefully push it underneath the grey plastic case surrounding the ribbon cable.
- Apply a downward force to carefully peel the grey plastic off of the metal display.

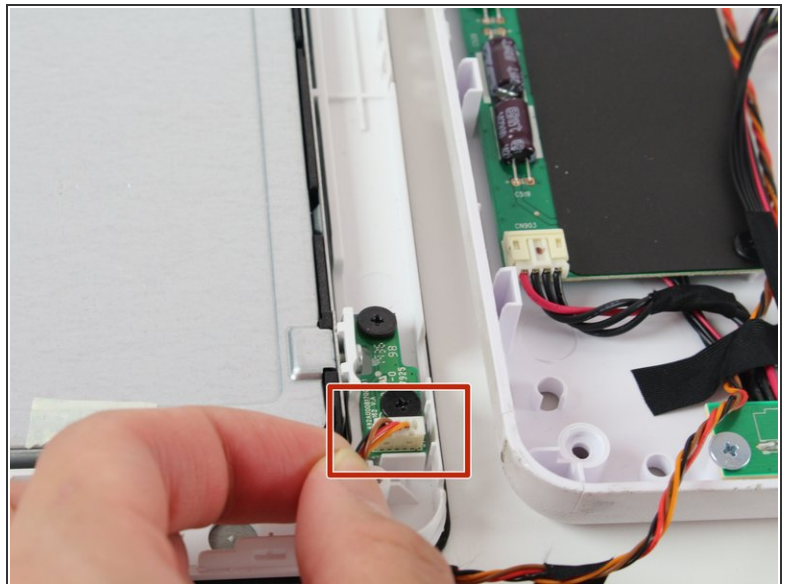
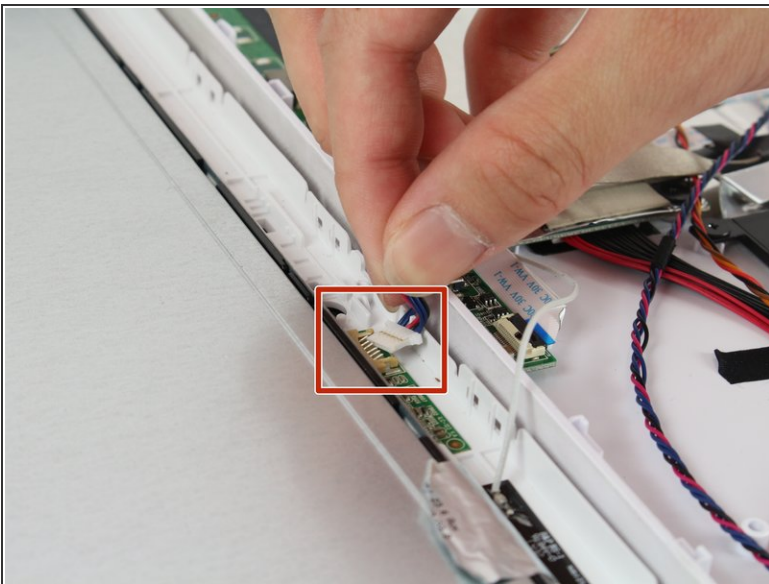


## Step 11



- Locate the two cables running on both sides of the device found at the bottom side of the screen.

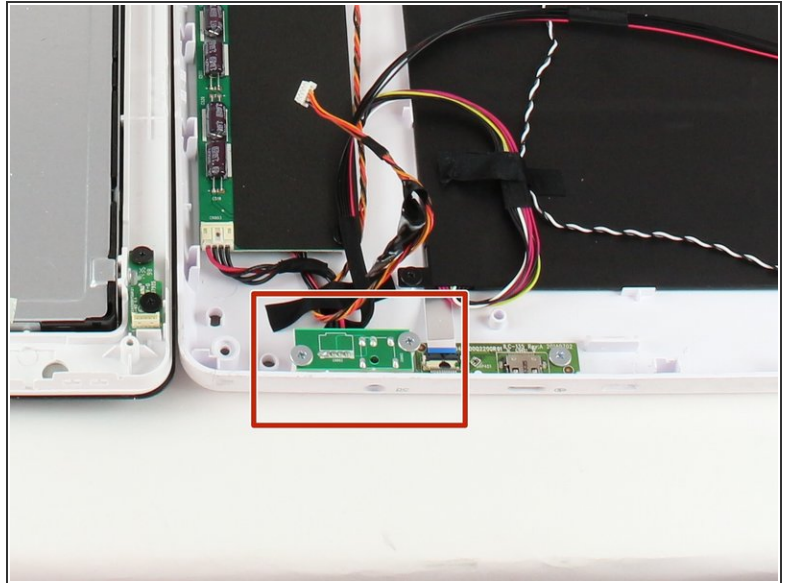
## Step 12



- Carefully grab both sides of the white plastic piece with your fingers and gently pull directly upward.
- ⚠ Do not pull from the red and black cable as it is not very sturdy and may come undone from the connector.

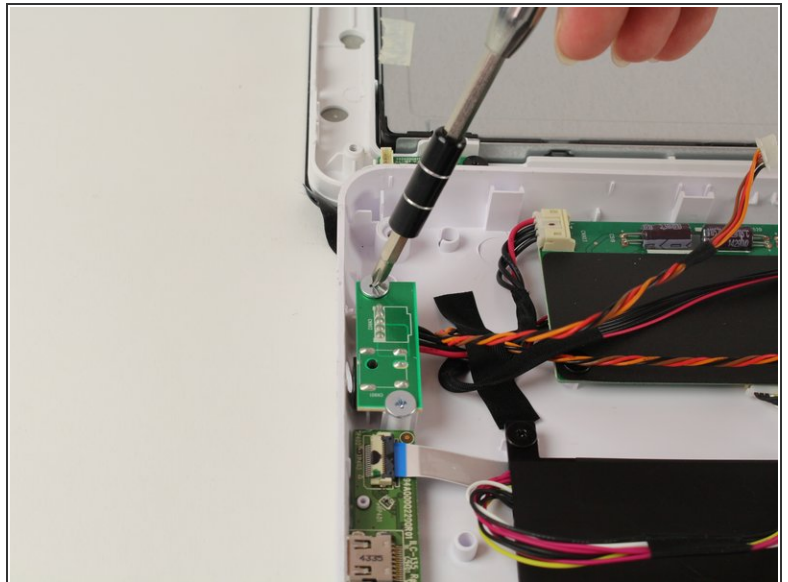
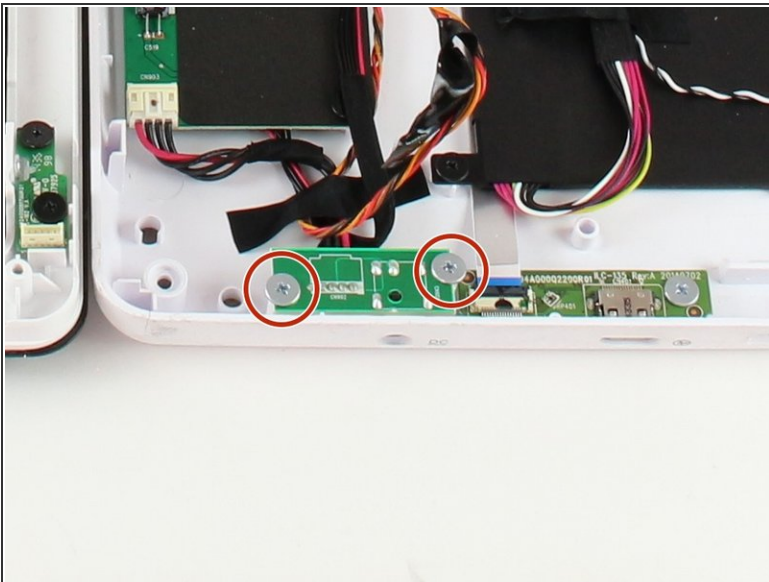


## Step 13 — Battery Charging Port



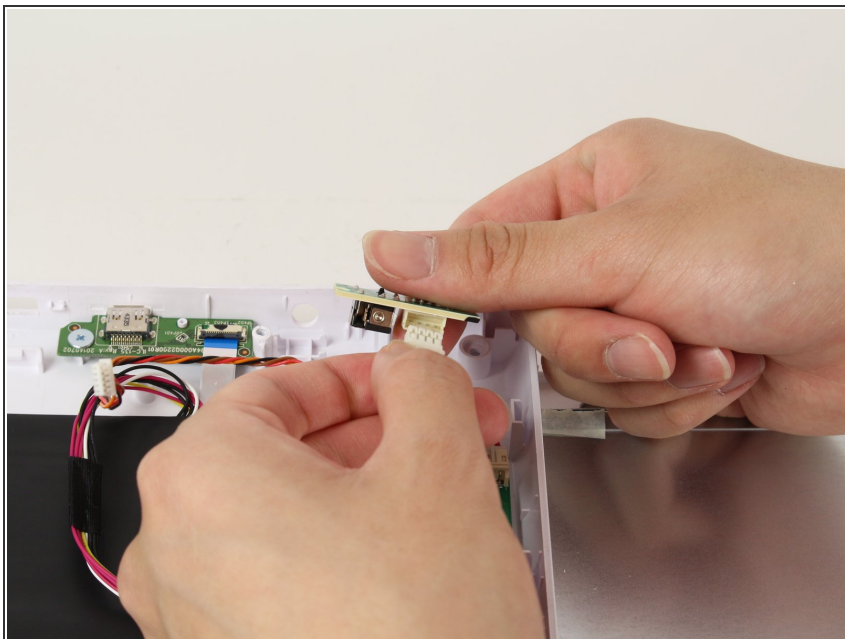
- Locate the battery charging port labeled "DC" on the side of the tablet .

## Step 14



- Use a Philips #1 screw driver to unscrew the two silver 4.5 mm screws located on top of the circuit board.

## Step 15



- Disconnect the white port with black and red cables from the circuit board with your hands.
- ⓘ It may take a few tries to remove the cable, since it is connected very tightly. Wiggling it some may help.
- Replace your circuit board with the new one.

To reassemble your device, follow these instructions in reverse order.