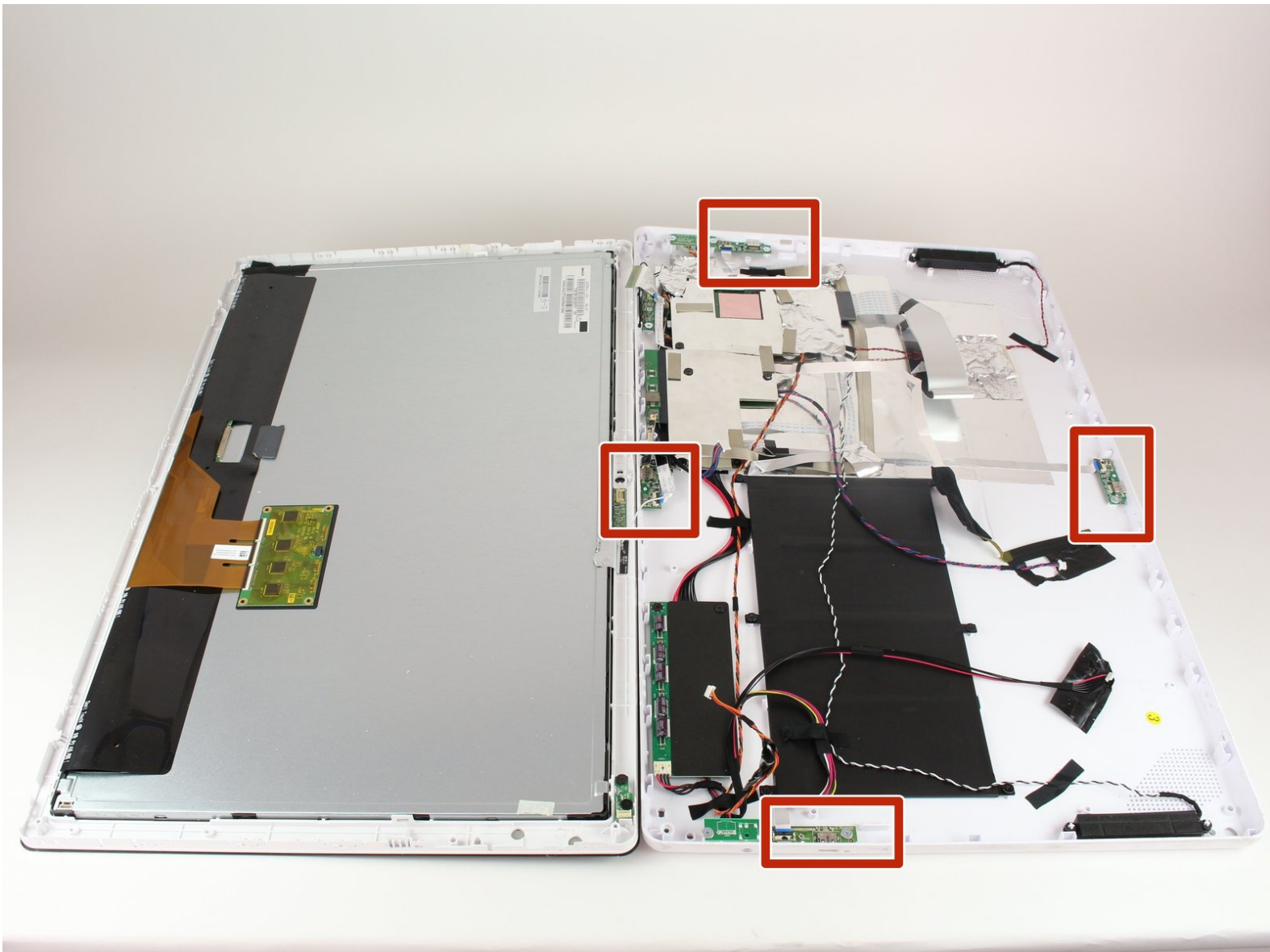




# Nabi Big Tab HD24 Nabi Port Replacement

Replacing the nonfunctional Nabi port so that when you connect devices the ports will function.

Written By: Kelvin Cao



---

## INTRODUCTION

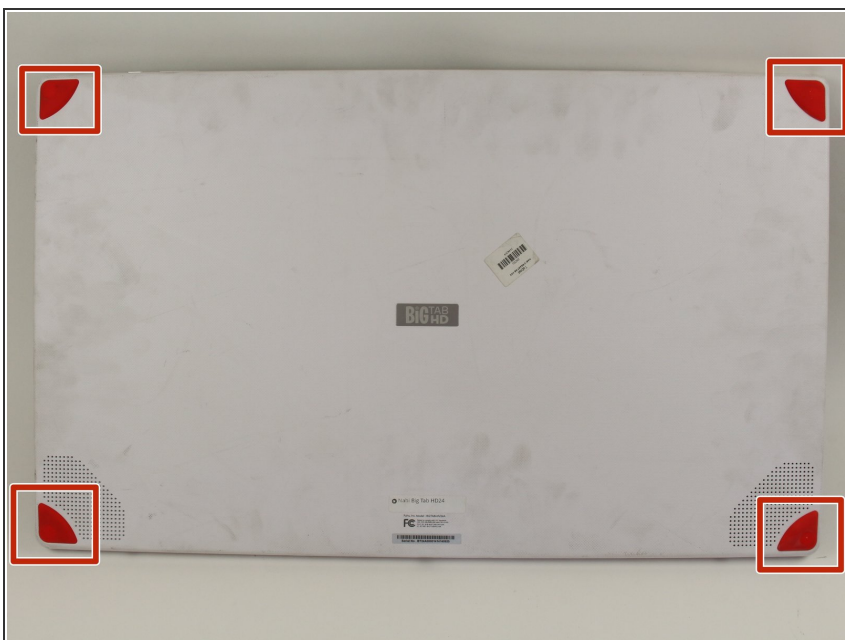
There are four Nabi ports that are available to use. The Nabi ports are specific ports from Nabi that requires a USB adapter in order to connect a USB device to the tablet. Before replacing the Nabi port, determine which port is faulty, as there are four ports to choose from.



### TOOLS:

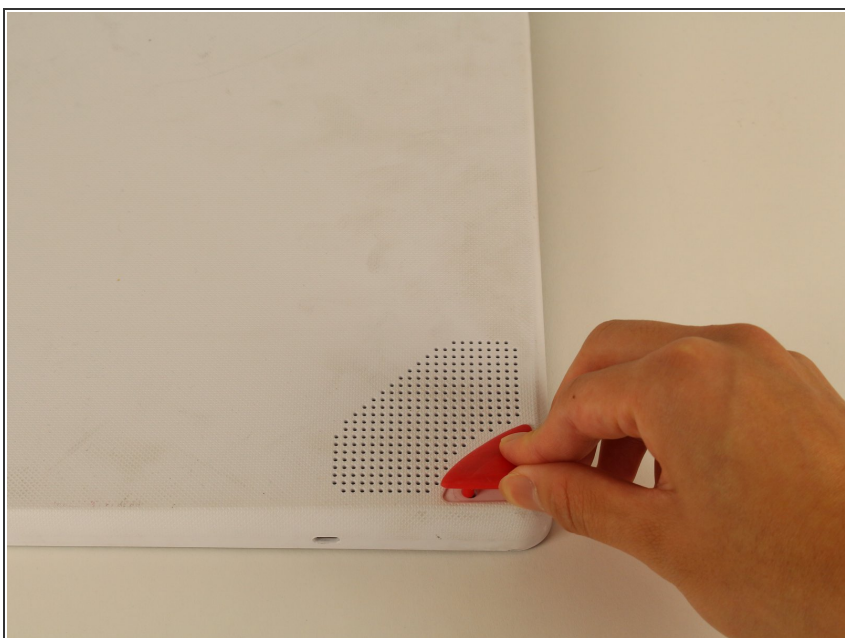
- [Phillips #1 Screwdriver](#) (1)
  - [iFixit Opening Tools](#) (1)
  - [Metal Spudger Set](#) (1)
-

## Step 1 — Back Assembly



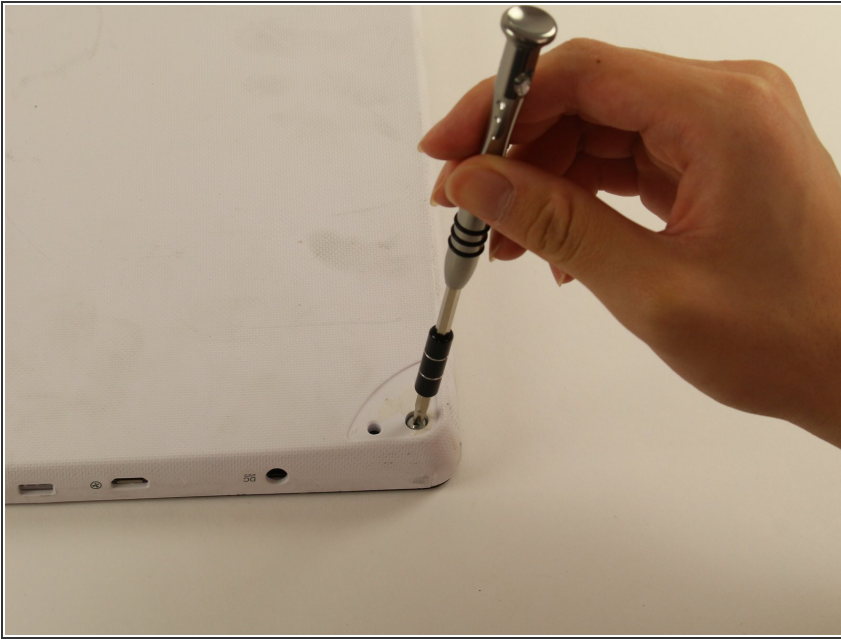
- ❗ Ensure that the tablet is facing you with the screen on the table.
- Locate the four red rubber stops at the corners.

## Step 2



- Use your fingers to carefully peel them off the device to reveal the screws underneath.

## Step 3



- Use a Phillips #1 screwdriver to remove the 9.5 mm screw in each of the four corners.

## Step 4



- ✦ Flip the tablet over such that the screen is facing upwards.
- Locate the the 4 small openings on the sides of the tablet.
- ⓘ There should be 2 on the bottom of the tablet, 1 on each side of the tablet viewing it from the front as if you were using it.
- ⚠ Do not confuse the openings with the charging port or the USB ports. The openings will be labelled with an icon of a small fan, the Nabi logo.

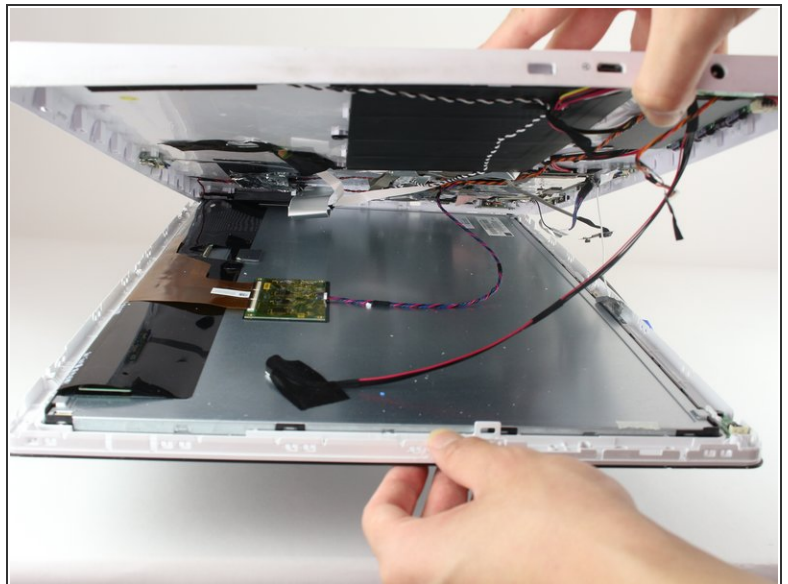


## Step 5



- Insert a metal spudger into one of the openings and carefully pop the device open by applying a steady downward force.
- Repeat for the other three openings.

## Step 6

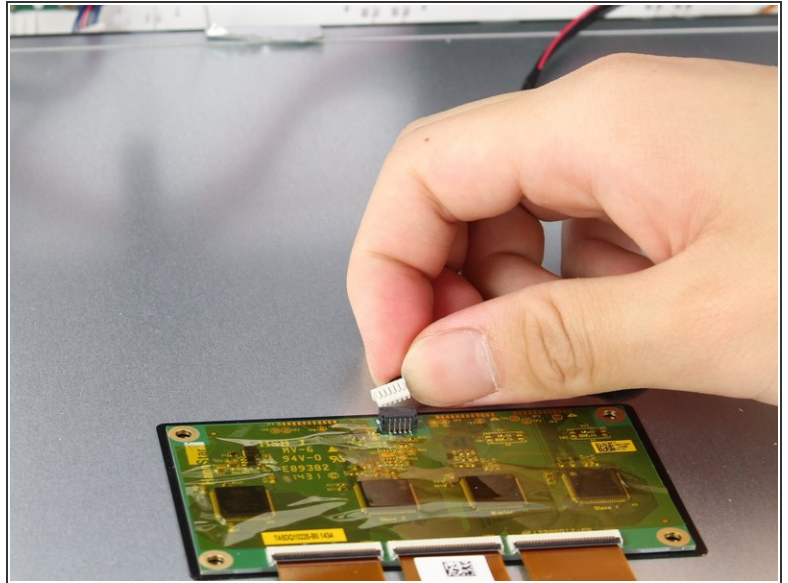
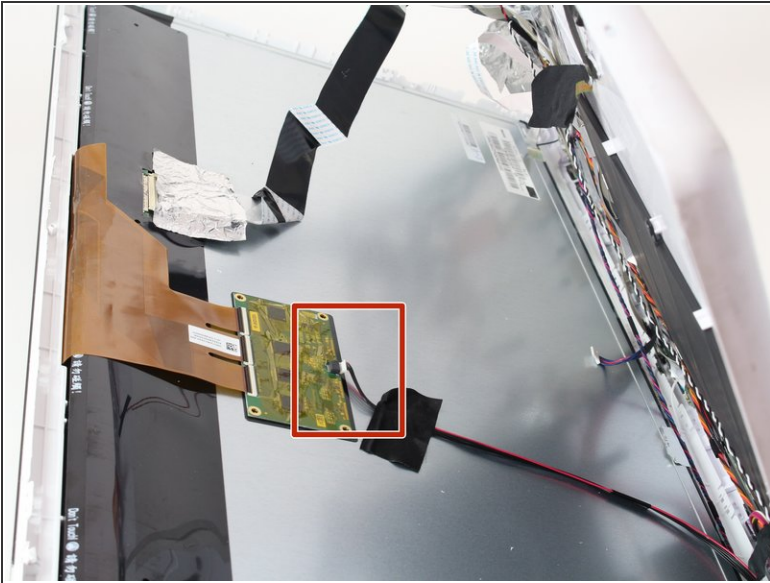


✦ Flip the device over so that the back assembly is facing you.

- Use a plastic opening tool to carefully pry open the device from its hinges.

⚠ Take care when opening the device as there are cables running internally that are connected to both the front and the back assemblies.

## Step 7



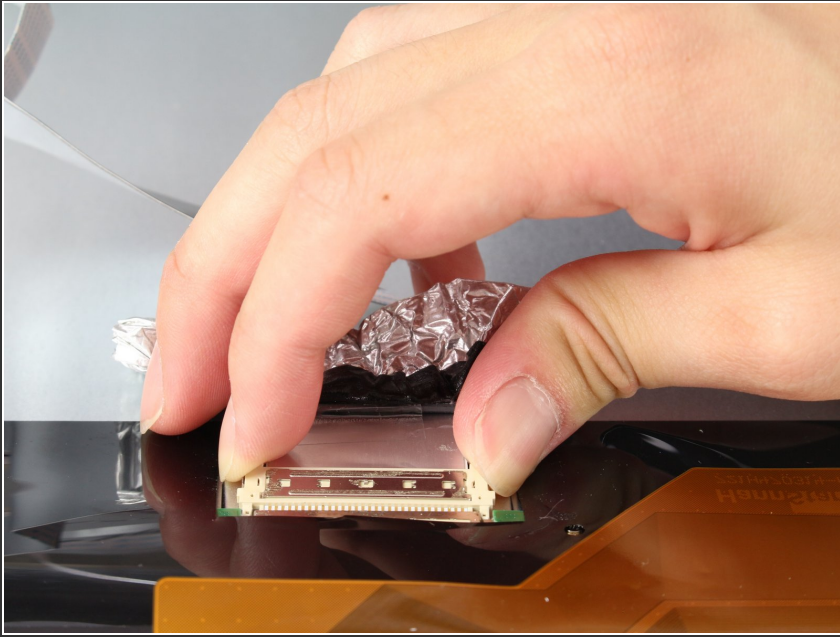
- Locate the white port that connects the back panel to the circuit board on the back of the display.
- Carefully pull the plastic connector straight out.

## Step 8



- ⚠ Be careful of the aluminum foil tape, as it can easily rip.
- Carefully lift up the aluminum foil tape with your fingers so that the ribbon connector reveals itself.
- ⚠ Do not try to pull the ribbon cables off the screen as there is a plastic piece surrounding the ribbon cables glued onto the metal display.

## Step 9



- Firmly press the two switches located on the sides of the connector and disconnect the connector from its connections.
- ⓘ Leave the connector disconnected but still intact with the metal display.

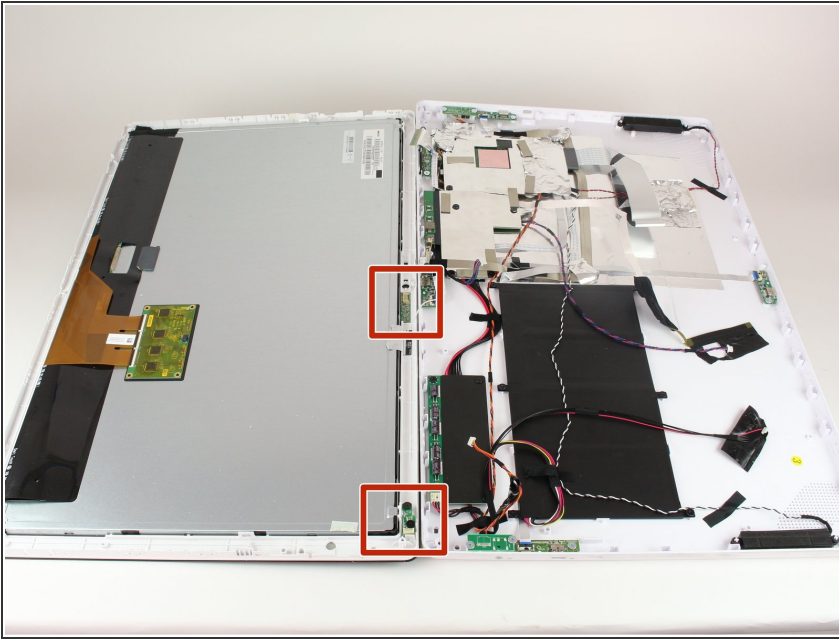
## Step 10



- Use a plastic opening tool and carefully push it underneath the grey plastic case surrounding the ribbon cable.
- Apply a downward force to carefully peel the grey plastic off of the metal display.

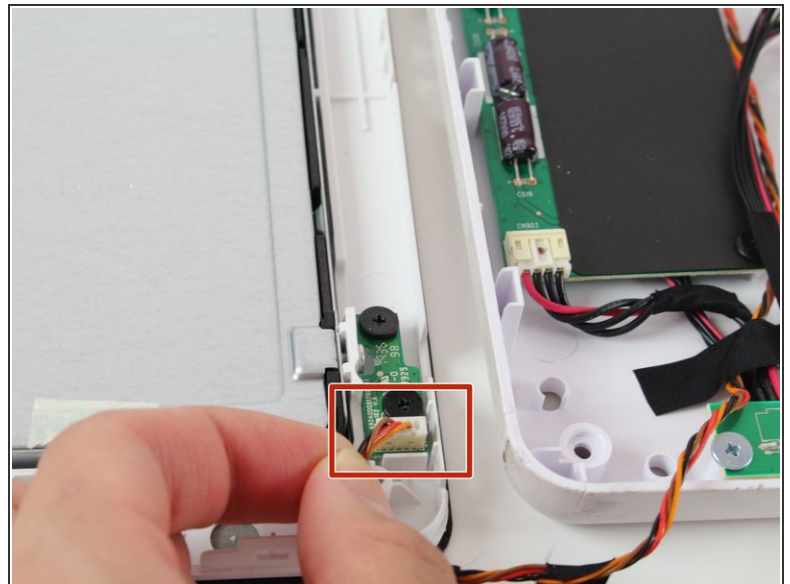
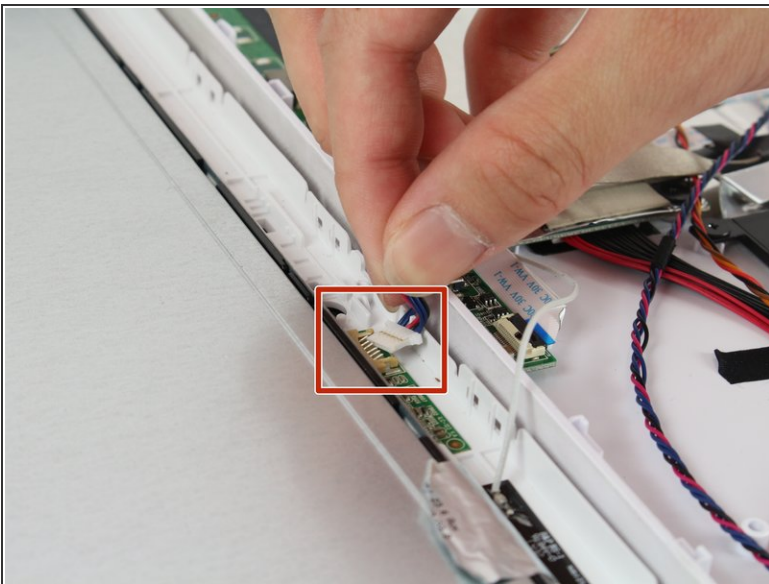


## Step 11



- Locate the two cables running on both sides of the device found at the bottom side of the screen.

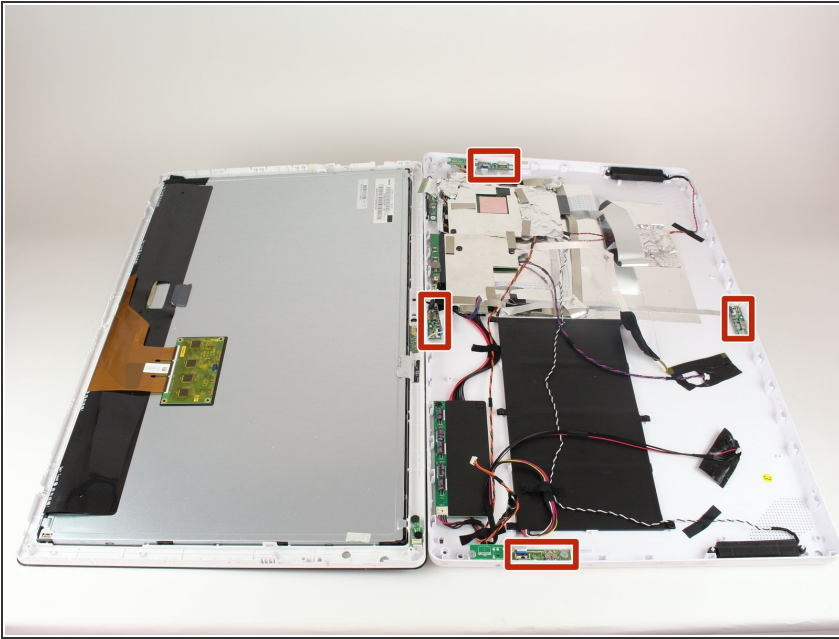
## Step 12



- Carefully grab both sides of the white plastic piece with your fingers and gently pull directly upward.
- ⚠ Do not pull from the red and black cable as it is not very sturdy and may come undone from the connector.

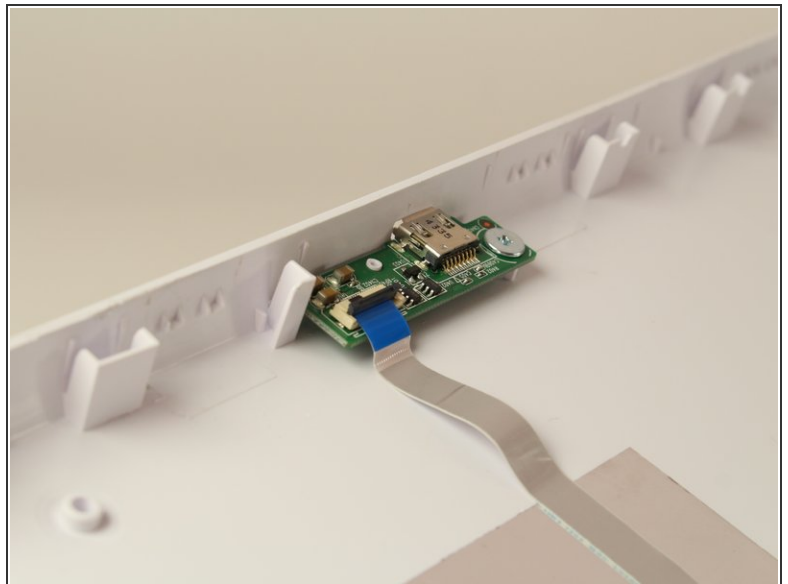
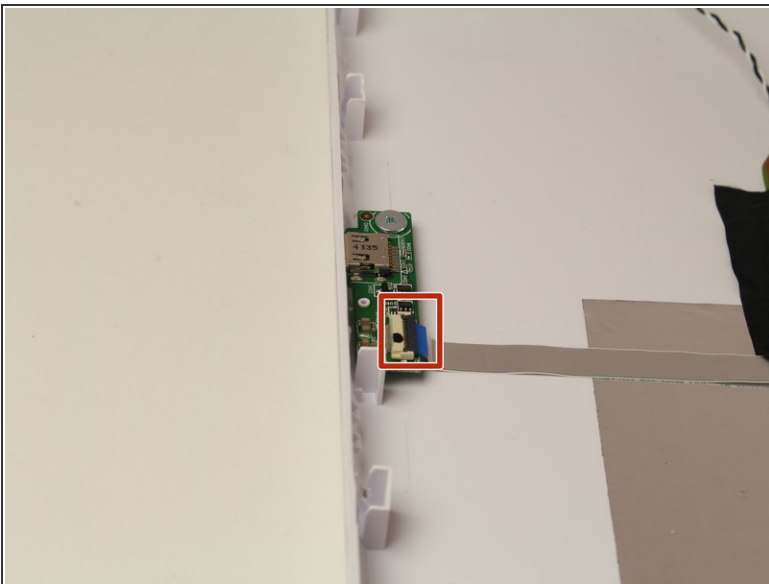


## Step 13 — Nabi Port



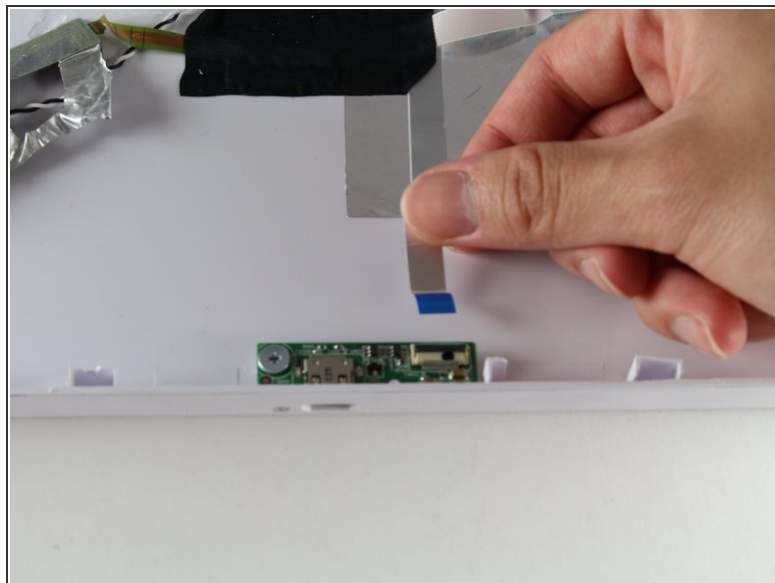
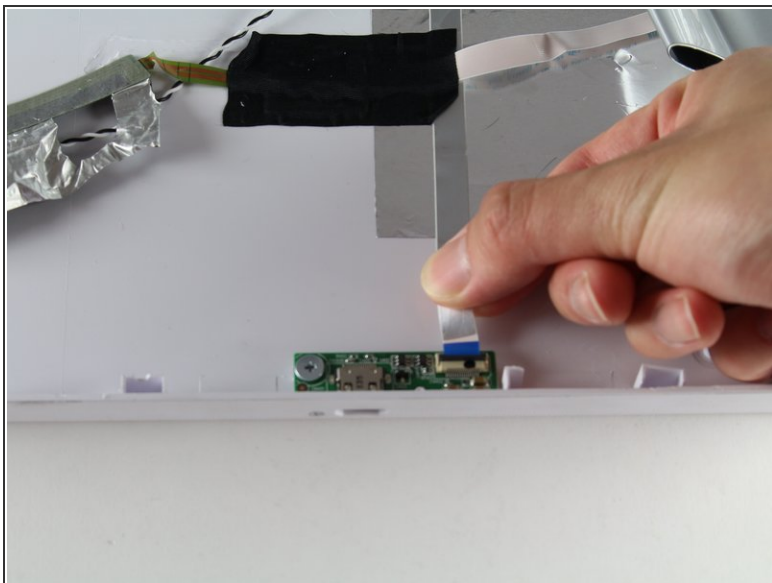
- Locate the nonfunctional Nabi port; there should be one on each side of the tablet.
- ⓘ The circuit board of the Nabi Port has a ribbon connector attached to it and there should be a blue strip of tape at the end of the ribbon connecting to the board.

## Step 14



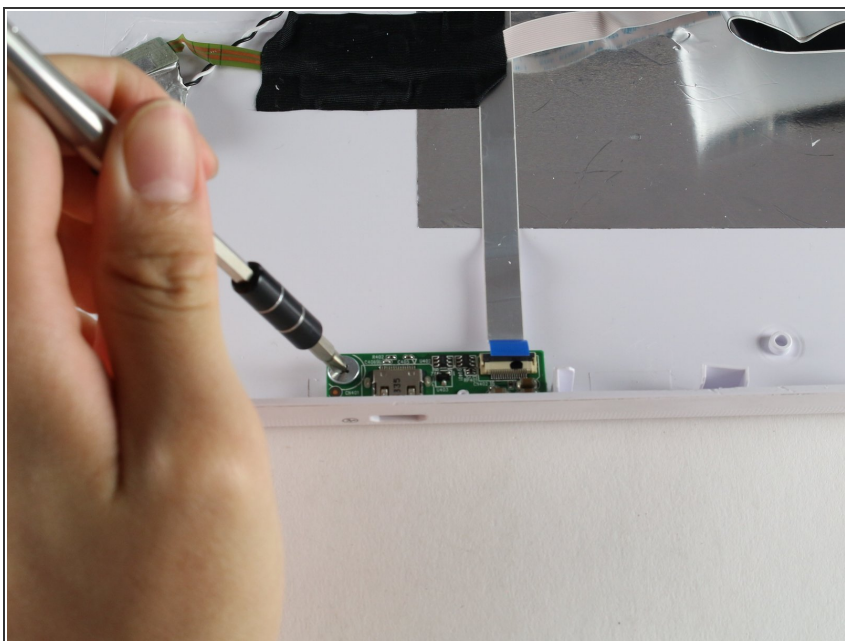
- Locate the black tab which secures the blue end of the ribbon cable to the Nabi port.
- Lift up the black tab to release the ribbon cable.

## Step 15



- Pull the ribbon connector away from the circuit board to disconnect it.

## Step 16



- Unscrew the 4.5 mm silver screw holding the Nabi Port in place.
- Lift out the Nabi Port and replace it with your new one.

To reassemble your device, follow these instructions in reverse order.