



# Nabi Big Tab HD24 Screen Replacement

Replacing the cracked screen so you can get your tablet to respond to your touches.

Written By: Kelvin Cao



## INTRODUCTION

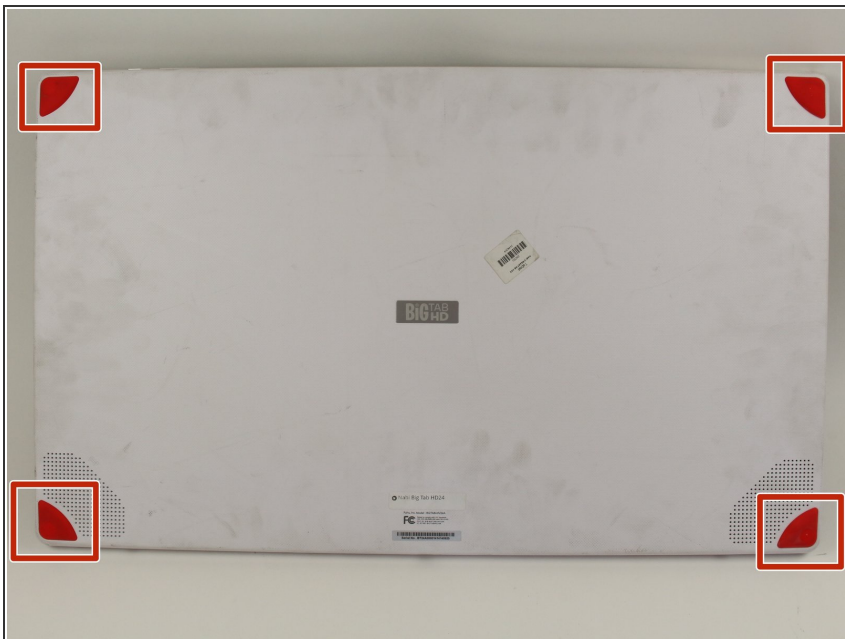
If your screen is cracked be careful when trying to pry off the screen. The broken shards of glass on the screen may cut you, so be extremely careful. The screen is glued onto the display with some type of adhesive, so it will take some time to get it off. This process would take a lot of time so be patient. Do not try to pry off the screen from only one corner or side since it is glass you will just shatter the whole screen.



### TOOLS:

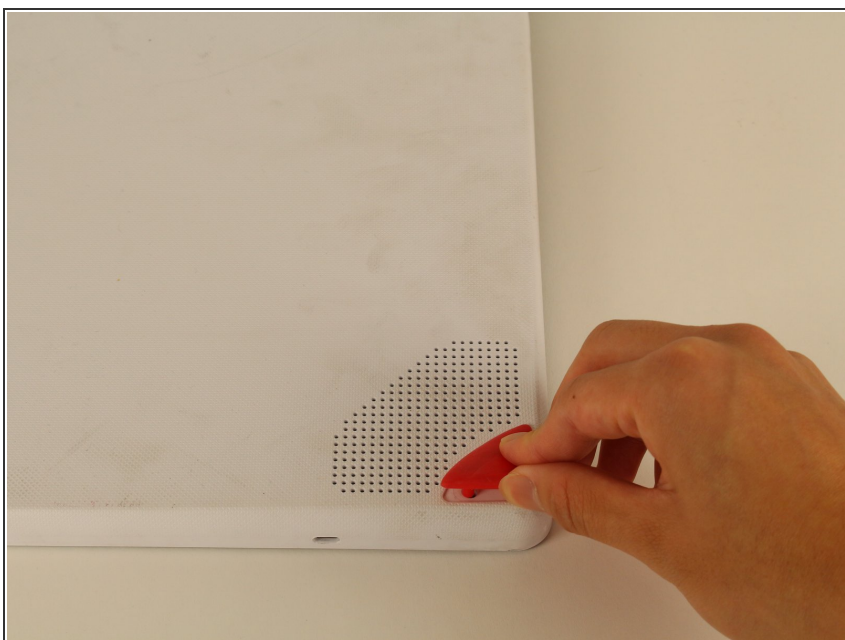
- [Phillips #1 Screwdriver](#) (1)
  - [iFixit Opening Tools](#) (1)
  - [Metal Spudger Set](#) (1)
  - [Jimmy](#) (1)
  - [iFixit Opening Picks set of 6](#) (1)
  - [Heat Gun](#) (1)
  - [iOpener Kit](#) (1)
-

## Step 1 — Back Assembly



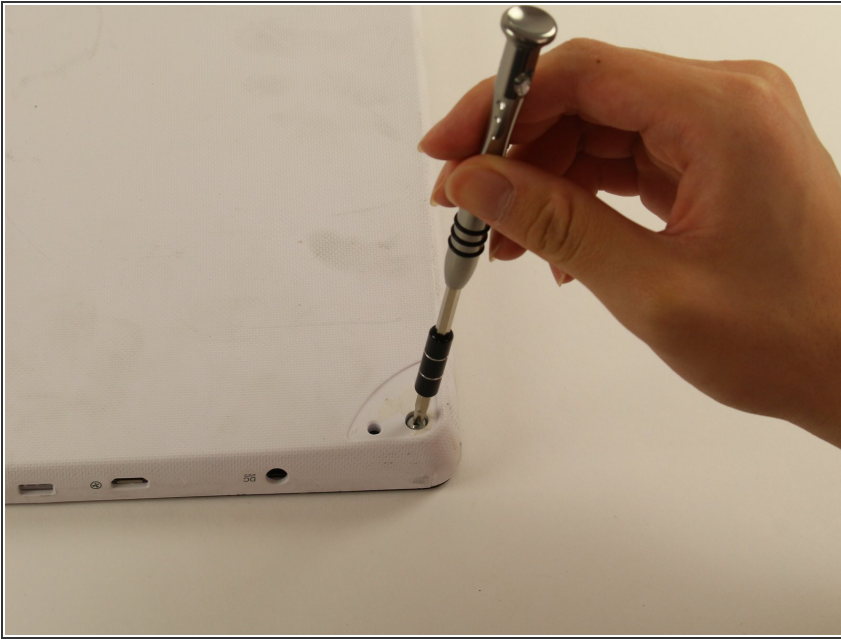
- ❗ Ensure that the tablet is facing you with the screen on the table.
- Locate the four red rubber stops at the corners.

## Step 2



- Use your fingers to carefully peel them off the device to reveal the screws underneath.

## Step 3



- Use a Phillips #1 screwdriver to remove the 9.5 mm screw in each of the four corners.

## Step 4



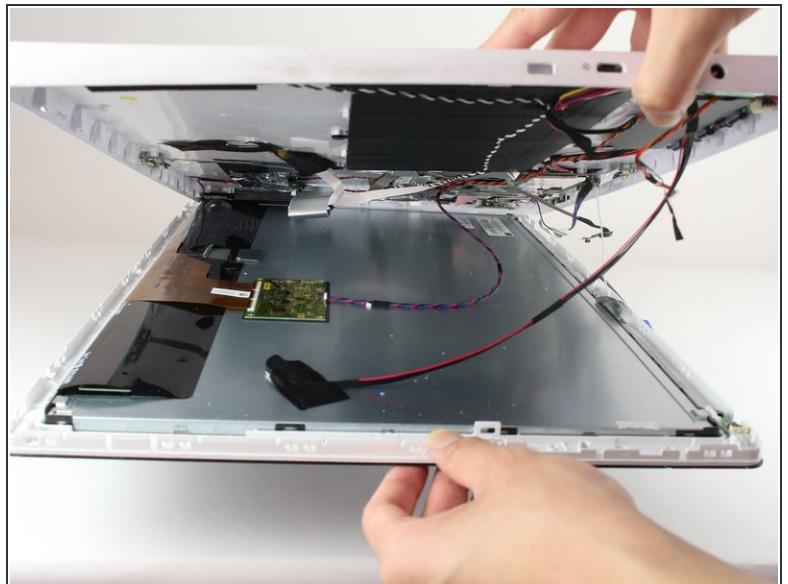
- ✦ Flip the tablet over such that the screen is facing upwards.
- Locate the the 4 small openings on the sides of the tablet.
- i There should be 2 on the bottom of the tablet, 1 on each side of the tablet viewing it from the front as if you were using it.
- ⚠ Do not confuse the openings with the charging port or the USB ports. The openings will be labelled with an icon of a small fan, the Nabi logo.

## Step 5



- Insert a metal spudger into one of the openings and carefully pop the device open by applying a steady downward force.
- Repeat for the other three openings.

## Step 6



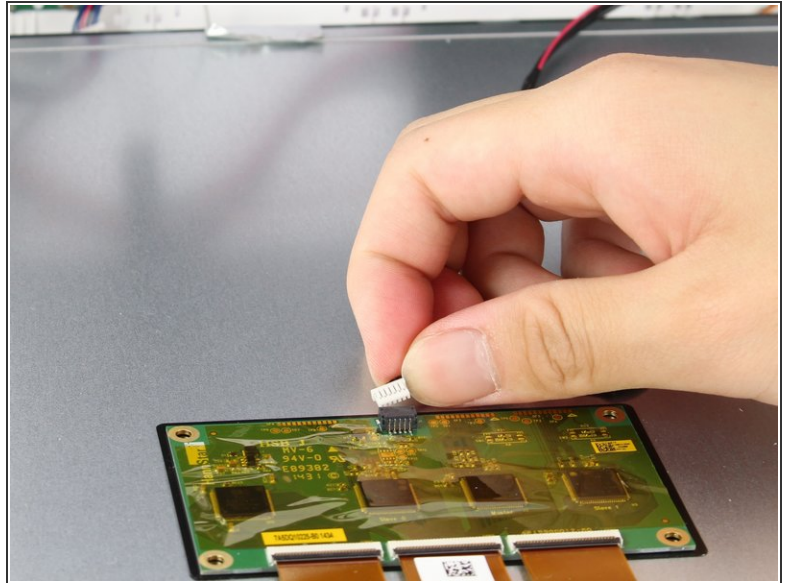
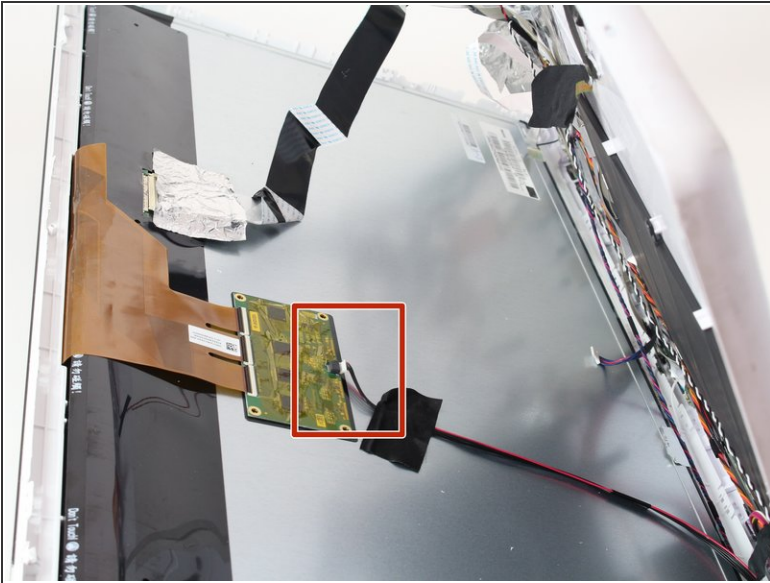
✦ Flip the device over so that the back assembly is facing you.

- Use a plastic opening tool to carefully pry open the device from its hinges.

⚠ Take care when opening the device as there are cables running internally that are connected to both the front and the back assemblies.



## Step 7



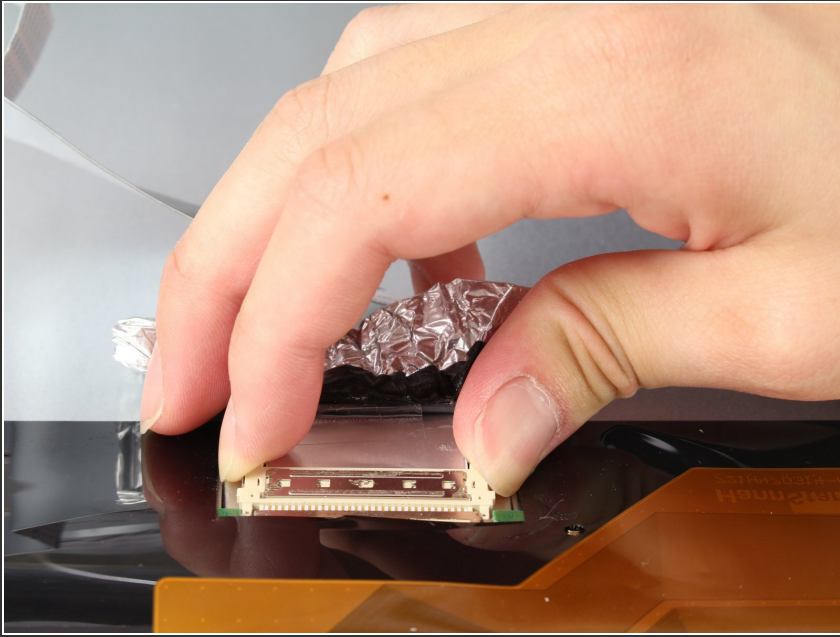
- Locate the white port that connects the back panel to the circuit board on the back of the display.
- Carefully pull the plastic connector straight out.

## Step 8



- ⚠ Be careful of the aluminum foil tape, as it can easily rip.
- Carefully lift up the aluminum foil tape with your fingers so that the ribbon connector reveals itself.
- ⚠ Do not try to pull the ribbon cables off the screen as there is a plastic piece surrounding the ribbon cables glued onto the metal display.

## Step 9



- Firmly press the two switches located on the sides of the connector and disconnect the connector from its connections.
- ⓘ Leave the connector disconnected but still intact with the metal display.

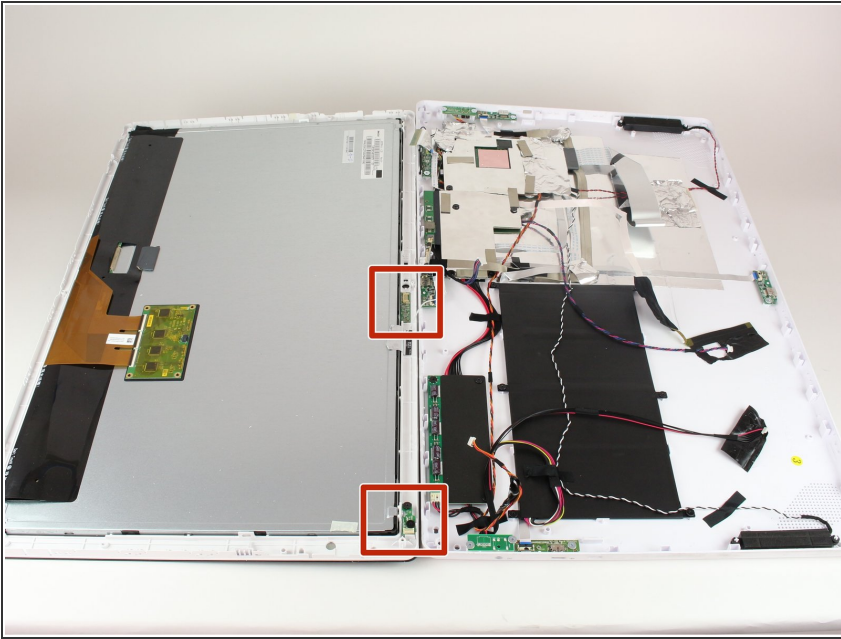
## Step 10



- Use a plastic opening tool and carefully push it underneath the grey plastic case surrounding the ribbon cable.
- Apply a downward force to carefully peel the grey plastic off of the metal display.

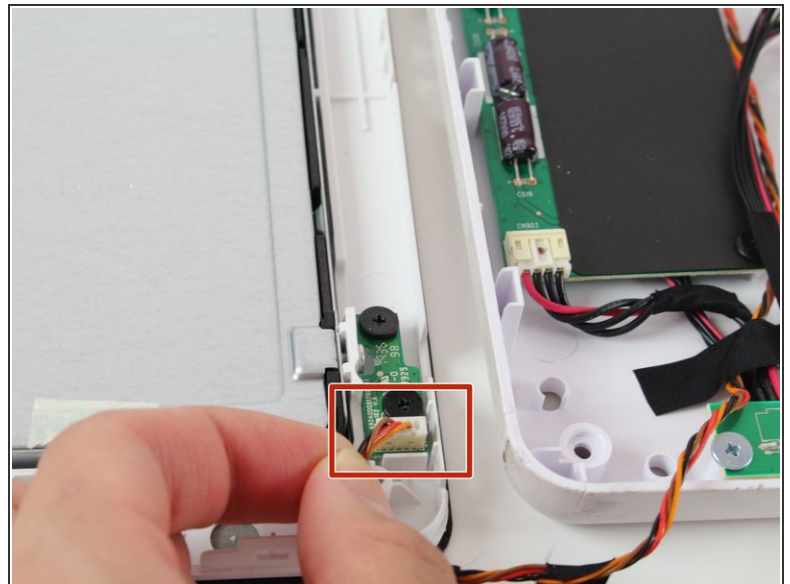
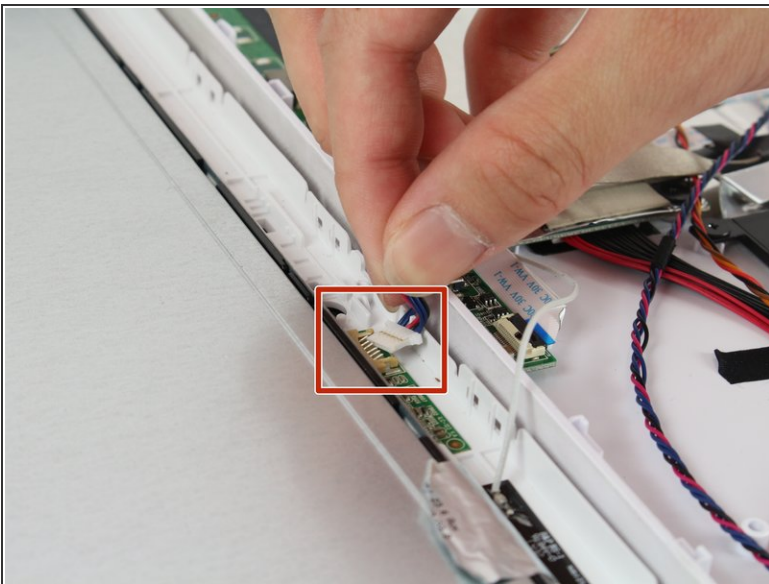


## Step 11



- Locate the two cables running on both sides of the device found at the bottom side of the screen.

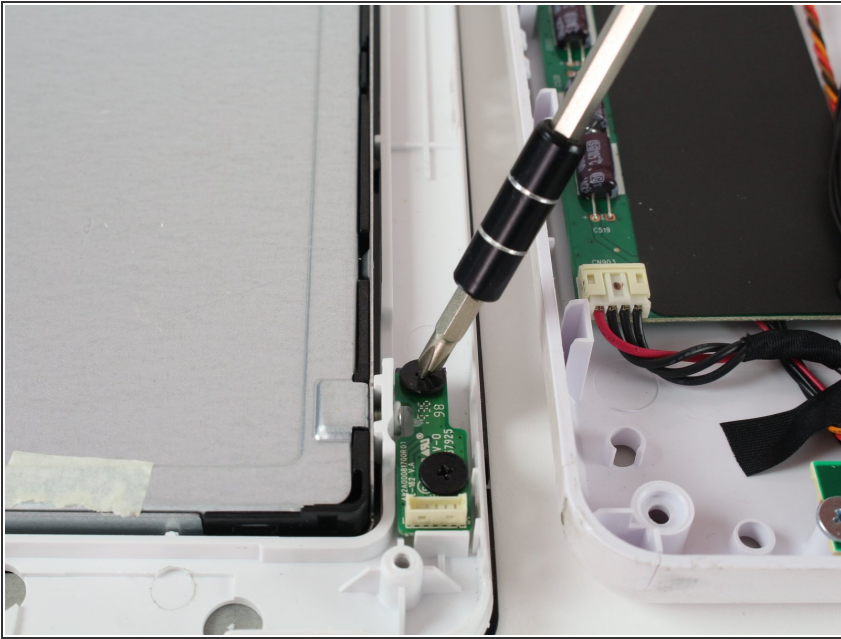
## Step 12



- Carefully grab both sides of the white plastic piece with your fingers and gently pull directly upward.
- ⚠ Do not pull from the red and black cable as it is not very sturdy and may come undone from the connector.

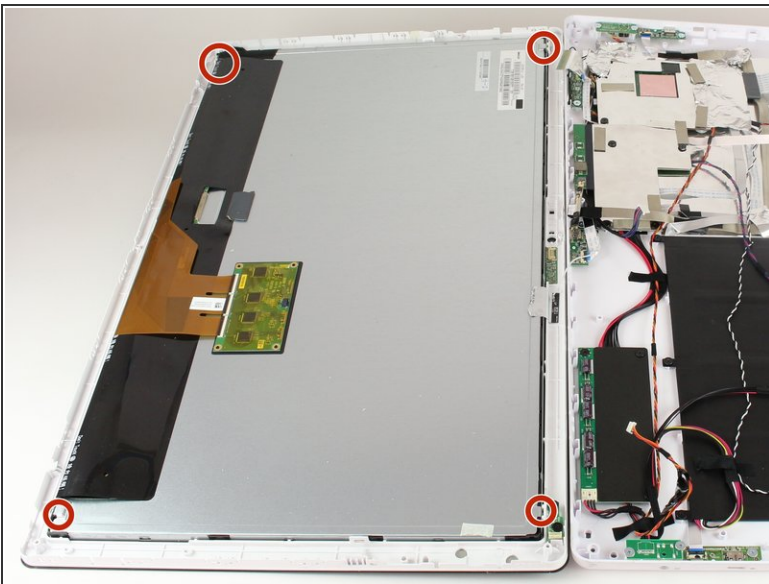


## Step 13 — Screen



- Take out the two black 4.5 mm screws with your Phillips # 1 screwdriver and remove the circuit board.
- ⓘ You want to remove this circuit board so you can remove the silver screw that the circuit board is blocking.

## Step 14



- Remove each of the 6.5 mm silver screws located on the edges of the display's corners.

## Step 15



- Use a heating gun to heat up the side up the side of the screen you want to pry open.
- ⓘ Evenly distribute the heat around the frame of the screen for optimal results.
- ⚠ Do not focus the heat on one specific point for long periods of time as this may cause the glass to crack.

## Step 16



- Place several [iOpeners](#) along the sides of the screen that you are not heating up with the heat gun.
- ⓘ Spread them out around the device so the heat can evenly melt the adhesive on the screen.
- ⚠ Be careful when handling the iOpeners as they are hot and contain a gel that can burn skin if exposed from the packet.

## Step 17



- Use the jimmy and stick it in between the screen and the frame and wiggle the jimmy around to try and loosen the glass screen from the frame.
- ⓘ It may take some strength and patience since the adhesive is still very sticky.

## Step 18



- Once you create a space between the screen and the frame stick an i fixit pick in the crack to keep the crack open.
- Keep inserting more picks every time you create some space, so eventually the screen will be completely separated from the frame.
- Use the plastic opening tool to carefully remove the screen from the frame.

To reassemble your device, follow these instructions in reverse order.