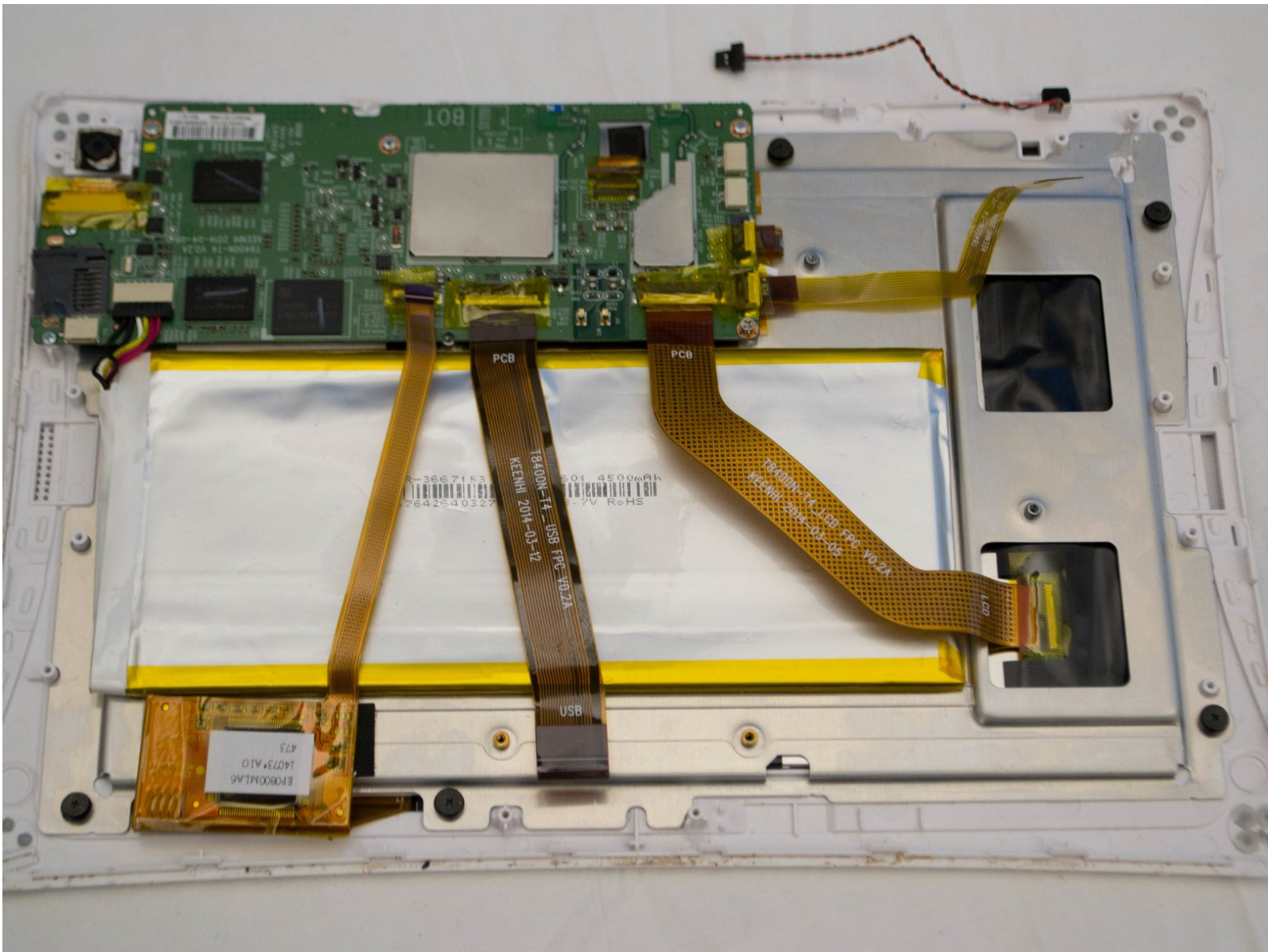




# Nabi DreamTab HD8 Battery Replacement

With a malfunctioning or damaged battery your DreamTab will not function properly. This guide will take you through the replacement process.

Written By: Luis Delgado



## INTRODUCTION

The battery is one of the most important components of any portable device, because without power, the device will not be able to function. The battery equipped in the DreamTab resembles an aluminum foil-wrapped chocolate bar which is very malleable. The battery itself is attached to the device using strong adhesive, so it is important to remove the battery with care as it will bend if excessive force is used. We recommend using the metal opening tools only if the plastic opening tools don't provide enough leverage to remove the battery from the adhesive.

---

### TOOLS:

- [iFixit Opening Tools](#) (1)
  - [64 Bit Driver Kit](#) (1)
  - [Plastic Cards](#) (1)
  - [iFixit Opening Picks set of 6](#) (1)
-

## Step 1 — Front Panel Assembly



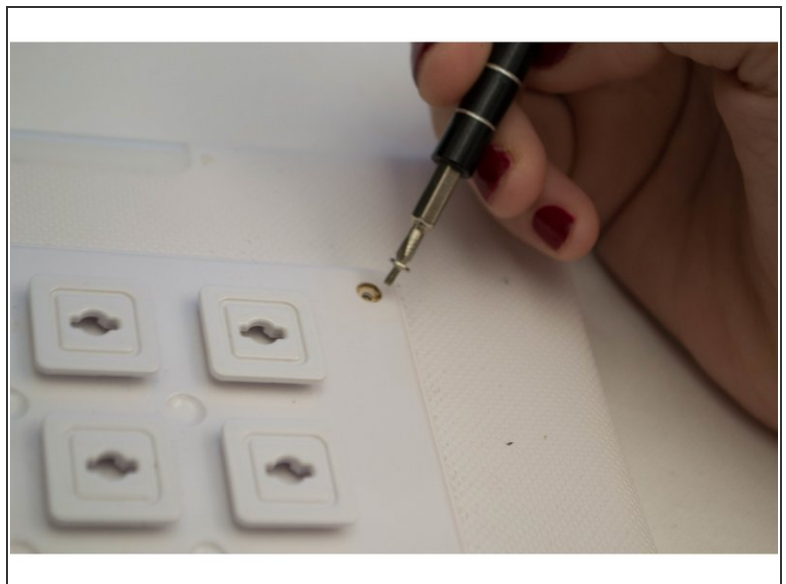
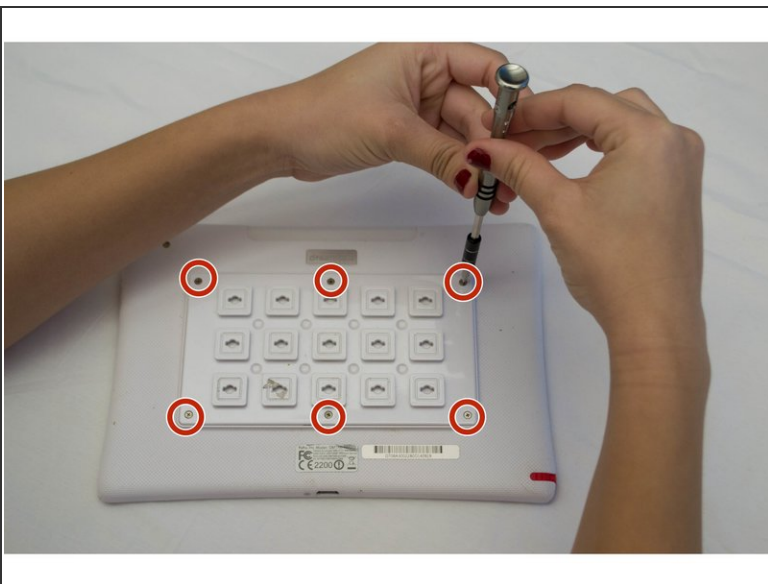
- Position the Nabi DreamTab onto a non-metallic surface so that the screen is facing towards the ceiling, and the DreamTab logo appears closest to you.
- Remove the red silicone case from the Nabi DreamTab HD8.
- ⓘ These steps are specific to the included manufacturer case. If you have a different protective case, please refer to the respective manual for removal.

## Step 2



- Turn it upside down, ensuring the small black circular camera is in the upper left hand corner.
- ⚠ Proceeding beyond here will void the manufacturer's warranty. If you wish to continue, follow these steps carefully.

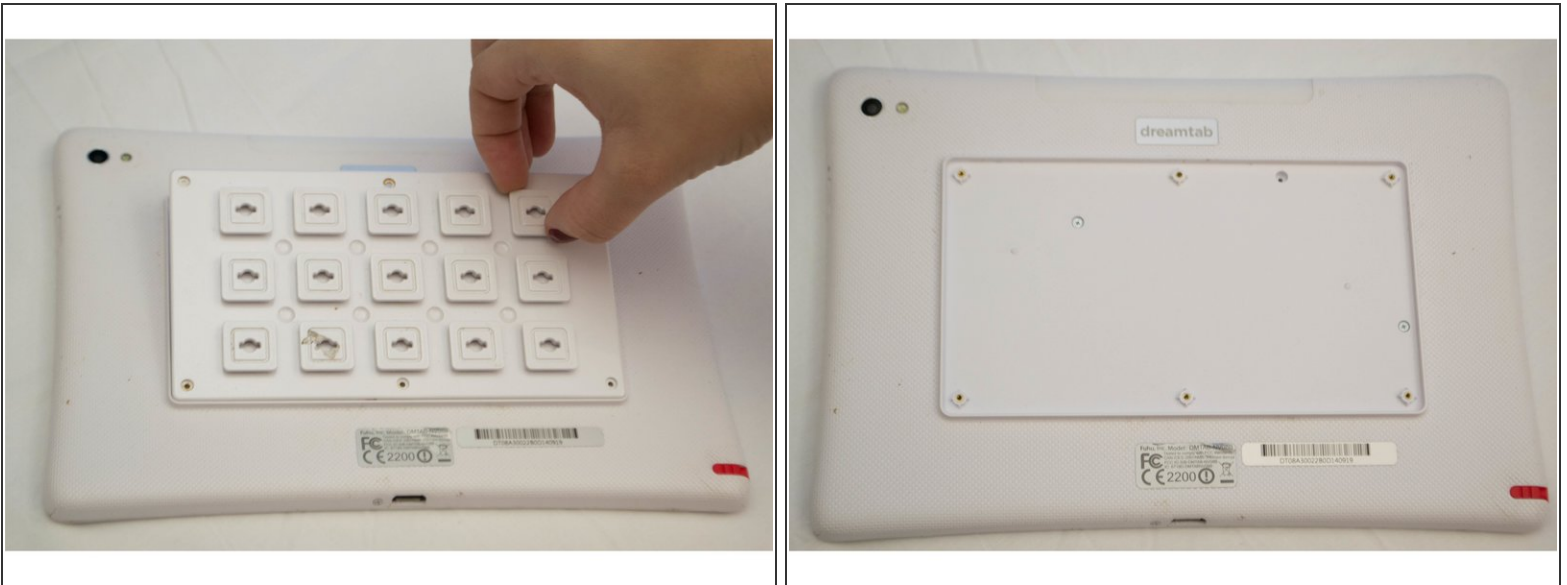
## Step 3



- Remove the six 2.5 mm JIS #000 screws attaching the custom grid to the back panel.



## Step 4



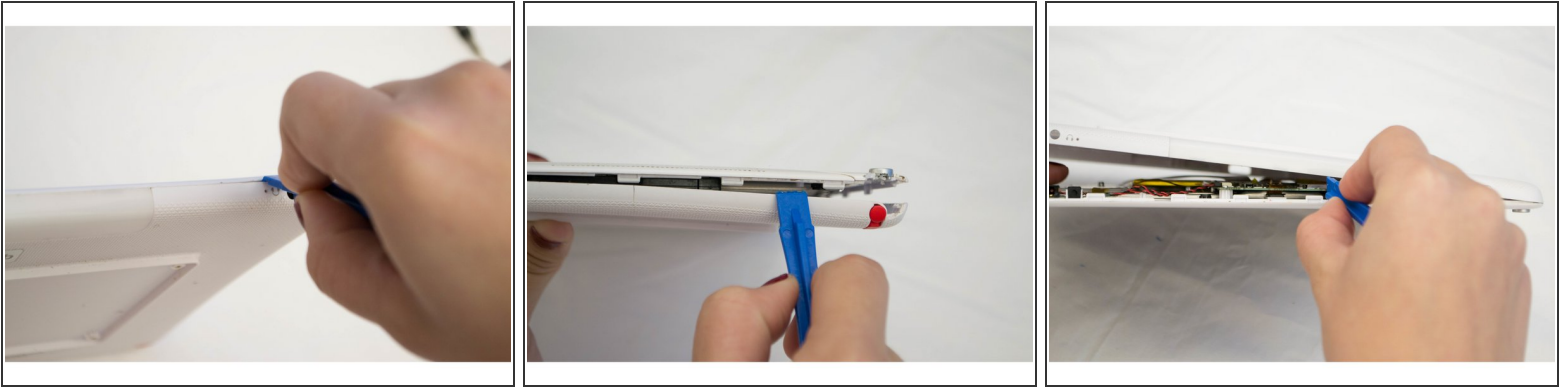
- Grasp one of the protruding squares and gently lift off the back plate. Place it aside for later reassembly.
  - ⓘ This piece should come off very easily. If you have trouble removing it, all of the screws may not be completely removed. Check and proceed.
  - ⓘ Do not confuse the golden threads for screws.

## Step 5



- Remove the three 3.5mm screws using the J-0 screwdriver attaching the back panel to the device.

## Step 6



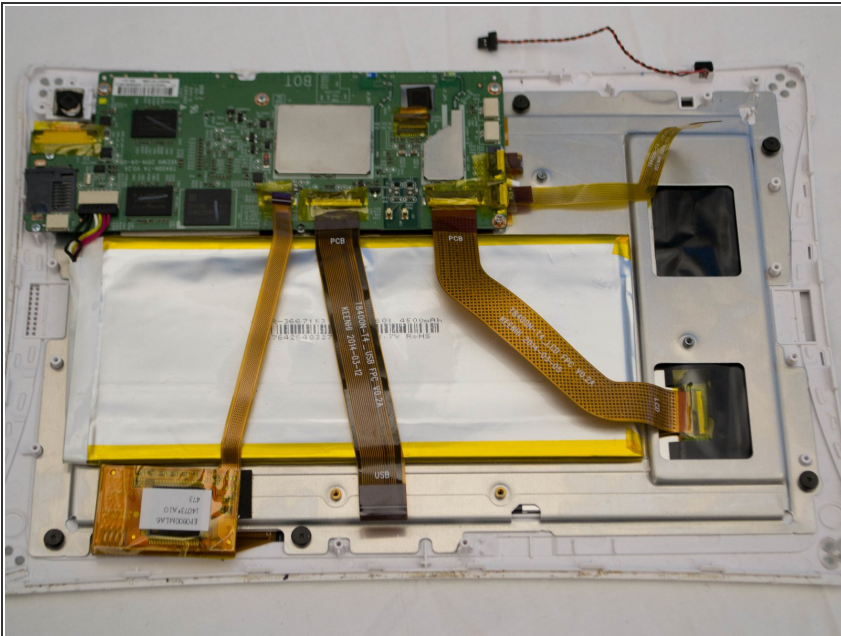
- Rotate the top of the device towards you so that the audio jack appears on the right side of the device.
  - ❗ The audio jack will have a small symbol of headphones next to a small 3.5mm diameter hole.
- Wedge the plastic opening tool between where the front and back case panels meet near the audio jack.
- Pry the device open using moderate force until you hear a clicking sound. This is the sound of the clips unlocking.
- Move along the perimeter of the entire device using the same prying motion to gradually separate the front and back panels.
- Once the edges are open return to the same starting position next to the audio jack.
- ❗ During this step, you may crack some parts of the case. Gently pry around the speakers, audio jack and charging cable ports to reduce this damage.

## Step 7



- Once you've completed separating the front and back panels, place the device back onto the table, display facing downward and camera at the top left.
- Lift off the back panel and rotate the device 180 degrees while the screen is facing down.

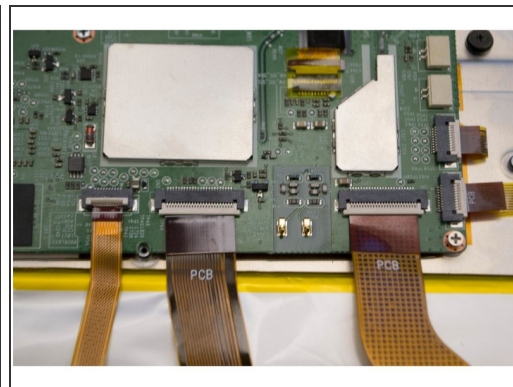
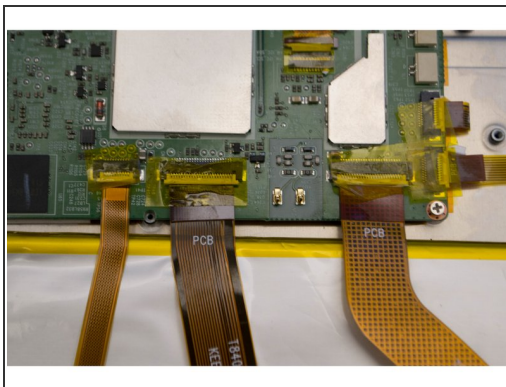
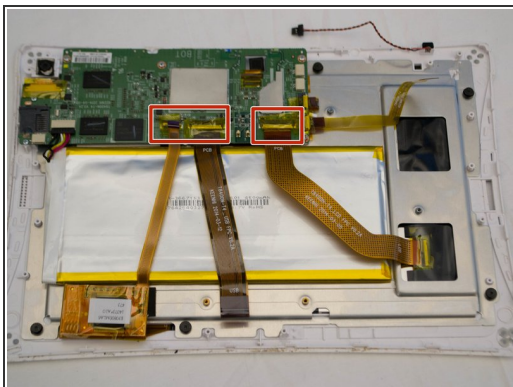
## Step 8 — Battery



- ⓘ Before removing the battery, be aware that it is held together by a strong adhesive. The battery itself is very malleable and flimsy, so make sure to handle it with care.

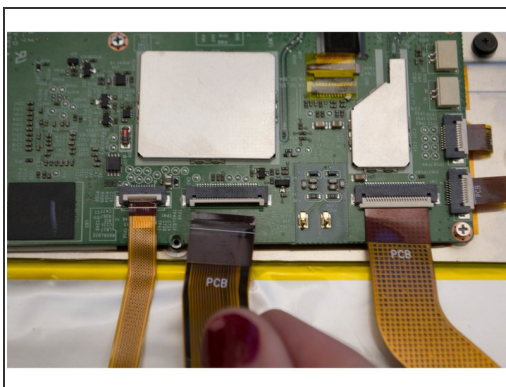
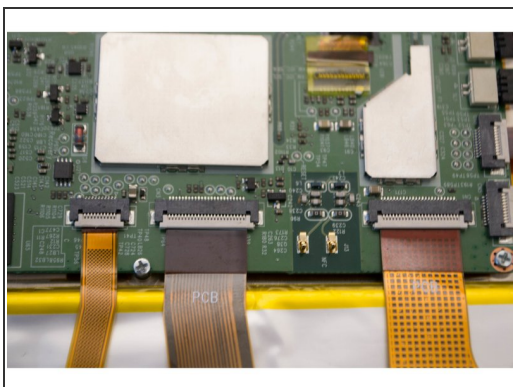


## Step 9



- Remove the remaining yellow plastic film from the surrounding connectors so that the battery can be easily removed.

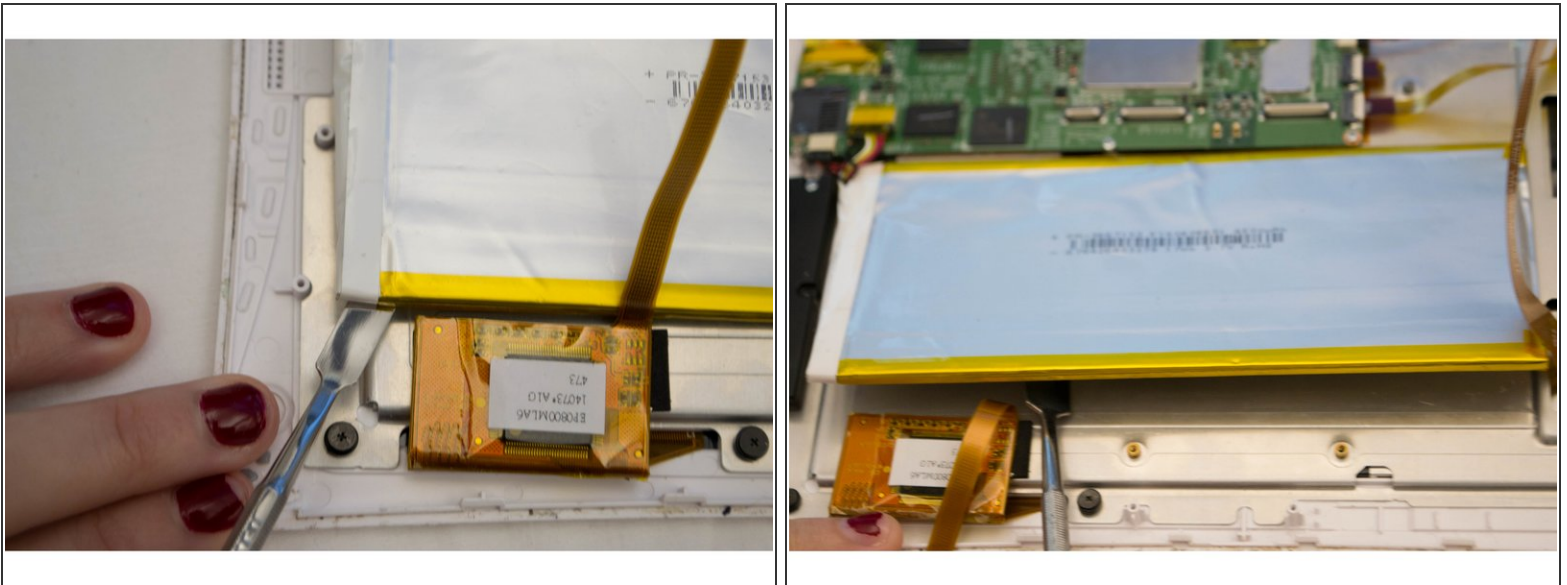
## Step 10



- Disconnect the two plastic connectors overlapping the battery from the motherboard.



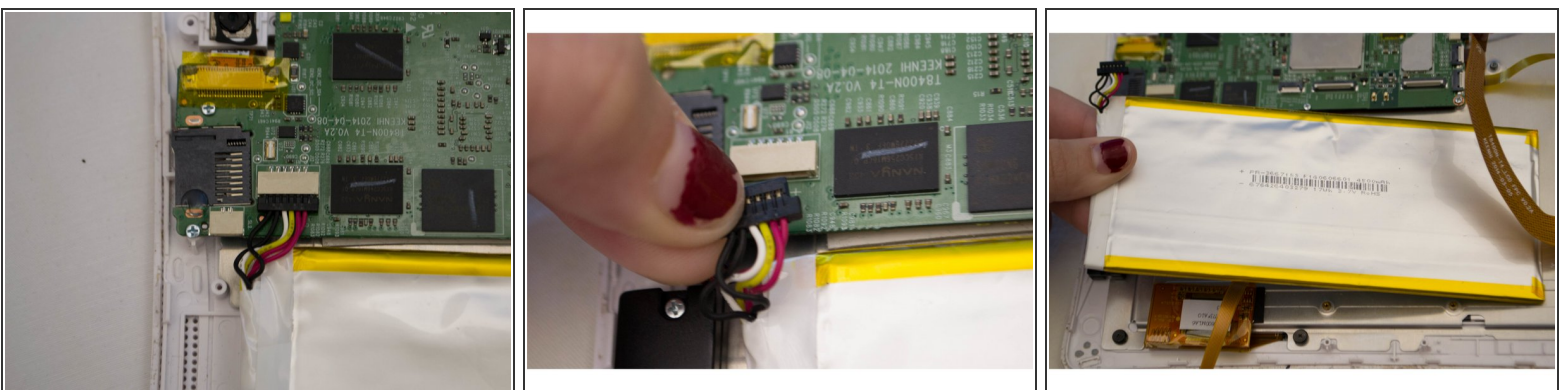
## Step 11



⚠ These images show the use of a metal spudger. Use a plastic card or opening pick to avoid puncturing the battery.

- Slide a plastic card or opening pick between the battery and case. Gently pry the battery out of the case.

## Step 12



- Disconnect the final battery connector from the motherboard.
- Remove the battery.

To reassemble your device, follow these instructions in reverse order.