



# Navi Falk Neo550 Battery Replacement

Replacing the battery with the Navi Falk Neo550

Written By: John Maier



## Step 1 — Unscrew lower edge cover



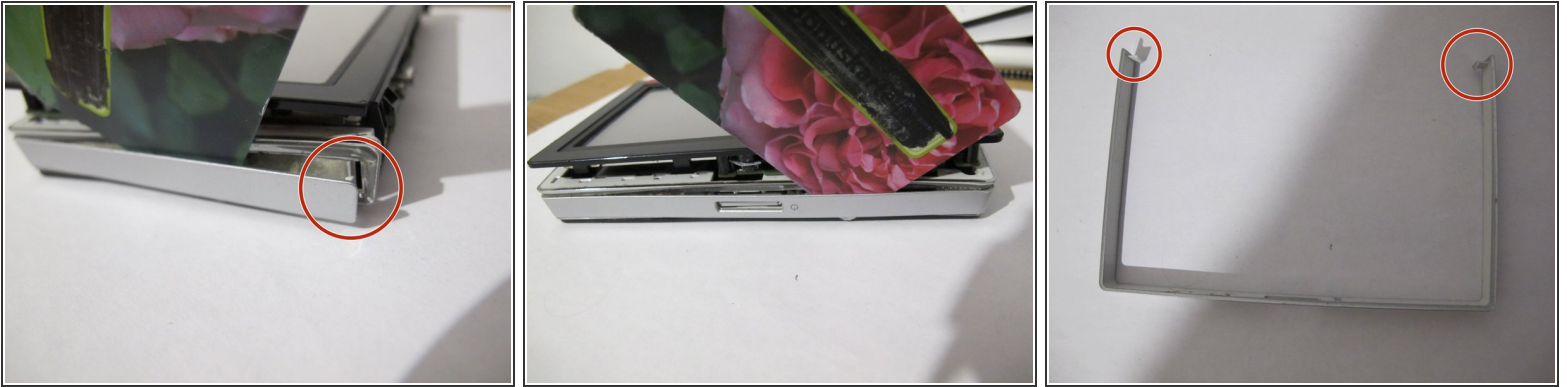
- Using a PH 0 screwdriver, loosen the four screws on the underside of the device.

## Step 2 — Release the screen



- Pull the plastic card at the lower corners, starting at the bottom of the screen.

### Step 3 — Remove the edge cover



- At one of the bottom corners, remove the edge cover by sliding a plastic card from the front of the navigation system under the edge.
- The edge strip is attached with double-sided tape, the plastic card can be pushed with a sawing movement gradually under the side cover

 **Caution:** At the two lower corners, the cover strip is inserted into the housing with a latching lug.

### Step 4 — remove inner edge cover



- Use the screwdriver PH 0 to remove the two screws at the upper edge.

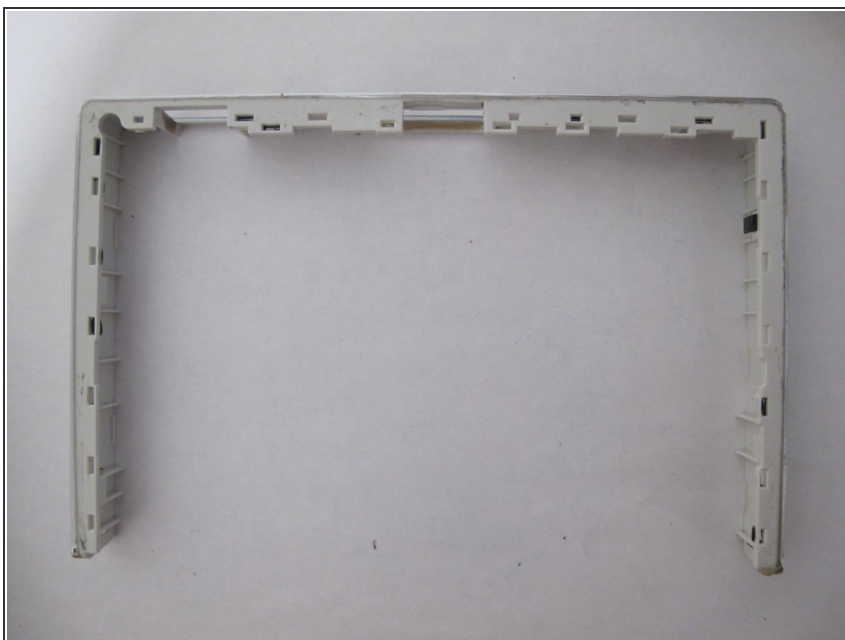


## Step 5 — Separate wall



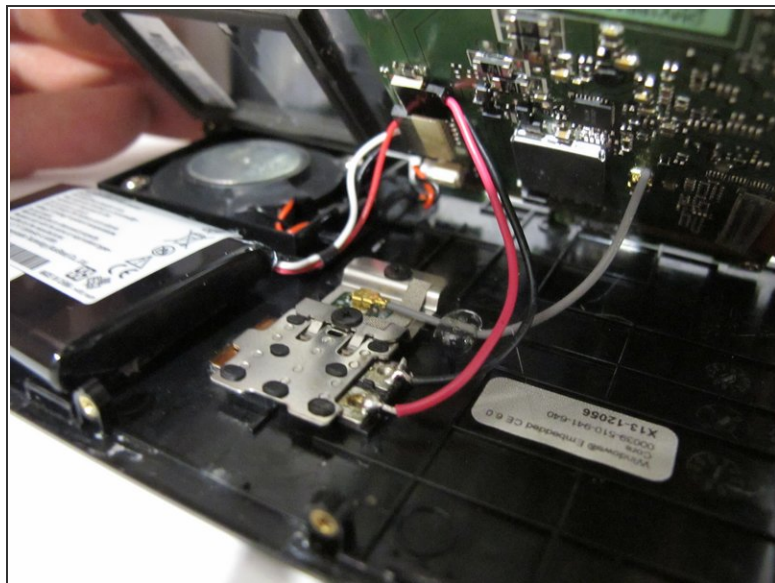
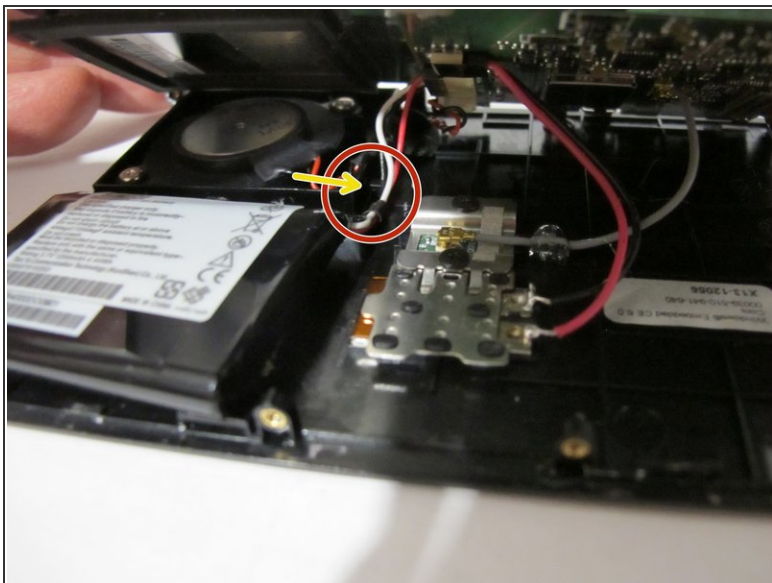
- Pull a plastic card between the wall and the side panel to separate them. After the sides also separate the upper edge.

## Step 6 — remove inner edge cover



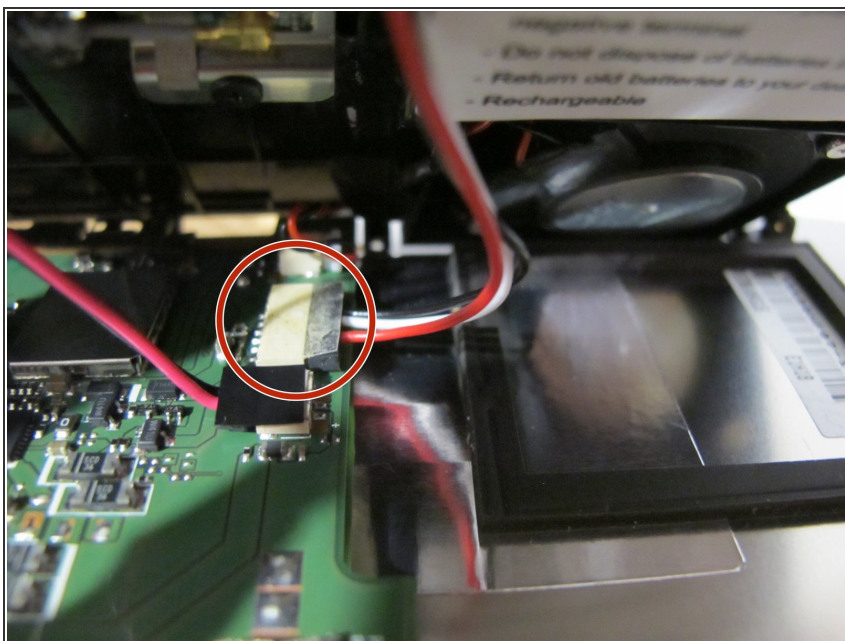
- Pull out the inner edge cover between the screen and the rear panel.

## Step 7 — Disconnect the battery cable



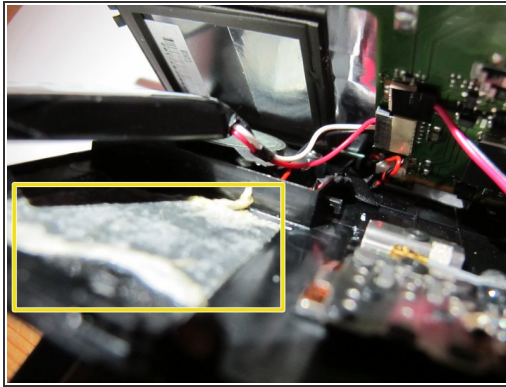
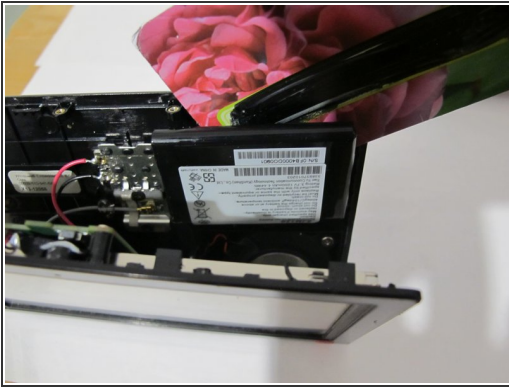
- Pull the battery cable downwards, then out from the guide nose.

## Step 8 — Disconnect the battery cable



- Remove the adhesive tape from the battery.
- Pull plug out of socket.

## Step 9



- ✦ The battery is glued to the housing with a very tough adhesive tape. "Carefully" pry out. (You can probably solve this with isopropyl alcohol - I read later).

## Step 10 — assembly



- Install new battery. Reassemble the unit in reverse order of disassembly steps.

## Step 11 — Outlook



- For me, the device worked well after the battery replacement. It was easy to turn on and off.
- Meanwhile, there was occasionally "freezing" the display while navigating, which could be remedied with a reboot. Maybe a hardware defect, which also affects the charging function. The new battery enough for about 2 hours navigation without charging cable too little, I think.
- Works permanently well. Also battery charge has gotten better. Maybe it was because the battery was too new.

Repeat the steps in reverse order to reassemble your device.