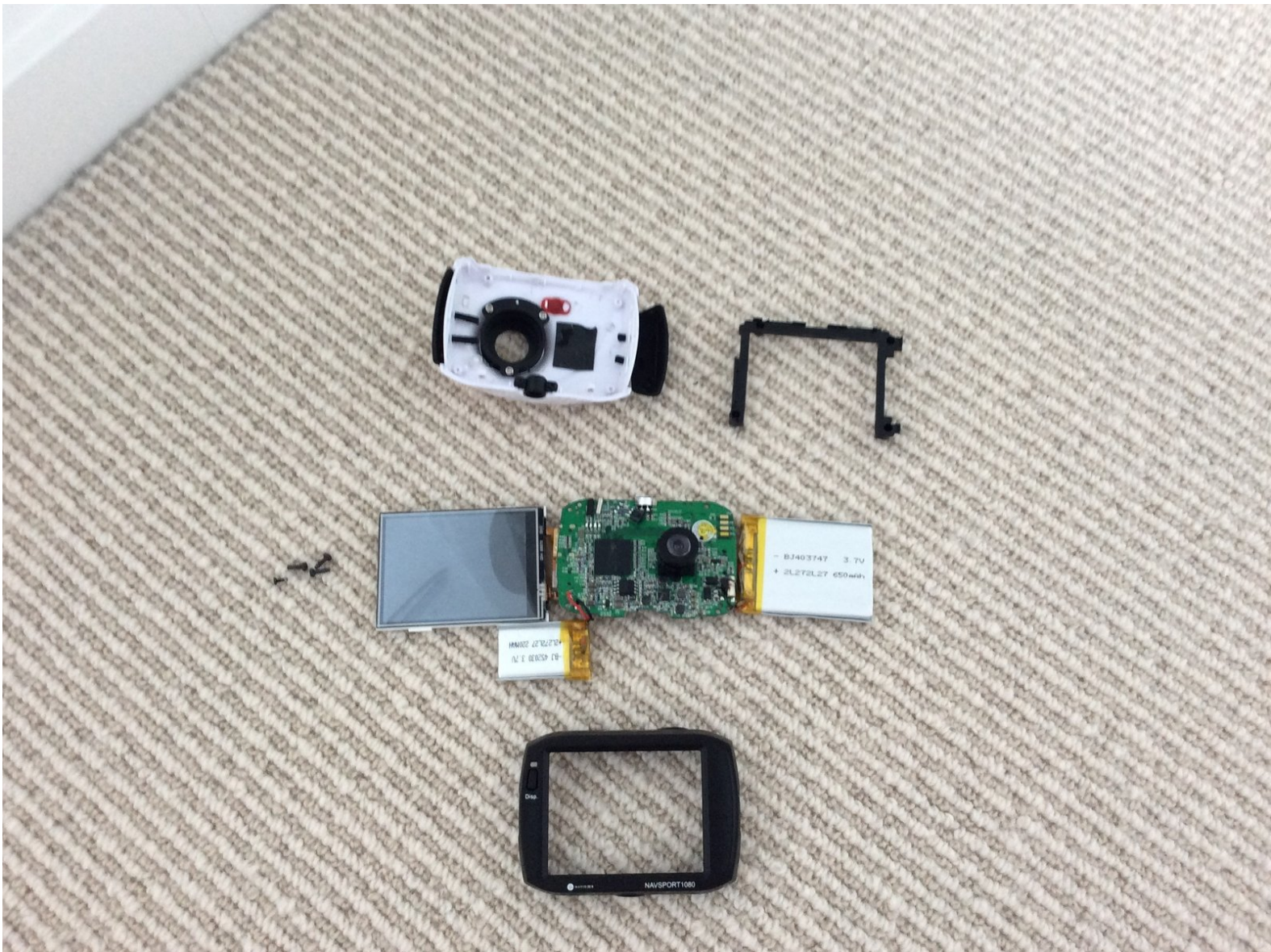




# Navig8r Navsport 1080p - Teardown

I will be showing you what is inside the Navig8r Navsport 1080p sportscam.

Written By: Zach luc



---

# INTRODUCTION

I will be showing you what is inside the Navig8r Navsport 1080p sportscam.



## TOOLS:


- [Essential Electronics Toolkit](#) (1)
-



## Step 1 — Finding the screws



- Peel off the sticker under the camera, it will reveal 2 Phillip - Headed screws.

 Peeling off the sticker below will void your warranty, please do this at your own risk.

## Step 2 — Taking off the outline



- Once done unscrewing them, carefully take off the black outline of the screen.

### Step 3 — Taking off the screen



- Once you have done that, slowly take off the screen, there will be 4 Phillip - Head screws.
- ❗ The top left screw is the hardest one to take off.

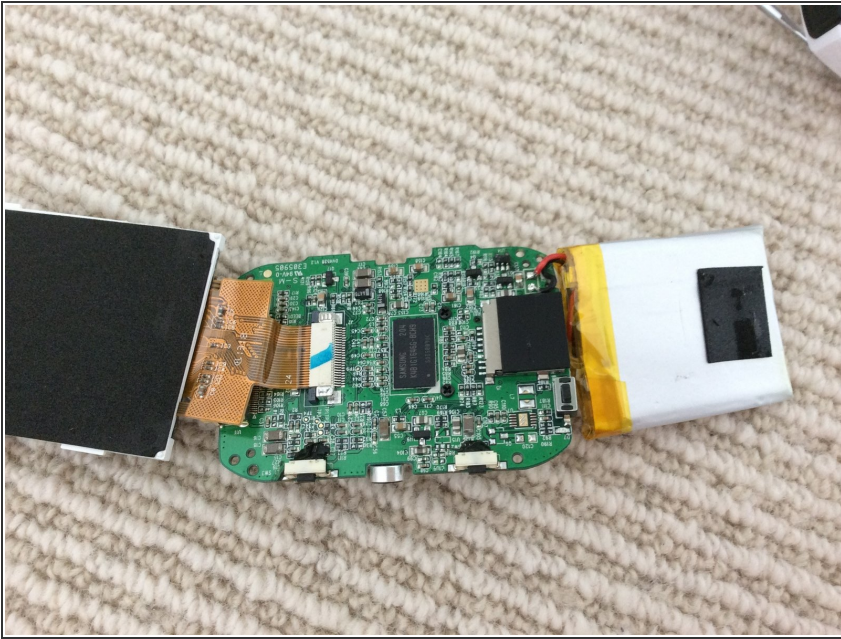
### Step 4 — Taking off the battery



- Once you've done that, take off that and you will see the motherboard.

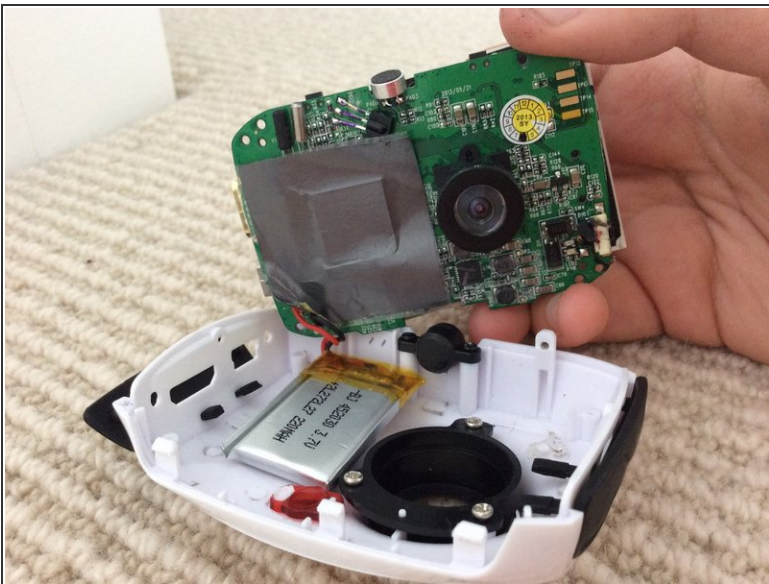


## Step 5 — Behind the Motherboard



- Take that black sticker off and we can now see the entire motherboard.

## Step 6 — Taking off the motherboard



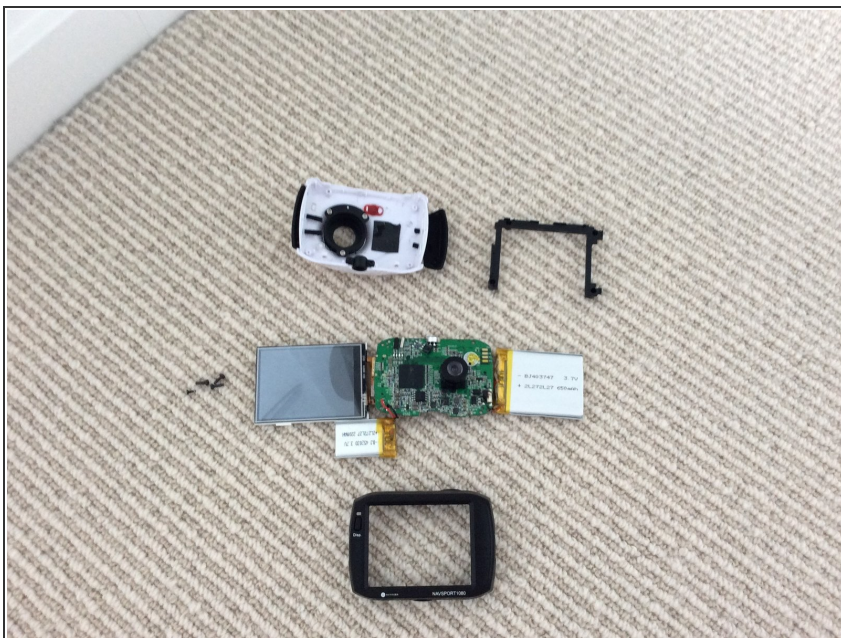
- Now we can take off the motherboard, revealing the front of the motherboard.
- There seems to be a second battery on the front of the motherboard, I do not know what it does nor is used for.

## Step 7 — Front of the Motherboard



- Here is the front of the Motherboard.

## Step 8 — Done



- ...and that sums up our teardown!