



# NeXTstation Teardown

Written By: Chris Green



## INTRODUCTION

NeXT Computer was founded in October of 1985 when Steve Jobs was forced out of Apple by John Scully. He started NeXT as a high-end computer company targeted at the University/Scientist/Computing Industry. NeXT only ever released , the NeXTStation, and The NeXTCube, in different variations. NeXT computers were high-end workstation computers, and only a few thousand were ever sold. The NeXTStation featured a, though the Turbo NeXTStation featured a68040. There were color and non-color variations of the NeXTStation. The world's first web server was created by Tim Berners-Lee, at CERN on a NeXTCube. NeXT computers were used to make games like Doom, and Wolfenstein. This is my&W NeXTStation. Mac OS X Is based off of NeXTStep, the NeXT OS.

---

### TOOLS:

- [Phillips #00 Screwdriver](#) (1)
-

## Step 1 — NeXTstation Teardown



- The NeXTStation, this is a great addition to any computer collection.

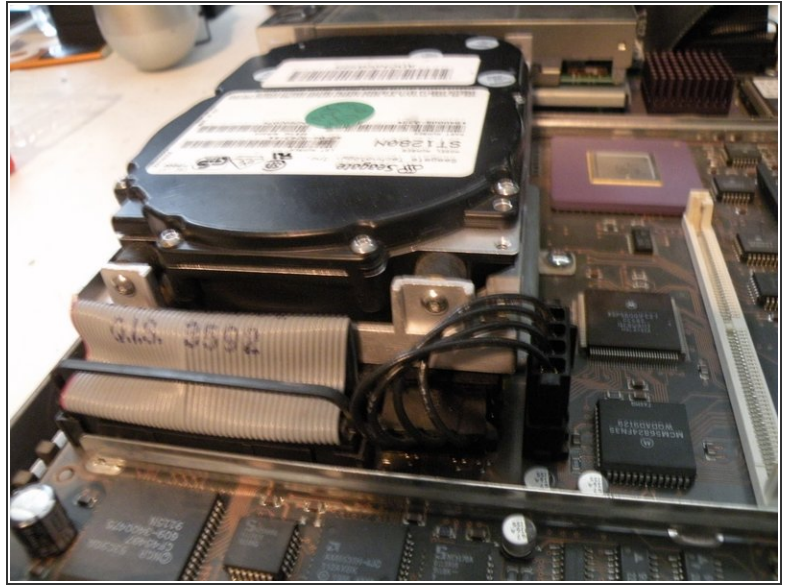
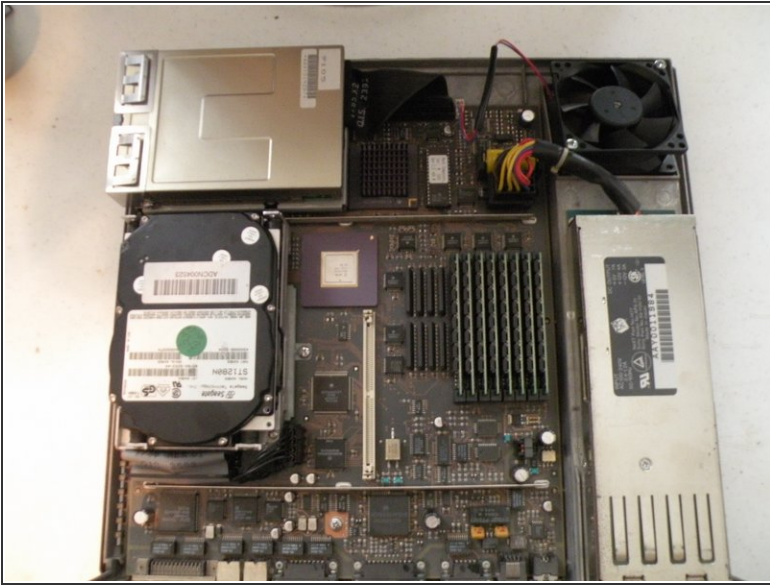
## Step 2



- Turn the NeXTStation around, and remove this screw:
- Then, lift the top cover of the computer. This will reveal the guts.
- The ports from left to right: SCSI2, Keyboard & Mouse, DSP Port, DB-19(MegaPixel Display), DB-9(Serial), RJ-45(Ethernet), Coaxial (10b2 Ethernet), Power
- I find notes in everything!

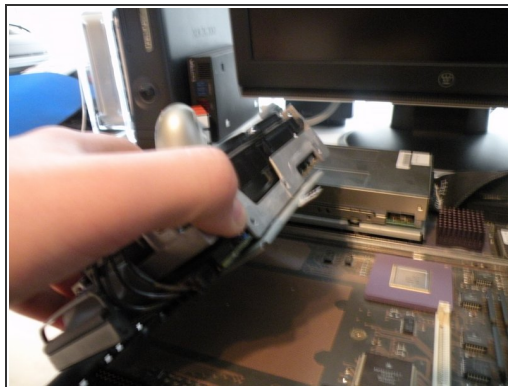


## Step 3



- Removing the hard drive:
- The NeXTStation uses a 50-Pin SCSI Hard Drive up to 4GB.
- Remove all of the cables from the logic board.

## Step 4



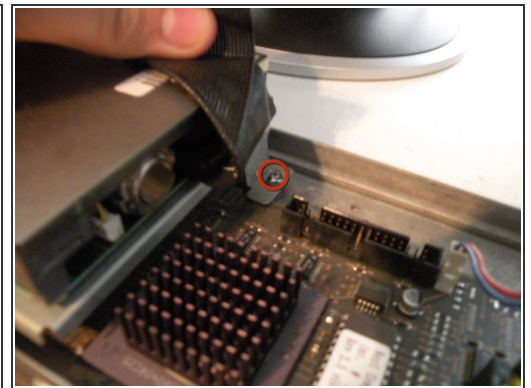
- Then remove this screw.
- Once the screw is removed, pivot the drive up on a 45 Degree angle, then slide it out.

## Step 5



- The Hard Drive & Caddy

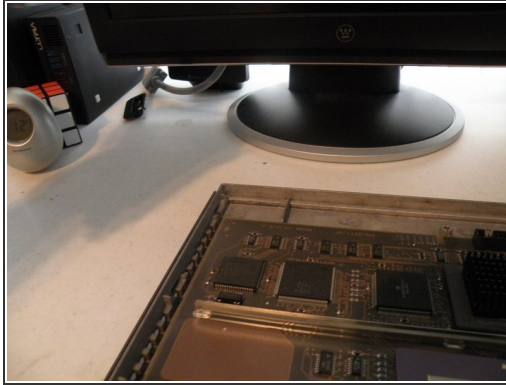
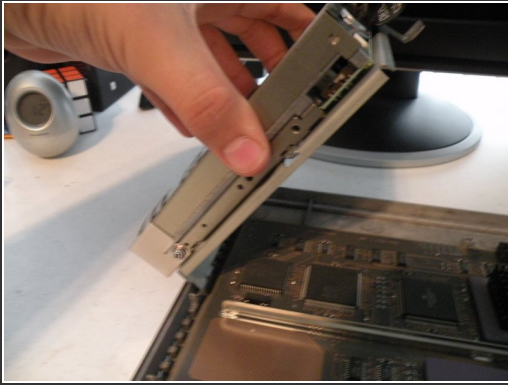
## Step 6



- Removing the floppy disk drive:
- The NeXTStation uses a non-standard 2.88MB 3.5" floppy drive, though it uses the standard floppy connector.
- Remove the floppy cable.
- Then, remove this screw.

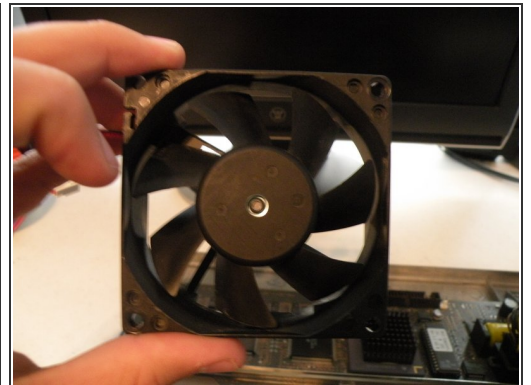
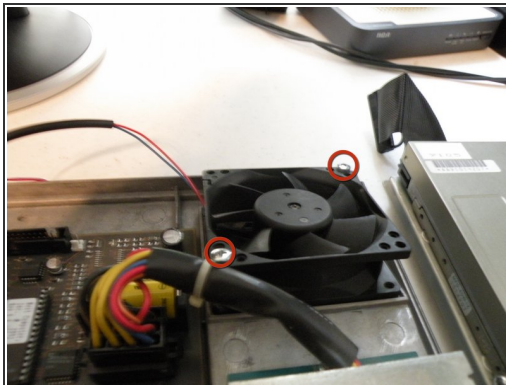
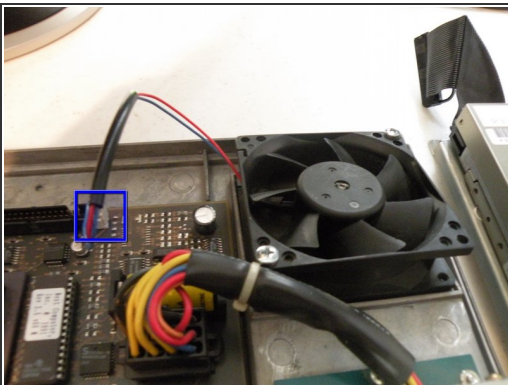


## Step 7



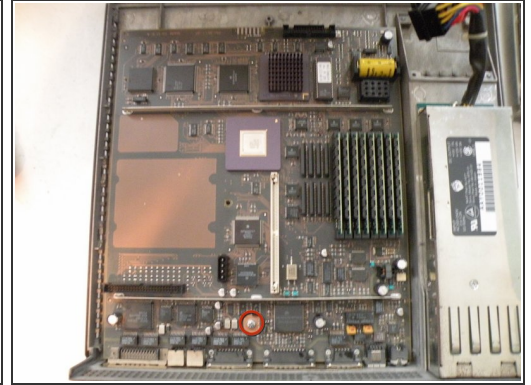
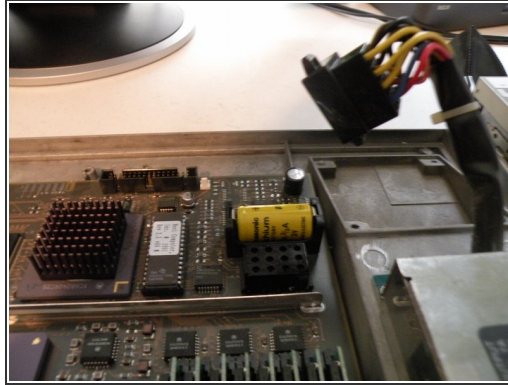
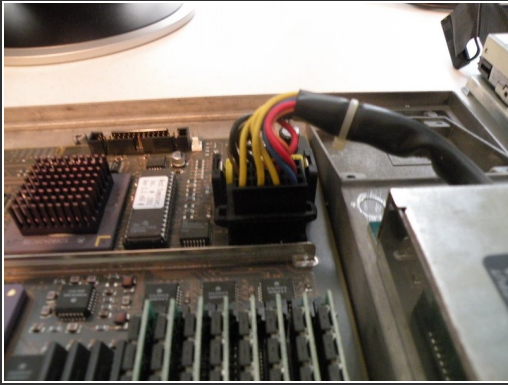
- Then, just like the hard drive, pivot the drive up 45 degrees, and pull it out.

## Step 8



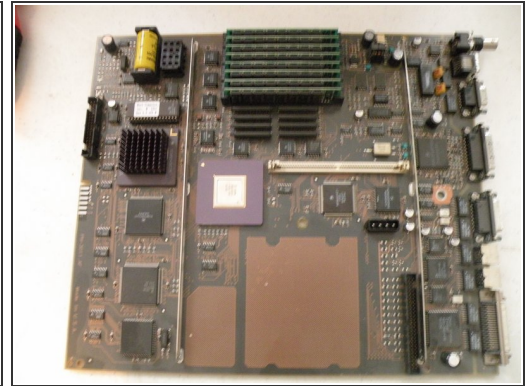
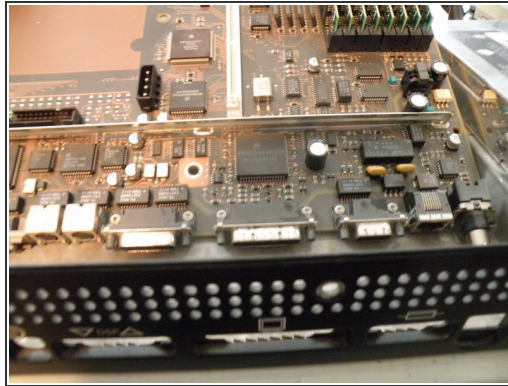
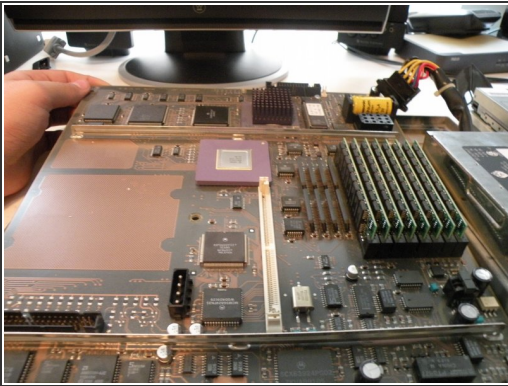
- Removing the fan:
- Remove this connector.
- Remove these screws.
- Remove the fan.

## Step 9



- Removing the logic board:
- Remove the power supply connector. Just lift it straight up, and it should come free.
- Remove this screw.

## Step 10



- Lift the end of the logic board(away from the ports), and slide it away from the ports.
- Now, set the board aside.

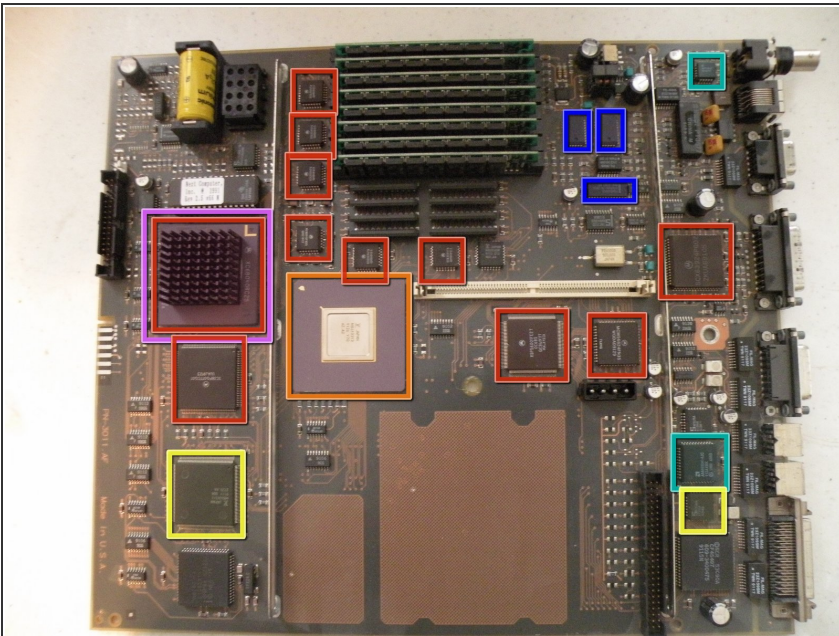


## Step 11



- Power Supply:
- Remove this screw.
- Lift the power supply up, and out.

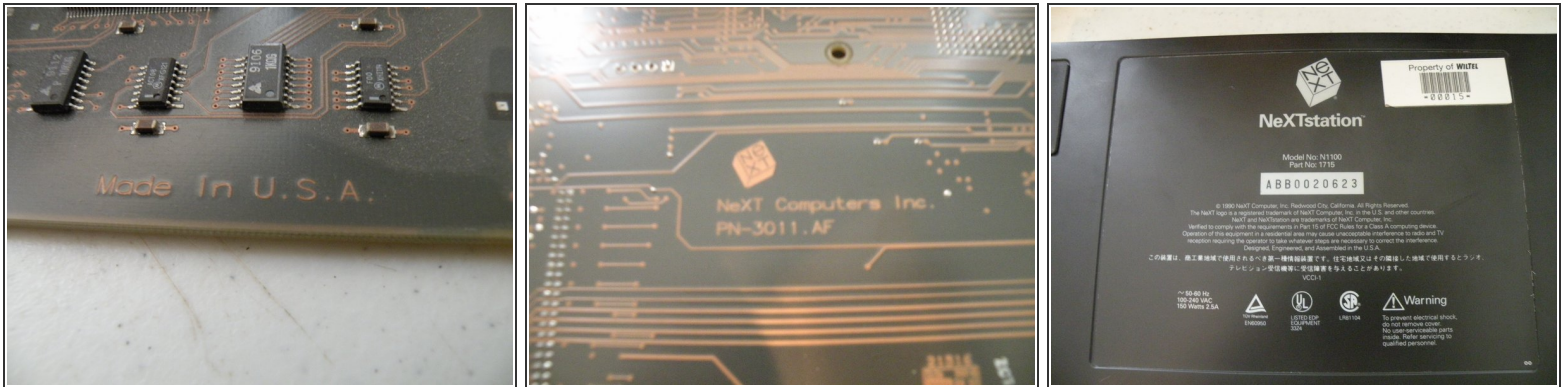
## Step 12



- The Logic Board Overview:
- The Board has a 25Mhz Motorola 68040 CPU, This board features a ton of chips for something made nearly 20 years ago.
- The CPU: Motorola XC68040RC25
- The Co-Processor: MB610313
- Motorola Chips
- Intel Chips
- AMD Chips (Intel and AMD In the same computer?)
- Fujitsu Chips



## Step 13



- Made in the USA, you don't see this anymore.
- The Serial #
- Looks like my NeXTStation came from WilTel.
- It is model # N1100

To reassemble your device, follow these instructions in reverse order.