



Neato Botvac 65 Top Cover Removal

This guide will show you how to remove the Neato Botvac 65 cover to gain access to the components of the robot.

Written By: Joseph Caton



INTRODUCTION

In order to gain access to the components of the robot the top cover needs to be removed.



TOOLS:

- [Phillips #1 Screwdriver](#) (1)
 - [T10 Torx Screwdriver](#) (1)
-

Step 1 — Battery



- Flip the device upside down.
- Locate the two (2) 20mm screws on the battery plate.

Step 2



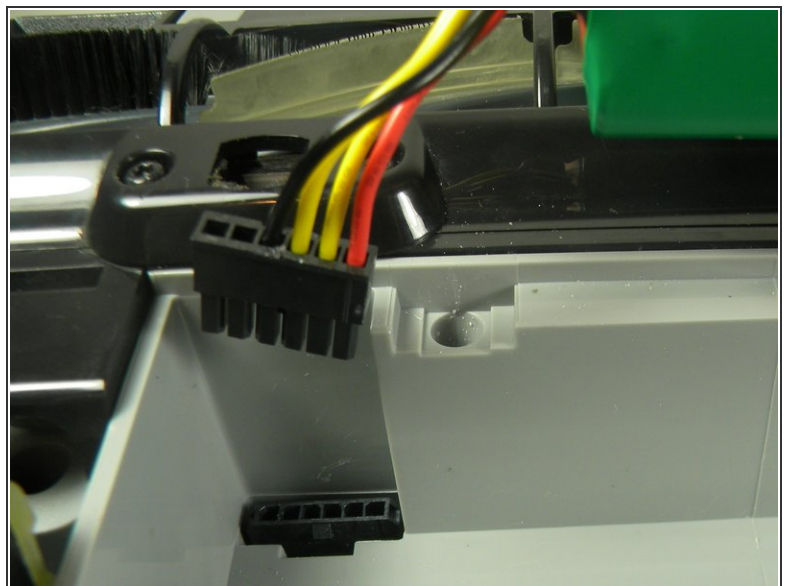
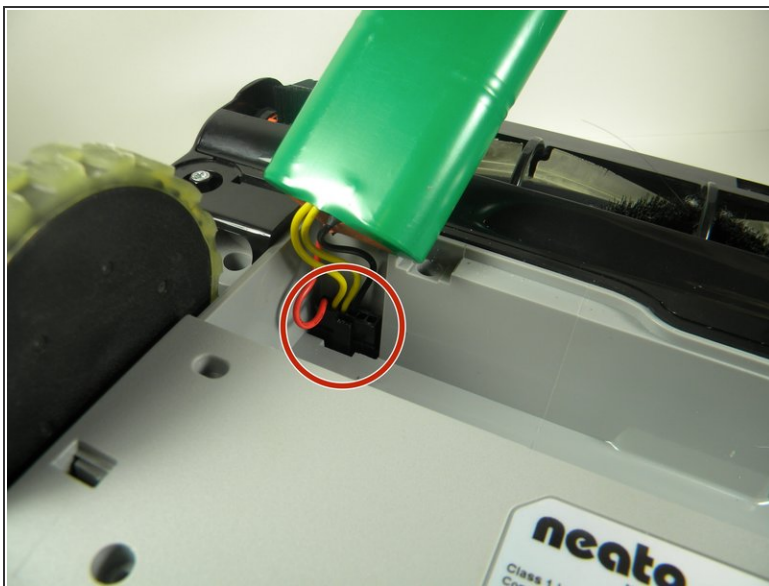
- Use the Phillips #1 screwdriver to loosen both screws.

Step 3



- Remove the battery back plate to reveal the battery.

Step 4



- Disconnect the current battery by pulling the connector from the base and pushing on the clip.

Step 5 — Brush



- Flip the device upside down.

Step 6



- Use the screwdriver to take off the four (4) 10mm screws located near the brush which secure the plastic guard.

Step 7



- Remove the plastic brush guard.
- Pull off the plastic covering the brush.

Step 8



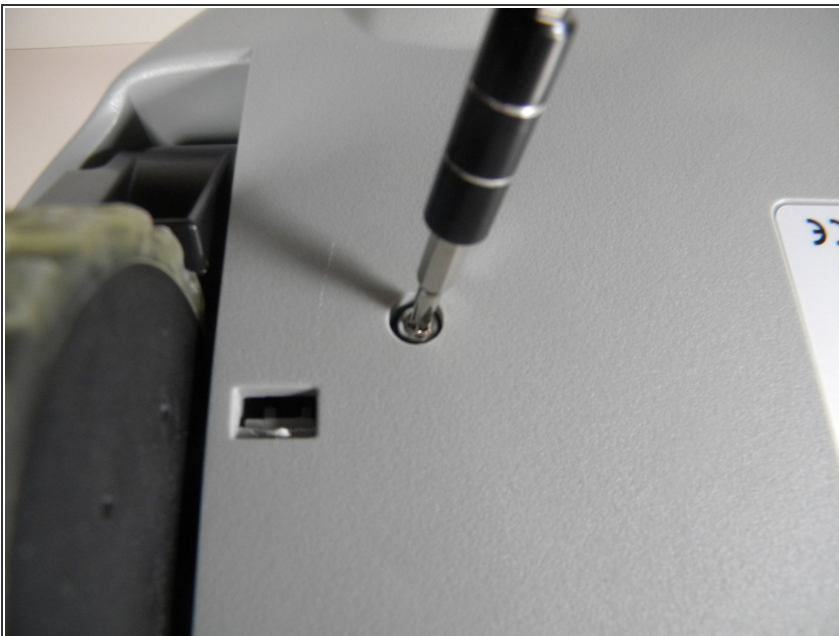
- Lift the brush to clean or replace.

Step 9 — Top Cover



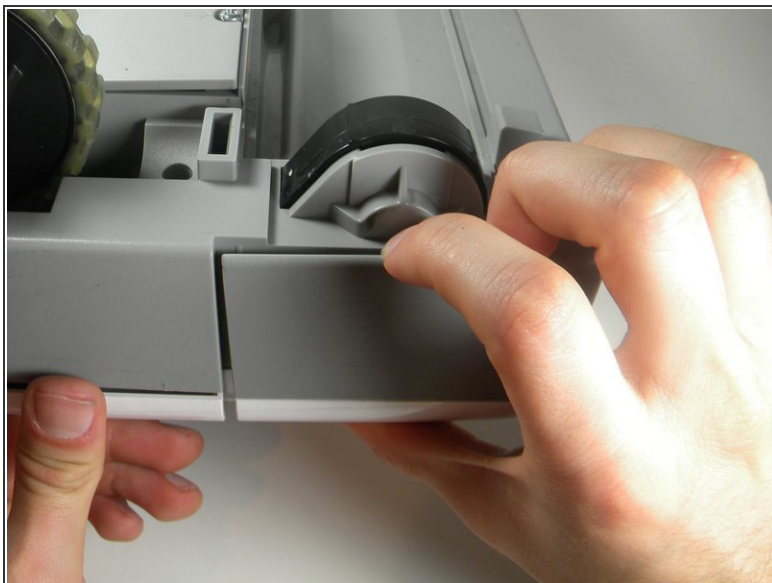
- Flip device upside down.
- Locate the six (6) screw connected to the top cover.

Step 10



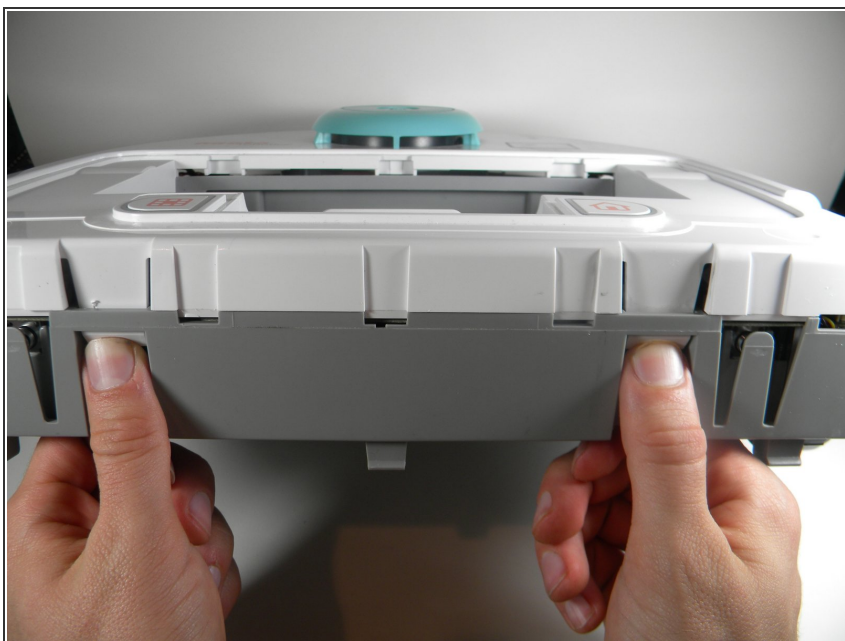
- Remove eight (8) star screws using the T10 bit.

Step 11



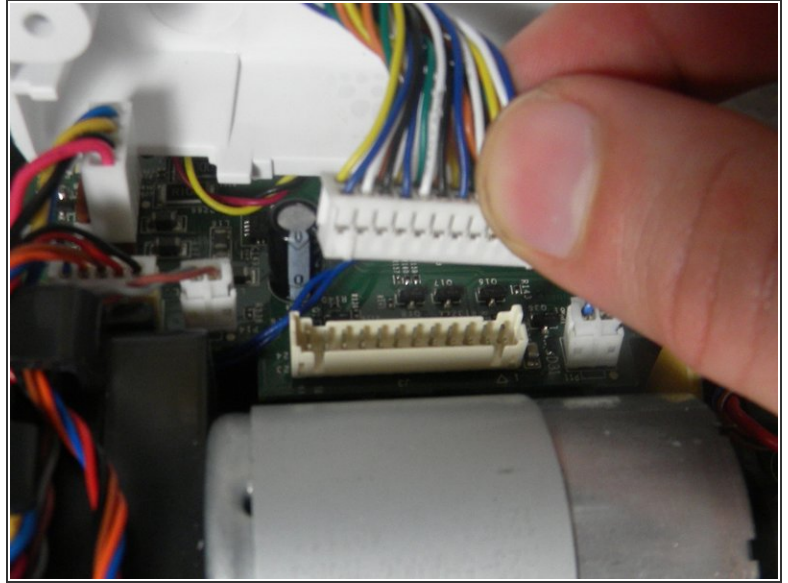
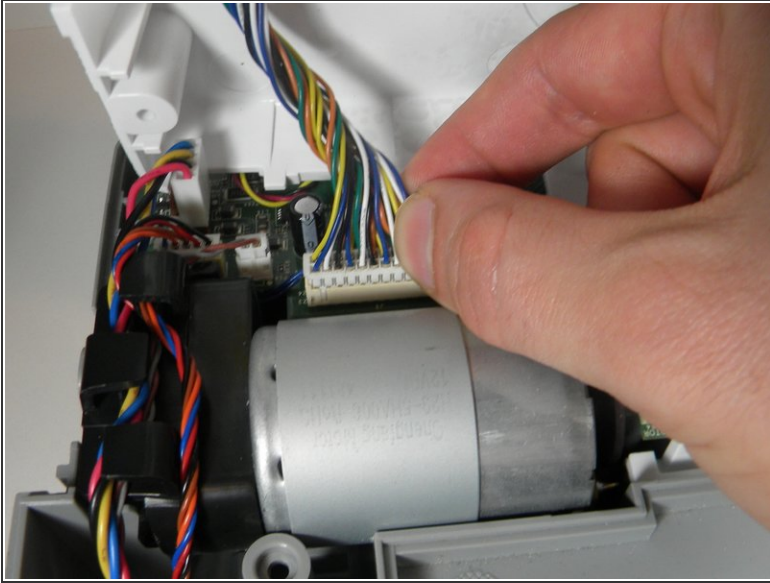
- Pull off one side of the brush front cover, and then pull off the other.

Step 12



- Flip right side up and turn around.
- Find the two clips connecting the top cover to the body of the device.

Step 13



- Lift up on the top cover gently.
- Disconnect the connector from the motherboard to detach the top cover from the robot.

To reassemble your device, follow these instructions in reverse order.