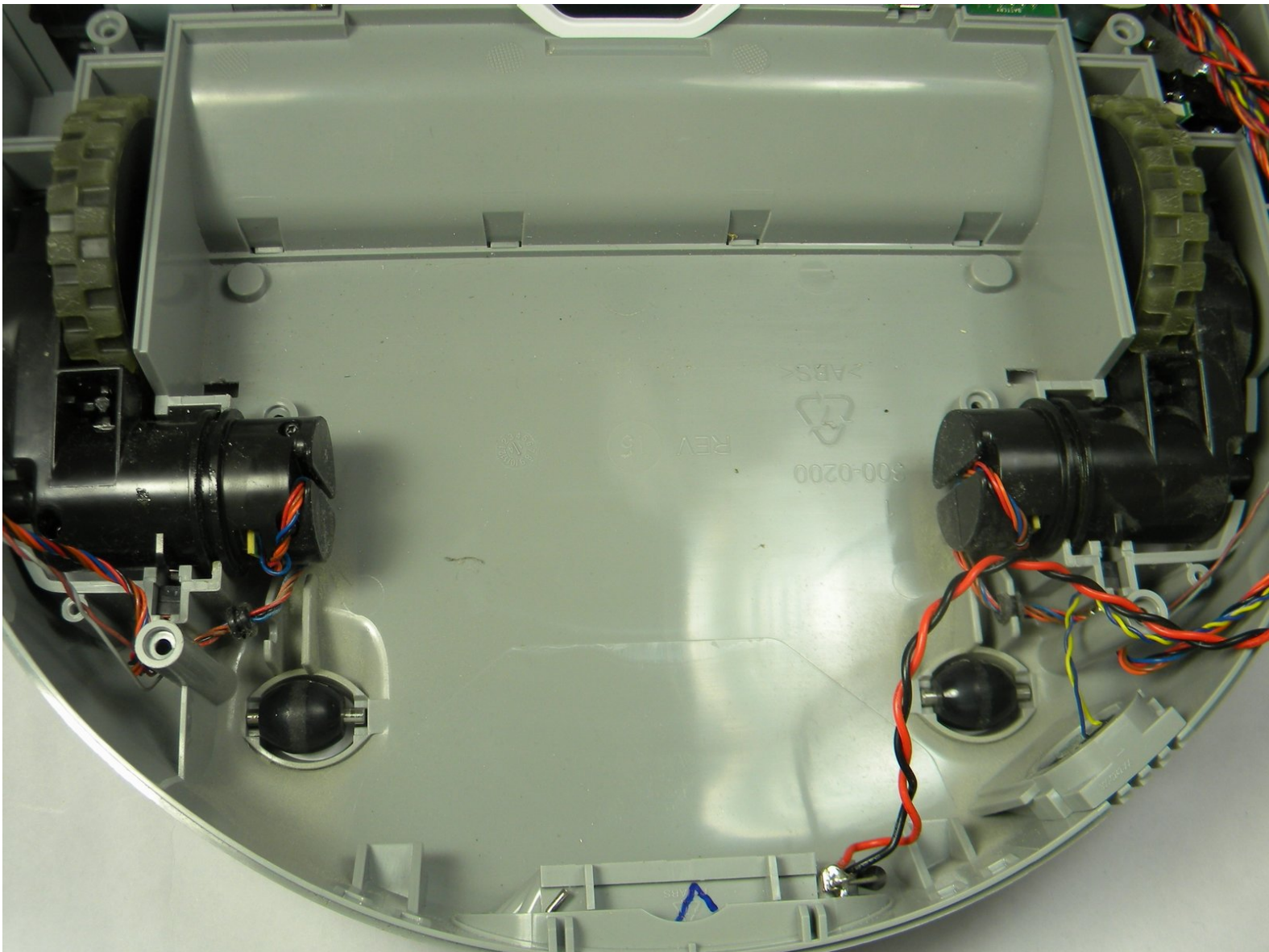




# Neato Botvac 65 Wheel Motors Replacement

This guide will show you how to replace the left and right wheel and motor assembly on the Neato Botvac 65.

Written By: Joseph Caton



# INTRODUCTION

Step by Step instructions to replace Neato Botvac 65 wheel motors.



## TOOLS:

- [T10 Torx Screwdriver](#) (1)
- [Flathead 3/32" or 2.5 mm Screwdriver](#) (1)
- [Soft Cloth](#) (1)



## PARTS:

- [neato botvac 65 wheel motor](#) (1)

## Step 1 — Battery



- Flip the device upside down.
- Locate the two (2) 20mm screws on the battery plate.

## Step 2



- Use the Phillips #1 screwdriver to loosen both screws.

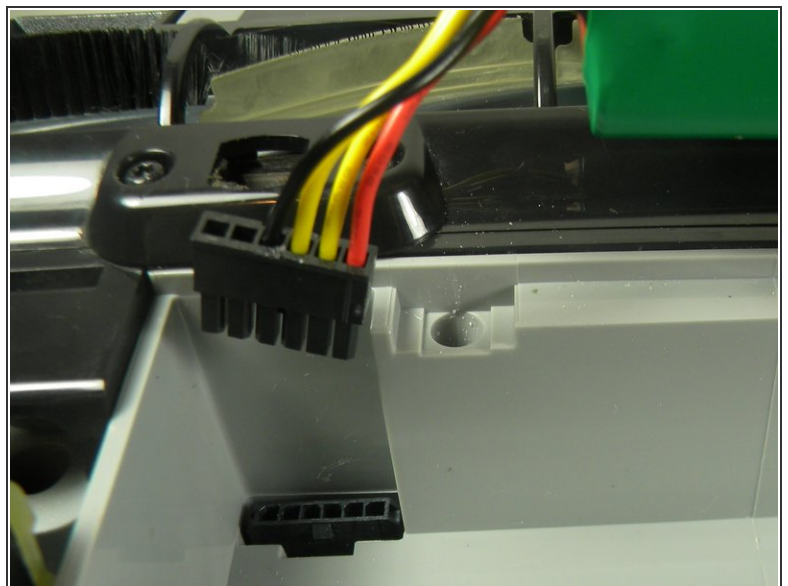
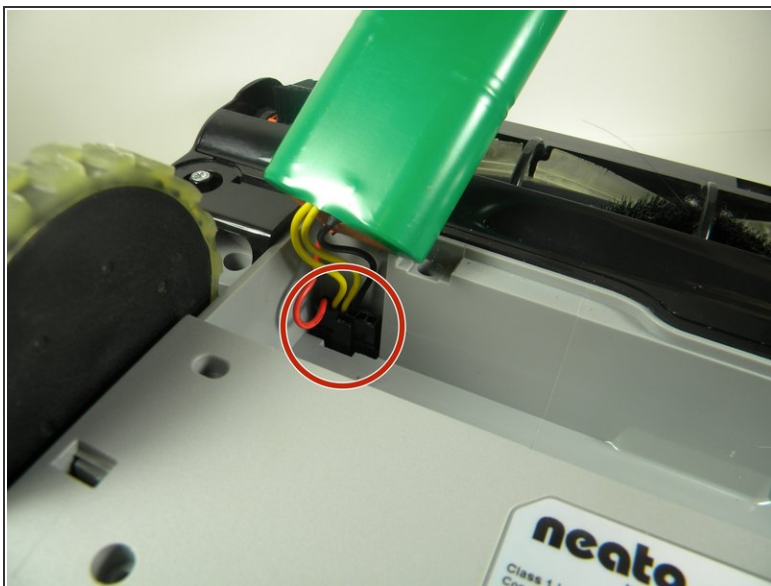


## Step 3



- Remove the battery back plate to reveal the battery.

## Step 4



- Disconnect the current battery by pulling the connector from the base and pushing on the clip.

## Step 5 — Brush



- Flip the device upside down.

## Step 6



- Use the screwdriver to take off the four (4) 10mm screws located near the brush which secure the plastic guard.



## Step 7



- Remove the plastic brush guard.
- Pull off the plastic covering the brush.

## Step 8



- Lift the brush to clean or replace.

## Step 9 — Top Cover



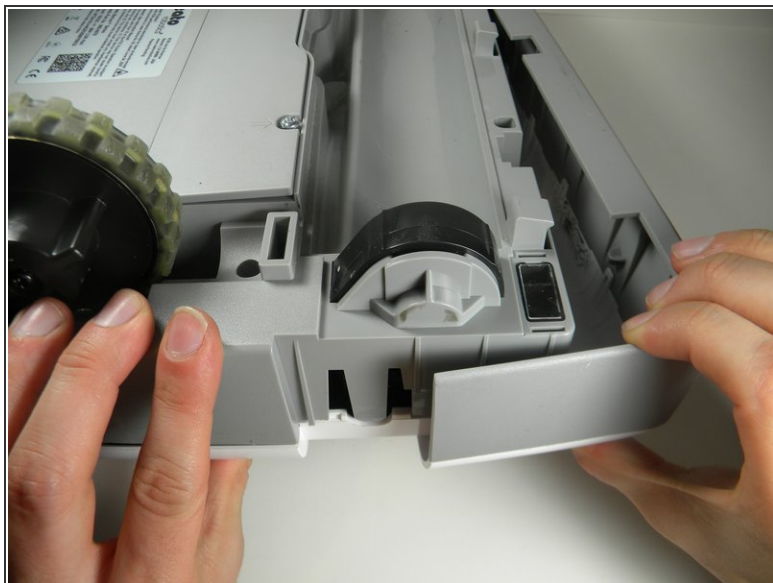
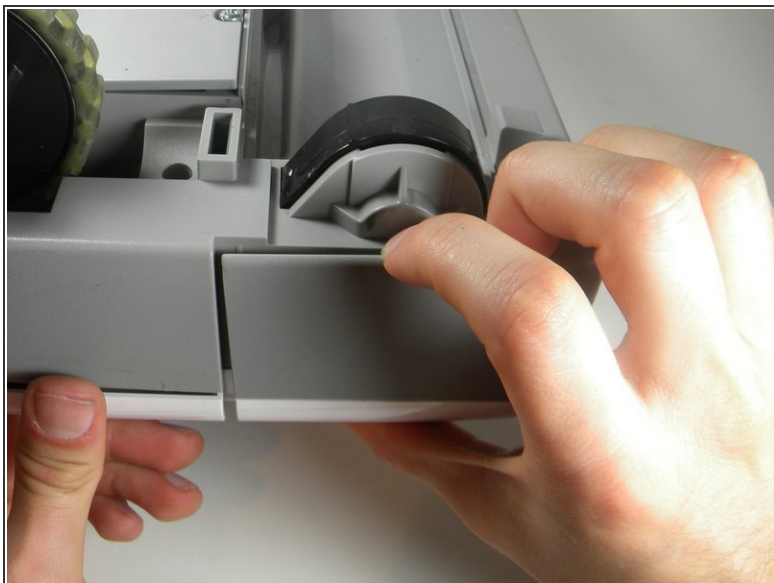
- Flip device upside down.
- Locate the six (6) screw connected to the top cover.

## Step 10



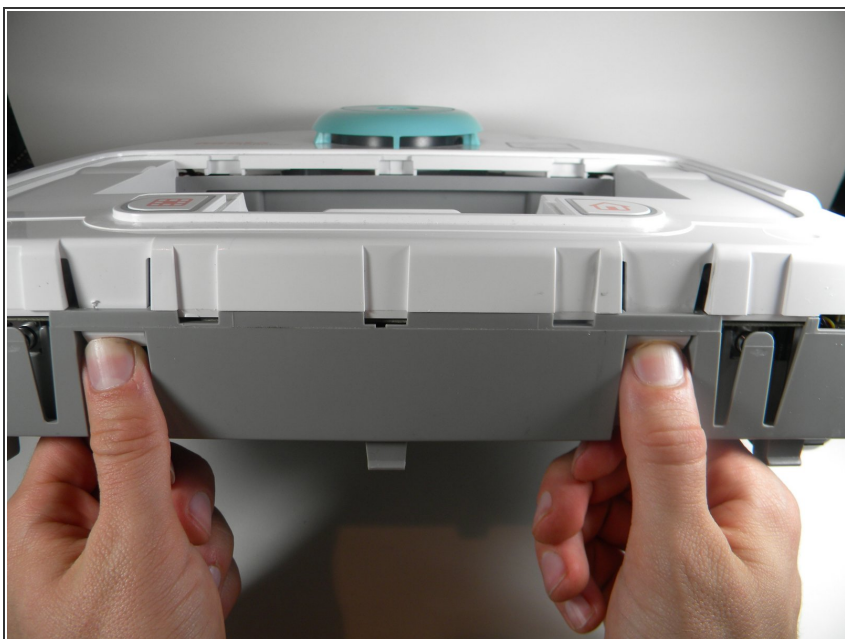
- Remove eight (8) star screws using the T10 bit.

## Step 11



- Pull off one side of the brush front cover, and then pull off the other.

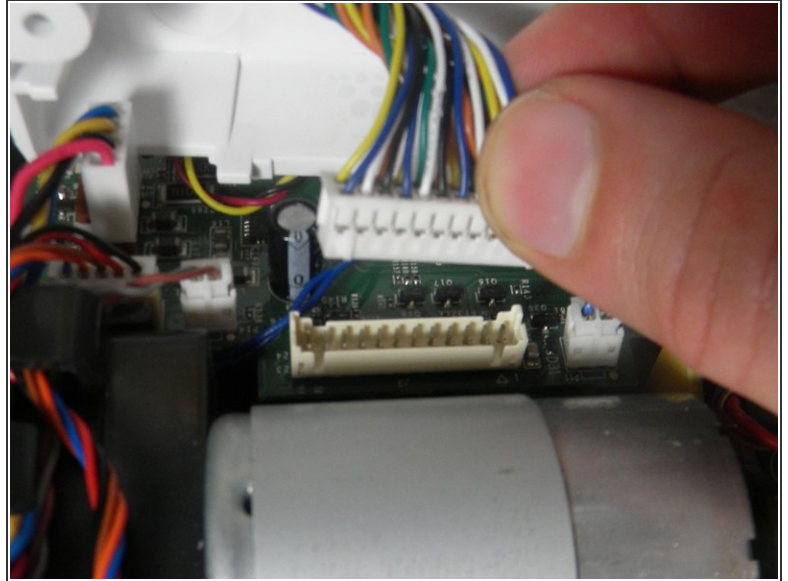
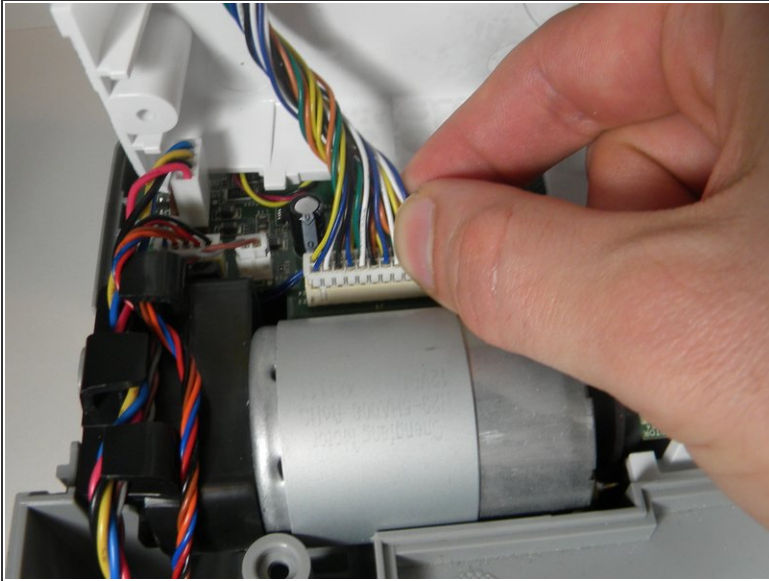
## Step 12



- Flip right side up and turn around.
- Find the two clips connecting the top cover to the body of the device.

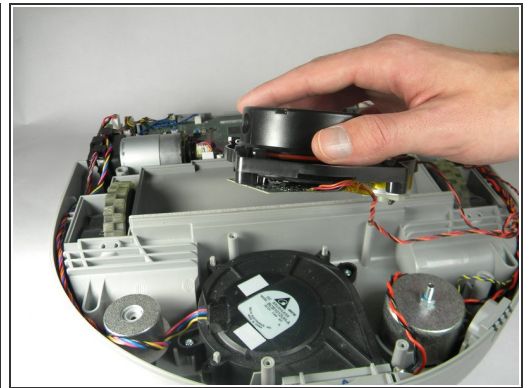


## Step 13



- Lift up on the top cover gently.
- Disconnect the connector from the motherboard to detach the top cover from the robot.

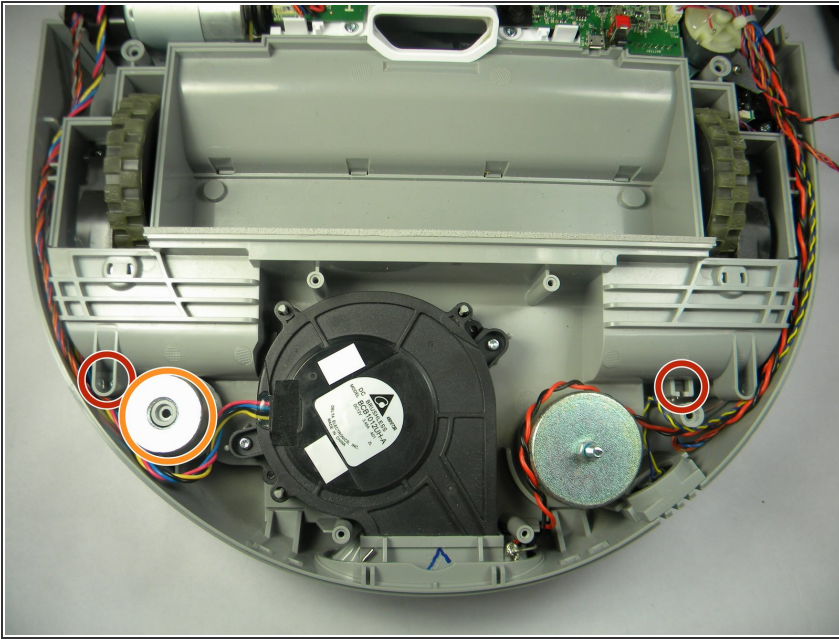
## Step 14 — Wheel Motors



- Remove four (4) 10mm 'star' screws using the T10 bit from the base plate where the rotating infrared sensor is located.

 Carefully place the sensor on or near the robot without pulling the wires out.

## Step 15



- Remove two (2) screws using the T10 bit that connects the plastic protector over the wheel motor.
- Pull up on the metal weight to remove.

## Step 16

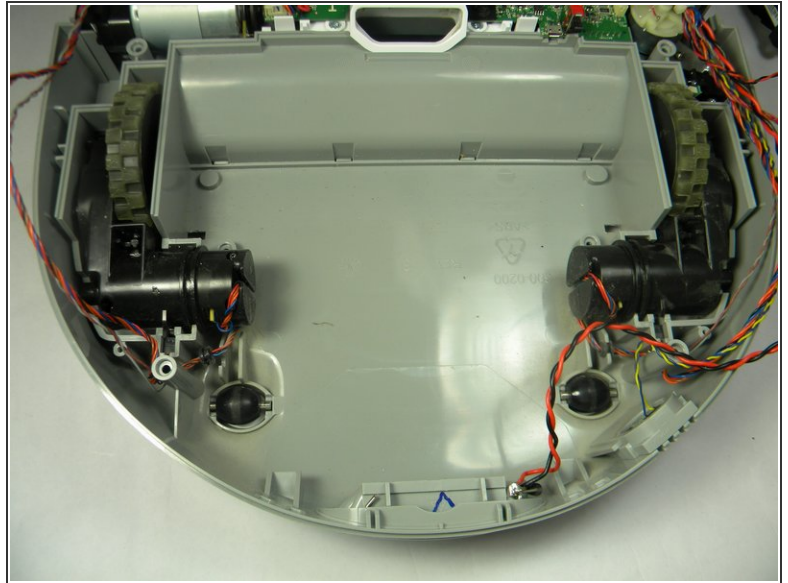


⚠ Flip the botvac over being careful not to drop the IR sensor or cause damage to the wires.

- Using a flat-head screw driver and a cloth for protection, press on the clips until they recede into the botvac.

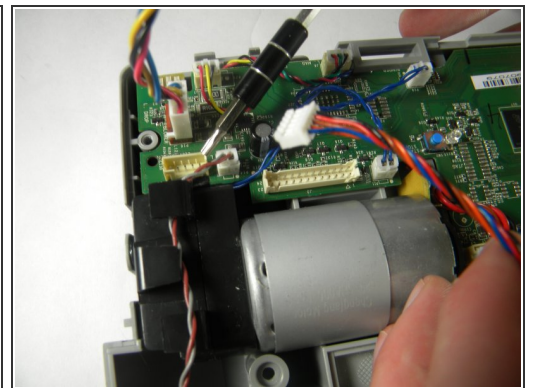
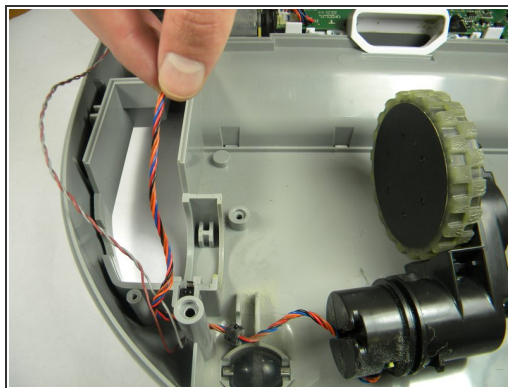
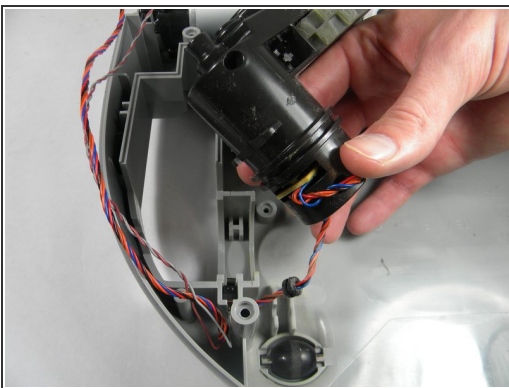


## Step 17



- Flip the robot back over(right-side up).
- Carefully remove the plastic cover that protects the motor.

## Step 18



- Carefully remove the motor that you wish to replace.
- Trace the wires that are connected to the motor back to the motherboard.
- Disconnect the connector from the motherboard for the respective motor you're replacing.

To reassemble your device, follow these instructions in reverse order.

This document was generated on 2019-10-05 09:06:35 PM (MST).



