



Neato Botvac 80 Laser Replacement

Written By: Brandon Blank



INTRODUCTION

This guide will show you how to replace a faulty laser.



TOOLS:

- [Phillips #00 Screwdriver](#) (1)
 - [T10 Torx Screwdriver](#) (1)
-

Step 1 — Rear Bumper



- Grab the rear bumper with both hands on either side.

Step 2



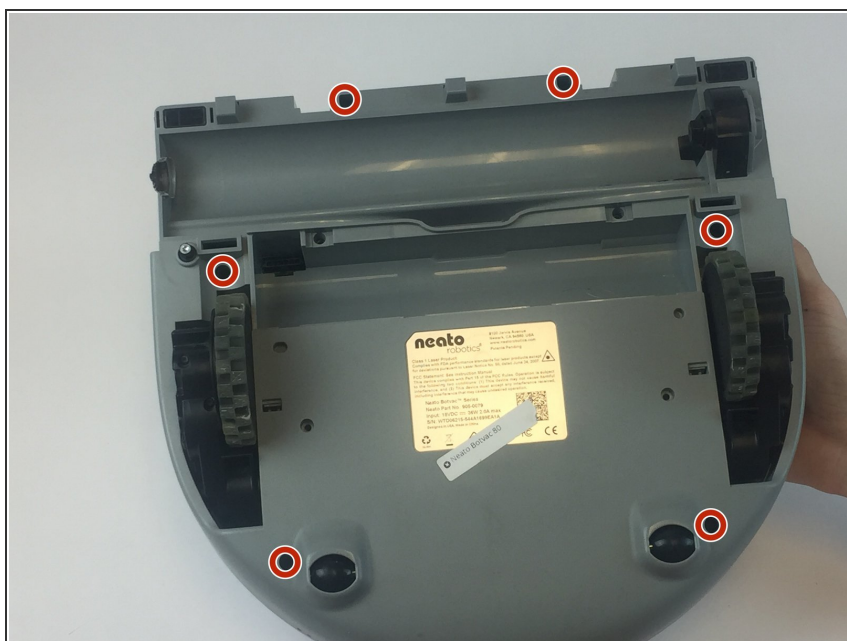
- Pull the left and right sides away from the machine to unclip the bumper. This requires that you bend the plastic a little bit. Unclip one side a little bit and allow the prong to rest on the side of the machine. Then unclip the other side and pull off the bumper parallel to both sides

Step 3 — Top Face Panel



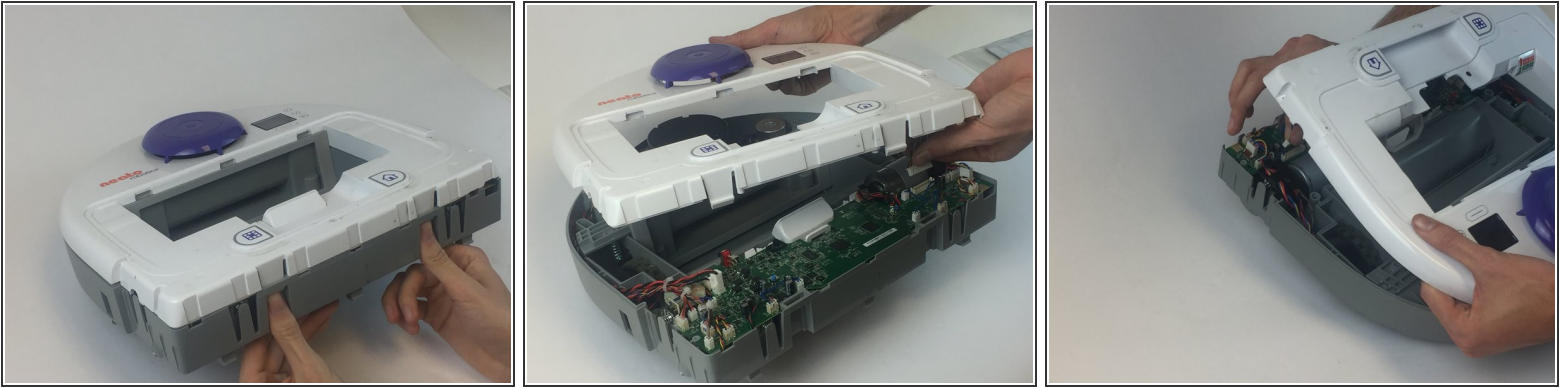
- Looking from above, remove the two 11mm screws with a torx T10 screwdriver.

Step 4




- Begin by placing the robot on it's back and removing the six 11m screws using a Torx T10 screwdriver.

Step 5



- To remove the top, you must press in both of the clamps at the same time and push upwards.

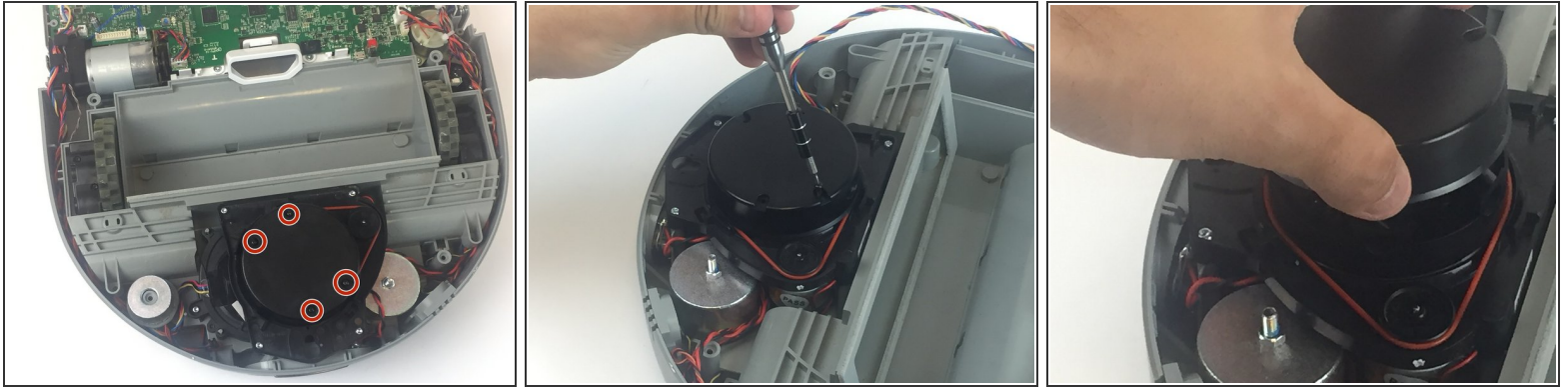
 When removing the top, before you can completely take it off you must unplug the LCD power cable from the motherboard.

Step 6 — Laser



- Lift gently upon the top panel.
- Unplug the clip located on the right side before completely removing.

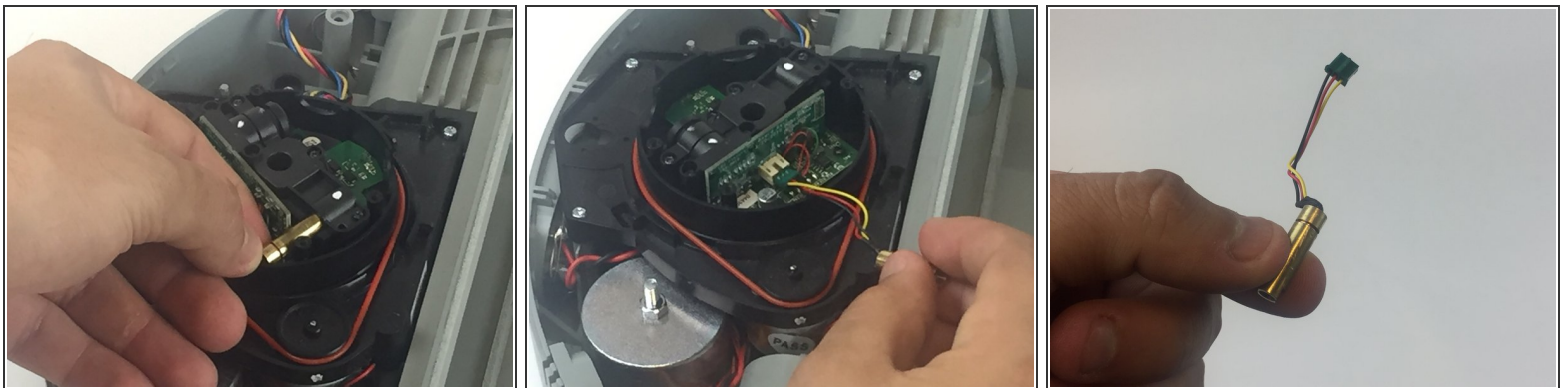
Step 7



i This black cap spins so may need a hand when unscrewing the screws.

- Locate and unscrew the four 12 mm screws located in the black cap with the phillips #00 screwdriver.
- Lift the black cap to reveal the laser.

Step 8



i There are two loosely secured black blinders on both the laser and sensor.

- Gently pull back on the gold laser to remove it from the socket.
- Unplug the mini LCU clip by gently pulling up and remove the laser.

To reassemble your device, follow these instructions in reverse order.