



Neato Botvac D8000 Battery Replacement

This guide will show you how to remove or replace the battery from the Neato Botvac D8000.

Written By: Michelle Sanchez



INTRODUCTION

Follow these steps to remove or replace a dead battery from your Neato Botvac D8000.



TOOLS:

- [Phillips #1 Screwdriver](#) (1)
 - [Flathead Screwdriver](#) (1)
-

Step 1 — Battery



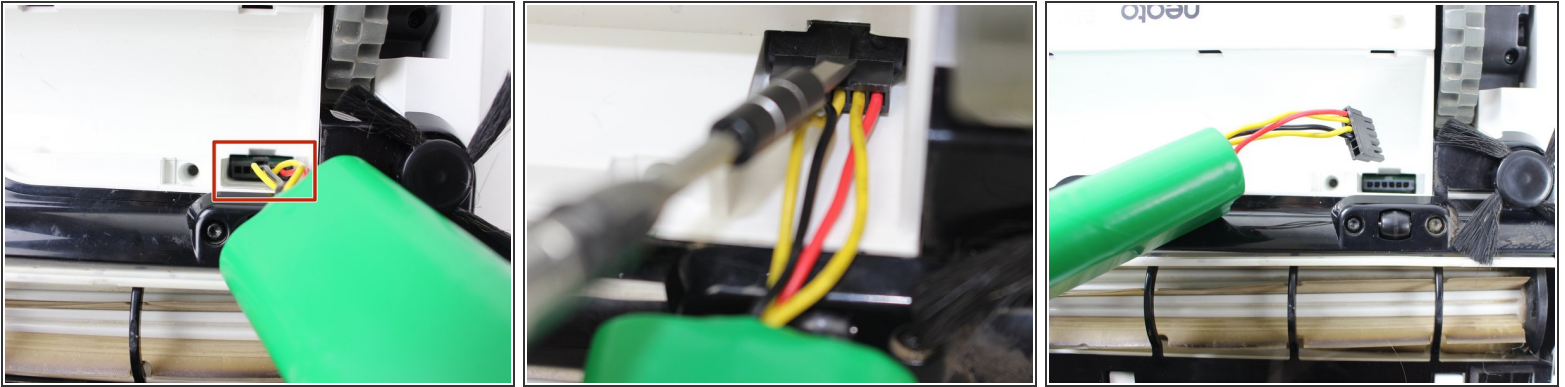
- Turn the robot upside down to locate the battery cover.

Step 2



- Use a Phillips #1 screwdriver to unscrew both of the 20mm screws.
- Gently lift the battery cover.
- Remove the battery cover to reveal the battery.

Step 3



- Use a flathead screwdriver to push down on the latch of the battery clip.
 - Simultaneously, pull on the battery while pushing down on the latch to detach the battery from the clip.
- ⚠ Do not pull on the wires that are connected to the battery.

To reassemble your device, follow these instructions in reverse order.