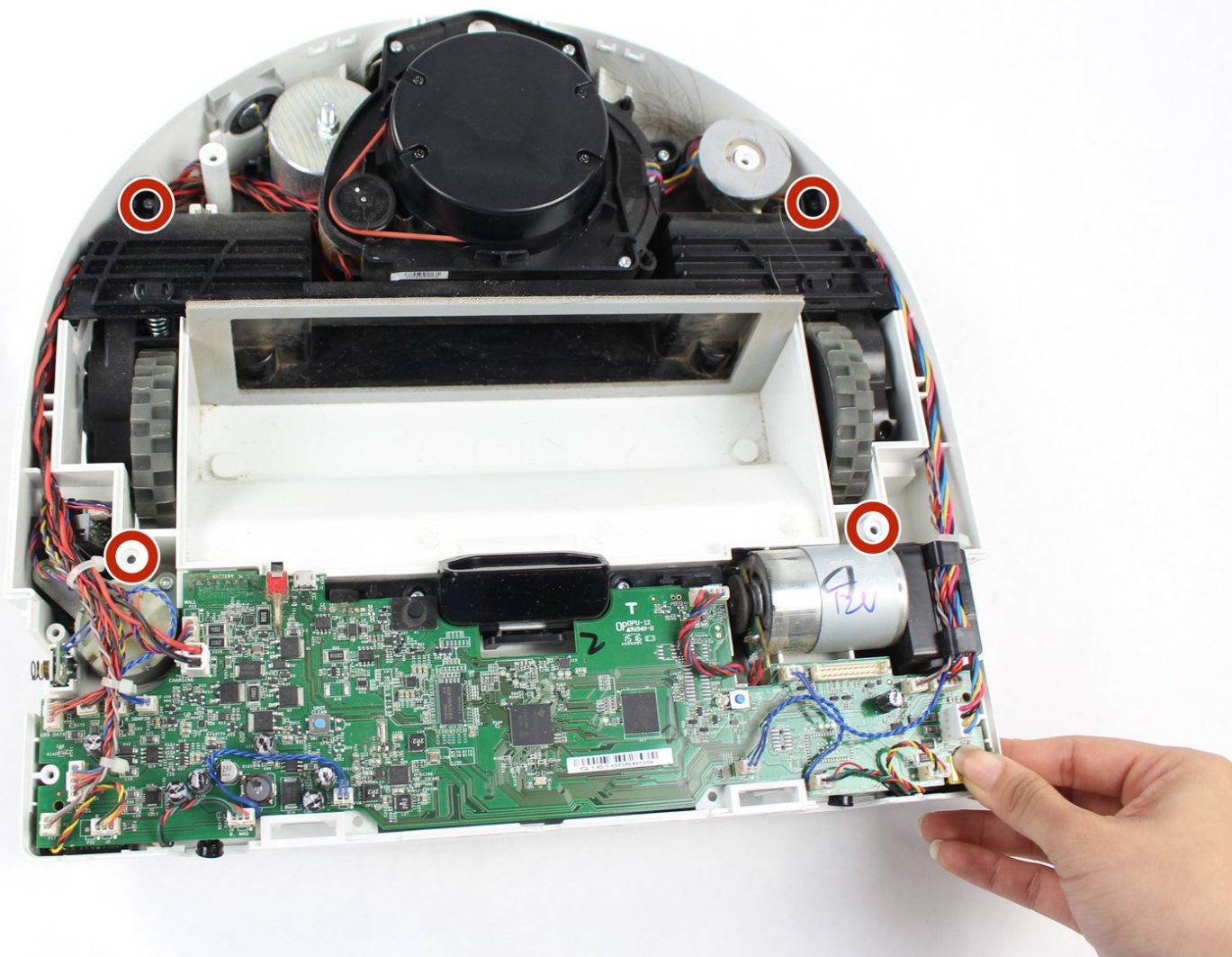




# Neato Botvac D8000 Wheel Replacement

This is a step by step guide on how to replace the wheel

Written By: Ruth Lopez



---

# INTRODUCTION

This guide will allow the user to entirely remove the wheel from the device.

---



## TOOLS:

- [Phillips #1 Screwdriver](#) (1)
  - [T10 Torx Screwdriver](#) (1)
  - [T15 Torx Screwdriver](#) (1)
-

## Step 1 — Brushes



- Place the vacuum on its back so the brushes are visible.

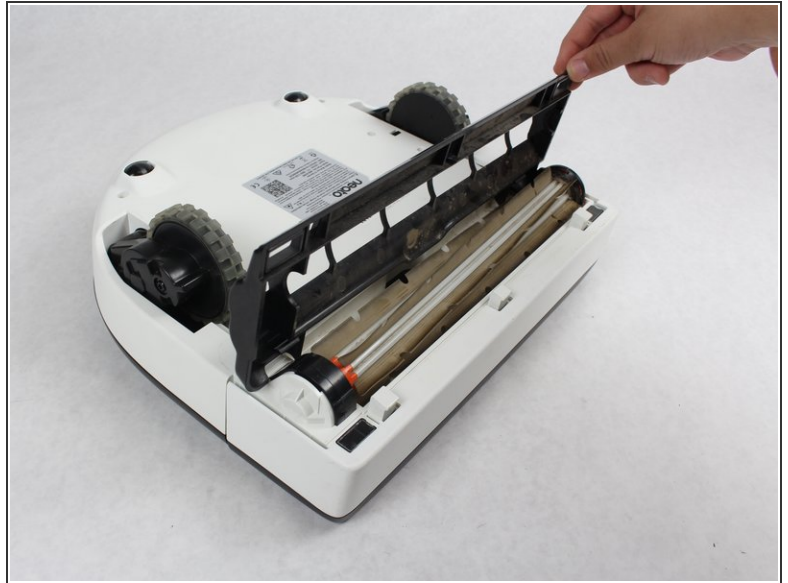
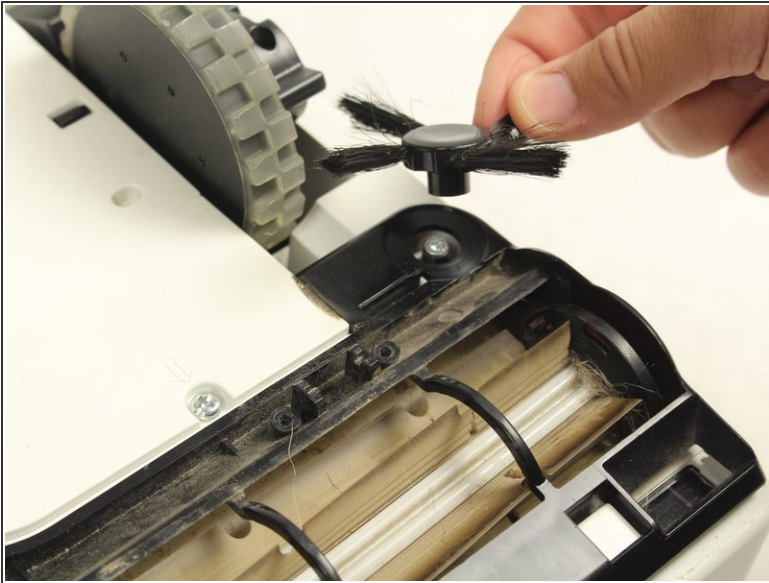
## Step 2



- Remove the four 10 mm screws with a Torx T10 screwdriver.

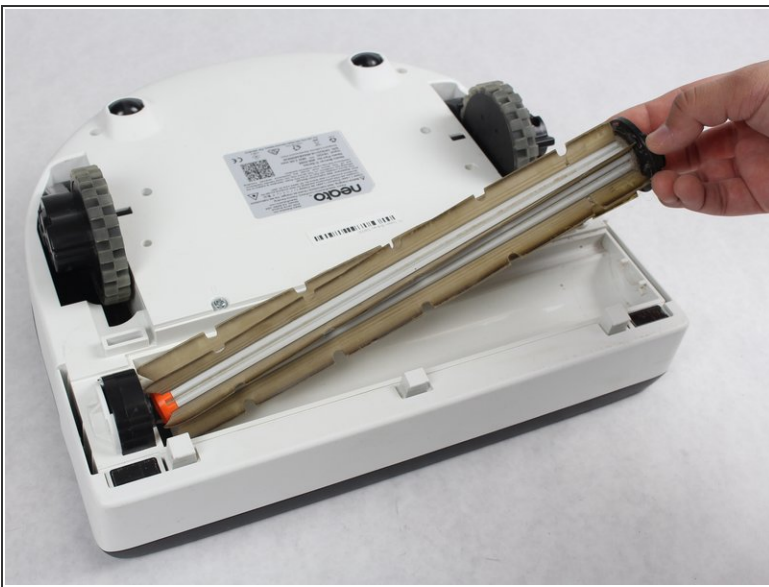


### Step 3



- Remove the rotary brush simply by grabbing it firmly and pulling it off.
- Once you have removed your rotary brush and 4 bolts, you can easily remove the brush guard.

### Step 4



- Remove the brush by simply pulling it out.
- From there you can clean it or replace the brush with a new one.

## Step 5 — Top Face Panel




- Grab the rear bumper with both hands on either side.

## Step 6



- Firmly pull the bumper forward at a steady pace.

 When pulling the bumper forward avoid being too rough because the bumper might break.

## Step 7



- Looking from above, remove the two 11mm screws with a Torx T10 screwdriver.

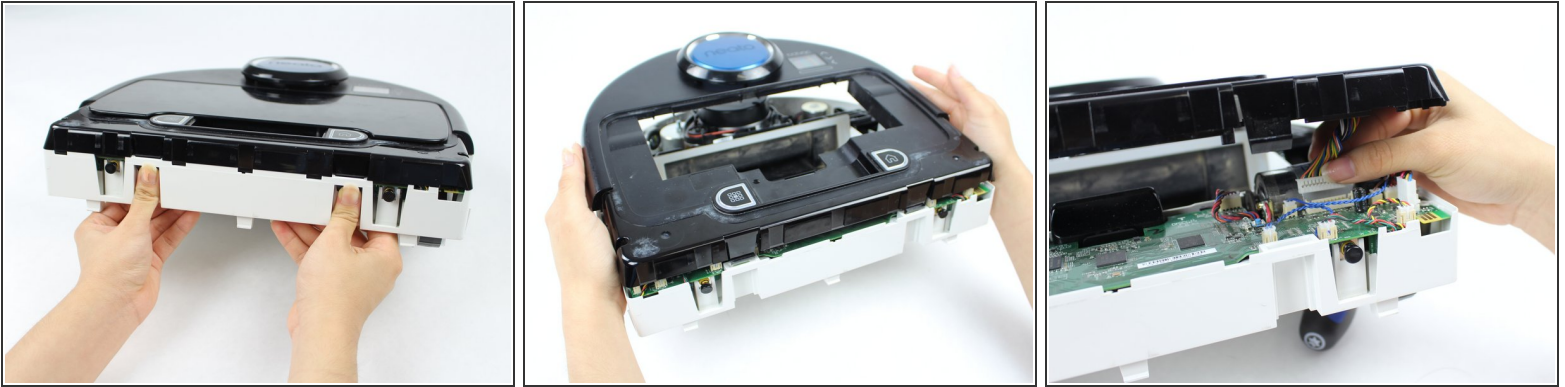
## Step 8




- Place the robot on its back and remove the six 11mm screws using a Torx T10 screwdriver.



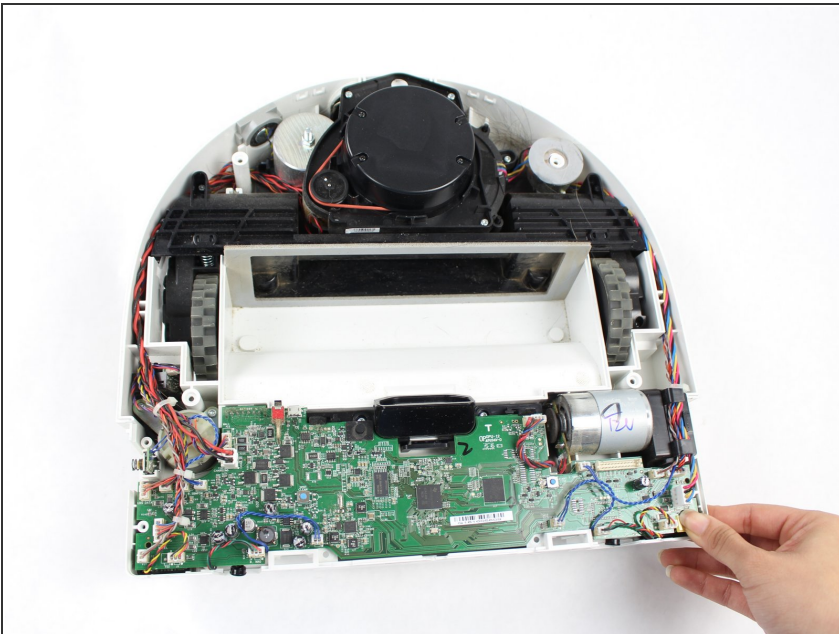
## Step 9



- Push the clips, located in the back side, inward.
- Gently lift up the top cover until you can see the wires. Then gently un-clip all the wires.

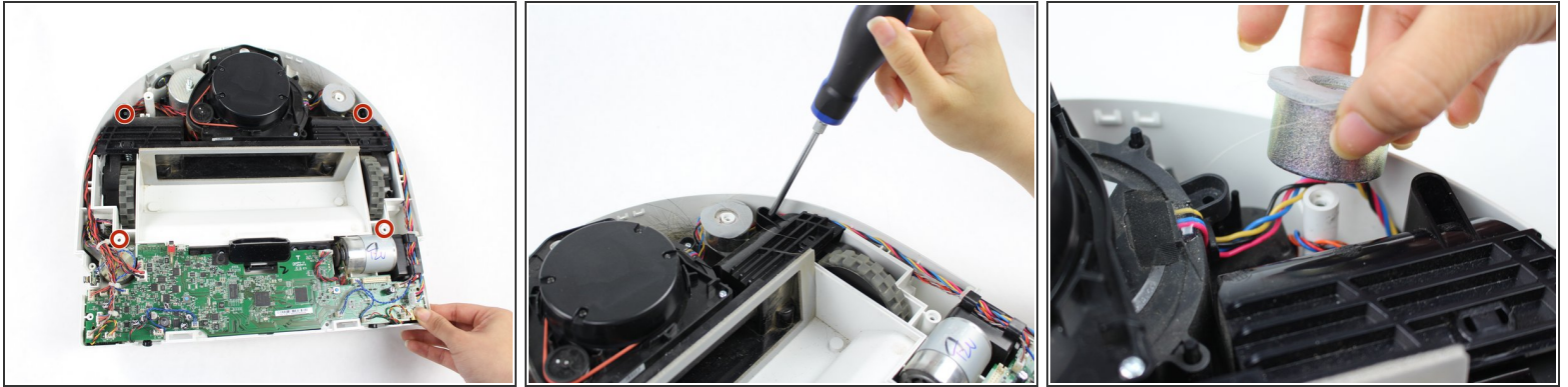
 When you lift the top cover be careful because the wires are thin and fragile.

## Step 10



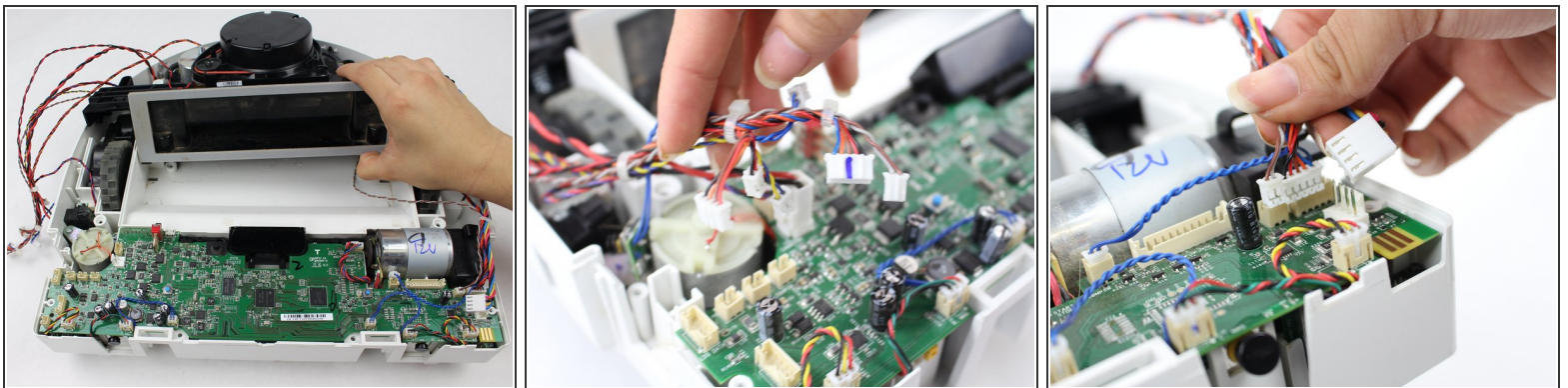
- Once you have carefully removed the wire clip; you can fully remove the top cover.

## Step 11 — Wheel



- Locate the screws that mount the wheel extension to the Robot.
- Unscrew the four 11mm screws indicated with a Torx T10 screwdriver to remove the frame.
- ⓘ Make sure to remove the metallic weight. However, this does not require the removal of any screws.

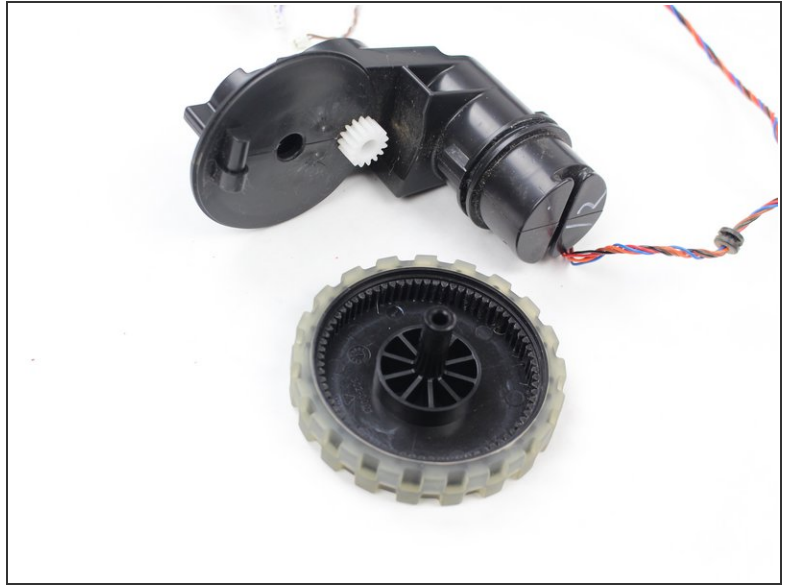
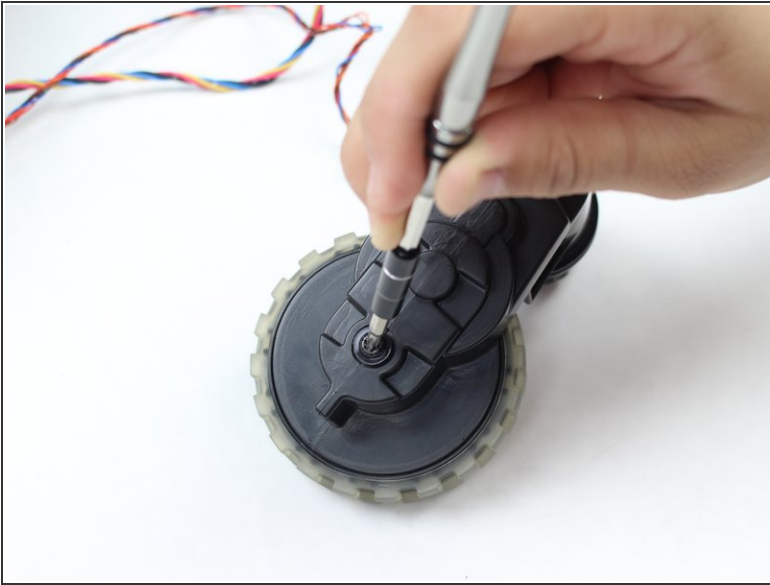
## Step 12



- Delicately lift up the frame holding the laser. This will access the wheels.
- Detach the wheel wires that are connected to the motherboard.
- Once the wires are detached, the wheel are free from their casing.



## Step 13



- Use a Torx T15 screwdriver to remove the 32.5mm screw.
- Finally, just hold and separate the wheel from its axle.

To reassemble your device, follow these instructions in reverse order.