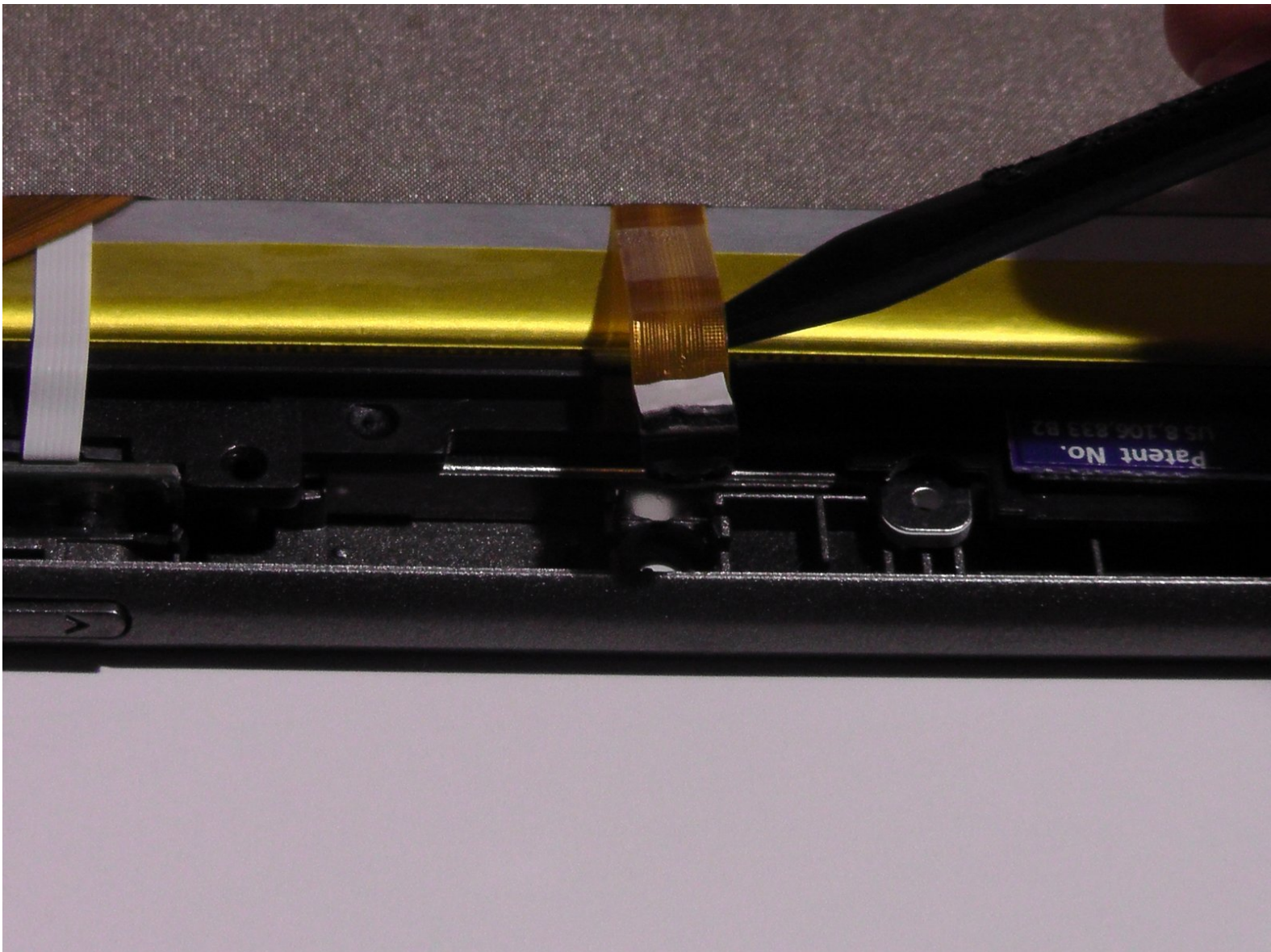




Neo3Do Front and Back Camera Replacement

Use the steps given in this guide to remove and replace the Neo3DO front and back camera.

Written By: Daniel Evans





TOOLS:

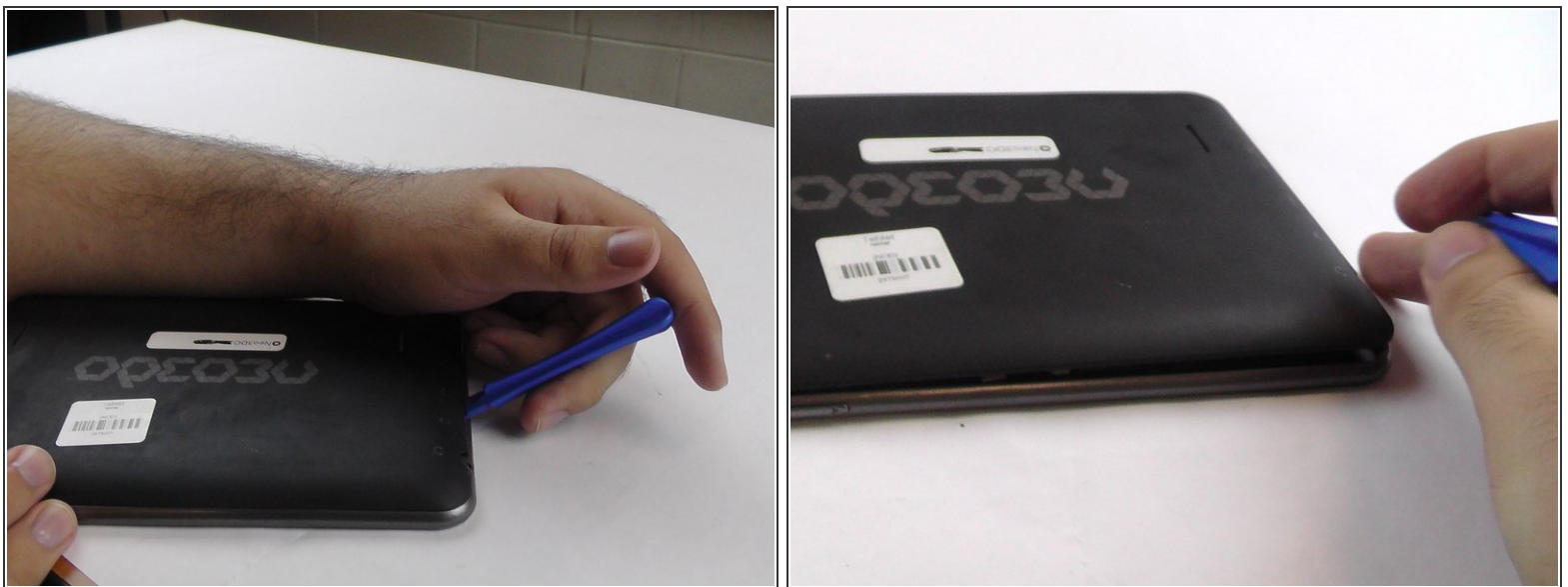
- [iFixit Opening Tools](#) (1)
- [Precision Tweezers Set](#) (1)
- [Spudger](#) (1)

Step 1 — Back Panel



- Turn the Neo3DO face down so that the logo is facing toward you.
- Insert the plastic opening tool between the metal frame and the plastic back panel, as shown.

Step 2



- Gently pry the back panel upwards.
- ⚠ Ensure the tool does not slip into the device and damage the internals.

Step 3



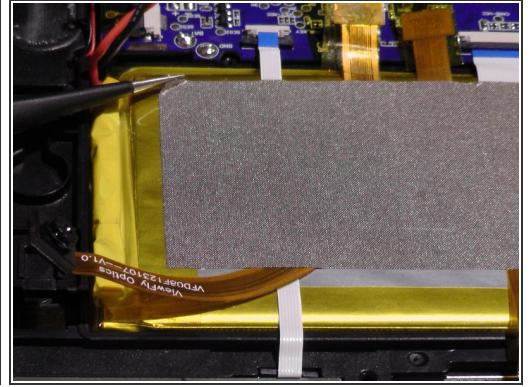
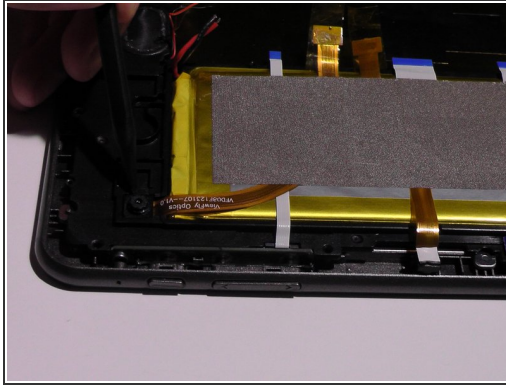
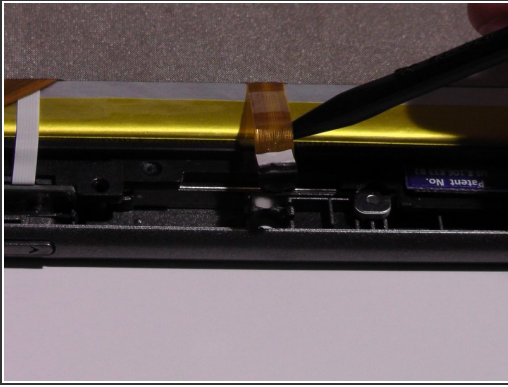
- Once the back panel has been pried away from the bottom and sides of the Neo3DO, lift the back panel up and away from the tablet.

Step 4



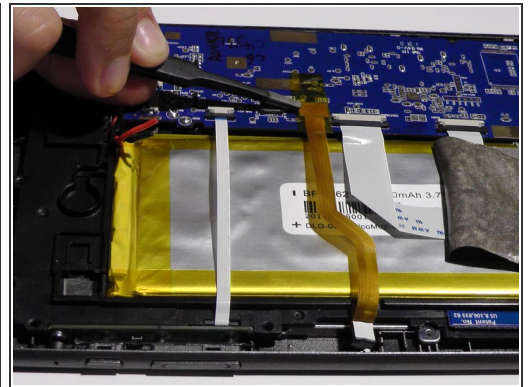
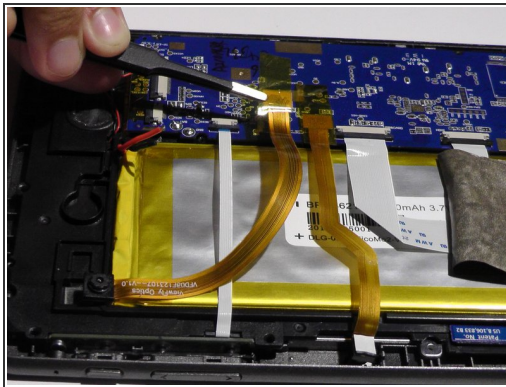
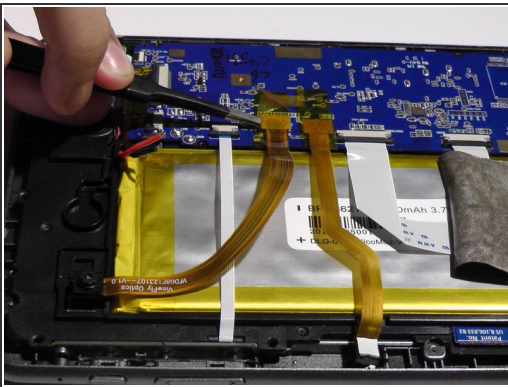
- When replacing the back panel, place the top edge of the back panel against the top edge of the Neo3DO, as shown.
- ⓘ The top edge of the device is the edge closest to the camera. The top of the back panel is the side with the hole for the camera.

Step 5 — Front and Back Camera



- Remove the front and back camera from their sockets.
- Remove the silver tape from the battery.

Step 6



- Remove the ribbon wire from the socket.



Gripping the wire belt and pulling upwards may cause damage, be sure to avoid it.

To reassemble your device, follow these instructions in reverse order.