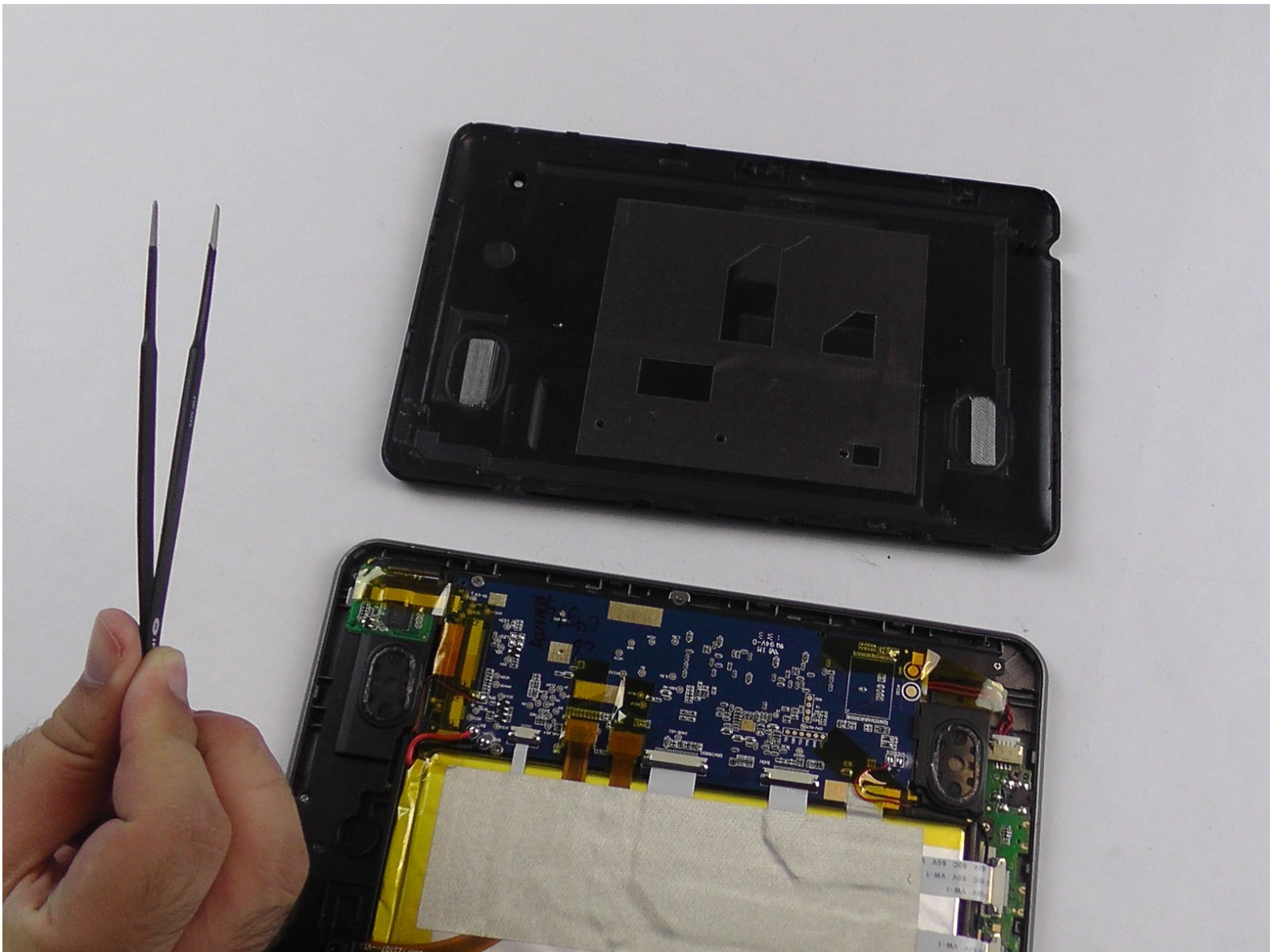




Neo3Do Wire Replacement

Use this guide to reconnect loose wires and connections within the device.

Written By: Michael Whitehead





TOOLS:

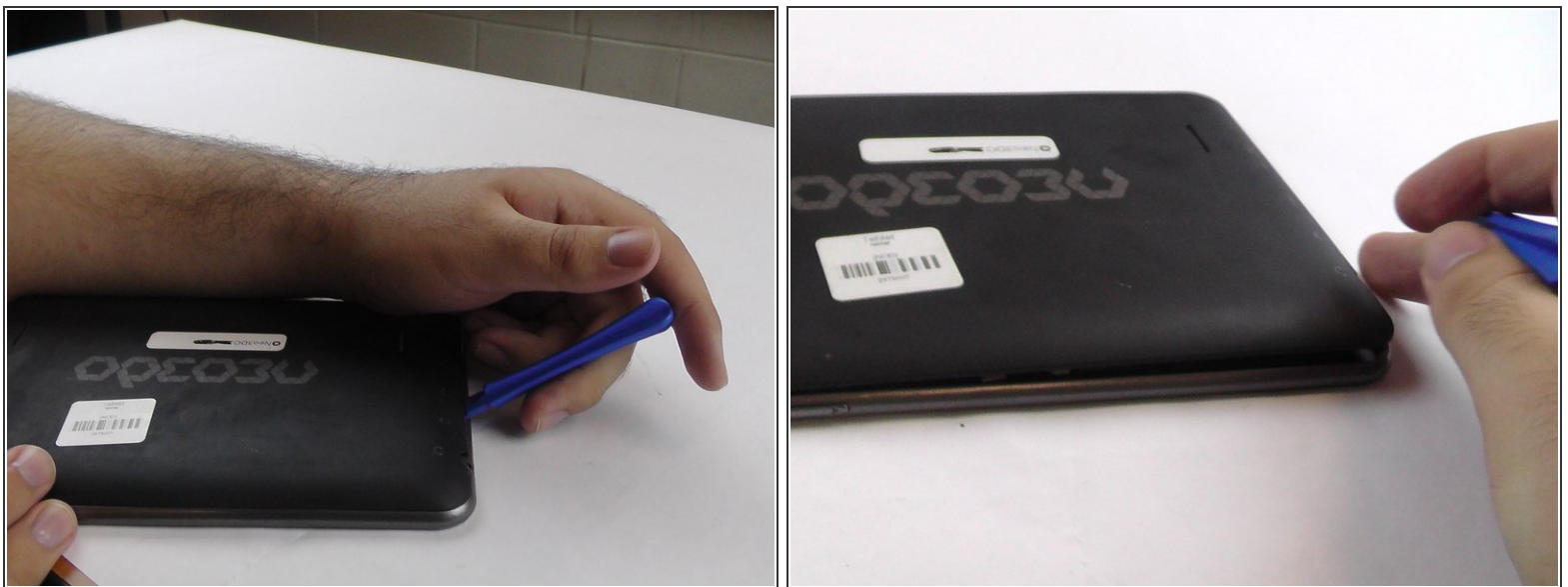
- [iFixit Opening Tools](#) (1)
- [Tweezers](#) (1)

Step 1 — Back Panel



- Turn the Neo3DO face down so that the logo is facing toward you.
- Insert the plastic opening tool between the metal frame and the plastic back panel, as shown.

Step 2



- Gently pry the back panel upwards.
- ⚠ Ensure the tool does not slip into the device and damage the internals.

Step 3



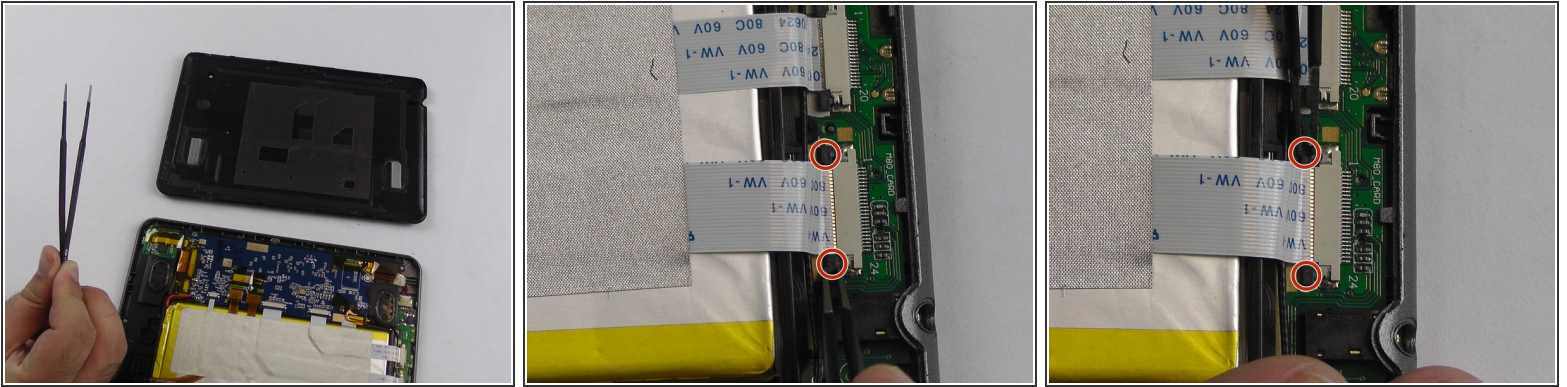
- Once the back panel has been pried away from the bottom and sides of the Neo3DO, lift the back panel up and away from the tablet.

Step 4



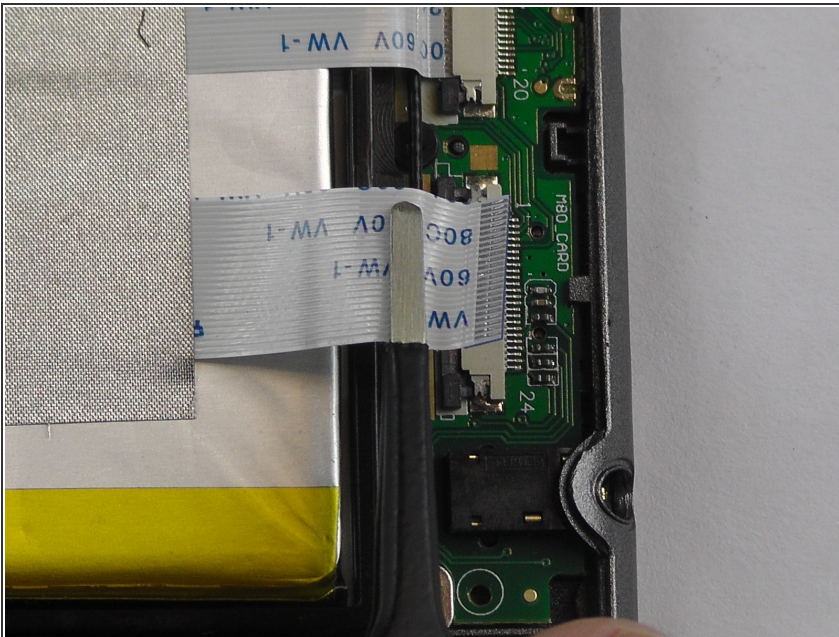
- When replacing the back panel, place the top edge of the back panel against the top edge of the Neo3DO, as shown.
- ⓘ The top edge of the device is the edge closest to the camera. The top of the back panel is the side with the hole for the camera.

Step 5 — Wire



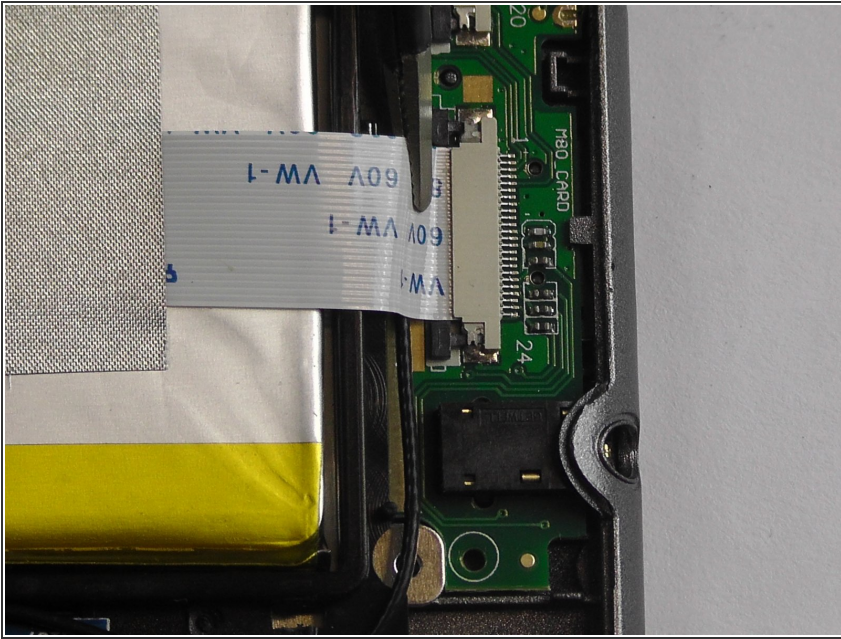
- Starting with an open back panel, take your tweezers and use them to pull back the black tabs on the connector.

Step 6



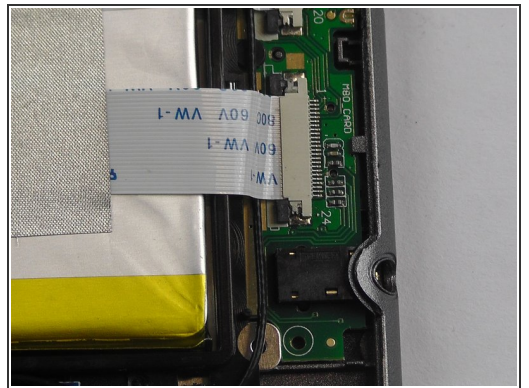
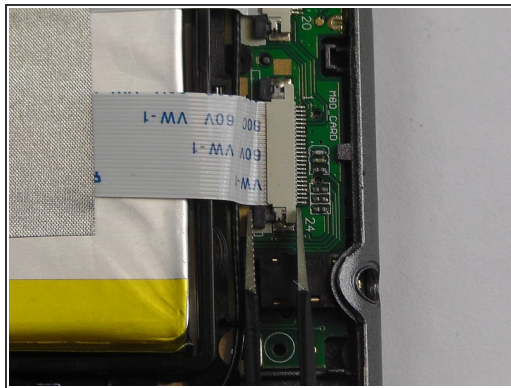
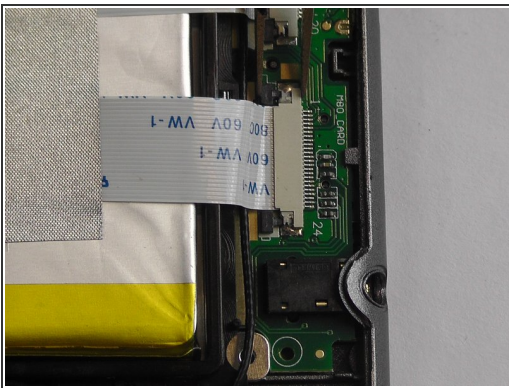
- Pull the wire completely from the socket.
- ⓘ Check the metallic parts for signs of damage or corrosion. If either exists, you might need to replace the battery entirely.

Step 7



- Re-insert the wire into the socket.

Step 8



- Using the tweezers, push the black tabs back in.

To reassemble your device, follow these instructions in reverse order.