



Nerf Alpha Trooper CS-18 Firing Spring Replacement

This guide will explain how to replace the primary firing spring of the Nerf Alpha Trooper CS-18.

Written By: Cameron Twilley



INTRODUCTION

If the primary firing spring becomes jammed or damaged, your Nerf rifle may have a decreased firing distance, or even worse may not be able to fire at all. This guide will explain how to replace the primary firing spring of the Nerf Alpha Trooper CS-18.

Note: This guide may also be used for the purpose of upgrading the primary firing spring of your Nerf Alpha Trooper CS-18.



TOOLS:

- [Spudger](#) (1)
 - [Phillips #0 Screwdriver](#) (1)
 - [4 mm Bit Extension](#) (1)
-

Step 1 — Firing Spring



✦ Keep in mind that there are many screws of varying length involved in the disassembly of this device. It is important to group screws together by length to ensure proper reassembly.

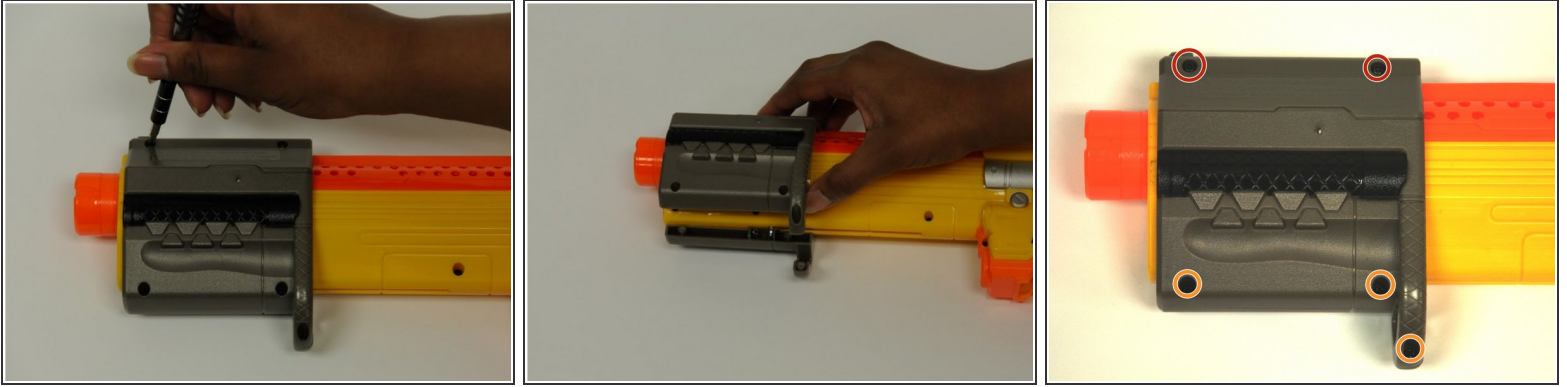
⚠ Be sure that the device has been discharged and is unloaded before beginning the disassembly.

Step 2



- Look at the rear of the rifle. Remove the two 10 mm phillips head screws that hold the black cap to the rear of the rifle.
- Remove the black cap.
- ⓘ Make note of how the black cap is removed as it must be put on in the same manner during reassembly.

Step 3



- Point the barrel of the device to the left. Remove the two 8mm philips head screws (the two top screws) holding the device slide together.
 - Keep the barrel of the device pointing to the left. Remove the three 10 mm philips head screws from the bottom of the device slide.
 - Once all screws are removed, separate the two halves of the device slide and put them aside.
- ☑ Be sure to keep track of which screws correspond to the correct holes.

Step 4





- Keeping the barrel of the device pointing to the left, remove the 14 10mm philips head screws from the body of the device.
- ⓘ A screw driver extension may be required to remove some screws.
- With the device pointing in the same direction, remove the two 5 mm philips head screws from the body of the device.
- With the device pointing in the same direction, remove the two 8 mm philips head screws from the body of the device.
- ✦ Screws vary in length. Be sure to keep track of which screws correspond to the correct holes.

Step 5



- By gripping the cartridge insert, pull the two halves of the device apart.

 **Warning!** The firing spring is not fastened to the device. It may fall out of the device when separating it.

-  If you are having difficulty separating the two halves of the device, use a spudger to pry the two halves apart.

Step 6



- You should now be able to pull the primary firing spring from the rear of the rifle.

To reassemble your device, follow these instructions in reverse order.