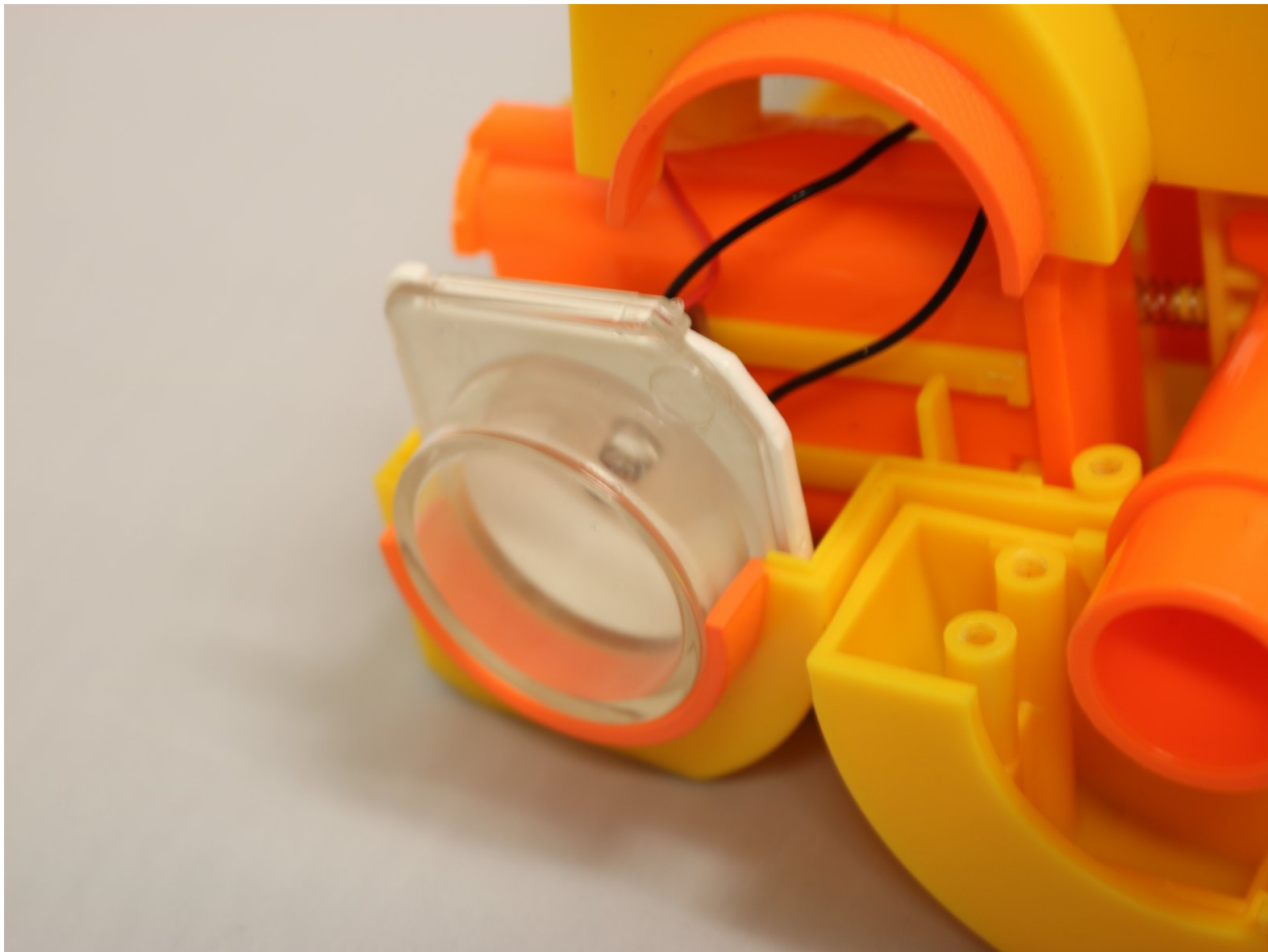




Nerf N-Strike Deploy CS-6 Light-bulb Lens Replacement

In this repair guide, we will show you a step-by-step on how to replace the lens to the light-bulb. Having a corrected lens will enhance the light-bulb's use.

Written By: Alec Hernandez



INTRODUCTION

When users prefer to use the flashlight from the device, can be the complication that the lens is damaged. Obscuring the lens can alter the lights focus on other objects. In this guide, we will show you how to properly disassemble your device to access the lens. Upon doing so, you will then be able to dispose the damaged lens and put in the replacement lens.



TOOLS:

- [Phillips #0 Screwdriver](#) (1)
-

Step 1 — Light-bulb Lens



- Proceed to take out the hidden screws when the device is collapsed.

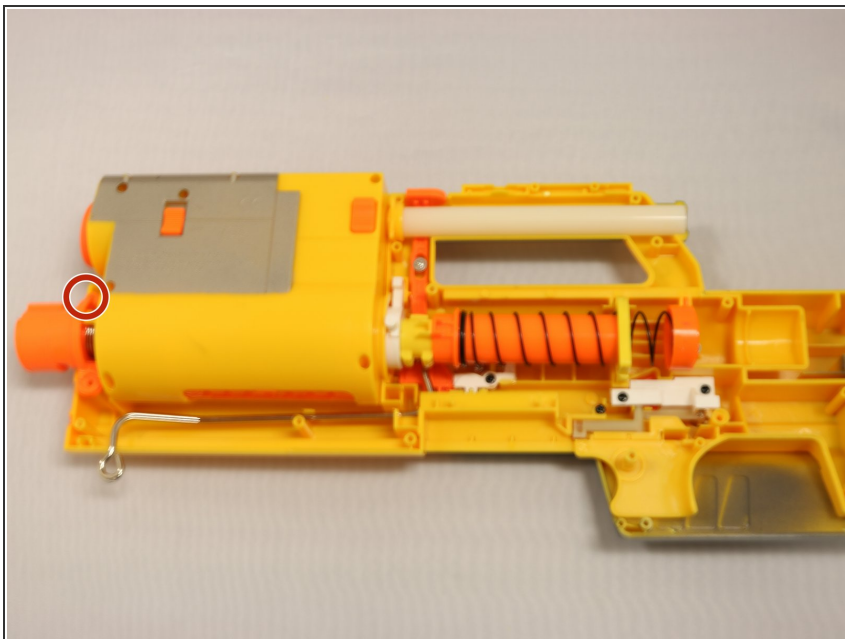
ⓘ Hidden screws measure out to 1.7 cm

Step 2



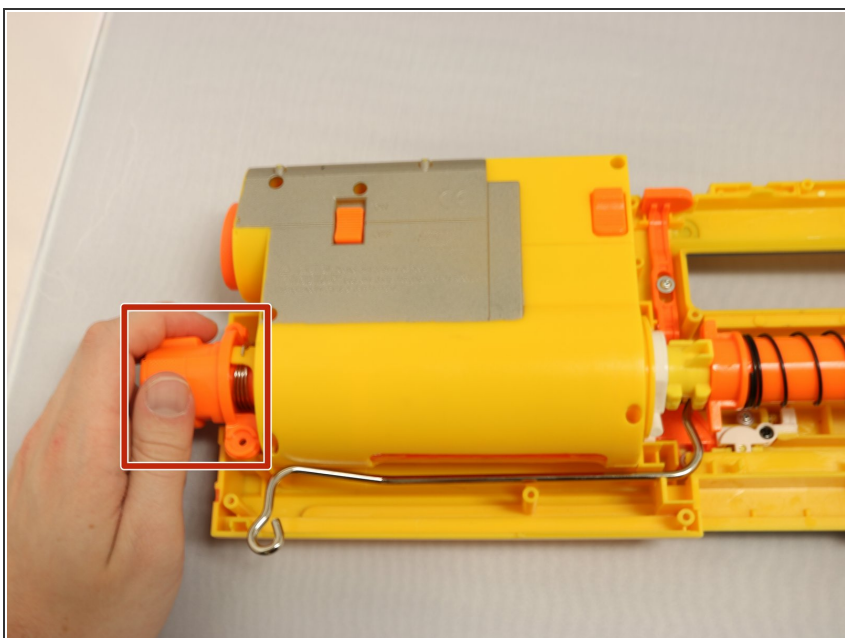
- Once the hidden screws are out, extend your device in stealth mode.
 - Once the device is extended out, proceed to take out the necessary screws as shown.
- ⓘ For the pump, the screw's length extends out to 1.9 cm. The majority size of the screws extend out to 1.3 cm.

Step 3



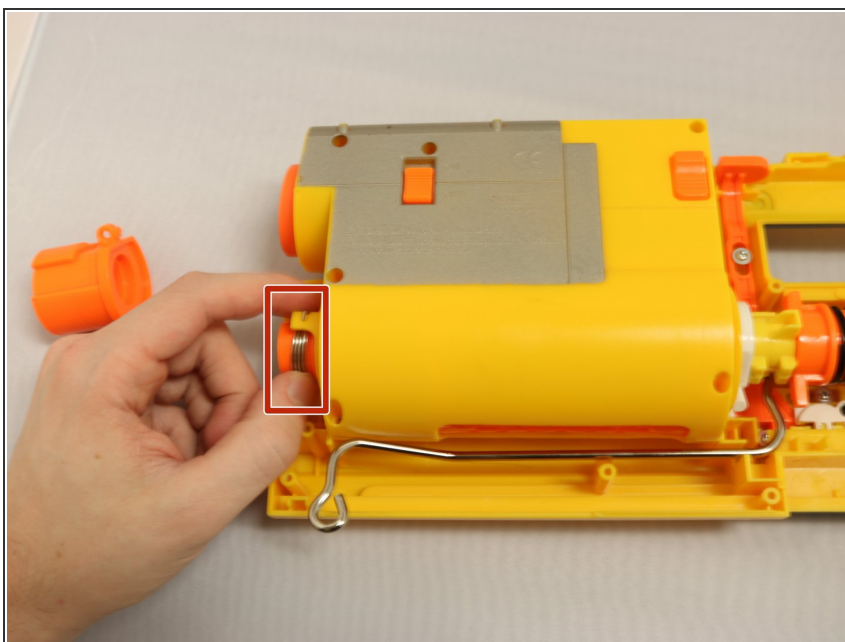
- Once all the necessary screws are taken off, the interior of your device should be visible.
- Unscrew the orange barrel located in front of your device.

Step 4



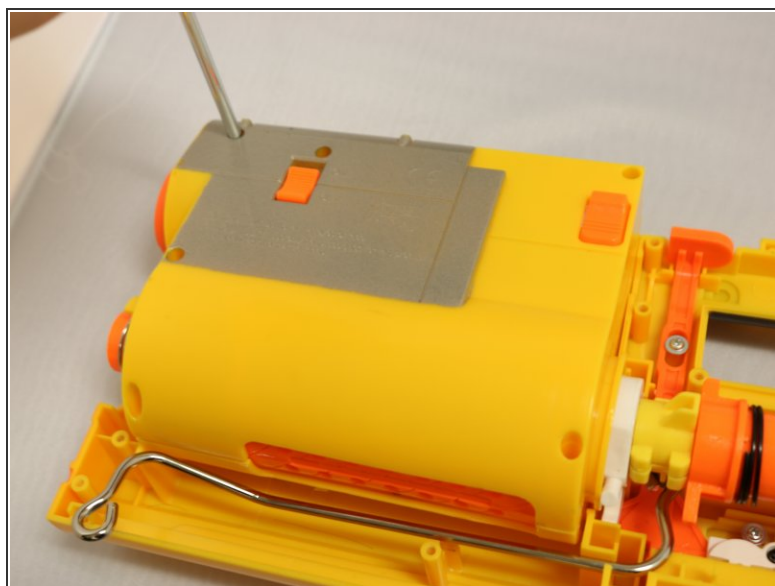
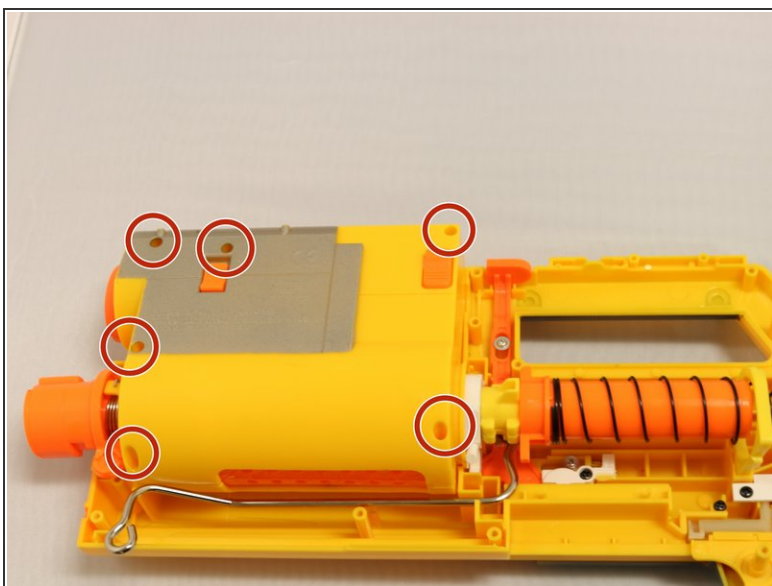
- Now that the cover is off and the screws are out, pry off the barrel of the device.

Step 5



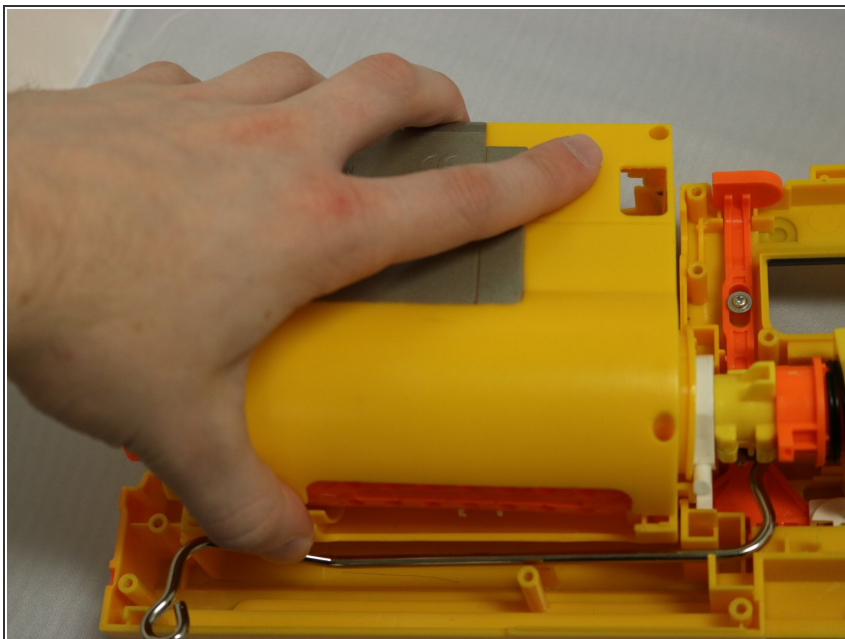
- Once the orange barrel of the device has been pried off, proceed to take the metal clip off from where it is currently located.

Step 6



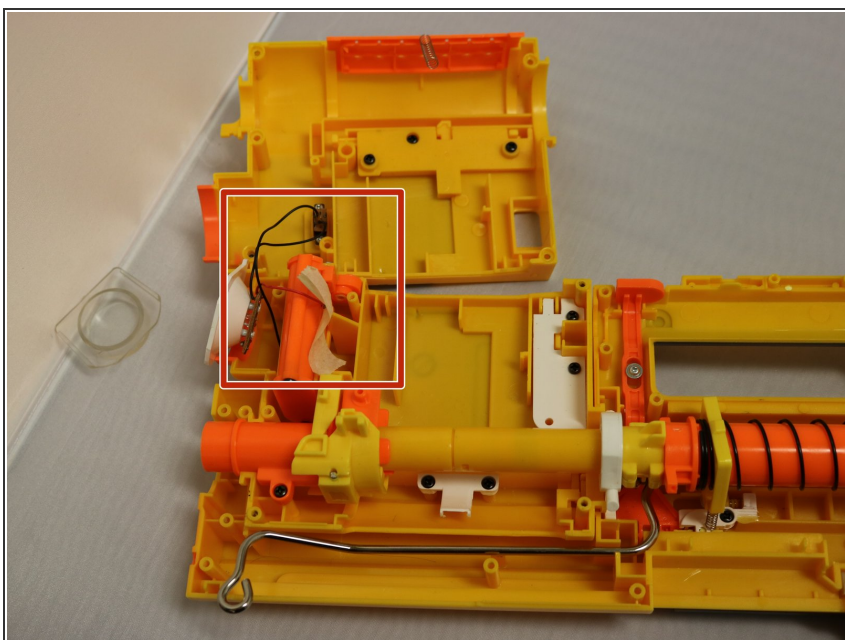
- As shown, use your Phillips #0 head screwdriver to unscrew the highlighted areas

Step 7



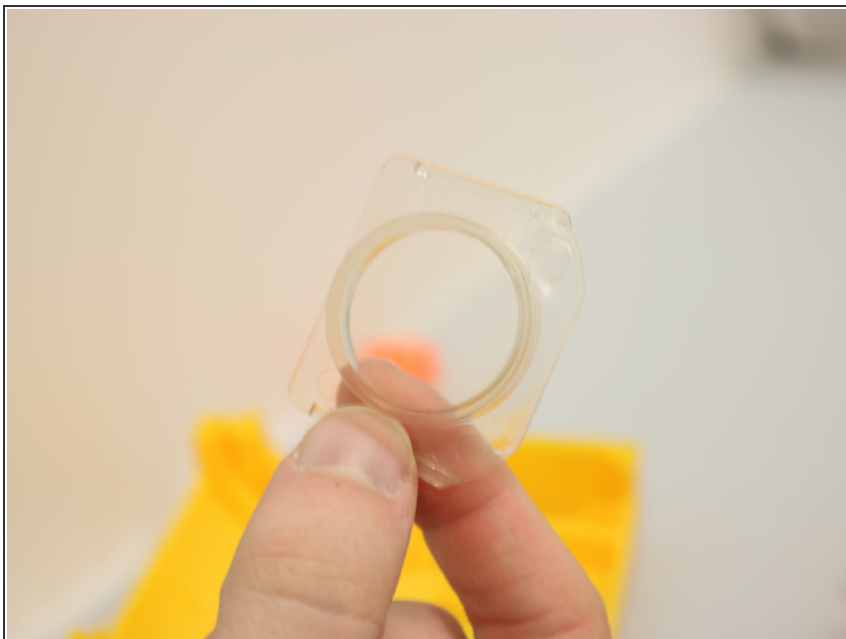
- Once all the screws have been removed, the cover for the light-bulb is able to come off.
- ⓘ Gently remove the cover to maintain the safety of your device.

Step 8



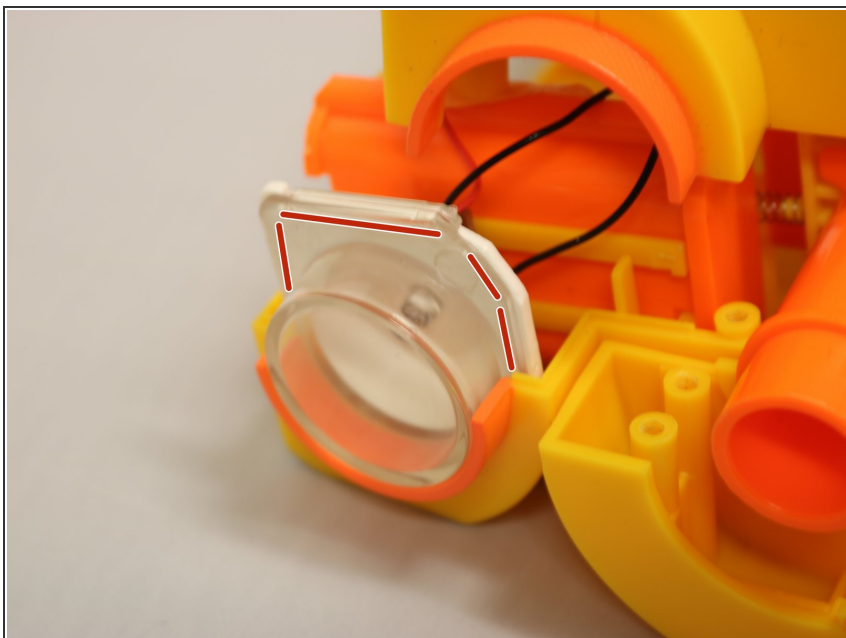
- When taking off the cover piece, **gently** place it above the device as shown.
- ⓘ Regarding the ligh-bulb cords, it should have a strip of tape to keep it down.

Step 9



- Near the light-bulb is the lens. Gently pry it off.
- ☑ Correctly dispose your damaged lens.

Step 10



- Once you acquire your new lens, gently place it in front of the bulb.
- ⓘ As shown, the lens should be placed where the edges line up.

To reassemble your device, follow these instructions in reverse order.