



Nerf N-Strike Elite Strongarm Cocking Mechanism Replacement

This guide is for when you are having problems with the locking of your blaster, this guide will provide you with how to replace the spring located in the cocking mechanism of the gun.

Written By: Chelsea Ebey



INTRODUCTION

This guide is going to show you how to take apart the blaster to reach the spring that is located in cocking mechanism of the Nerf.

TOOLS:

- [Phillips #1 Screwdriver](#) (1)
-

Step 1 — Outer Shell



- Lay the Nerf Strongarm on its side, left side facing up.

Step 2



- Locate the 12 Philips head screws and remove them: Head Diameter= 4.3mm, Thread Pitch= 1mm, Screw Length= 8mm

Step 3



- Before removing the cover, make sure to first remove the cover for the cocking mechanism. The top half is freely removable.

⚠ The other half of the cocking mechanism is connected with a spring which may slide off the blaster. Be advised this is normal but worth watching to avoid damaging the spring.

Step 4



- At this time, remove the blaster cover to reveal its internals.
- ⓘ If the blaster is resting on its side, the barrel may shift slightly as it is leaning on itself (seen in the image). This is normal but should be handled with care to keep the blaster together.

Step 5



- Once the screws have been removed, lift the top half of the gun off.
- ⓘ Notice, the gray colored piece must be removed first in order for the larger half to be removed.
- Take care and try not to lose any smaller pieces as you open it up.
- Locking tab for attachments.

Step 6 — Cocking Mechanism



- Remove the screw on the inside of the gun.
- Screw specifications: Philips head, Head Diameter= 4.3mm, Thread Pitch= 1mm, Screw Length= 8mm

Step 7



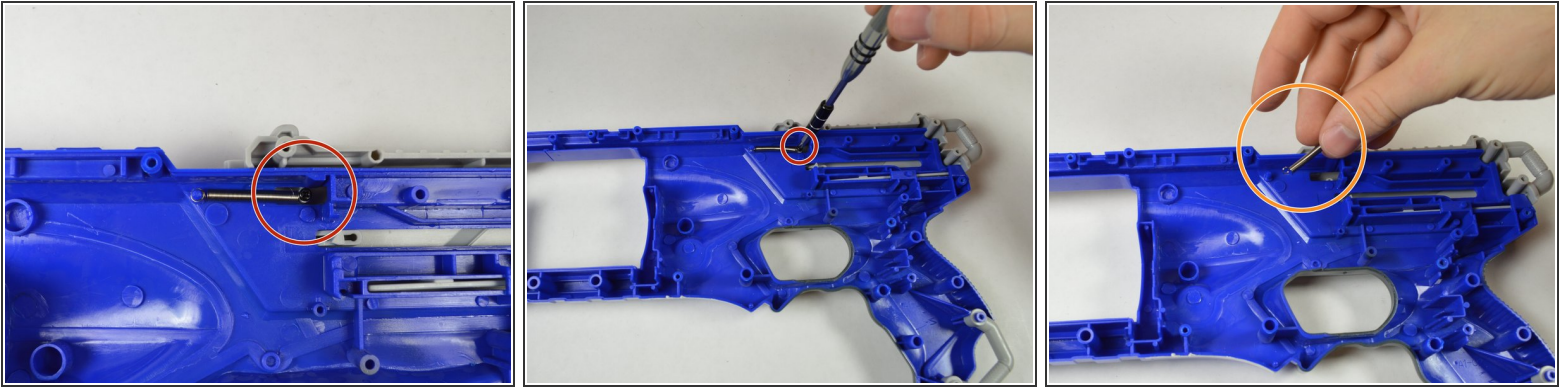
- Remove the barrel from the blaster.
- Remove the front component from the blaster.
- Both components do not need any tools to be removed.

Step 8



- First, remove the trigger.
- Then remove the cocking holdback.
- Then remove the air compressor chamber.

Step 9



- Locate and remove the indicated screw.
- This is the spring controlling the cocking mechanism. If the spring is damaged, replace it.

To reassemble your device, follow these instructions in reverse order.