



Nespresso Inissia Disassembly

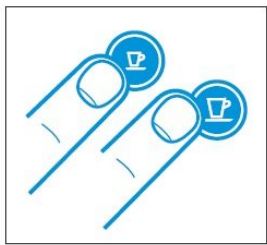
Full disassembly to expose all replaceable parts.

Written By: Léon Witteman

EMPTYING THE SYSTEM BEFORE A PERIOD OF NON-USE AND
FOR FROST PROTECTION, OR BEFORE A REPAIR/
VIDANGE DU SYSTEME AVANT UNE PERIODE D'INUTILISATION,
POUR LA PROTECTION CONTRE LE GEL OU AVANT UNE REPARATION

EN

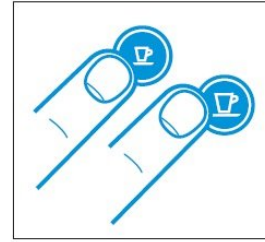
FR



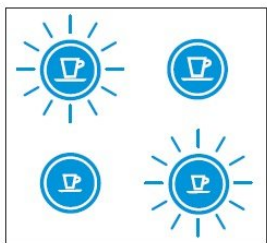
1. To enter the emptying mode, press both the Espresso and Lungo buttons to turn the machine off.
1. Pour entrer dans le mode de vidange, appuyez simultanément sur les boutons Espresso et Lungo pour éteindre la machine.



2. Remove the water tank and open the lever.
2. Retirez le réservoir d'eau et ouvrez le levier.



3. Press both the Espresso and Lungo buttons for 3 seconds.
3. Appuyez simultanément sur la touche Espresso et Lungo pendant 3 secondes.



Both LEDs blink alternately.
Les deux voyants clignotent alternativement.



4. Close the lever.
4. Fermez le levier.

5. Machine switches off automatically.
5. La machine s'arrête automatiquement.

6. Empty and clean the used capsule container and drip tray.
6. Videz et nettoyez le bac à capsules usagées et bac de récupération.

INTRODUCTION

The machine in question is from Magimix. The other available version (Krupps) is very similar and this guide should be applicable to those.

First of all consider your machine's warranty (usually 2 years), after (partial) disassembly you're not eligible for warranty anymore.

Unplug the machine and find a workplace that you're not afraid to scratch, which I found out the hard way.



TOOLS:

- [Flathead Screwdriver](#) (1)
 - [Flathead 3/32" or 2.5 mm Screwdriver](#) (1)
 - [T20 Torx Screwdriver](#) (1)
 - [Small Chain Nose Pliers](#) (1)
-

Step 1 — Emptying the machine

EMPTYING THE SYSTEM BEFORE A PERIOD OF NON-USE AND FOR FROST PROTECTION, OR BEFORE A REPAIR/
VIDANGE DU SYSTEME AVANT UNE PERIODE D'INUTILISATION, POUR LA PROTECTION CONTRE LE GEL OU AVANT UNE REPARATION



1. To enter the emptying mode, press both the Espresso and Lungo buttons to turn the machine off.
1. Pour entrer dans le mode de vidange, appuyez simultanément sur les boutons Espresso et Lungo pour éteindre la machine.



2. Remove the water tank and open the lever.
2. Retirez le réservoir d'eau et ouvrez le levier.



3. Press both the Espresso and Lungo buttons for 3 seconds.
3. Appuyez simultanément sur la touche Espresso et Lungo pendant 3 secondes.



Both LEDs blink alternately.
Les deux voyants clignotent alternativement.



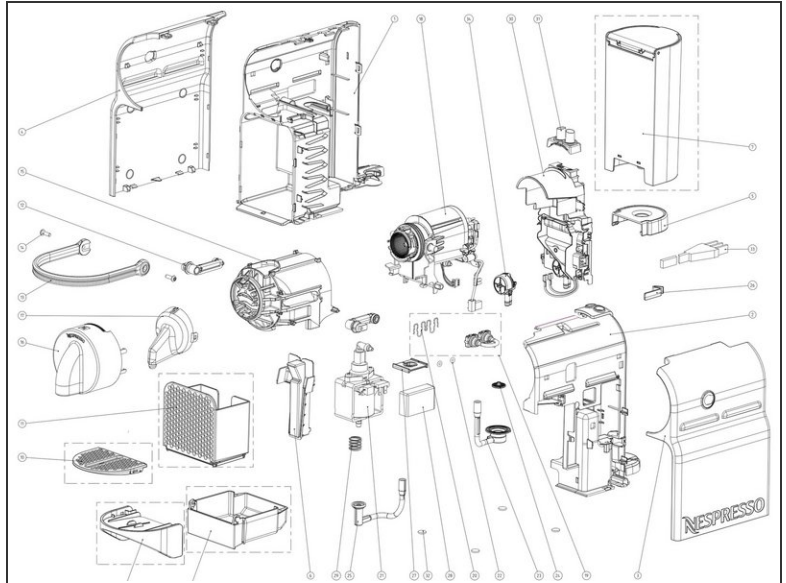
4. Close the lever.
4. Fermez le levier.



5. Machine switches off automatically.
5. La machine s'arrête automatiquement.

6. Empty and clean the used capsule container and drip tray.
6. Videz et nettoyez le bac à capsules usagées et bac de récupération.

13



- Remove all water from the system. (From the Nespresso manual.)
- image 2: exploded view of the machine. Source: buyspares.com

Step 2 — Remove the first part



- Pull straight forward with a fair amount of force.
- Once you hear a click, pull the part straight down. This should go easily.

Step 3 — Remove the handle



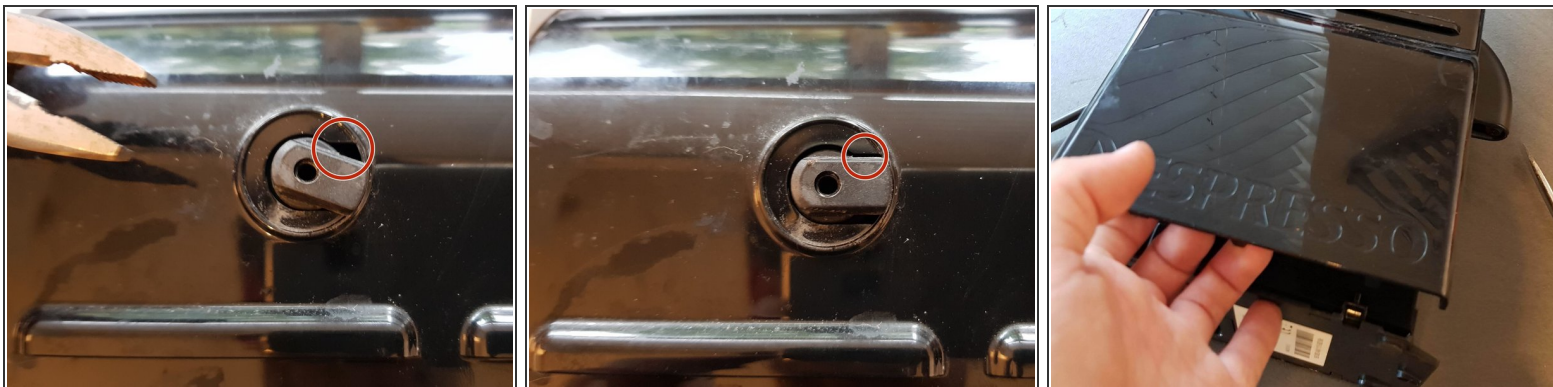
- Use a T20 torx bit (star-shaped). A screwdriver that fits should work fine.

Step 4 — Remove side cover 1/2



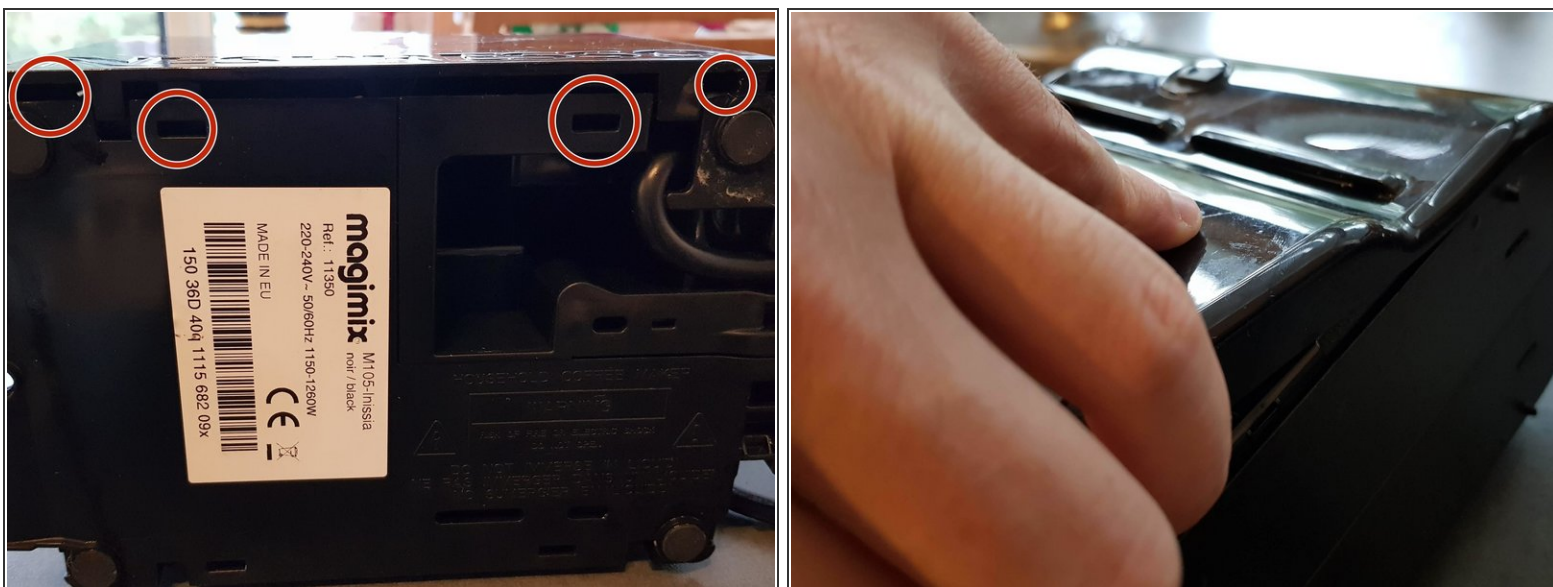
- Close the cup-holder firmly.
- Photo's 2 and 3, push the screwdriver in and wiggle a bit to undo the clips. There's a total of 4 clips.

Step 5 — Remove side cover 2/2



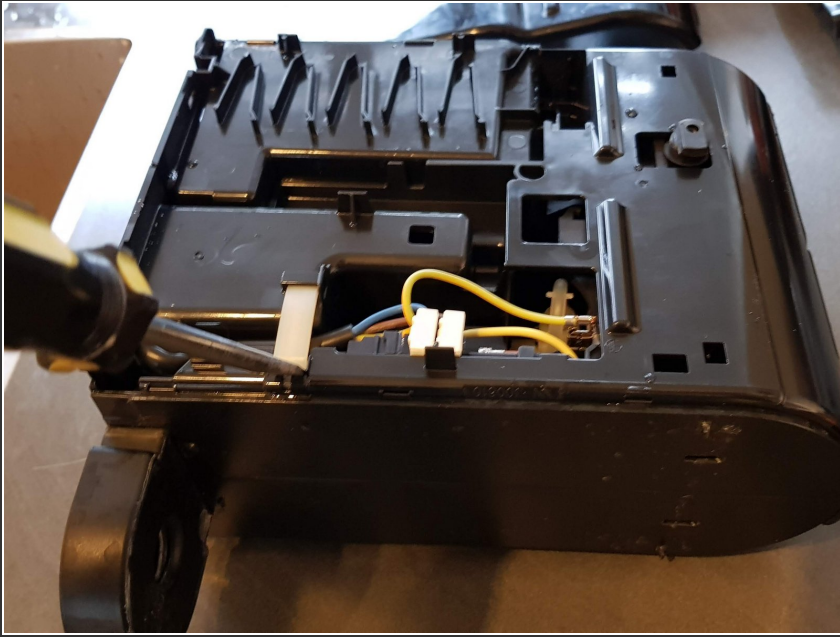
- Make sure the notch lines up.
- Pull the cover away. Once there's a little room, move your fingers up a bit and pull on the sides.

Step 6 — Remove other side cover



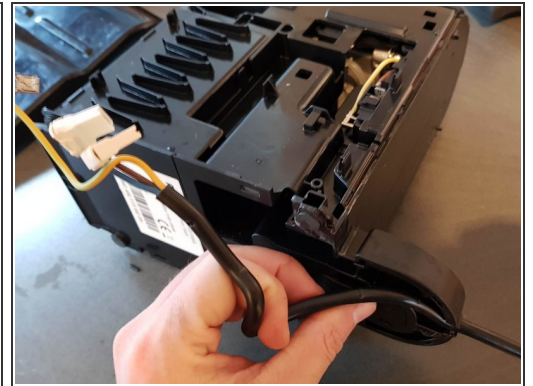
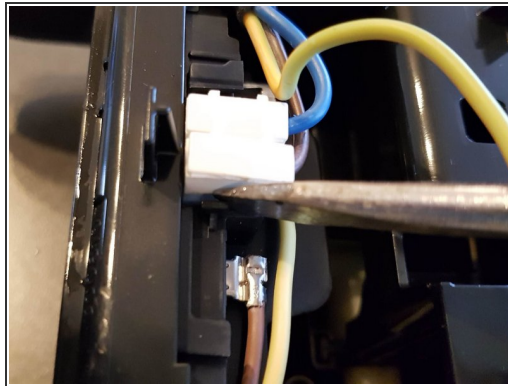
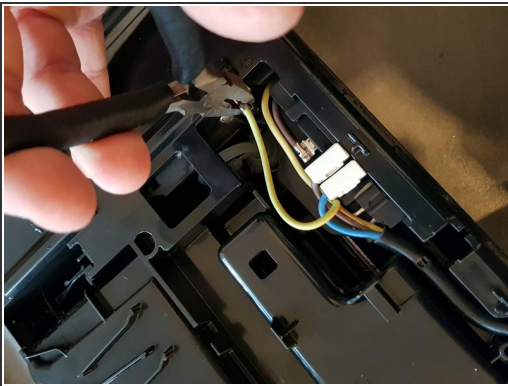
- Repeat on the other side

Step 7 — Remove the white clip



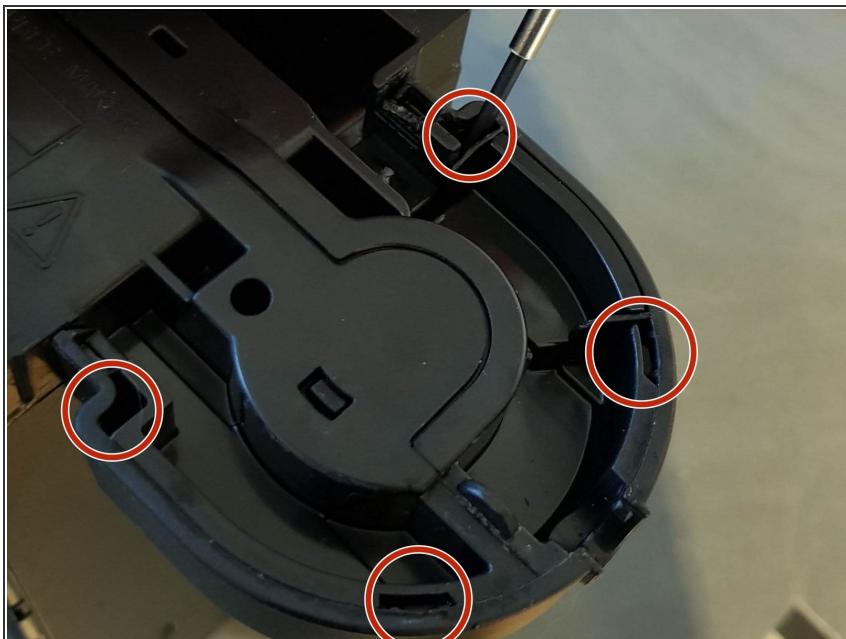
- Insert wisdom here.

Step 8 — Remove power wires



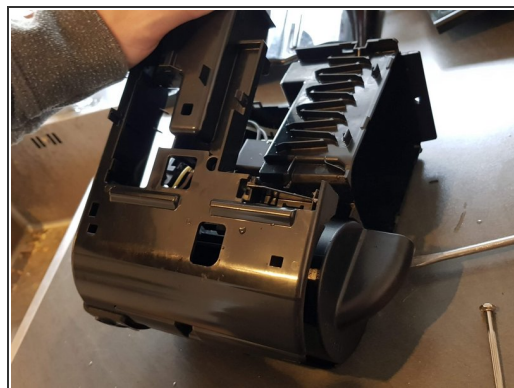
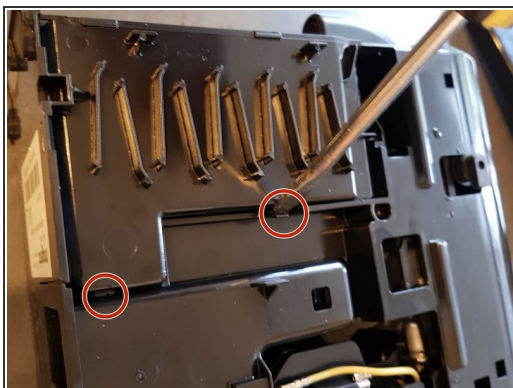
- Unplug the device first! Remove ground, life and neutral wires.
- Remove the whole wire from its slot.

Step 9 — Remove the water tank seat



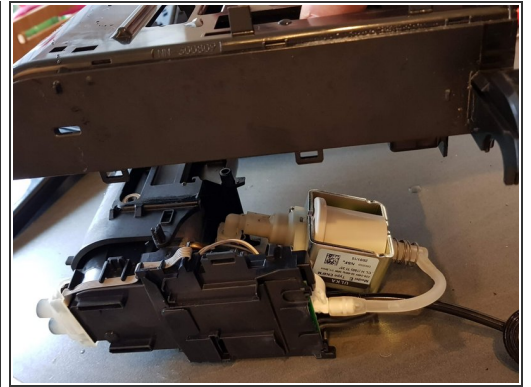
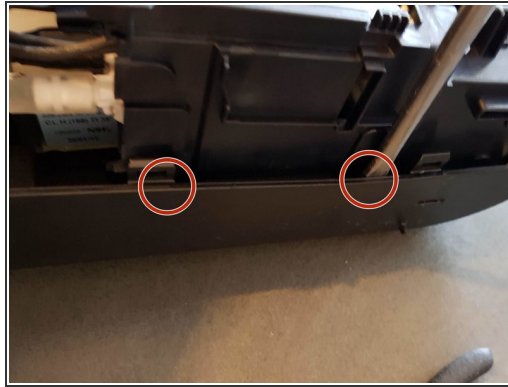
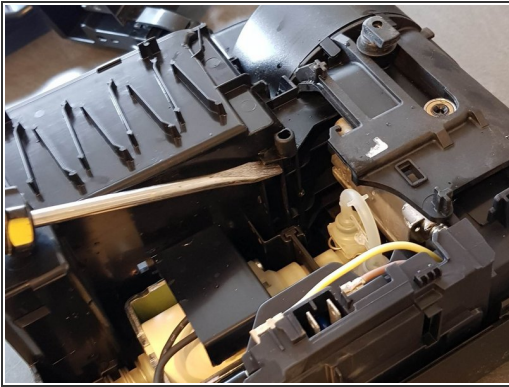
- Unclip the clips using a thin screwdriver

Step 10 — Remove inner housing first side



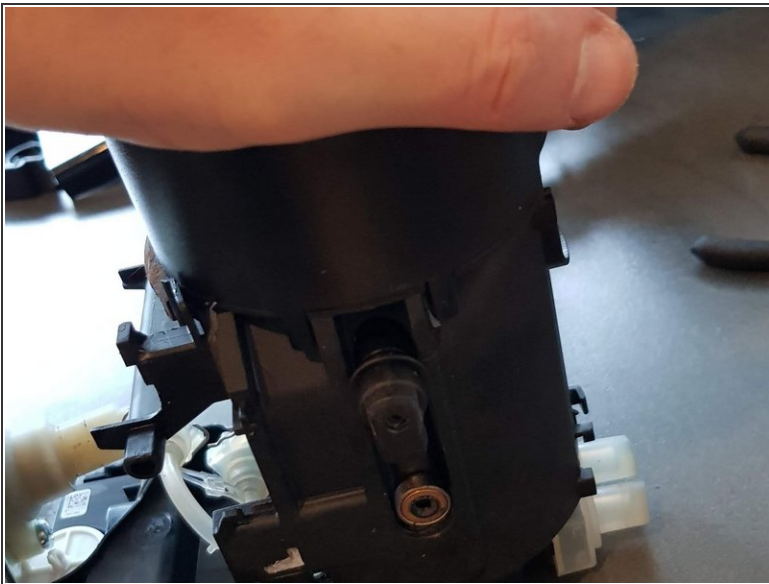
- Pry loose on these four spots and remove.

Step 11 — Remove inner housing second side



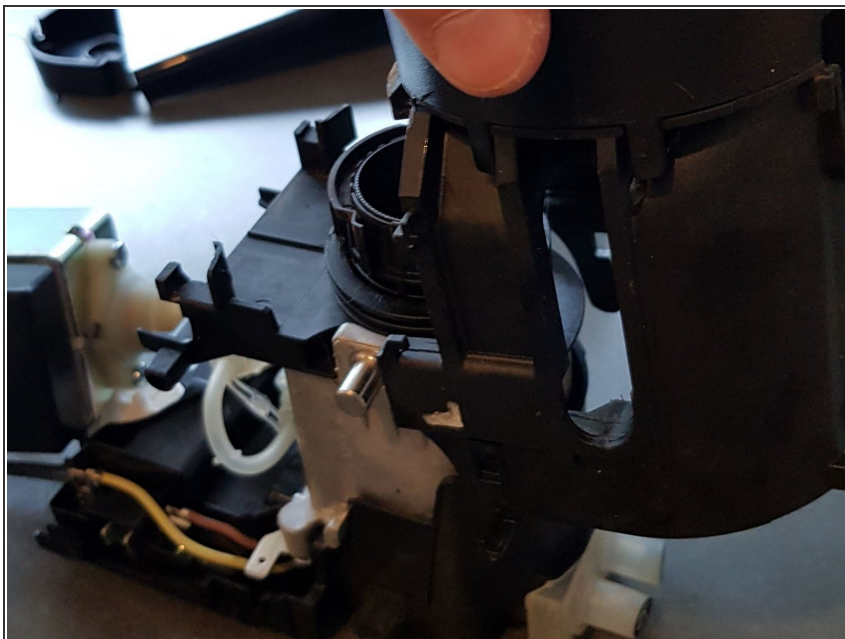
- Photo 1: Using leverage, pull up.
- Photo 2: unclip the two clips on the inside of the cover.
- Photo 3: turn over and lift the cover off.

Step 12 — Remove the lever seats



- Push on the assembly, front to back, to free up the lever seats. Then pull them out.

Step 13



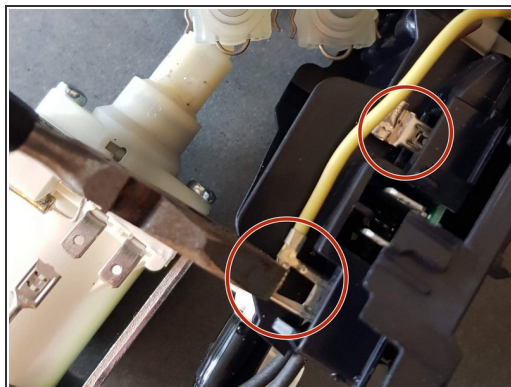
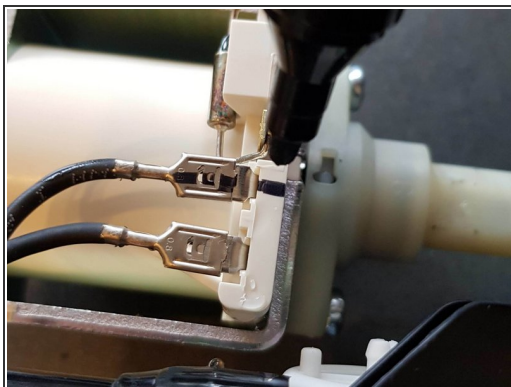
- The top part can be removed by having the metal pins follow the slots in an L shape.

Step 14



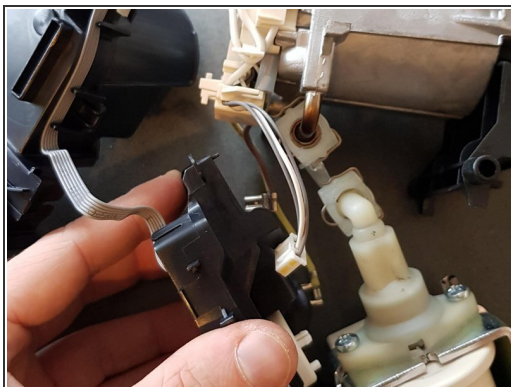
- Pry open both clips on one side of the spout, then both on the other side.

Step 15



- Mark one of the black leads for proper reinstallation.
- Remove the yellow and brown wire.
- And the white connector.

Step 16



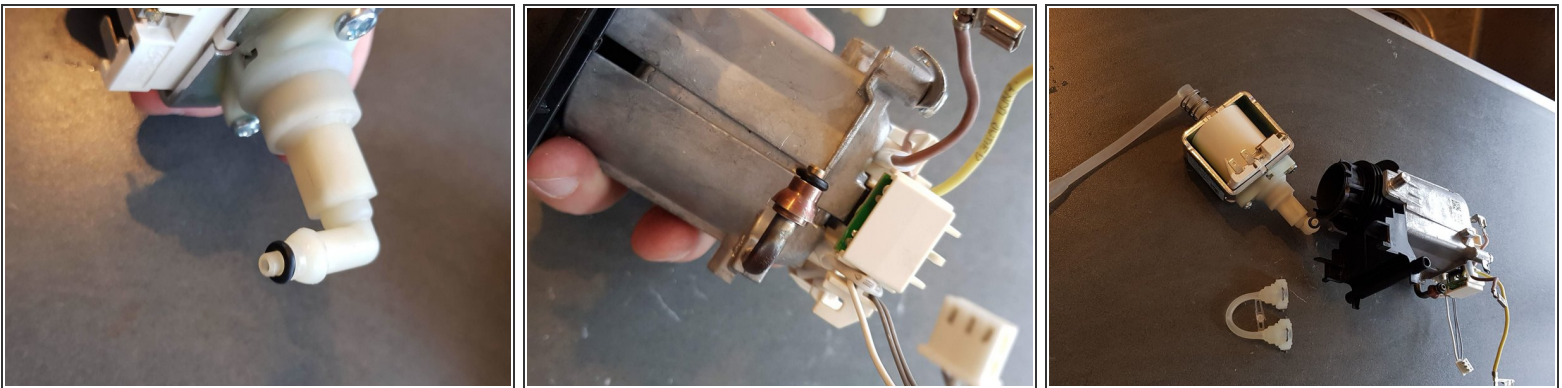
- Wiggle loose the last bit of black plastic.
- Pry off the white and black water lines.

Step 17



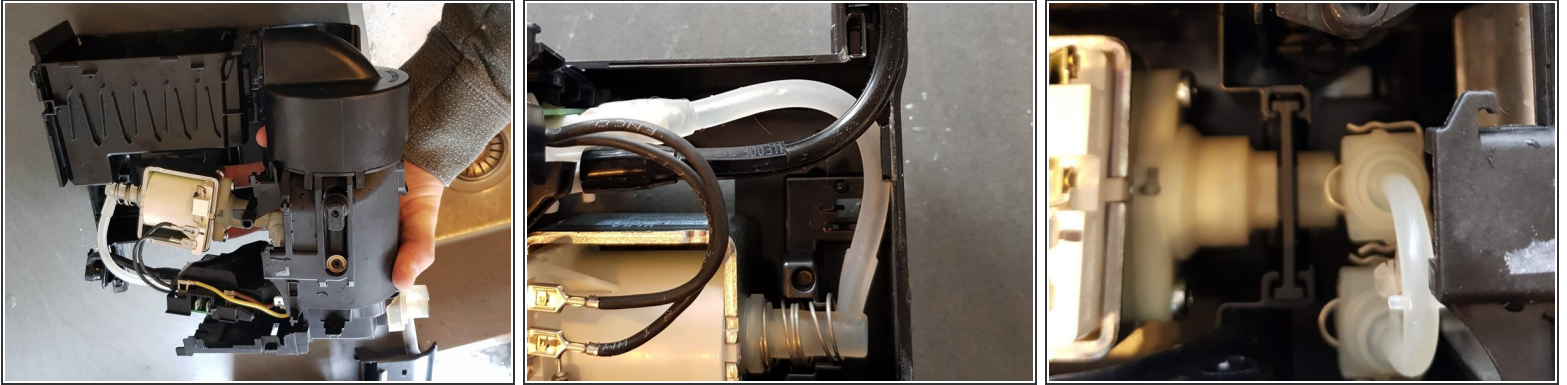
- These clips are tricky to remove.
- Photo 1: Pull open and down one of the ends.
- Photo 2: with a small/tiny screwdriver puch the wire down as far as you're able to and hold firmly with your finger.
- Photo 3: While holding the latter firmly, open up and move down the other part of the wire. This might require a few tries.

Step 18



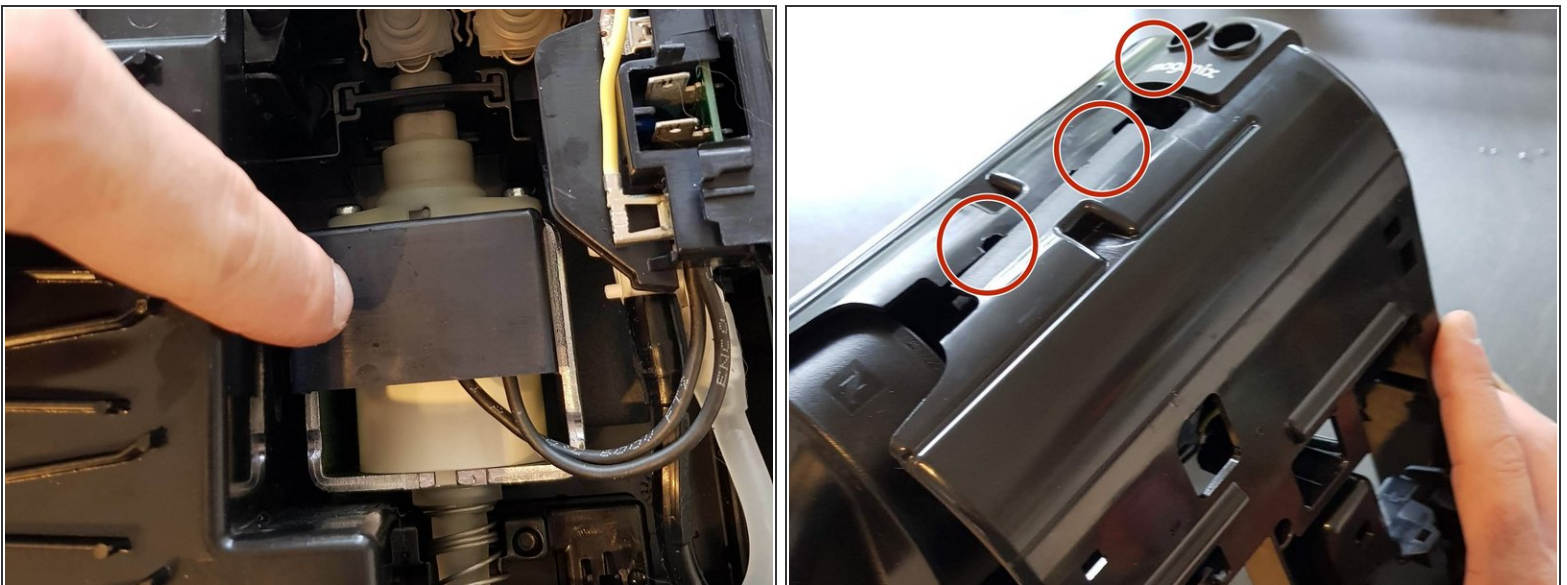
- Photo 1 and 2, note the tapered edges, these hold the wire clip in place. Reinstallation is simple, just push the on again.
- This was as far as I was able to go. In my case the part shown on the right in photo 3 was leaking in between the metal and plastic. Sadly it couldn't be disassembled any further.

Step 19



- Assembly is the reverse of disassembly. The next steps are some points of note.
- Photo 1: reverse of step 11: The easiest way to reassemble the side is to lay it flat and lower the inner body onto the side.
- Photo 2: reverse of step 11: Make sure the black line goes over the white one.
- Fit the rubber collar back over the pump.

Step 20



- Photo 1: Don't forget this cover.
- Photo 2: reverse of step 10: make sure the clips line up with the slots.

To reassemble your device, follow these instructions in reverse order, please take note of steps 19 and 20.