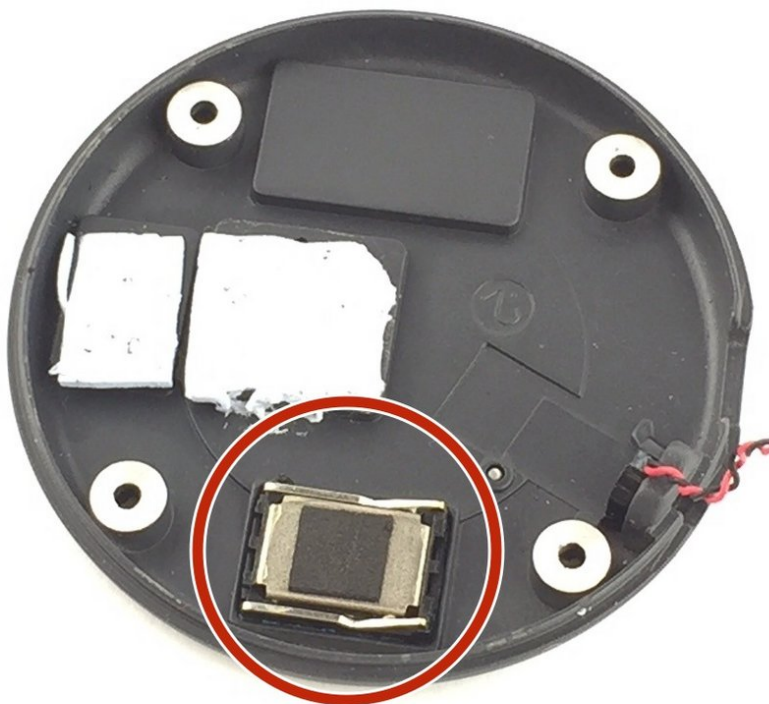




# Nest Cam Speaker Replacement

A step by step guide on how to replace the speaker in the Nest Cam.

Written By: Jade Weiss



---

## INTRODUCTION

The Nest Cam's speaker is responsible for producing sound and is an important part of the system, if your Nest Cam's audio is muffled or completely absent, the speaker may need to be replaced. This guide will help walk you through the steps of replacing a faulty speaker.



### TOOLS:

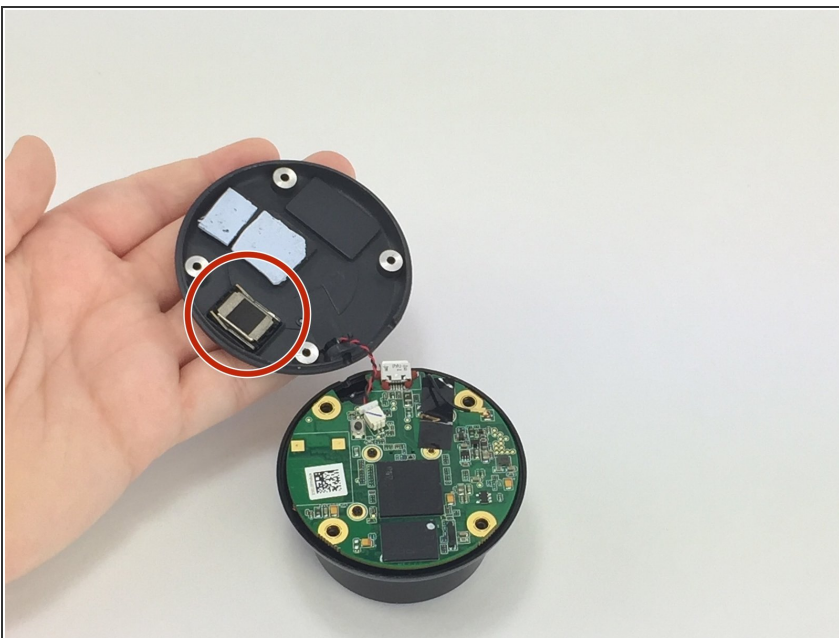
- [Spudger](#) (1)
  - [Phillips #000 Screwdriver](#) (1)
-

## Step 1 — Speaker



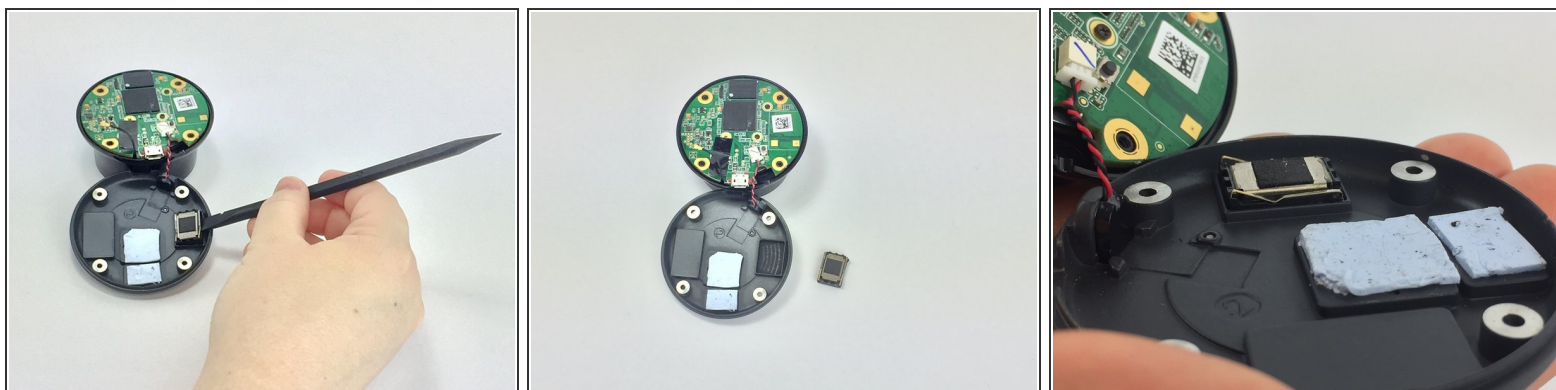
- Remove the four 6 mm screws from the back panel with the J000 Phillips head screwdriver.
- ⚠ We suggest designated areas to keep track of all screws.

## Step 2



- Open the back panel completely to expose the speaker indicated by the red circle.

## Step 3



- Remove old speaker gently with a spudger.
- ☑ When placing the new speaker in make sure the prongs are facing the right direction and will connect with the two connector points on the motherboard.

To reassemble your device, follow these instructions in reverse order.