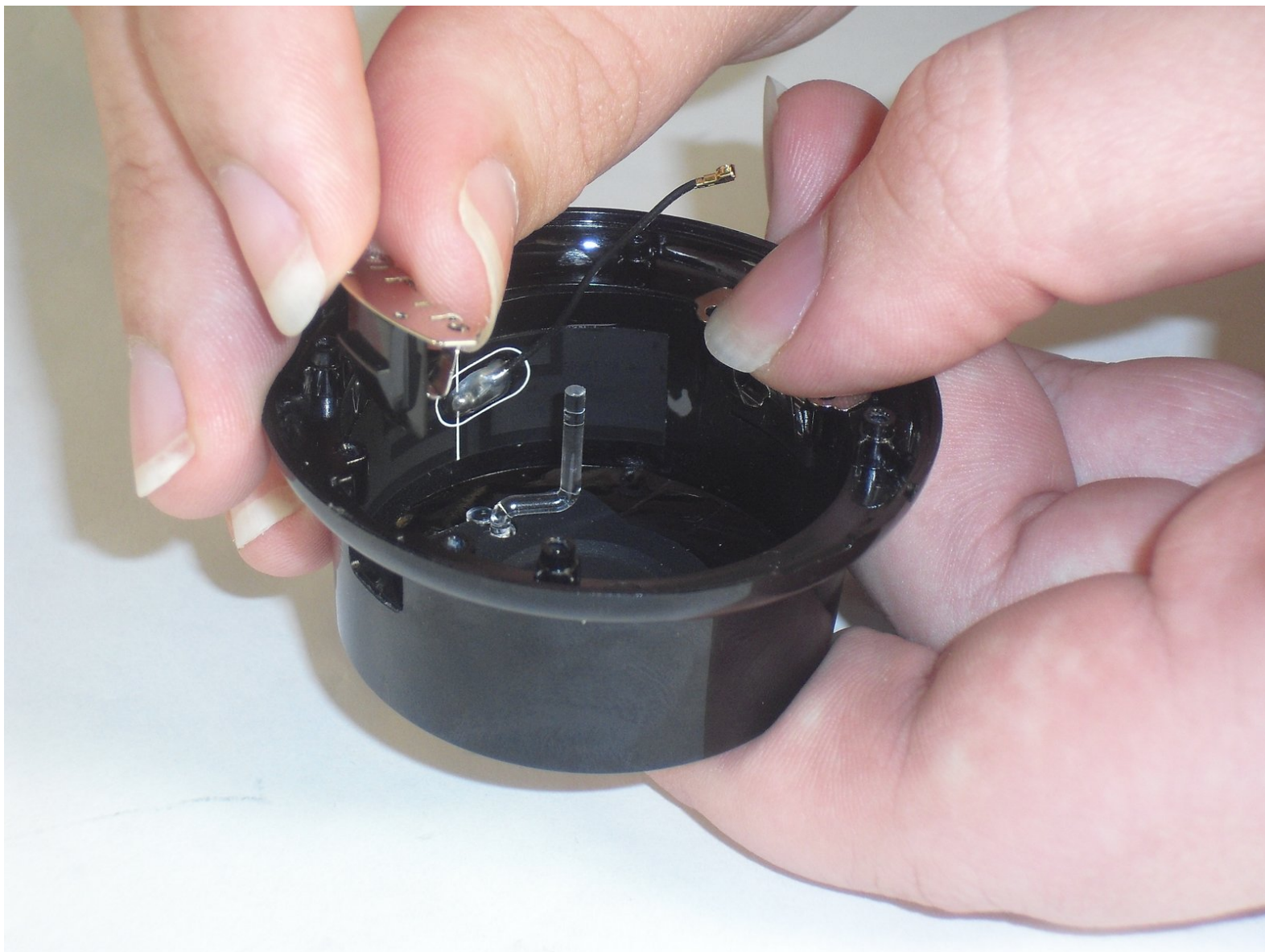




# Nest Dropcam Pro Mounting Clips Replacement

Replace the mounting clips to keep your Nest Dropcam Pro secure in the mount.

Written By: David Foens



---

## INTRODUCTION

This guide is needed to replace the mounting clips if they do not securely hold the camera in its mount. Make sure the device is unplugged before opening.

---



### TOOLS:

- [Phillips #0 Screwdriver](#) (1)
-

## Step 1 — Outer Case



- Press in the mounting clips on each side of the case to remove the camera from the mount.

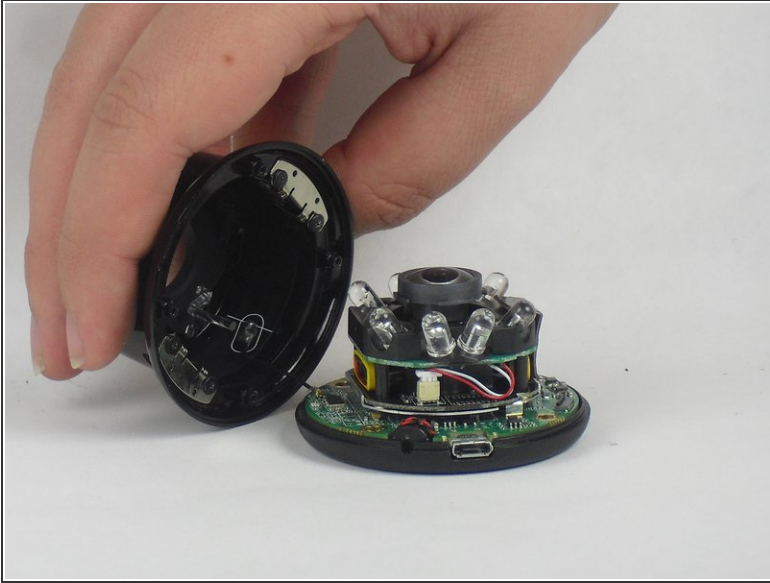
## Step 2



- Using a Philips #0 screwdriver, remove the four 3 mm screws.

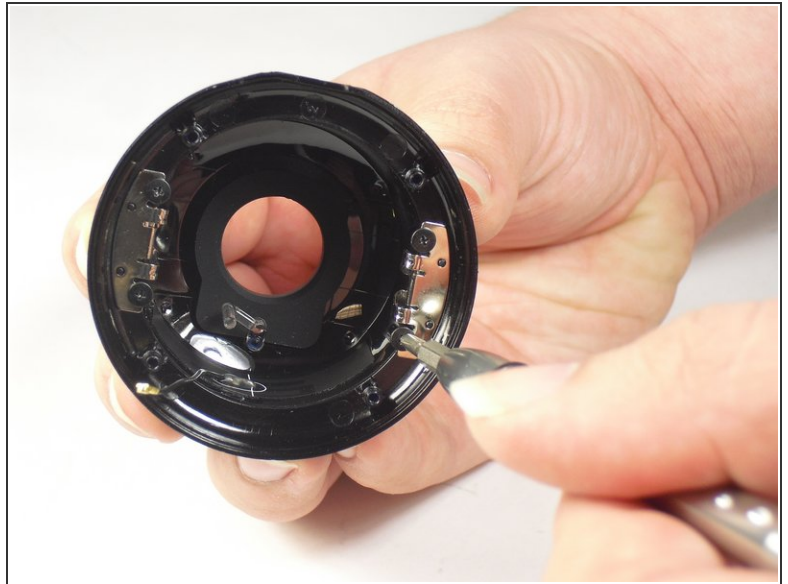


### Step 3



- Lift the front of the case slowly, as there is an antenna cable attached to the motherboard.
- Carefully disconnect the antenna cable from the motherboard. You will feel this cable "pop" out of place when disconnected.

### Step 4 — Mounting Clips



- Using a Philips #0 screwdriver, remove the four 4 mm screws that are attaching the mounting clips to the case.

## Step 5



- Lift the mounting clips away from the case.

To reassemble your device, follow these instructions in reverse order.