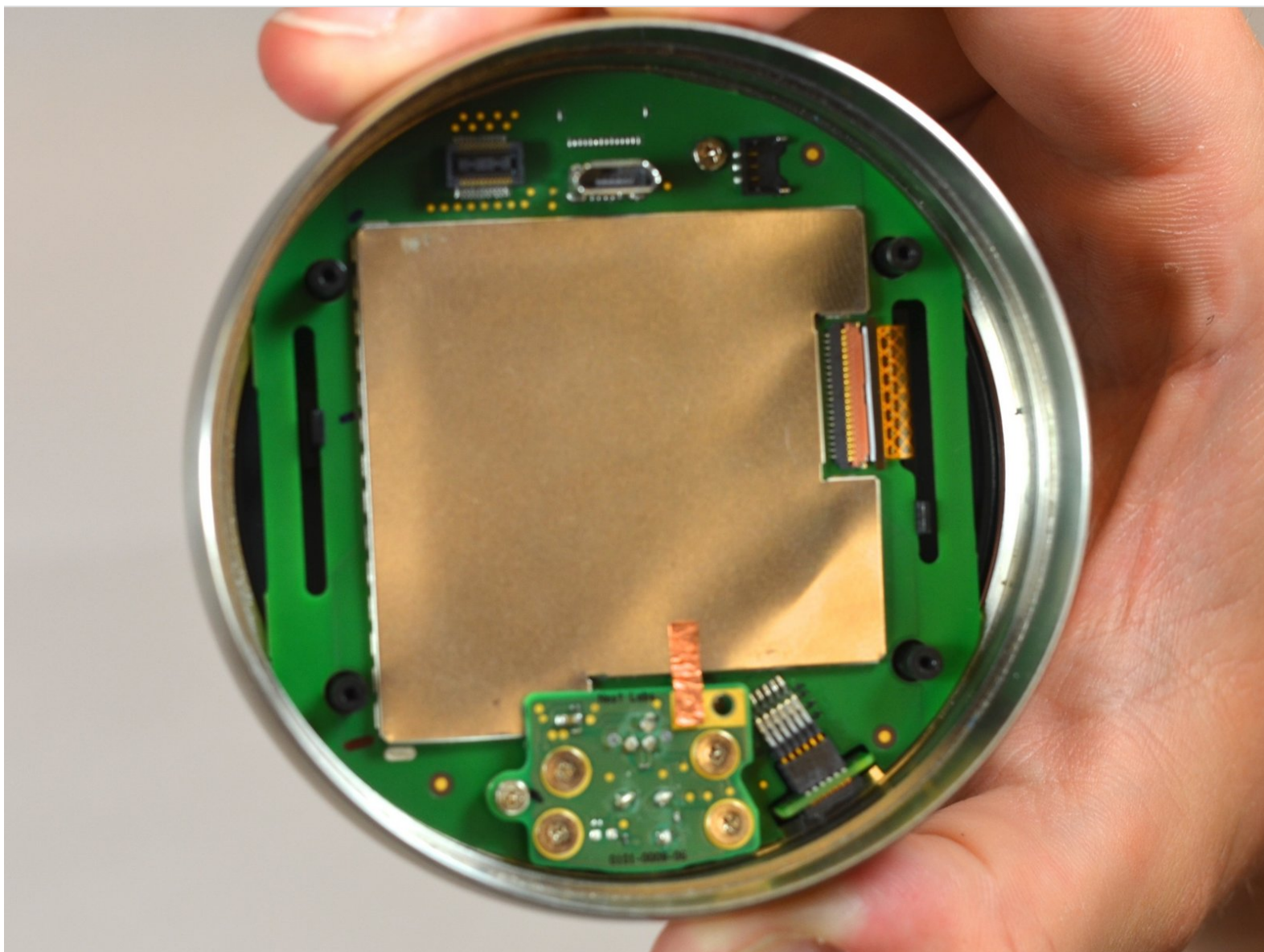




Nest Learning Thermostat 2nd Generation Auto-Away Sensor Replacement

The replacement of the auto-away sensor in the thermostat, is necessary if the Nest will not automatically adjust to temperature. The auto-away sensor detects when people are moving around and will adjust the temperature accordingly.

Written By: Justin Curry



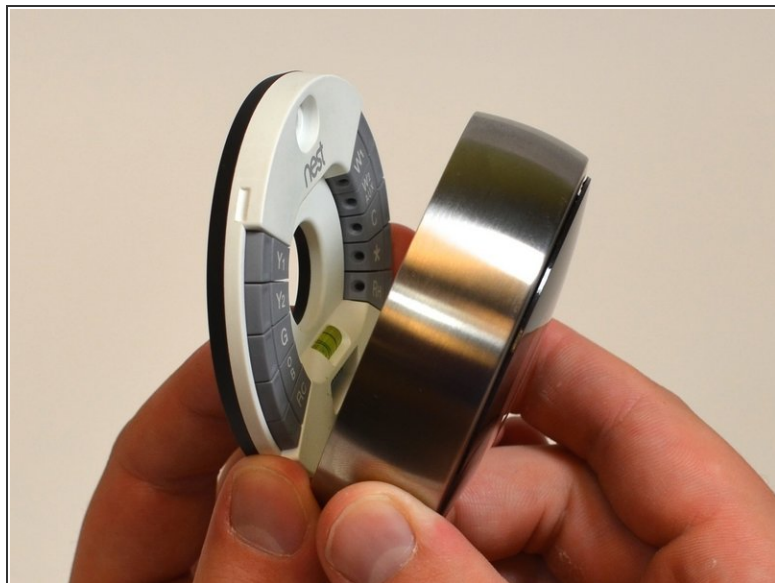
INTRODUCTION

When replacing the auto-away sensor, battery removal is necessary. The battery replacement guide should be a prerequisite before starting. The tools required are tweezers and a Phillips #0 screwdriver.

TOOLS:

- [Phillips #0 Screwdriver](#) (1)
 - [Tweezers](#) (1)
-

Step 1 — Removal from Wall



- Grasp the display's metal outer ring with your fingers and pull directly away from the wall.

Step 2 — Open Display



- Turn the display over.
- Remove the four 6 mm screws from the back of the display using a Phillips #0 screwdriver.

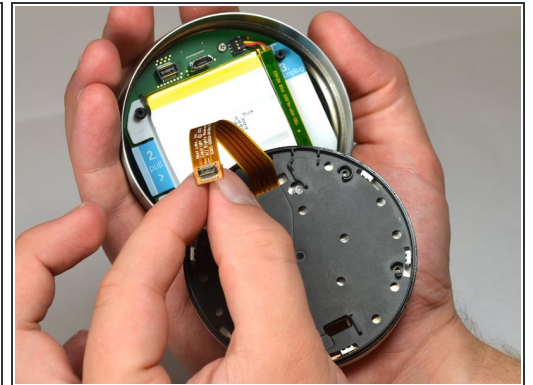
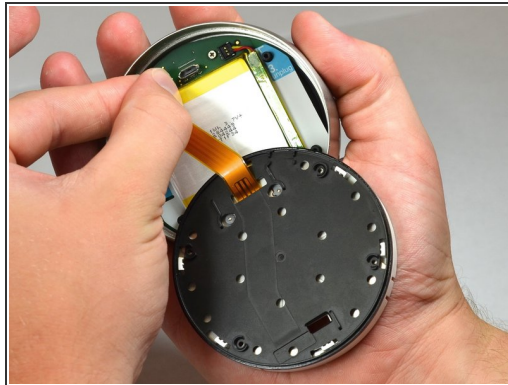
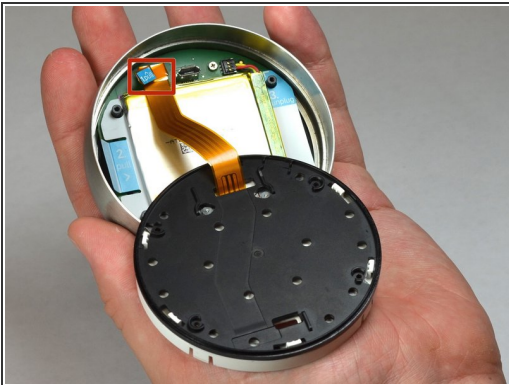
Step 3 — Remove the back of the display



- Pinch the gray 20-pin connector with your fingers and pull directly away from the display.

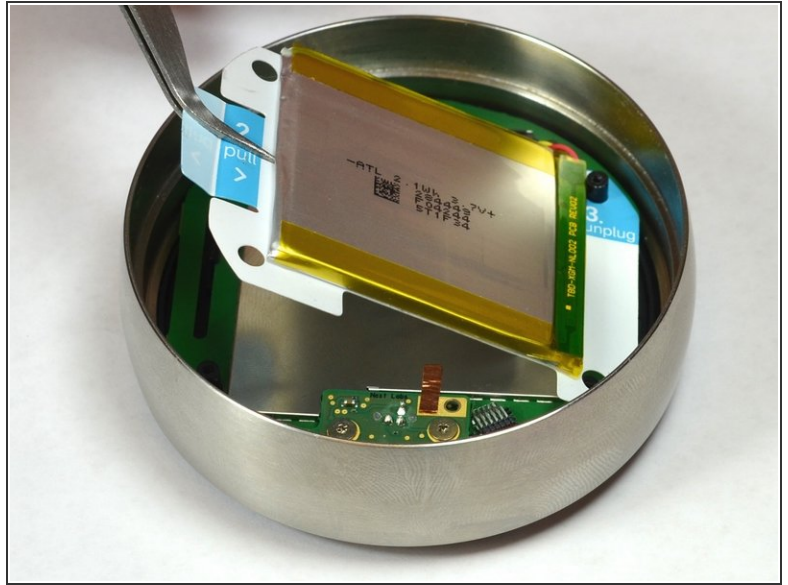
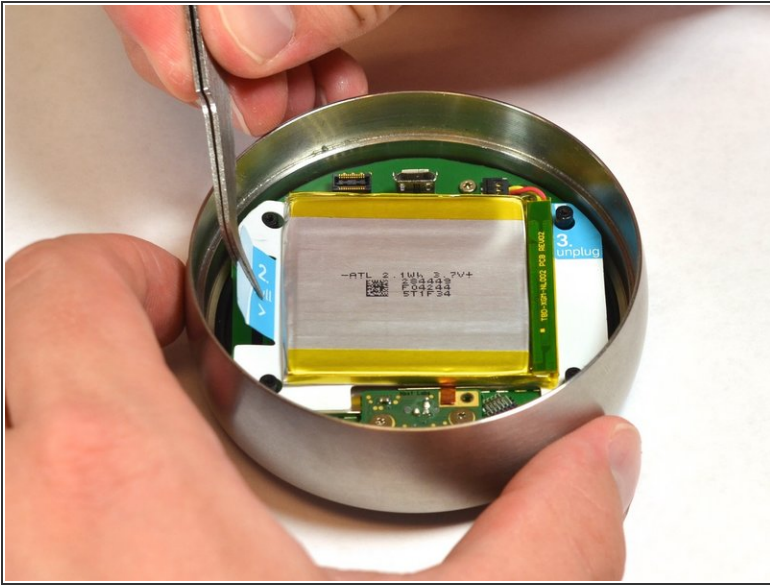
⚠ Do NOT pull too far as there is a ribbon on the back panel connecting the 20-pin connector to the display.

Step 4 — Disconnect the base connection ribbon cable.



- Locate the blue pull tab at the end of the ribbon which says, "1. Pull".
- Grasp the tab with your fingers and pull directly away from the motherboard.

Step 5 — Lift battery from the base



- Locate the blue tab which says, "2. Pull".
- Use tweezers to pull the battery up and away from the display.

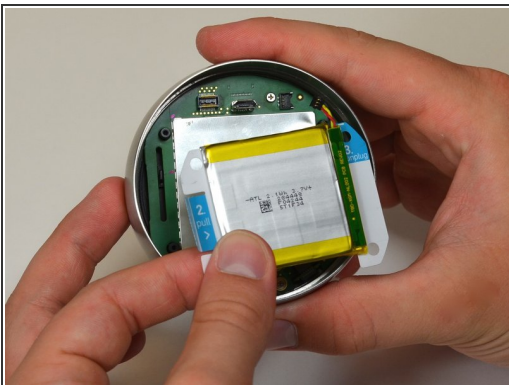
 Do NOT pull too far, as the battery is still connected to the motherboard and must be unplugged.

Step 6 — Disconnect the battery from the motherboard



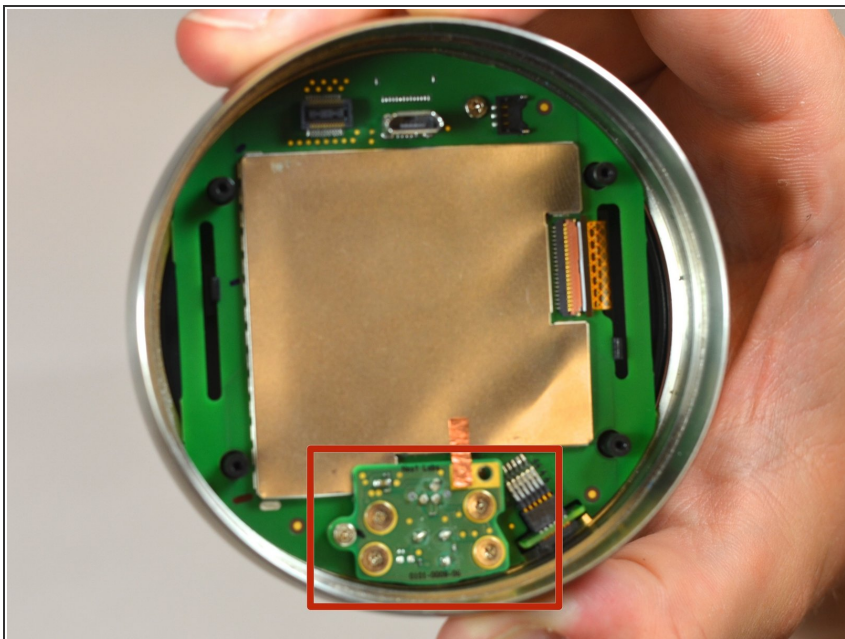
- Locate the blue tab which says "3 unplug".
- Grasp the battery with your fingers. Pull gently directly away from the display to unplug the battery from the motherboard.

Step 7 — Remove battery from the display



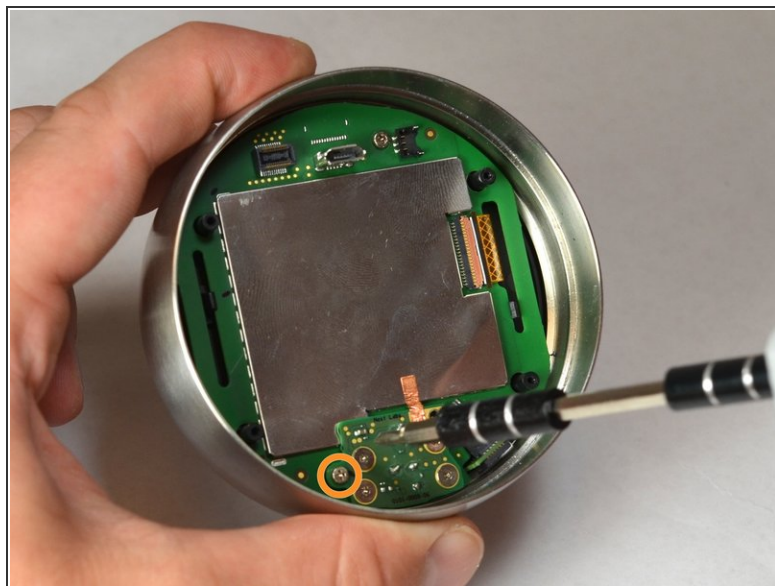
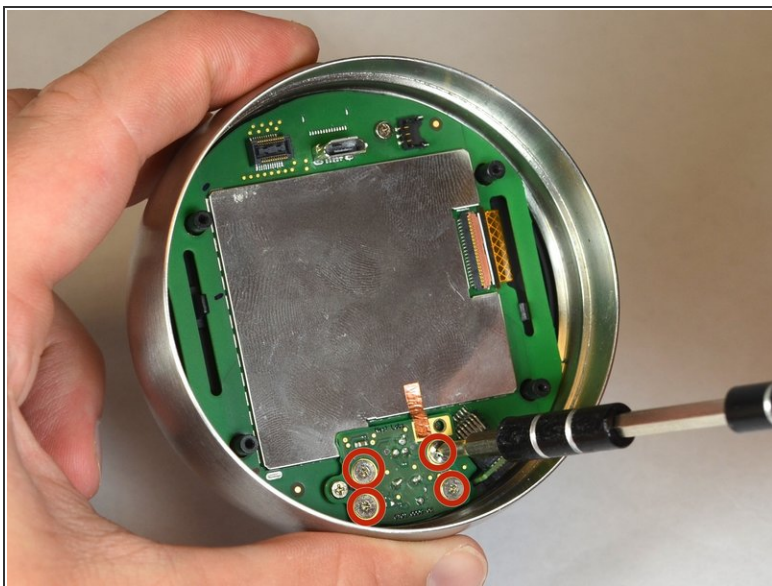
- Grasp the battery with your fingers and pull directly away from motherboard to separate the battery from the display.

Step 8 — Locate auto-away sensor



- Locate the auto-away sensor.

Step 9 — Remove screws



- Remove the four 3mm screws with a #0 Phillips screwdriver.
- Remove the one 4mm screw located at the edge of the auto-away sensor. Use a #0 Phillips screwdriver.

Step 10 — Remove auto-away sensor



- Lift the auto-away sensor from motherboard using tweezers.
- Peel the copper foil gently from the EMI shield.

To reassemble your device, follow these instructions in reverse order.