



Nest Learning Thermostat 2nd Generation Battery Replacement

Replacing your Nest's battery will insure it always has power to spare.

Written By: Dustinluckenbill



INTRODUCTION

Replacing the battery on your Nest couldn't be easier. Removing 4 screws gets you into the Nest's display and the battery comes right out. The only tools required are tweezers and a Phillips #0 screwdriver.



TOOLS:

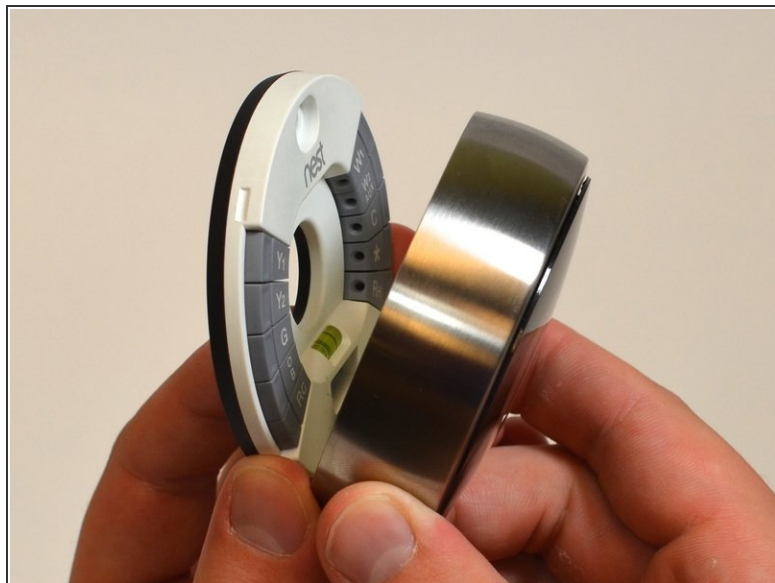
- [Phillips #0 Screwdriver](#) (1)
- [Tweezers](#) (1)



PARTS:

- [Nest Thermostat \(2nd Gen\) Replacement Battery](#) (1)

Step 1 — Removal from Wall



- Grasp the display's metal outer ring with your fingers and pull directly away from the wall.

Step 2 — Open Display



- Turn the display over.
- Remove the four 6 mm screws from the back of the display using a Phillips #0 screwdriver.

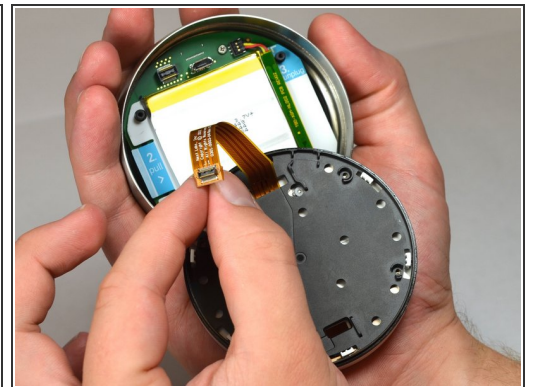
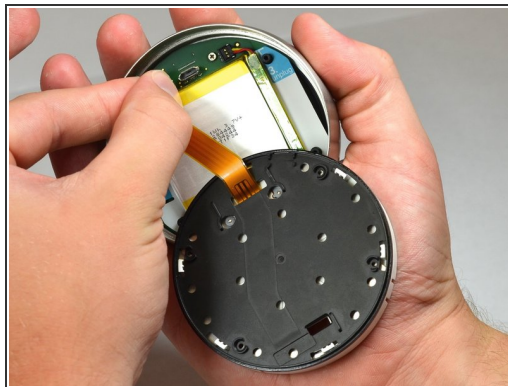
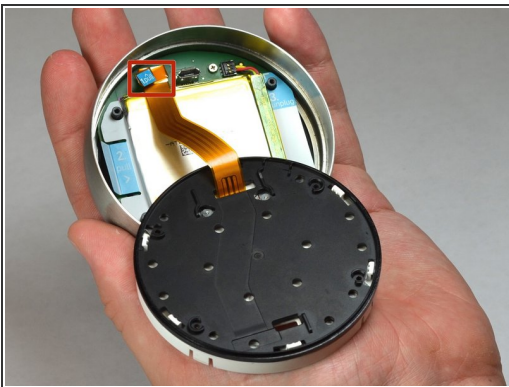
Step 3 — Remove the back of the display



- Pinch the gray 20-pin connector with your fingers and pull directly away from the display.

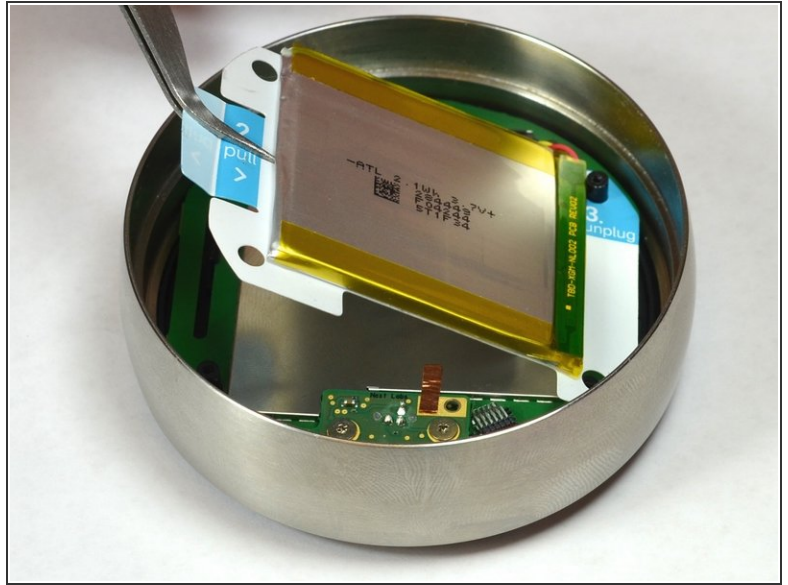
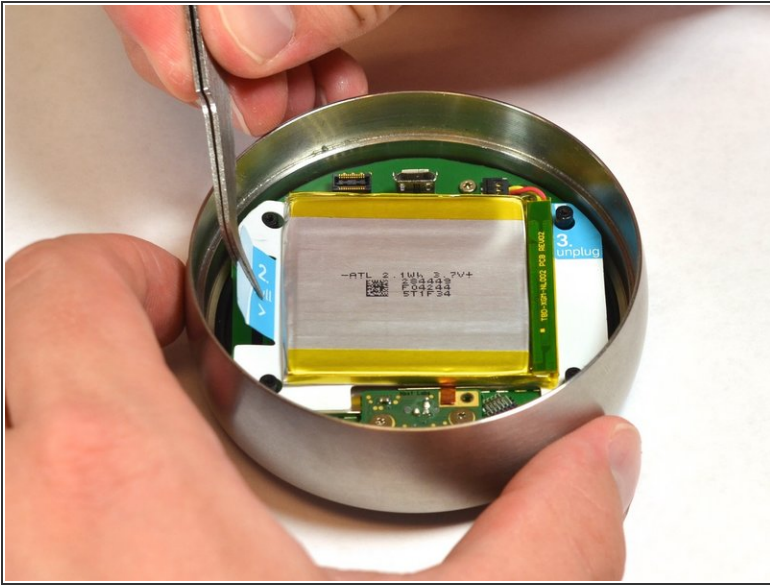
⚠ Do NOT pull too far as there is a ribbon on the back panel connecting the 20-pin connector to the display.

Step 4 — Disconnect the base connection ribbon cable.



- Locate the blue pull tab at the end of the ribbon which says, "1. Pull".
- Grasp the tab with your fingers and pull directly away from the motherboard.

Step 5 — Lift battery from the base



- Locate the blue tab which says, "2. Pull".
- Use tweezers to pull the battery up and away from the display.

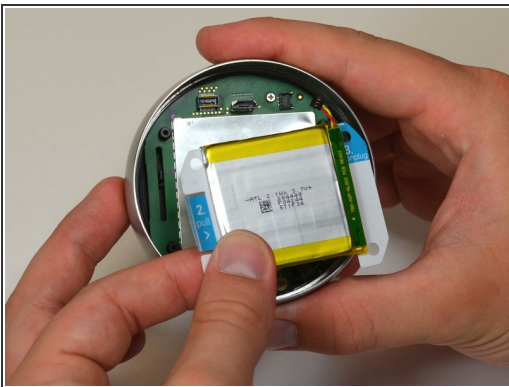
 Do NOT pull too far, as the battery is still connected to the motherboard and must be unplugged.

Step 6 — Disconnect the battery from the motherboard



- Locate the blue tab which says "3 unplug".
- Grasp the battery with your fingers. Pull gently directly away from the display to unplug the battery from the motherboard.

Step 7 — Remove battery from the display



- Grasp the battery with your fingers and pull directly away from motherboard to separate the battery from the display.

To reassemble your device, follow these instructions in reverse order.