



# Netgear Arlo 2 Camera HD Security System SYNC Button Replacement

How to replace a Netgear Arlo 2 Camera HD Security System SYNC button.

Written By: Katherine McCombs



## INTRODUCTION

This guide will explain the process of removing the Sync button on the device. It is important to remember that if you are having connection problems it could be a simple hardware problem. To best use this guide the Phillips 00 screwdriver is recommended. The Phillips 000 or 0 may work as well, please note that the smaller the screwdriver the higher chances of stripping the screw. It is also recommended to have a plastic opening tool (blue) to gently pull the device apart and a bowl or container to keep the small and easily lost screws in.

---

### TOOLS:

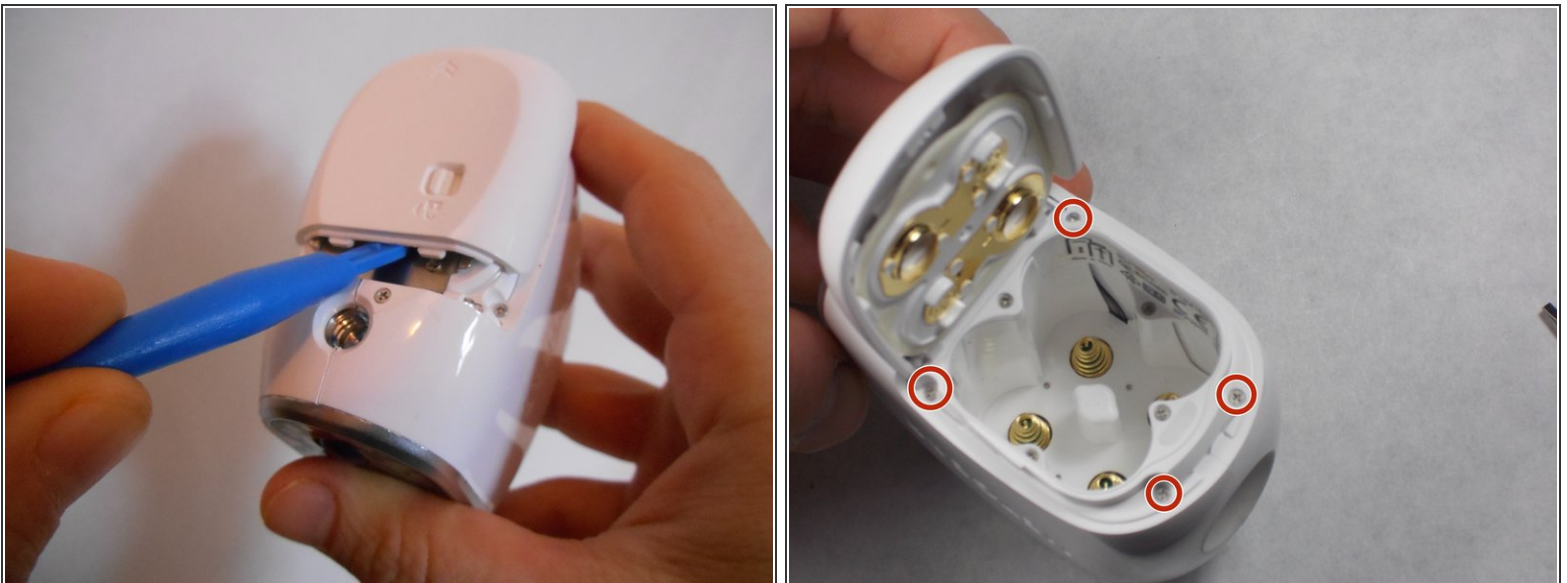
- [Phillips #00 Screwdriver](#) (1)
  - [iFixit Opening Tools](#) (1)
-

## Step 1 — Case



- Unscrew the two 3.0 mm Phillips #00 screws on the bottom of the camera.
- Open the battery compartment on the bottom by pushing the switch marked in orange to the side and pushing the bottom of the camera back, sliding it open.

## Step 2



- Remove the bottom piece of the case over the battery compartment by placing a plastic opening tool underneath the edge of the case and prying it up.
- Unscrew the four 3.0 mm Phillips #00 screws on the outside of the battery pocket.

## Step 3



- When facing the camera lens, the left panel of the case will be removed first (more steps are needed for the right panel).
- Place the plastic opening tool between the two pieces of the case and pry them apart from the bottom.
- Gently pull the side of the case off as it comes loose.



## Step 4



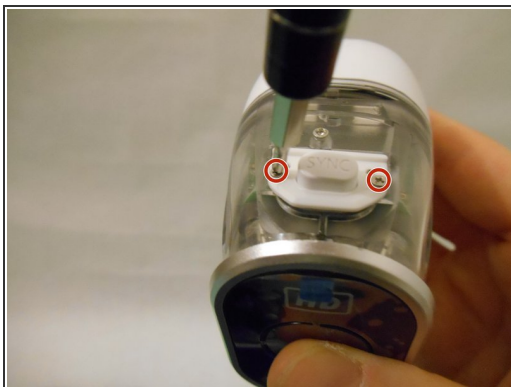
- Unscrew the smaller 3.0 mm Phillips #00 screw in the center on the back of the device.
- Flip the camera over and unscrew the center 3.0 mm Phillips #00 screw above the SYNC button.

## Step 5



- Using the plastic opening tool, gently pry the right panel from the device.
- Replace either side of the plastic case as needed.

## Step 6 — SYNC Button



- Unscrew the two 3.0 mm Phillips #00 screws on either side of the SYNC button.
- Remove the white plastic covering.
- Remove the white SYNC button.

To reassemble your device, follow these instructions in reverse order.