



Netgear ProSAFE GS105 Gigabit Switch Disassembly

This is a teardown of the Netgear ProSAFE GS105 Gigabit Switch.

Written By: Matt Sibley



INTRODUCTION

This guide will help you to take apart your Netgear ProSAFE GS105 Gigabit Switch. Use this guide as a starting point to get into the switch before doing routine maintenance.



TOOLS:

- [Phillips #1 Screwdriver](#) (1)
 - [Phillips #2 Screwdriver](#) (1)
-

Step 1 — Remove screws from rear of device.



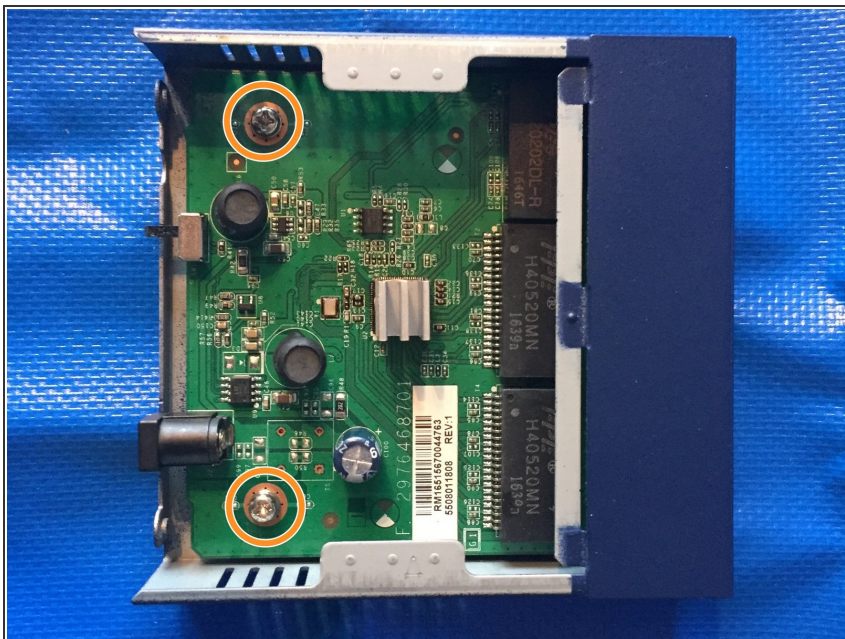
- Remove the two 4.04 mm Phillips Head screws with a PH1 bit or Phillips #1 Screwdriver and set screws aside.

Step 2 — Remove top cover from device.



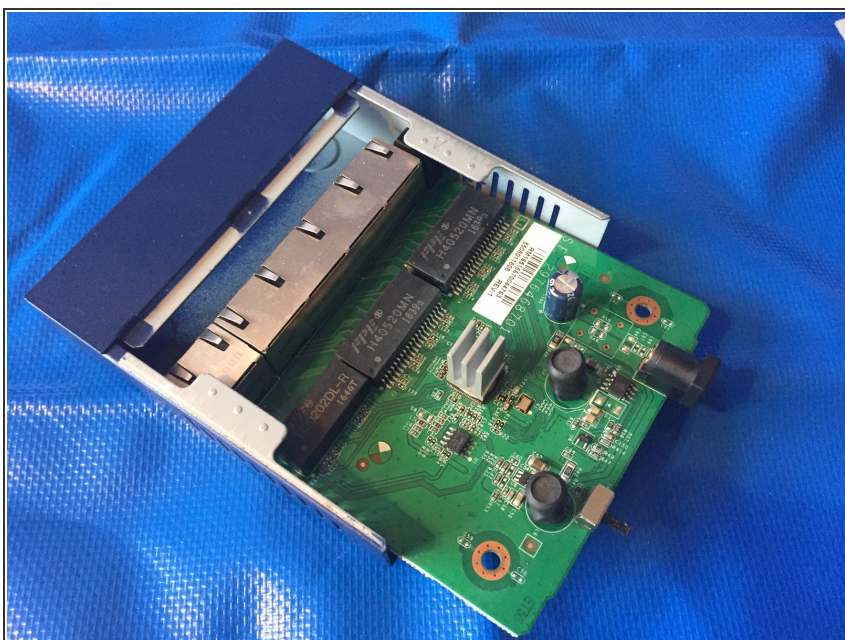
- Use gentle pressure to pull back the top and rear panel of the switch away from the body and set side.

Step 3 — Remove screws holding the board into the case.



- Use your PH2 bit or a Phillips #2 Screwdriver to remove the 6.94mm Phillips Head screws that hold the board into the bottom of the case.
- CAUTION: The screws have two washers on each screw, make use you keep these with the screws.

Step 4 — Remove board from the case.



- Use light pressure to lift the board from the screw standoffs and gently pull backwards to remove the board from the case.
- When reassembling the device make sure you correctly line up the RJ45 ports with the front of the case and the board is properly sitting on the screw standoffs before reinserting the screws.

Step 5 — Decive is disassembled.



- The board has now been removed from the casing and is ready for maintenance or repair.
- In order to put the device back together follow the steps outlined in reverse.

You are now finished!