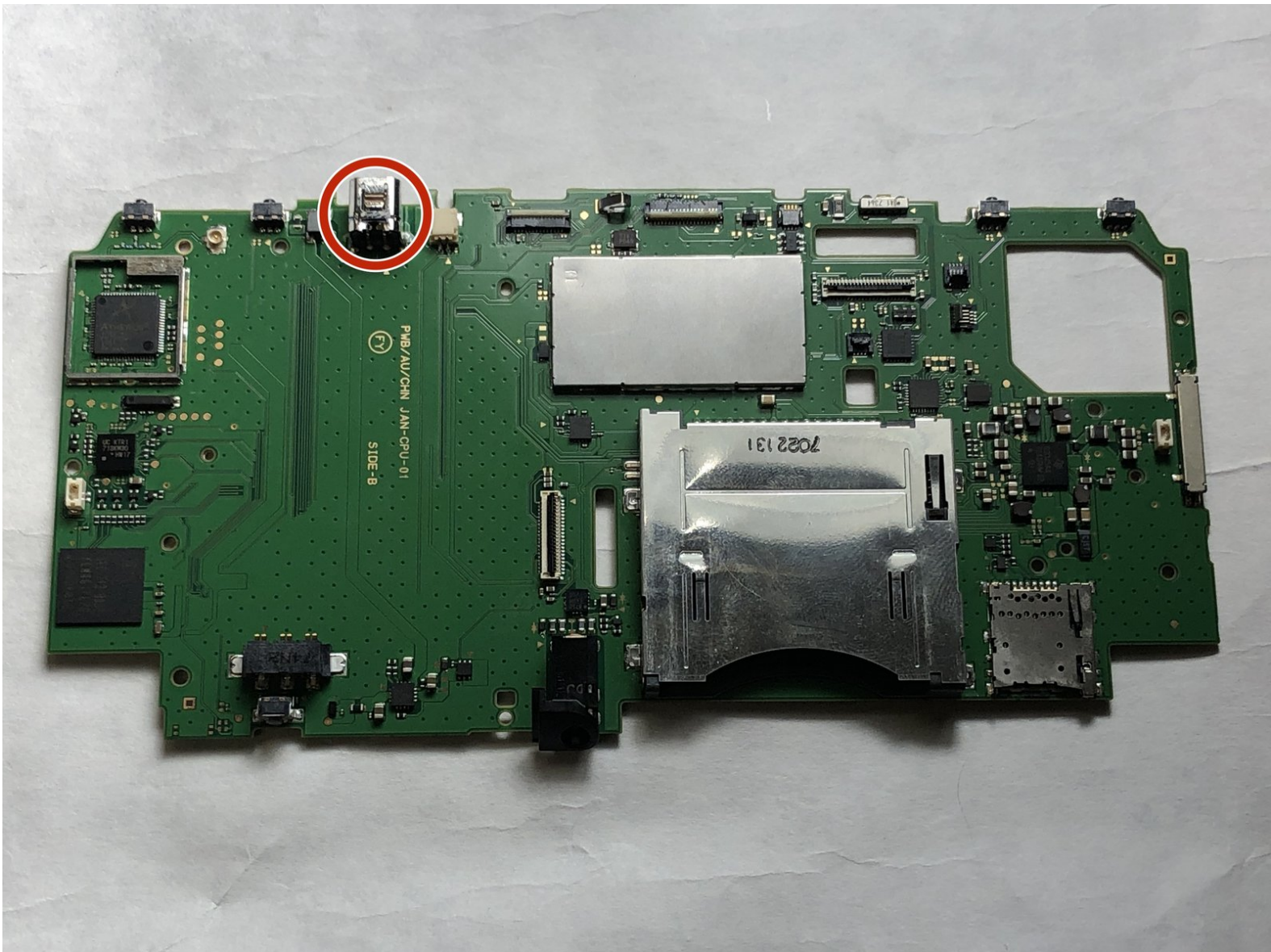




# New Nintendo 2DS XL Charging Port Replacement

Damage to the charging port may render the New Nintendo 2DS XL unusable. This guide assists in the dissassembly and removal of a damaged charging port.

Written By: Aboleee Diwate



## INTRODUCTION

Damage to the charging port of the New Nintendo 2DS XL (MODEL NUMBER) may render the device to eventual power failure. Any poor charging connections or inability to insert the cable into the port may suggest for the removal of the port from the device. This guide offers a suggested course of action in safely removing and replacing the charging port.

Inspect the port for any foreign debris that may be disturbing the connection between charging cable and port. Also, inspect the charging chord to ensure that there is no considerable damage to that may affect its performance. Please ensure that the port is the most possible problem before attempting to remove from the device.

Step 7 does require soldering of three pins that allow for the mounting of the charging port onto the circuit board.

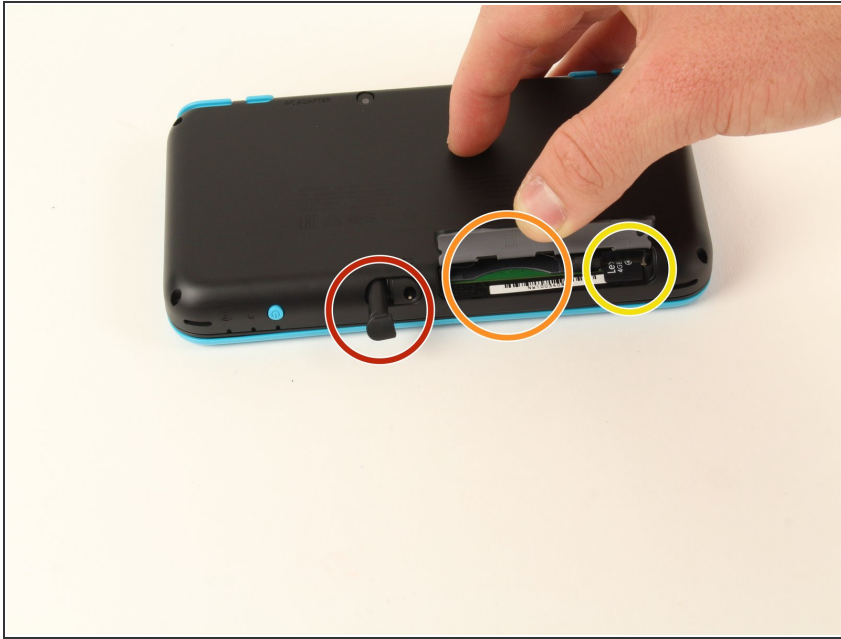
Before beginning disassembly, fully power off the device and disconnect any charging ports or input devices.



### TOOLS:

- [Desoldering Braid](#) (1)
- [Solder](#) (1)
- [Staples](#) (1)
- [Tweezers](#) (1)
- [Spudger](#) (1)
- [Tri-point Y00 Screwdriver Bit](#) (1)
- [Soldering Iron](#) (1)

## Step 1 — Back Cover Removal Preparation



- Before starting the disassembly, remove
  - The stylus
  - Any game cartridge
  - The SD card

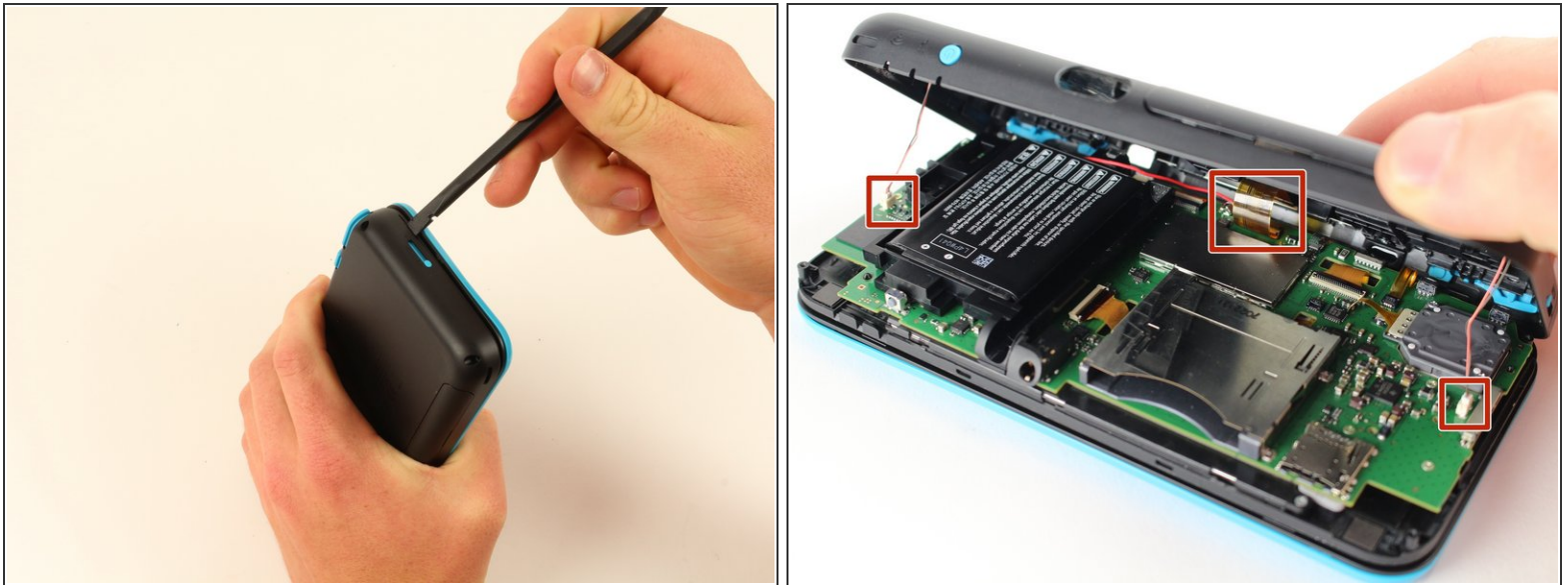
## Step 2 — Back Cover Removal




- Unscrew the four 6mm tri-point screws located at the four corners of the bottom panel.



## Step 3 — Case Separation



 Be careful when separating the bottom panel from the front casing to avoid breaking the three cables connected to the motherboard (two on each side and one in the rear).

- Using a spudger, separate the back panel from the front casing by gently prying around the panel.
- There are many clips along the hinge of the case, so it is recommended to work your way along one short side and the two long sides before finishing the last short side.

## Step 4



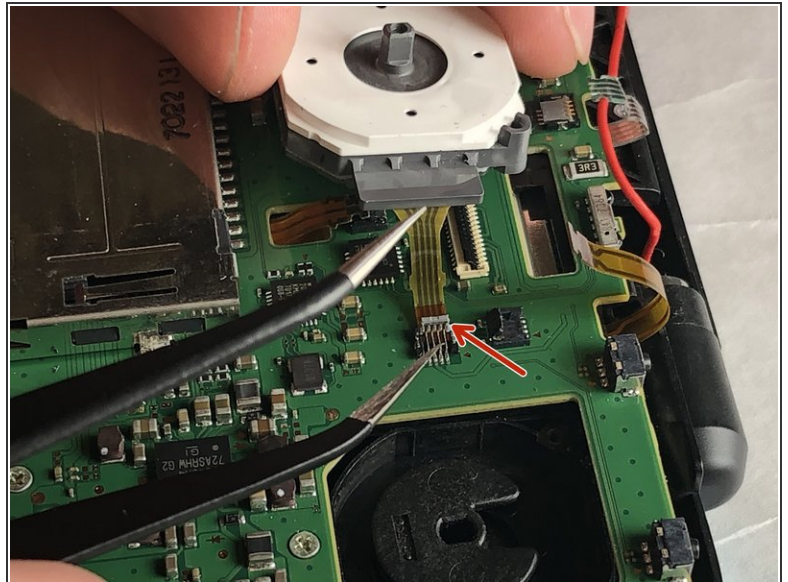
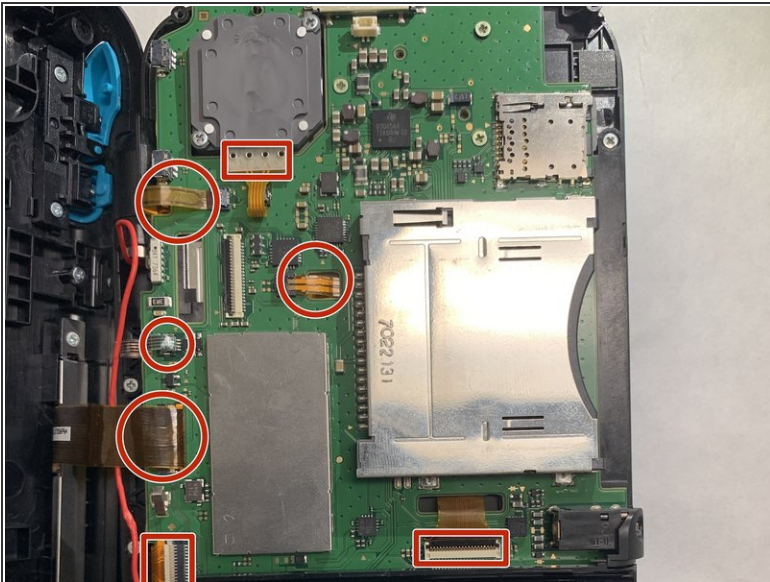
- Using tweezers, disconnect the two cables that connect the rear buttons on either side to the motherboard by gently pulling them upwards.

## Step 5 — Battery Removal



- Using a spudger, lift out the battery.
- Be aware that there is a sticky pad holding the battery into its tray. It may be necessary to use multiple tools to gently pry the battery away from the tray and motherboard.

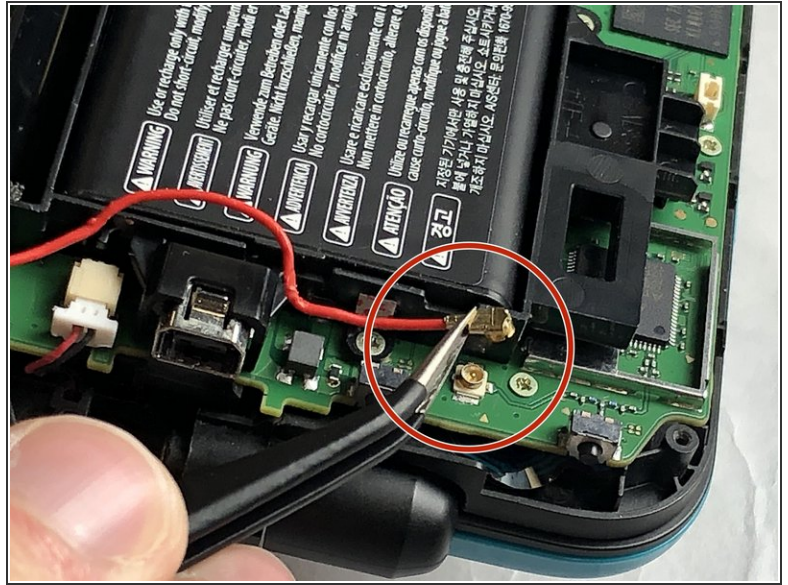
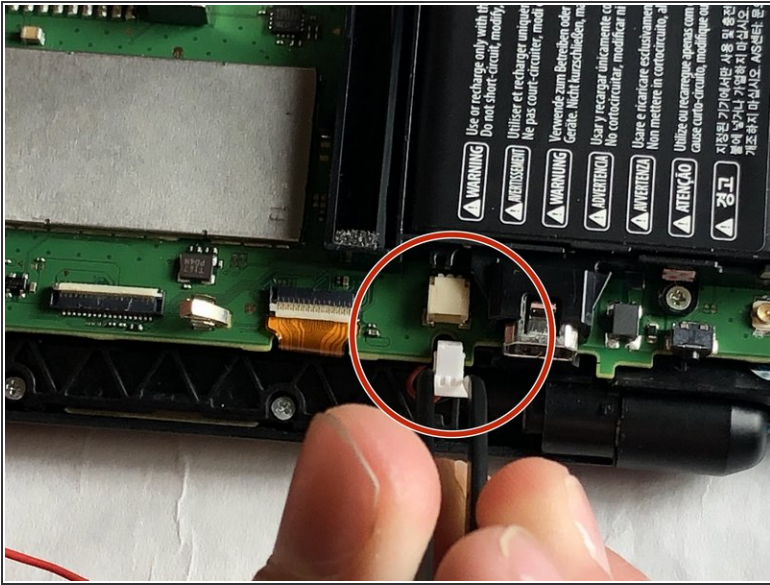
## Step 6 — Motherboard



- There are 7 ribbon cables that need to be removed as shown in the picture. Use a pair of tweezers to flip the latches up and pull the ribbon cable out.

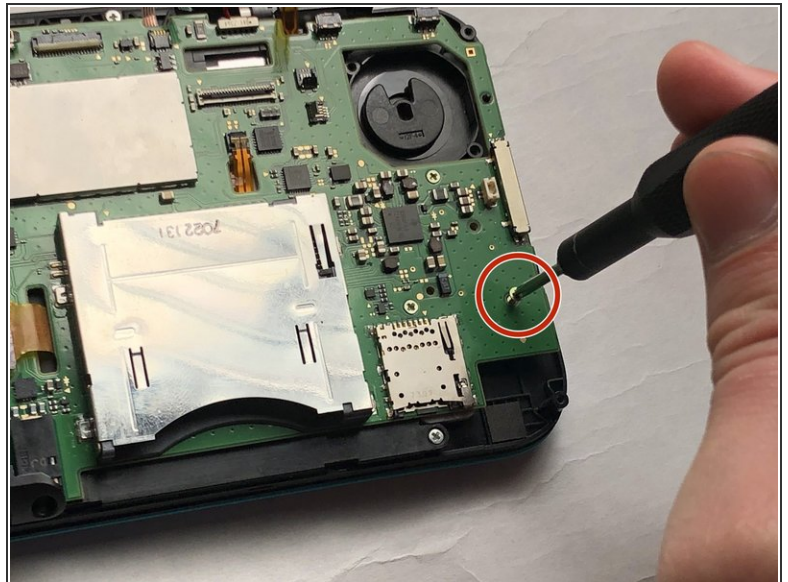
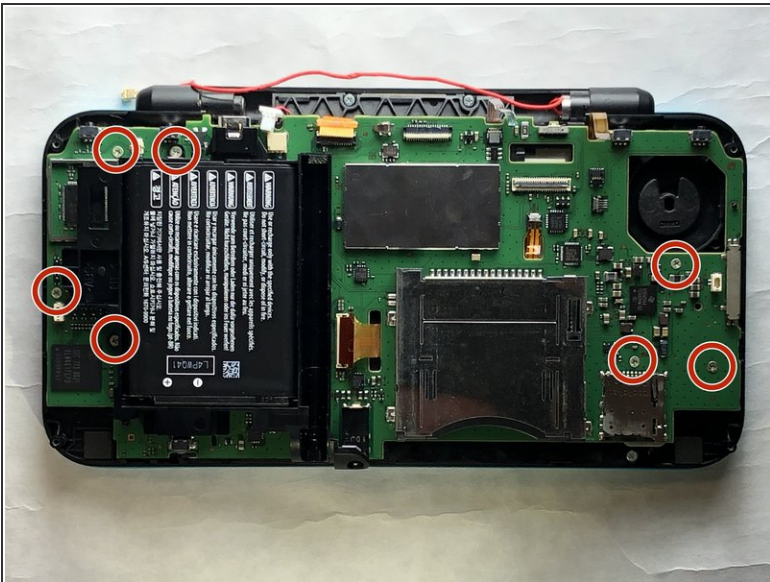


## Step 7



- Unplug the following wires from the motherboard using a pair of tweezers.

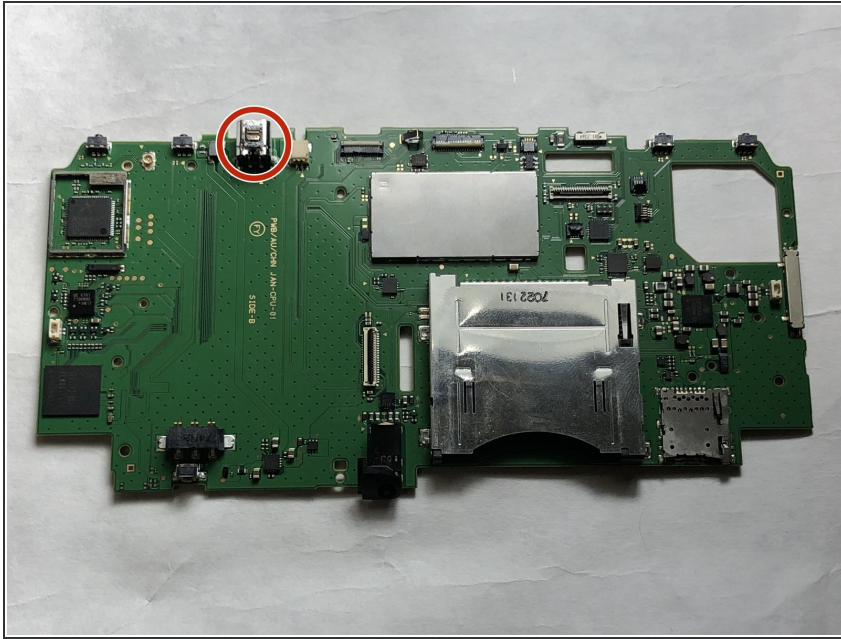
## Step 8



- Remove the following screws using a Tri-point Y00 screwdriver bit.
- Remove the motherboard from the device.

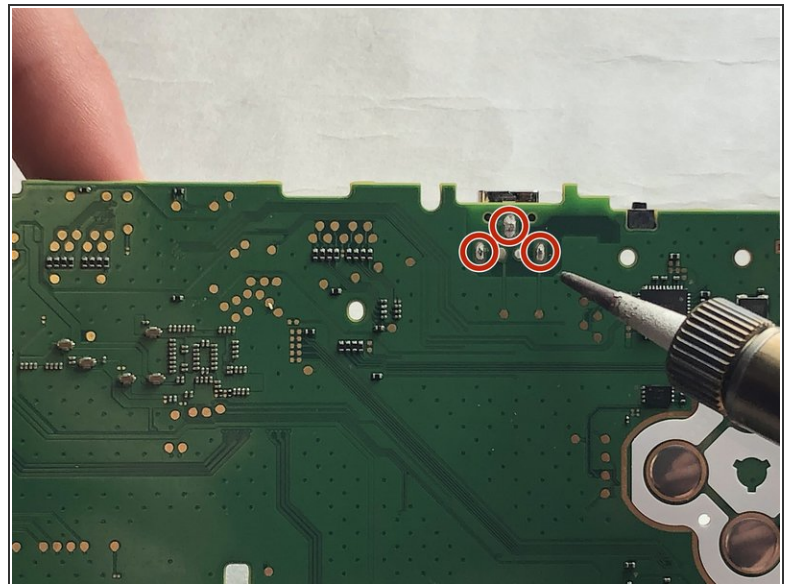
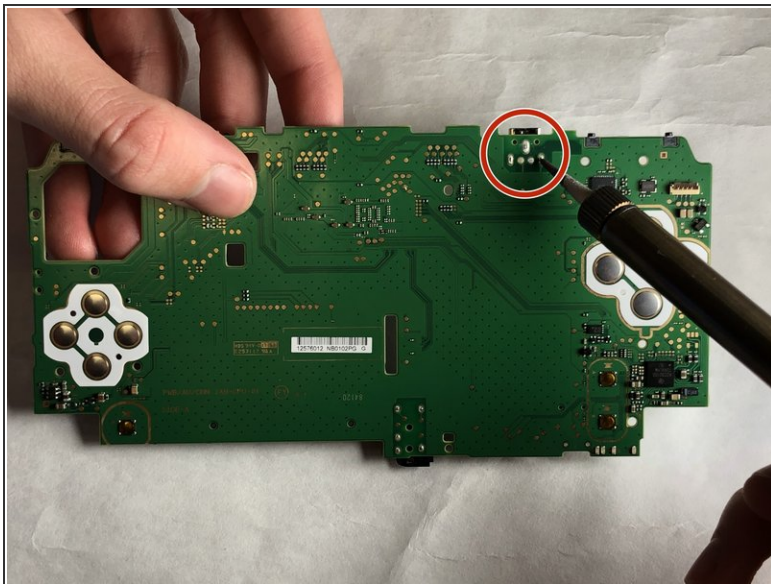


## Step 9 — Charging Port



- Remove the motherboard and locate the charging port. Flip the the motherboard over.

## Step 10



- Identify the three pins that mount the port housing. Begin to desolder these pins using the soldering iron.
- ❗ For more information on soldering connections, please visit the [How to Solder and Desolder Connections guide](#).

To reassemble your device, follow these instructions in reverse order.