



New Nintendo 2DS XL Front Buttons Replacement

This guide will allow you to reach and replace the front buttons of your New Nintendo 2DS XL.

Written By: Tim Newman



INTRODUCTION

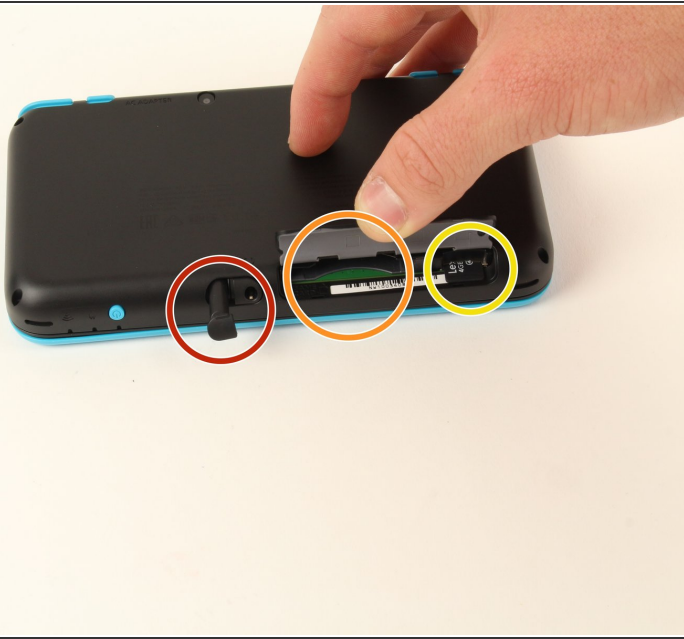
This guide provides the procedure for replacing the front buttons on the device. To access the front buttons, the device case needs to be opened. The process of opening the device might be intimidating at first, but the proper precautions are outlined in the guide. No device damage is expected if the guide steps are followed. For more information, refer to our [troubleshooting page](#).



TOOLS:

- [Tri-point Y0 Screwdriver](#) (1)
 - [Tweezers](#) (1)
 - [Spudger](#) (1)
 - [Phillips PH000 Screwdriver](#) (1)
-

Step 1 — Back Cover Removal Preparation



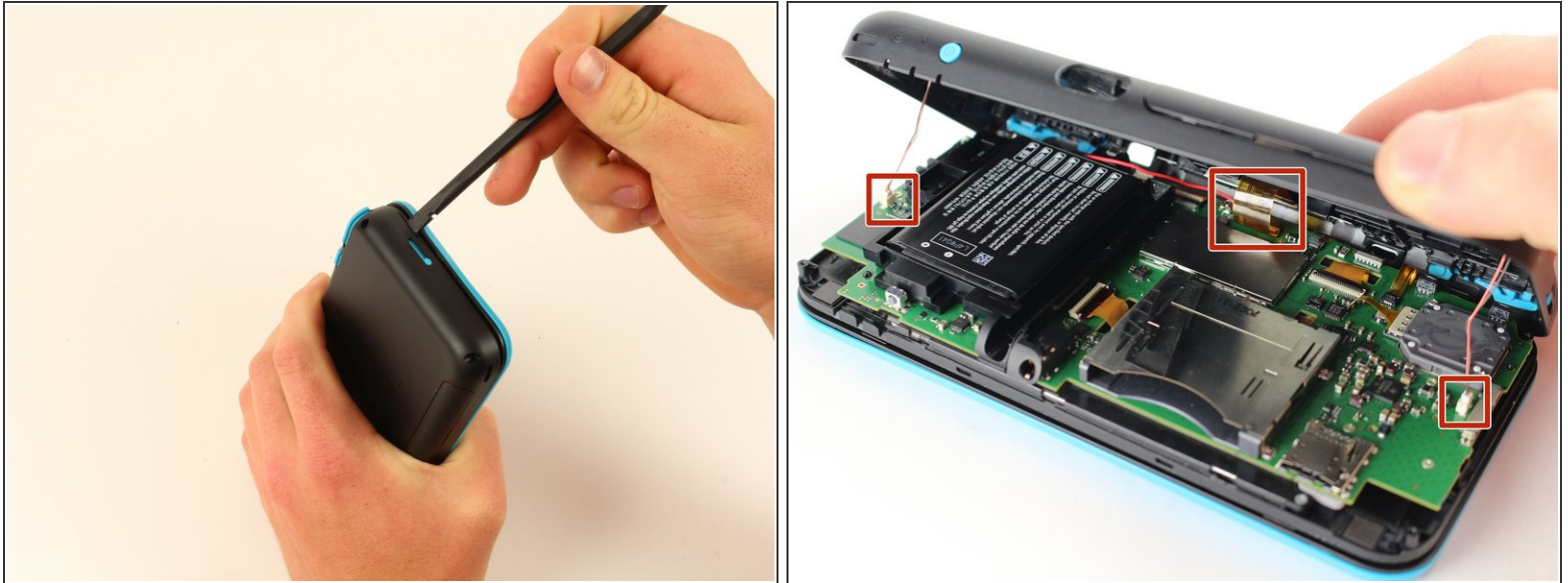
- Before starting the disassembly, remove
 - The stylus
 - Any game cartridge
 - The SD card


Step 2 — Back Cover Removal



- Unscrew the four 6mm tri-point screws located at the four corners of the bottom panel.

Step 3 — Case Separation



 Be careful when separating the bottom panel from the front casing to avoid breaking the three cables connected to the motherboard (two on each side and one in the rear).

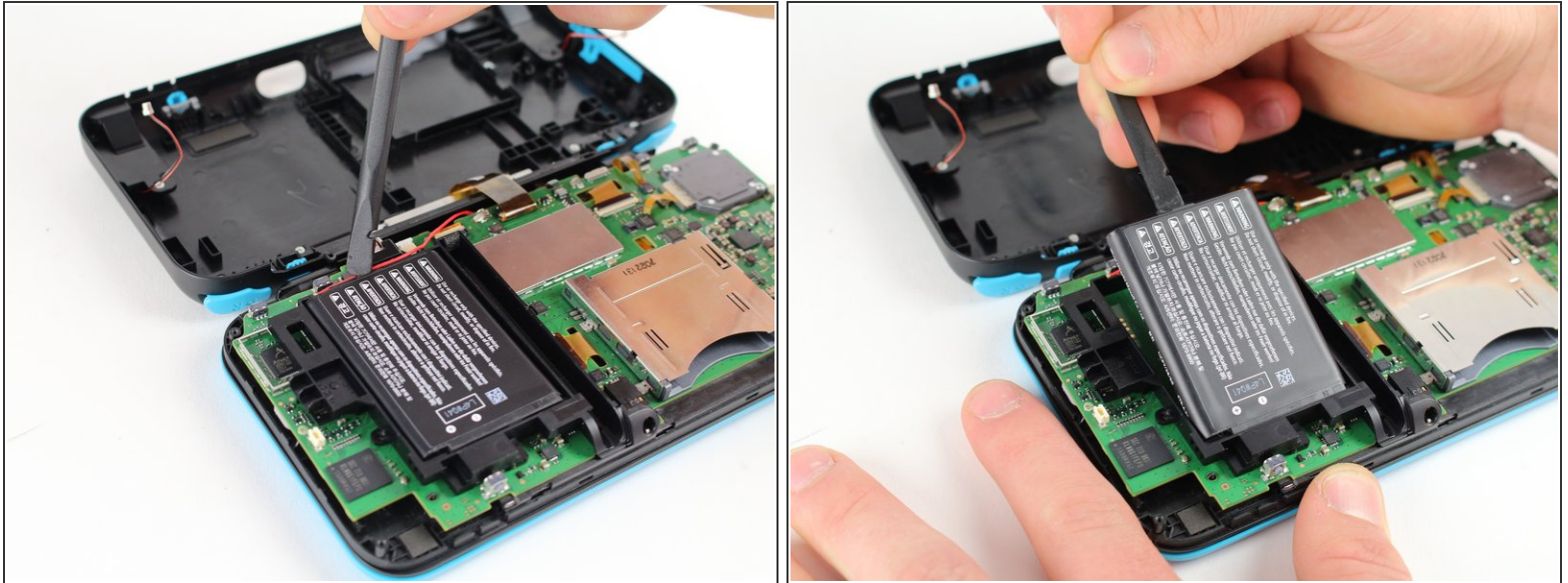
- Using a spudger, separate the back panel from the front casing by gently prying around the panel.
- There are many clips along the hinge of the case, so it is recommended to work your way along one short side and the two long sides before finishing the last short side.

Step 4



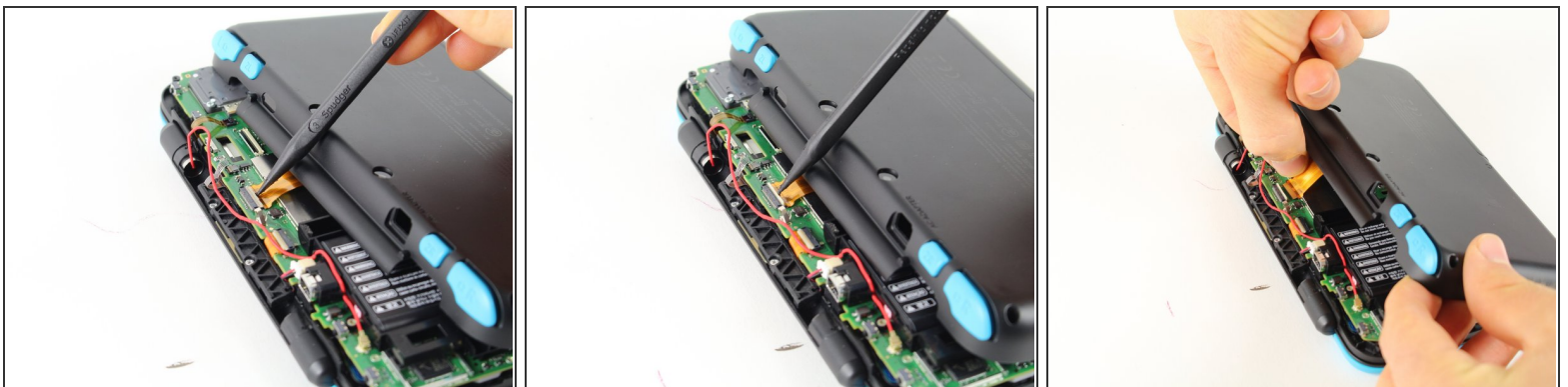
- Using tweezers, disconnect the two cables that connect the rear buttons on either side to the motherboard by gently pulling them upwards.

Step 5 — Battery Removal



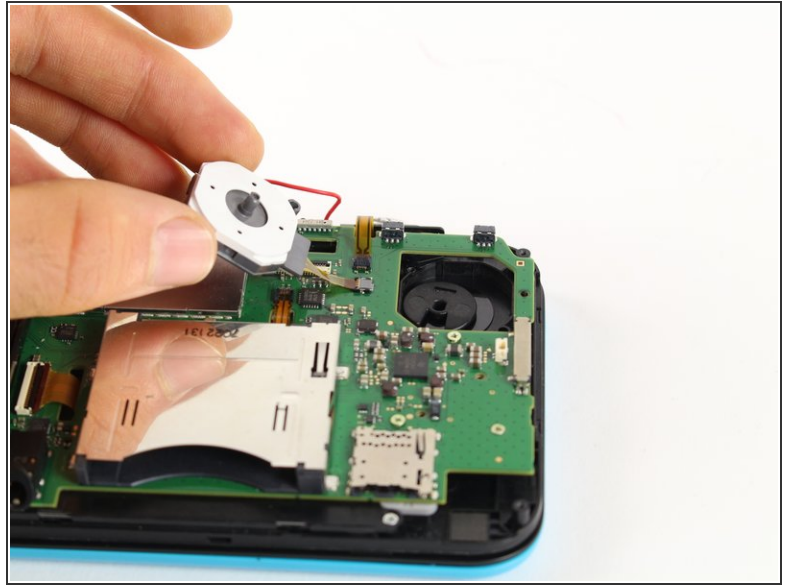
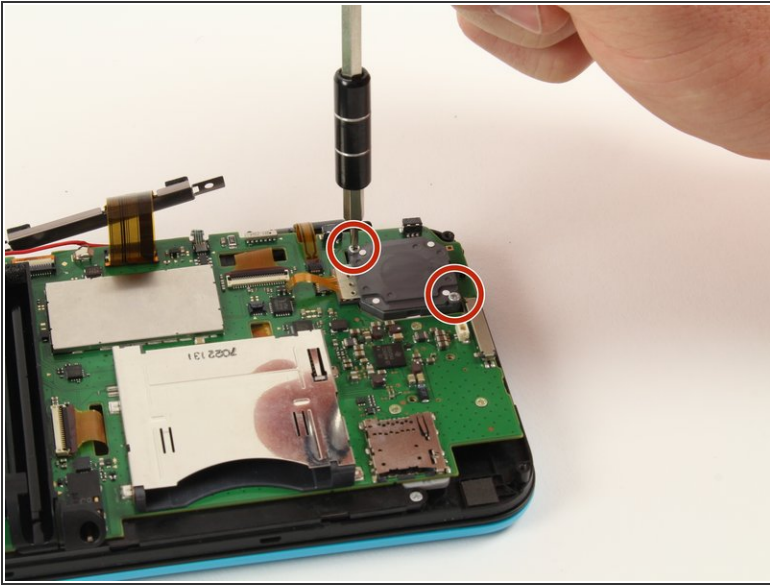
- Using a spudger, lift out the battery.
- Be aware that there is a sticky pad holding the battery into its tray. It may be necessary to use multiple tools to gently pry the battery away from the tray and motherboard.

Step 6 — Camera Modules



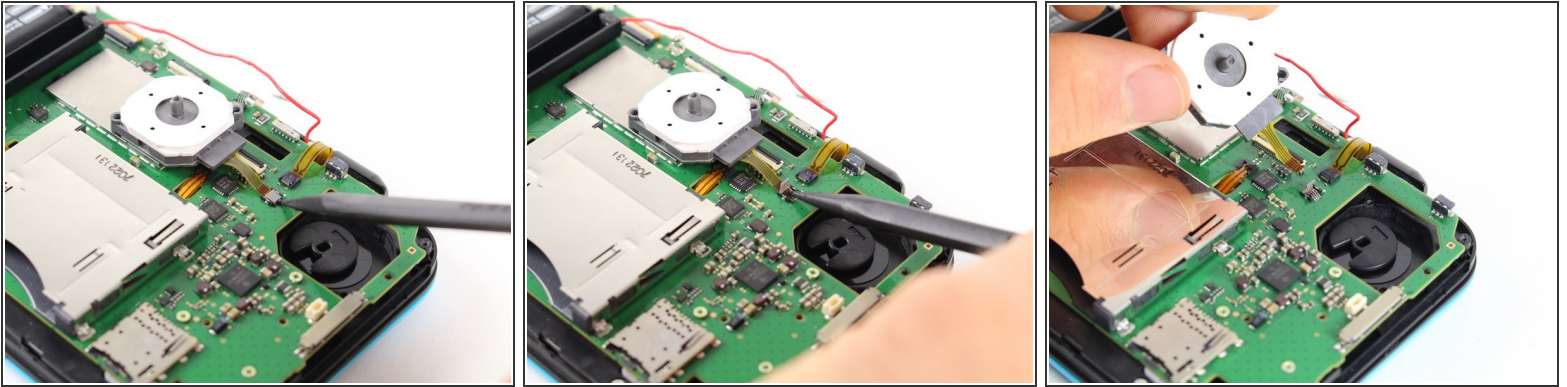
- To more easily access this ribbon cable, flip the device so the back casing faces upwards. Gently slide the back casing forward, revealing the ribbon cable connecting to the motherboard.
- Using a spudger, pry up the ZIF connector holding the ribbon cable.
- Pull the ribbon towards the bottom casing and out of the connector.

Step 7 — Circle Pad



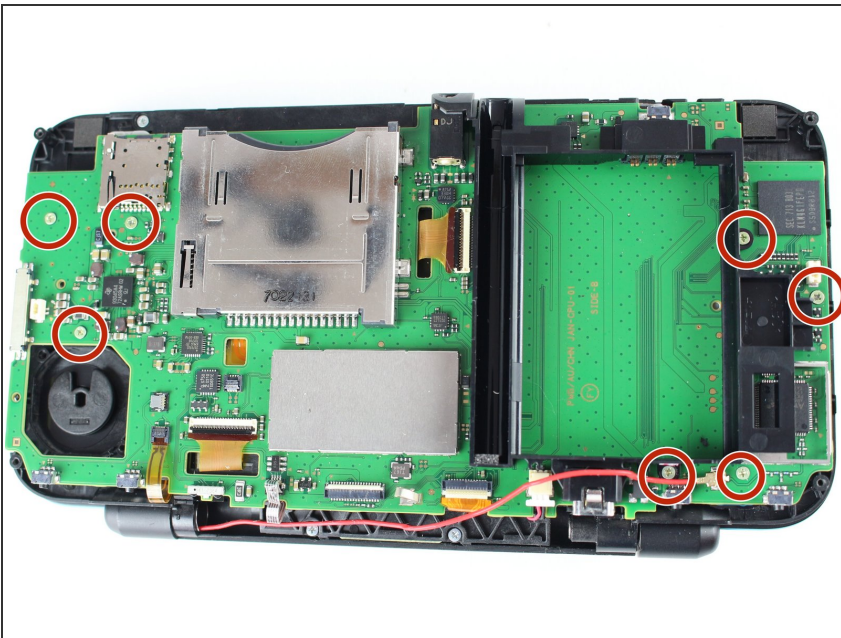
- Remove the two 7.5mm phillips screws using a PH000 screwdriver.
- Gently flip over the circle pad. Be aware that the pad is pressed into the back of the circle pad on the front of the case. Gentle prying will be necessary to pry it from the back of the circle pad.
- Be aware that there is a black plastic disc that sits between the circle pad module and the circle pad stick. During reassembly, stand the unit on end and hang the plastic disc on the circle pad module and hold the stick from the front to press them back together.

Step 8



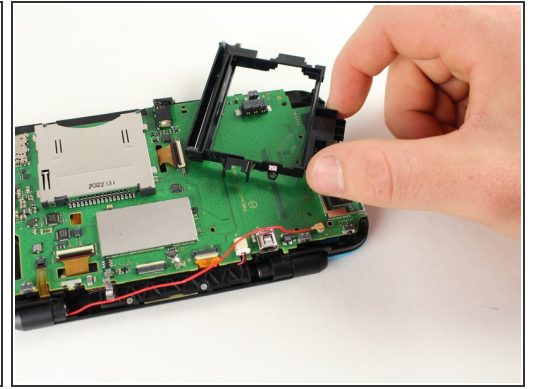
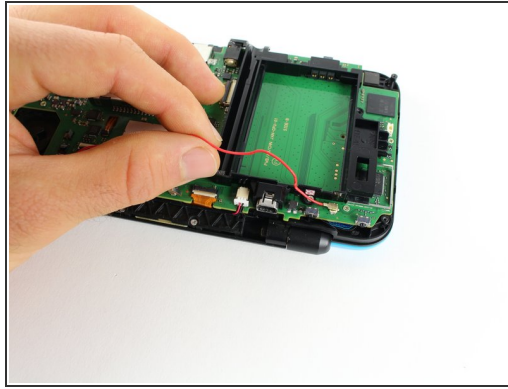
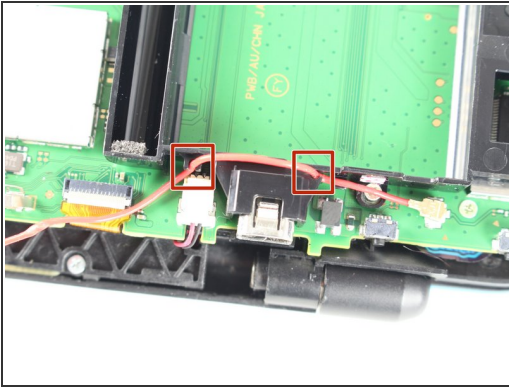
- Using a spudger, lift up the ZIF connector (the hinge is located on the side closest to where the cable connects).
- Remove the circle pad by pulling it away from the connector.

Step 9 — Motherboard Removal



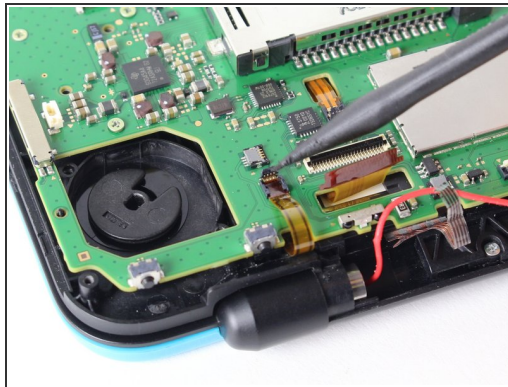
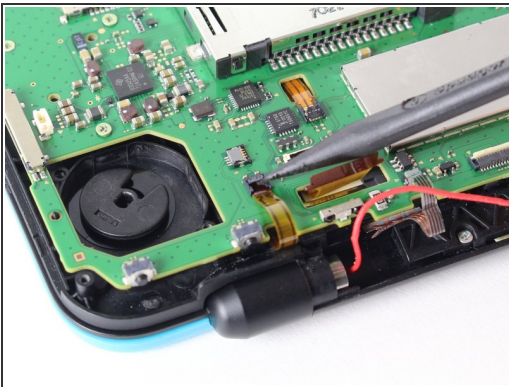
- Remove the seven 3.5mm phillips screws holding down the motherboard using a PH000 screwdriver.

Step 10



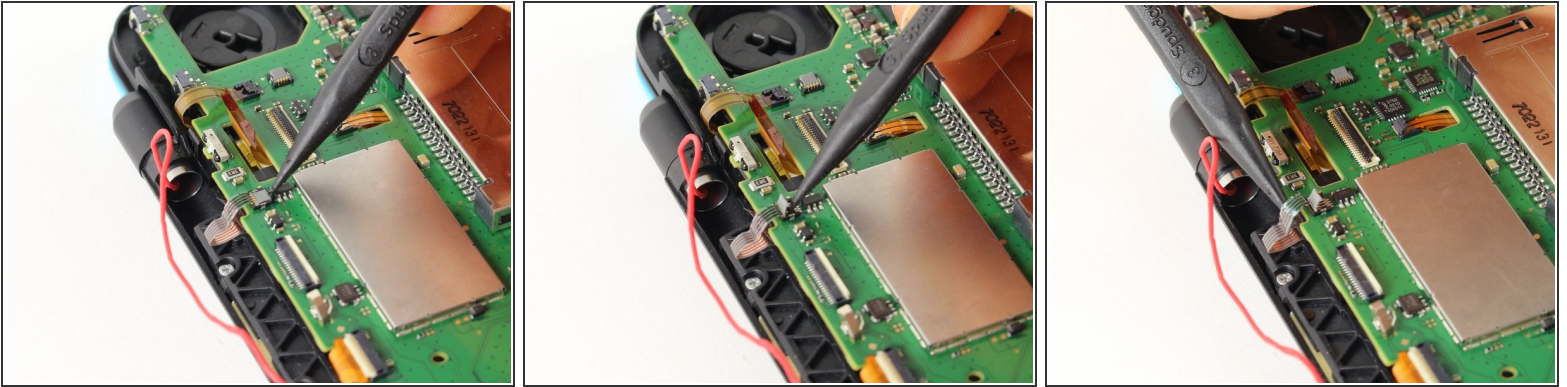
- Remove the wire attached to the battery housing.
- Remove the battery housing by lifting it away from the charging port.

Step 11



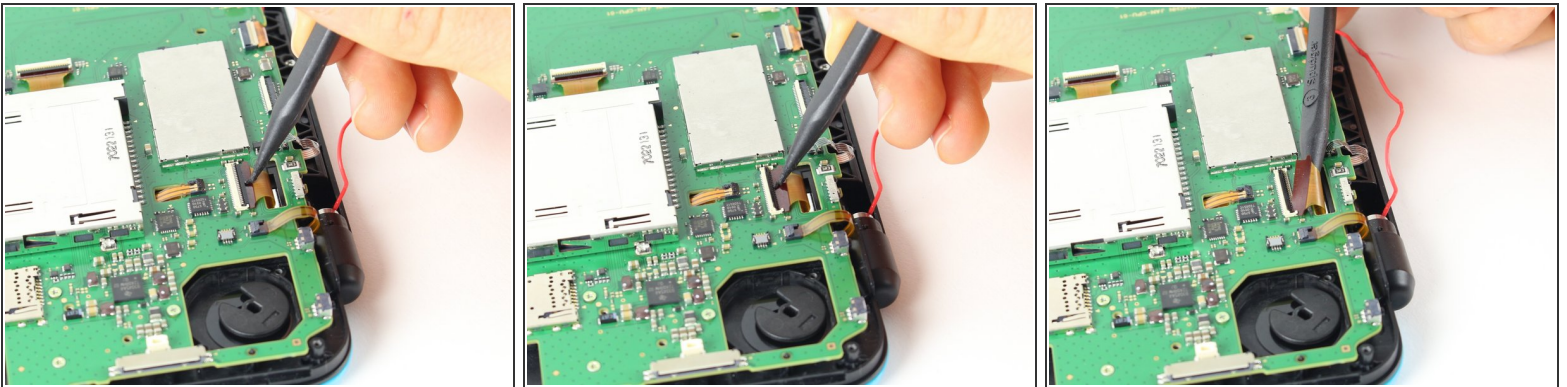
- Using a spudger, lift up the small ZIF connector next to the circle pad's connector.
- Gently pull the ribbon cable out from the connector.

Step 12



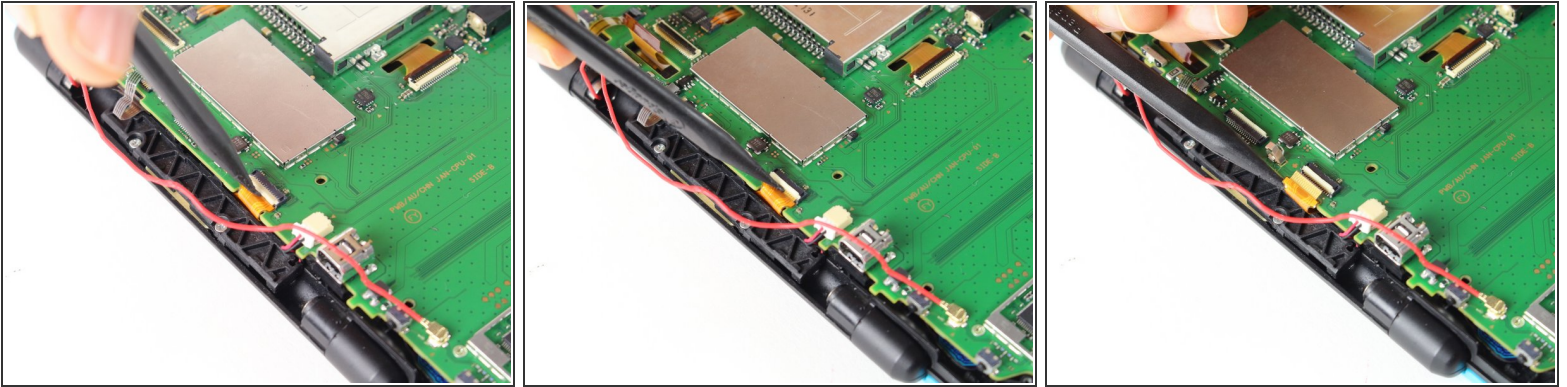
- Pry up the grey ZIF connector holding the small silver ribbon cable.
- Gently pull the ribbon cable out of the connector.

Step 13



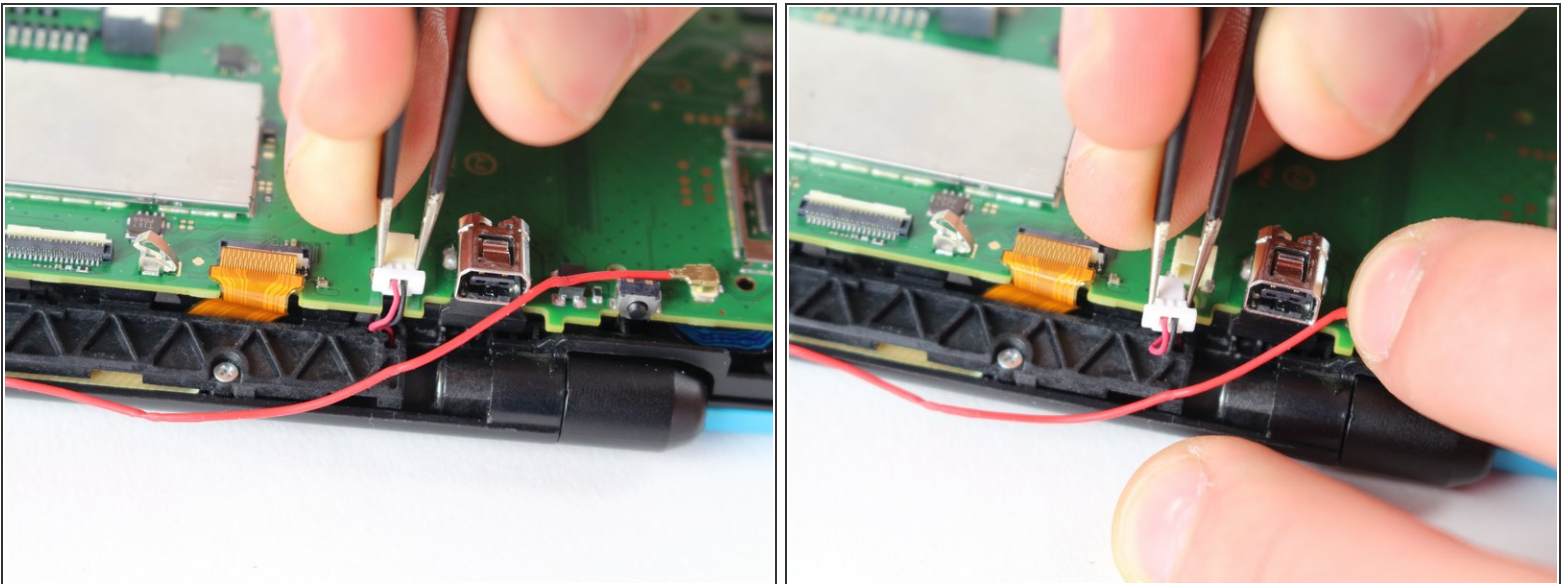
- Lift up the ZIF connector holding down the wide bronze ribbon cable that goes through the motherboard near the hinge.
- Gently pull the ribbon cable out from the connector.

Step 14



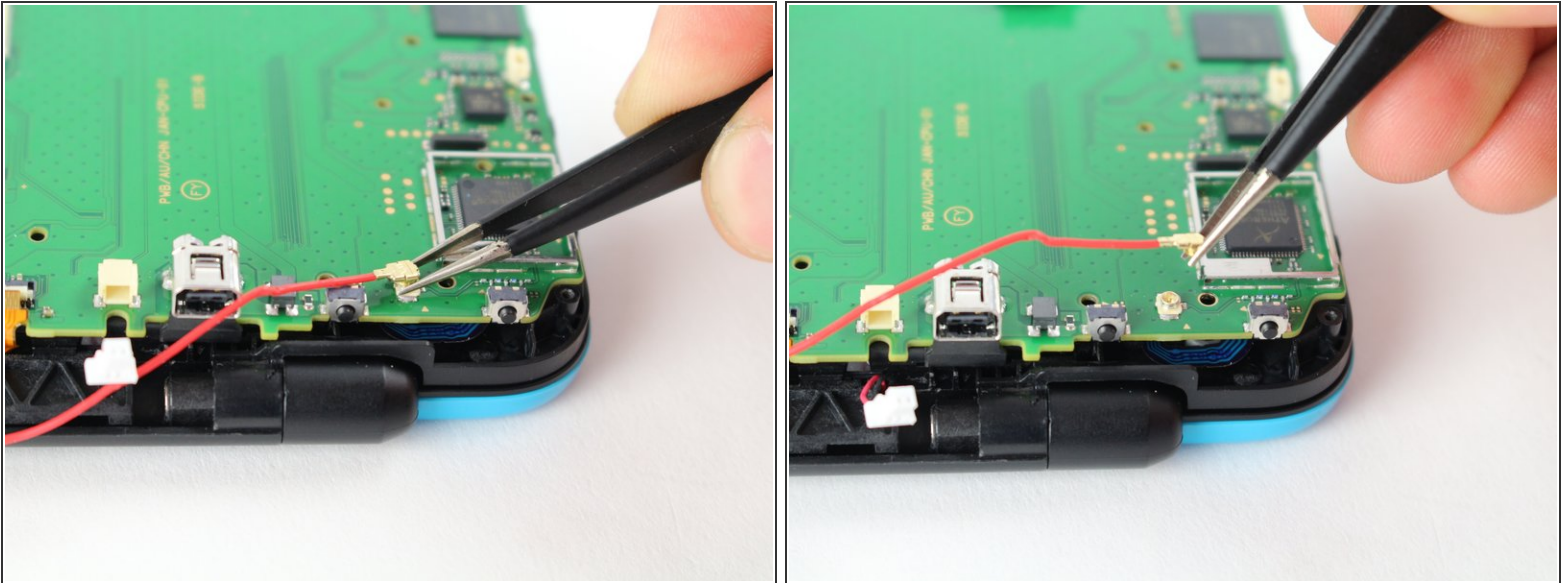
- Lift up ZIF connector holding down the golden ribbon cable located next to the charging port.
- Gently pull the ribbon cable out from the connector.

Step 15



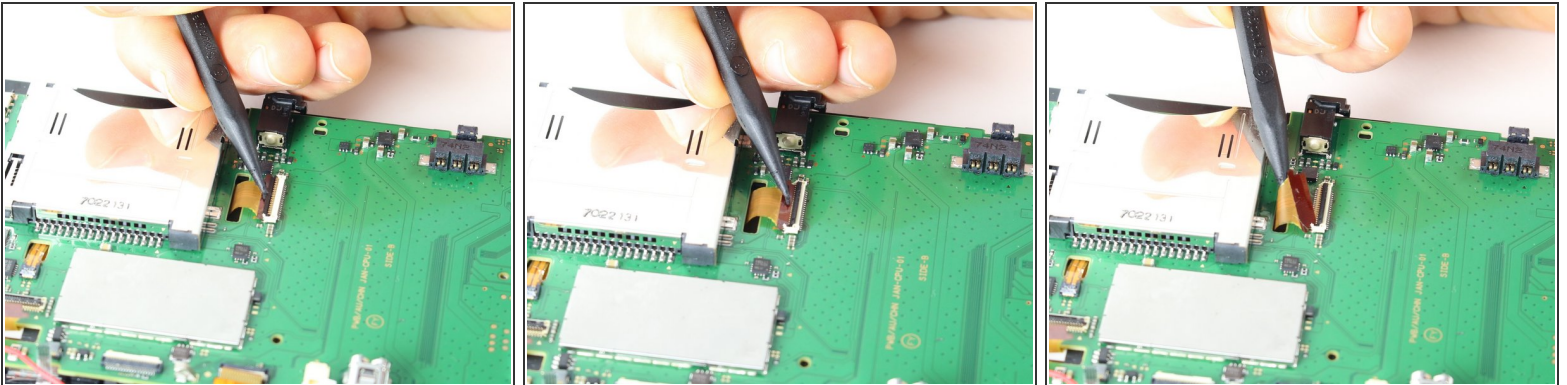
- Using tweezers, gently pull out the plug located next to the charging port.

Step 16



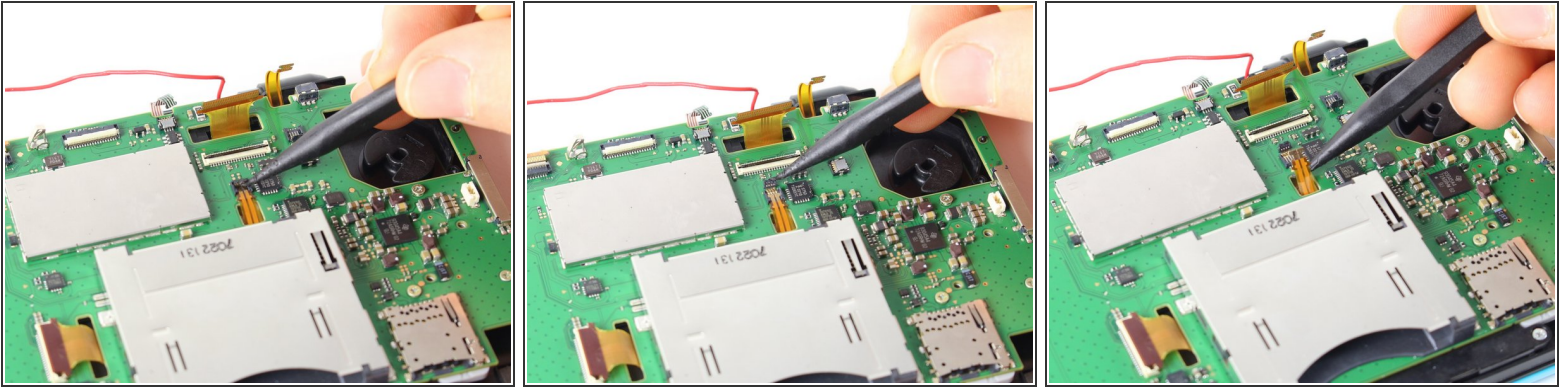
- Using tweezers, remove the red wire connecting the top screen to the motherboard by gently pulling the connector straight up.

Step 17



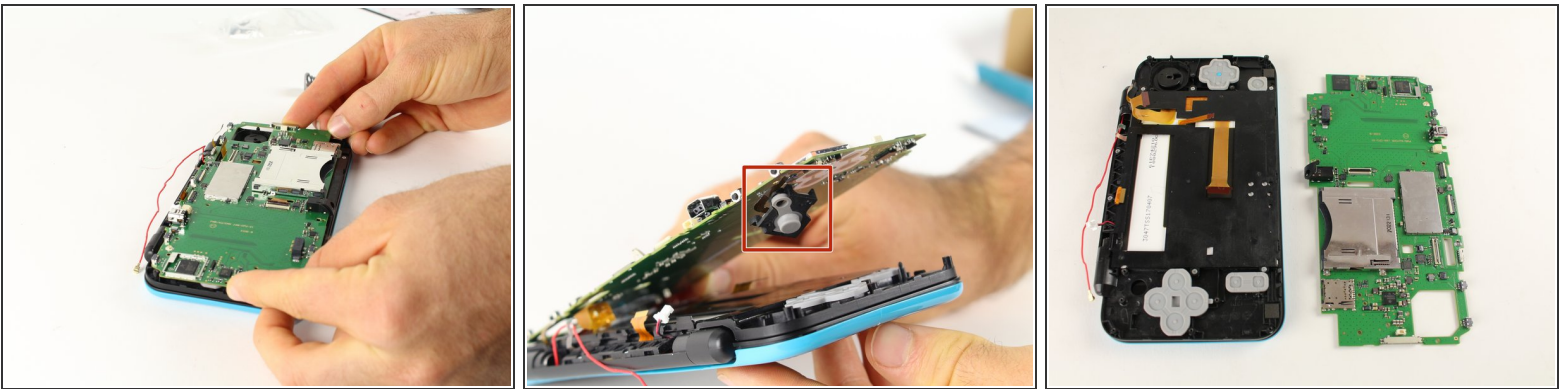
- Lift up the ZIF connector holding down the wide golden ribbon cable coming through the motherboard next to the game cartridge shell.
- Gently pull the ribbon cable out from the connector.


Step 18



- Pry up the ZIF connector behind the game cartridge shell holding a small bronze ribbon cable that comes through the motherboard.
- Remove the ribbon cable by pulling it out from the connector.

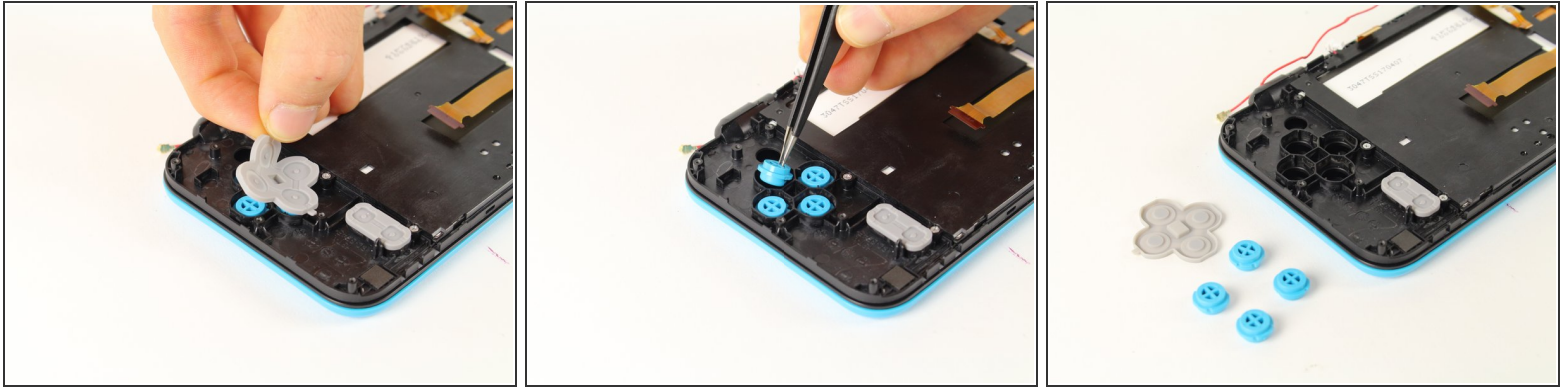
Step 19



 The C stick is still connected to the motherboard on the bottom side, and will pop out with the motherboard (Picture 2).

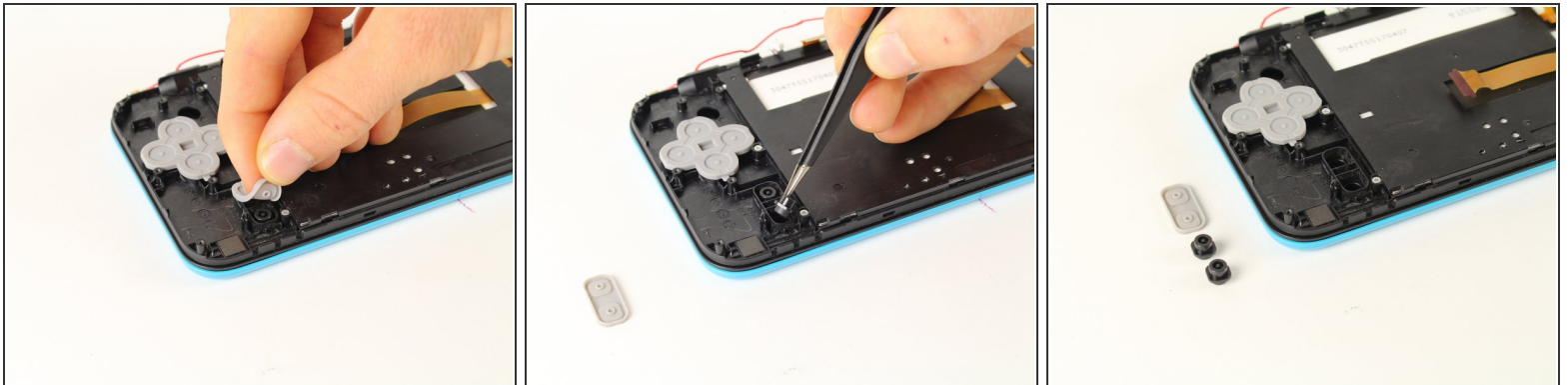
- Separate the motherboard from the rest of the device by vertically lifting it out of the casing

Step 20 — Button Removal



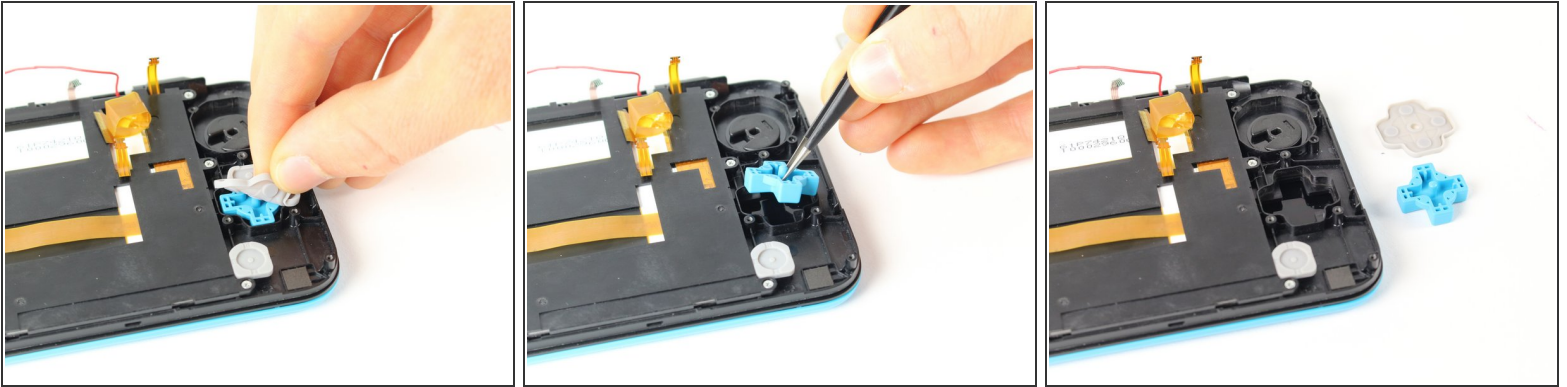
- Lift off the rubber cover on the A, B, X, and Y buttons.
- Using tweezers, lift out the buttons.

Step 21



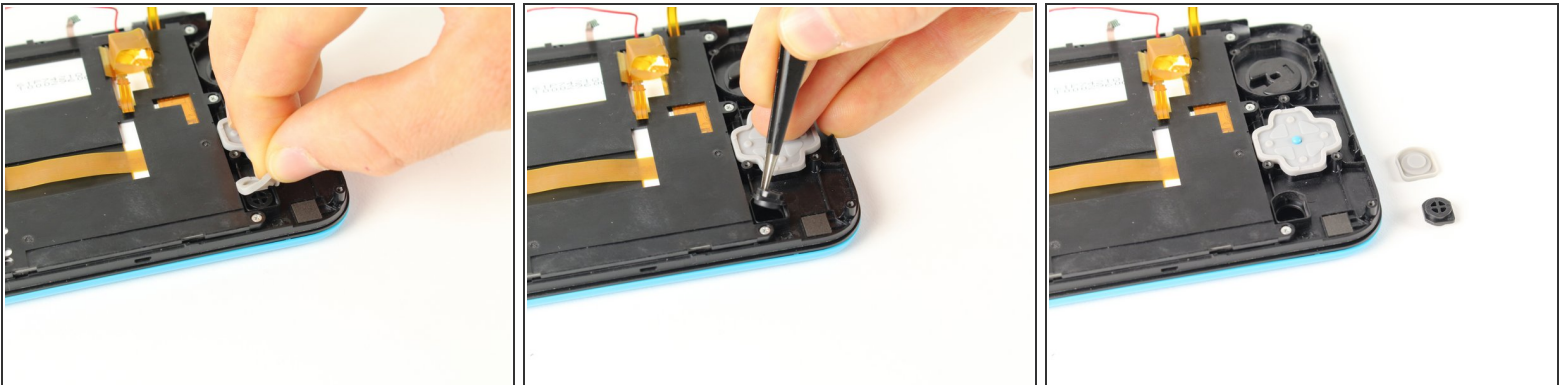
- Lift off the grey rubber cover on the start and select buttons.
- Using tweezers, lift out the buttons.

Step 22



- Lift off the grey rubber membrane on the D-pad.
- Using tweezers, lift the D-pad out.

Step 23



- Lift off the grey rubber membrane covering the home button.
- Using tweezers, lift out the button.

To reassemble your device, follow these instructions in reverse order.