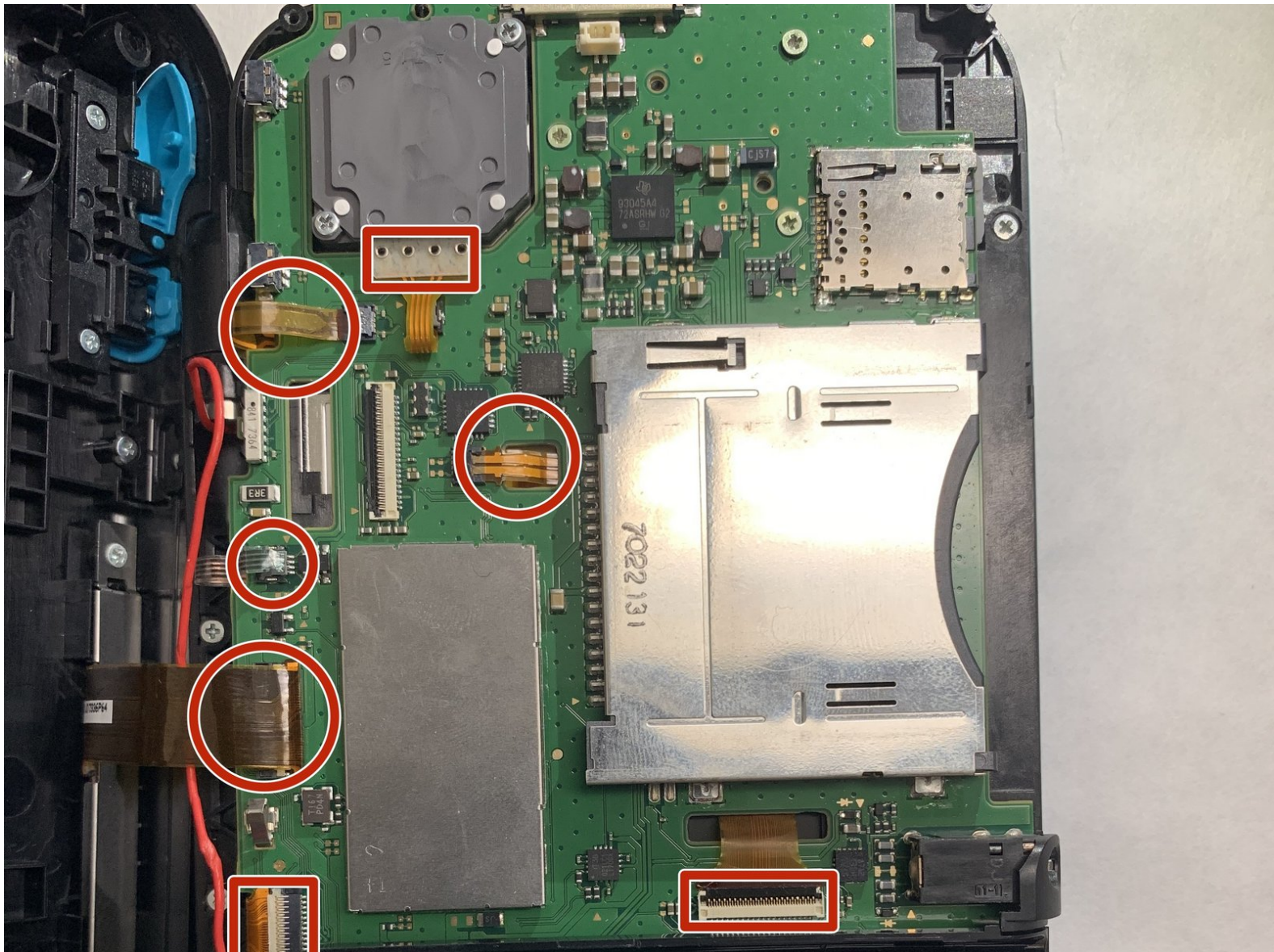




# New Nintendo 2DS XL Motherboard Replacement

Motherboard replacement for the New Nintendo 2DS XL.

Written By: Caleb Hayhurst



---

## INTRODUCTION

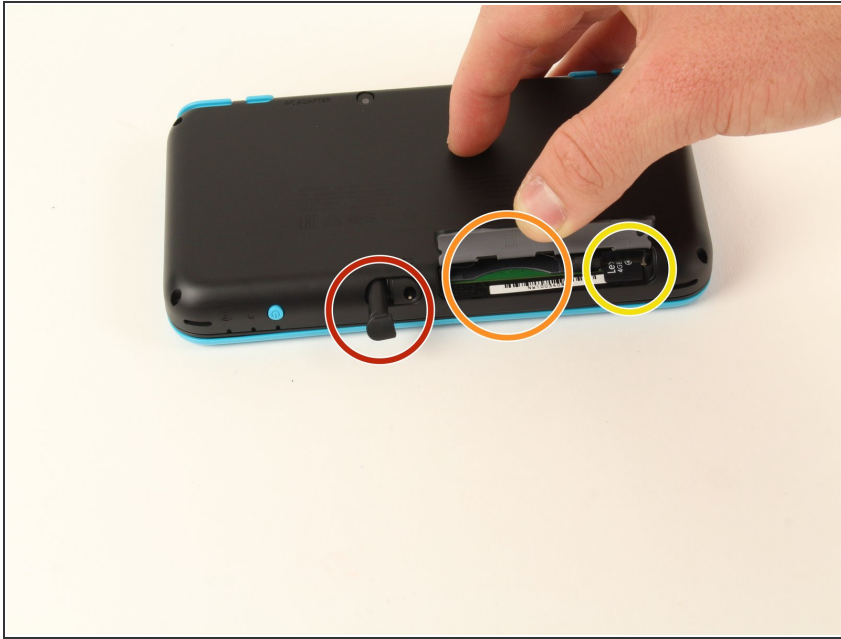
Your New Nintendo 2DS XL may need to have its motherboard replaced at some point in its life. This guide aims to provide step by step instructions on how to safely and effectively replace the motherboard. Before working on your New Nintendo 2DS XL, make sure the AC adapter is disconnected from the New Nintendo 2DS XL and that it is completely powered off.



### TOOLS:

- [Tweezers](#) (1)
  - [Spudger](#) (1)
  - [Tri-point Y00 Screwdriver Bit](#) (1)
-

## Step 1 — Back Cover Removal Preparation



- Before starting the disassembly, remove
  - The stylus
  - Any game cartridge
  - The SD card

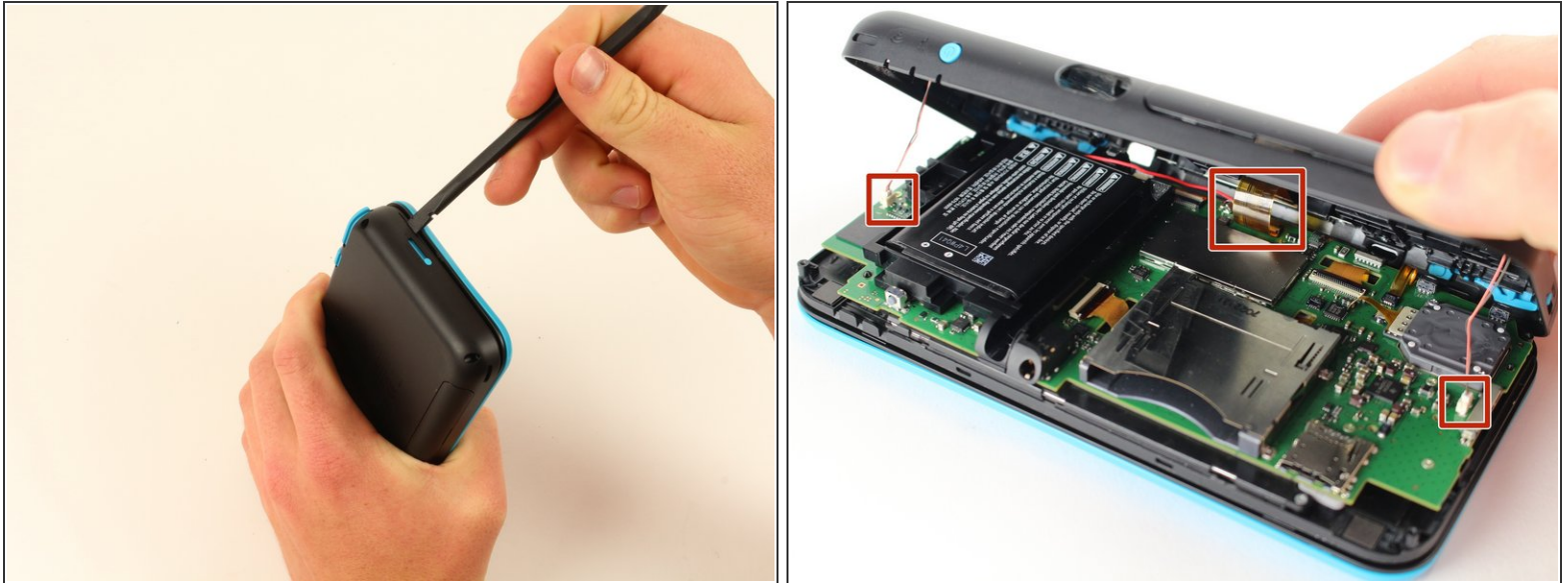
## Step 2 — Back Cover Removal



- Unscrew the four 6mm tri-point screws located at the four corners of the bottom panel.



## Step 3 — Case Separation



**!** Be careful when separating the bottom panel from the front casing to avoid breaking the three cables connected to the motherboard (two on each side and one in the rear).

- Using a spudger, separate the back panel from the front casing by gently prying around the panel.
- There are many clips along the hinge of the case, so it is recommended to work your way along one short side and the two long sides before finishing the last short side.

## Step 4



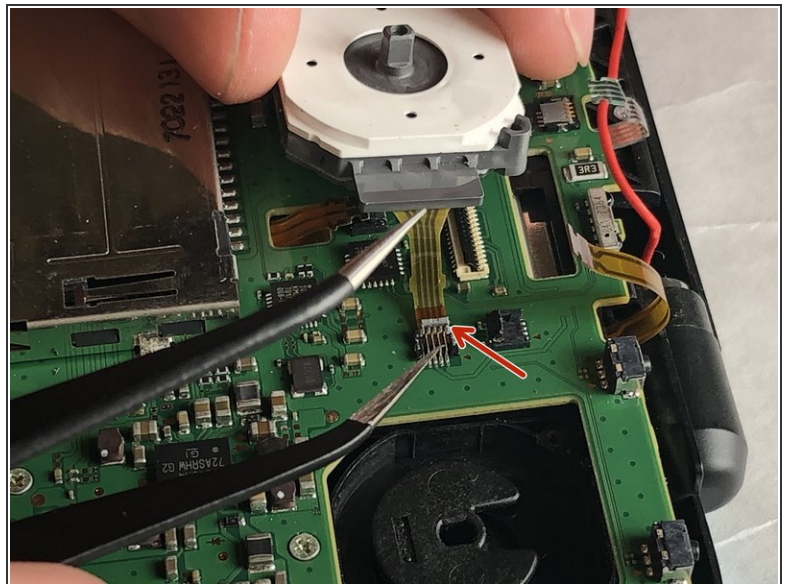
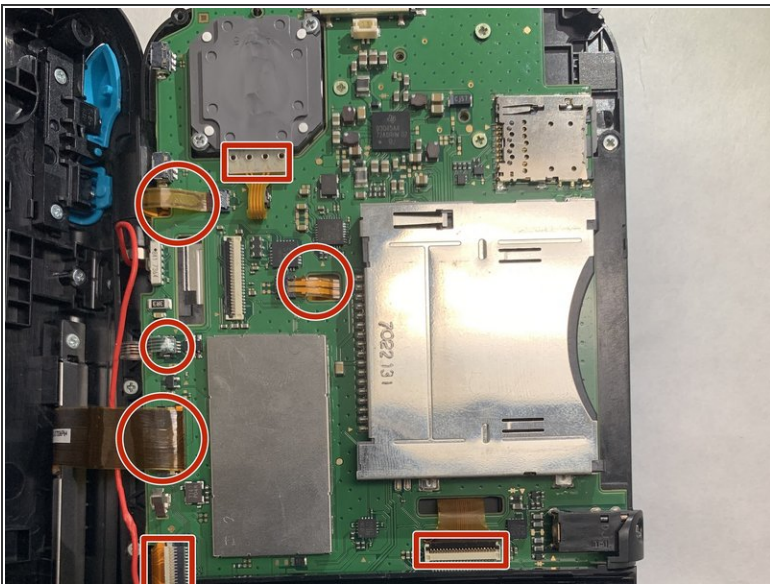
- Using tweezers, disconnect the two cables that connect the rear buttons on either side to the motherboard by gently pulling them upwards.

## Step 5 — Battery Removal



- Using a spudger, lift out the battery.
- Be aware that there is a sticky pad holding the battery into its tray. It may be necessary to use multiple tools to gently pry the battery away from the tray and motherboard.

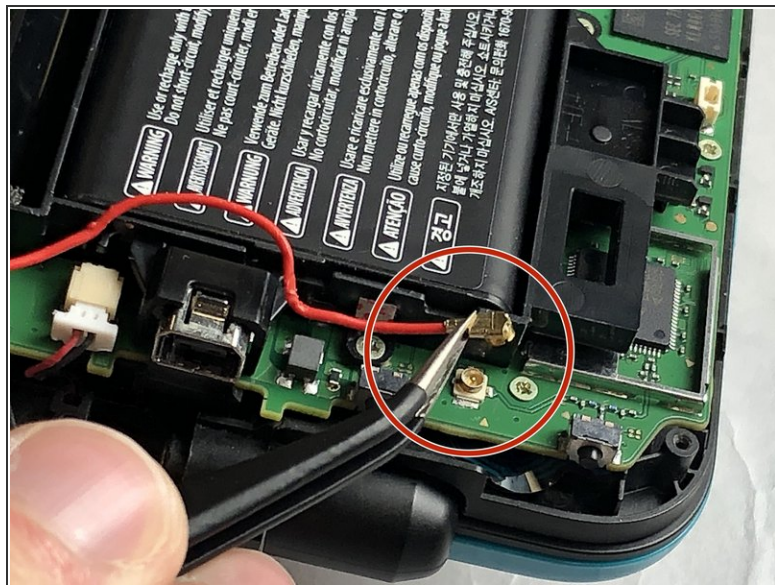
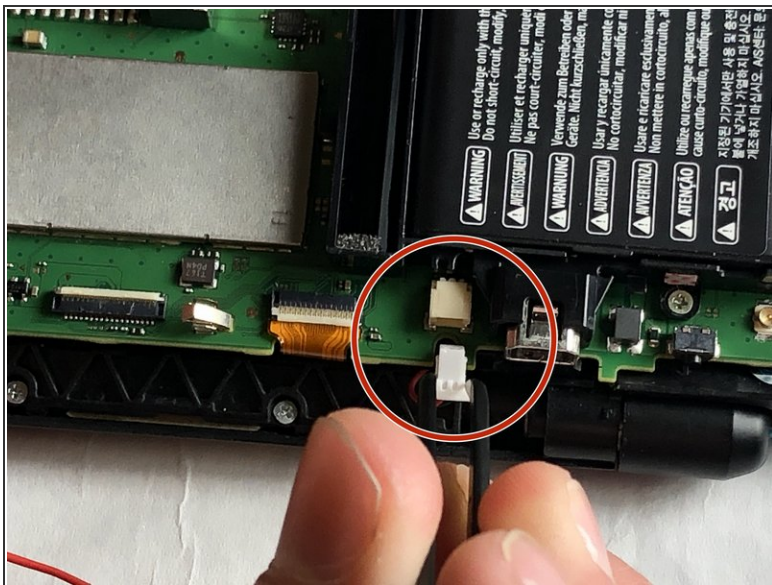
## Step 6 — Motherboard



- There are 7 ribbon cables that need to be removed as shown in the picture. Use a pair of tweezers to flip the latches up and pull the ribbon cable out.

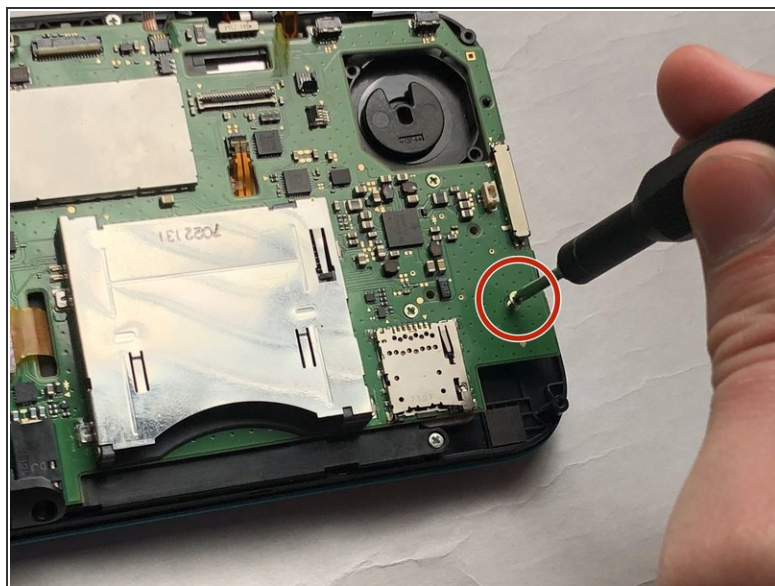
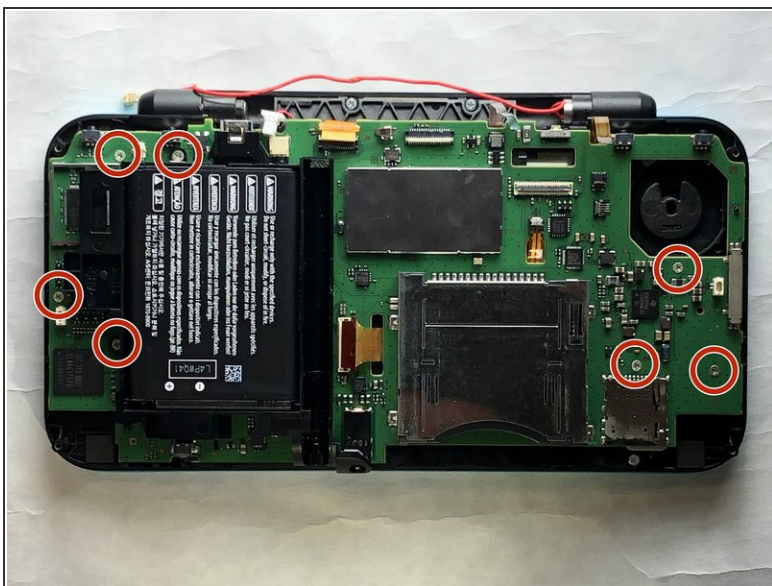


## Step 7



- Unplug the following wires from the motherboard using a pair of tweezers.

## Step 8



- Remove the following screws using a Tri-point Y00 screwdriver bit.
- Remove the motherboard from the device.

To reassemble your device, follow these instructions in reverse order.