



Nextplay NP109CR Disassembly

Use this guide to disassemble the Nextplay NP109CR.

Written By: Chotipong Chamchalaem



INTRODUCTION

The button sheet on the Nextplay NP109CR is sometimes placed incorrectly on the device. This prevents the buttons from working correctly. This guide will fix and place the buttons correctly on to the sheet. Use this guide to disassemble the device to reach the buttons. Follow the step by step instructions to re-position the buttons.



TOOLS:

- [precision screw drivers](#) (1)
-

Step 1 — Nextplay NP109CR Disassembly



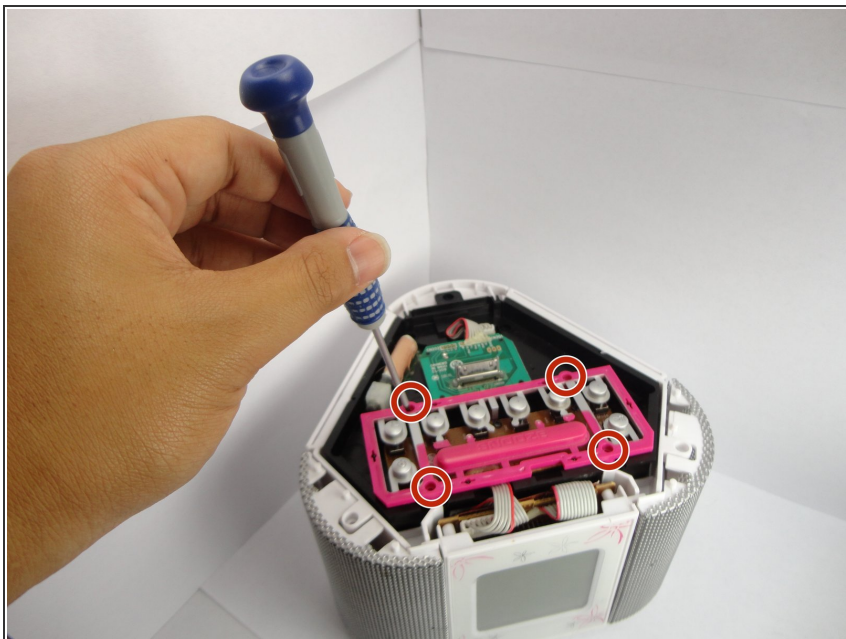
- Unscrew the two screws with a Phillips #0 screwdriver on the top side of the device right in front of the eight buttons.

Step 2



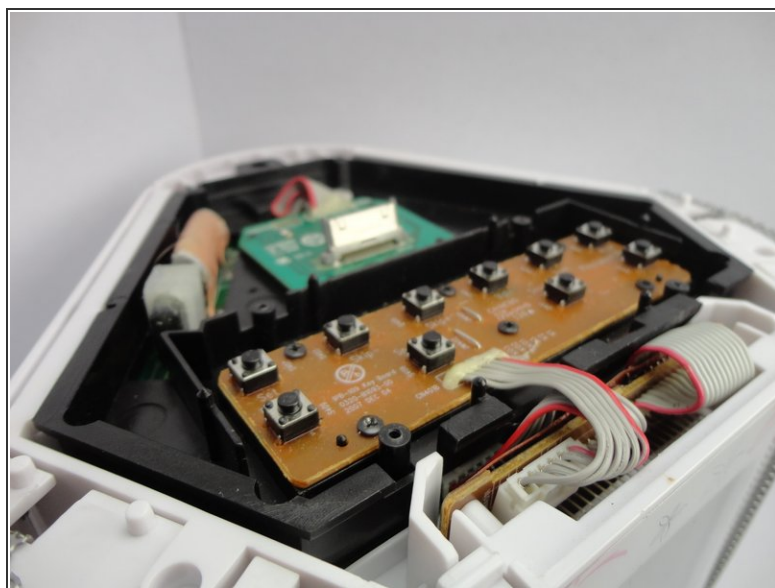
- Remove the lid from the device.

Step 3



- Unscrew the four screws with a Phillips #0 Screwdriver from the pink button sheet.

Step 4



- Remove the pink button sheet from the device by pulling out each button.

Reverse these steps to reassemble the device.