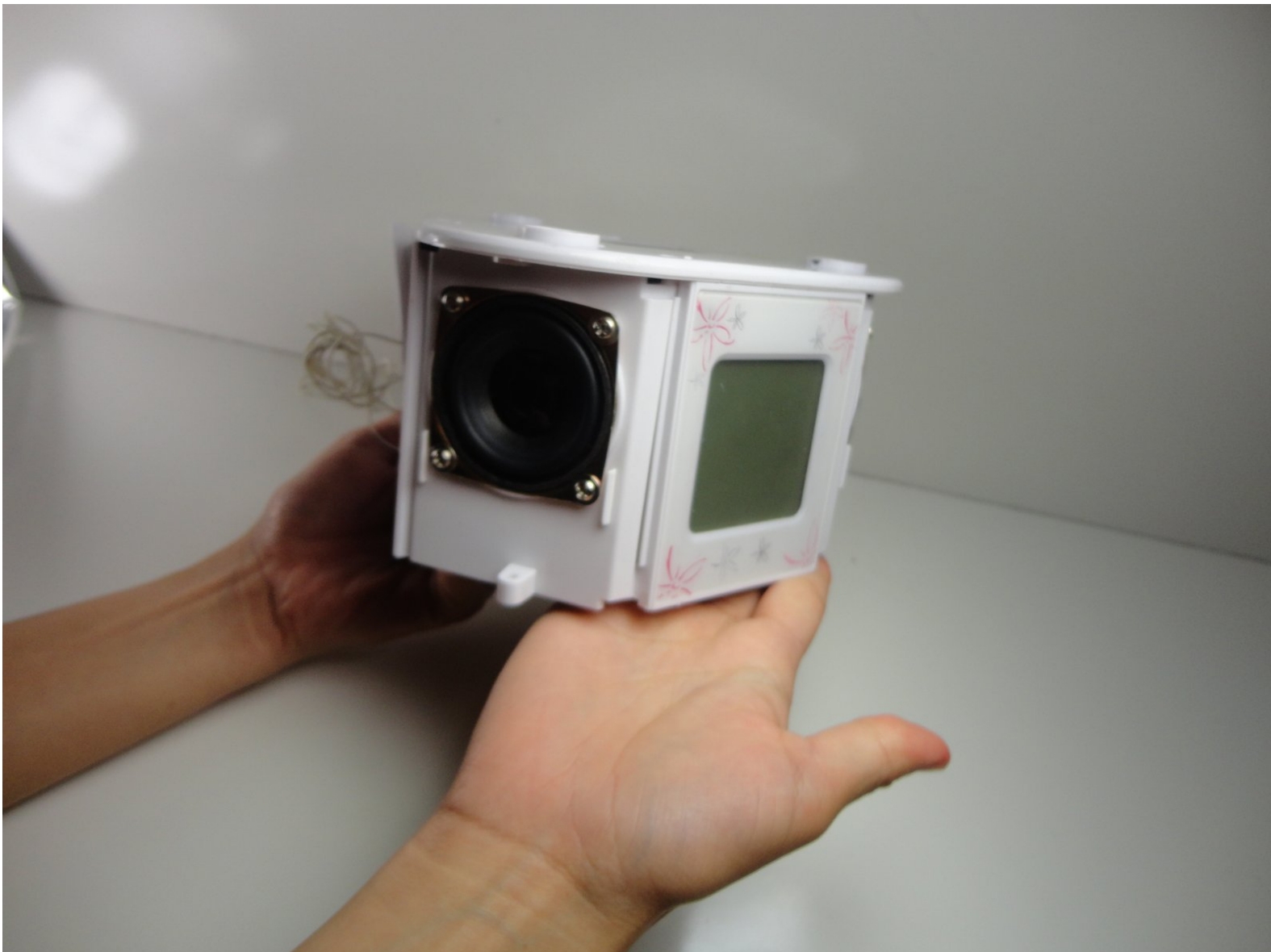




# Nextplay NP109CR Speakers Replacement

Re-attaching speakers so sound will come out of them again.

Written By: Michelle Read





## TOOLS:

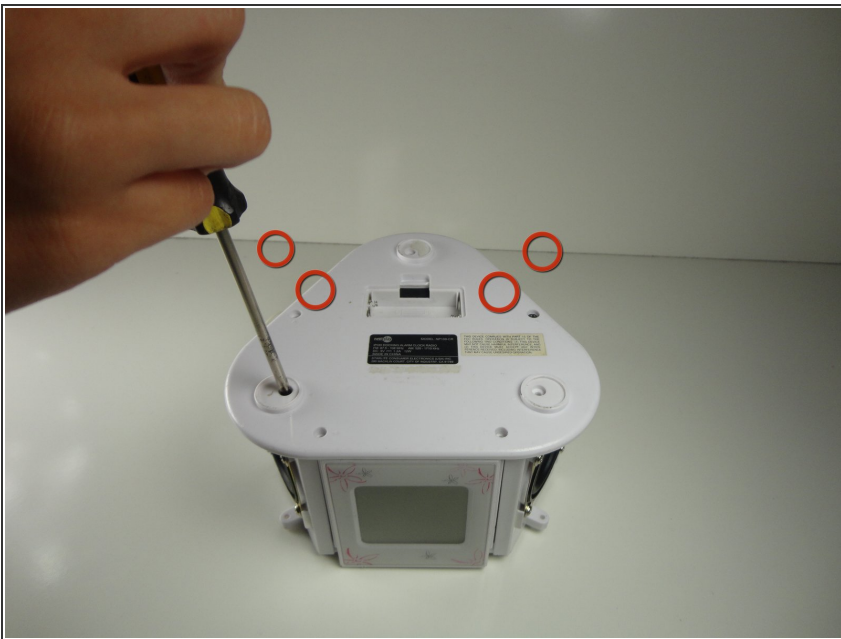
- [Phillips #0 Screwdriver](#) (1)
  - [Phillips #1 Screwdriver](#) (1)
-

## Step 1 — Speakers



- Turn the device over so it is upside-down.

## Step 2



- Unscrew the 4 screws closest to the screen.

### Step 3



- Flip over the device so it is right side up.

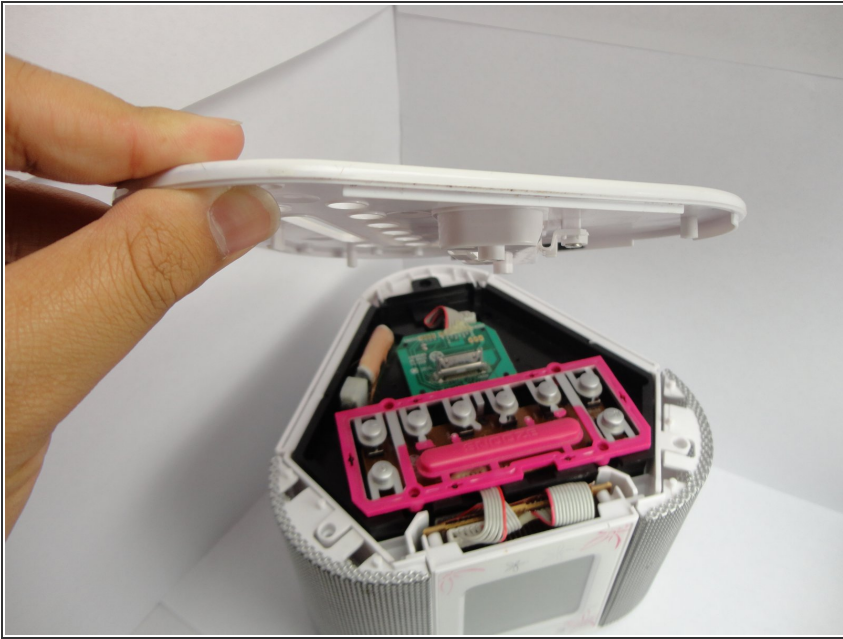
### Step 4



- Unscrew the 2 screws on the top of the device, next to the docking plug.

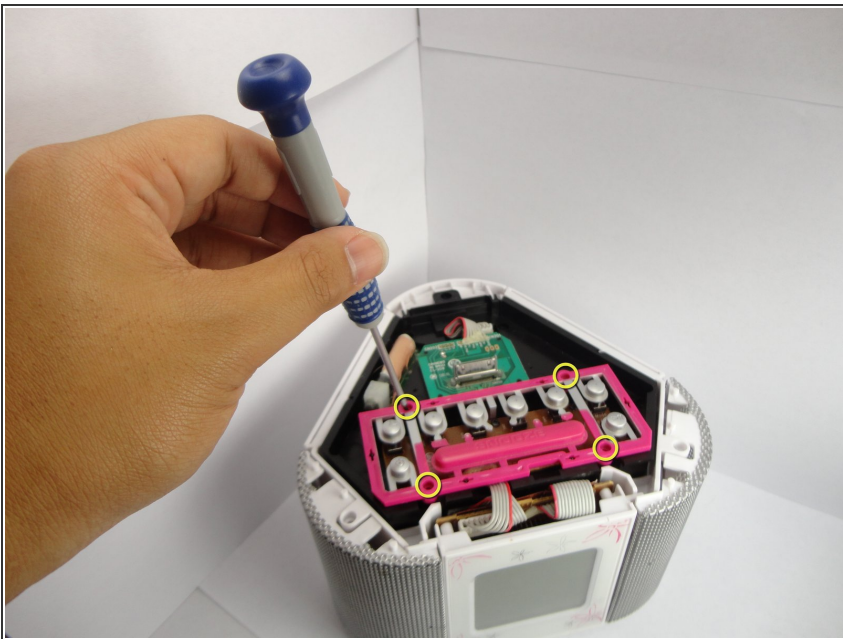


## Step 5



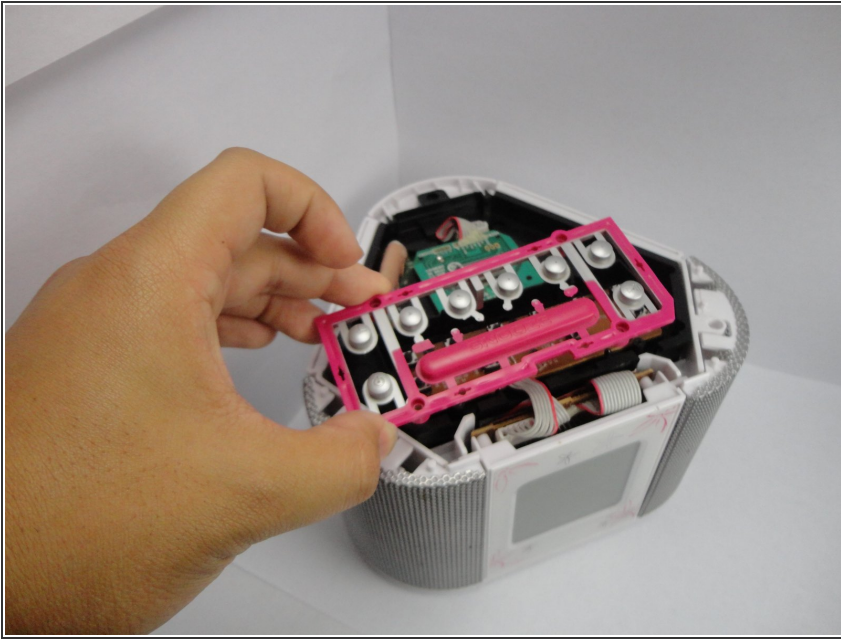
- Take off top piece by using slight force and pulling off.

## Step 6



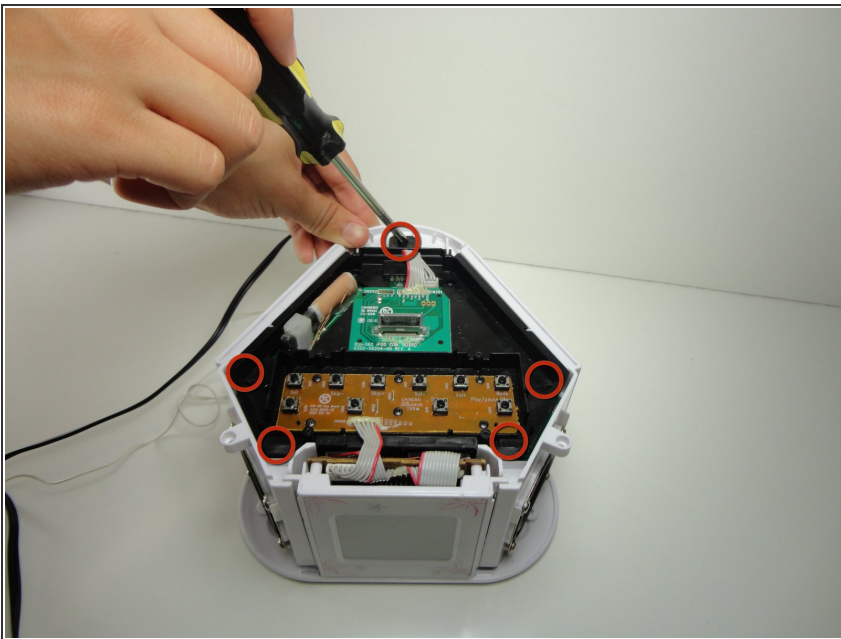
- Unscrew the button board with smaller screwdriver.

## Step 7



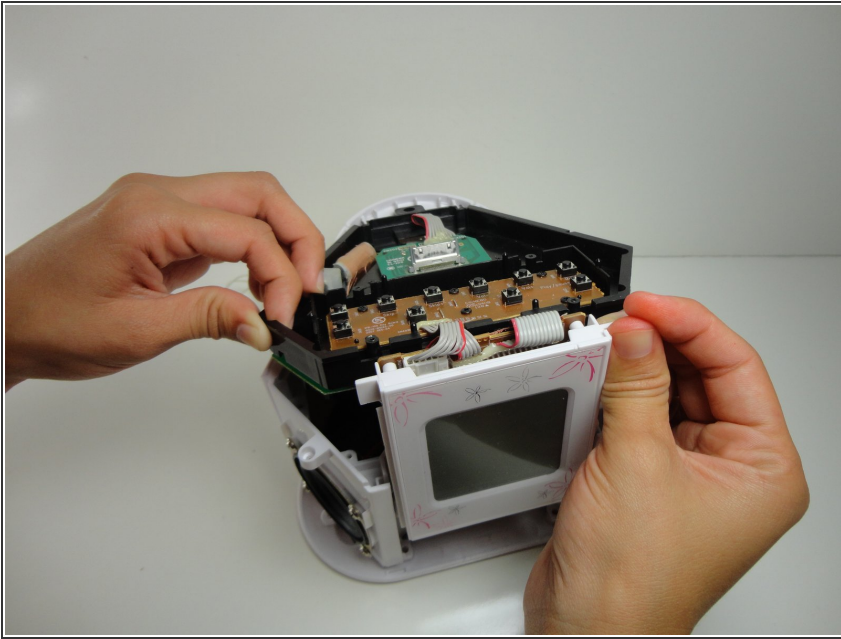
- Lift off the button board.

## Step 8



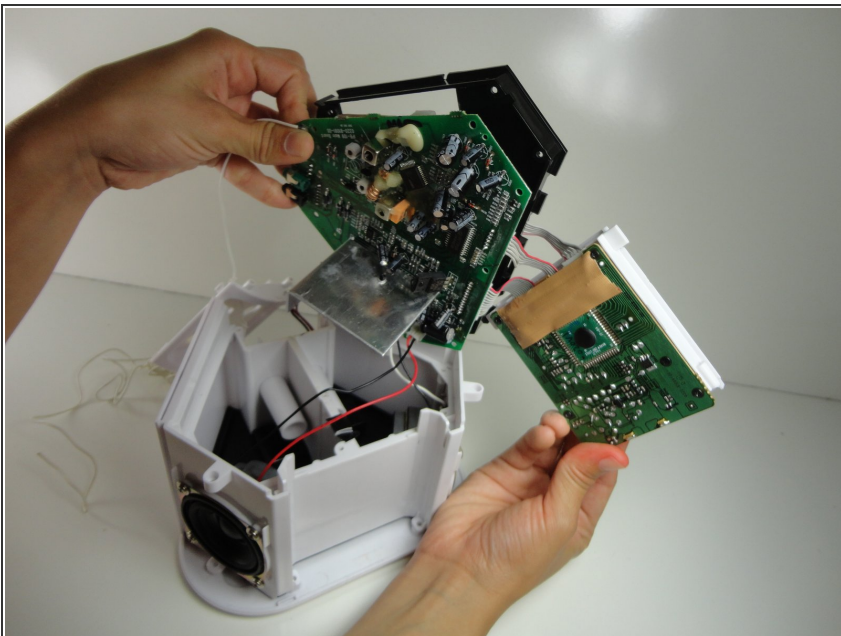
- Unscrew all visible of the screws on the black logic board cover with the larger screwdriver.

## Step 9



- Lift the screen vertically straight up.
- ⓘ As you do this the logic board should move off with it.

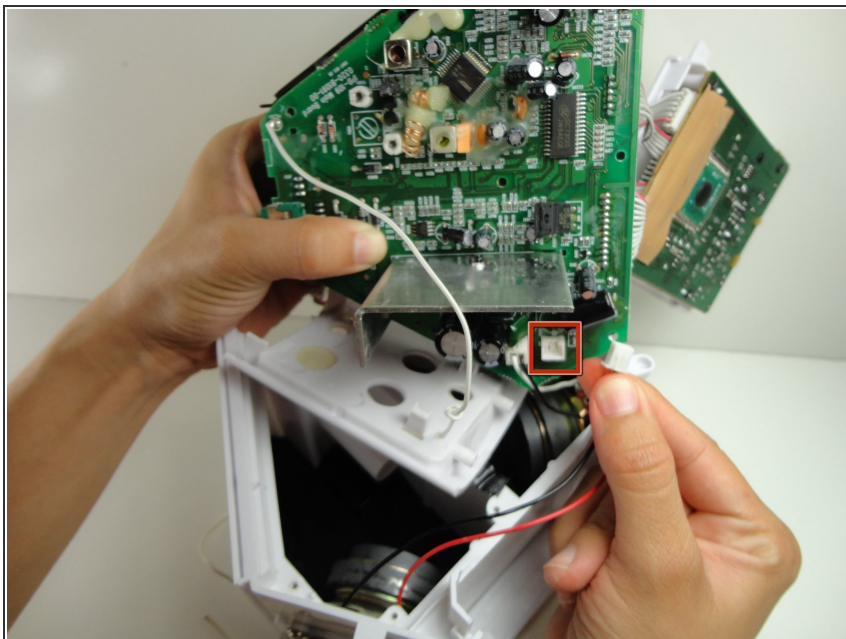
## Step 10



- Flip the screen and the logic board over to the right side.



## Step 11



- Pull out the white plug that goes from the speakers to the logic board.
- ☑ Then plug back in making sure it is completely connected.

To reassemble your device, follow these instructions in reverse order.