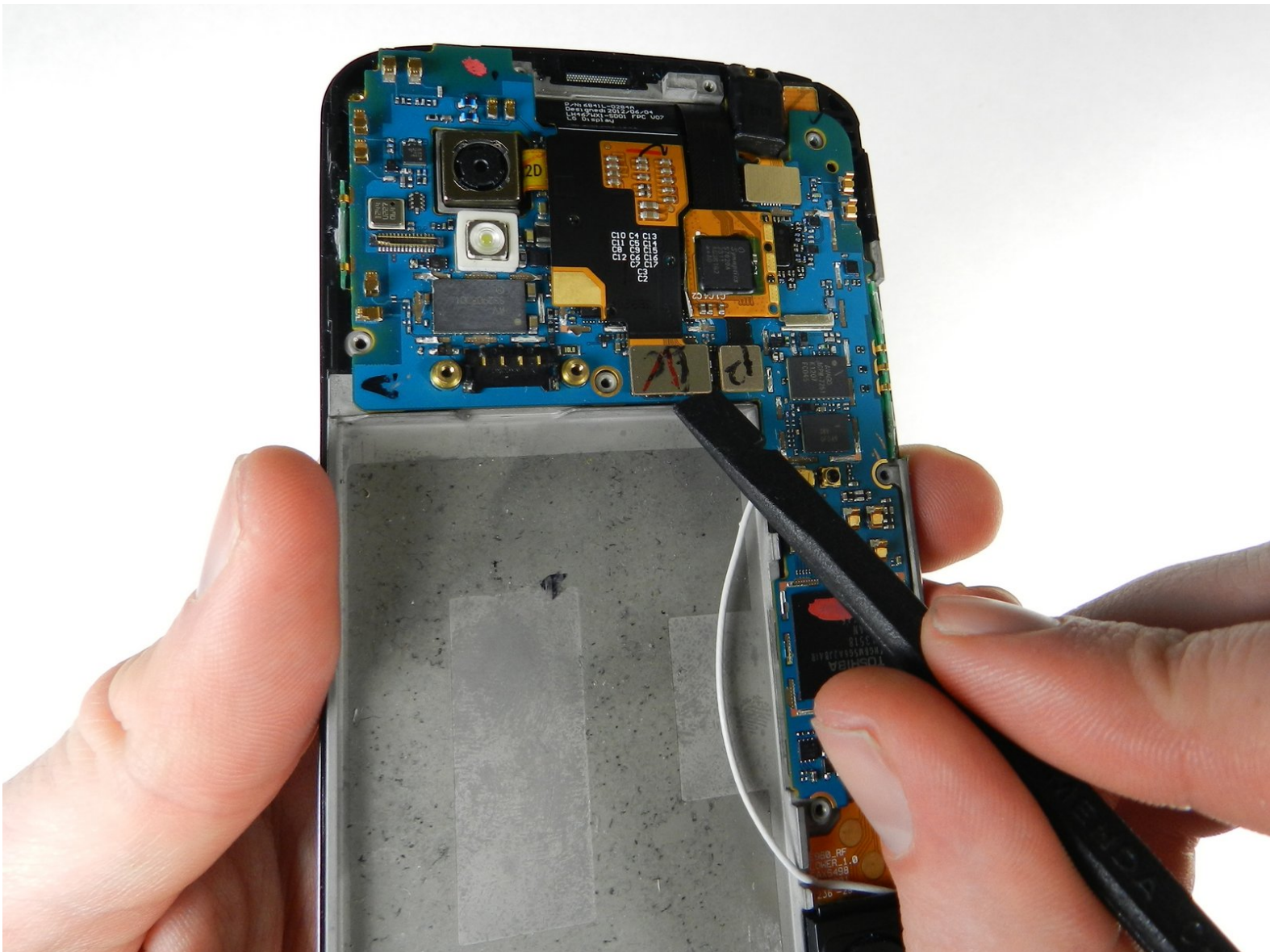




# Nexus 4 Camera Replacement

This guide shows how to remove and replace the phone's camera.

Written By: Kaitlyn Jones



## INTRODUCTION

This guide shows how to remove and install the phone's camera located in the top left-hand corner of the motherboard.



### TOOLS:

- [Phillips #00 Screwdriver](#) (1)
- [iFixit Opening Tools](#) (1)
- [Spudger](#) (1)
- [T5 Torx Screwdriver](#) (1)



### PARTS:

- [Nexus 4 \(GSM\) Rear Camera](#) (1)

## Step 1 — Back Cover



- Power off the phone, by long-pressing the power button and touching *Power off*.
  - Remove the SIM tray using the [SIM Card Eject Tool](#).
- ☑ This step is required in order to remove the back case.

## Step 2



- Remove the two screws from the bottom of the phone with a [T5 Torx Screwdriver](#).



### Step 3



- Gently open the back case by prying along the edge of the cover, starting at a corner of the phone and circling around the phone using a [plastic opening tool](#).
- ⓘ The opening process may take a few minutes. The plastic will make a light snapping noise as the back cover separates from the rest of the phone.

### Step 4 — Battery



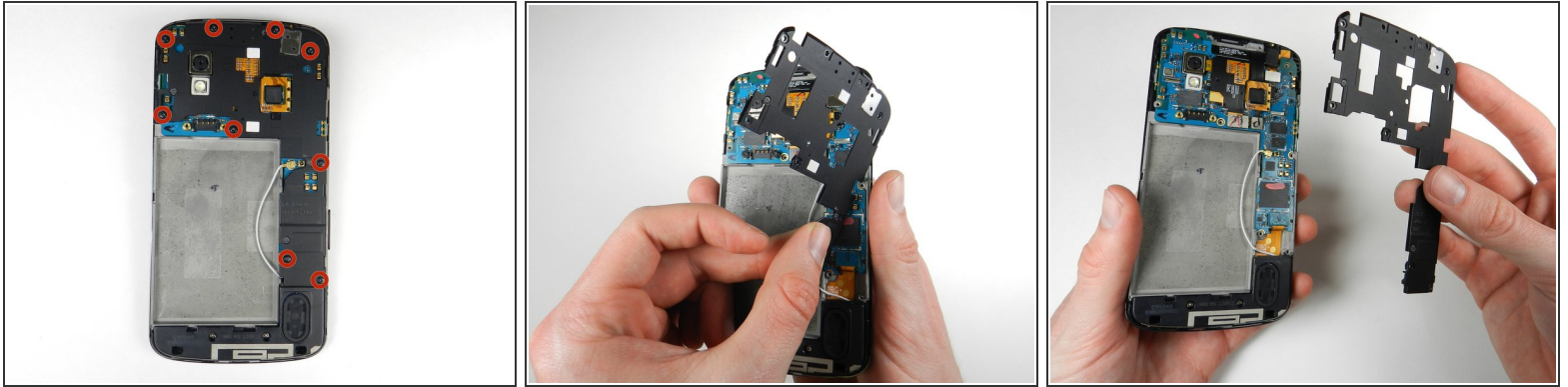
- Remove the two 1.8 mm Phillips screws holding down the battery connector.
- Using a plastic opening tool, disconnect the battery cable from its socket on the motherboard.

## Step 5 — Battery removal



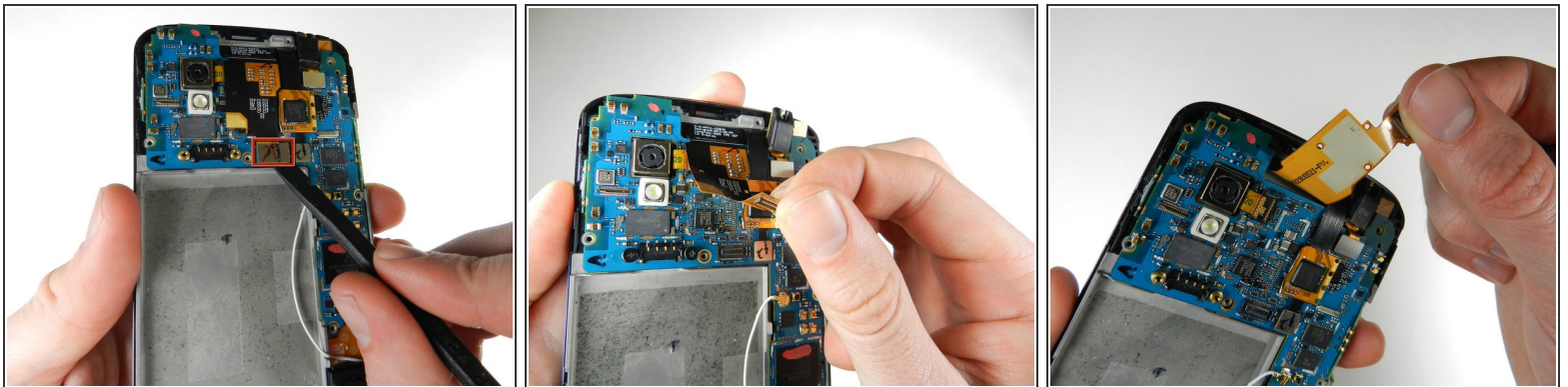
- Remove the blue tape that secures the white antenna cable to the battery.
- Using a spudger, carefully disconnect the white antenna cable.
- Carefully pry the battery out with a [Plastic Opening Tool](#), starting at the top left-hand corner and working down towards the bottom right-hand corner.
- ⓘ If necessary, you can also use a [plastic card](#) to separate the battery from the metal midframe.
- ✦ The battery is securely glued to the phone. When reinstalling the battery, press the battery firmly against the adhesive strip.

## Step 6 — Plastic Midframe



- Remove the nine 4.6 mm Phillips #000 screws. Gently lift out the plastic cover.
- The midframe is held in with two clips, one at either side. Use a plastic spudger to release each side and gently lift up and away.

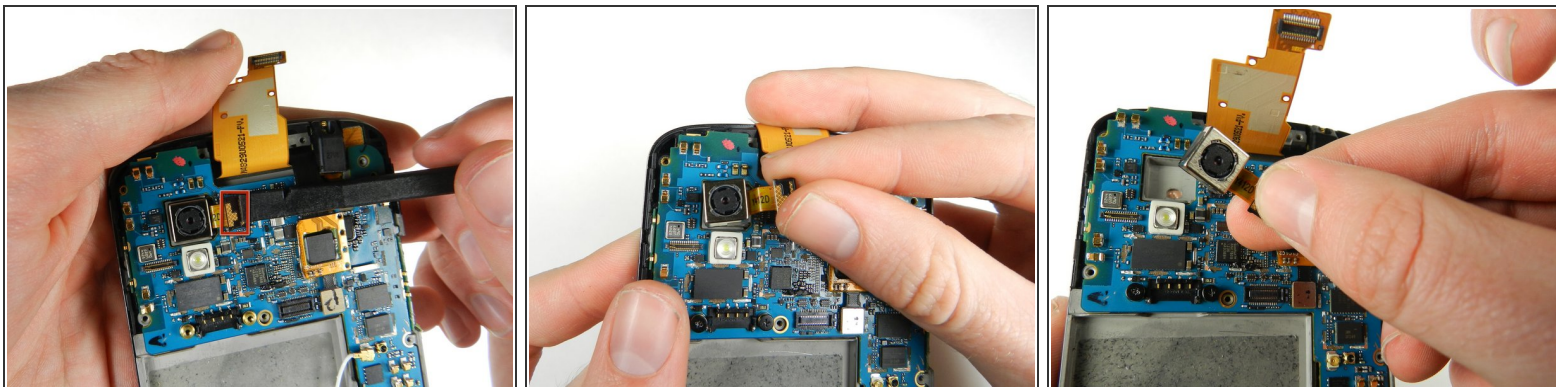
## Step 7 — Camera



- Gently pry the metal tab up using a spudger, and lift up the disconnected black flap.



## Step 8



- With a spudger, carefully pry up the black tab connecting the camera to the motherboard.
- Lift up the camera from the socket.

To reassemble your device, follow these instructions in reverse order.