



Nexus 5 Rear Facing Camera Replacement

Replace the rear-facing camera in your Nexus 5.

Written By: Chris Willis



INTRODUCTION

Use this guide to replace the rear-facing camera in your Nexus 5.



TOOLS:

- [Spudger](#) (1)
- [iFixit Opening Picks set of 6](#) (1)
- [Phillips #00 Screwdriver](#) (1)
- [iFixit Opening Tools](#) (1)



PARTS:

- [Nexus 5 Rear Camera](#) (1)

Step 1 — Back Cover



- Use a plastic opening tool to free the clips on the top and each side of the back cover.
- i The bottom is secured with some adhesive foam. You should be able to finally free the back cover using an opening pick. The "snaps" at the bottom edge are more like hinges, so release all others then swing the back cover off outward from the top, and these fasteners will release without breaking.
- ! It's best to avoid prying around the SIM card slot and volume controls, as the plastic in these areas is very thin and likely to break from prying.
- ★ When you *replace* the cover, there is a snap about even with the flash window that must also be attached (one of three that secure the back cover to the midframe). Qi (wireless) charging may not work if this isn't secure. Apply gentle but firm pressure over the "S" in "Nexus" and slide your thumb up towards the top, and the snap will engage.

Step 2 — Midframe



- Remove the six 4.0 mm Phillips #00 screws that secure the midframe to the phone.
- ⚠ Ensure you retain all six of the 4.0mm screws! These hold the midframe securely and closely to the motherboard. The three small snaps on the back cover that attach to the midframe ensure the NFC antenna and wireless charging coil connectors contact securely with the motherboard, and work reliably.
- To replace the LCD screen and digitizer, remove the additional four 4.0mm daughterboard cover screws with the same screwdriver. You may have to pierce through clear adhesive material to remove them.

Step 3



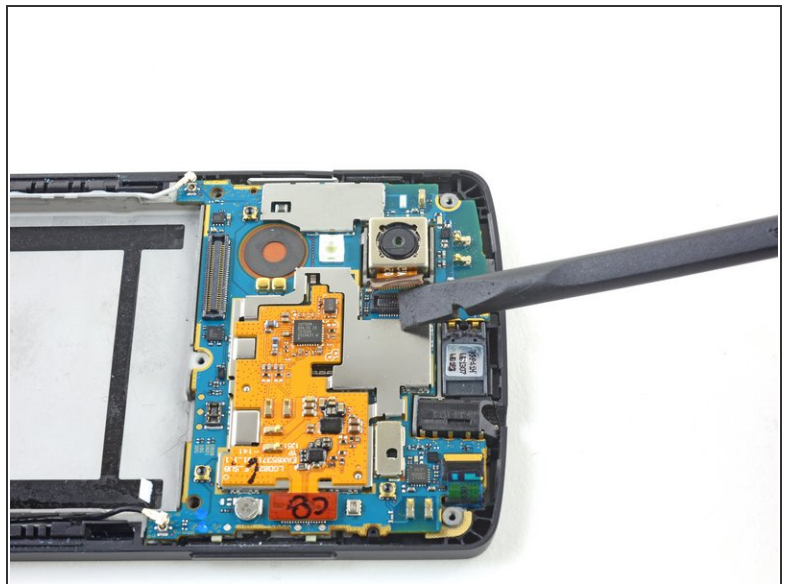
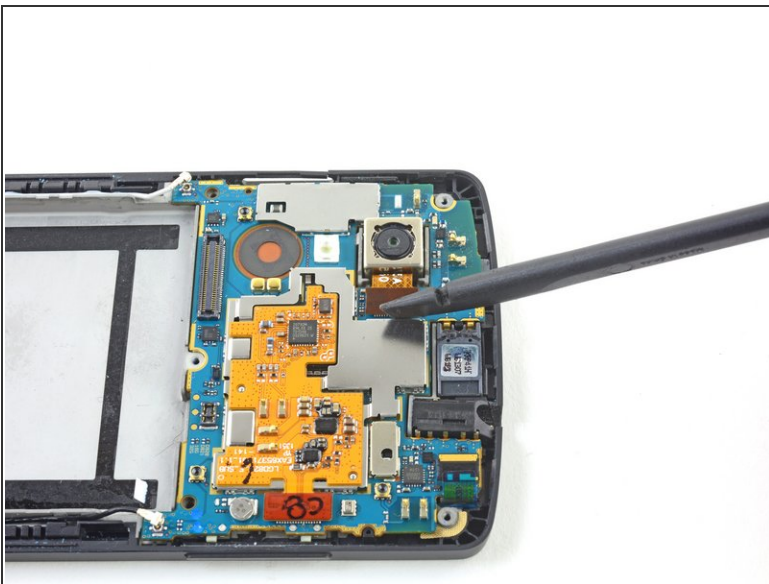
- Remove the midframe from the phone.
- ⓘ Examine the midframe and the back cover and you'll find three very small snap attachment points for the back to the midframe. These ensure that the NFC and wireless charging antenna contacts connect with the corresponding spring connectors on the motherboard. Ensure the snaps are in good condition.

Step 4 — Battery



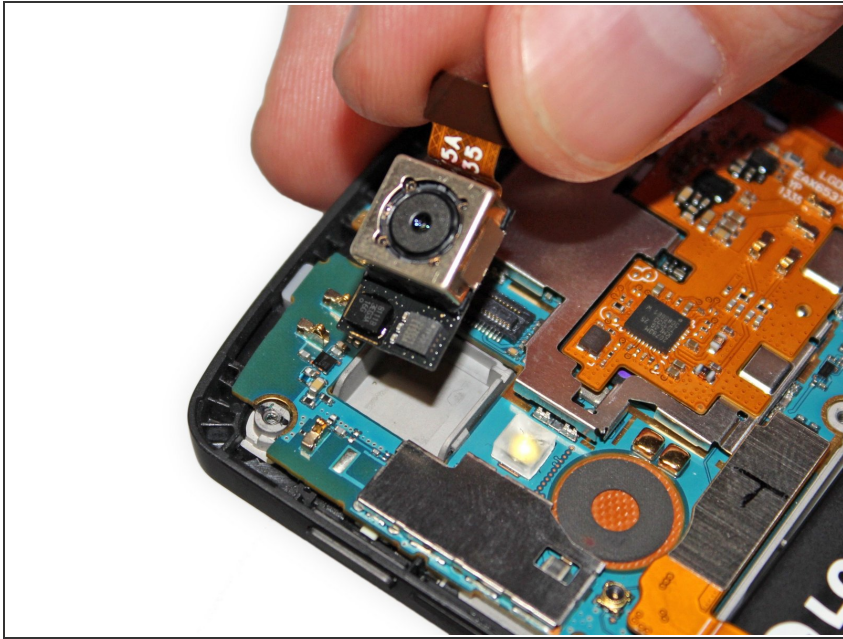
- Use the flat end of a spudger to disconnect the battery connector.

Step 5 — Rear Facing Camera



- Use the flat end of a spudger to disconnect the rear-facing camera.
- ⓘ Although the battery is not pictured in this step, it is **not** necessary to fully remove it in order to get to the rear-facing camera (Only disconnecting it is necessary).

Step 6



- Use a spudger to gently pry the rear-facing camera up to dislodge it from the adhesive.
- ⓘ There is some adhesive securing the rear-facing camera to bottom and sides of its grey housing.
- Pull the camera laterally towards its ribbon to reveal the circuit board hiding under the motherboard.
- ⚠ Don't pull upwards until you can see the black circuit board of the camera fixture.
- Once you can see all of the camera fixture, you can pull up and remove it.

To reassemble your device, follow these instructions in reverse order.