



Nexus 5X Battery Replacement

This guide shows how to replace the battery in your Nexus 5X.

Written By: Dominik Schnabelrauch



INTRODUCTION

Use this guide to replace the battery in your Nexus 5X.

Before disassembling your phone, discharge the battery below 25%. [If your battery is swollen](#), do not heat your phone. Swollen batteries can be very dangerous, so wear eye protection and exercise due caution, or take it to a professional if you're not sure how to proceed.

You'll need replacement adhesive to reattach components when reassembling the device.



TOOLS:

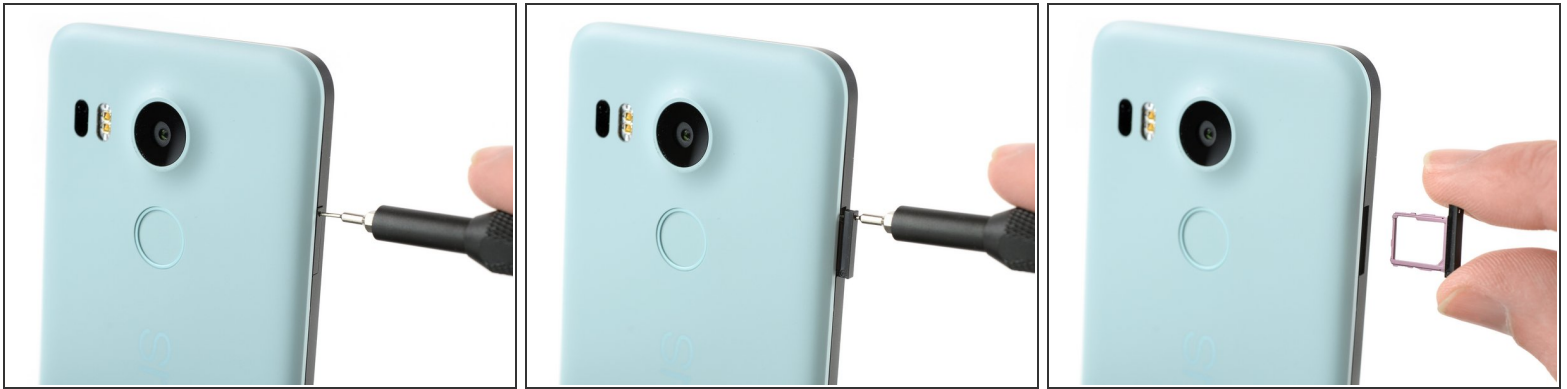
- [SIM Card Eject Tool](#) (1)
- [iFixit Opening Picks set of 6](#) (1)
- [Phillips #00 Screwdriver](#) (1)
- [iOpener](#) (1)
- [Spudger](#) (1)



PARTS:

- [Nexus 5x Battery](#) (1)

Step 1 — SIM Card Tray



- Insert a SIM card ejection tool into the hole on the SIM card tray, located on the left edge of the phone.
- Press in to eject the SIM card tray.
- Remove the SIM card tray.

Step 2 — Rear Panel



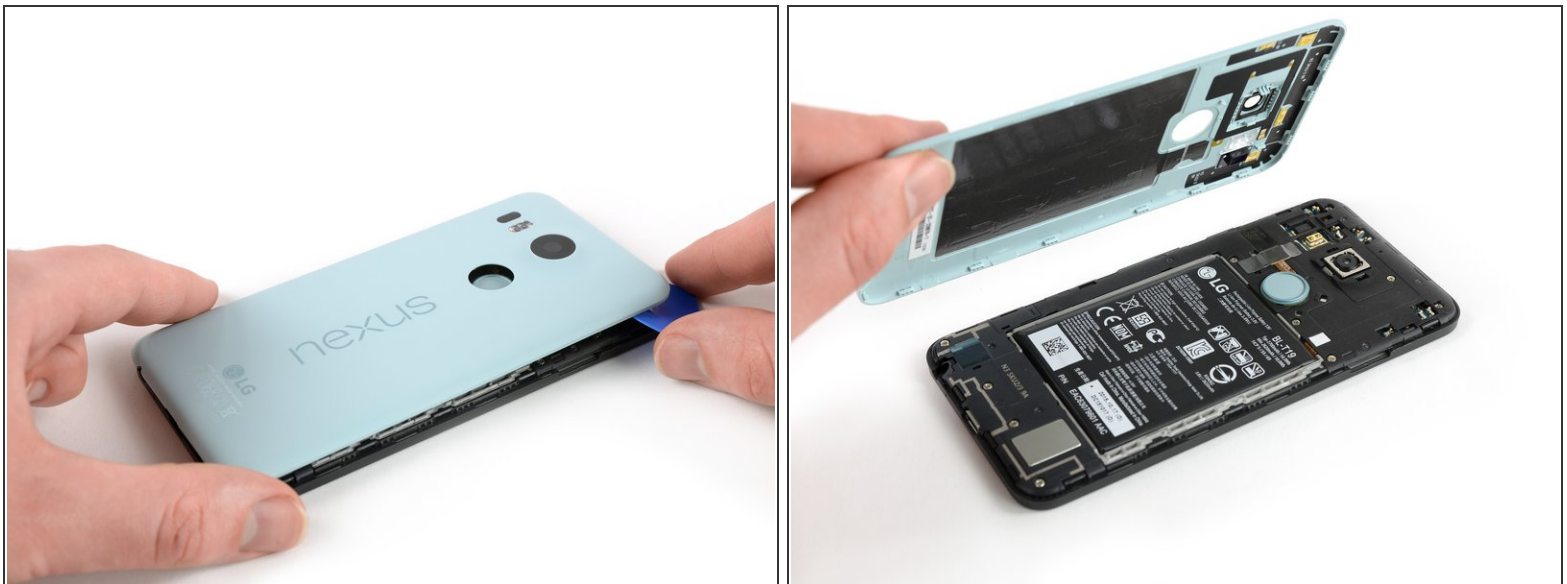
- Place an opening pick in the opening of the SIM card tray slot and twist it sideways to release the first plastic clip that holds the rear panel in its place.
- Slide the opening pick around the top edge of the phone to release the plastic clips that secure the rear panel.

Step 3



- Continue to slide the opening pick around all sides of the phone to release all clips that secure the rear panel.

Step 4



- Tilt the opening pick to lift the rear panel a little bit.
- There are two more plastic clips next to the fingerprint sensor. Release them by gently pulling the rear panel.
- Remove the rear panel.

Step 5 — Midframe



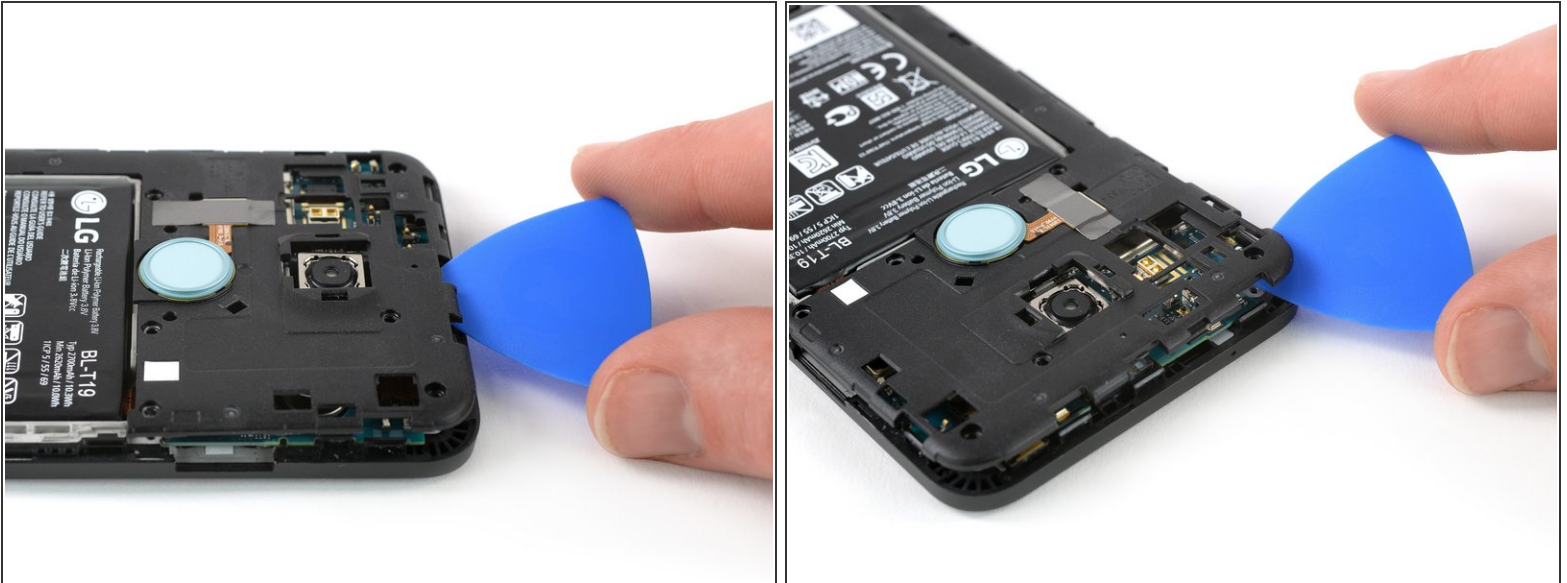
- Remove the ten 3.6 mm Phillips screws that secure the midframe.

Step 6



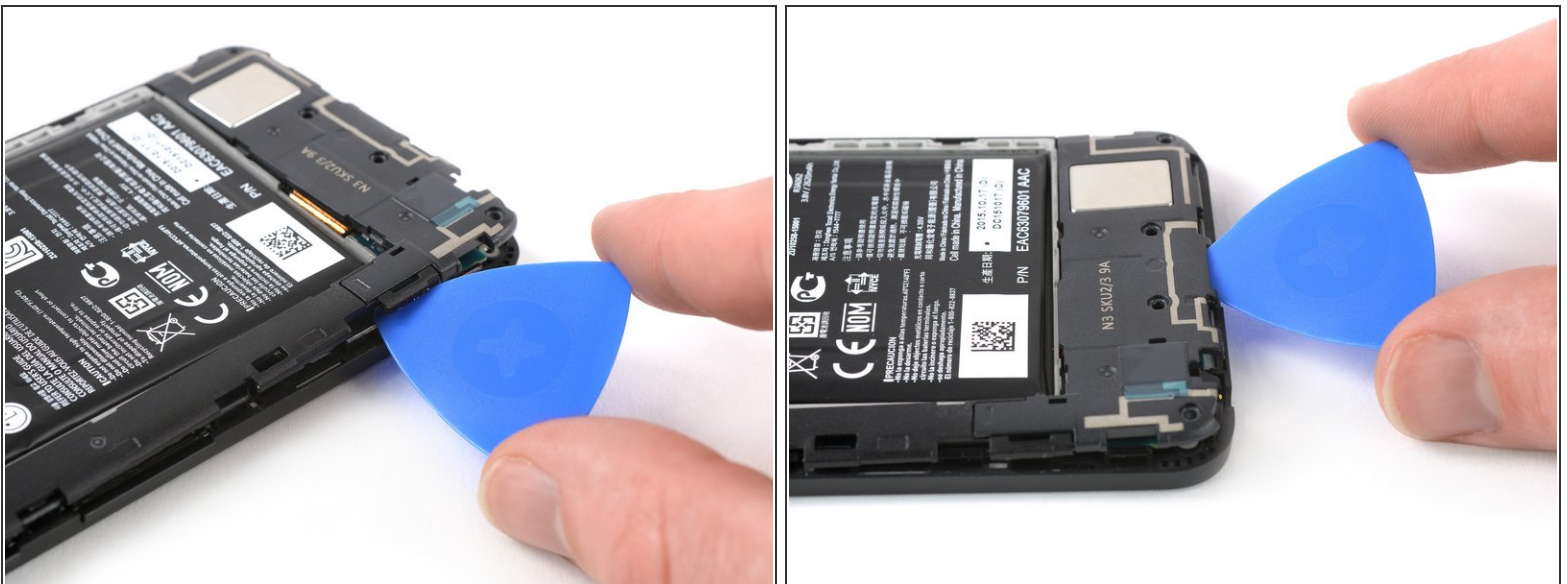
- Insert an opening pick into the SIM card tray slot and twist the opening pick sideways to release the plastic clips.

Step 7



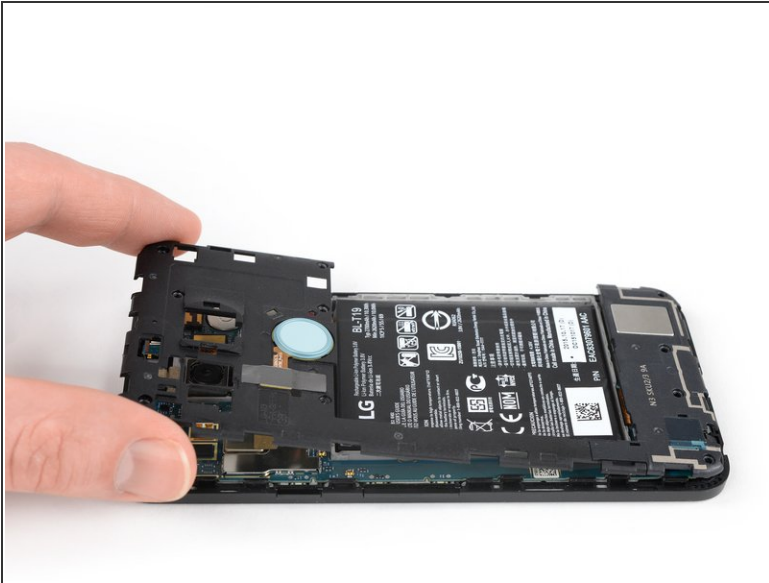
- Continue sliding the opening pick around the upper part of the midframe to release the plastic clips.

Step 8



- Use the plastic pick to pry open the plastic clips on the long edge of the midframe and on the bottom edge.
- ⚠ Make sure the clips on the long edge are released. The midframe is prone to break here if they are not disconnected properly.

Step 9



- Make sure all the clips are free.
- Carefully remove the midframe.

Step 10 — Battery Disconnect



- Use the edge of a spudger to pry up and disconnect the battery flex cable located at the bottom right of the motherboard.


Step 11 — Battery




- [Use an iOpener](#) to loosen the adhesive beneath the battery. Apply the iOpener on the back of the phone for at least two minutes.

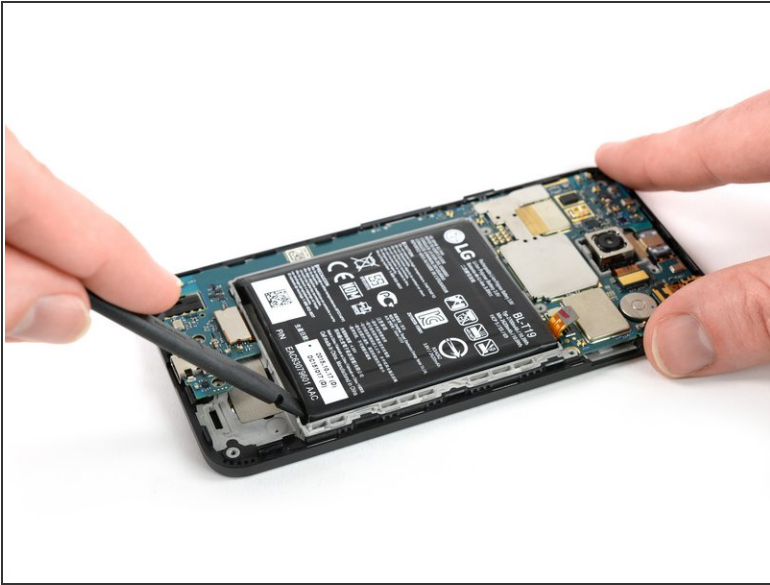
Step 12



 Try your best not to deform the battery during the following removal process. Soft-shell lithium-ion batteries can leak dangerous chemicals, catch fire, or even explode if damaged. Do not use excessive force or pry at the battery with metal tools.

- Insert the flat end of a spudger under the bottom left corner of the battery and gently pry upwards.
-  The adhesive is only located beneath the edges of the battery so there's no need to pry beneath its center.
- If you are having trouble prying up the battery, the adhesive may not be loose enough. You can apply some isopropyl alcohol under each corner of the battery and allow it to penetrate for several minutes to help weaken the adhesive.

Step 13



- Insert the flat end of a spudger under the bottom right corner of the battery and gently pry upwards to loosen the remaining adhesive.

Step 14



- Remove the battery.

⚠ Do not reuse the battery after it has been removed, as doing so is a potential safety hazard. Replace it with a new battery.

✦ Before installing a new battery remove any remaining adhesive from the phone, and clean the glued areas with isopropyl alcohol and a lint-free cloth.

✦ Secure the new battery with pre-cut adhesive or double-sided adhesive tape. In order to position it correctly, apply the new adhesive into the phone at the places where the old adhesive was located, not directly onto the battery. Press the new battery firmly into place for 5-10 seconds.

To reassemble your device, follow these instructions in reverse order.

If possible, turn on your phone and test your repair before installing new adhesive and resealing the phone.

For optimal performance, calibrate your newly installed battery: Charge it to 100%, and keep charging it for at least two more hours. Then, use it until it shuts off due to low battery. Finally, charge it uninterrupted to 100%.

Take your e-waste to an [R2 or e-Stewards certified recycler](#).

Repair didn't go as planned? Check out our [Nexus 5X Answers community](#) for troubleshooting help.