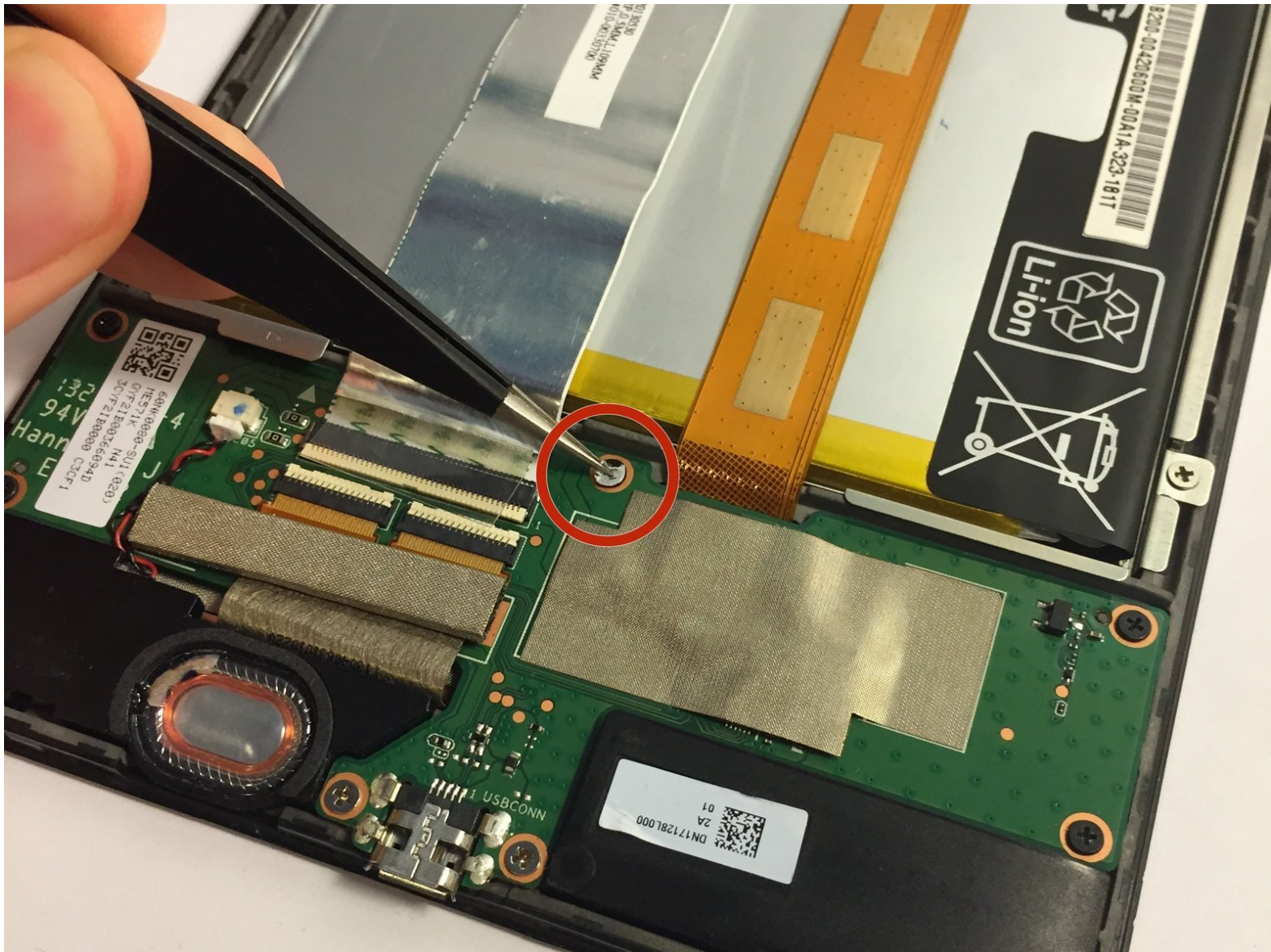




Nexus 7 2nd Generation Micro USB/Daughterboard Replacement

Replace the Micro USB/Daughterboard on your Nexus 7 2nd Generation.

Written By: Simon Krauter



INTRODUCTION

This guide is for the removal of the daughterboard. The daughterboard contains the Micro USB port.



TOOLS:

- [Tweezers](#) (1)
- [Phillips #0 Screwdriver](#) (1)
- [iFixit Opening Tools](#) (1)




PARTS:

- [Nexus 7 \(2nd Gen\) Rear Case](#) (1)
- [Nexus 7 \(2nd Gen Wi-Fi\) Battery](#) (1)
- [Nexus 7 \(Wi-Fi 2nd Gen\) LCD Board](#) (1)
- [Nexus 7 \(2nd Gen LTE\) Charging Assembly](#) (1)

Step 1 — Back Cover




- Power down your device.
- Use your plastic opening tool to wedge between the seams around the sides of the device. Pry open each side, one at a time.

 Do not pry near the USB port at the base of the device as you may crack the rear panel.

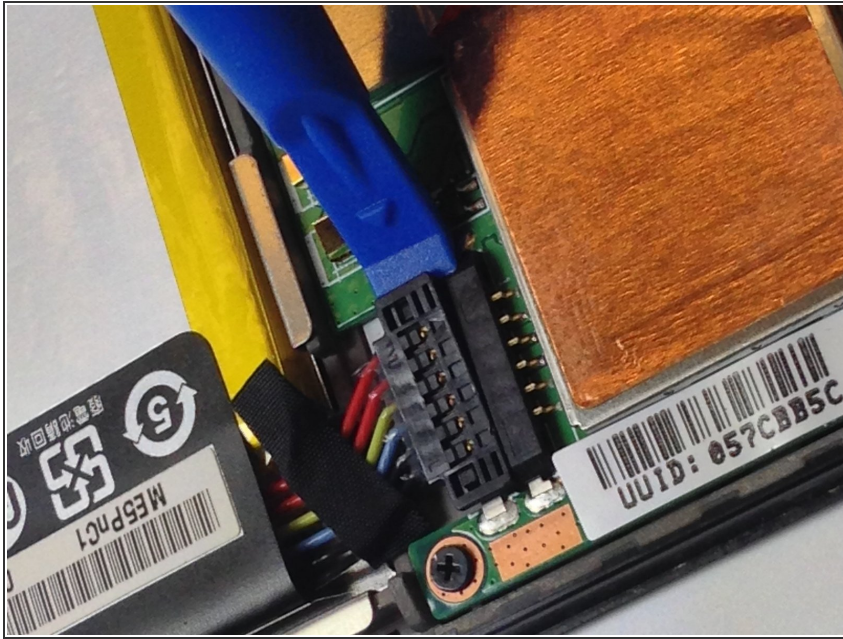
Step 2



- Work fingers around the seam between device and back cover. Use your plastic opening tool and fingers to separate each side until device and back cover are completely apart.

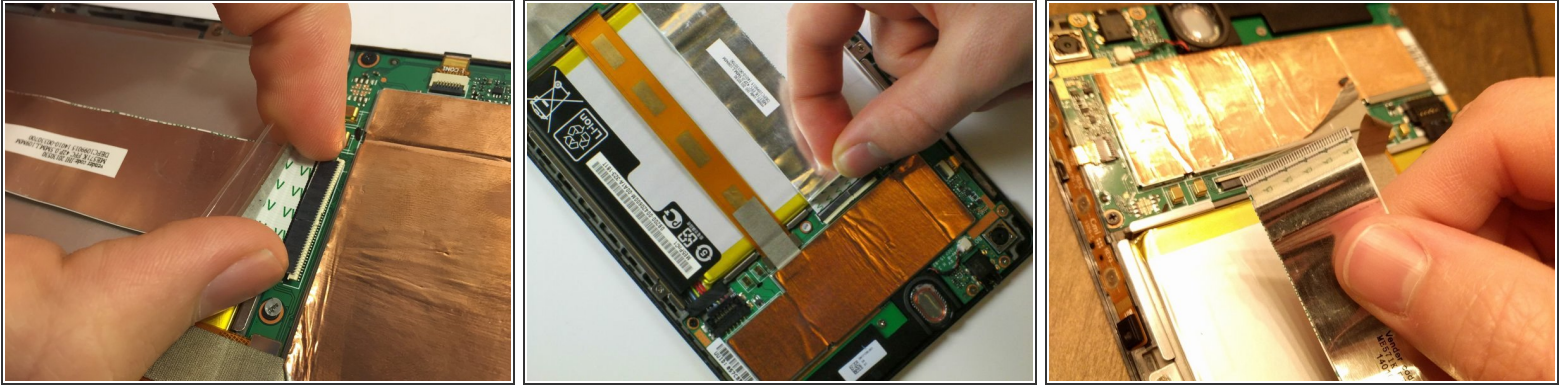
 Be careful around the corners. The body of the device can be fragile.

Step 3 — Battery



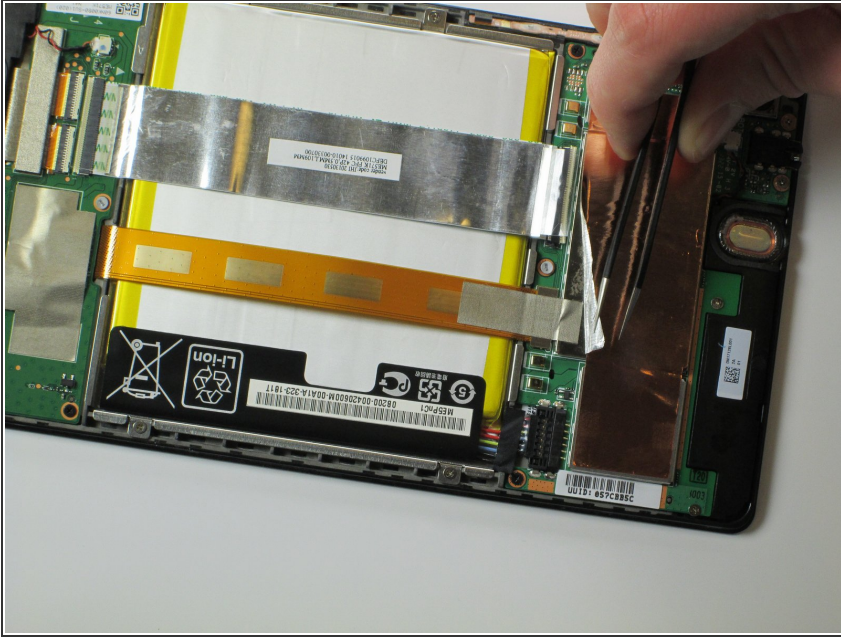
- Insert the plastic opening tool under the side edge of the battery connector, and gently pry upward to disconnect it.

Step 4



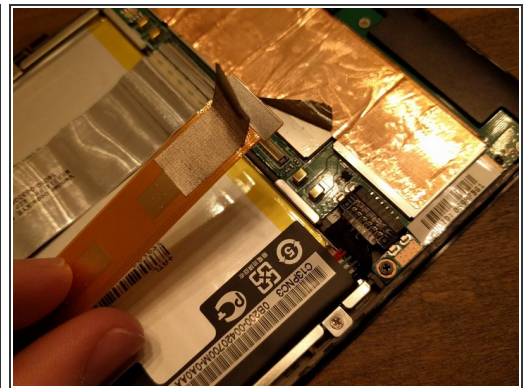
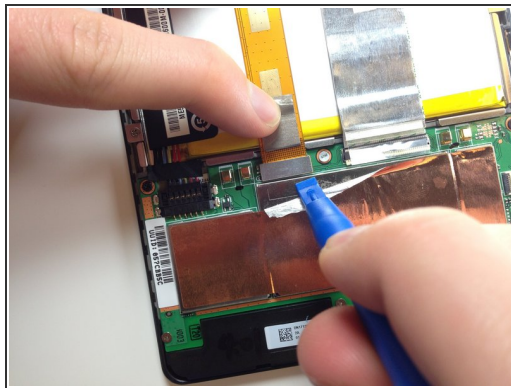
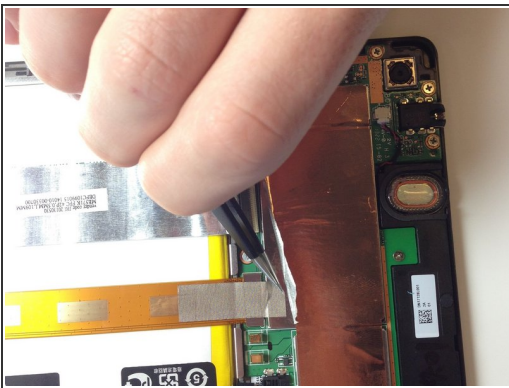
- Use the flat end of a spudger or your fingernail to flip up the clear protective flap on the ribbon cable ZIF socket.
- Using the flat end of a spudger or your fingernail, flip up the thin portion of the connector (opposite of the side where the cable inserts) to release the cable from its socket.
 - ⚠ DO NOT PRY the socket on the side where the cable inserts, or you may break the entire socket off the motherboard.
- Slide the cable out of the ZIF socket.
- ❗ For more info on how to disconnect ZIF connectors, check out the [Recognizing & Disconnecting Cable Connectors guide](#).

Step 5



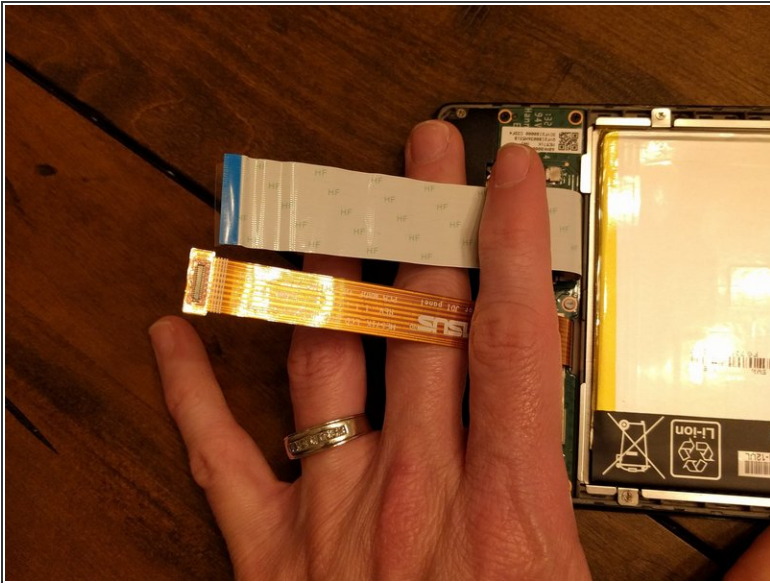
- Peel protective foil cover back top of mother board to expose orange ribbon connection.
- ⓘ The ribbon connections should now be fully visible, with the plastic tabs exposed.

Step 6



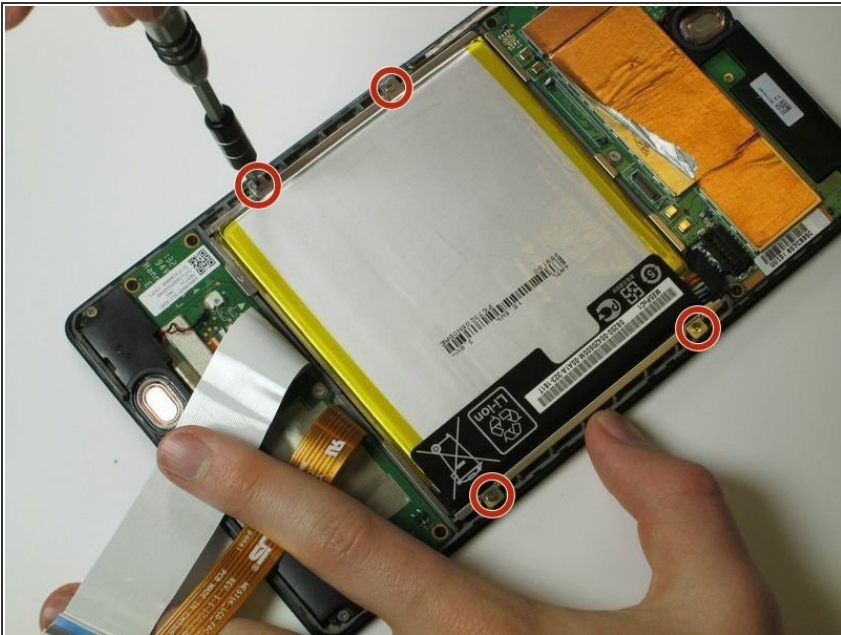
- Using the tweezers, peel back the silver protective foil on top of the orange ribbon connector.
- Using the plastic opening tool, pry upward under the orange ribbon connector. It will pop right out of place.

Step 7



- Now that the two main ribbons are disconnected, fold and hold them back with your fingers, or place the tweezers or a light object on the ribbons to keep them in place.

Step 8



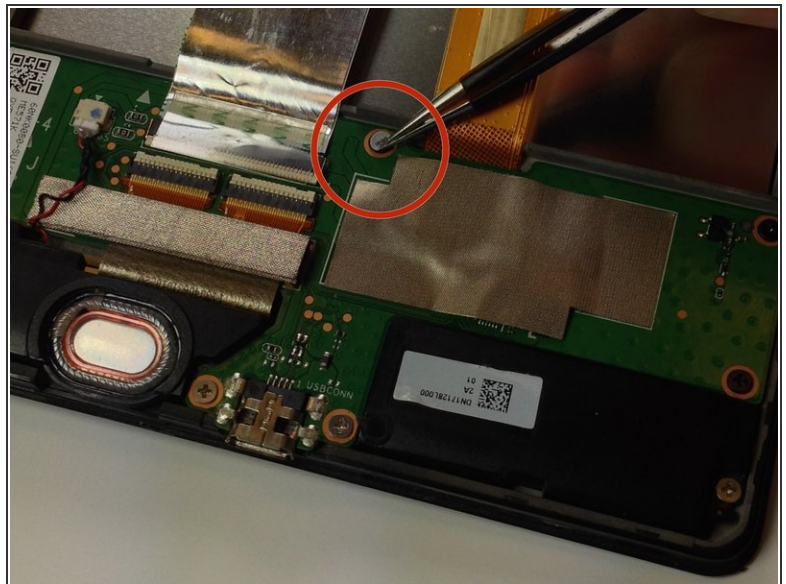
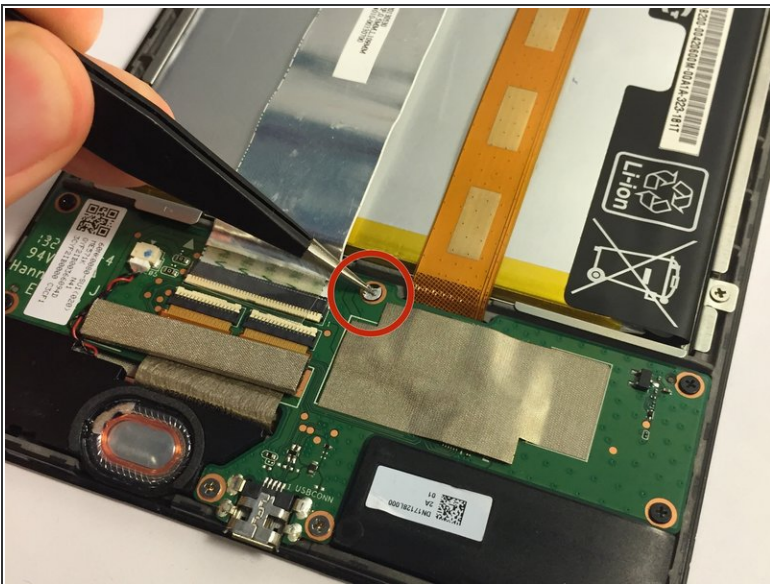
- Use the #0 Phillips Screwdriver to remove the four silver 3 mm Philips #0 screws from around the battery housing.

Step 9



- Remove the battery from your device by applying pressure at the base of the battery and lifting it out.

Step 10 — Micro USB/Daughterboard



- Remove the gray seal covering the top center screw on the daughterboard.



Be aware that this action will void your warranty.



Be sure to store the seal in a place where it will not get dirty and can retain its stickiness.

Step 11



- Using the Phillips #0 screwdriver, unscrew the 5 black 2 mm sized screws from around the edge of the daughterboard.
- Use the same Phillips #0 screwdriver to remove the two silver 3 mm sized screws from either side of the micro USB.

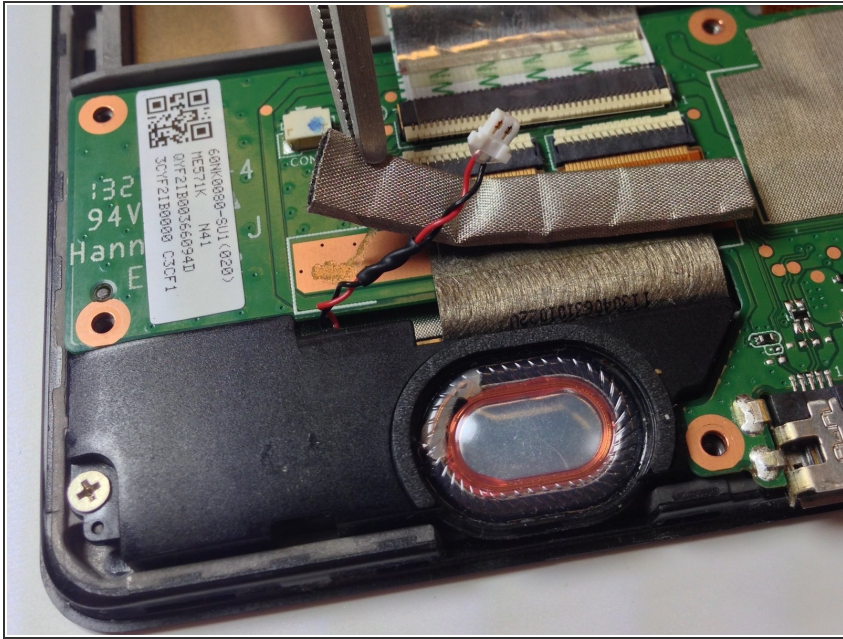
Step 12



- Use the tweezers to unplug the speaker connector from the daughterboard by pulling sideways.

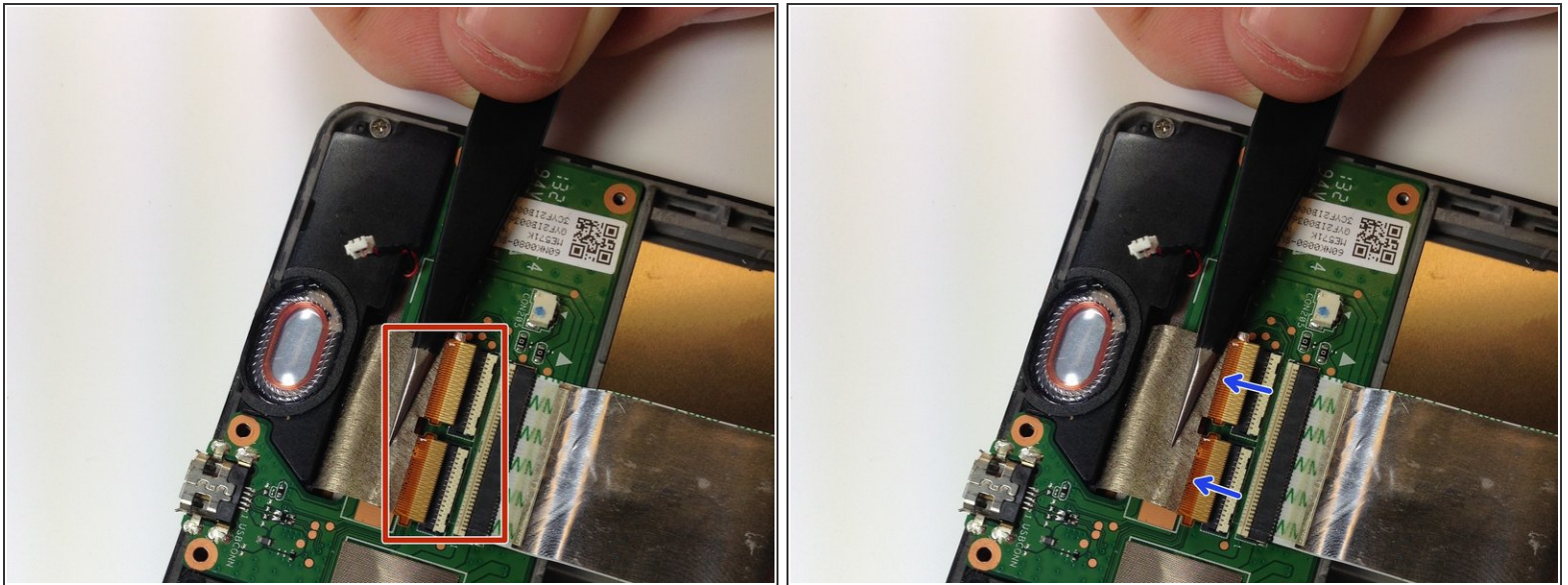
⚠ Be gentle in this step as this connector can be fragile. Do not pull upwards.

Step 13



- Slowly peel off the cover adhered to the pin connector with the tweezers.

Step 14



- Use the flat end of a spudger or your fingernail to carefully flip up both retaining flaps one each of the ZIF sockets.

ⓘ When disconnecting the ZIF sockets flip them outwards to the edge of the board/towards the cables respectively.

⚠ Be careful not to damage the pin connector. Pull parallel to the device, not up.

ⓘ For more info on how to disconnect ZIF connectors, check out the [Recognizing & Disconnecting Cable Connectors guide](#).

Step 15



- The daughterboard will now lift easily up and out of the device.

⚠ Use care during reassembly. This daughter board is a very sensitive part. It is easy to fry the digitizer part of this board if connections are made in the wrong order. Complete all other cable connections **before** connecting battery power.

To reassemble your device, follow these instructions in reverse order.