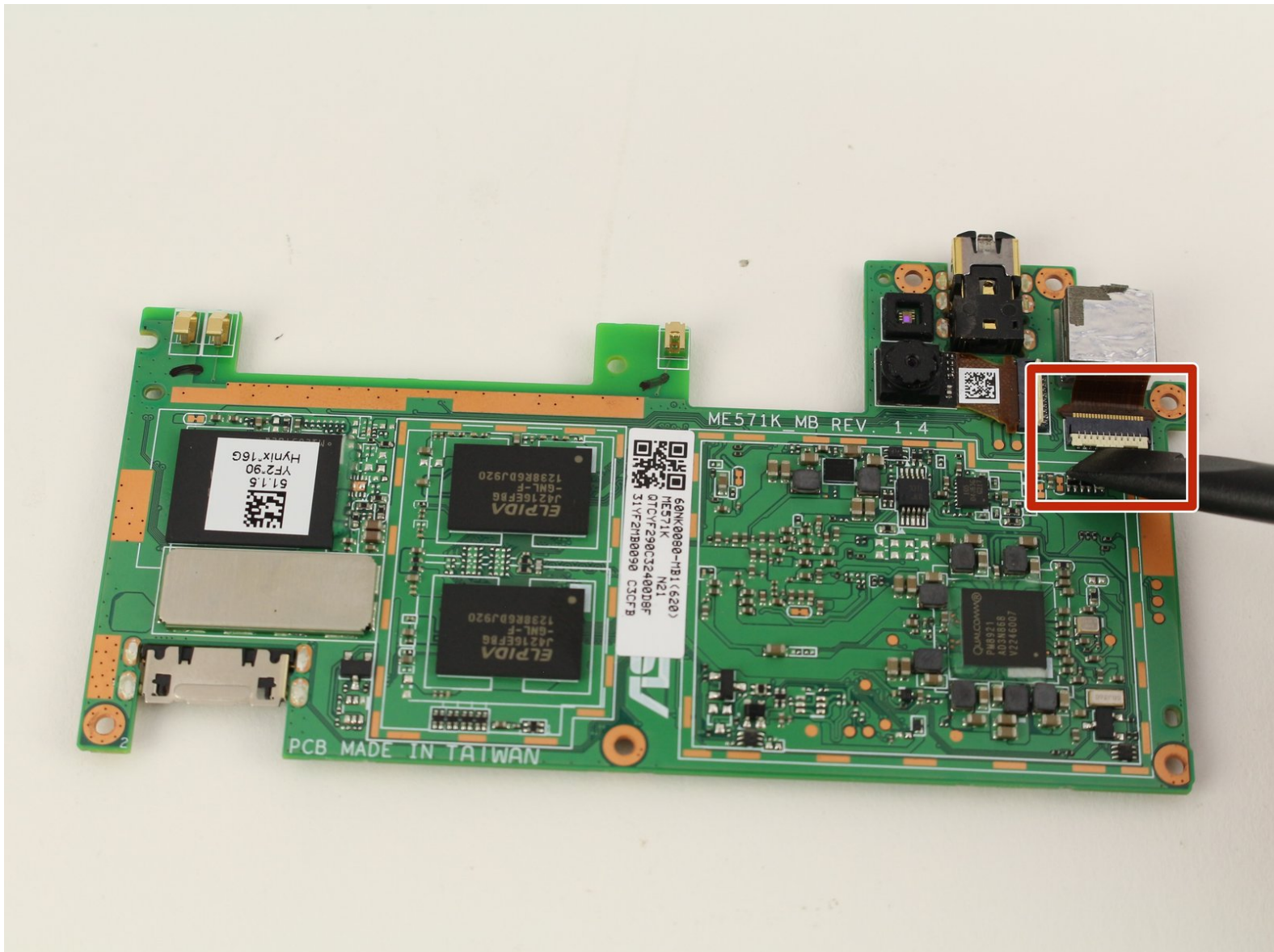




Nexus 7 2nd Generation Rear Facing Camera Replacement

Use this guide if you would like to replace your Nexus 7 2nd Generation rear facing camera.

Written By: Sarah Westberg



INTRODUCTION

If your Nexus 7 2nd Generation rear facing camera happens to stop working or is in need of replacement, look no further than this guide. You will need to remove the battery and motherboard in order to access the camera. Also worth noting, the rear facing camera may not come up with the motherboard during removal. The camera is adhered to the front case, so if it isn't present on the motherboard, look to the recess in the front case. Make sure to attach the camera's ribbon connector to the motherboard during replacement.



TOOLS:

- [iFixit Opening Tools](#) (1)
- [Phillips #0 Screwdriver](#) (1)
- [Tweezers](#) (1)
- [Tweezers](#) (1)



PARTS:

- [Nexus 7 \(2nd Gen\) Rear Case](#) (2)
- [Nexus 7 \(2nd Gen LTE\) Rear Case](#) (1)
- [Nexus 7 \(2nd Gen\) Replacement Battery](#) (1)
- [Nexus 7 \(2nd Gen Wi-Fi\) Battery](#) (1)
- [Nexus 7 \(Wi-Fi 2nd Gen\) LCD Board](#) (1)
- [Nexus 7 \(2nd Gen Wi-Fi\) Motherboard](#) (1)
- [Nexus 7 \(2nd Gen Wi-Fi\) Motherboard Ribbon Cable](#) (1)
- [Nexus 7 \(2nd Gen LTE\) Motherboard](#) (1)

Step 1 — Back Cover



- Power down your device.
- Use your plastic opening tool to wedge between the seams around the sides of the device. Pry open each side, one at a time.

⚠ Do not pry near the USB port at the base of the device as you may crack the rear panel.

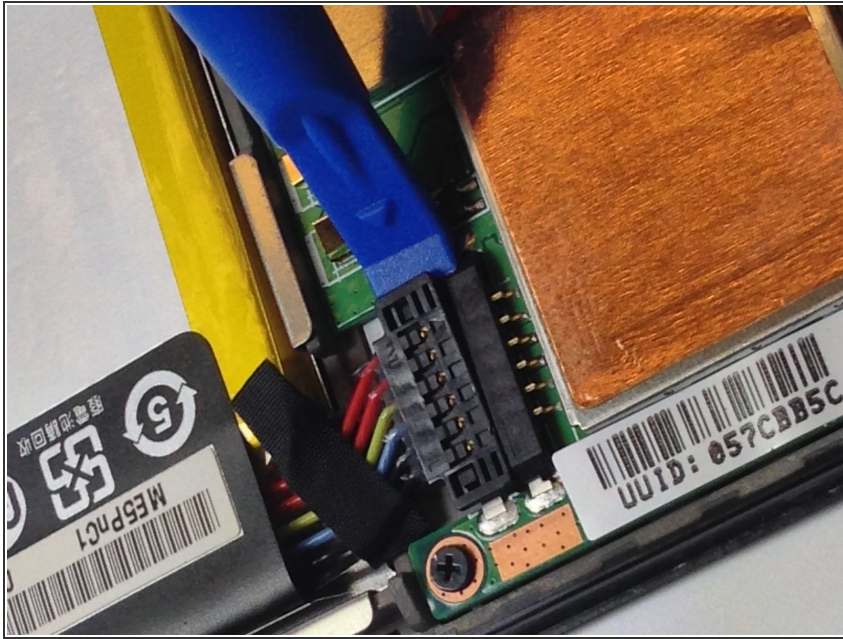
Step 2



- Work fingers around the seam between device and back cover. Use your plastic opening tool and fingers to separate each side until device and back cover are completely apart.

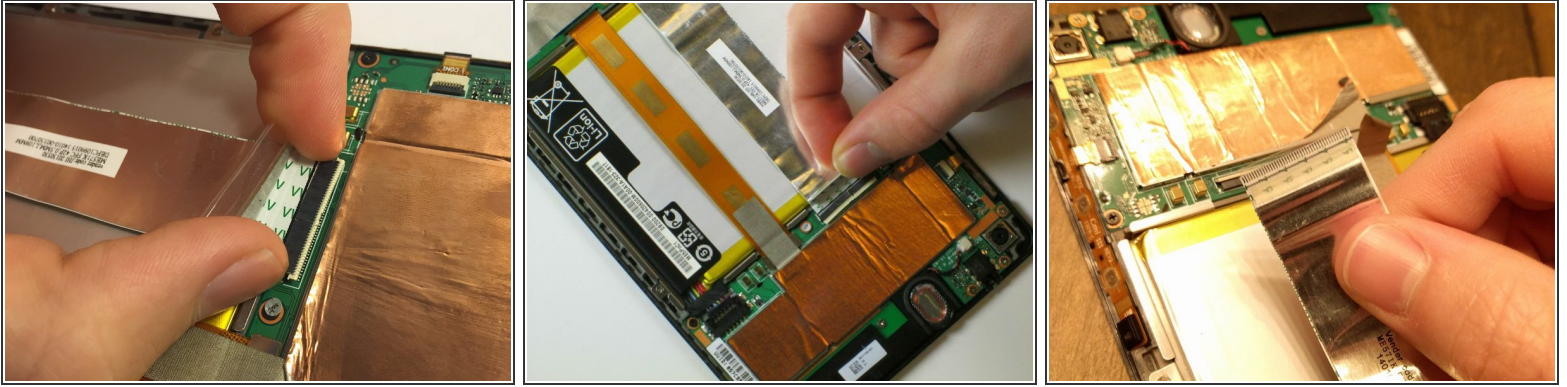
⚠ Be careful around the corners. The body of the device can be fragile.

Step 3 — Battery



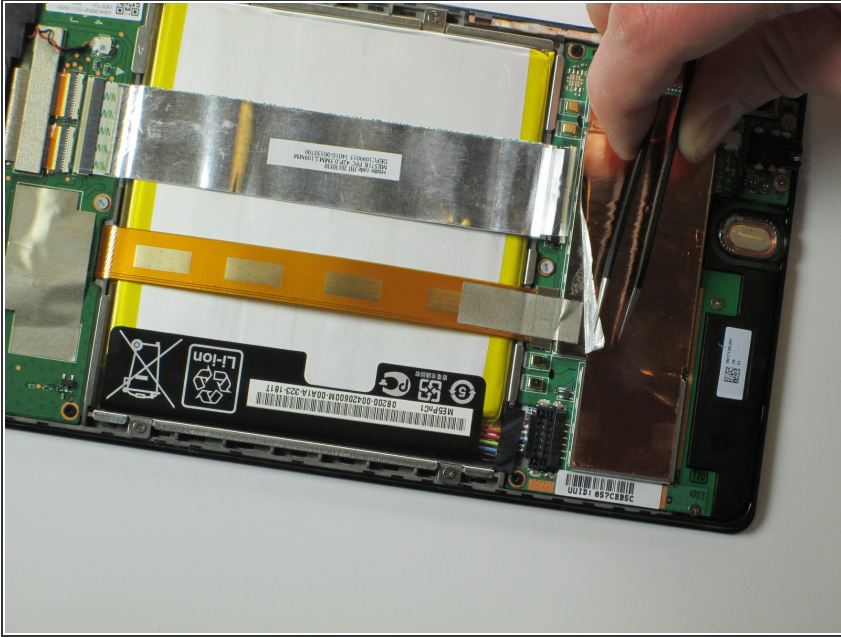
- Insert the plastic opening tool under the side edge of the battery connector, and gently pry upward to disconnect it.

Step 4



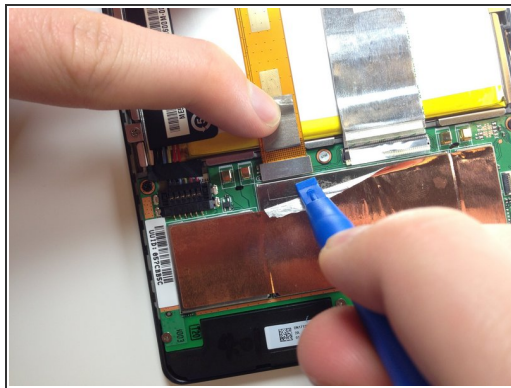
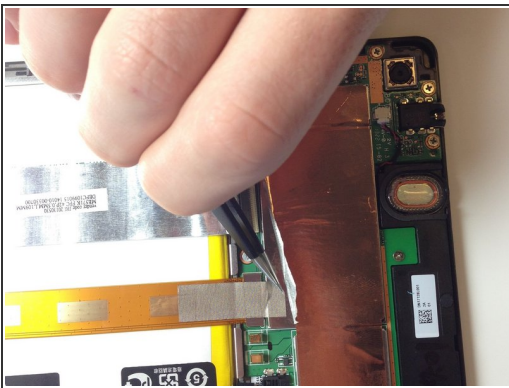
- Use the flat end of a spudger or your fingernail to flip up the clear protective flap on the ribbon cable ZIF socket.
- Using the flat end of a spudger or your fingernail, flip up the thin portion of the connector (opposite of the side where the cable inserts) to release the cable from its socket.
- ⚠ DO NOT PRY the socket on the side where the cable inserts, or you may break the entire socket off the motherboard.
- Slide the cable out of the ZIF socket.
- ❗ For more info on how to disconnect ZIF connectors, check out the [Recognizing & Disconnecting Cable Connectors guide](#).

Step 5



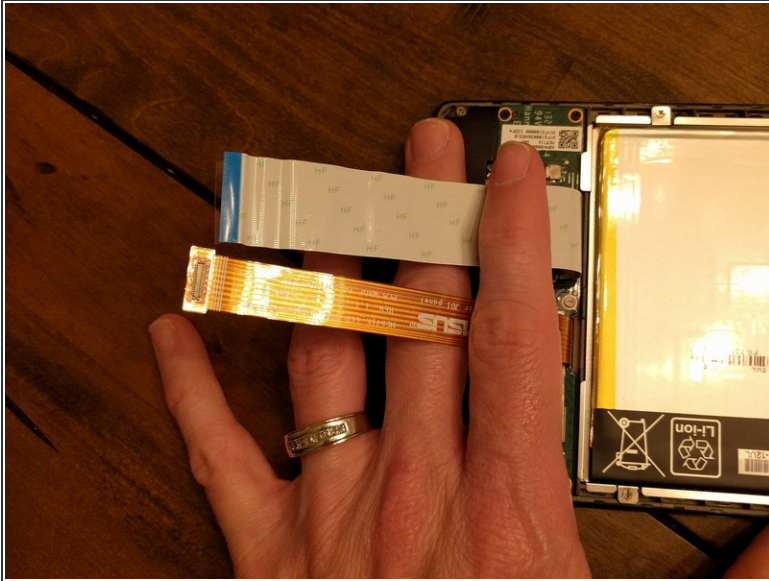
- Peel protective foil cover back top of mother board to expose orange ribbon connection.
- ❗ The ribbon connections should now be fully visible, with the plastic tabs exposed.

Step 6



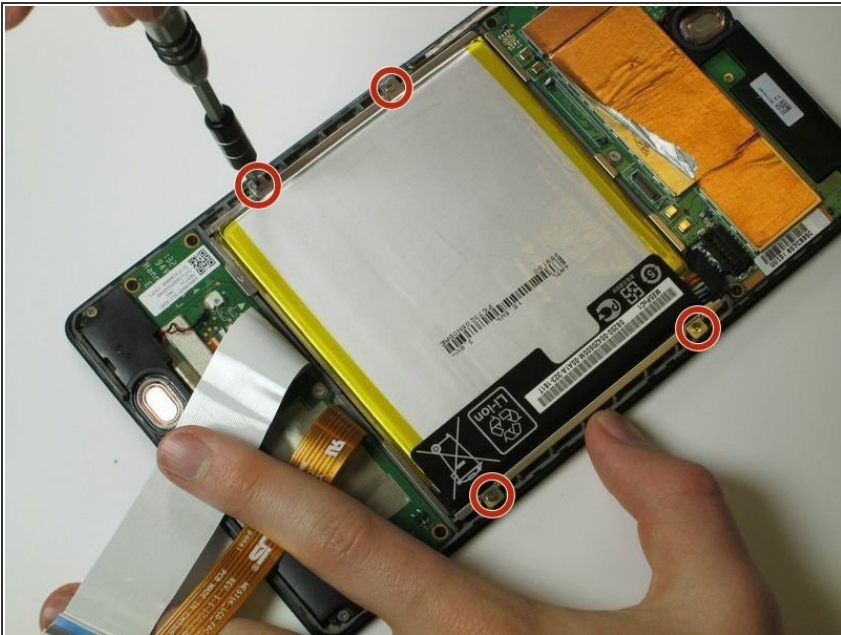
- Using the tweezers, peel back the silver protective foil on top of the orange ribbon connector.
- Using the plastic opening tool, pry upward under the orange ribbon connector. It will pop right out of place.

Step 7



- Now that the two main ribbons are disconnected, fold and hold them back with your fingers, or place the tweezers or a light object on the ribbons to keep them in place.

Step 8



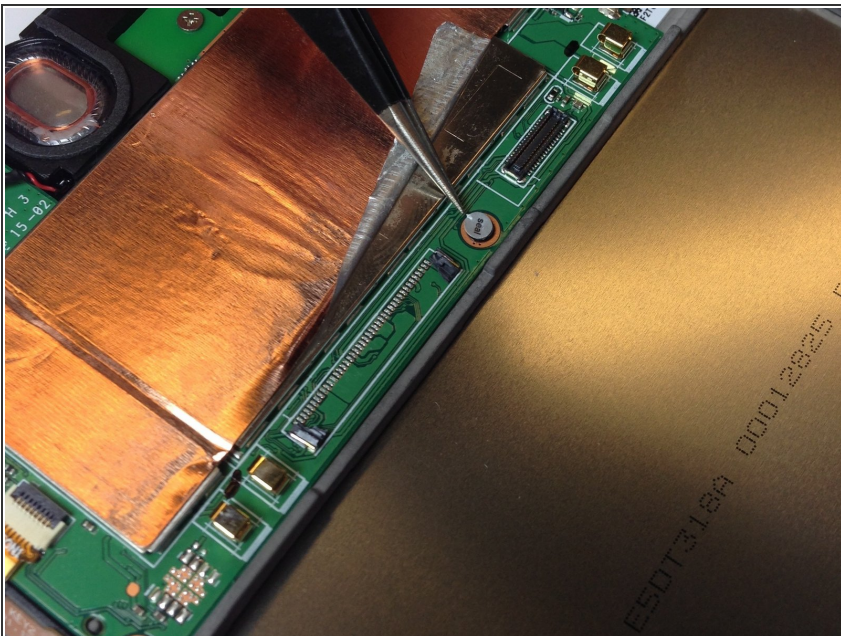
- Use the #0 Phillips Screwdriver to remove the four silver 3 mm Philips #0 screws from around the battery housing.

Step 9



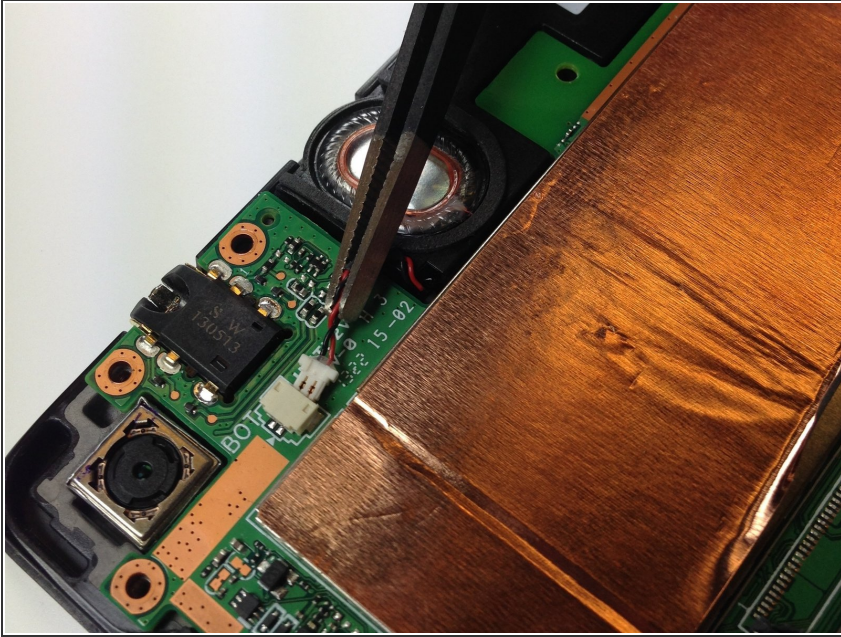
- Remove the battery from your device by applying pressure at the base of the battery and lifting it out.

Step 10 — Motherboard



- Use the tweezers to peel the seal sticker off of the center screw that is closest to the battery.
- ⓘ Make sure to store the seal in a place where it will not get dirty and will retain its stickiness.

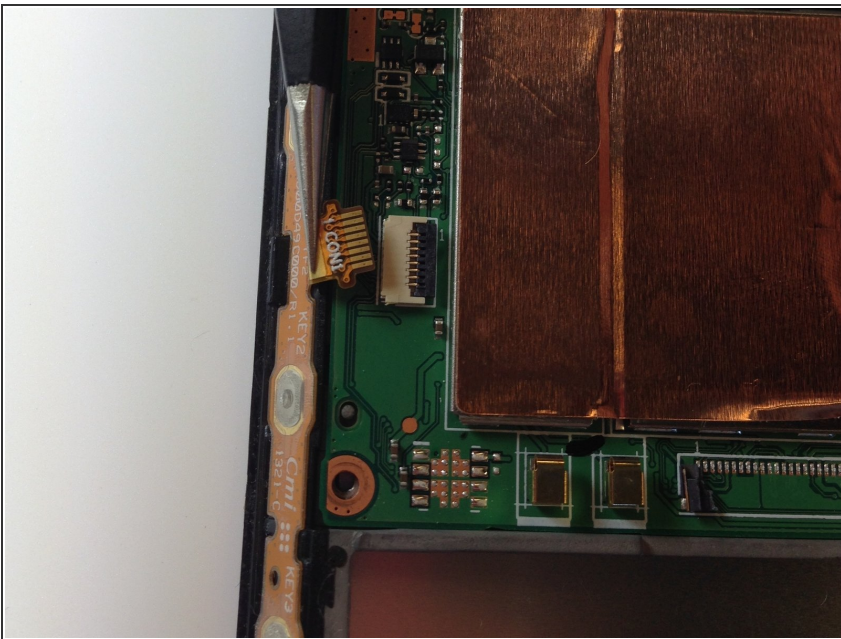
Step 11



- Using the tweezers, or carefully with your fingers, disconnect the speaker from its motherboard connection by pulling directly sideways.

⚠ Do not pull upwards. Doing so may warp or damage the connector.

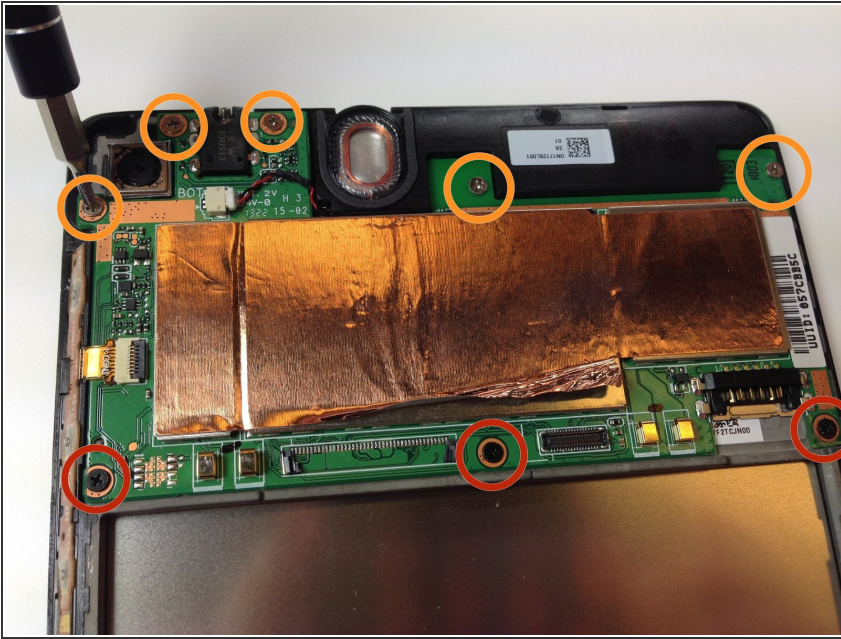
Step 12



- Use the flat end of a spudger or your fingernail to carefully flip up the retaining flap on the ribbon cable ZIF socket.

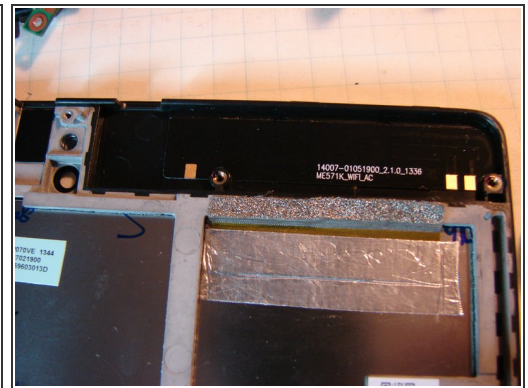
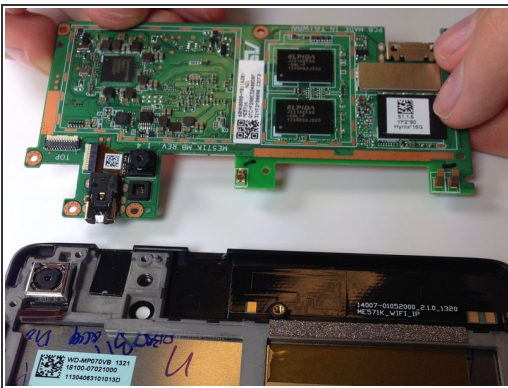
ⓘ For more info on how to disconnect ZIF connectors, check out the [Recognizing & Disconnecting Cable Connectors guide](#).

Step 13



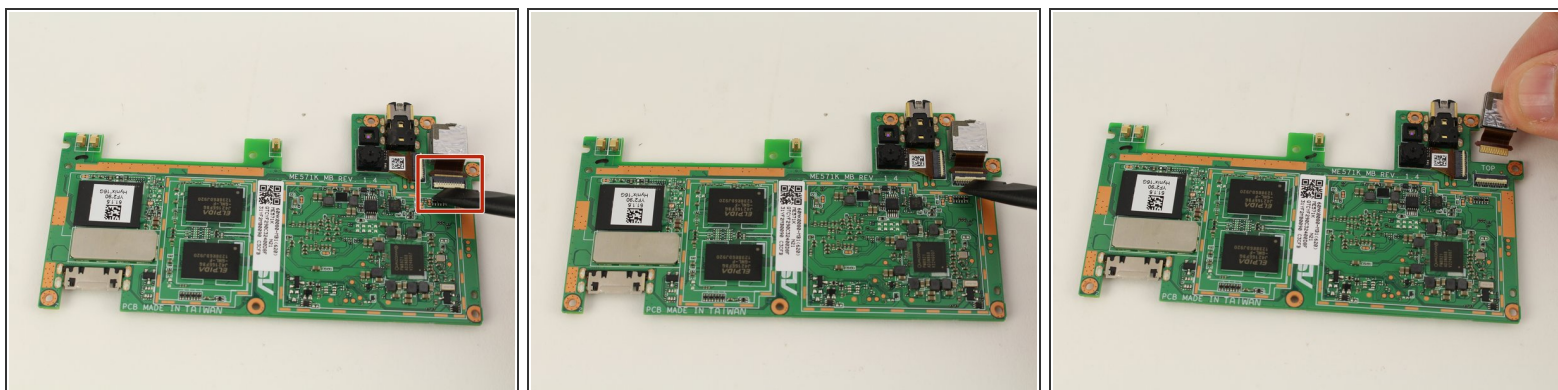
- Using the #0 Philips head screwdriver, remove the three black 2 mm screws holding the inner edge of the motherboard in place.
- Using the #0 Philips head screwdriver, remove the five silver 3 mm screws holding the outer edge of the motherboard in place.

Step 14



- Carefully lift the motherboard up from its edge and remove it from the tablet casing.
- ⚠ While the camera is connected directly to the motherboard from the bottom and might lift out of the tablet with the motherboard, it also might not. In this case, as shown, you'll need to use the tweezers to pry the camera out of its spot.
- ☑ Removing the motherboard will reveal the top speaker that was being held down. If you are planning on replacing the top speaker, you may now simply pick it out of the device.

Step 15 — Rear Facing Camera



- Flip the motherboard over.
- Using your black nylon spudger, pop up the locking bar of the camera's ZIF connector.
- Remove the rear facing camera from the motherboard.

To reassemble your device, follow these instructions in reverse order.