



Nexus 7 Display Assembly Replacement

Replace the Display Assembly in your Nexus 7.

Written By: Brett Hartt



INTRODUCTION

A broken display is something that every tablet owner has nightmares over. Use this guide to replace a damaged, faulty, or broken display assembly (includes the LCD and digitizer).



TOOLS:

- [Phillips #00 Screwdriver](#) (1)
- [iFixit Opening Tools](#) (1)
- [Spudger](#) (1)



PARTS:

- [Nexus 7 \(1st Gen\) Screen](#) (1)
- [Nexus 7 \(1st Gen Wi-Fi\) Screen Assembly](#) (1)
- [Nexus 7 \(1st Gen\) Rear Panel](#) (1)
- [Nexus 7 \(1st Gen\) LCD Flex Cable](#) (1)

Step 1 — Rear Panel



i In the following steps you will release the clips (highlighted in red) along the perimeter of the Nexus 7's rear panel.

! Do not use excessive force while prying the clips. They can be easily broken.

Step 2



- Gently insert a plastic opening tool near the top of the Nexus 7 between the rear panel and the front panel assembly.
- Carefully run the plastic opening tool along the top edge to pry the rear panel away from the front panel assembly of the Nexus 7.

Step 3



- Insert the plastic opening tool between the rear panel and the front panel assembly near the power button and pry up at several points along the right edge of the Nexus 7.

Step 4



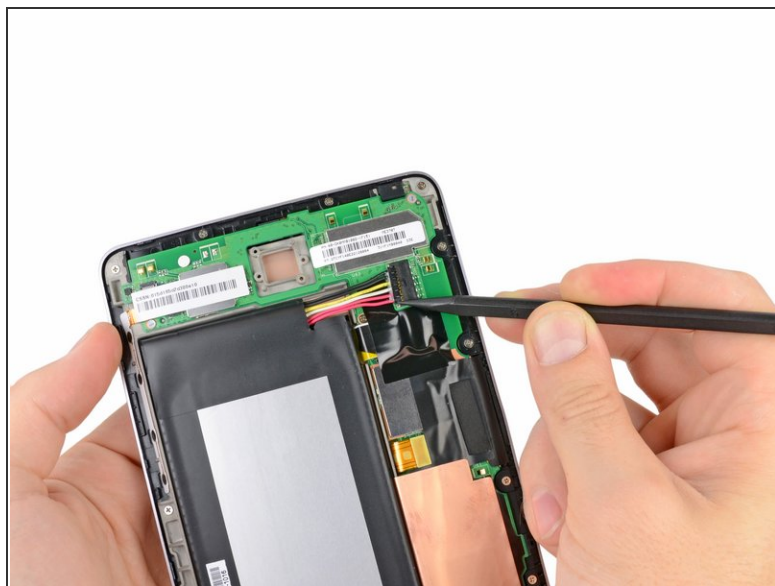
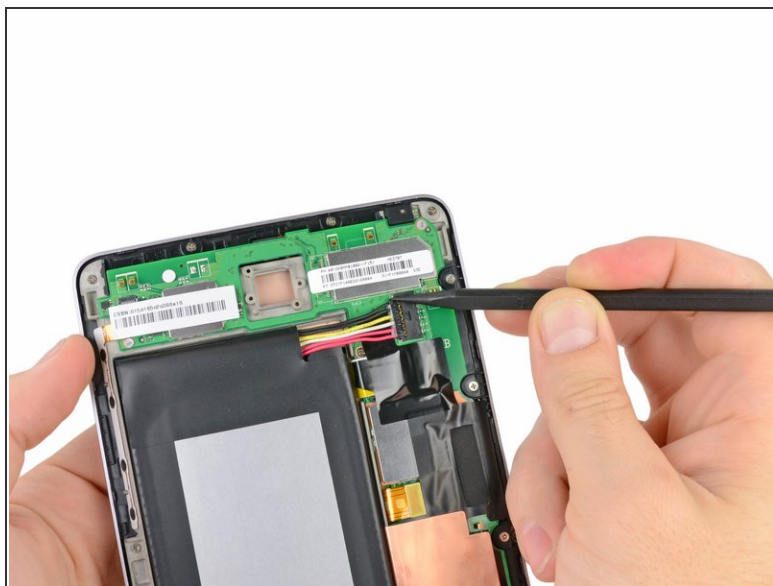
- Pry up the rear panel along the left edge using the method described in previous steps.

Step 5



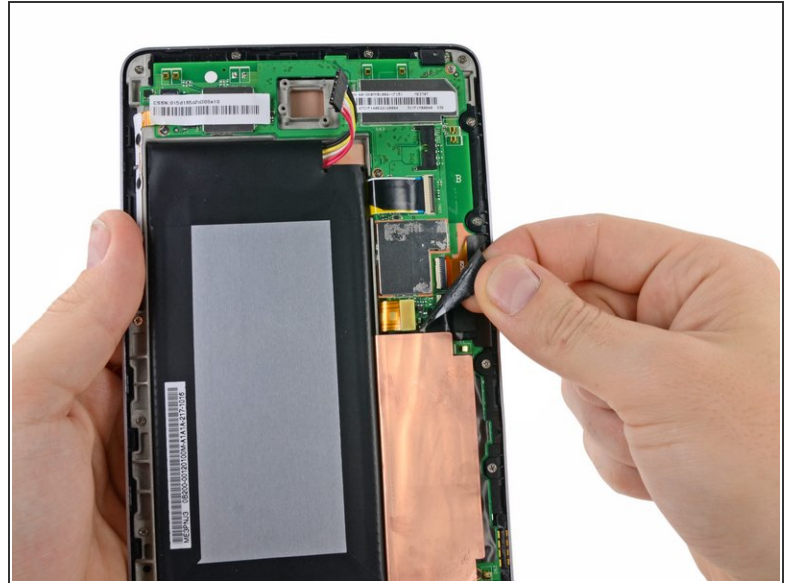
- Gently lift and remove the rear panel up off the front panel assembly.

Step 6 — Battery Cable



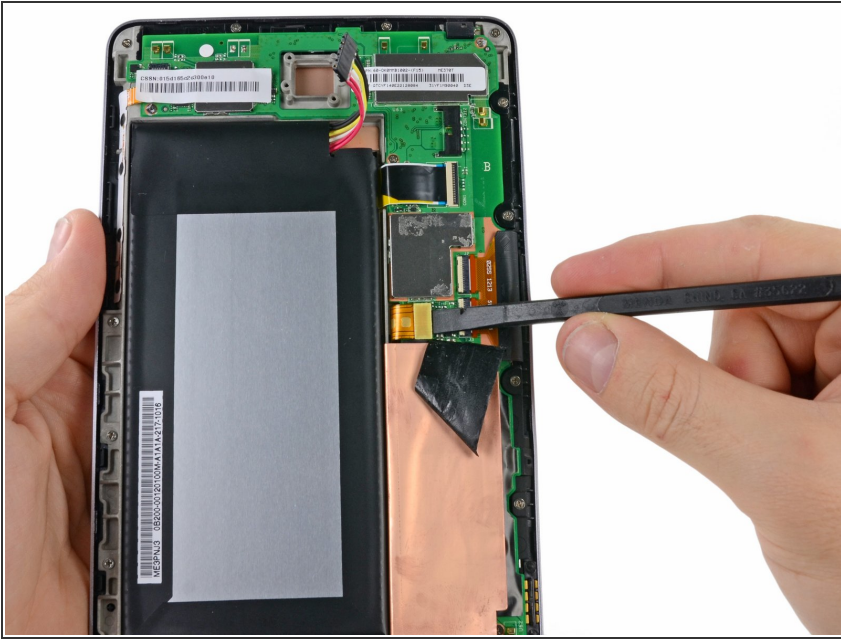
- Using the tip of a spudger, push first on one side then the other to "walk" the battery cable straight out of its socket on the motherboard.

Step 7 — Display Assembly



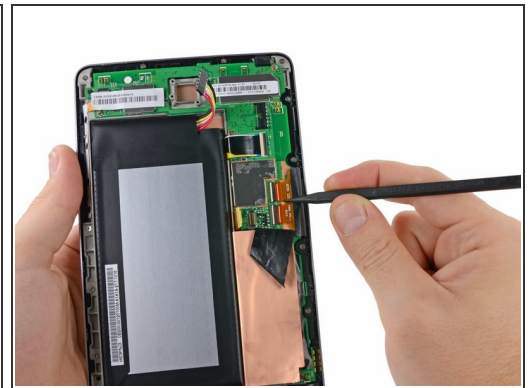
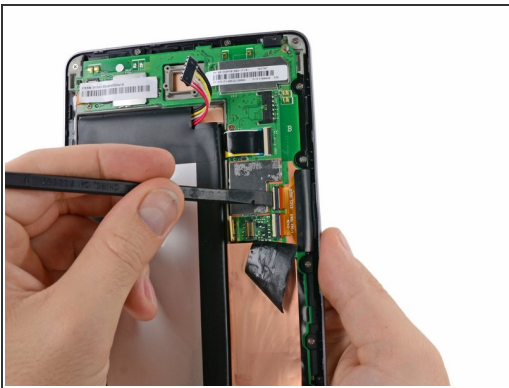
- Peel the upper piece of black adhesive tape completely up off the Nexus 7.
 - Similarly, peel the lower piece of black adhesive tape, but only as far as the copper strip.
 - ⓘ It is helpful to fold this piece of tape back on itself to keep it out of the way.
- ⚠ Whilst pulling the tape, be sure that the metal shield does not lift up. Hold the shield in place, and if it lifts up, re-seat it in the spring clips around the perimeter of the shielded area.

Step 8



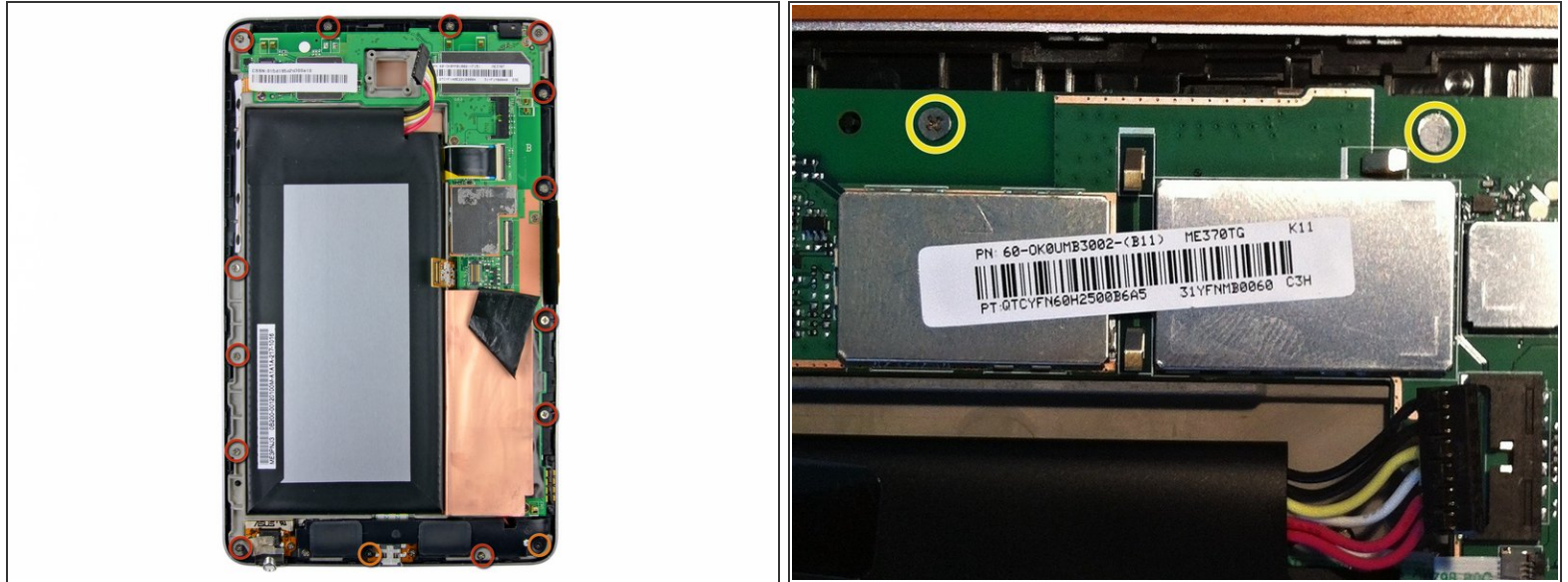
- Use the flat end of a spudger to pry the display data cable straight up off its socket on the motherboard.

Step 9



- Use the flat end of a spudger to carefully flip up the retaining flaps on the digitizer ribbon cable ZIF sockets.
- ⚠ Make sure you are flipping up the white retaining flaps, not the black sockets themselves.
- Use the tip of a spudger to pull the digitizer ribbon cable straight out of its socket.

Step 10



- Remove the following screws securing the display assembly to the metal frame:
 - Thirteen 3.2 mm silver Phillips screws
 - Two 4.25 mm black Phillips screws
 - In 3G models, the two top-center Phillips screws are slightly lower and on top of the motherboard.
- Note that the assembly for the non-3G model will NOT fit the 3G model. When looking for the 3G assembly, look for model 'ME370TG', and note that in pictures of the 3G version the top 2 Phillips screw holes are slightly lower than the upper right and left ones.

Step 11



i The display assembly is held in place by a large amount of adhesive on the underside of the large copper ESD shield. In the next few steps, you will be using a plastic spudger to release this adhesive.

! Work carefully and slowly, making sure to not break the I/O data cable.

Step 12

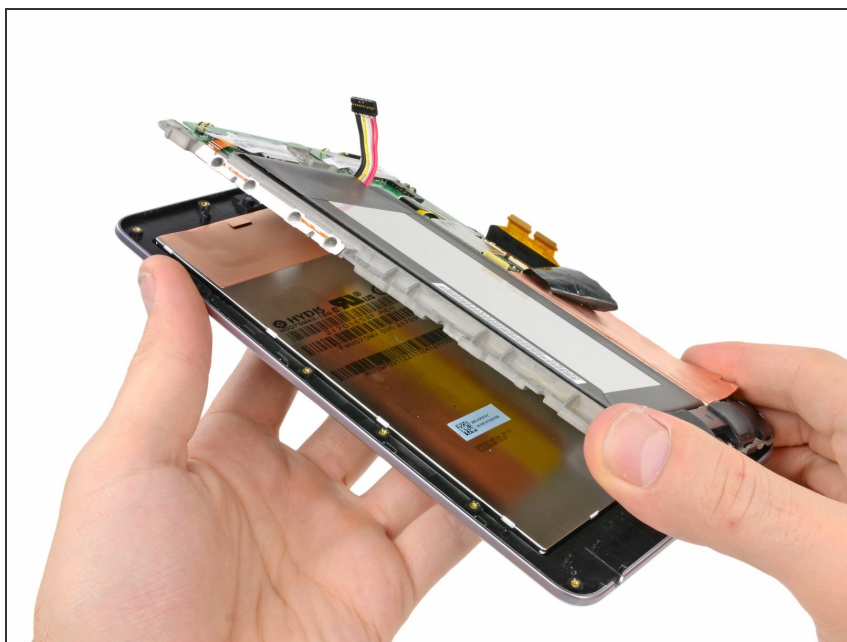


- Insert a plastic spudger on the left side of the Nexus 7, near the bottom of the battery.

! Only insert the spudger enough to free the adhesive (about halfway across the Nexus 7)—if you go any farther, you may damage the LCD cable.

- Slide the spudger toward the top of the Nexus 7, releasing the adhesive as you go.

Step 13



- Carefully rotate the metal frame away from the display assembly, minding any cables that may get caught.
- ⓘ You may need to apply heat to the display assembly before lifting it away from the device.
- Display assembly remains.

To reassemble your device, follow these instructions in reverse order.