



# Nexus 9 Motherboard Replacement

Replace the motherboard.

Written By: Geoff Wacker



# INTRODUCTION

Use this guide to replace the motherboard on your Nexus 9.



## TOOLS:

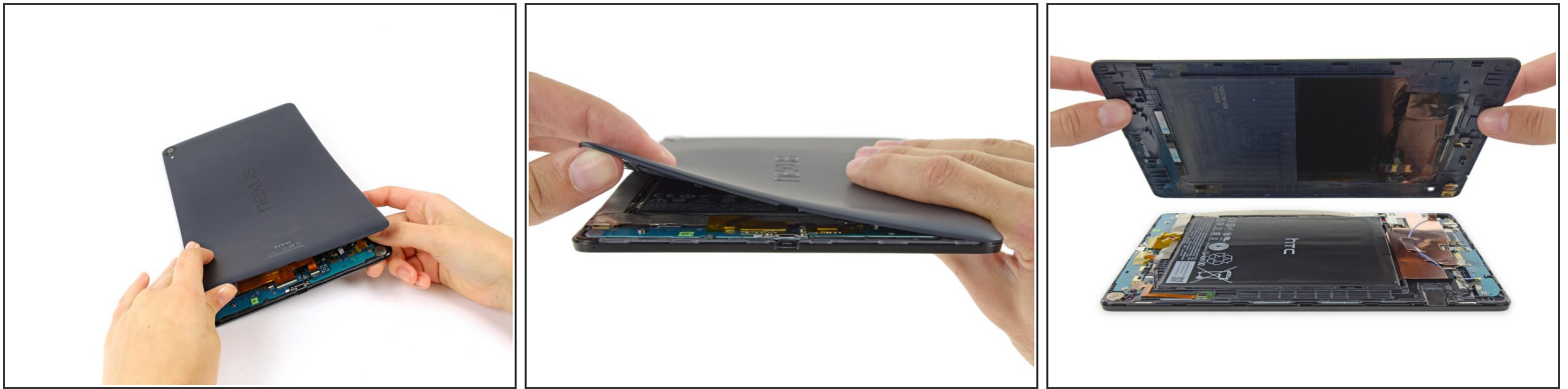
- [Spudger](#) (1)
- [T5 Torx Screwdriver](#) (1)
- [Phillips #000 Screwdriver](#) (1)
- [Tweezers](#) (1)



## PARTS:

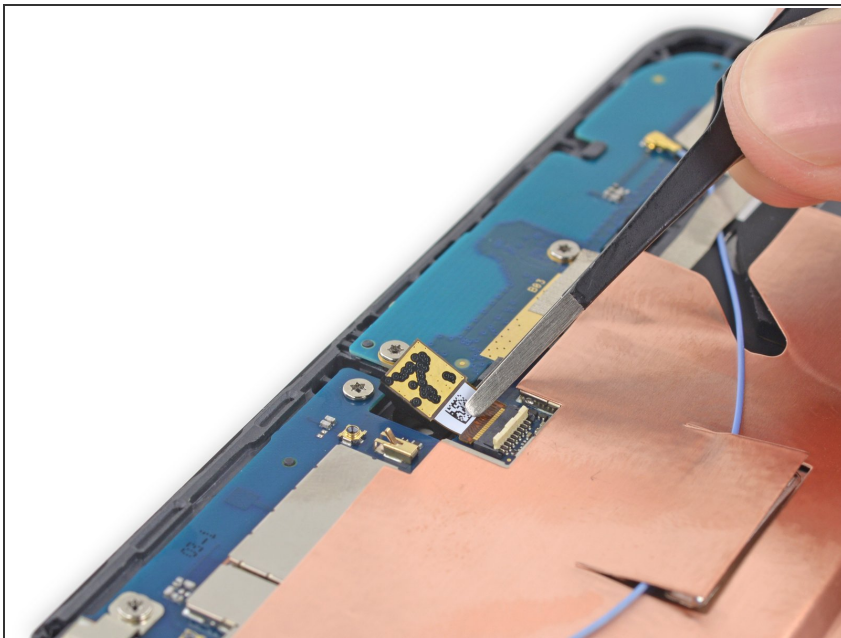
- [Nexus 9 Rear Panel](#) (1)
- [Nexus 9 Front Camera](#) (1)
- [Nexus 9 Battery](#) (1)
- [Nexus 9 Wi-Fi Antenna](#) (1)
- [Nexus 9 \(Wi-Fi\) Motherboard](#) (1)
- [Nexus 9 Screw Set](#) (1)

## Step 1 — Rear Case



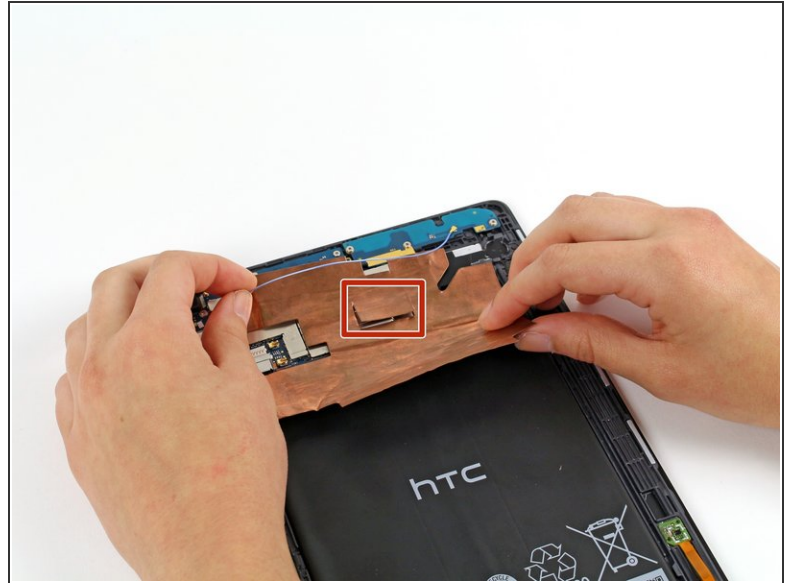
- With your fingers, carefully pry off the back plastic casing. Starting at the corners is usually the easiest.
- ⓘ The rear-facing camera seems to fit a little too snugly in its compartment on the rear case; so make sure that it stays connected to the motherboard.

## Step 2 — Front Facing Camera



- Use a spudger to disconnect the front-facing camera ZIF connector.
- Use a pair of tweezers to gently lift the front-facing camera up from the motherboard.

## Step 3 — Battery



- Carefully peel up the copper shielding with your fingers.
- Before fully removing the copper shielding, make sure that the blue antenna cable is out of the way of the copper tab.

## Step 4

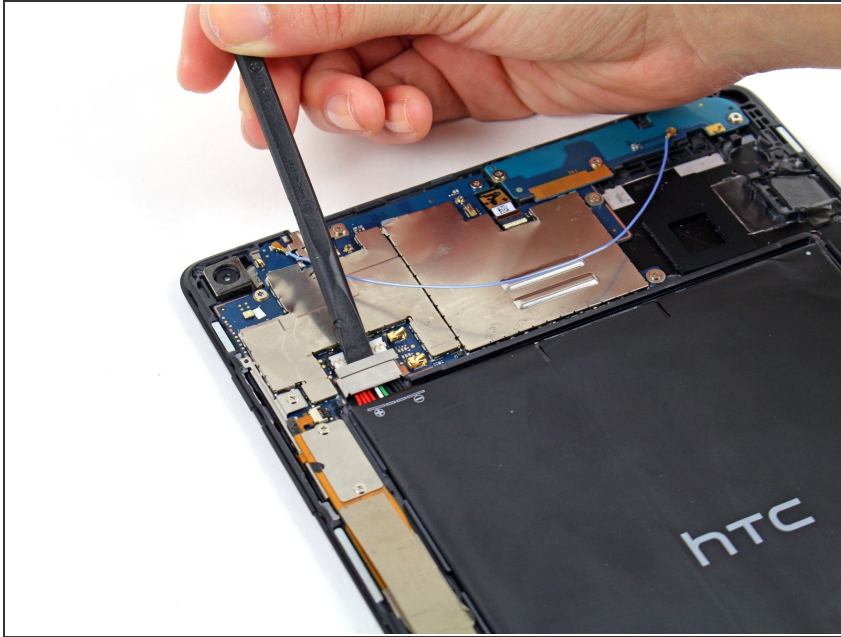


- Using the spudger tool, carefully remove the bottom of the battery from its location below the logic boards.
- The battery is attached to the motherboard with some adhesive, so you may need an iOpener to loosen up the adhesive. Check out the [iOpener guide](#) for info on how to do it.



- Do not pull the battery from the tablet yet, as it is still connected to the motherboard.

## Step 5



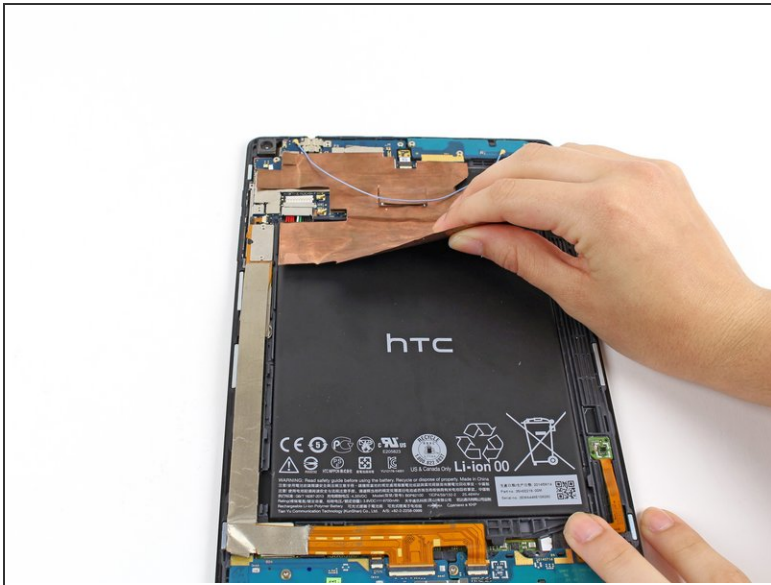
- Now remove the metal clip covering the battery's connector cable located above the top left of the battery with the spudger.
- After the metal clip is wiggled free, the battery's connector cable can be easily removed by just gently tugging it free.

## Step 6



- The battery should now lift free of the tablet.

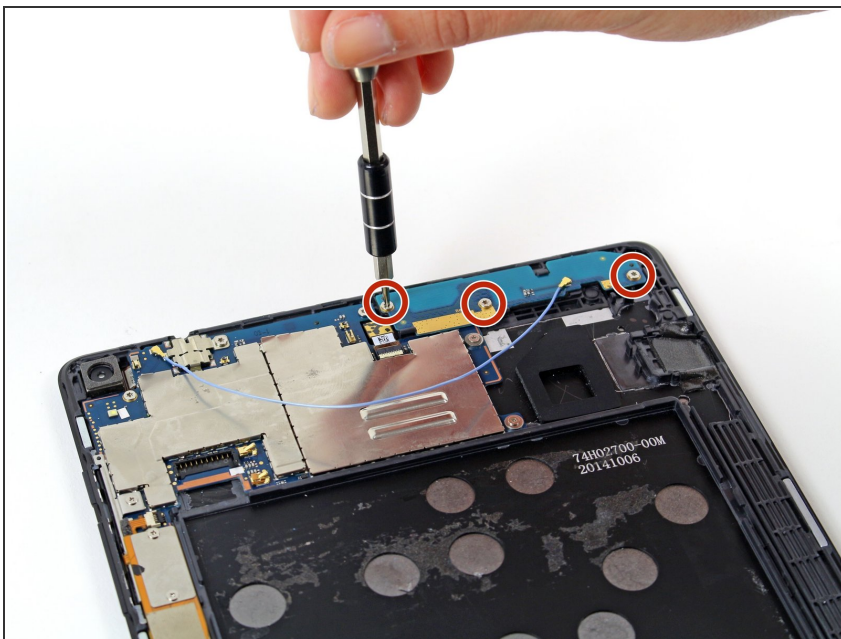
## Step 7 — Antenna Board



✦ This step is **not** necessary if you have already removed the battery.

- Carefully peel up the copper shielding with your fingers.
- Before fully removing the copper shielding, make sure that the blue antenna cable is out of the way of the copper tab.

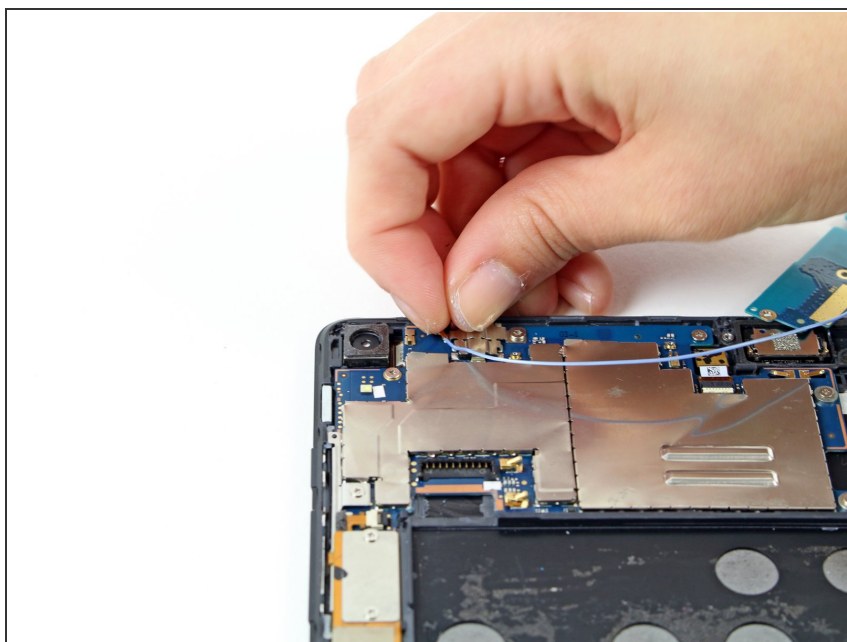
## Step 8



- Unscrew the three 3 mm Torx T5 screws on the antenna board.

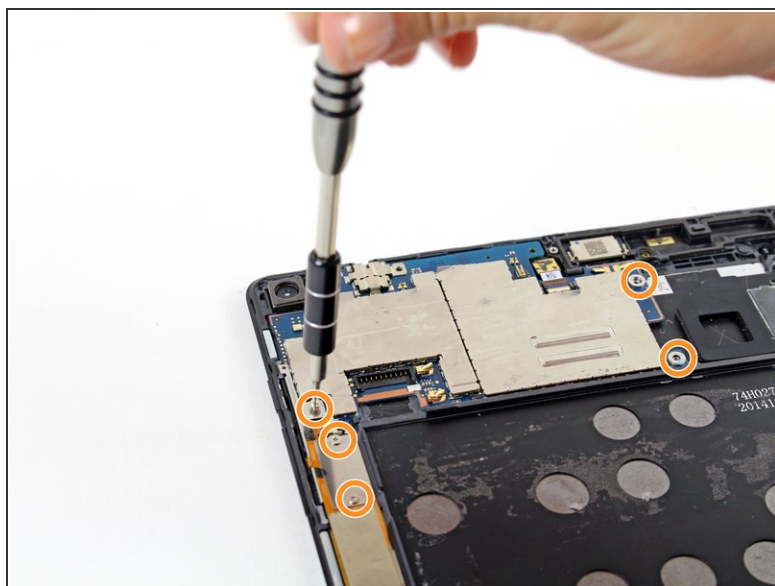
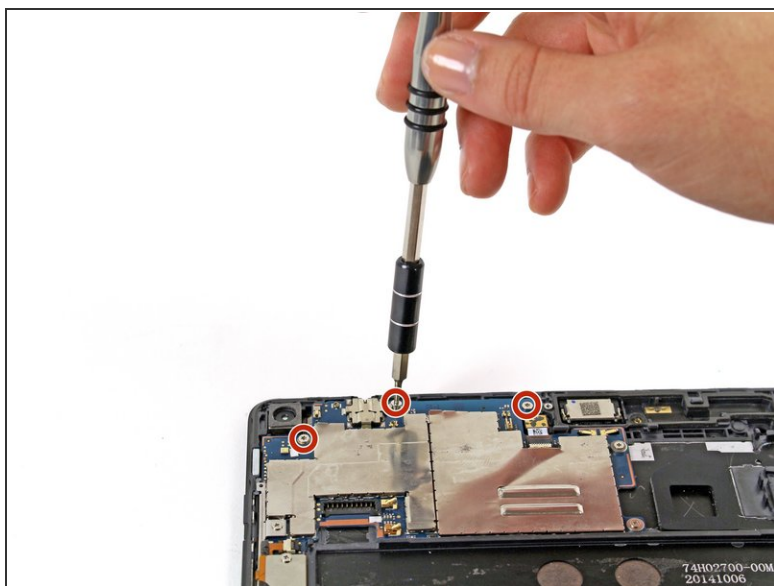
ⓘ This step and the next show the battery removed, but it is **not** necessary to remove it if you are only replacing the antenna board.

## Step 9



- Use your fingers or a pair of tweezers to disconnect the blue antenna cable from the motherboard.
- ⚠ When reinstalling the antenna, be sure to clean it with a degreaser such as windex or isopropyl alcohol. The oils on your fingers have the potential to create wireless interference.
- The antenna board should now lift free of the motherboard.

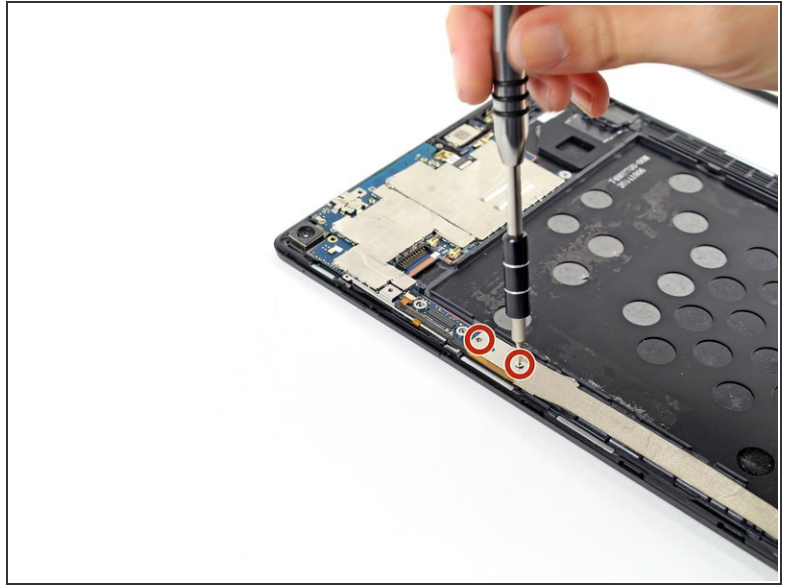
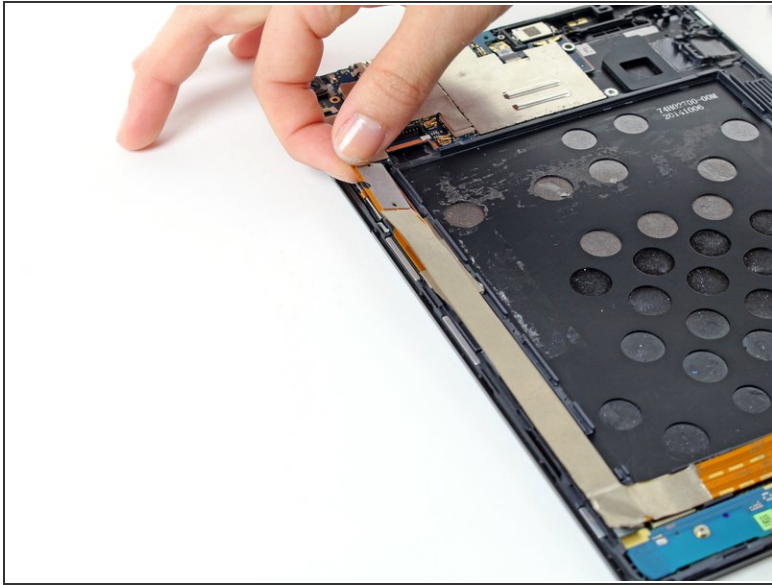
## Step 10 — Motherboard



- Remove the three 3 mm T5 Torx screws.
- Remove the five 2 mm Phillips #000 screws.

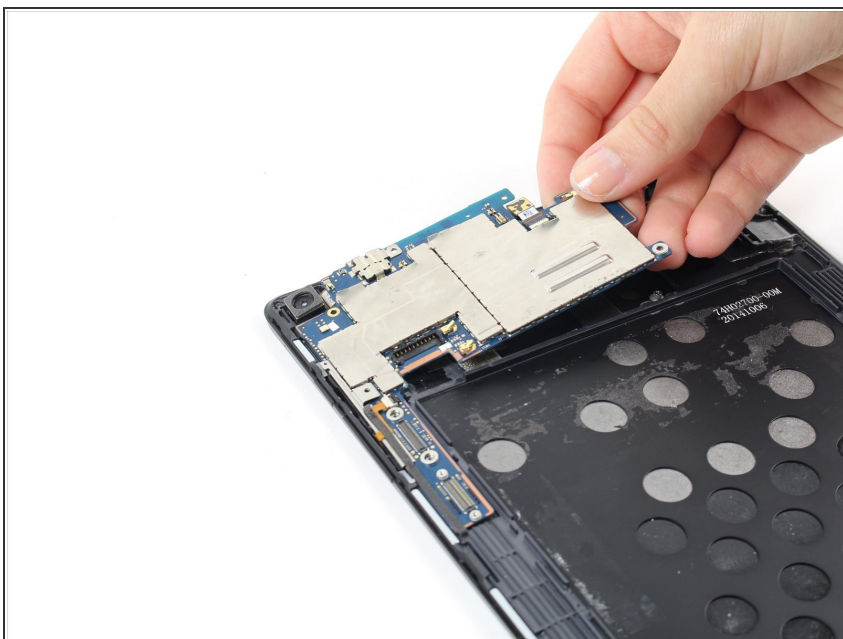


## Step 11



- Using your fingers, pull up on ribbon connector to expose another ribbon connector below.
- Remove the two 2 mm Phillips #000 screws on top of the second ribbon connector.
- Pull up the ribbon connector with your fingers.

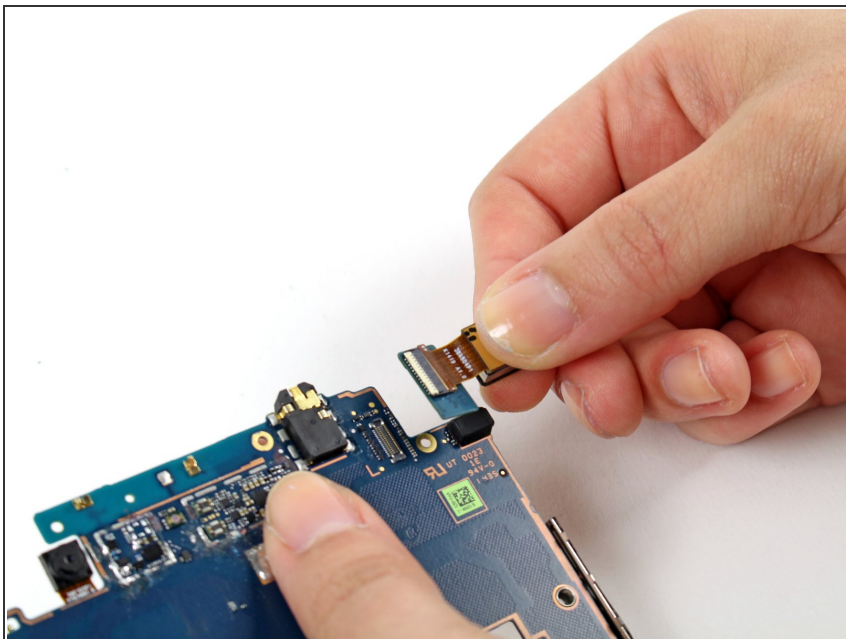
## Step 12



- Gently lift the motherboard up from the device.



## Step 13



- Refer to the [rear-facing camera replacement guide](#) to remove the rear-facing camera from the motherboard and transfer it to the new one.
- The motherboard remains.

To reassemble your device, follow these instructions in reverse order.