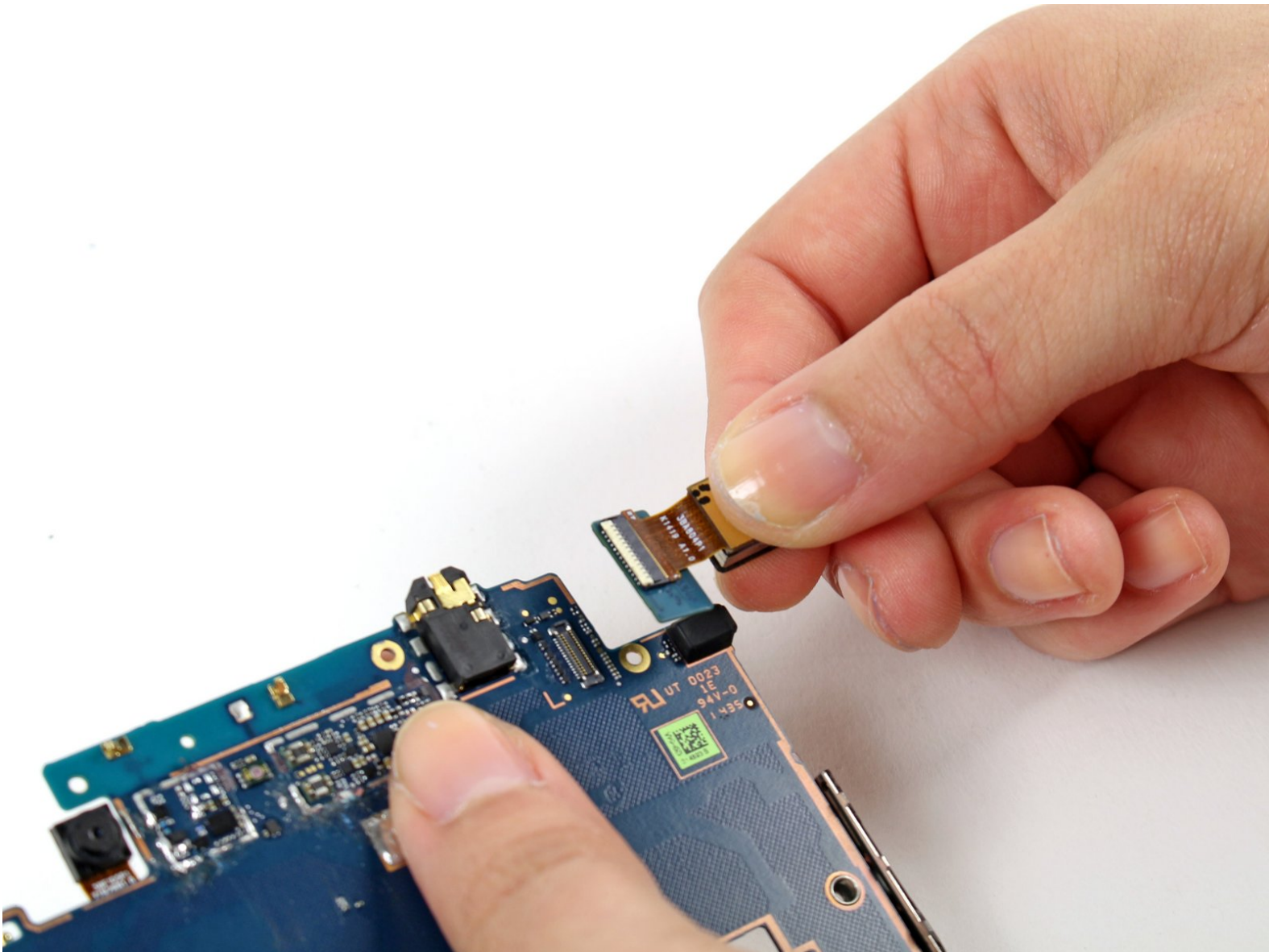




# Nexus 9 Rear Facing Camera Replacement

Replace the rear-facing camera.

Written By: Sergio Vargas



# INTRODUCTION

Use this guide to replace the rear-facing camera on your Nexus 9.



## TOOLS:

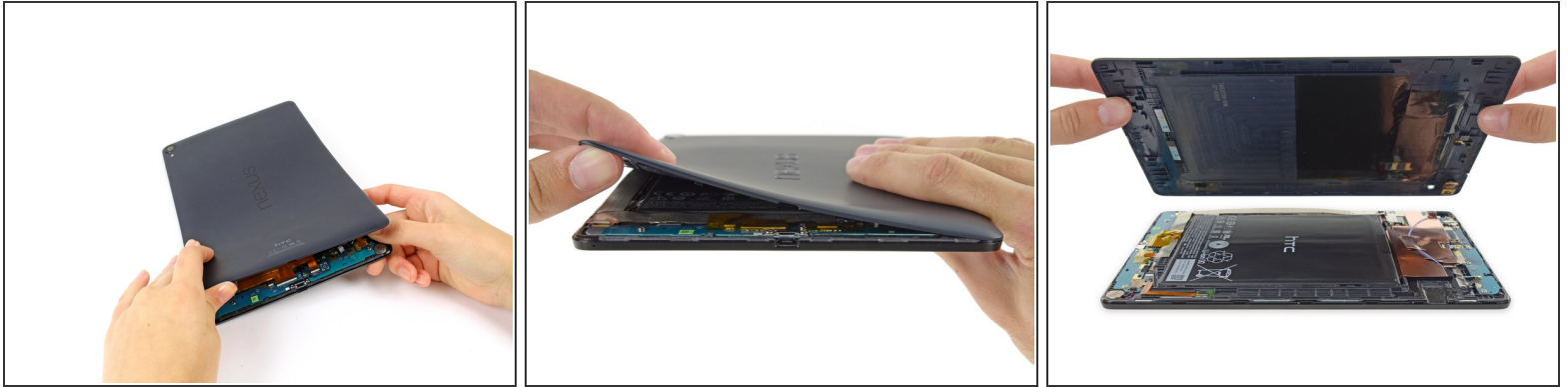
- [Spudger](#) (1)
- [T5 Torx Screwdriver](#) (1)
- [Phillips #000 Screwdriver](#) (1)



## PARTS:

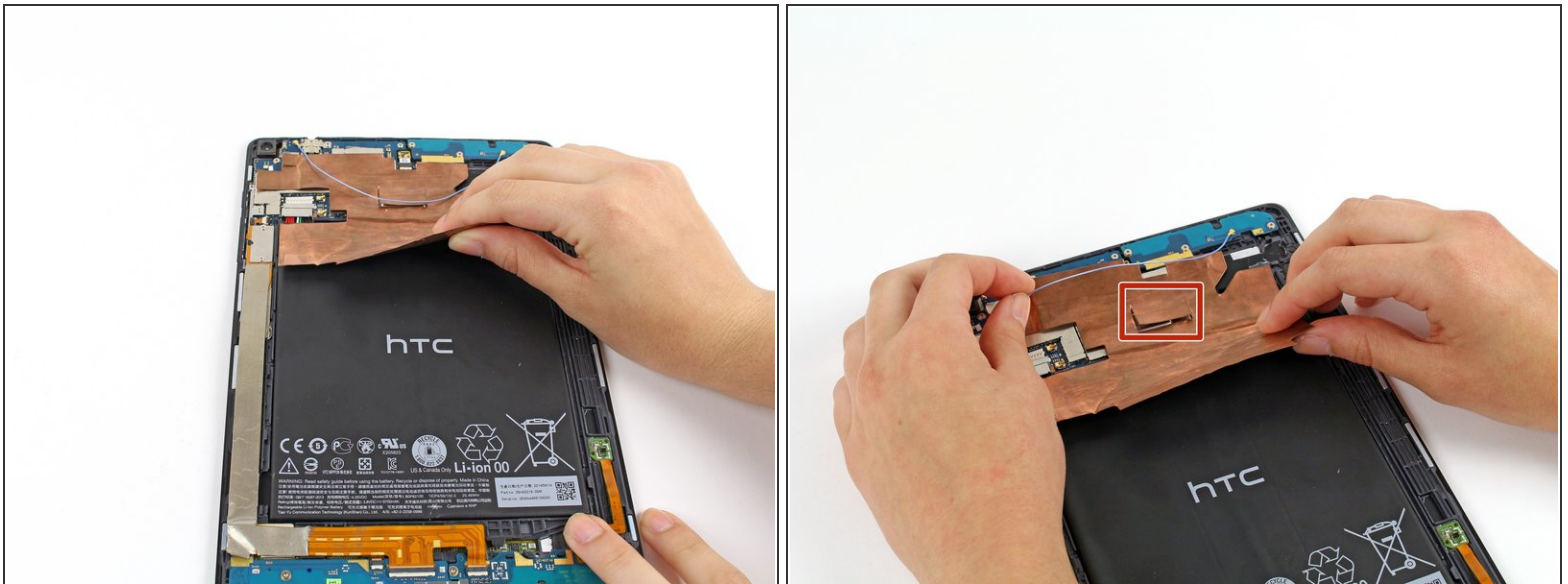
- [Nexus 9 Rear Camera](#) (1)

## Step 1 — Rear Case



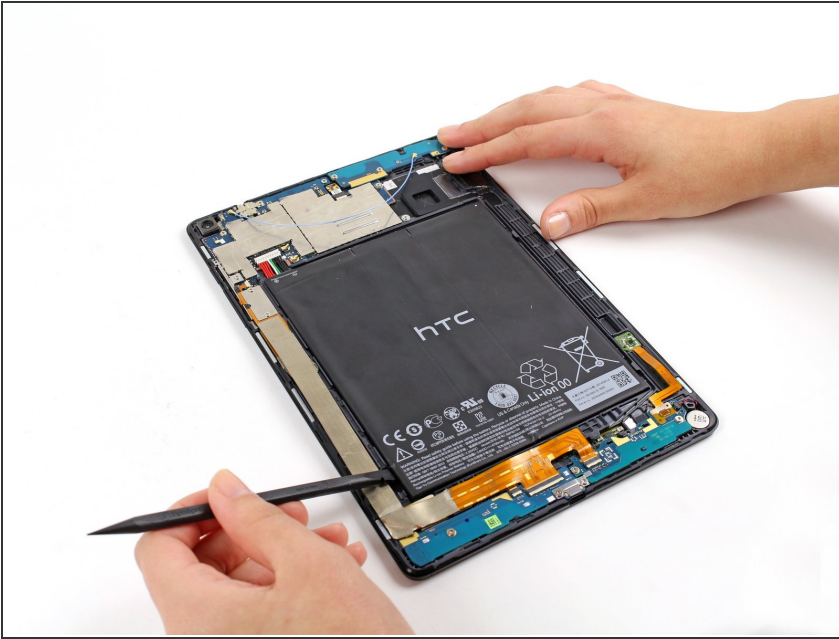
- With your fingers, carefully pry off the back plastic casing. Starting at the corners is usually the easiest.
- ⓘ The rear-facing camera seems to fit a little too snugly in its compartment on the rear case; so make sure that it stays connected to the motherboard.

## Step 2 — Battery



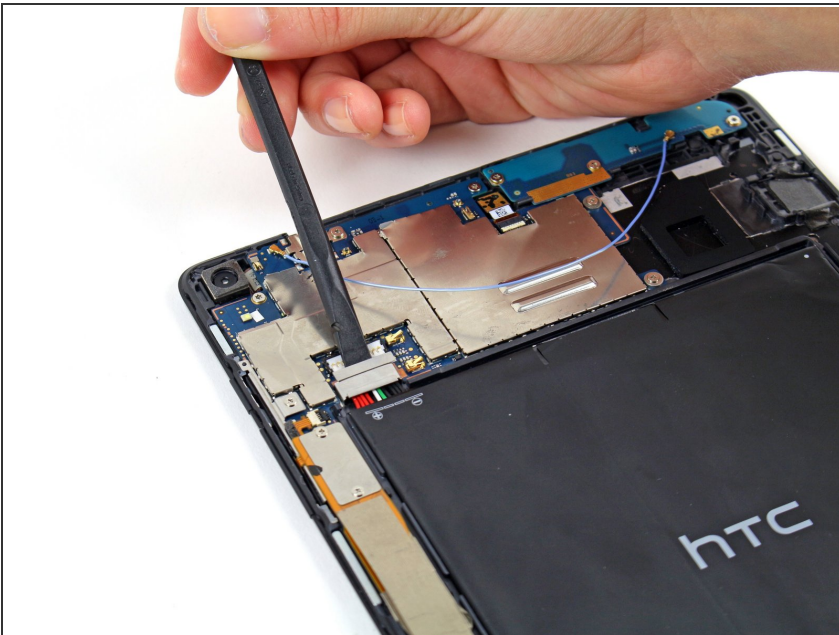
- Carefully peel up the copper shielding with your fingers.
- Before fully removing the copper shielding, make sure that the blue antenna cable is out of the way of the copper tab.

### Step 3



- Using the spudger tool, carefully remove the bottom of the battery from its location below the logic boards.
- The battery is attached to the motherboard with some adhesive, so you may need an iOpener to loosen up the adhesive. Check out the [iOpener guide](#) for info on how to do it.
- Do not pull the battery from the tablet yet, as it is still connected to the motherboard.

### Step 4



- Now remove the metal clip covering the battery's connector cable located above the top left of the battery with the spudger.
- After the metal clip is wiggled free, the battery's connector cable can be easily removed by just gently tugging it free.

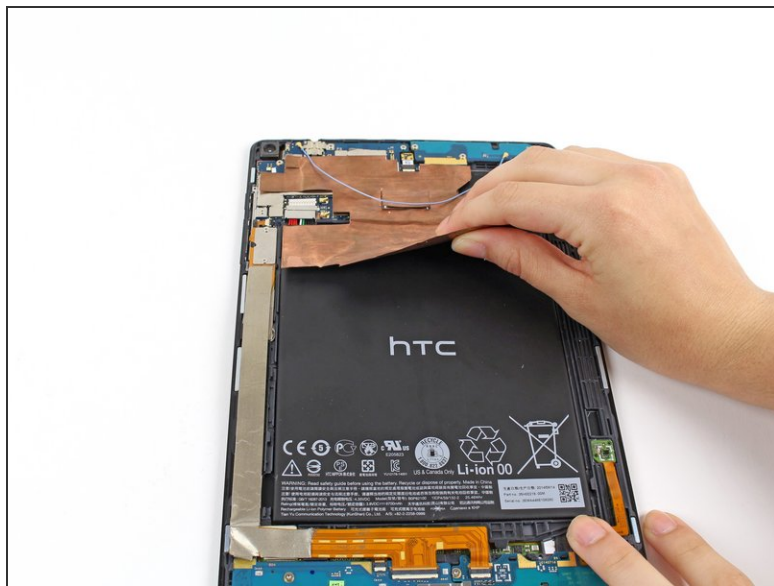


## Step 5



- The battery should now lift free of the tablet.

## Step 6 — Antenna Board

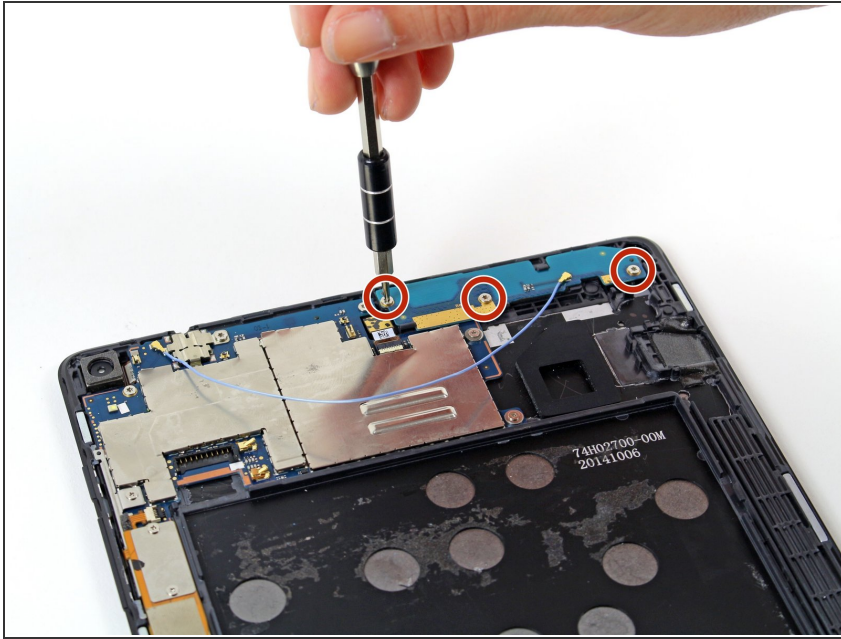


✦ This step is **not** necessary if you have already removed the battery.

- Carefully peel up the copper shielding with your fingers.
- Before fully removing the copper shielding, make sure that the blue antenna cable is out of the way of the copper tab.

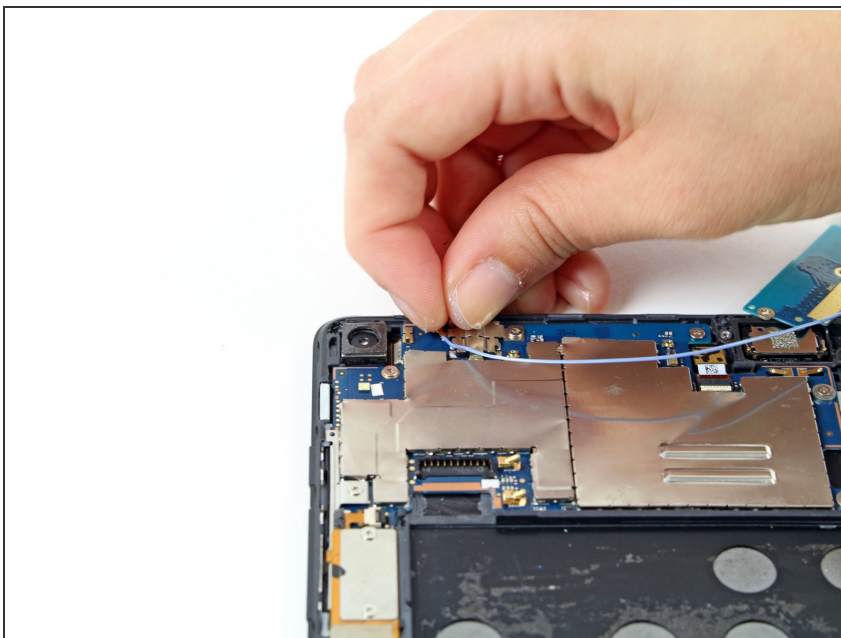
This document was generated on 2019-09-22 09:51:00 PM (MST).

## Step 7



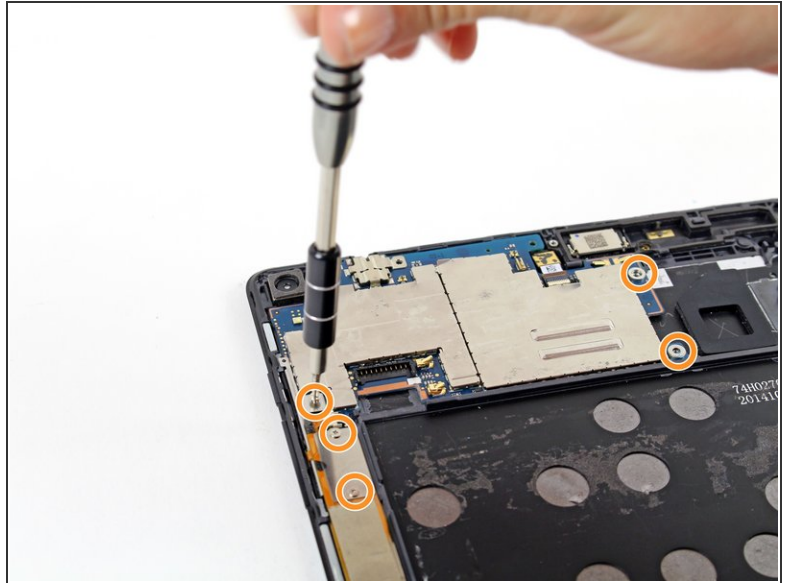
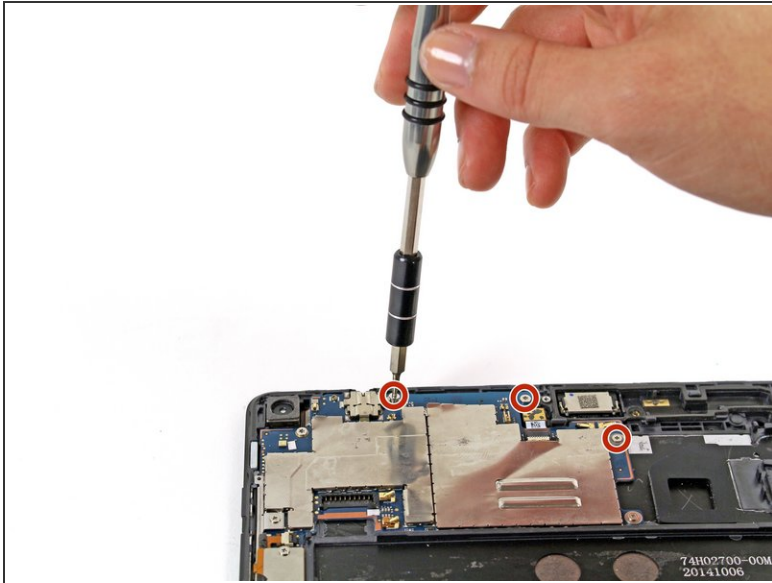
- Unscrew the three 3 mm Torx T5 screws on the antenna board.
- ⓘ This step and the next show the battery removed, but it is **not** necessary to remove it if you are only replacing the antenna board.

## Step 8



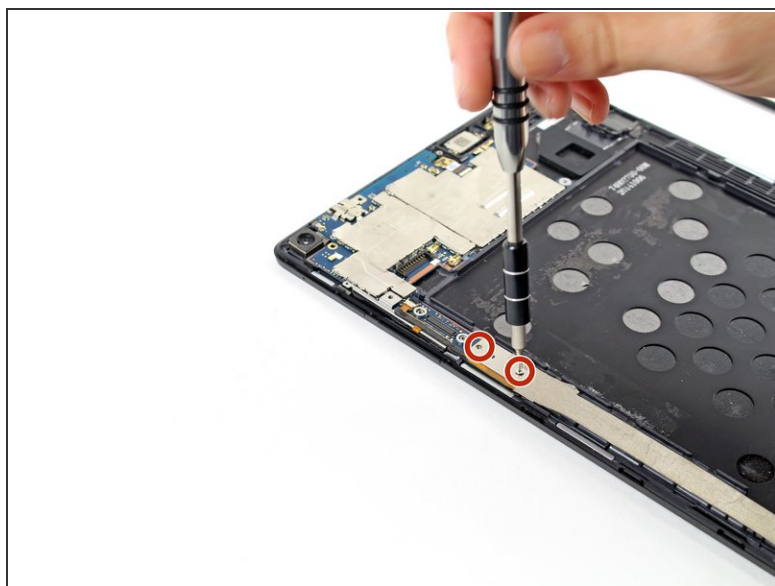
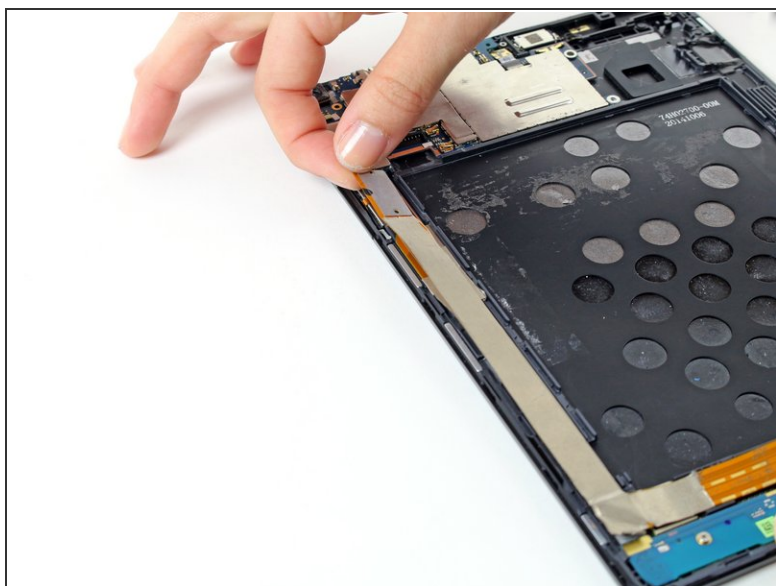
- Use your fingers or a pair of tweezers to disconnect the blue antenna cable from the motherboard.
- ⚠ When reinstalling the antenna, be sure to clean it with a degreaser such as windex or isopropyl alcohol. The oils on your fingers have the potential to create wireless interference.
- The antenna board should now lift free of the motherboard.

## Step 9 — Rear Facing Camera



- Remove the three 3mm T5 Torx screws.
- Remove the five 2 mm Phillips #000 screws.

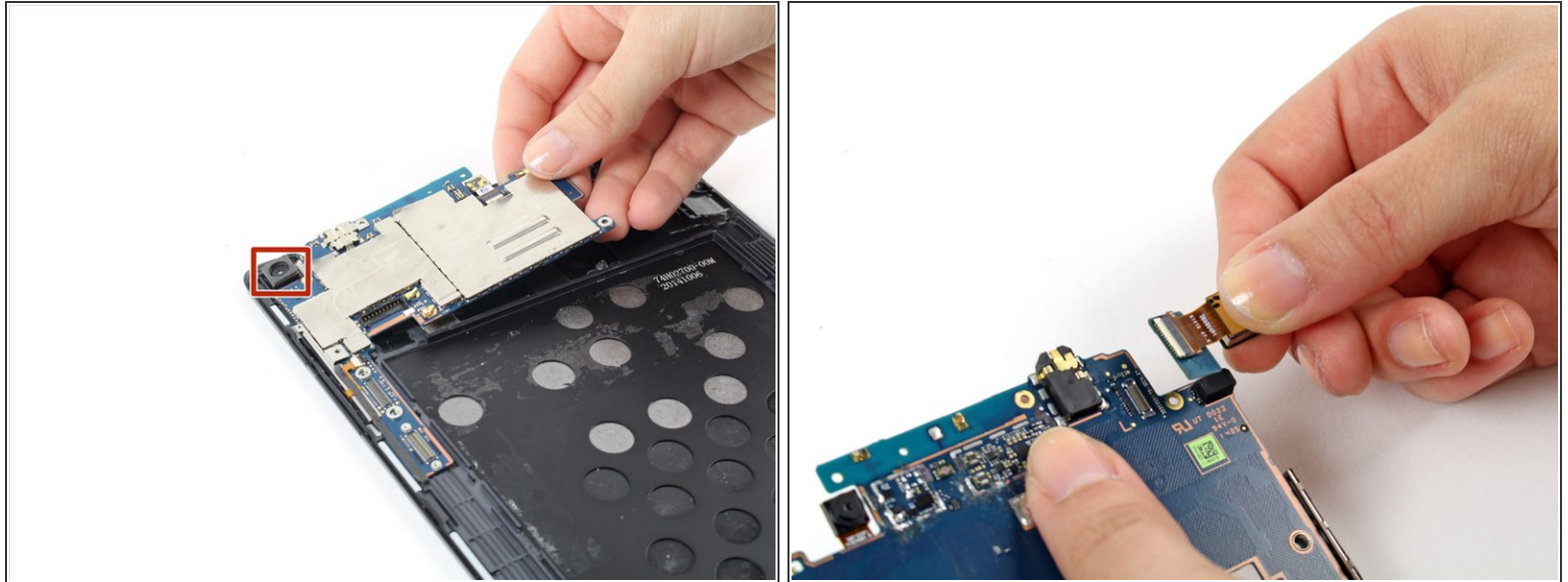
## Step 10



- Using your fingers, pull up on ribbon connector to expose another ribbon connector below.
- Remove the two 2 mm Phillips #000 screws on top of the second ribbon connector.
- Pull up the ribbon connector with your fingers.



## Step 11



- With both ribbons out of the way, you can now lift the motherboard off of the tablet with your hand.
- The camera is attached to the back side of the motherboard via a ribbon cable.
- Use a spudger or your fingernail to disconnect the camera from the motherboard.
- ⓘ There is a small board that comes off easily with the camera. It is attached to the camera with a ZIF connector, and will need to be swapped over to the replacement camera.

To reassemble your device, follow these instructions in reverse order.