



Nexus One Camera Replacement

This guide is for installing the camera on the Nexus One.

Written By: Niklas Johnson



 **TOOLS:**

- [iFixit Opening Tools](#) (1)
 - [Spudger](#) (1)
 - [Phillips #00 Screwdriver](#) (1)
 - [T5 Torx Screwdriver](#) (1)
-

Step 1 — Rear Cover



- Using two fingers, push up on the rear cover.

Step 2



- The rear cover slides up and off.

Step 3 — Battery



- Using the plastic opening tools, pry the left bottom corner of the battery up.

Step 4



- Pull the battery up and out.

Step 5 — Battery Housing



- Remove the two Torx T5 screws.
- Remove the one Philips #00 screw.

Step 6



- Using the plastic opening tool, pry up the battery housing upwards.
- Push pry tool down, undoing the plastic tab.

Step 7



- Pry the upper left tab open on the battery housing.

Step 8



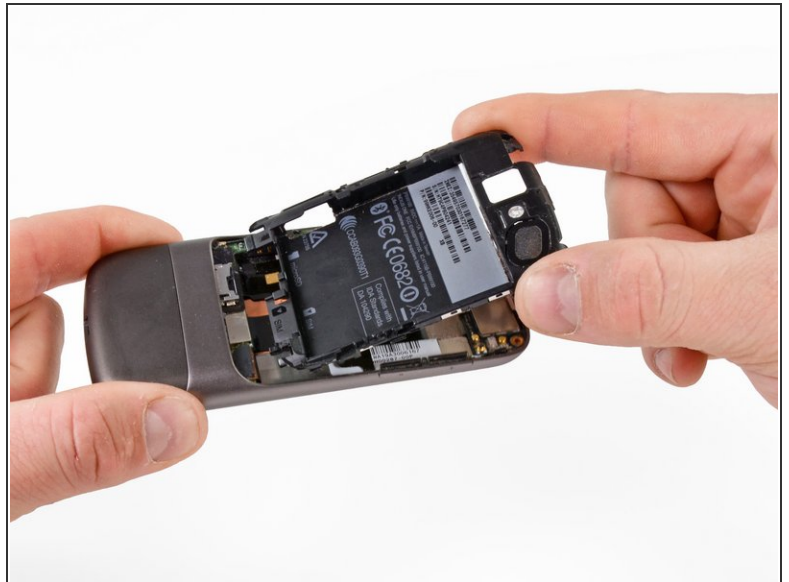
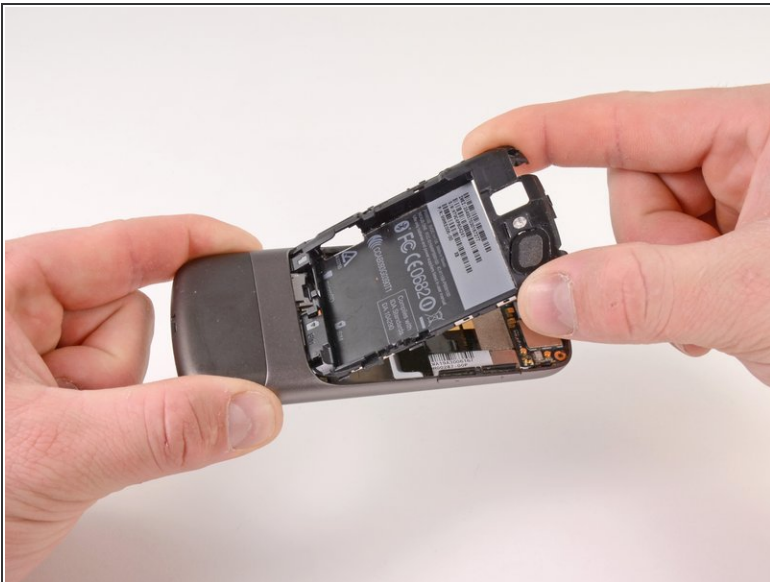
- Pry the top tab of the battery housing.

Step 9



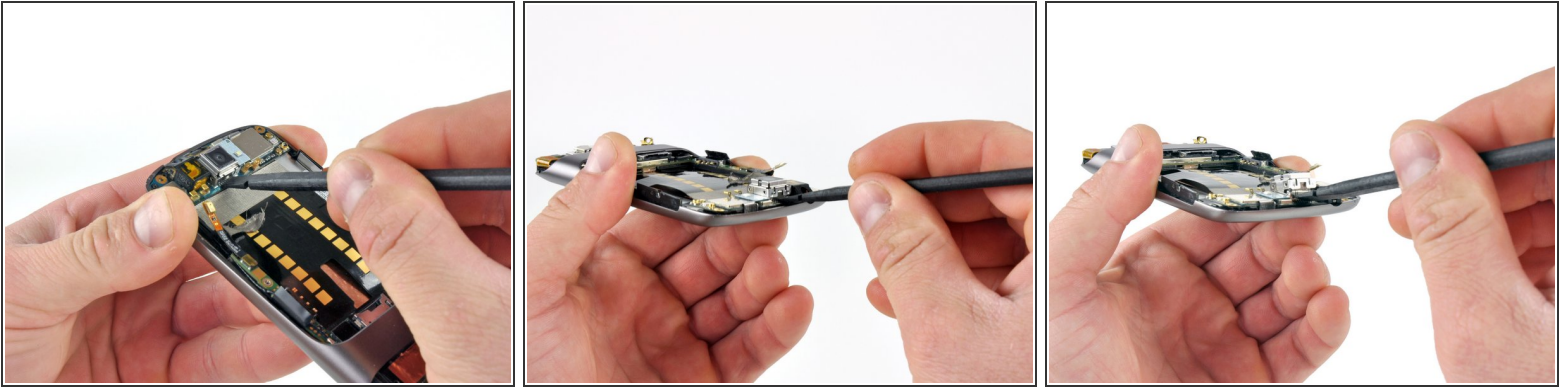
- Pry the right side tab of the battery housing.

Step 10



- Pull up on the battery housing.
- Slide the battery housing out to remove it.

Step 11 — Camera



- Place the spudger under the metal cover and pry upwards. (shoot bottom side first with tabbed clip)
- Swap the spudger to the other side of the cover base. Pry upwards. (fix?)
- Grasp the camera module and pull up.

To reassemble your device, follow these instructions in reverse order.