



# Nexus Q LED Board Replacement

Replacing the Nexus Q LED Board so your device stays lit.

Written By: Taewan Kim



---

## INTRODUCTION

The LED Board is responsible for that fancy light show the Nexus Q displays when functioning. Reaching the LED Board is most of the work when you want to replace it.

---

### TOOLS:

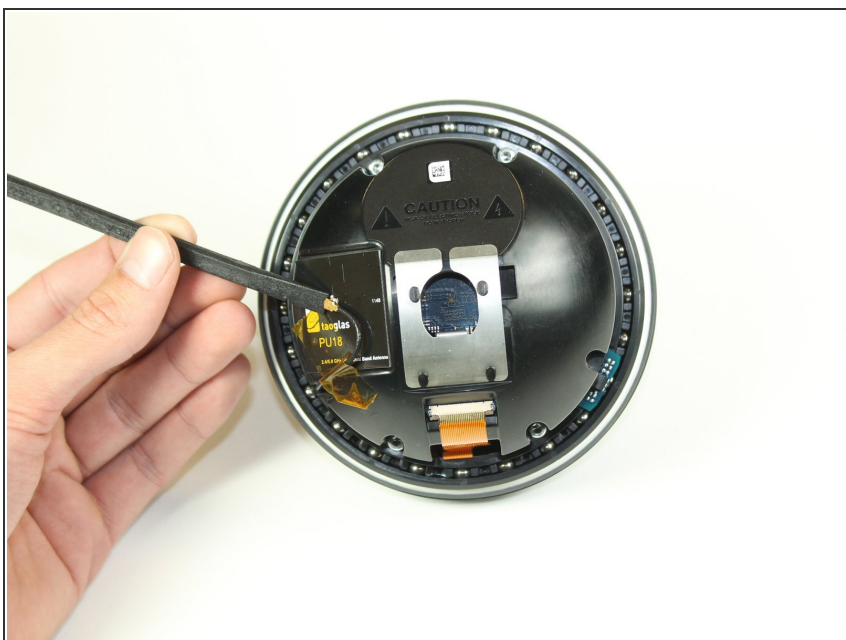
- [Spudger](#) (1)
  - [T10 Torx Screwdriver](#) (1)
  - [T6 Torx Screwdriver](#) (1)
-

## Step 1 — Ball Bearing Ring



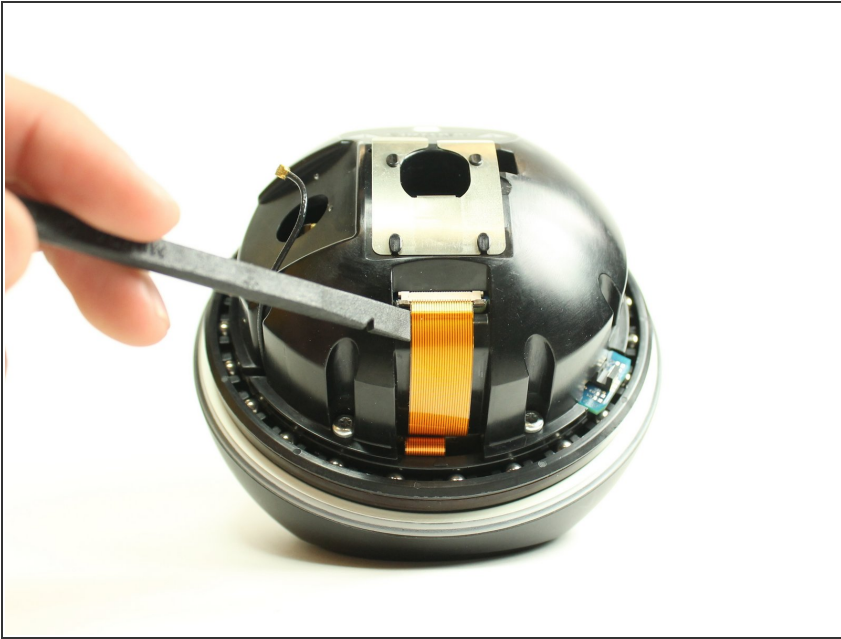
- Squeeze and pull the cap to remove it from the Nexus Q.

## Step 2



- Use a spudger to disconnect the Taoglas Wi-Fi Dual Band Antenna.

### Step 3



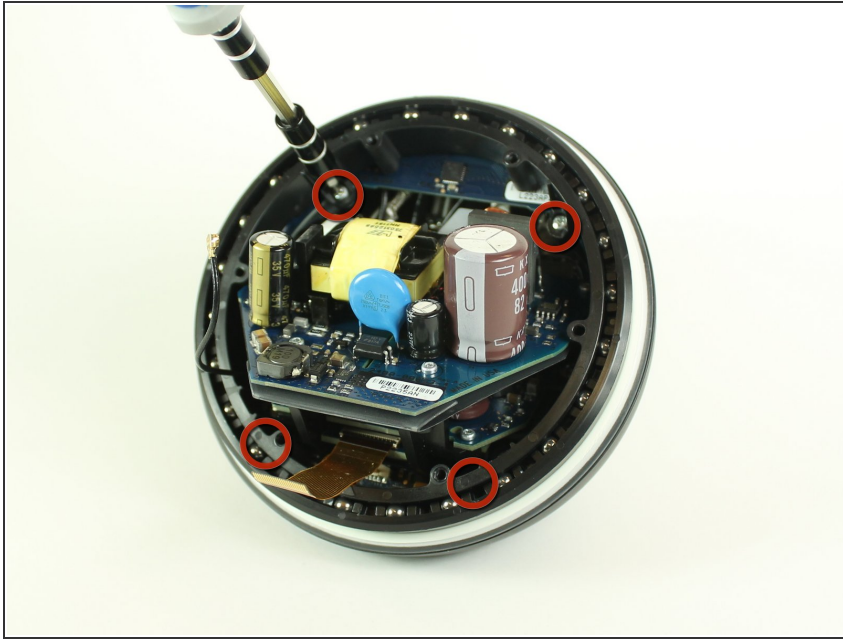
- Undo the ZIF connector by prying it with a spudger.

### Step 4



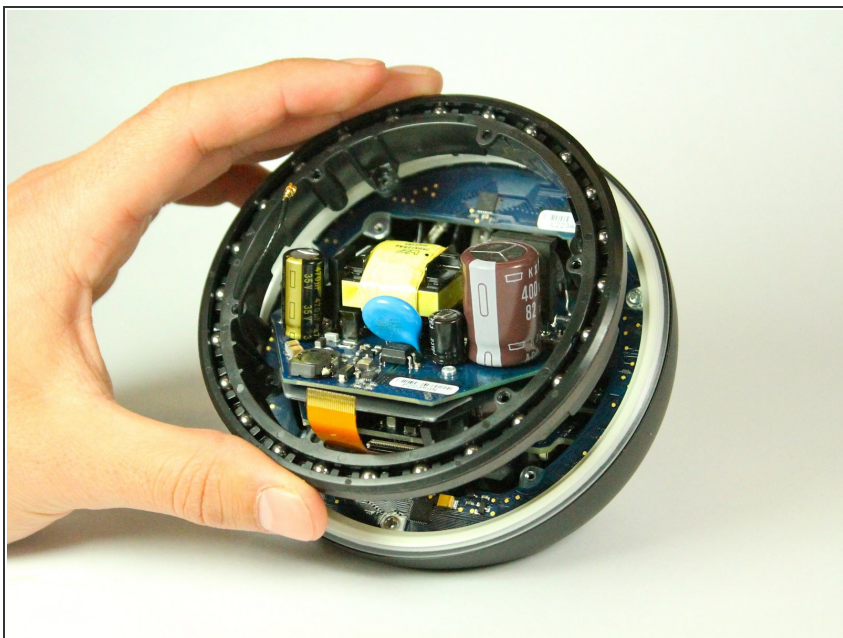
- Use a Phillips #0 screwdriver to unscrew the four 1.3 mm screws.
- ⓘ After removing the screws, there will be two parts. The top part contains the daughterboard. Store it safely. It will not be used.

## Step 5



- View the bottom half of the Nexus Q.
- Use a Phillips #0 screwdriver to remove the four 0.8 mm screws holding the ball bearing ring in place.

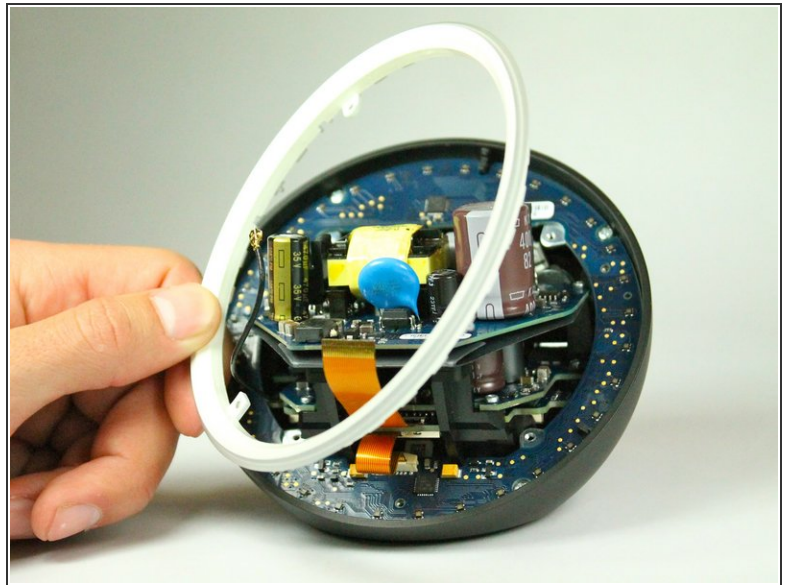
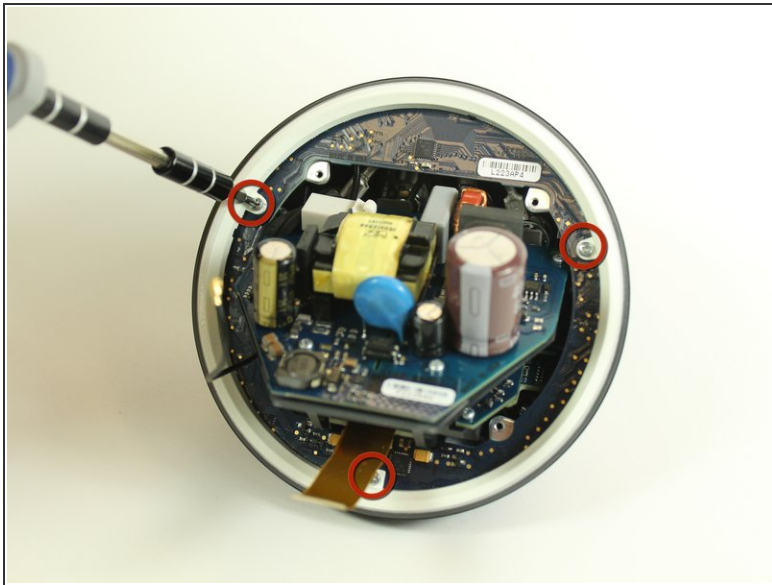
## Step 6



- Remove the ball bearing ring.
- ⓘ When placing a new ring in its place, make sure to orient it right or the top will not close.

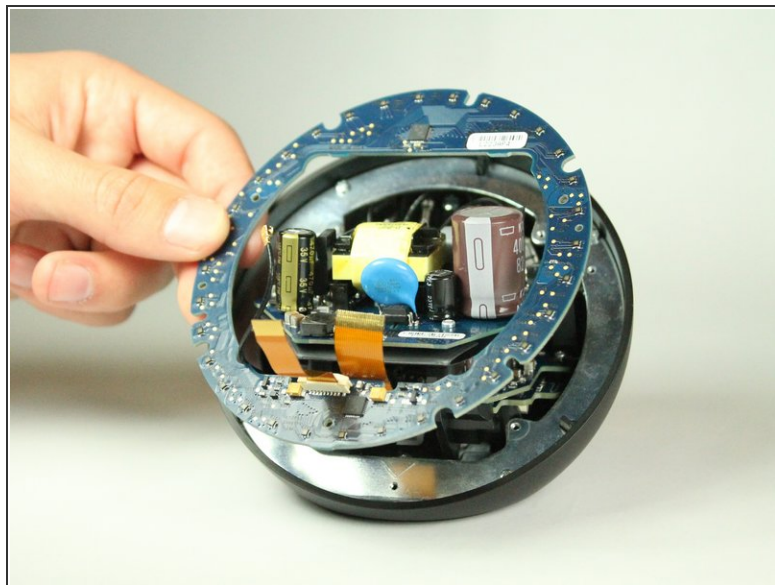
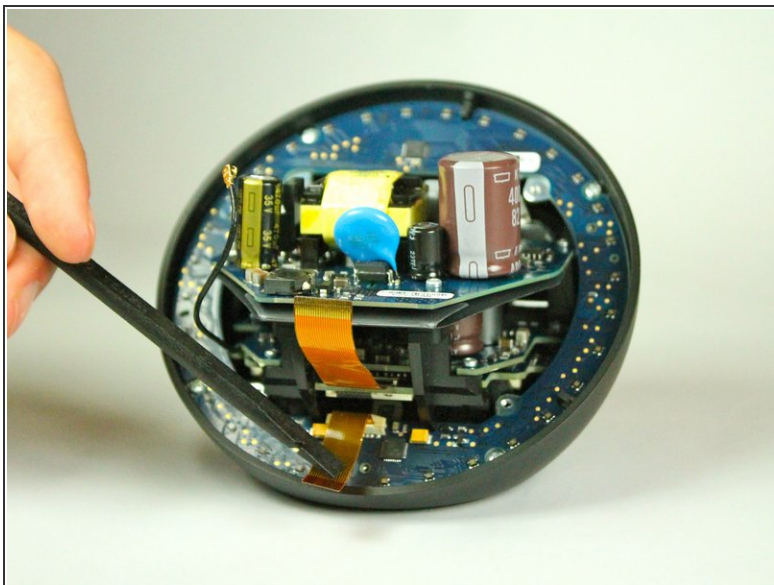


## Step 7 — LED Board



- Once you remove the ball bearing ring from the bottom half of the Nexus Q, you will be exposed to a diffuser (white ring) held in with three T6 Torx screws.
- Use a #0 Philips head screwdriver to remove the three 0.8 mm screws holding the diffuser in place.

## Step 8



- With the diffuser out, we are exposed to the LED Board.
- Use a spudger to lightly lift the LED board out.

To reassemble your device, follow these instructions in reverse order.