



Nike SportWatch GPS Battery Replacement

This guide will show you how to remove the existing battery located in the back panel of the watch.

Written By: Ian Eichorn



INTRODUCTION

If your battery is dying, you may have to replace it. Follow this guide to take the watch apart and replace the battery.



TOOLS:

- [Spudger](#) (1)
- [iFixit Opening Picks set of 6](#) (1)
- [Phillips #000 Screwdriver](#) (1)



PARTS:

- [Nike Sportwatch GPS Replacement Battery - OEM - EEMB LP322431 170mAh](#) (1)

Step 1 — Battery



- Face the watch upside down, so that the back of the watch is exposed. Unscrew the six size #000 5 mm long screws using a size 000 Phillips head screwdriver.

Step 2



- Carefully separate the watch by pulling the band away from the main board.

Step 3



- Pry the black plastic piece above the battery out using a nylon or metal spudger.

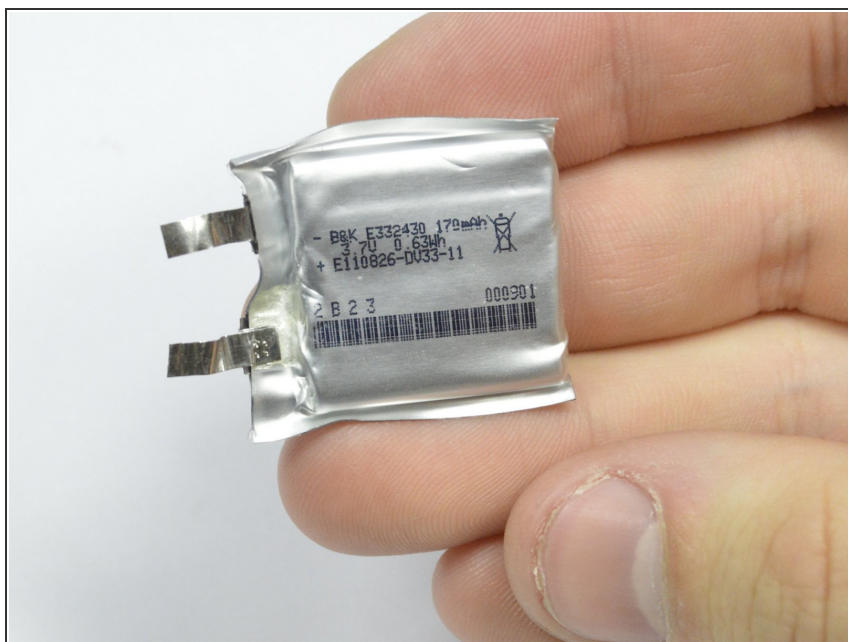
⚠ Be careful not to break the metal flat bands located above the plastic piece. They are fragile and easily breakable.

Step 4



- Using a guitar pick removal tool, push under the battery to pry the battery out of the watch.

Step 5



- The battery should then easily come out of the watch.

To reassemble your device, follow these instructions in reverse order. Once reassembled, plug the watch back into a USB computer port to turn the watch back on and start the initial charge. Let charge to full capacity.