



# Nike SportWatch GPS Unit Replacement

You will replace the GPS unit in the watch

Written By: Ian Eichorn



---

## INTRODUCTION

In the event that the GPS unit stops picking up a signal, it may require a replacement. This guide involves opening the watch and removing the main board on the watch. A wire connects the GPS to the main board, so after the replacement is finished, soldering the wire back to the main board may be necessary.



### TOOLS:

- [iFixit Opening Tools](#) (1)
  - [Spudger](#) (1)
  - [Soldering Iron](#) (1)
  - [Phillips #000 Screwdriver](#) (1)
-

## Step 1 — GPS Unit



- First, unscrew the six size #000 5 mm long screws on the back using a size 000 Phillips head screwdriver.

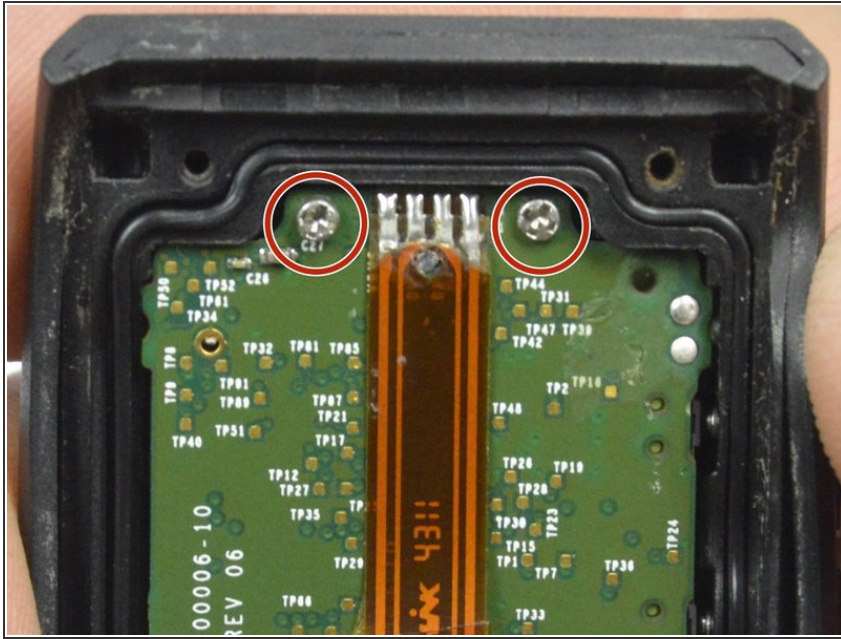
## Step 2



- Then, gently pull the watch band and front screen apart.



### Step 3



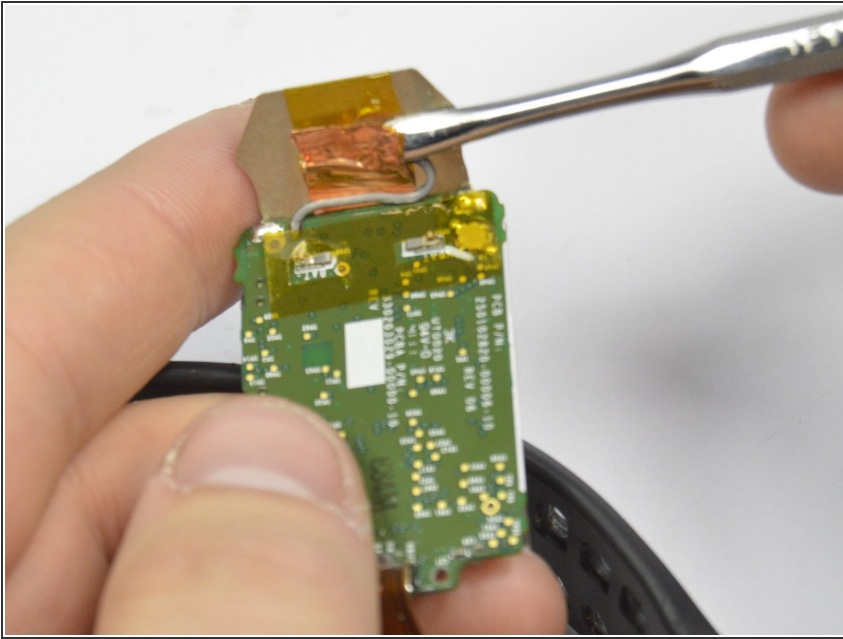
- Two size #000 2.5 mm screws on the main board will appear. Unscrew them using a size 000 Phillips head screwdriver.

### Step 4



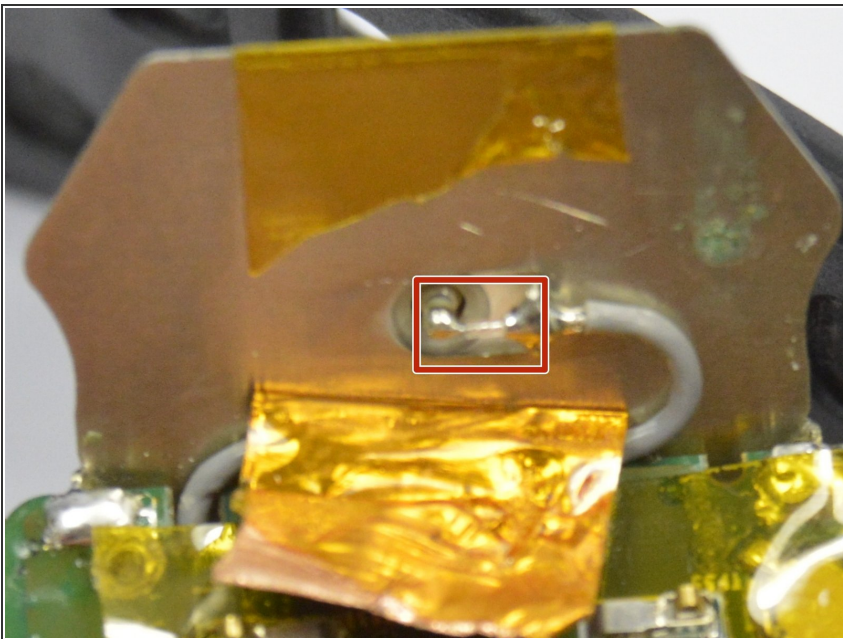
- Carefully use the blue plastic removal tool to pry the main board out of the front panel.
- ⚠ Make sure to be gentle so the ribbon cable that connects to the band does not break, it is fragile and is not removable.

## Step 5



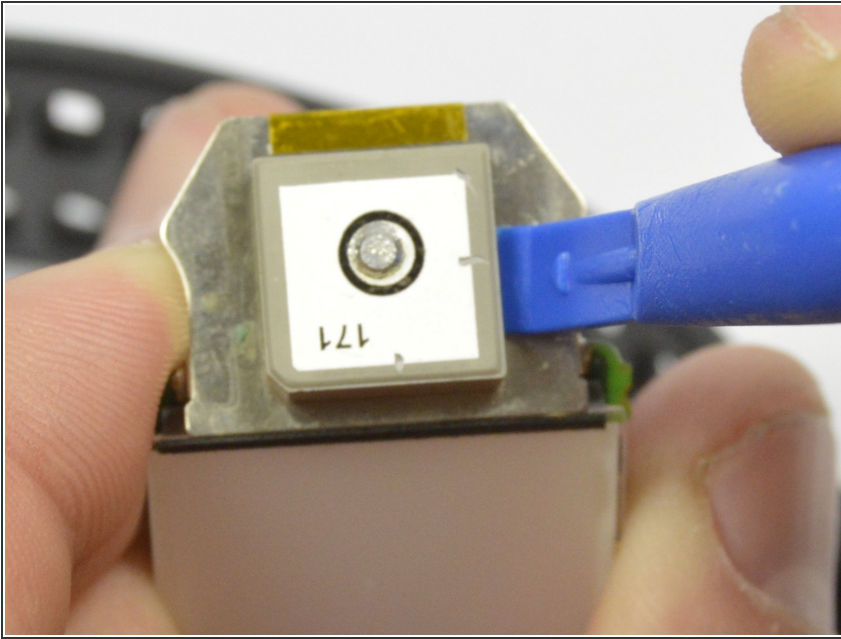
- Using a nylon or metal spudger, cut the orange tape that covers the wire for the GPS.

## Step 6



- Break the metal part of the wire that connects the GPS to the main board using the metal tool.
- ① When you are re-assembling the watch, you will have to solder the wire back together.

## Step 7



- Use the plastic opening tool to pry out the GPS unit.

To reassemble your device, follow these instructions in reverse order.