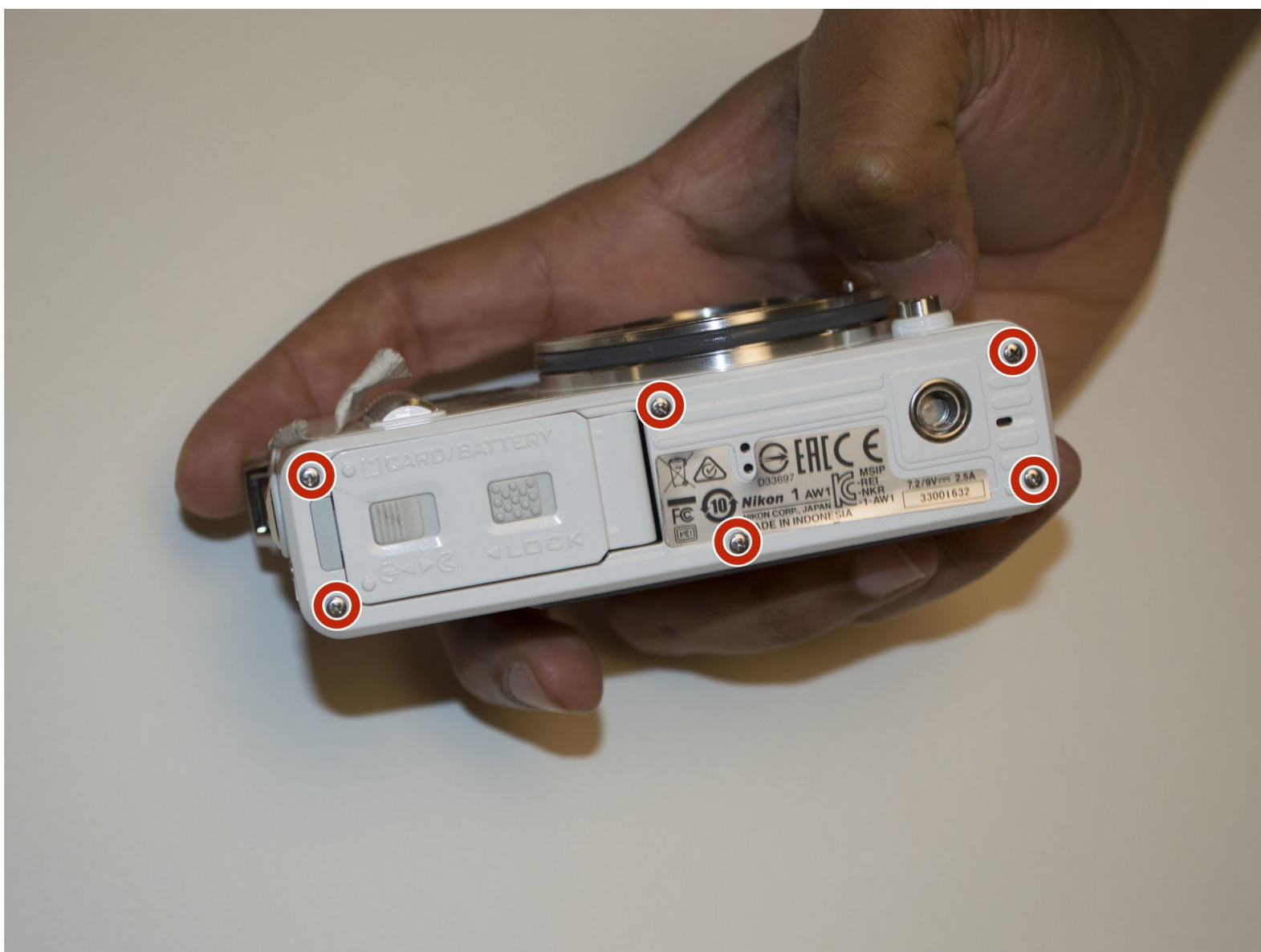




Nikon 1 AW 1 Buttons Replacement

This guide will cover how to replace the broken ON/OFF, Movie Record, and Shutter-release buttons on the Nikon 1 AW 1.

Written By: Lester Rodriguez Piti



INTRODUCTION

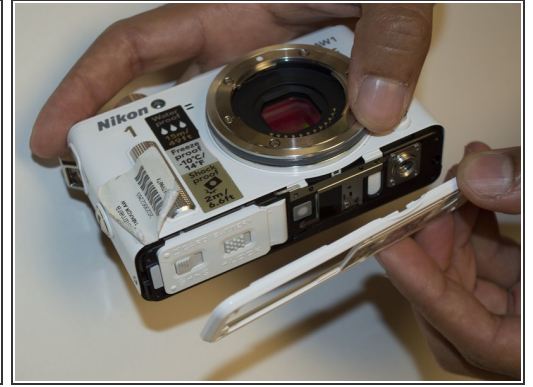
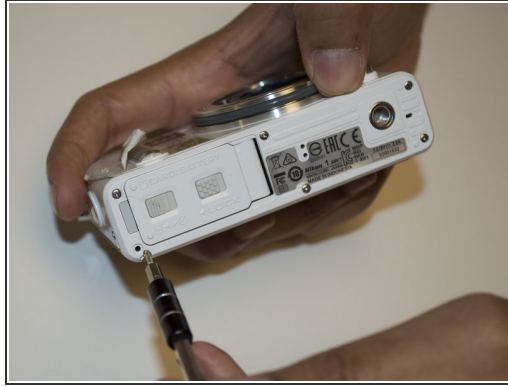
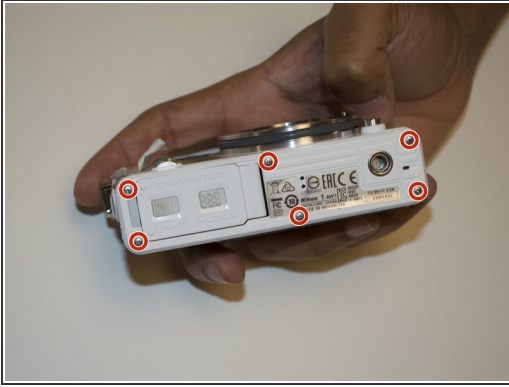
Sometimes the only thing wrong with your camera is a broken button that won't let you turn it on. This guide will show you how to replace those problematic buttons.



TOOLS:

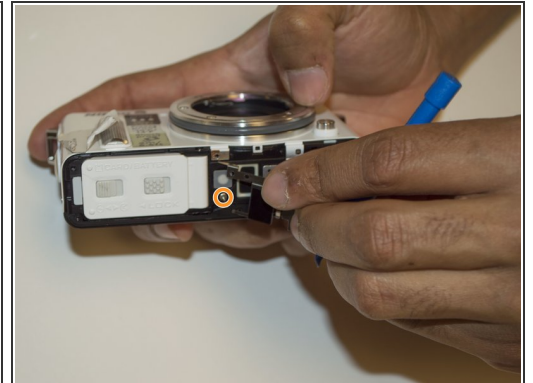
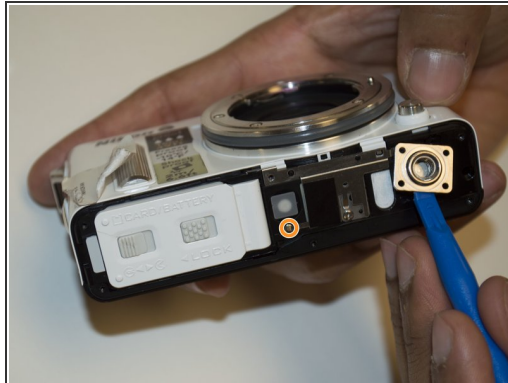
- [Phillips #00 Screwdriver](#) (1)
 - [T4 Torx Screwdriver](#) (1)
 - [iFixit Opening Tools](#) (1)
 - [Flathead 3/32" or 2.5 mm Screwdriver](#) (1)
-

Step 1 — Buttons



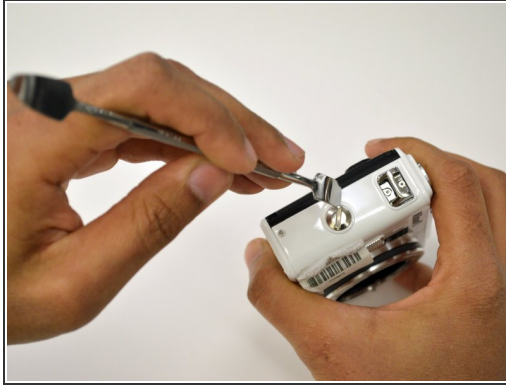
- Using the Phillips PH00 screwdriver, remove the six 4.0mm screws marked in red. Then remove the panel cover by lightly pulling it off.

Step 2



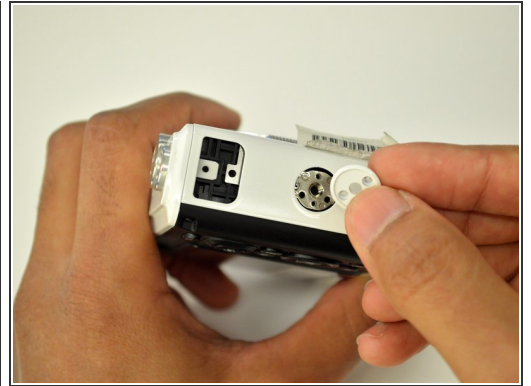
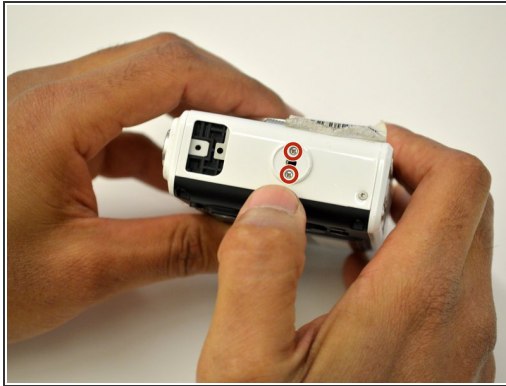
- Using the Phillips PH00 screwdriver, remove the four 5.5mm screws in the red circles. Then use a plastic opening tool to pry off the tripod socket.
- Remove the metal plate to have access to the 4.9mm screw under the orange circle, use the Phillips PH00 screwdriver to remove it.

Step 3



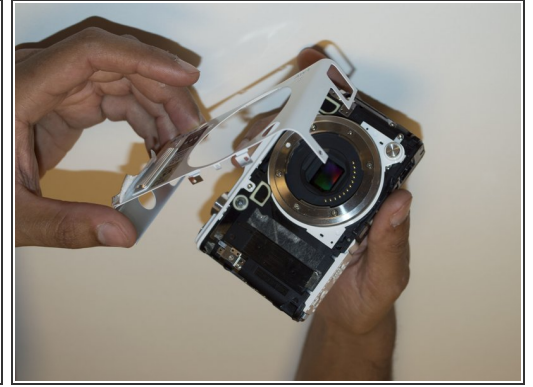
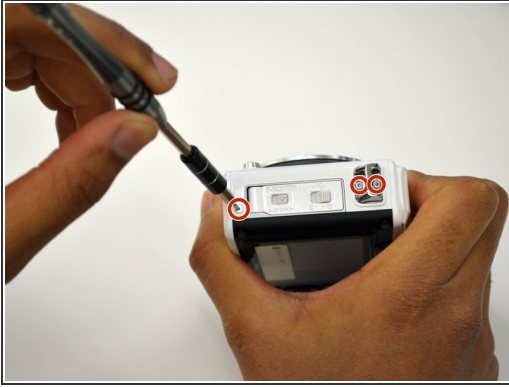
- Using a T4 head screwdriver remove the three 5.4mm screws marked with the red circles.
- Use a 1/4" flathead screwdriver or a flat head tool to release the grip attachment screw.
- Remove the camera strap eyelet.

Step 4



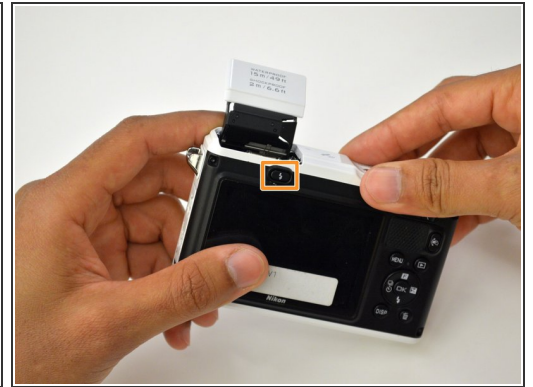
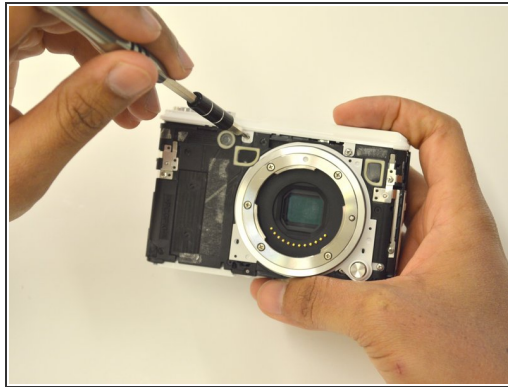
- Remove the grip attachment screw.
- Use a Phillips PH00 to remove the two 2.4mm screws on the grip attachment slot, then remove the slot.

Step 5



- Use a T4 screwdriver to remove the three 5.4mm screw marked with the red circles and the eyelet strap.
- Use a plastic opening tool to lift the front camera cover off.

Step 6



- Use a Phillips PH00 to unscrew the two 3.5mm screws in red.
- Press the flash pop-up button in the orange rectangle to be able to remove top cover of the camera.

Step 7



- Use a plastic opening tool to lift off the top panel.

Step 8



- If you needed to replace any buttons, you may now do so by pulling them off.

To reassemble your device, follow these instructions in reverse order.