



# Nikon 1 J5 Teardown (partial, repair purpose)

Written By: Terrance





## TOOLS:

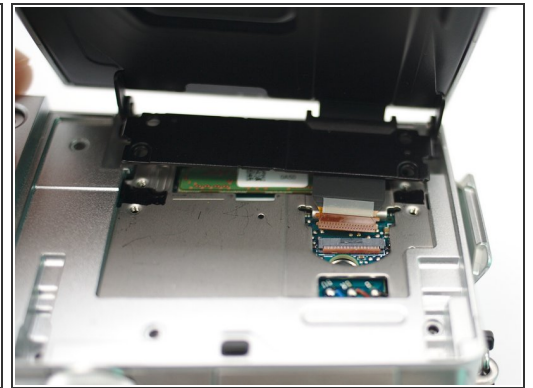
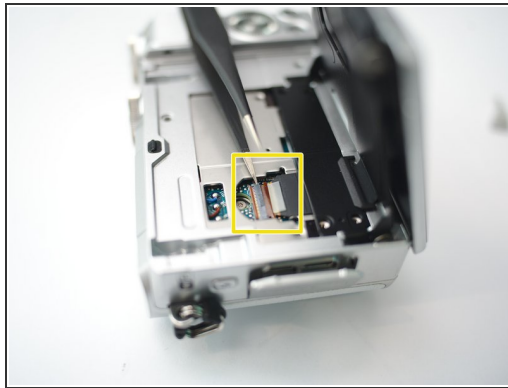
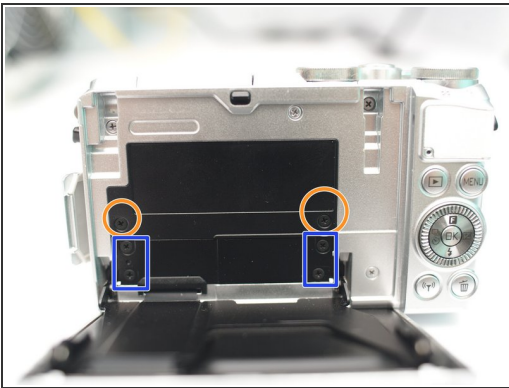
- [Pro Tech Toolkit](#) (1)
-

## Step 1 — Nikon 1 J5 Teardown (partial, repair purpose)



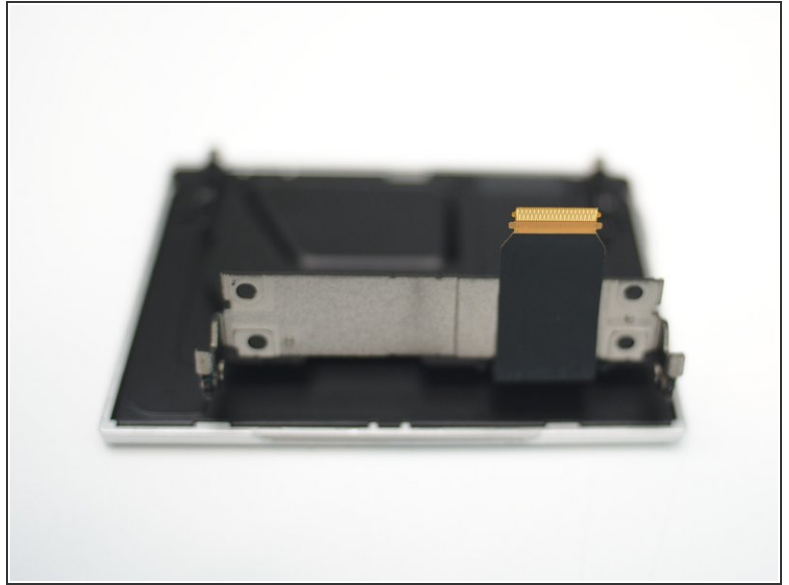
- Remove Lens, MicroSD Card and Battery

## Step 2 — Remove/Replace LCD/Touchscreen



- Remove 2 screws first
- Lift the cover
- Disconnect LCD FPC
- Then remove 4 screws
- Remove LCD assembly

### Step 3 — The LCD assembly and FPC connector



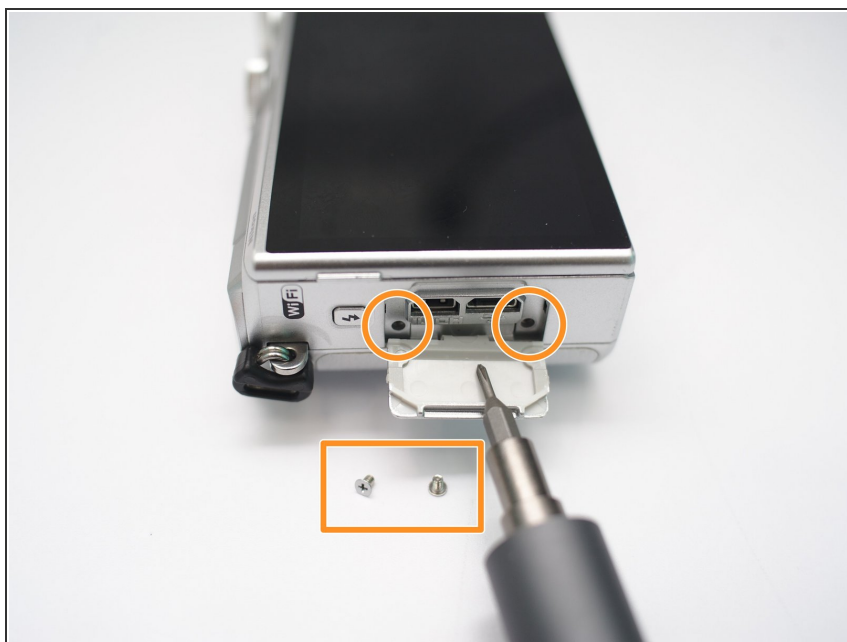
- Insert wisdom here.

### Step 4 — Bottom side



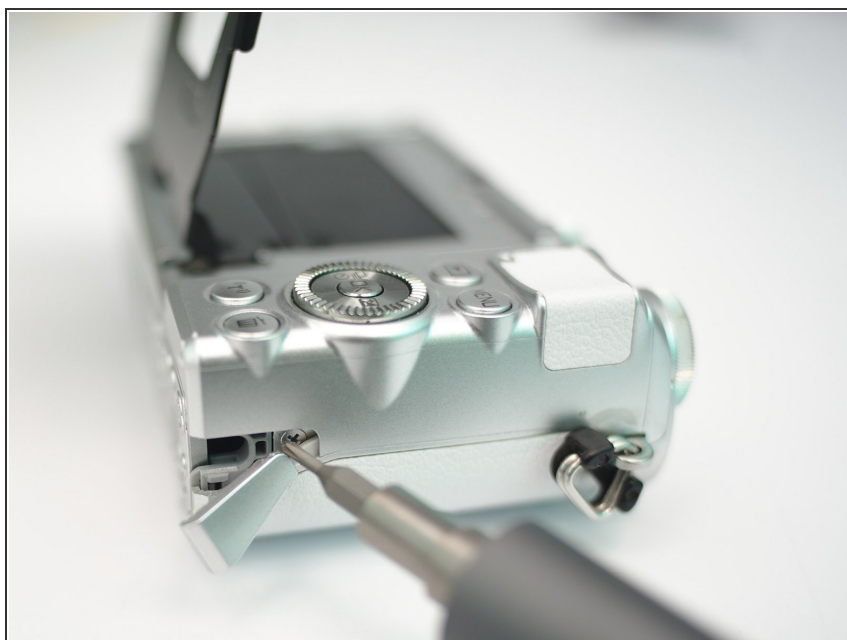
- Remove 2 screws

## Step 5 — Left Side(The LEFT when you holding it the right way)



- Open connection bay
- Remove 2 screws

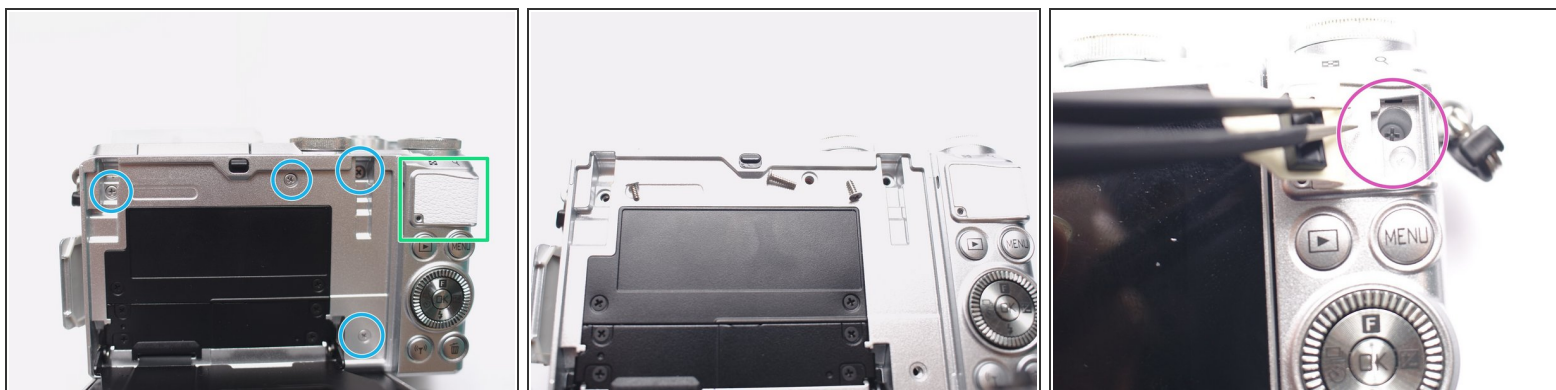
## Step 6 — Right side(the RIGHT when you holding it the right way)



- Remove 1 screw under the DC power cable notch cover

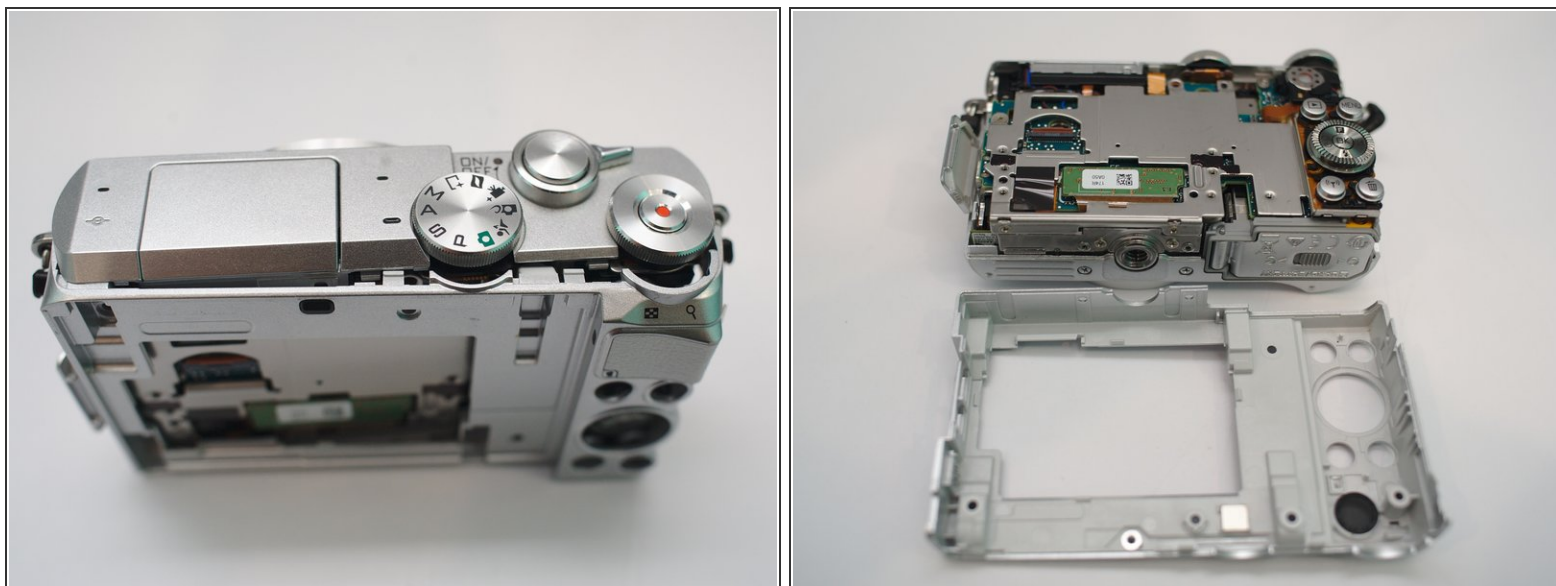


## Step 7 — Back side(again)



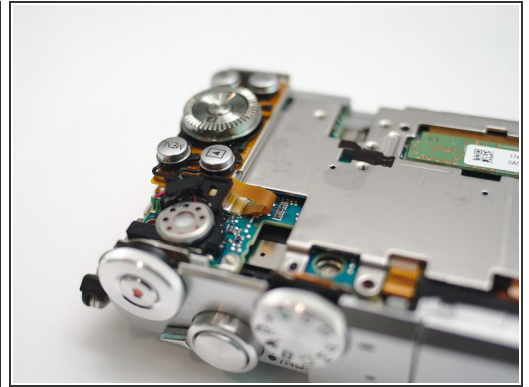
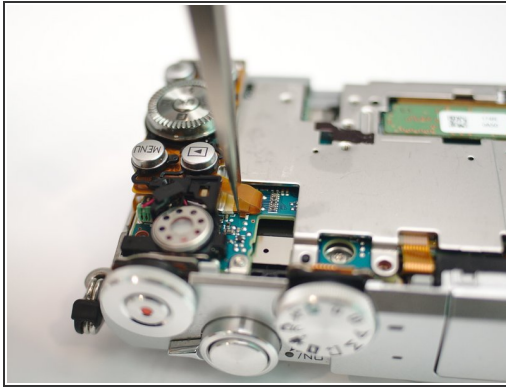
- Remove 4 screws and be ware the length difference
- Peel the rubber open from right hand side
- Remove 1 screw

## Step 8 — Back case



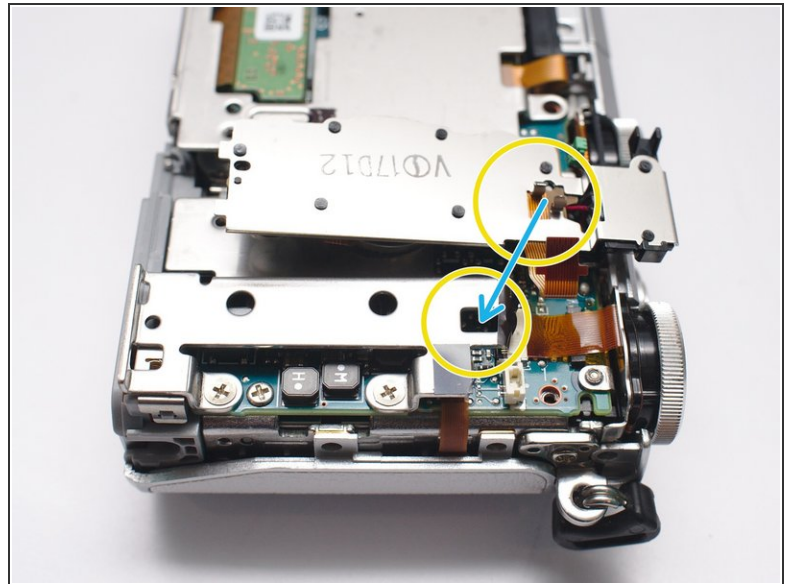
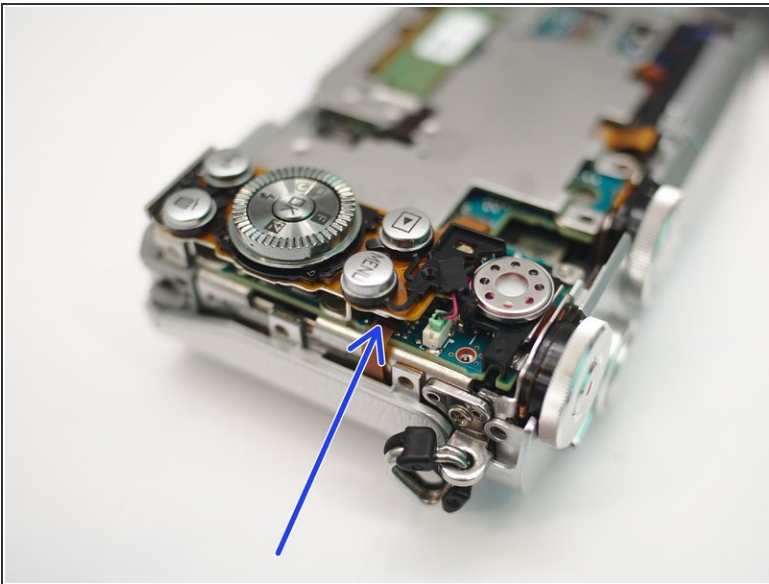
- Now the back case can be removed.
- There's no fragile FPC or cables in this step. Just be patient.

## Step 9 — Keypad



- Disconnect speaker cable
- Pull out keypad cable

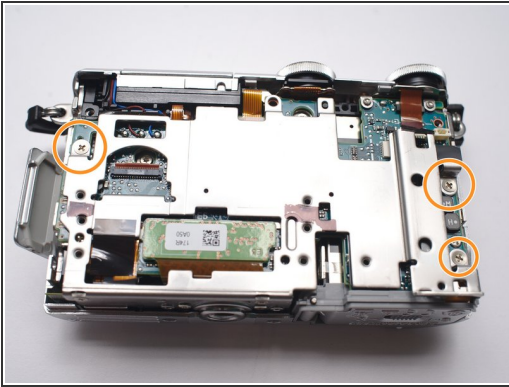
## Step 10



- Insert small crowbar or flat head screw driver here to lift the keypad up.

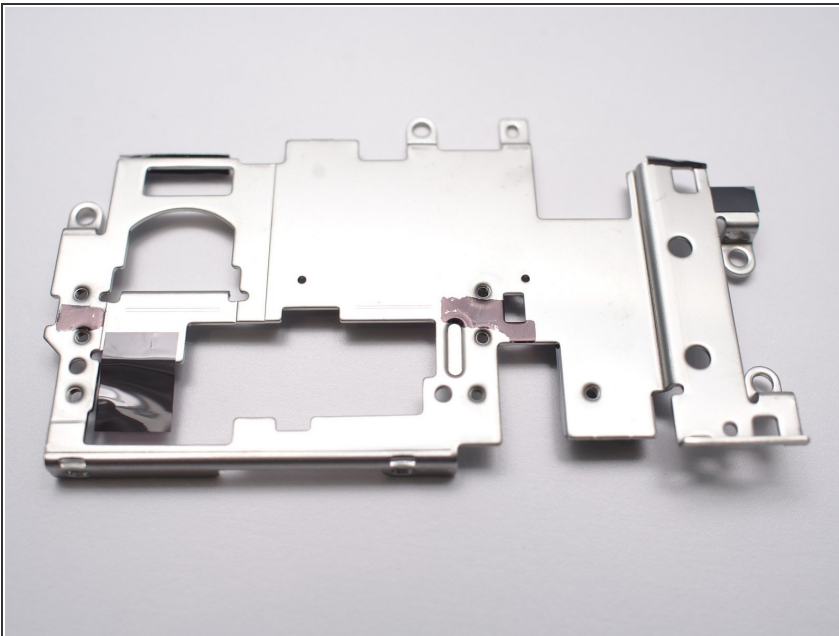
⚠ Those clips are very tight.

## Step 11 — Shielding cover



- Remove 3 screws
- Remove 2 screws
- ⓘ Notice the sizes of screws

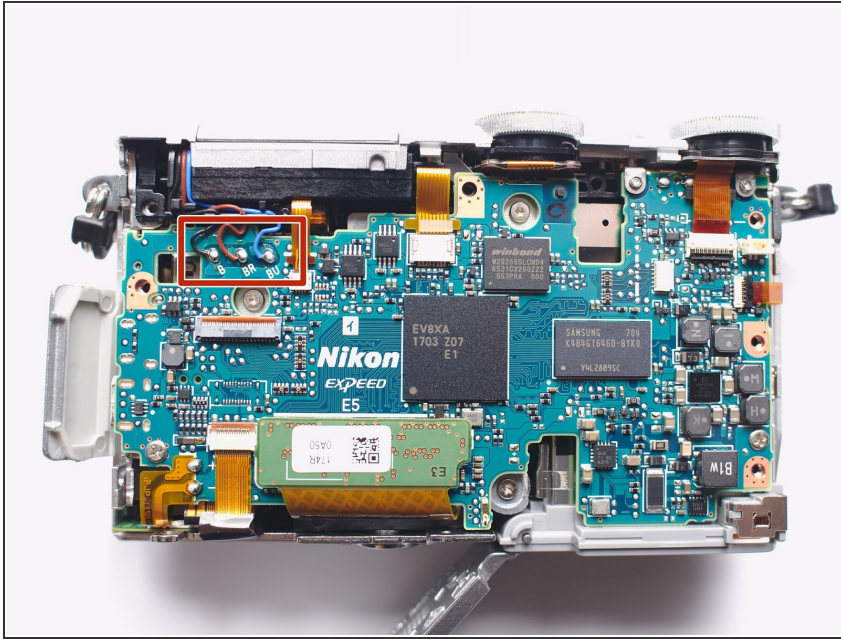
## Step 12 — Shielding cover







- Need some tape peeling





## Step 13 — Discharge flash reservoir capacitor



-  Dangerous DC Voltage > 200V
-  Use 10kohm, >2W resistor, connect Brown and Blue point for more than 10sec.
-  DMM's Low-Z voltage works even better.
-  Measure voltage between 3 points to ensure voltage <10V

## Step 14 — TO DO



-  More steps coming soon.
-  Some soldering/de-soldering work needed to remove/replace the main PCB