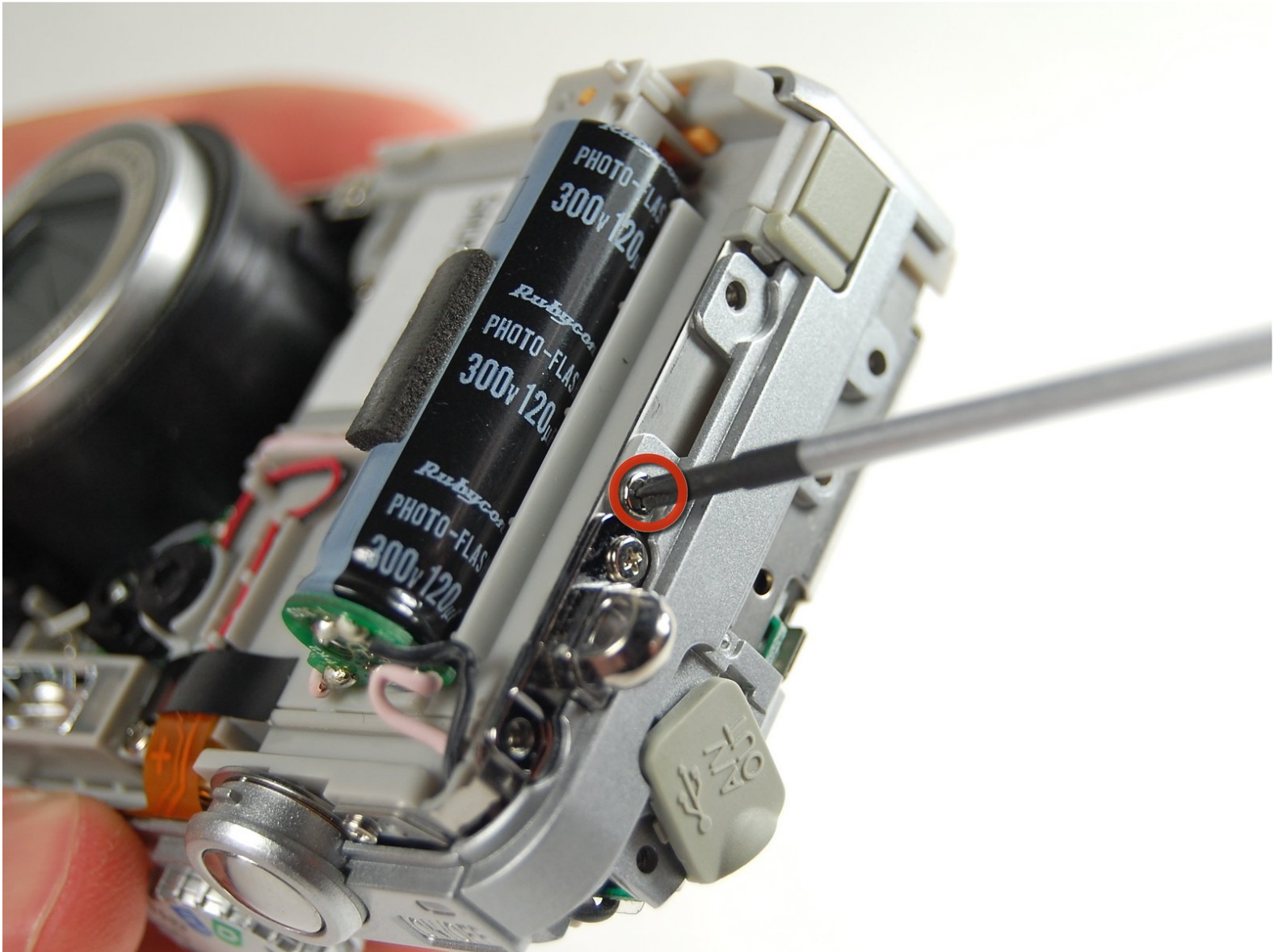




Nikon COOLPIX P2 Motherboard Replacement

Step-by-step guide to replacing the motherboard in your Nikon camera.

Written By: Joshua Avery

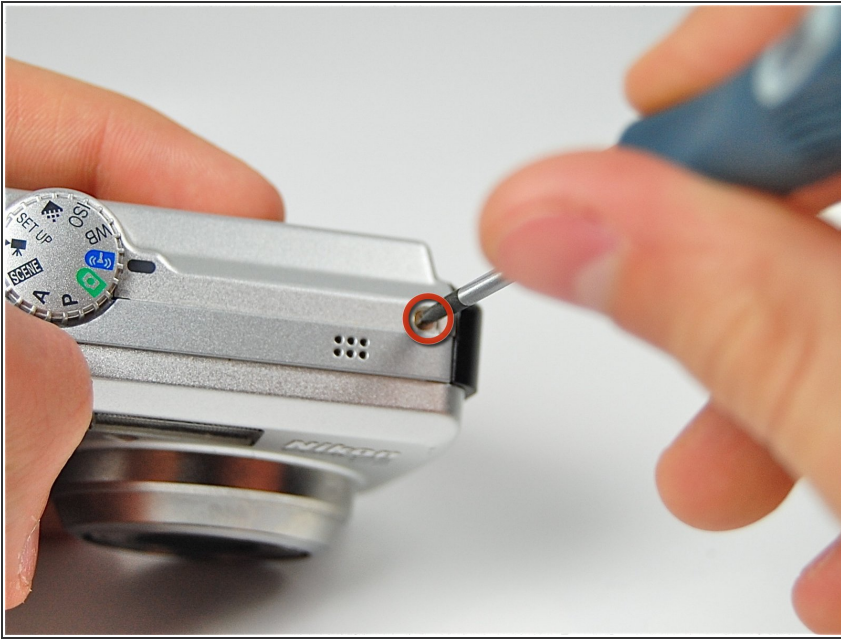




TOOLS:

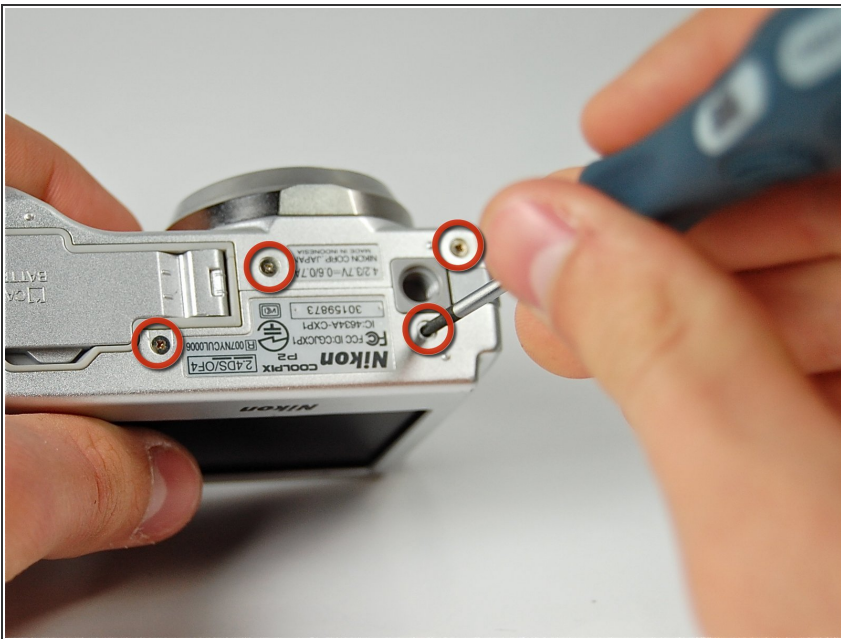
- [Phillips #00 Screwdriver](#) (1)
- [Soldering Iron](#) (1)
- [iFixit Opening Tools](#) (1)

Step 1 — Case



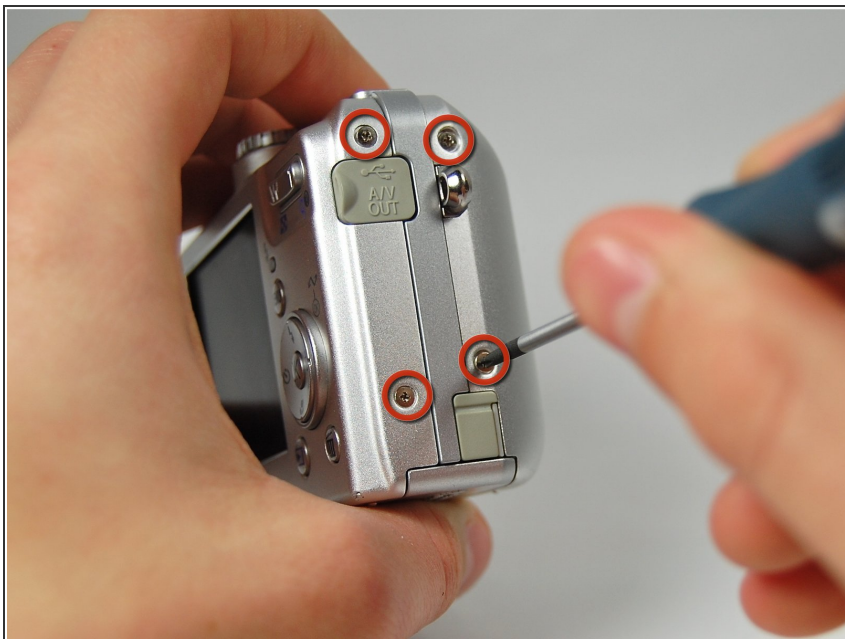
- Remove the screw located near the speaker port using a Phillips 00 screwdriver.

Step 2



- Turn camera upside down so that the battery compartment is facing you.
- Remove all four screws from the bottom of the camera with a Phillips 00 screwdriver.

Step 3



- Rotate the camera to the opposite side where the A/V outlet is located.
- Unscrew and remove all four screws with a Phillips 00 screwdriver.

Step 4



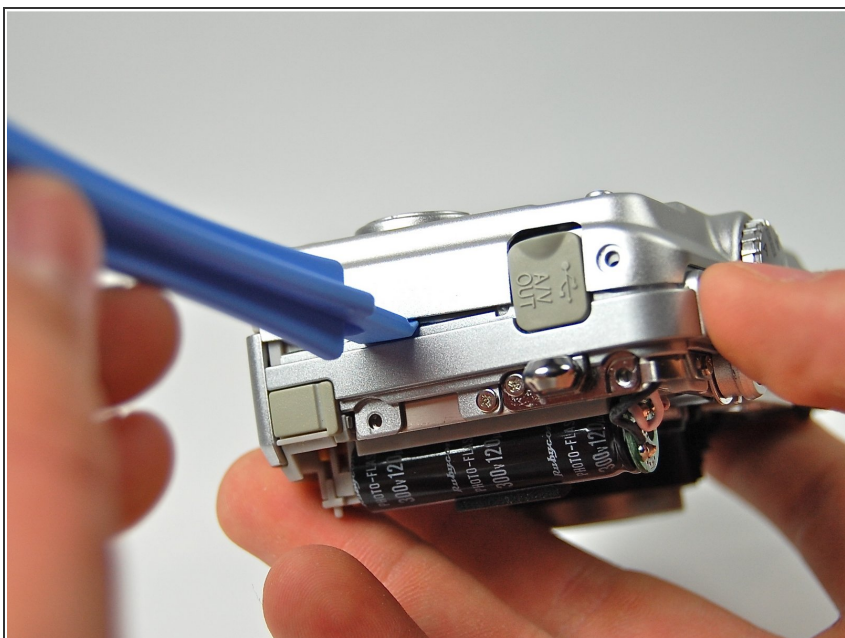
- Turn the camera so that the Wi-Fi adapter is facing you.
- Unscrew and remove all four screws with a Phillips 00 screwdriver.

Step 5



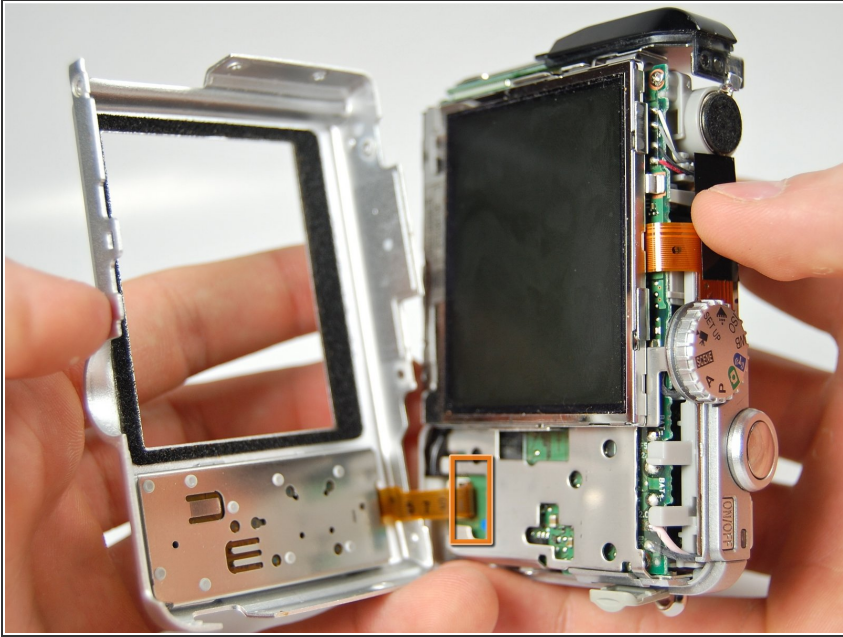
- Using a plastic opening tool, pry the front casing of the camera.
- Continue this motion all around the front casing of the camera.
- Gently pull apart the front casing from the rest of the camera.

Step 6



- Using the plastic opening tool pry the back casing of the camera.

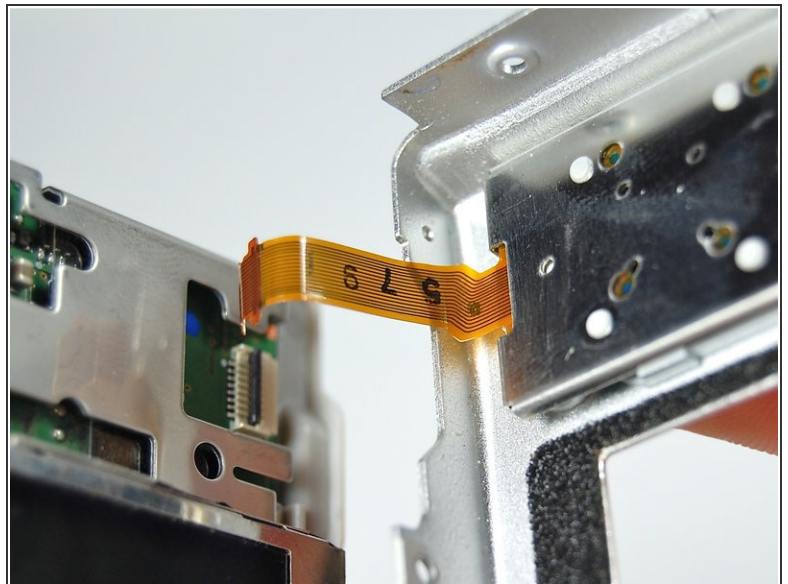
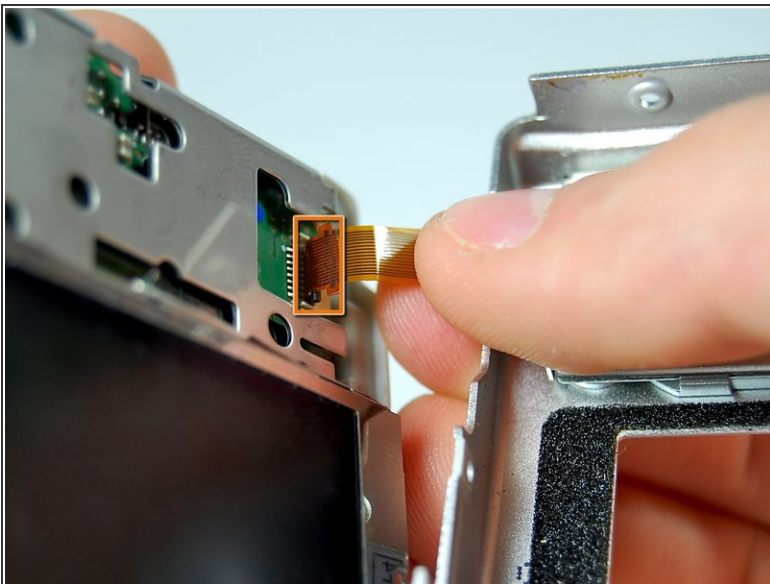
Step 7



⚠ Orange ribbon is fragile

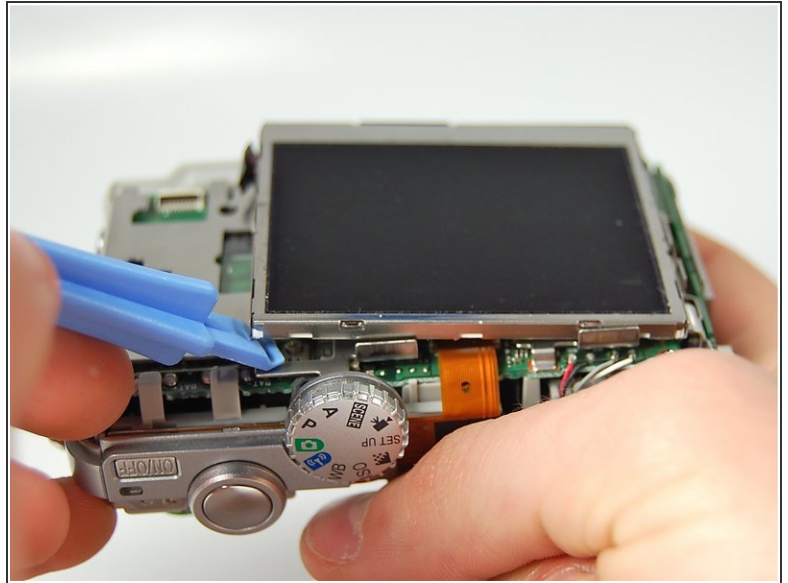
- Carefully pull apart the back casing of the camera from the front of the camera without tearing the orange ribbon.

Step 8



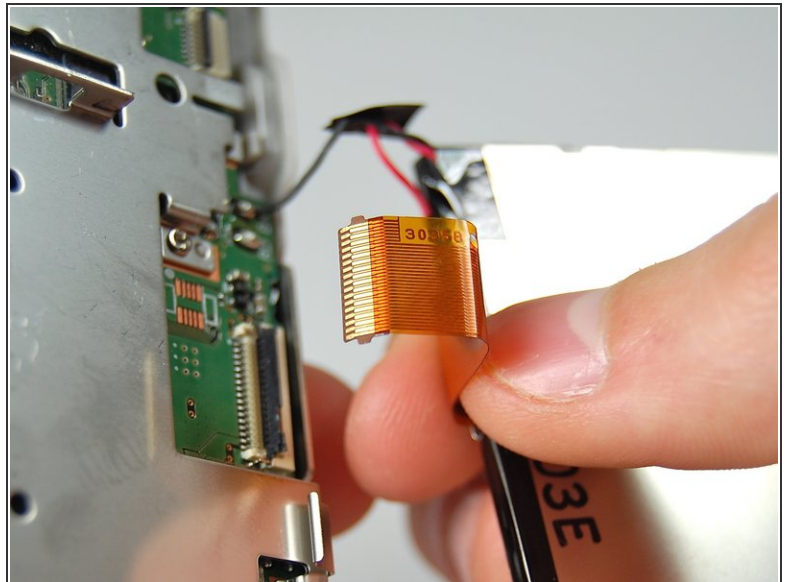
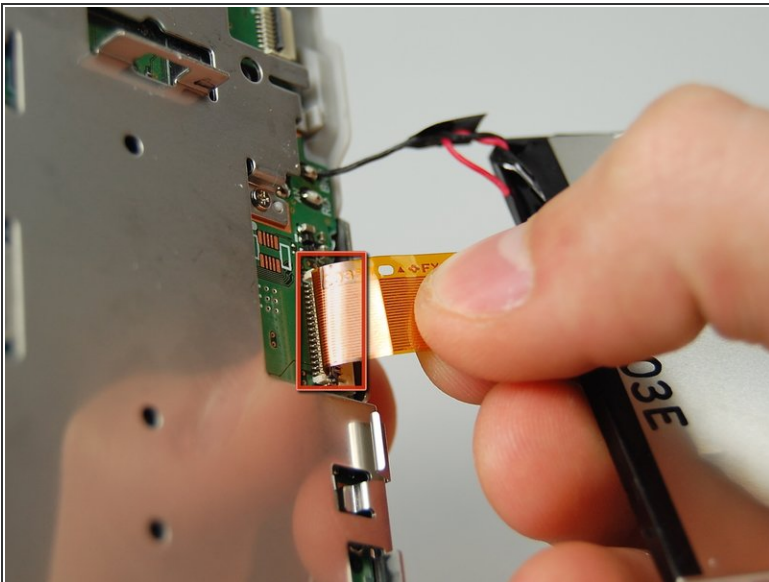
- Pull down the on the black latch to carefully separate the orange ribbon from the motherboard.
- Pull apart the orange ribbon and front casing from the rest of the camera.

Step 9 — LCD Screen



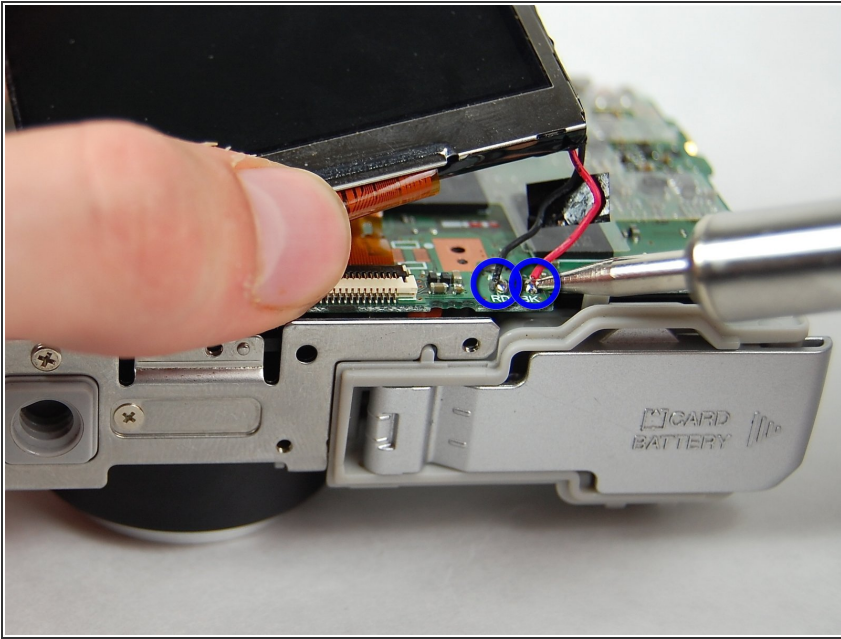
- Use plastic opening tool to carefully pry the LCD Screen from the camera.

Step 10



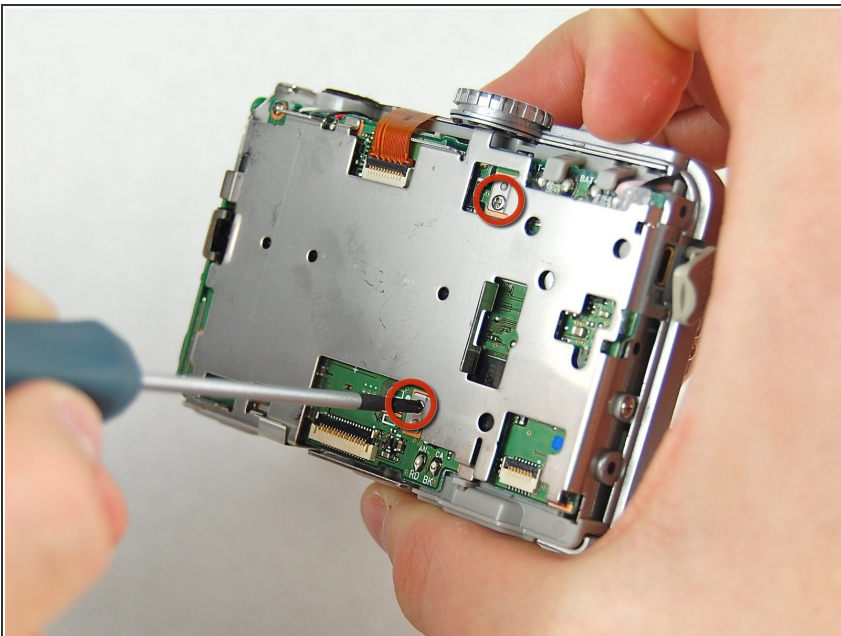
- Gently pull the ribbon cable down to release the latch, then pull up to remove it from the motherboard.

Step 11



- De-solder the black and red wires from the mainboard.
- ⚠ Using a soldering iron can be dangerous! Refer to the [iFixit Soldering Iron Safety Information Page](#) Use caution while attempting this repair.

Step 12 — WiFi Card



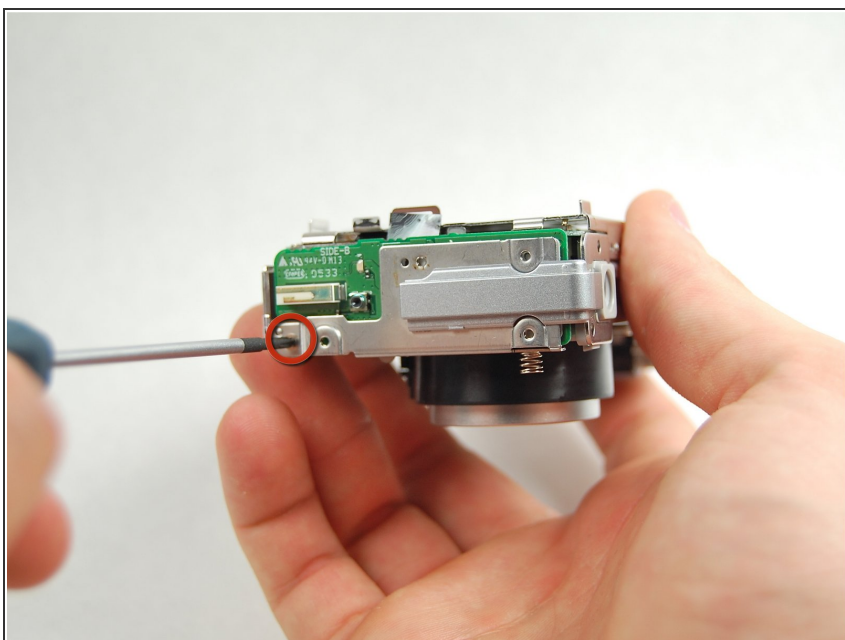
- Continue by removing two screws from the back of the camera body.

Step 13



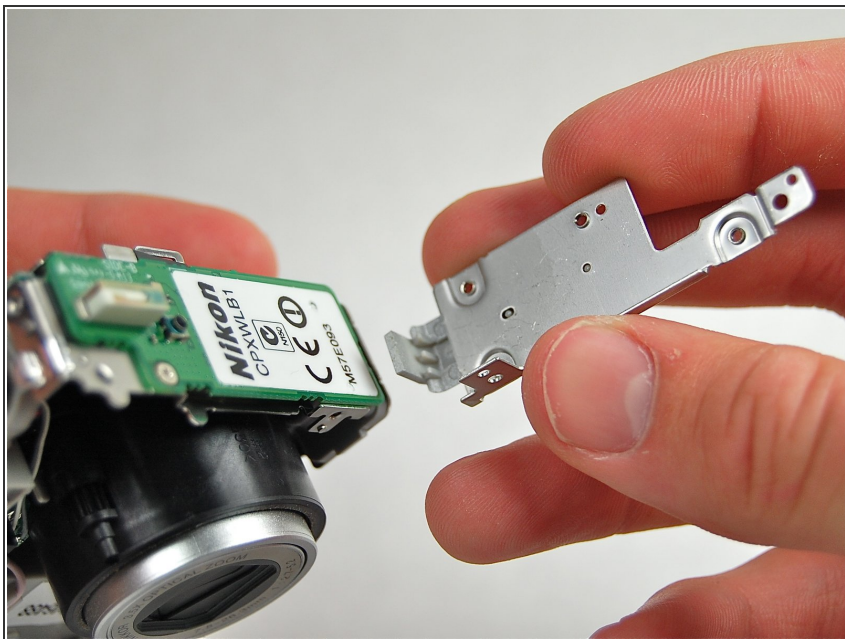
- Remove the screw connecting the wifi card cover to the front of the camera.

Step 14



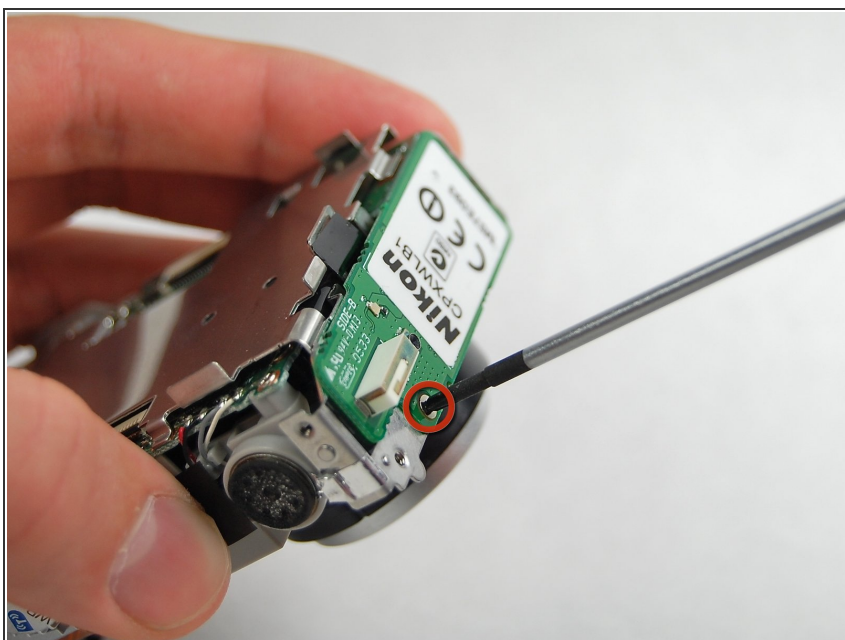
- Remove the final screw connecting the Wifi card cover to the case.

Step 15



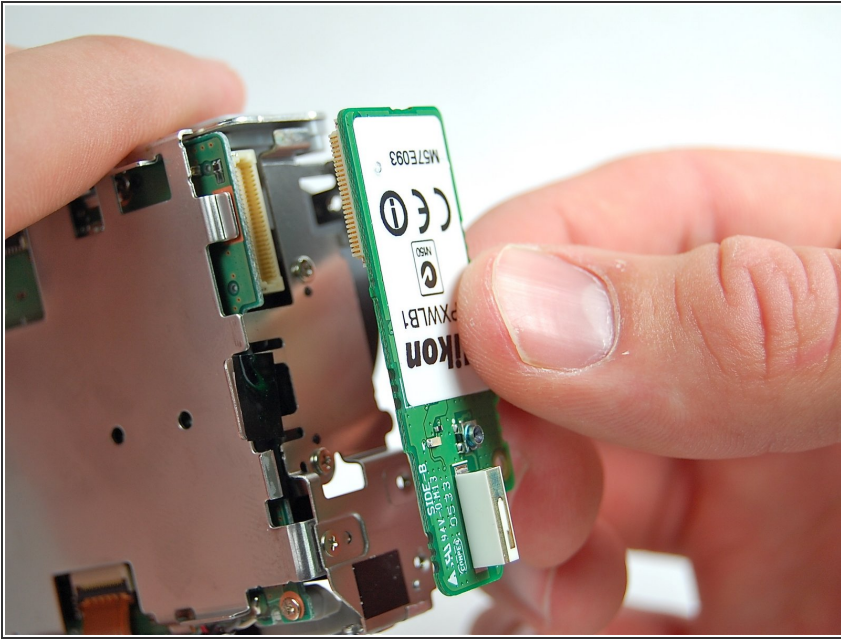
- Gently pull the Wifi card cover off of the camera body.

Step 16



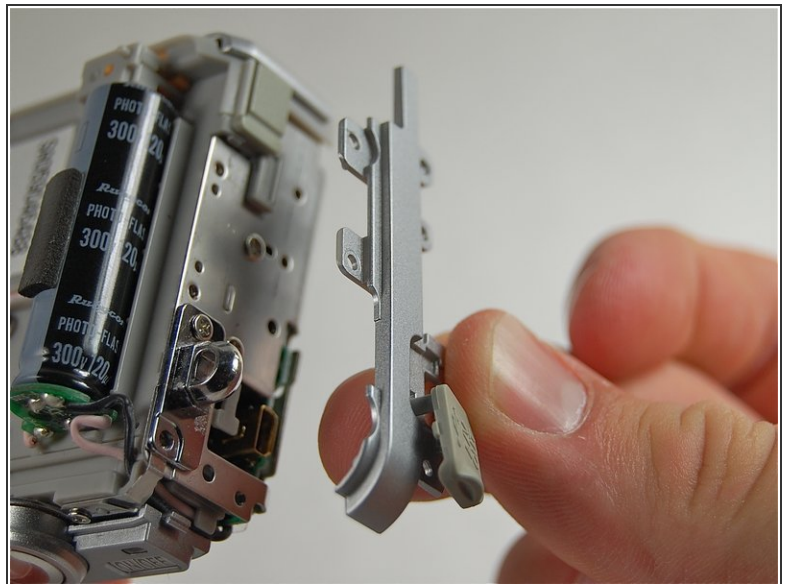
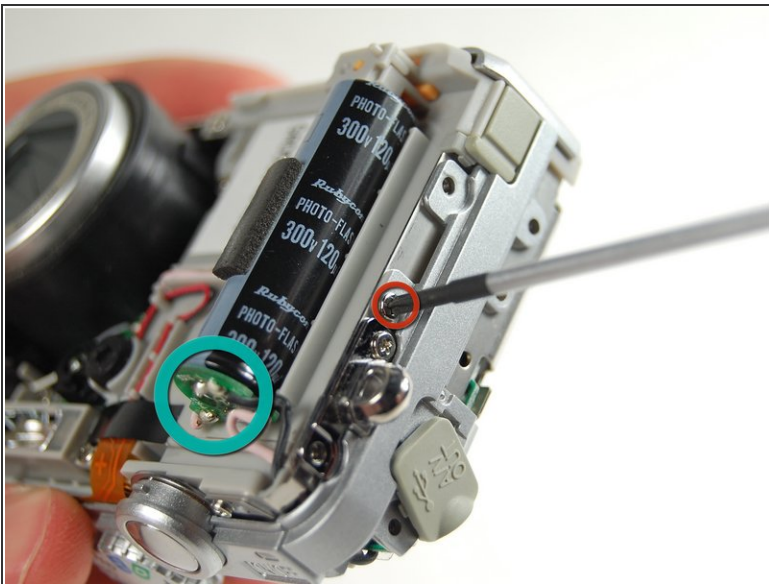
- Remove the screw holding the Wifi Card to the camera body.

Step 17



- Gently pull the WiFi card out of the camera.

Step 18 — Motherboard

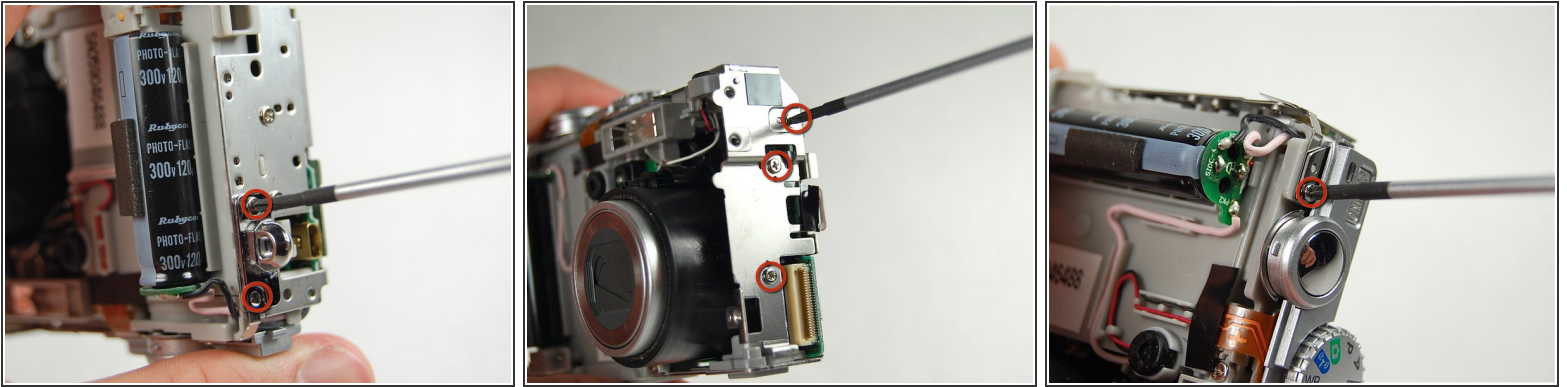


- Continue removing screws from the outside of the camera body.
- Next pull the plastic side panel off of the camera body.

⚠ Be extremely careful when holding the camera around the flash capacitor (circled in green), it is probably still charged, and it is very painful if you are shocked by it.

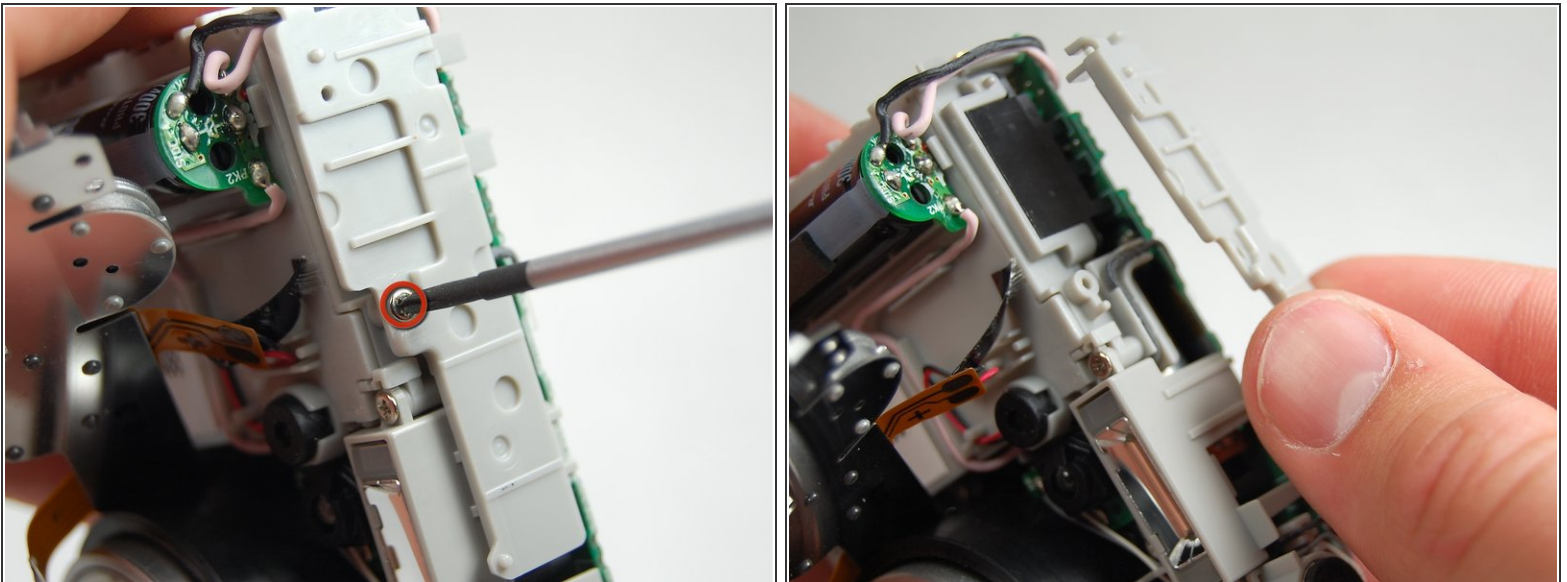
This document was generated on 2019-10-31 05:46:05 PM (MST).

Step 19



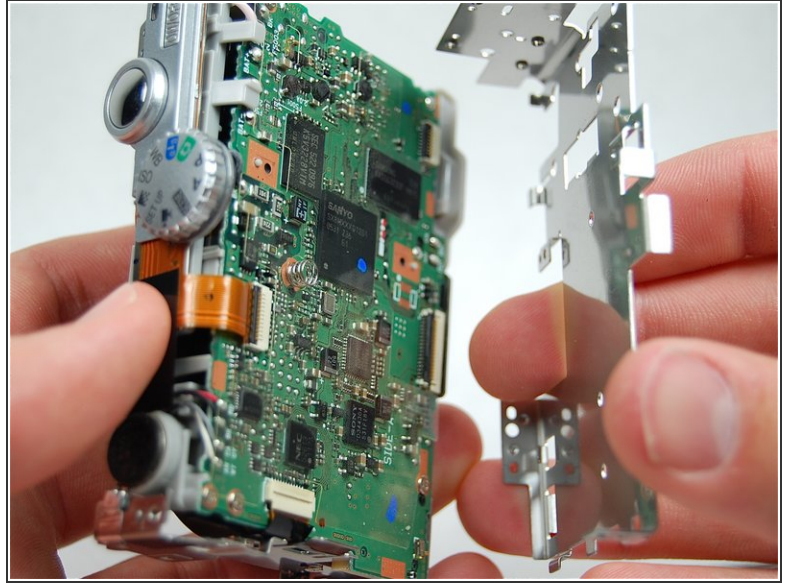
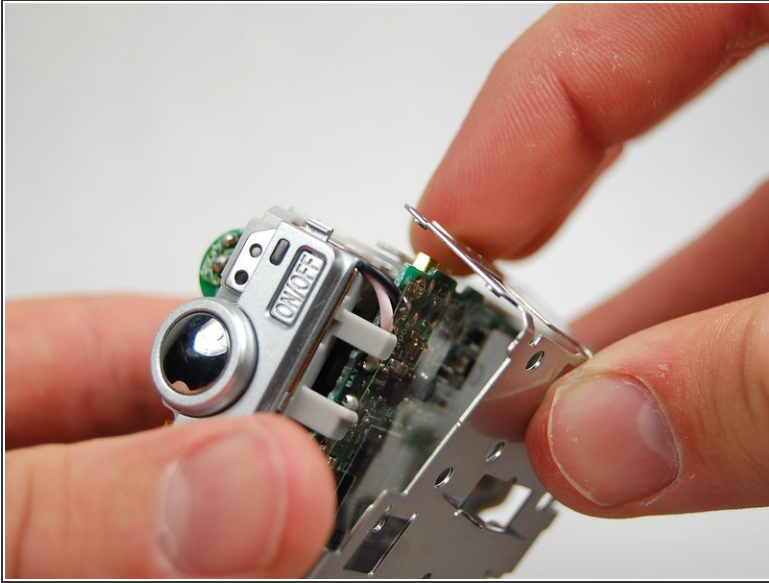
- Remove the two screws connecting the strap loop to the camera body.
- Remove the three screws from the left side of the camera body.
- Remove the screw by the shutter button.

Step 20



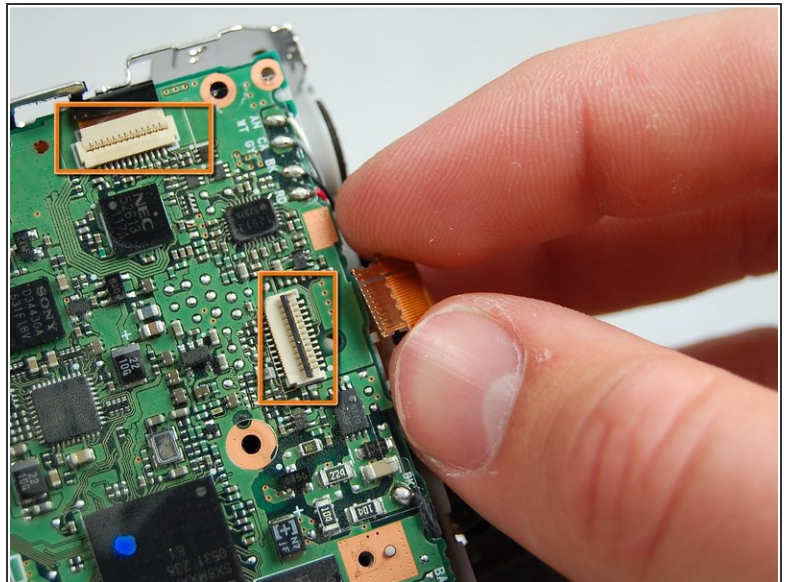
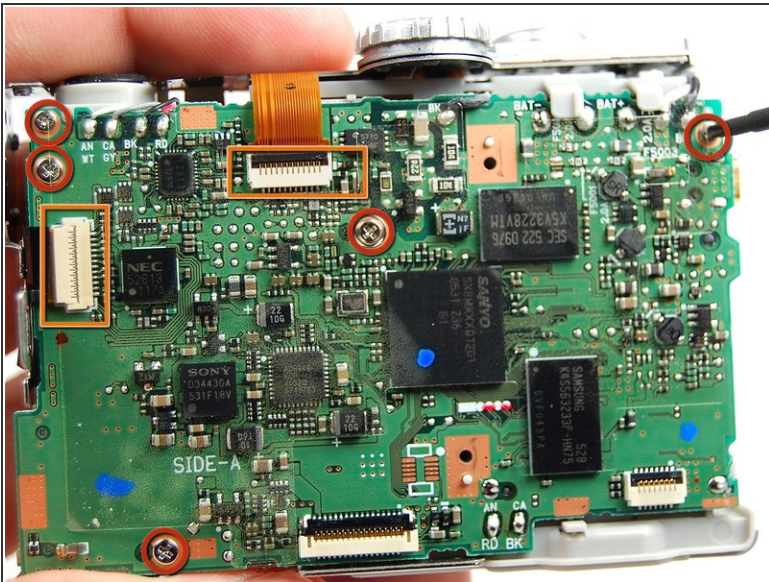
- Remove screws from plastic side cover.
- Pull off plastic cover.

Step 21



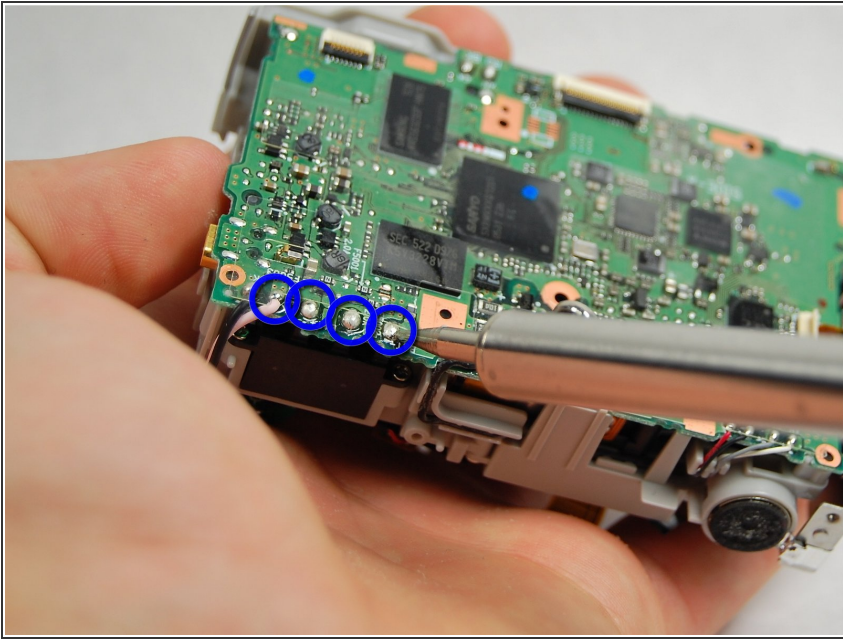
- Carefully remove the back housing body from the camera.

Step 22



- Remove the five screws connecting motherboard to the camera body.
- Carefully detach the two ribbon cables from the motherboard by releasing the black plastic catch, then pull the cables gently upwards out of the connector.

Step 23



- Carefully de-solder the four connections to the motherboard.

To reassemble your device, follow these instructions in reverse order.