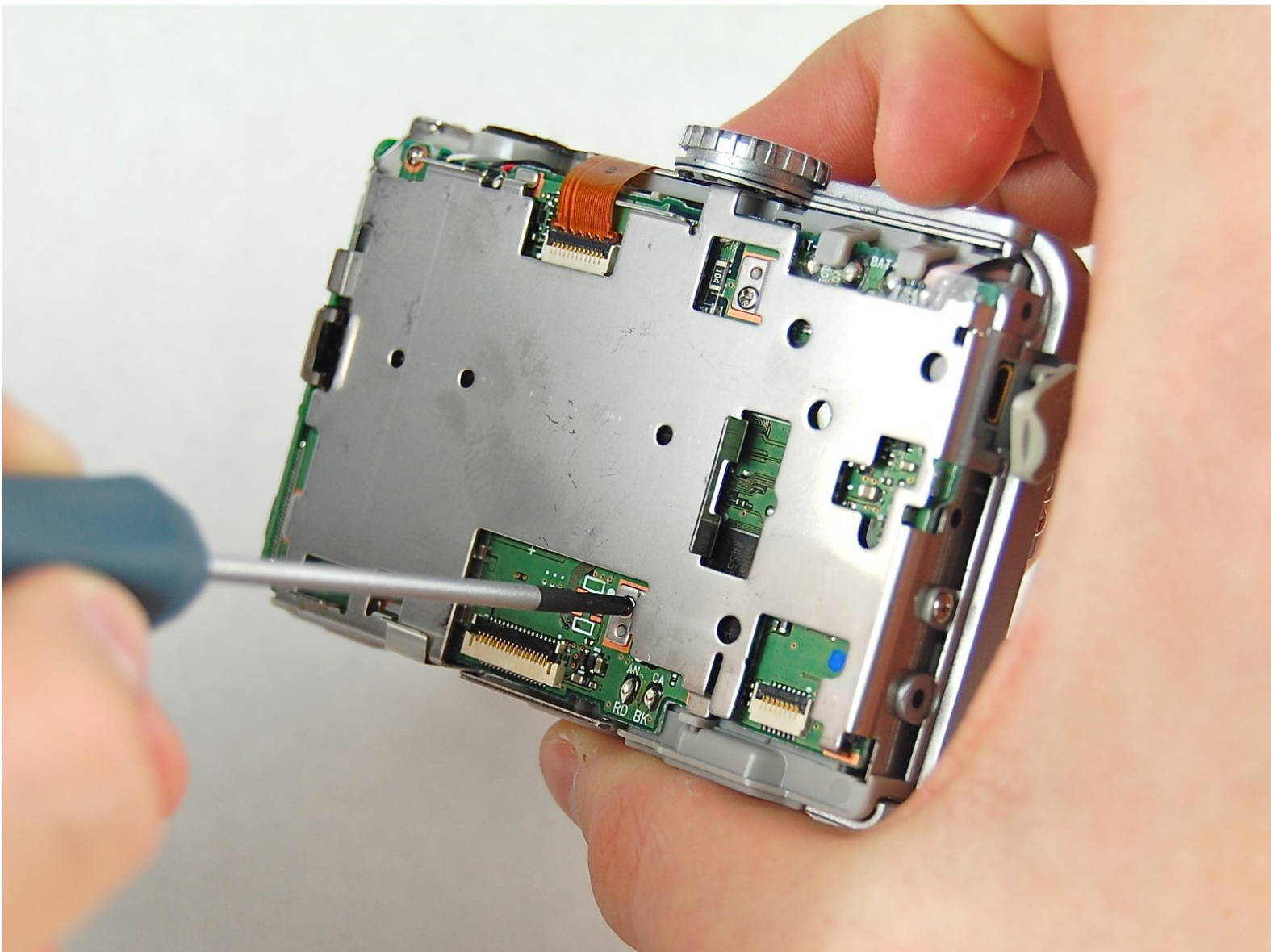




Nikon COOLPIX P2 WiFi Card Replacement

Replacing the wireless adapter for your Nikon COOLPIX camera.

Written By: Joshua Avery

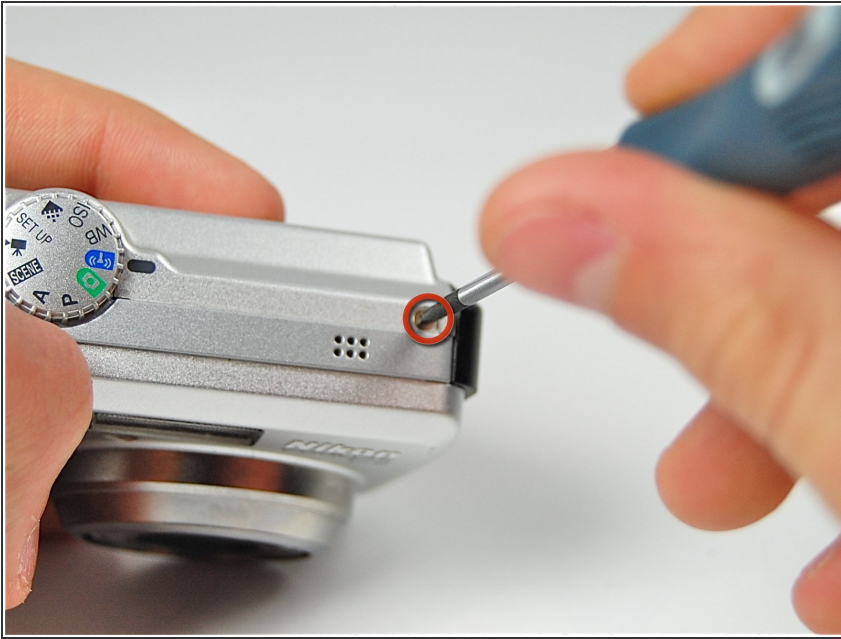




TOOLS:

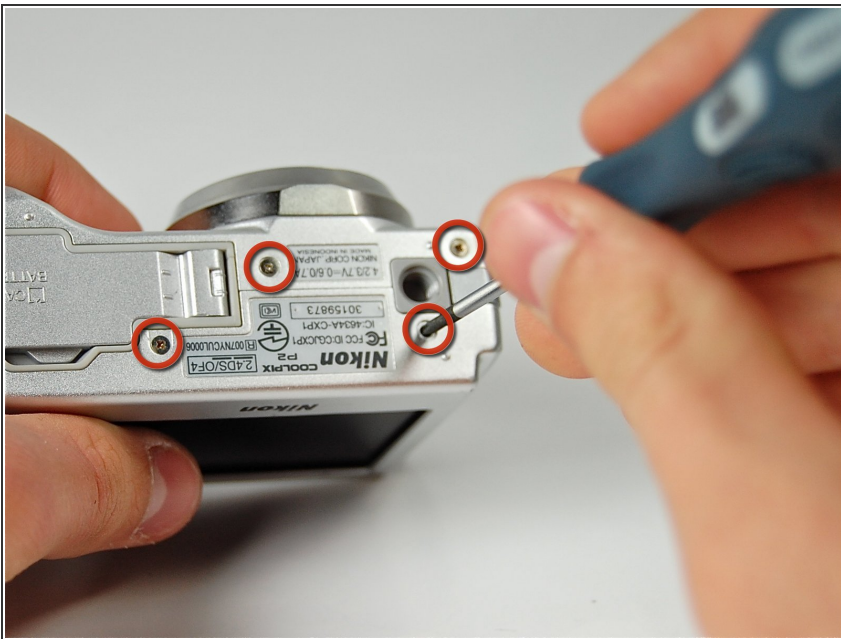
- [Phillips #00 Screwdriver](#) (1)
- [iFixit Opening Tools](#) (1)
- [Soldering Iron](#) (1)

Step 1 — Case



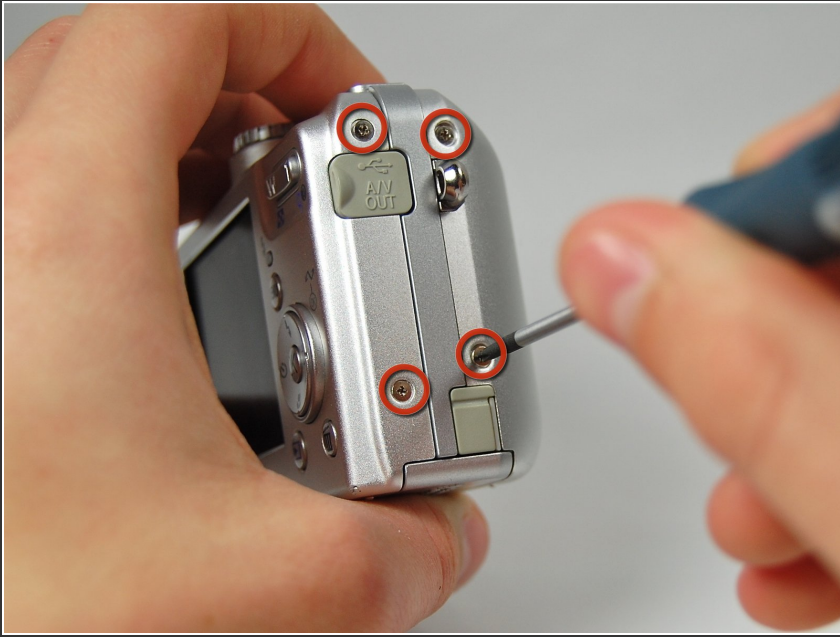
- Remove the screw located near the speaker port using a Phillips 00 screwdriver.

Step 2



- Turn camera upside down so that the battery compartment is facing you.
- Remove all four screws from the bottom of the camera with a Phillips 00 screwdriver.

Step 3



- Rotate the camera to the opposite side where the A/V outlet is located.
- Unscrew and remove all four screws with a Phillips 00 screwdriver.

Step 4



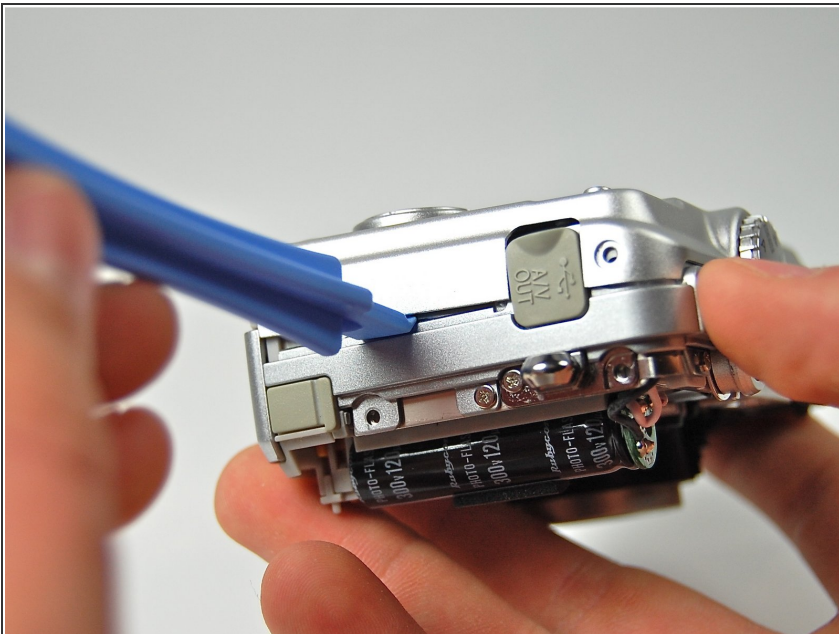
- Turn the camera so that the Wi-Fi adapter is facing you.
- Unscrew and remove all four screws with a Phillips 00 screwdriver.

Step 5



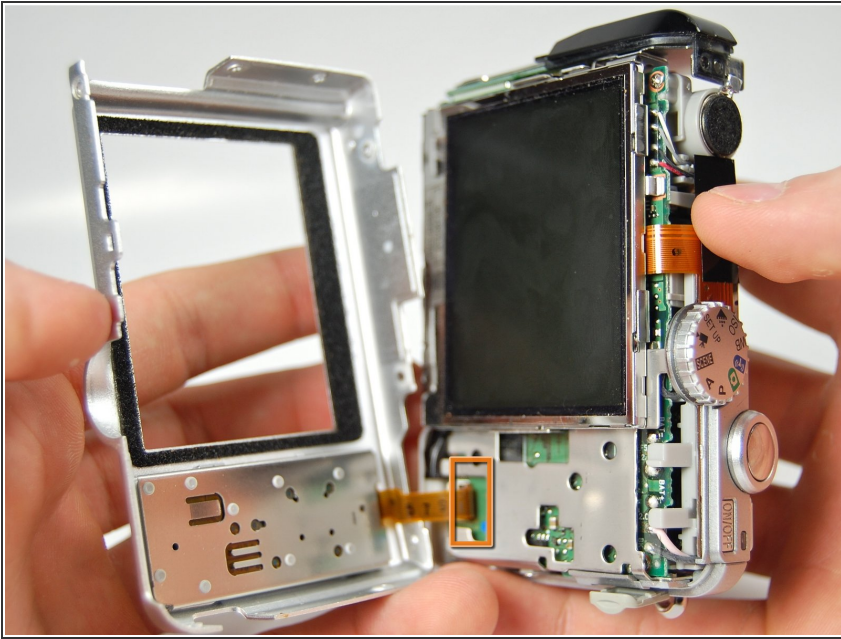
- Using a plastic opening tool, pry the front casing of the camera.
- Continue this motion all around the front casing of the camera.
- Gently pull apart the front casing from the rest of the camera.

Step 6



- Using the plastic opening tool pry the back casing of the camera.

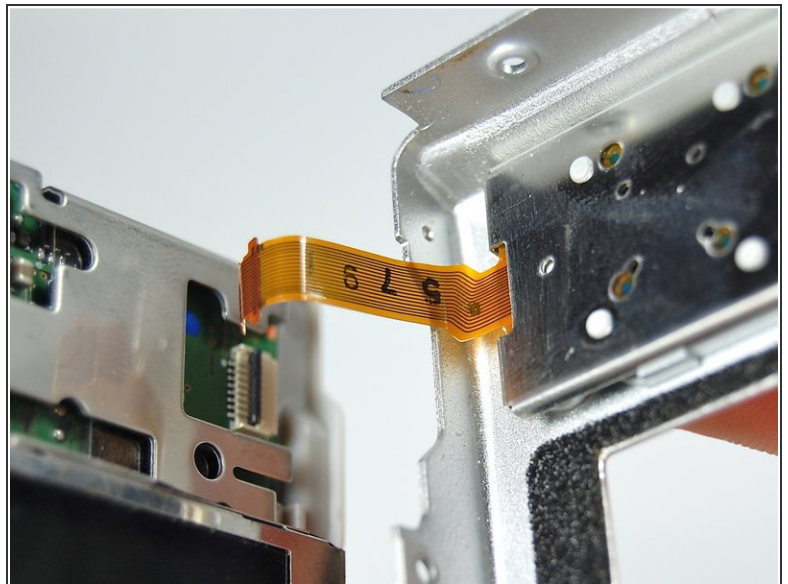
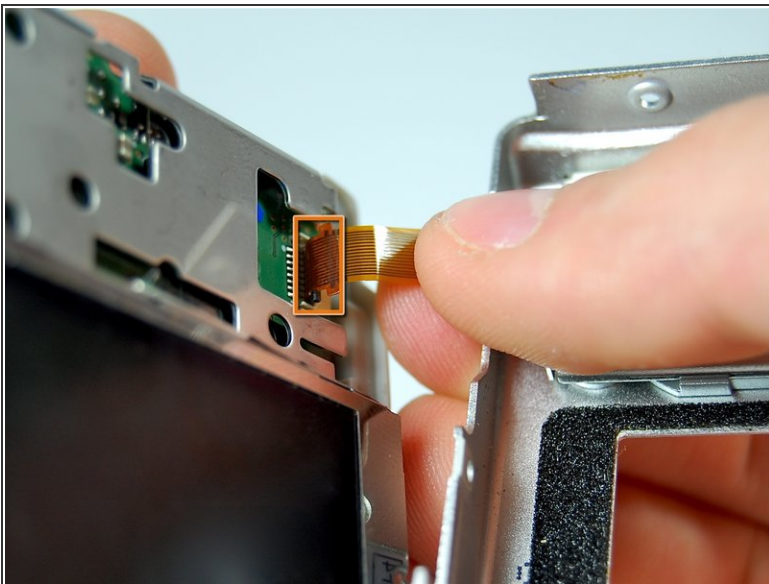
Step 7



 Orange ribbon is fragile

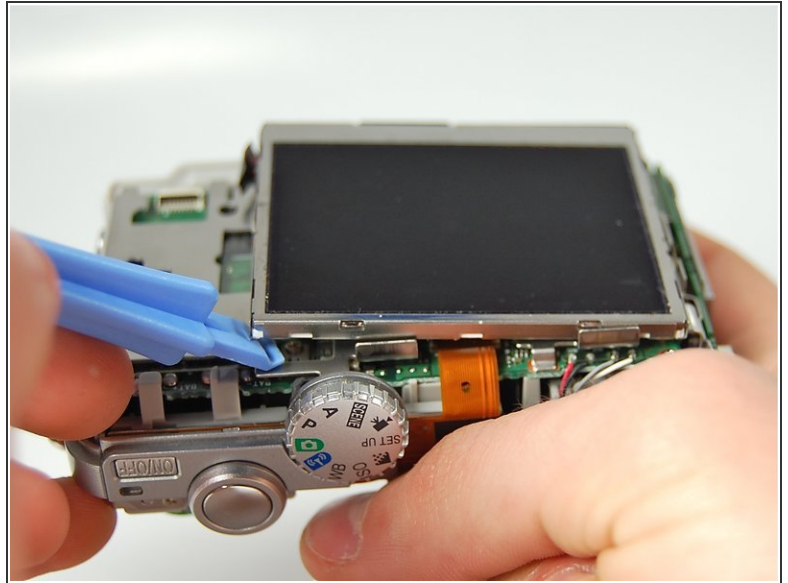
- Carefully pull apart the back casing of the camera from the front of the camera without tearing the orange ribbon.

Step 8



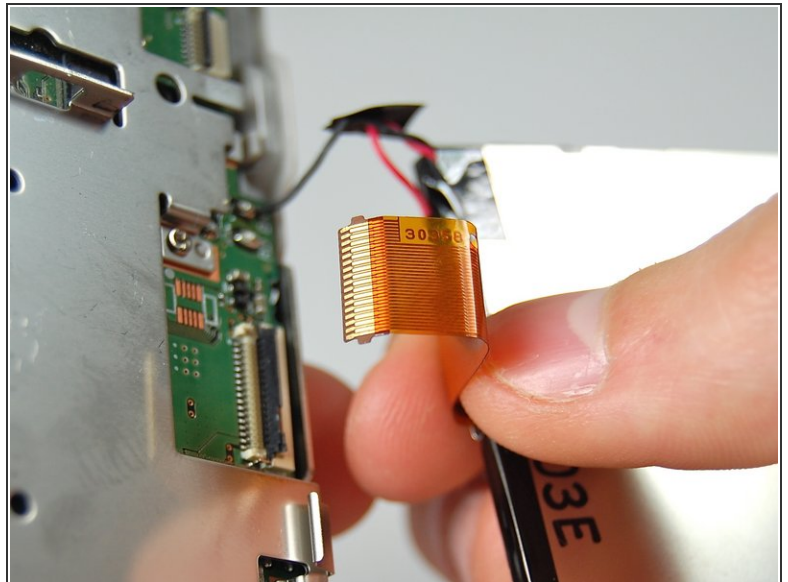
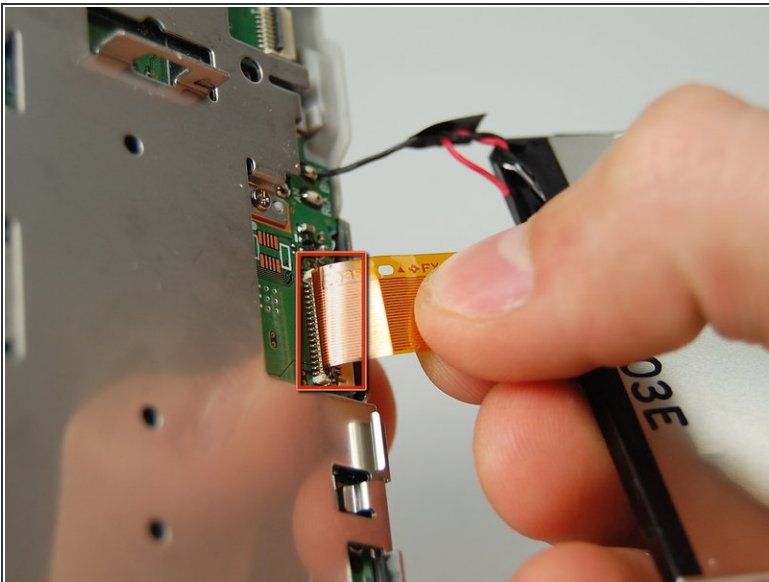
- Pull down the on the black latch to carefully separate the orange ribbon from the motherboard.
- Pull apart the orange ribbon and front casing from the rest of the camera.

Step 9 — LCD Screen



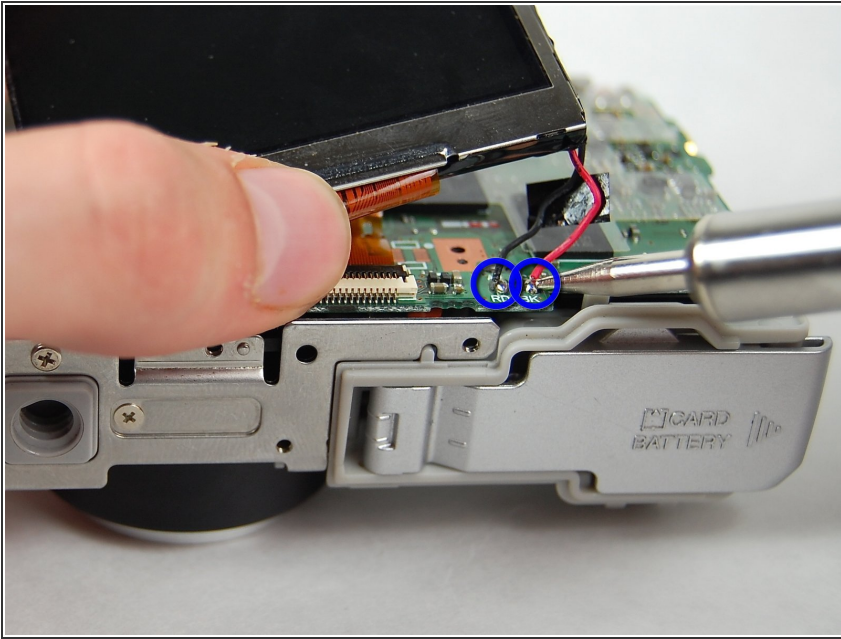
- Use plastic opening tool to carefully pry the LCD Screen from the camera.

Step 10



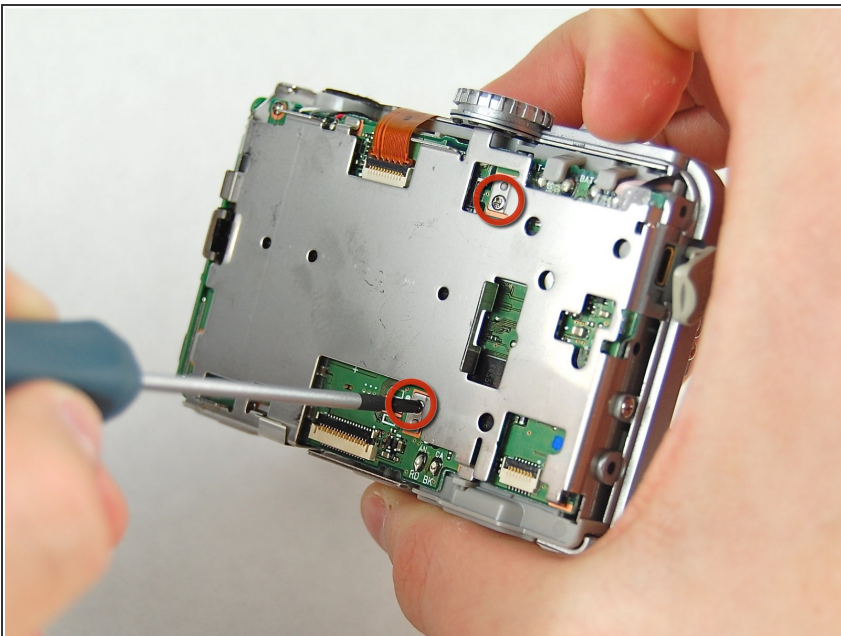
- Gently pull the ribbon cable down to release the latch, then pull up to remove it from the motherboard.

Step 11



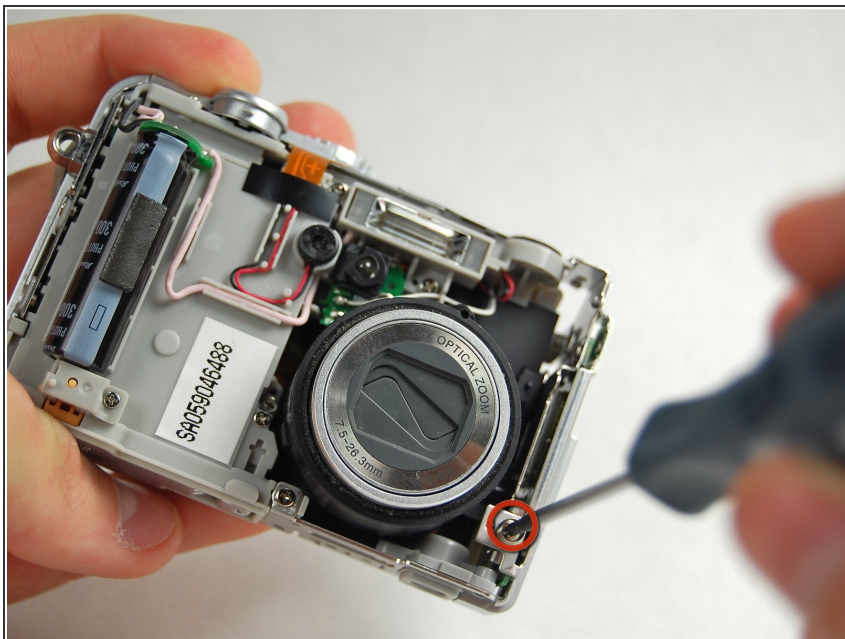
- De-solder the black and red wires from the mainboard.
- ⚠ Using a soldering iron can be dangerous! Refer to the [iFixit Soldering Iron Safety Information Page](#) Use caution while attempting this repair.

Step 12 — WiFi Card



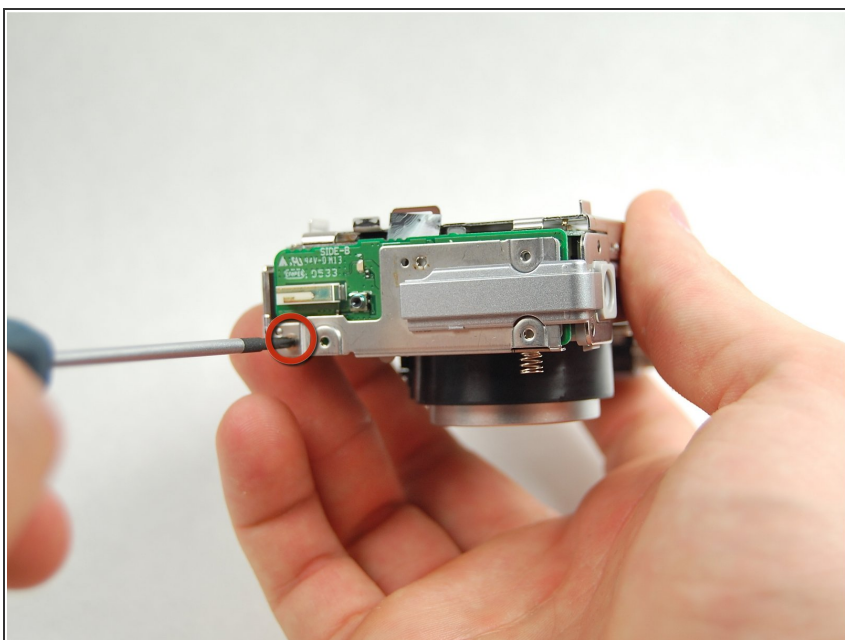
- Continue by removing two screws from the back of the camera body.

Step 13



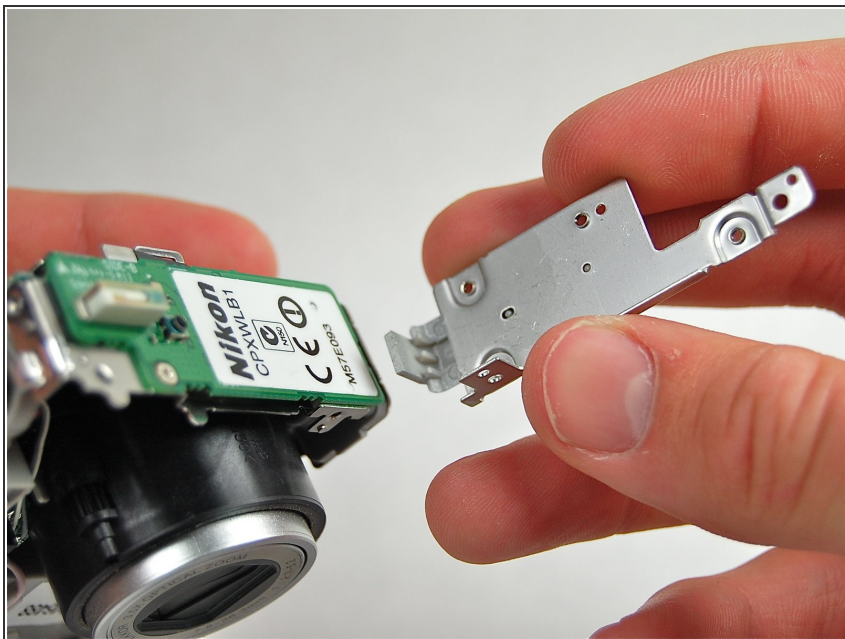
- Remove the screw connecting the wifi card cover to the front of the camera.

Step 14



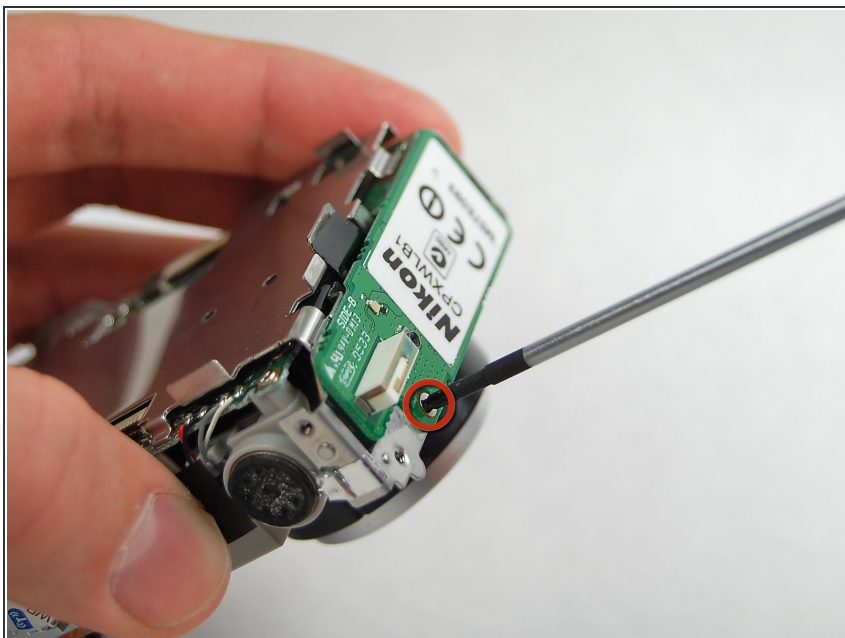
- Remove the final screw connecting the Wifi card cover to the case.

Step 15



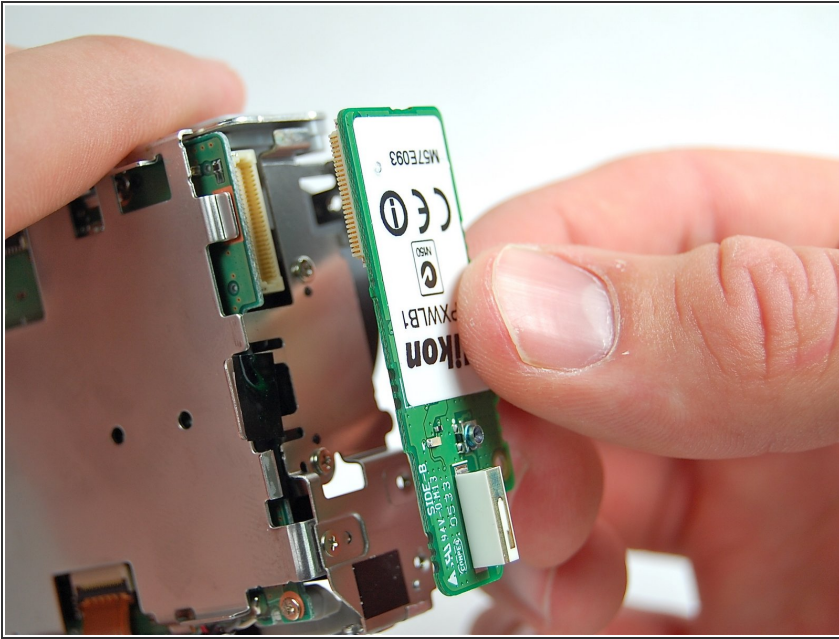
- Gently pull the Wifi card cover off of the camera body.

Step 16



- Remove the screw holding the Wifi Card to the camera body.

Step 17



- Gently pull the WiFi card out of the camera.

To reassemble your device, follow these instructions in reverse order.