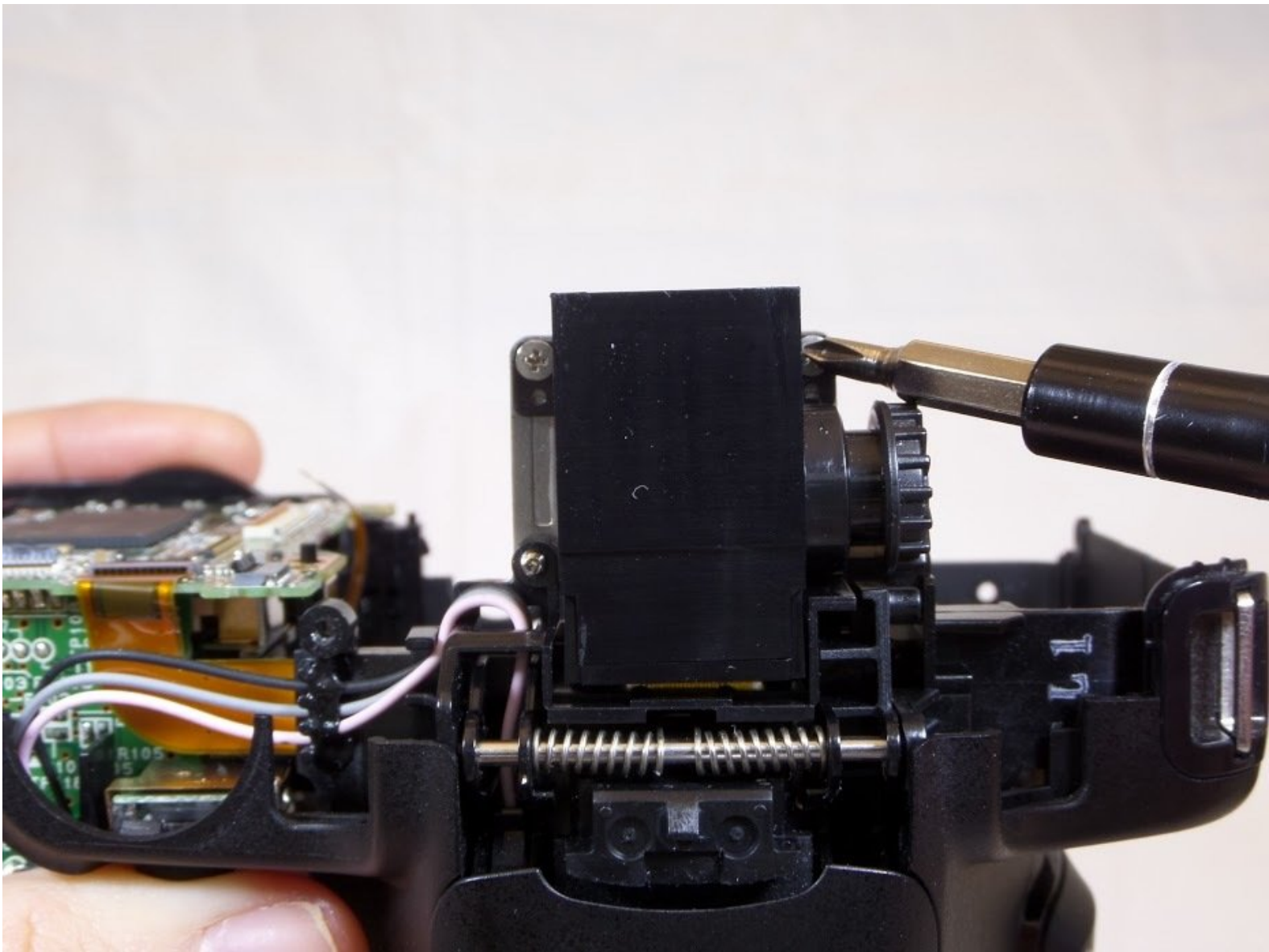




# Nikon COOLPIX P600 Viewfinder Replacement

This guide will provide a detailed step-by-step guide on how to replace the viewfinder of the Nikon COOLPIX P600.

Written By: Stephen Lee



---

## INTRODUCTION

## Additional Information

[Nikon COOLPIX P600 Technical Specifications](#)

[Nikon COOLPIX P600 Service & Support](#)

---

### TOOLS:

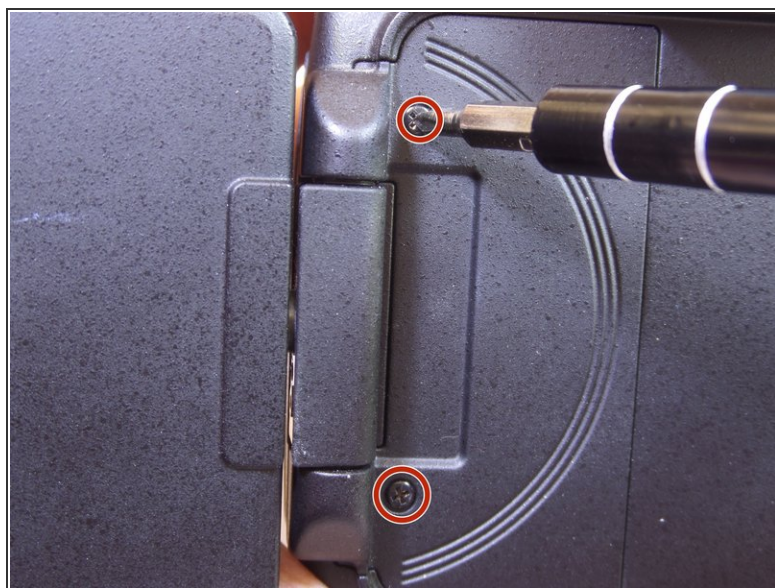
- [Essential Electronics Toolkit \(1\)](#)

## Step 1 — Tripod Mount



- Position the back of the camera facing you and open the LCD screen to the left.

## Step 2



- Use a Phillips screwdriver to unscrew the two 5.556 mm screws under the LCD screen.



## Step 3



- Use a Phillips screwdriver and remove the eleven 5.556 mm screws around the outside frame of the camera.

## Step 4



- Open the "HDMI" rubber flap.
- Use a Phillips screwdriver and remove the 5.556 mm screw underneath the flap.

## Step 5



- ❗ The flash button is located on the left side of the built-in flash compartment.
- Press the flash button (as shown) to access flash.

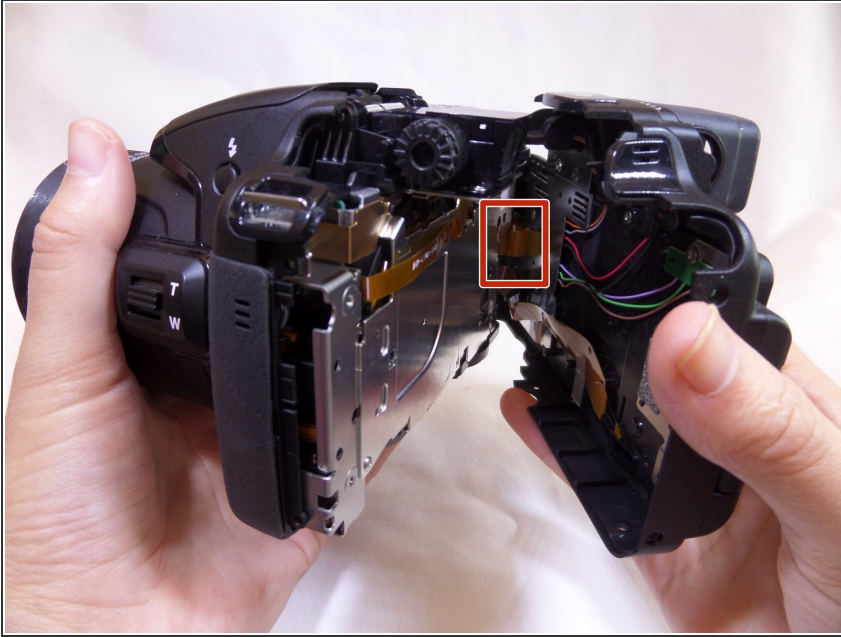
## Step 6



- Use a spudger to wedge underneath the flash
  - Pry (up and down) to separate.
- ⚠ It is important to choose a tool that is ESD-safe to avoid accidental damage to the device. A black nylon spudger, or plastic opening tool, should be used whenever possible.

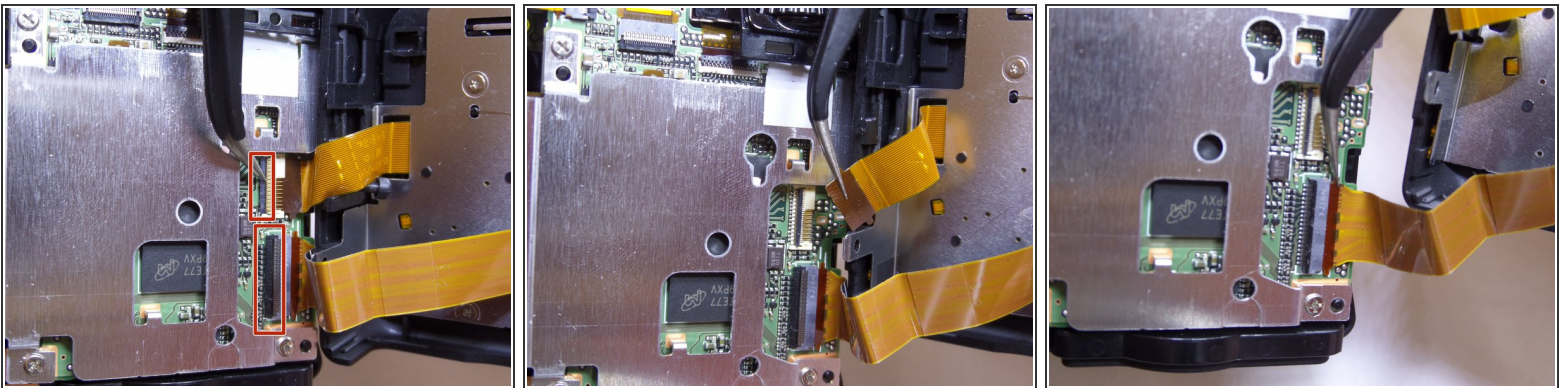


## Step 7



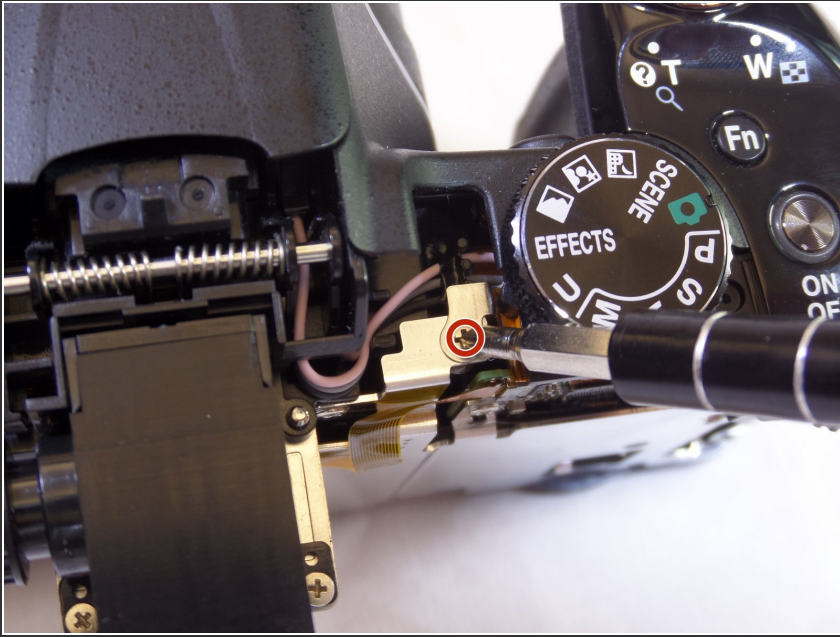
- Use your hands to gently pull the front and back of the camera apart.
- ⚠ Be careful not to damage the ribbon-wire shown in the red box.

## Step 8



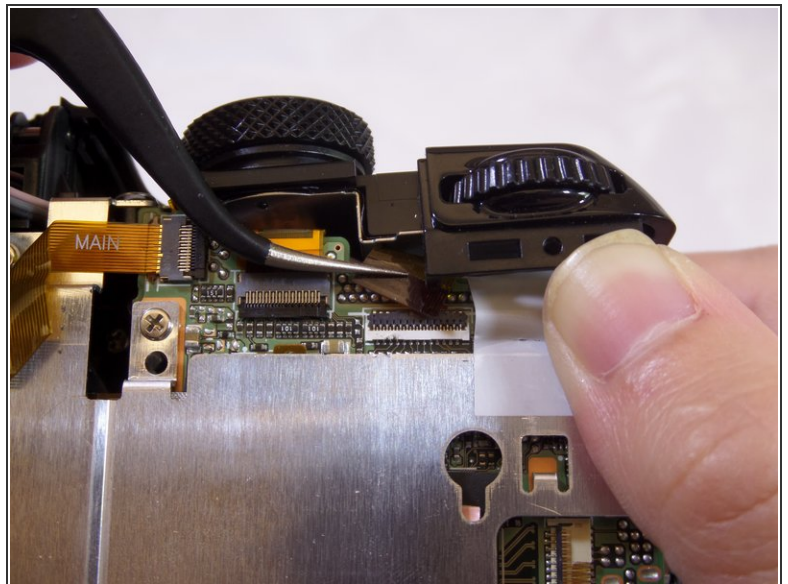
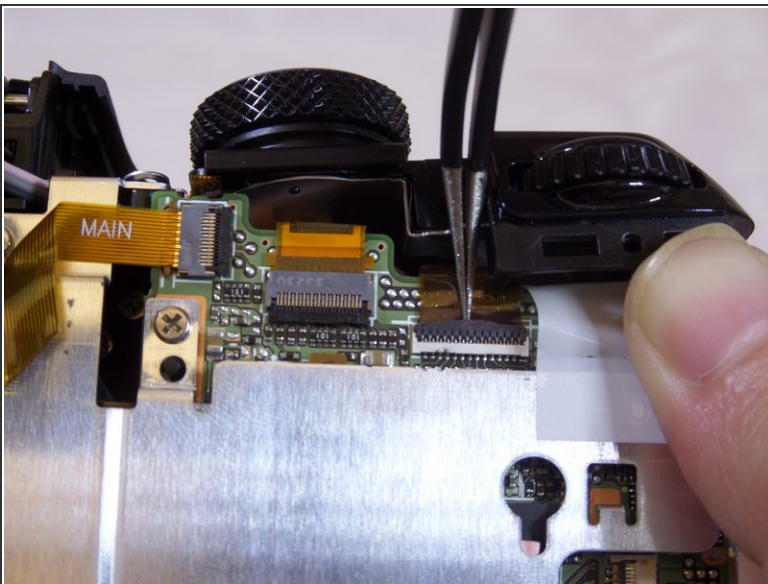
- Use needle-nose tweezers to gently lift the black/grey latch towards the ribbon-wire (the latch rotates upward to release and snaps down to lock).
- ⚠ Be careful not to break the latch. It cannot be replaced.
- Use tweezers to gently remove ribbon-wires.
- Pull the ribbon-wires towards the back-end of the camera.

## Step 9



- Use a Phillips screwdriver and remove the single 6.35 mm screw, left of the mode-adjustment dial.

## Step 10



- Use needle-nose tweezers to remove the large ribbon-wire located under the screw.
  - Gently wiggle the ribbon out in an upward motion.
- i** For easier access, you can push the black surface of the camera where the buttons and dials are located. Do not push too hard as this may break the plastic.



## Step 11



- Insert a plastic opening tool under the shutter button.
- Gently pry (back and forth) between the rubber grip and camera casing.

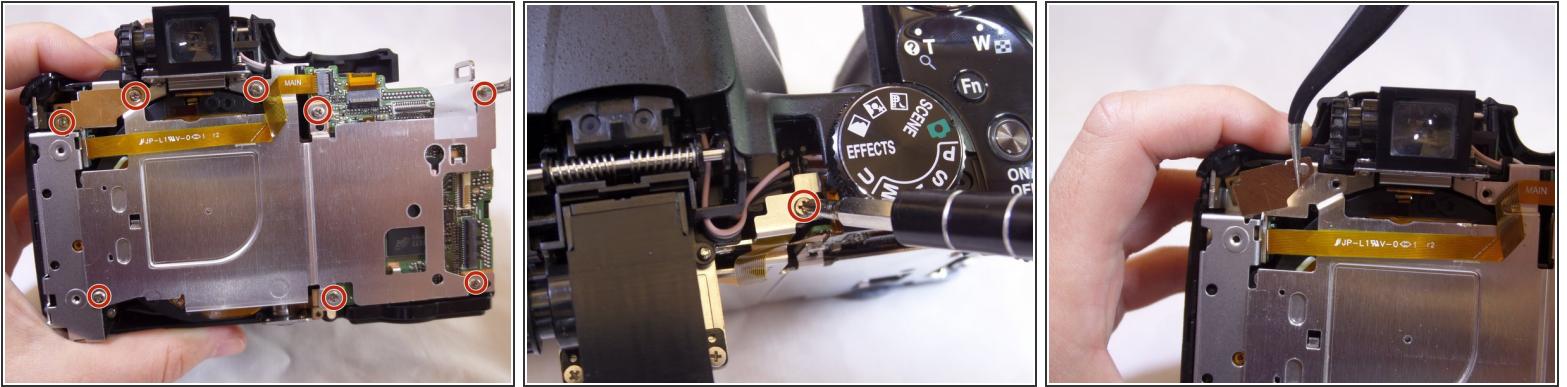
## Step 12



- Place hands around the camera. Hold onto the mode dial and grip under the shutter button.
- Gently push right thumb away and pull in left index finger to separate the camera halves.



## Step 13



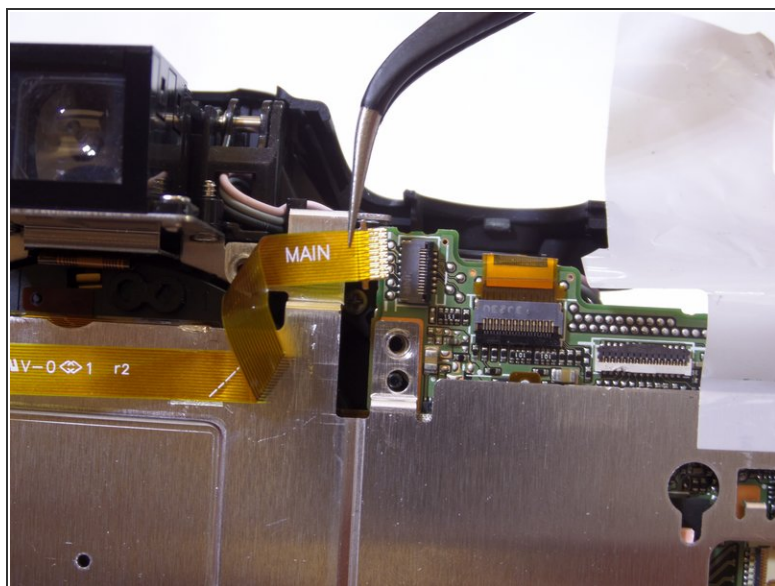
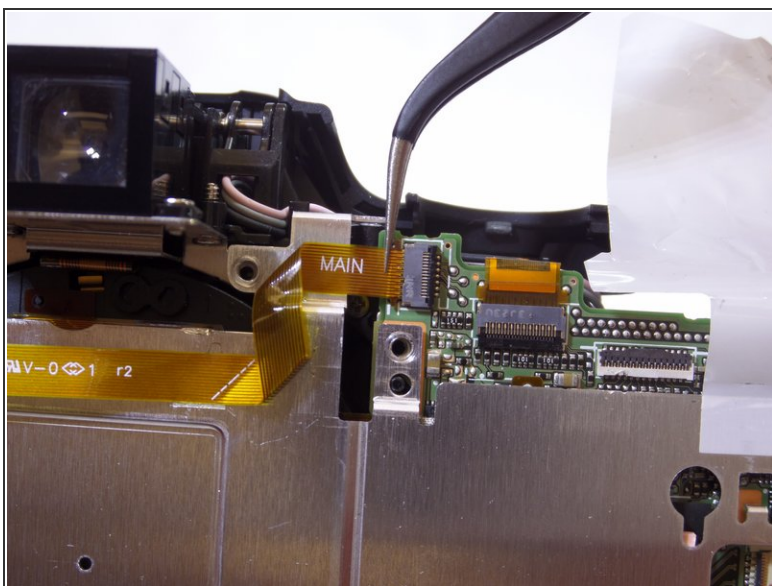
- Use a Phillips screwdriver to remove the nine 3.175 mm screws on the inside of the camera.
- Use tweezers to remove the golden bracket.

## Step 14



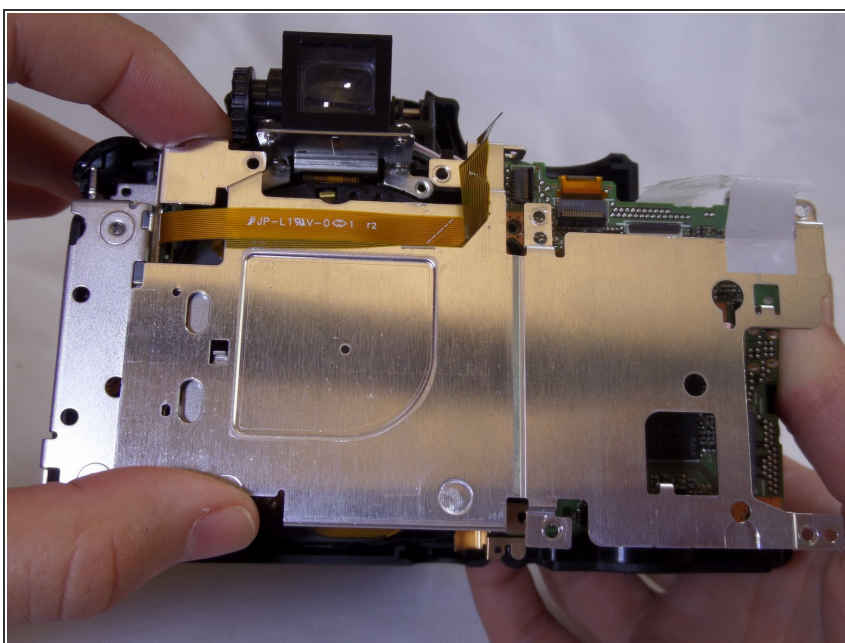
- Use tweezers to remove the white film under the shutter-release button.
- i* This white film is a cover for the electrical components. The camera will not be affected if it rips or comes off completely.
- ⚠** Be careful: three high-discharge capacitor leads are located under this film, and can result in electric shock if touched.

## Step 15



- Use tweezers to remove the yellow ribbon-wire.
- Gently wiggle it to the left and then out of its port.

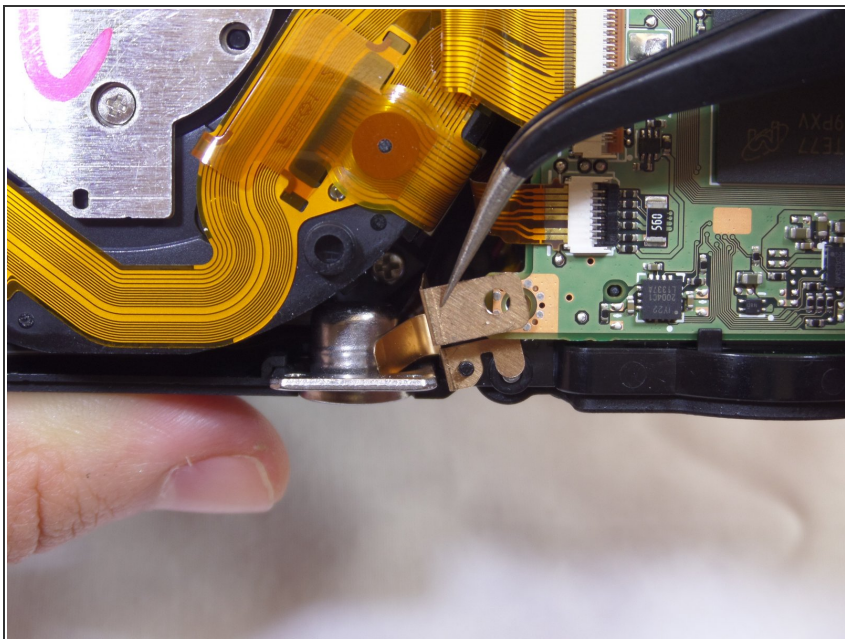
## Step 16



- Use hands to remove the metal cover.
- Pull the cover up.

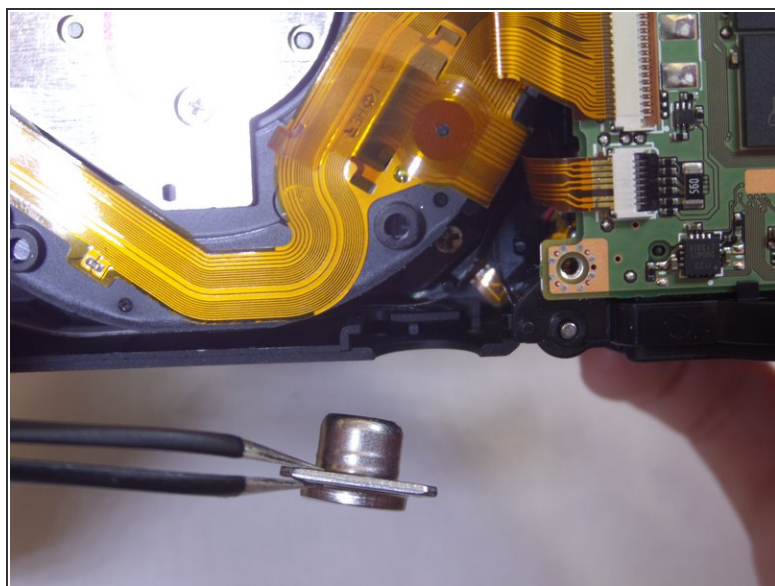
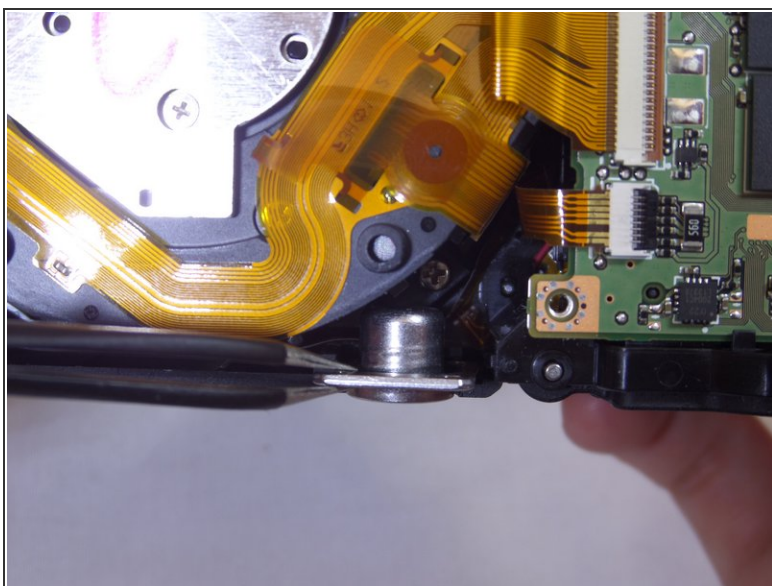


## Step 17



- Use tweezers to remove the golden bracket.

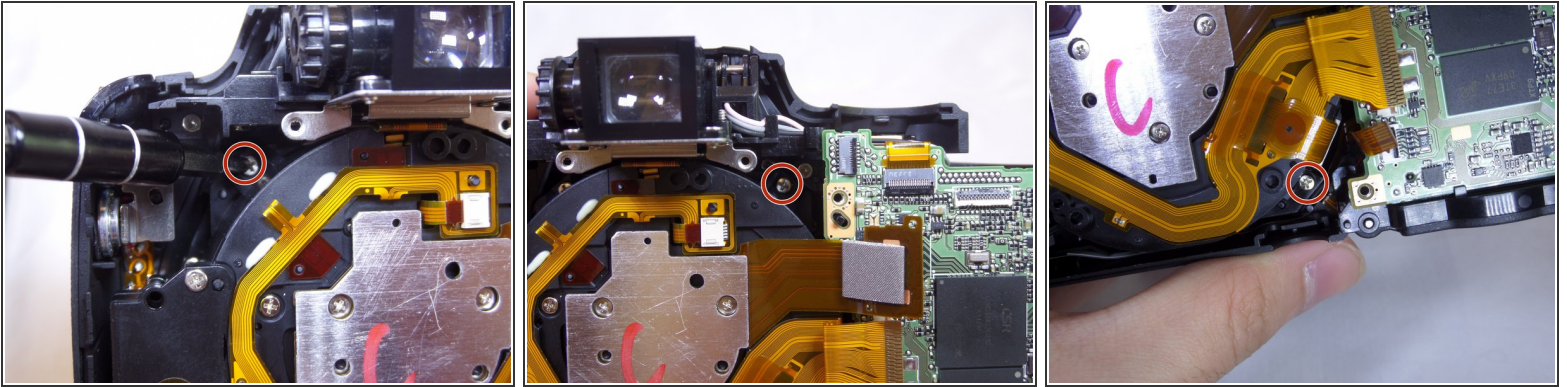
## Step 18



**i** The tripod connector is located at the bottom of the camera.

- Use tweezers to remove the tripod connector.

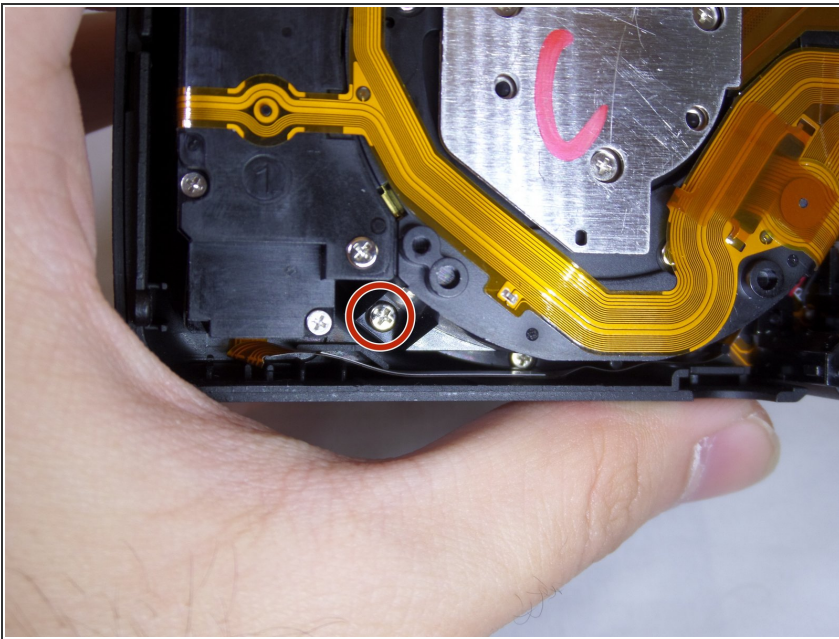
## Step 19 — Lens



- Unscrew the three 3.175mm screws.

⚠ Use caution to not to lose the screws in the cavities of the camera.

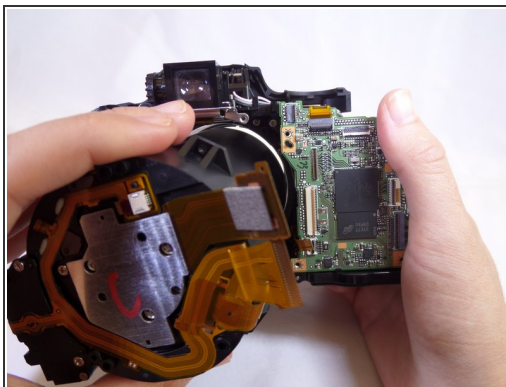
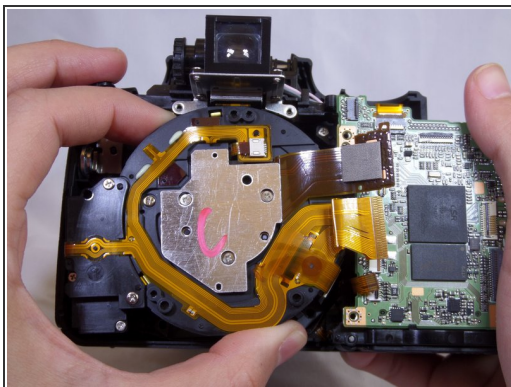
## Step 20



- Continue removing screws, keeping an awareness of the cavity right below the screw. It would be difficult to extract screw if lost in this cavity.

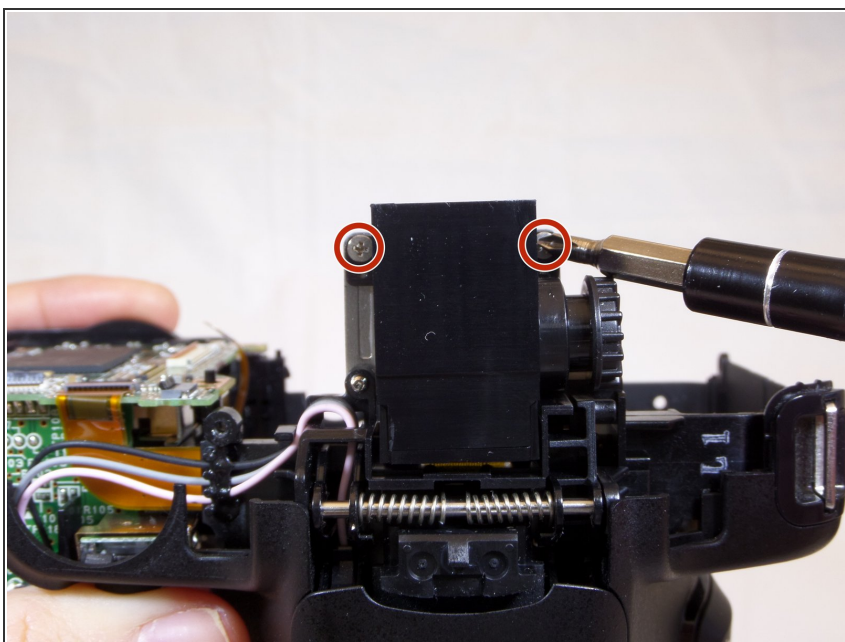


## Step 21



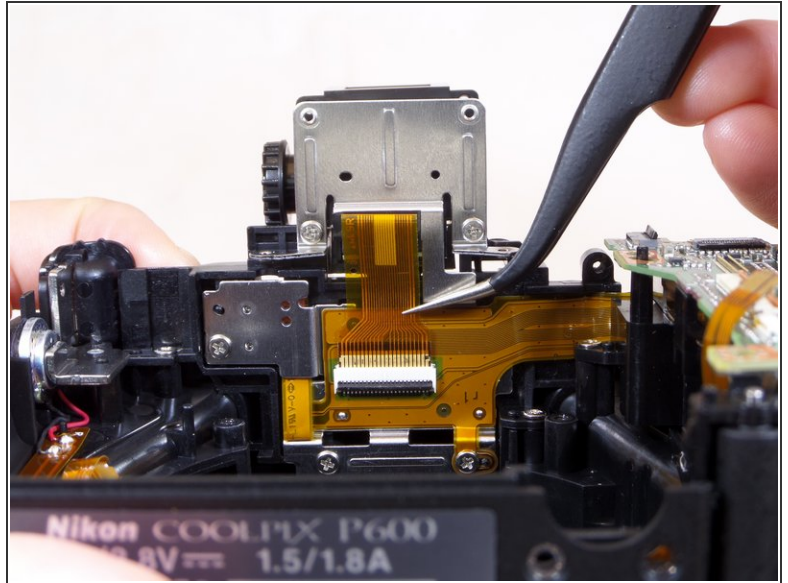
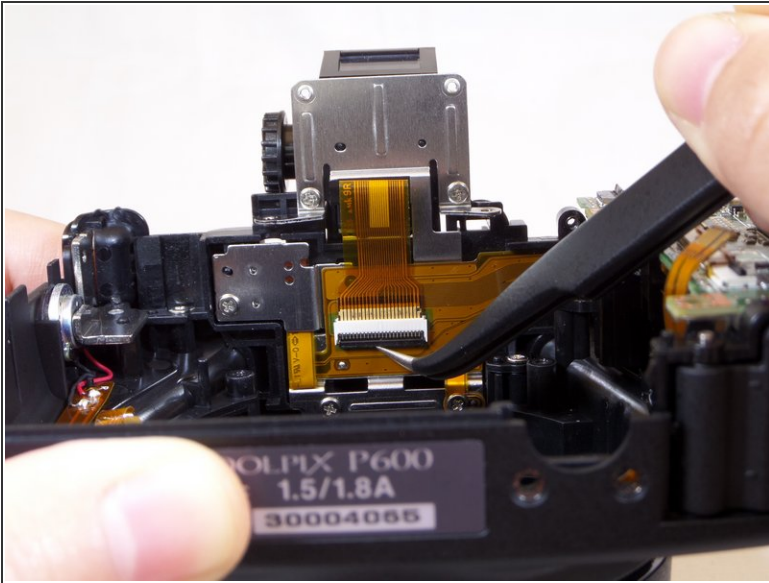
- Remove lens by pulling up vertically.
- Be careful not to damage any of the electrical ribbon on top of the lens.

## Step 22 — Viewfinder



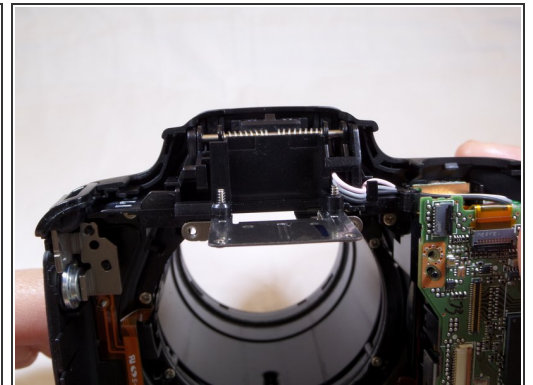
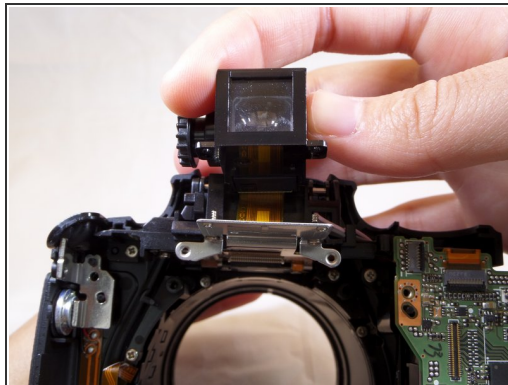
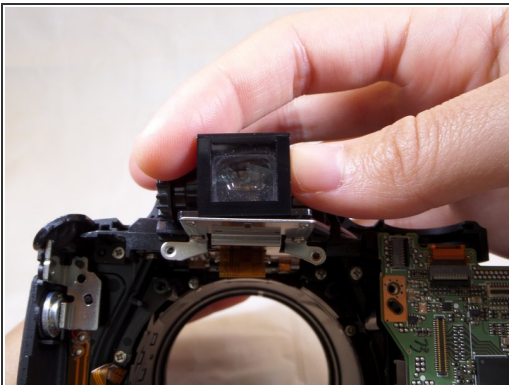
- Unscrew the 2 screws located at the top of the viewfinder.

## Step 23



- Unclip and pull out the yellow wire ribbon.

## Step 24



- Vertically lift the viewfinder piece for removal.
- ⓘ Carefully, as the wire ribbon is slowly removed out of its slot when viewfinder is pulled out.

To reassemble your device, follow these instructions in reverse order.