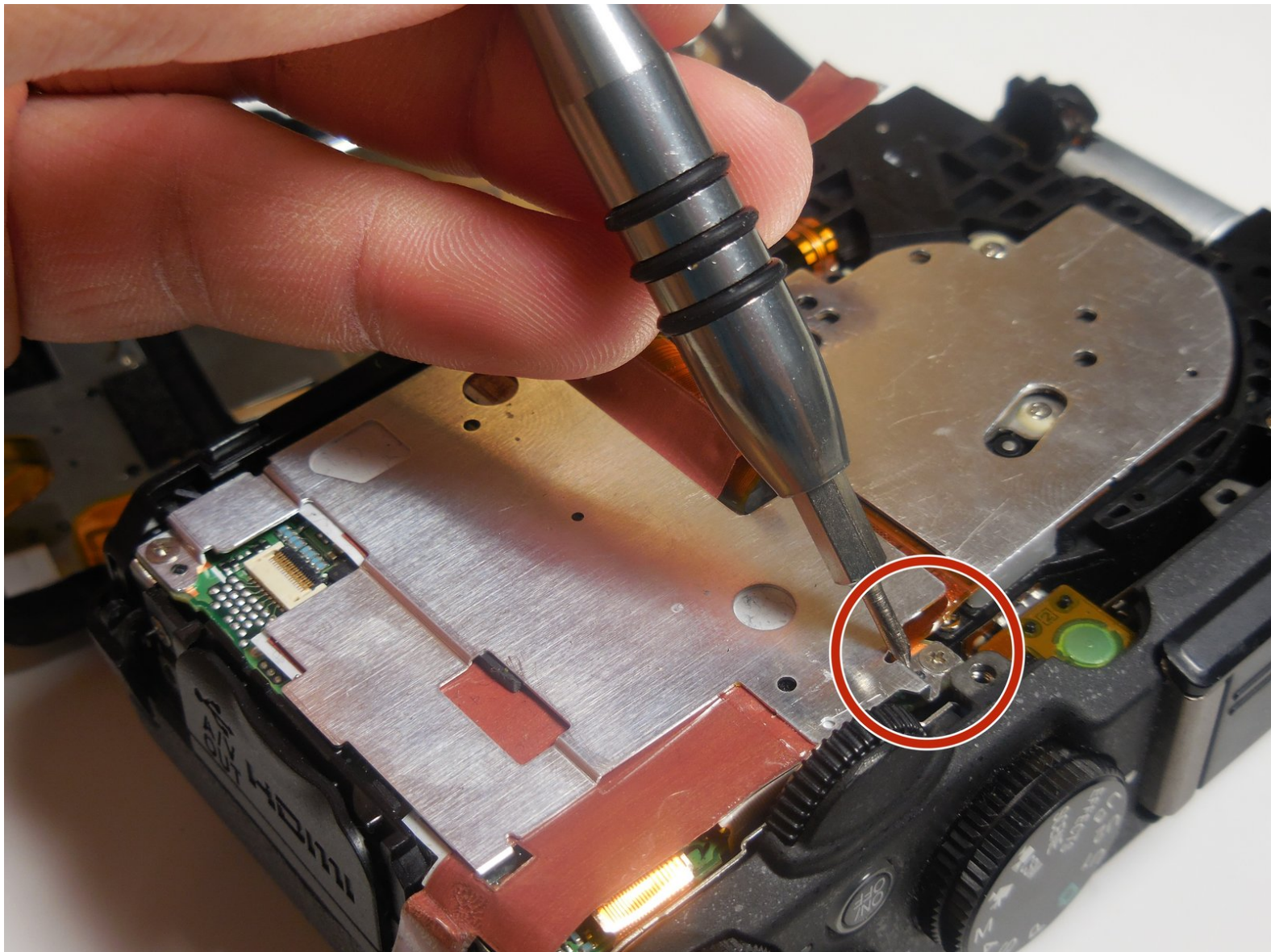




Nikon COOLPIX P7700 Focusing Screen Replacement

This guide will show how to replace a Nikon COOLPIX P7700 Focussing screen.

Written By: Dustin Wahl



INTRODUCTION

This guide showcases how to replace the focusing screen on the Nikon COOLPIX p7700 camera. Follow these 18 steps to ensure proper replacement of the camera's focusing lens.

TOOLS:

- [Phillips #00 Screwdriver](#) (1)
-

Step 1 — Back Casing



- Turn camera to the left side and remove the two 4.3 mm black side screws using the Phillips #00 screwdriver.
- Remove the side panel.

Step 2



- Open the touch screen, and remove the three 4.3 mm black screws inside using the Phillips #00 screwdriver.

Step 3



- Remove the 4.3 mm black screw on top of the camera, right above where the screen folds out. Use the Phillips #00 screwdriver.

Step 4



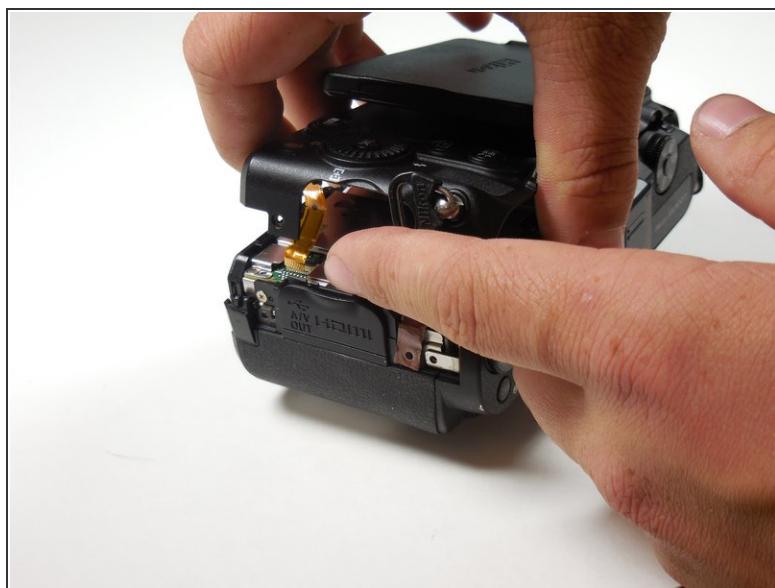
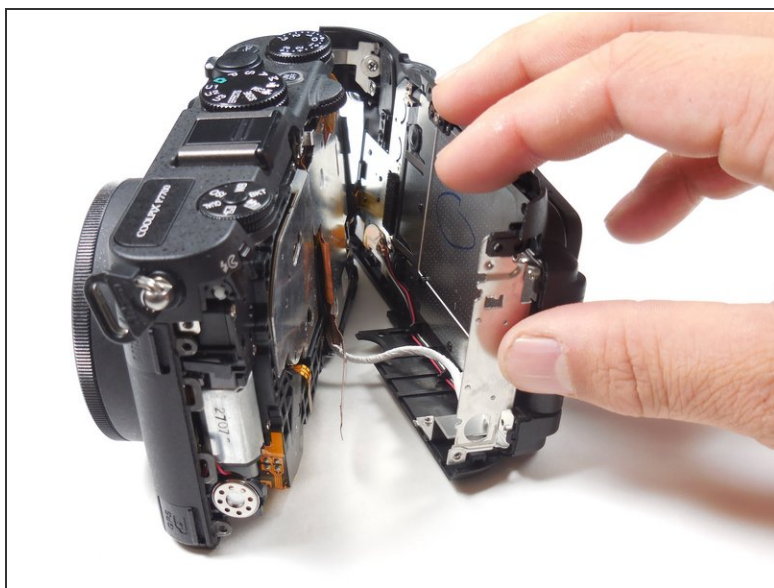
- Remove the two 4.3 mm black screws on the right side of the camera using the Phillips #00 screwdriver.

Step 5



- Remove the 4.3 mm black screws on the bottom of the camera using the Phillips #00 screwdriver.

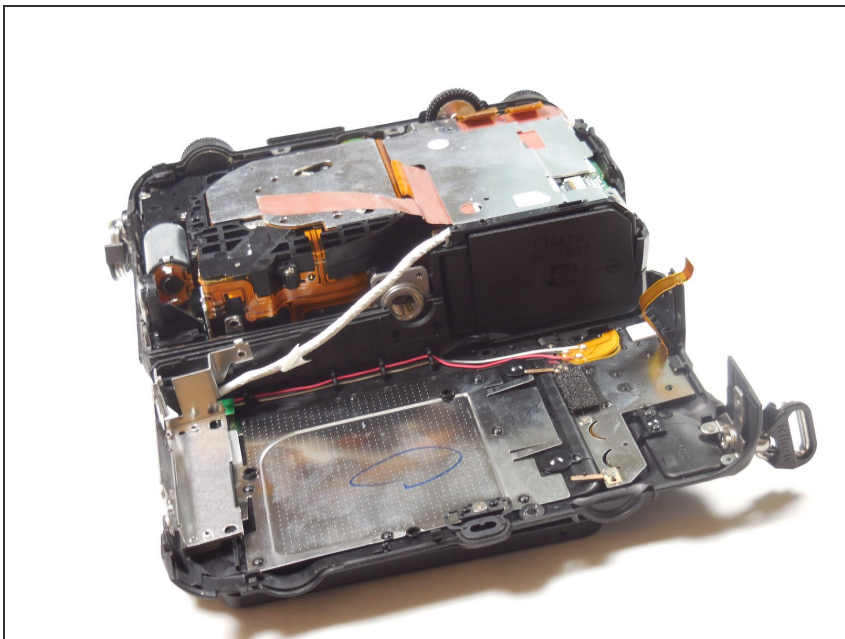
Step 6



- Begin separating the camera into two parts.

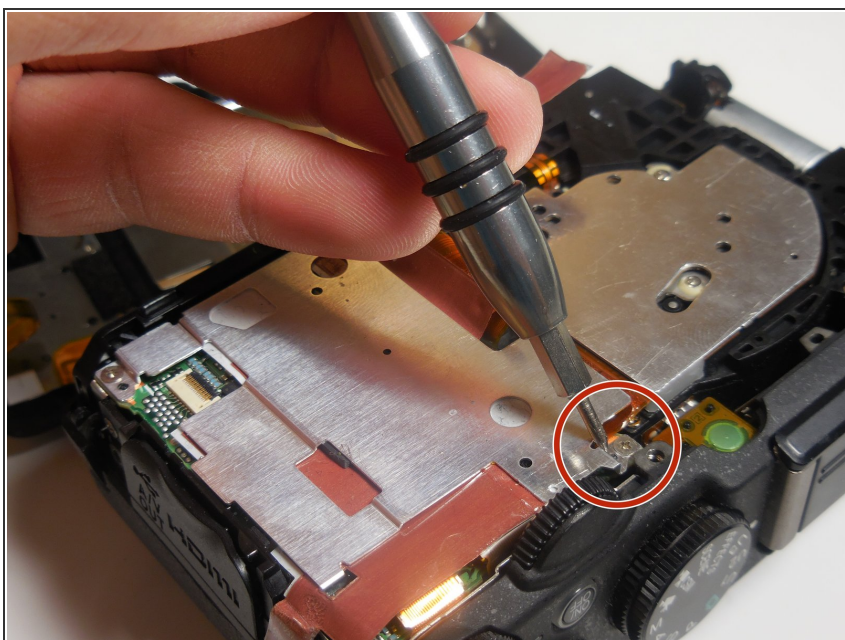
i It is okay to remove the orange ribbon. This will be easily put back into place when re-assembling.

Step 7



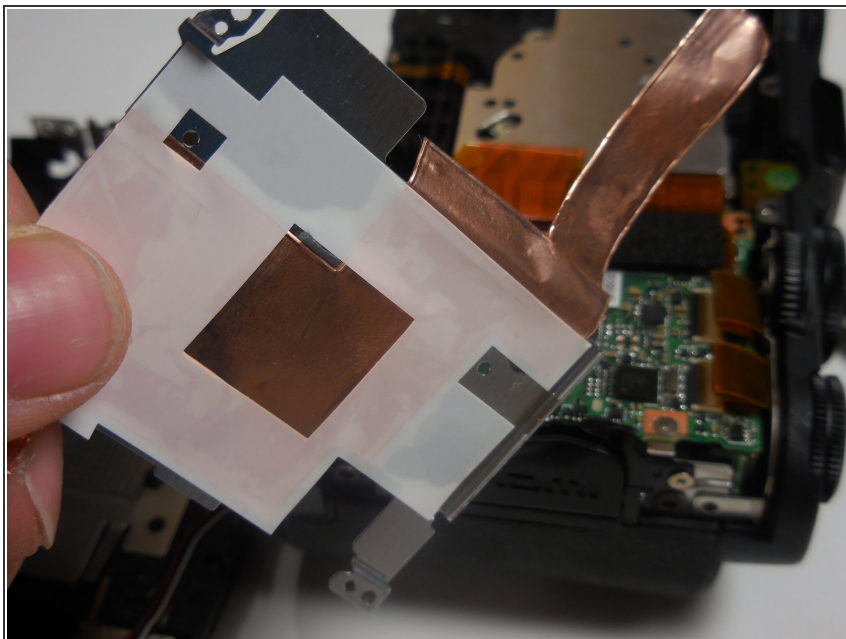
- Remove the back casing.

Step 8 — Focusing Screen



- Once the back casing is off, locate the 4.3 mm silver screw near the top of the camera and remove it using the Phillips #00 screwdriver.

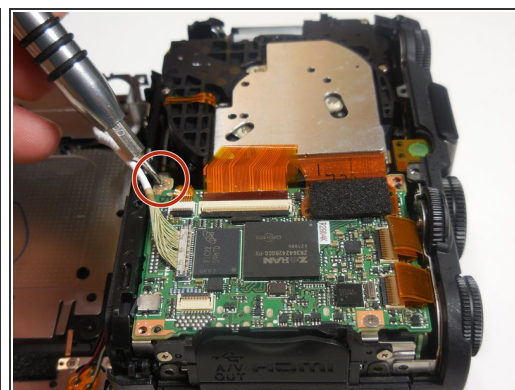
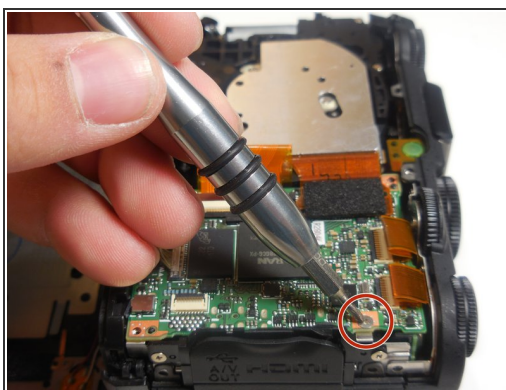
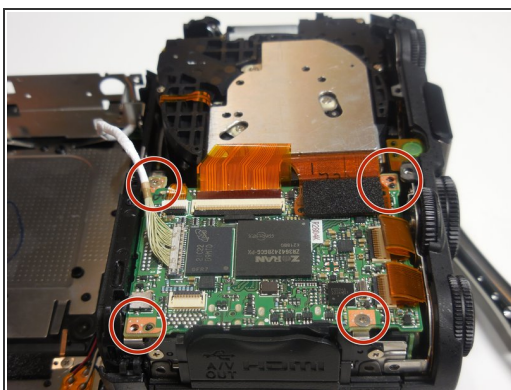
Step 9



- Remove the metal sheet from the camera.

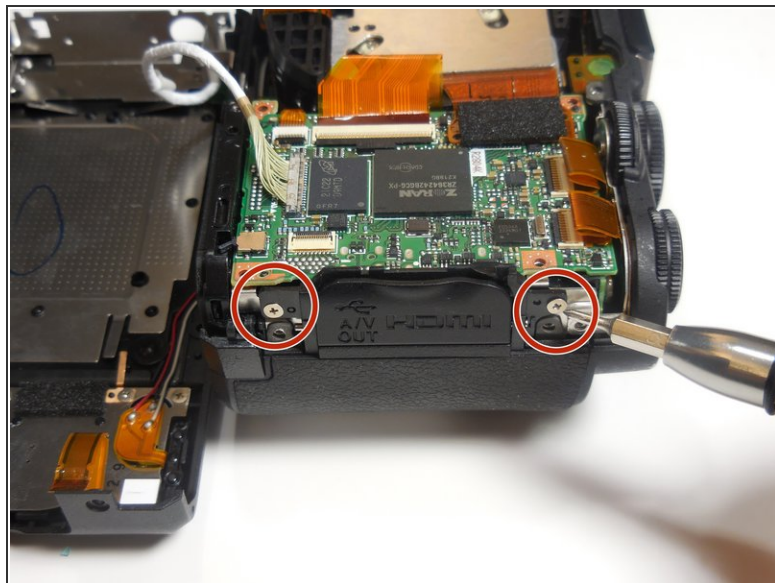
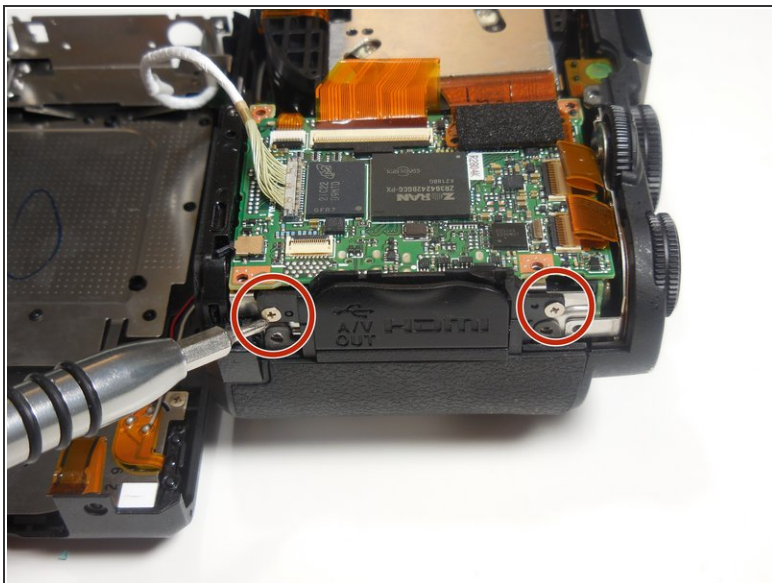
i *It is okay to remove the orange ribbon from the camera.*

Step 10



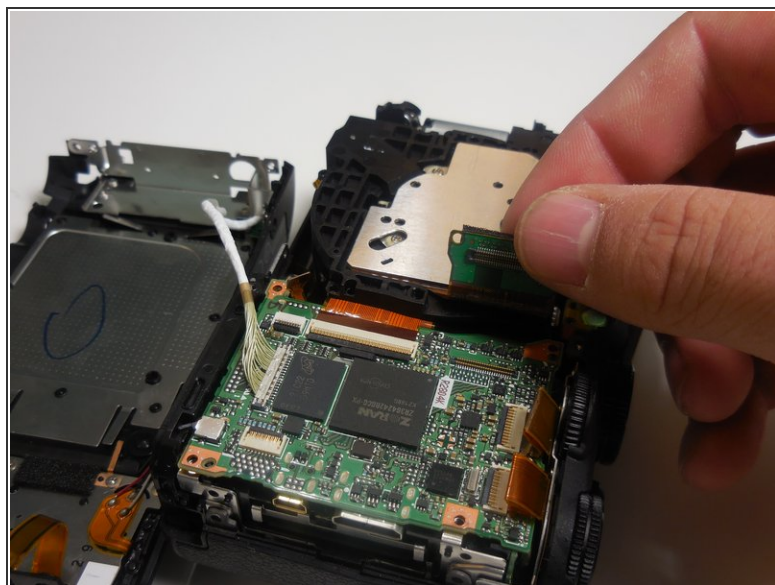
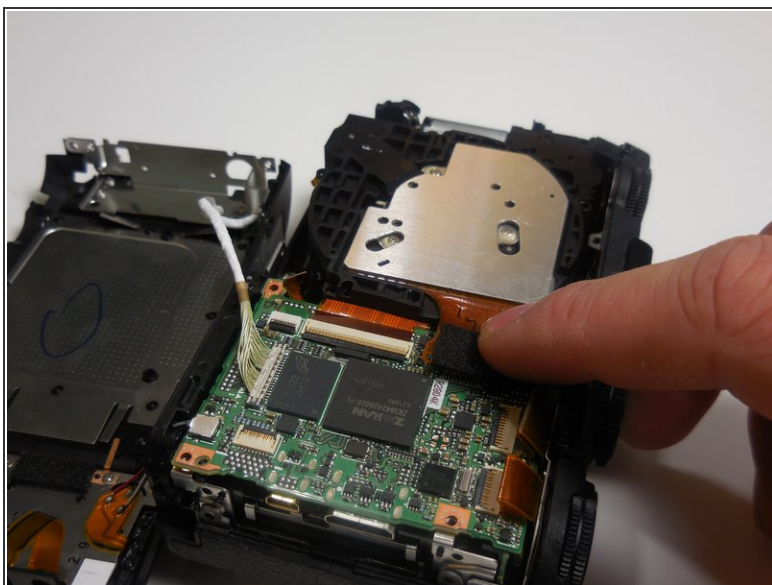
- Remove the four 4.3 mm silver screws located on the ends of the chip using the Phillips #00 screwdriver.

Step 11



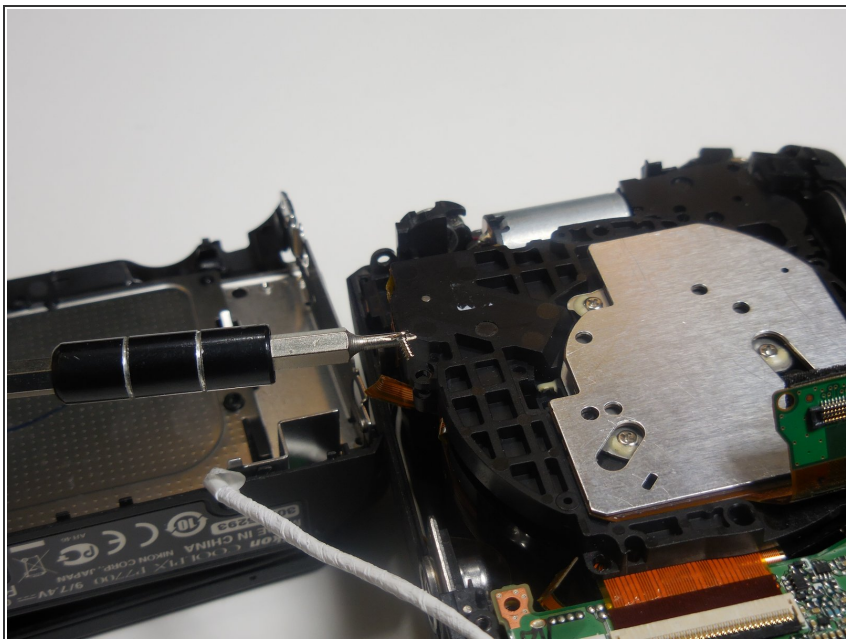
- Remove the two 4.3 mm silver screws on the far right side of the camera using the Phillips #00 screwdriver.

Step 12



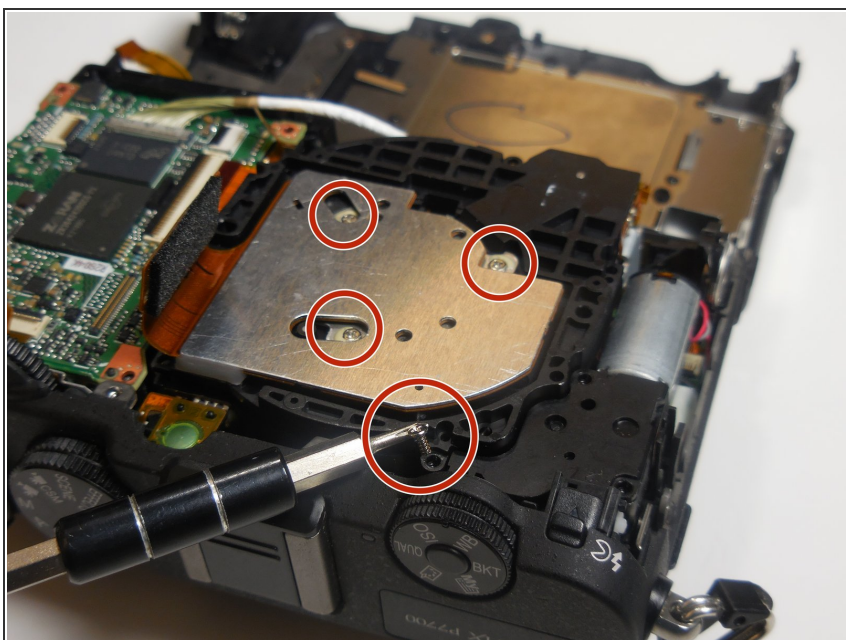
- Lift and detach connector from board as shown.

Step 13



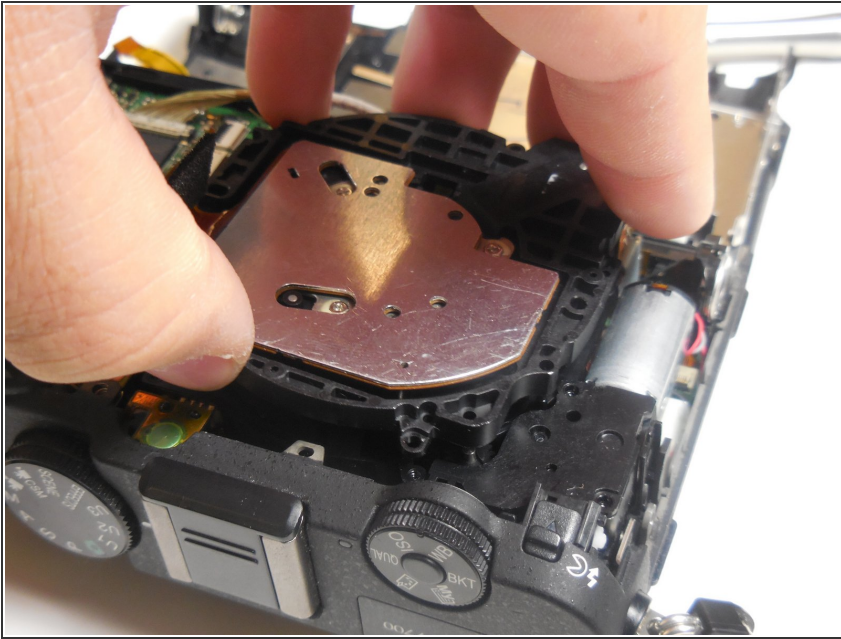
- Remove the board from the camera to locate lens opening

Step 14



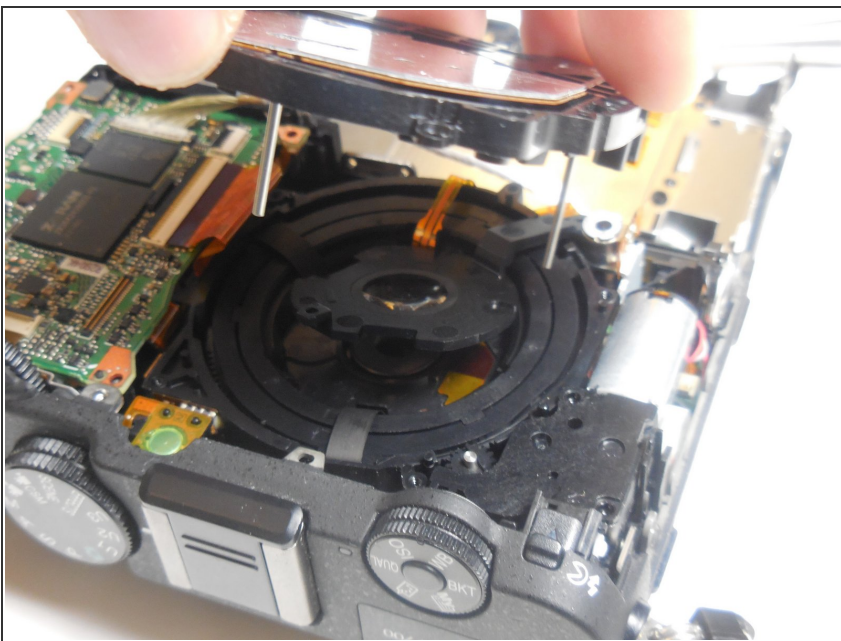
- Remove the 4.3 mm screws from the metal sheet using the Phillips #00 screwdriver.

Step 15



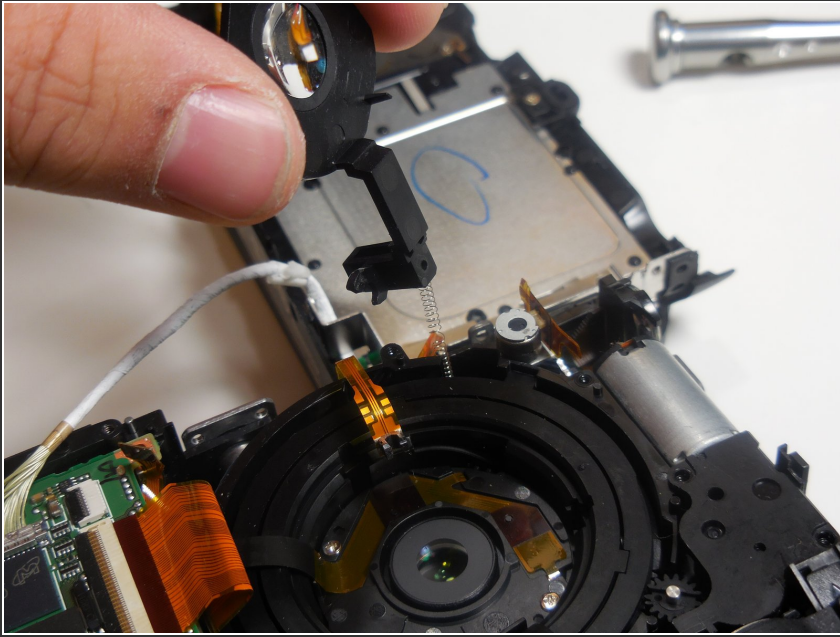
- Lift the metal sheet up and out of the camera.

Step 16



- Locate the reflective lens.

Step 17



- Remove the lens from the camera.

To reassemble your device, follow these instructions in reverse order.